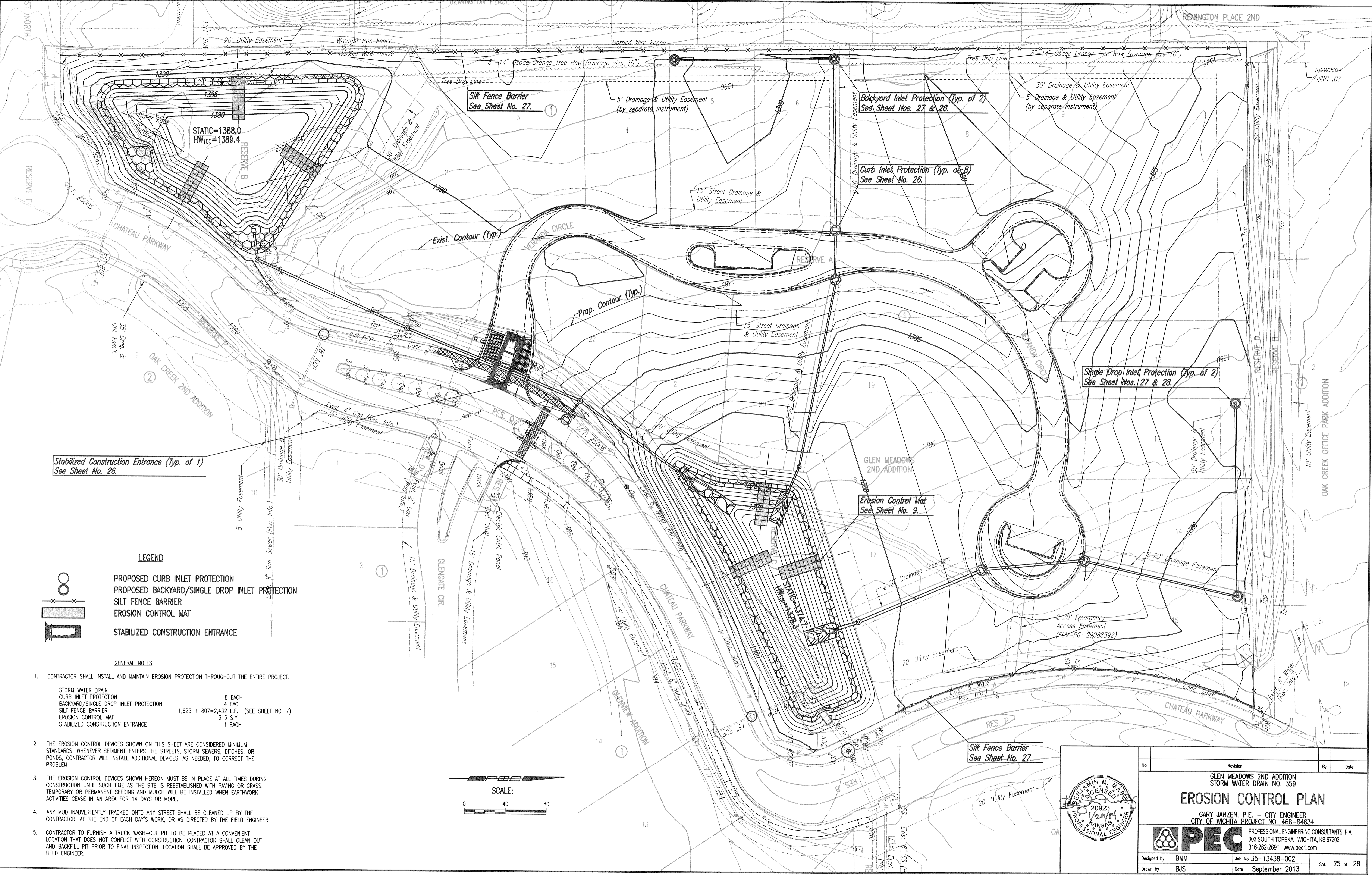


Sheet 01 of 28 - 2013, 1:50 Scale, P.W. by BJS
 Plan Scale: 1" = 20'-0" (2013, 4:00) P.W. by BJS
 O.V. 2013.13.14.138.002.1.4.38-002-25C-EROSION CONTROL PLAN



Stabilized Construction Entrance (Typ. of 1)
See Sheet No. 26.

Silt Fence Barrier
See Sheet No. 27.

Backyard Inlet Protection (Typ. of 2)
See Sheet Nos. 27 & 28.

Curb Inlet Protection (Typ. of 8)
See Sheet No. 26.

Single Drop Inlet Protection (Typ. of 2)
See Sheet Nos. 27 & 28.

Erosion Control Mat
See Sheet No. 9.

Silt Fence Barrier
See Sheet No. 27.

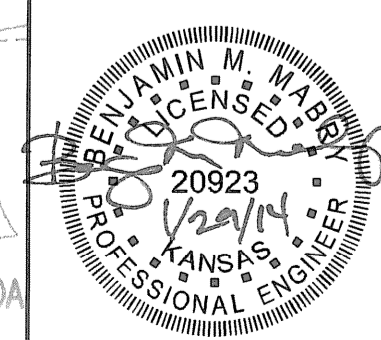
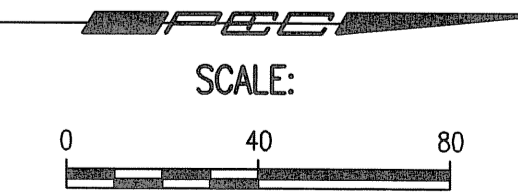
LEGEND

- PROPOSED CURB INLET PROTECTION
- PROPOSED BACKYARD/SINGLE DROP INLET PROTECTION
- SILT FENCE BARRIER
- EROSION CONTROL MAT
- STABILIZED CONSTRUCTION ENTRANCE

GENERAL NOTES

1. CONTRACTOR SHALL INSTALL AND MAINTAIN EROSION PROTECTION THROUGHOUT THE ENTIRE PROJECT.

STORM WATER DRAIN	8 EACH
CURB INLET PROTECTION	4 EACH
BACKYARD/SINGLE DROP INLET PROTECTION	1,625 + 807 = 2,432 L.F. (SEE SHEET NO. 7)
SILT FENCE BARRIER	313 S.Y.
EROSION CONTROL MAT	1 EACH
STABILIZED CONSTRUCTION ENTRANCE	
2. THE EROSION CONTROL DEVICES SHOWN ON THIS SHEET ARE CONSIDERED MINIMUM STANDARDS. WHENEVER SEDIMENT ENTERS THE STREETS, STORM SEWERS, DITCHES, OR PONDS, CONTRACTOR WILL INSTALL ADDITIONAL DEVICES, AS NEEDED, TO CORRECT THE PROBLEM.
3. THE EROSION CONTROL DEVICES SHOWN HEREON MUST BE IN PLACE AT ALL TIMES DURING CONSTRUCTION UNTIL SUCH TIME AS THE SITE IS REESTABLISHED WITH PAVING OR GRASS. TEMPORARY OR PERMANENT SEEDING AND MULCH WILL BE INSTALLED WHEN EARTHWORK ACTIVITIES CEASE IN AN AREA FOR 14 DAYS OR MORE.
4. ANY MUD INADVERTENTLY TRACKED ONTO ANY STREET SHALL BE CLEANED UP BY THE CONTRACTOR, AT THE END OF EACH DAY'S WORK, OR AS DIRECTED BY THE FIELD ENGINEER.
5. CONTRACTOR TO FURNISH A TRUCK WASH-OUT PIT TO BE PLACED AT A CONVENIENT LOCATION THAT DOES NOT CONFLICT WITH CONSTRUCTION. CONTRACTOR SHALL CLEAN OUT AND BACKFILL PIT PRIOR TO FINAL INSPECTION. LOCATION SHALL BE APPROVED BY THE FIELD ENGINEER.



No.	Revision	By	Date

GLEN MEADOWS 2ND ADDITION
STORM WATER DRAIN NO. 359

EROSION CONTROL PLAN

GARY JANZEN, P.E. - CITY ENGINEER
CITY OF WICHITA PROJECT NO. 468-84634

PEC PROFESSIONAL ENGINEERING CONSULTANTS, P.A.
303 SOUTH TOPEKA WICHITA, KS 67202
316-262-2691 www.pec.com

Designed by BMM	Job No. 35-13438-002	Date September 2013	Sht. 25 of 28
Drawn by BJS			