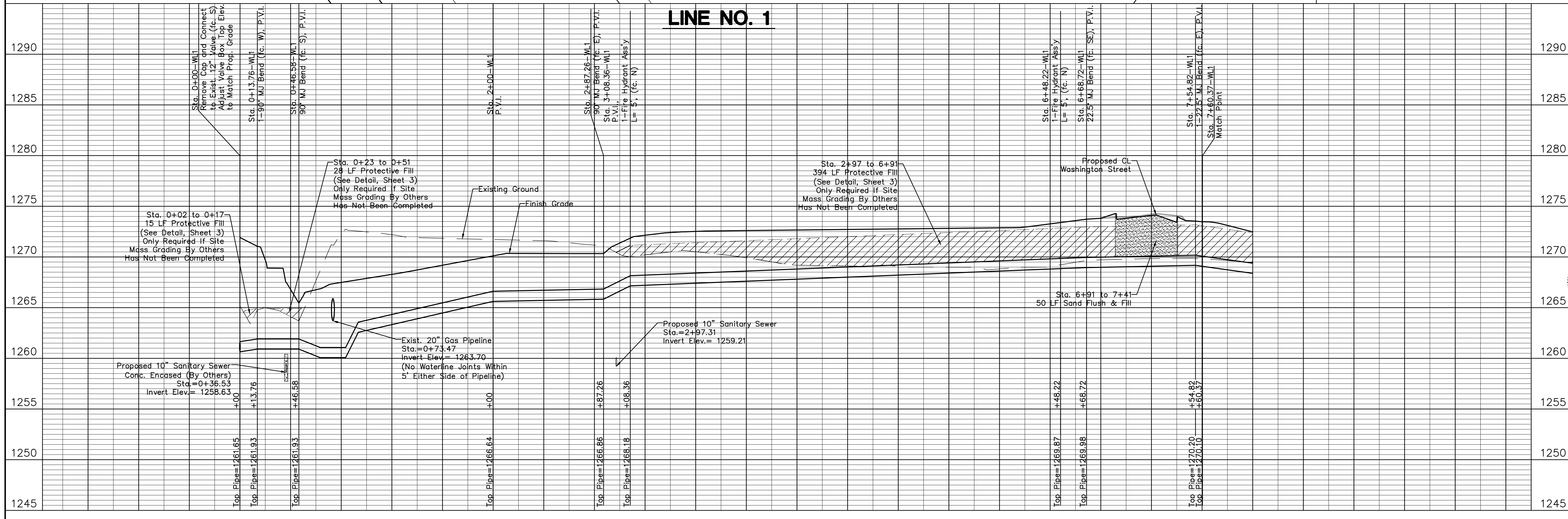


NOTES:
 1. Contractor to Field Verify location and Depth of All Utilities Prior to Construction and Report Findings to Project Engineer.



POE & ASSOCIATES, INC.
 CONSULTING ENGINEERS
 5940 E. Central, Suite 200 • Wichita, KS 67208-4242
 Phone: 316/685-1114 • FAX: 316/685-4444

SOUTH FORK ADDITION WATER DISTRIBUTION SYSTEM IMPROVEMENTS WATERLINE NO. 1

CITY OF WICHITA, KANSAS
 GARY JANZEN, P.E. - CITY ENGINEER
 PROJECT NO. 448-90558 OCA NO. (735475)

FINAL

Engineer: S. SERVIS
 Designer: M. TUCKER
 P.O. Job No.: 1858
 Date: JANUARY 2014

Sheet 4 of 11