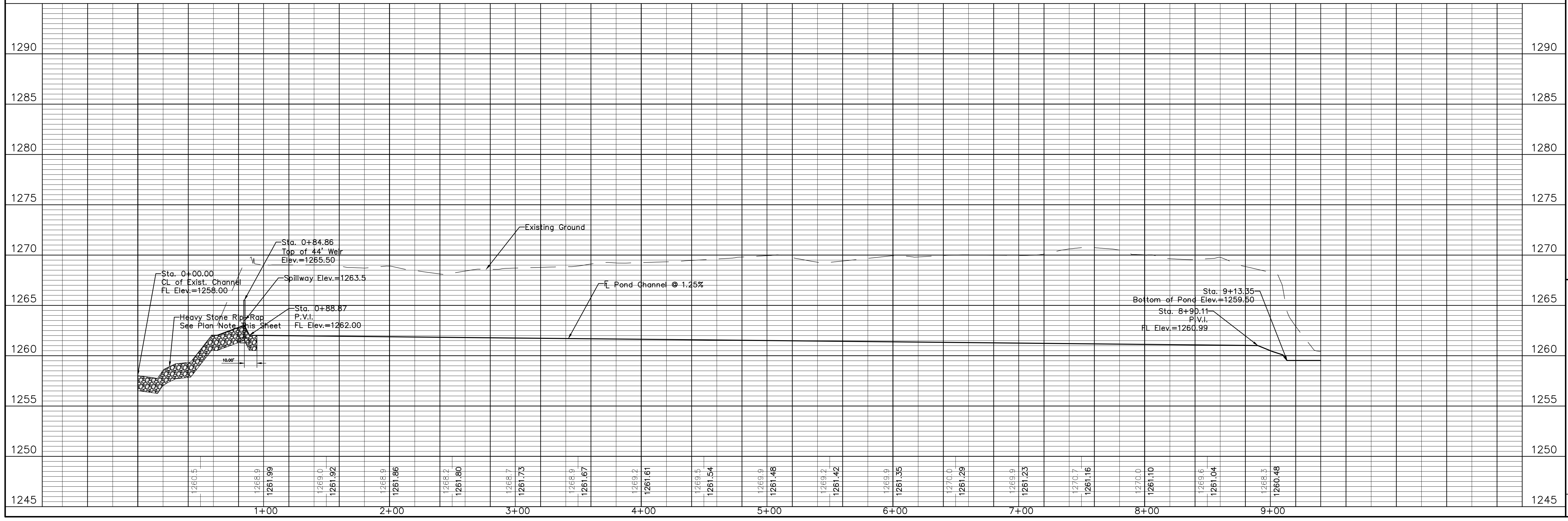
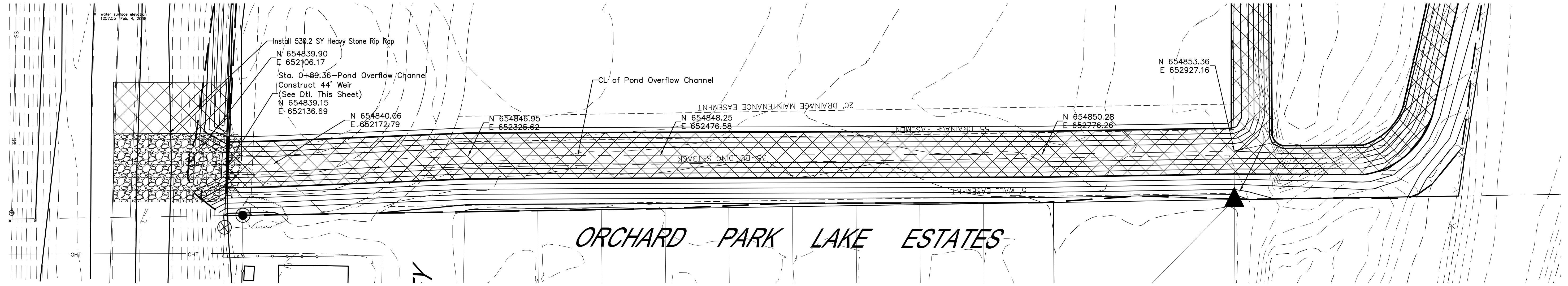
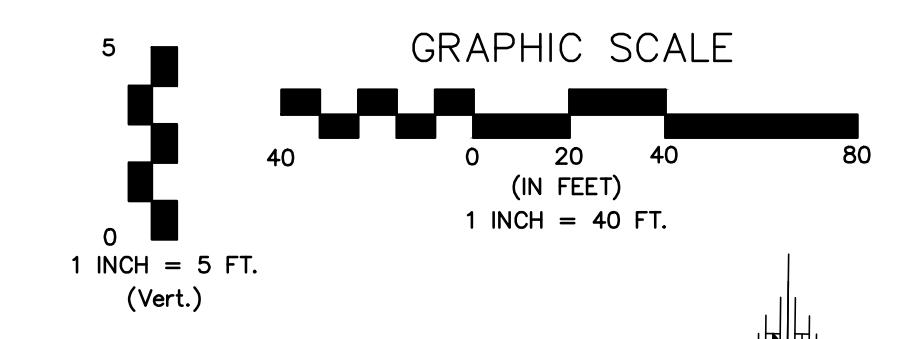


NOTE
Concrete weir shall be a minimum of 1'-0" in thickness and shall be reinforced with #4 Bars E.W. on 1'-0" centers with min. 2 1/2" wall clearance.



SOUTHFORK COMMERCIAL ADDITION
PAVING & DRAINAGE IMPROVEMENTS
POND OVERFLOW CHANNEL
CITY OF WICHITA, KANSAS
GARY JANZEN, P.E. - CITY ENGINEER
PROJECT NO. 468-84826 OCA NO. (751507)
PROJECT NO. 472-85050 OCA NO. (766279)

By: Approved

Date

No.

POE & ASSOCIATES, INC.
CONSULTING ENGINEERS
5940 E. Central, Suite 200 • Wichita, KS 67208-4242
Phone 316.685-1111 • FAX 316.685-4444

Engineer: T. AUSTIN
Designer: M. TUCKER
Poe Job No.: 1558
Date: JANUARY 2014

Sheet
12 of 43