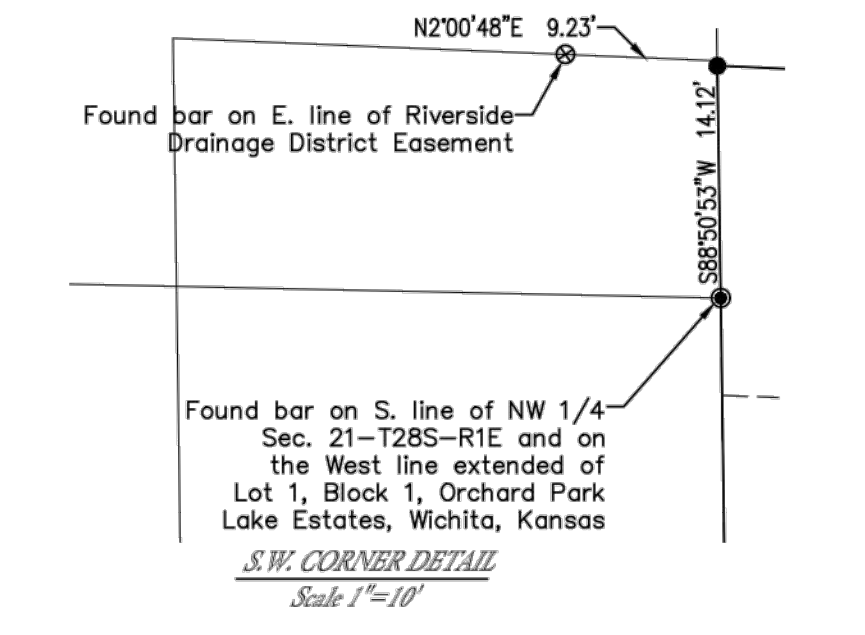


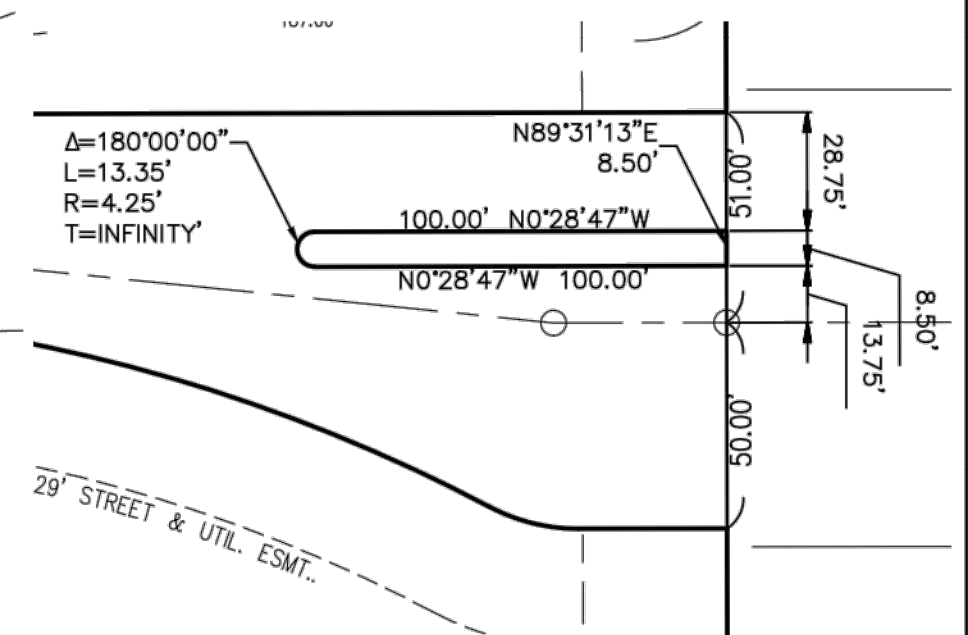
- LEGEND**
- 1 1/2" Pipe Found
  - ⊗ Mooring Bar & Cap Found
  - ▲ Section Corner Found
  - 5/8" Bar w/ Pvc Cap Set

**BENCHMARK**  
 Bench Mark #72  
 City of Wichita bench mark disk. 20.7' E. of E. Broadway curb and 41.5' S. of centerline Custy. Elevation 1274.71 NGVD88 (Elevation 86.82 city datum)

Bench Mark #60  
 " " cut on S.E. corner of bridge abutment over Riverside Drainage District on 47th St. S. Elevation 1273.80 NAVD88



- NOTES**
- This plat is subject to the Provisions of Southfork Commercial Addition Community Unit Plan, DP-249 on file with the Metropolitan Area Planning Dept.
  - This plat is subject to a drainage plan on file with City Public Works.



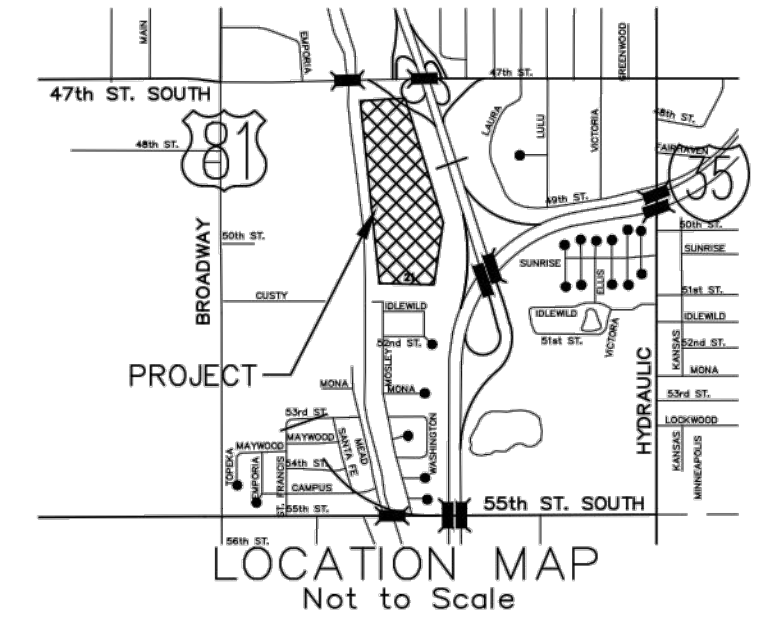
**Centerline Line & Curve Table**

Line #/Curve #	Length	Direction/Delta	Radius
C20	314.30	42°22'17"	425.00'
C21	207.80	23°48'44"	500.00'
C22	182.56	7°38'06"	1370.00'
L10	155.50'	N0°28'47"W	
L11	42.02'	N0°28'47"W	
L12	164.71'	N5°29'05"E	
L13	71.00'	N84°33'38"E	

Minimum Building Pad Elevation for Lowest Opening into Structures

Lots 1-8, Block 1	1272.0 NAVD88 *
-------------------	-----------------

\* As approved by the City Stormwater Engineer



# ONE STEP FINAL PLAT SOUTHFORK COMMERCIAL ADDITION

TO  
 WICHITA, SEDGWICK COUNTY, KANSAS

**POE & ASSOCIATES, INC.**  
 CONSULTING ENGINEERS  
 5940 E. Central, Suite 200 ■ Wichita, KS 67208-4242  
 Phone 316/685-4114 ■ FAX 316/685-4444

Date of Preparation: 7/17/2012