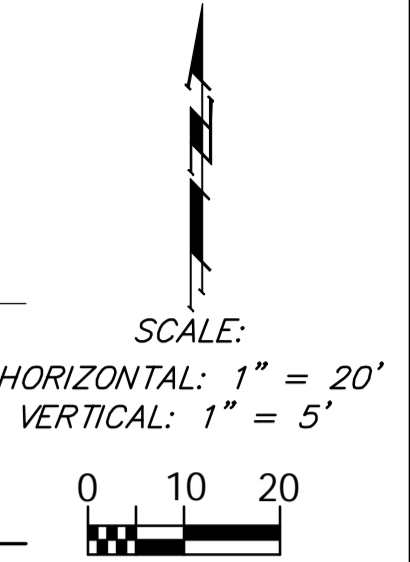
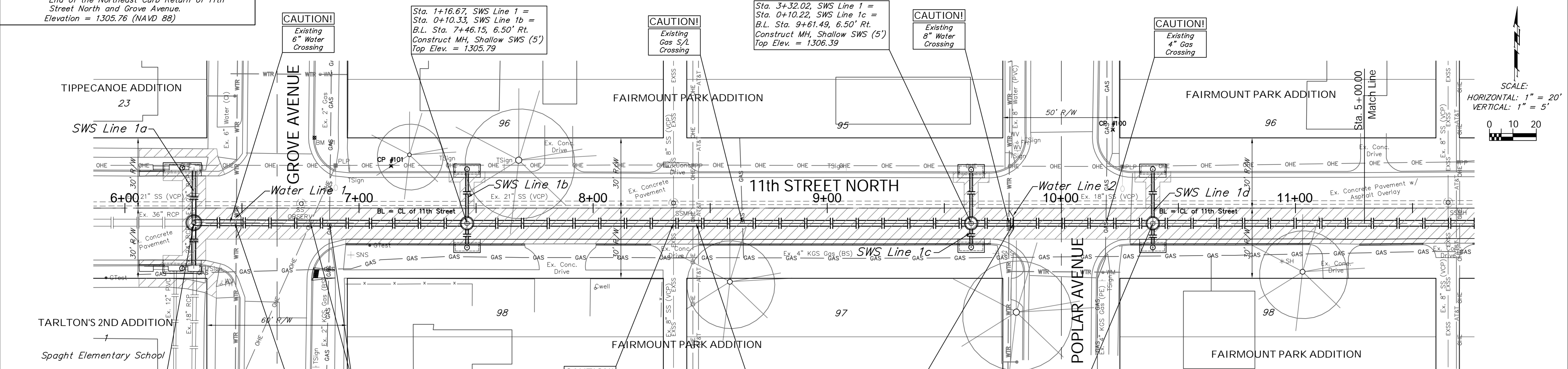


BENCHMARK:
 BM #1 - Chiseled "□" on the Top of Curb at the North End of the Northeast Curb Return of 11th Street North and Grove Avenue.
 Elevation = 1305.76 (NAVD 88)



Sta. 0+00.00, Begin SWS Line 1 = Sta. 0+19.55, SWS Line 1a = B.L. Sta. 6+29.48, 6.22' Rt. Remove Ex. SWS Manhole. Construct MH, Shallow SWS (6') Connect Ex. 36" RCP (W), Grout, and Seal Tight. Top Elev. = 1305.09

B.L. Sta. 6+00.00
 N-5000.00, E-4399.91

CAUTION!
 Existing 6" Water Crossing

CAUTION!
 Existing 0/H Elec 2" Gas Crossings

CAUTION!
 Existing 8" SS Crossing

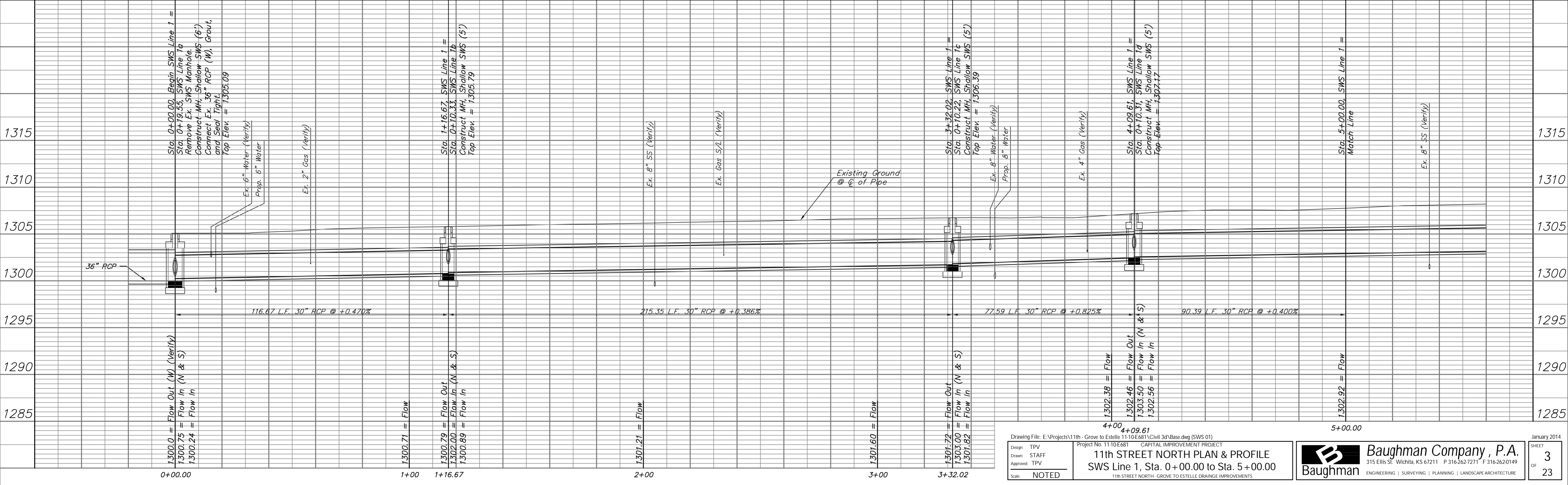
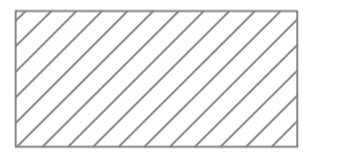
CAUTION!
 Existing 0/H Elec 0/H AT&T Crossings

CAUTION!
 Proposed 8" Water Crossing

Sta. 4+09.61, SWS Line 1 = Sta. 0+10.31, SWS Line 1d = B.L. Sta. 10+39.08, 6.50' Rt. Construct MH, Shallow SWS (5') Top Elev. = 1307.17

3/4" Iron at the Intersection of 11th Street North and Poplar Avenue.
 B.L. Sta. 10+00.00
 N-5000.00, E-4399.91

Note:
 Areas of Full Pavement Removal and Replacement are Indicated By:



Drawing File: E:\Projects\11th - Grove to Estelle\11th-10-0681\Civil 3d\Base.dwg (SWS 01)
 Design: TPV
 Drawn: STAFF
 Approved: TPV
 Scale: NOTED

Project No. 11-10-0681 CAPITAL IMPROVEMENT PROJECT
11th STREET NORTH PLAN & PROFILE
 SWS Line 1, Sta. 0+00.00 to Sta. 5+00.00
 11th STREET NORTH - GROVE TO ESTELLE DRAINAGE IMPROVEMENTS

Baughman Company, P.A.
 315 Ellis St. Wichita, KS 67211 P 316-262-7271 F 316-262-0149
 ENGINEERING | SURVEYING | PLANNING | LANDSCAPE ARCHITECTURE

January 2014
 SHEET
 OF
 3
 23