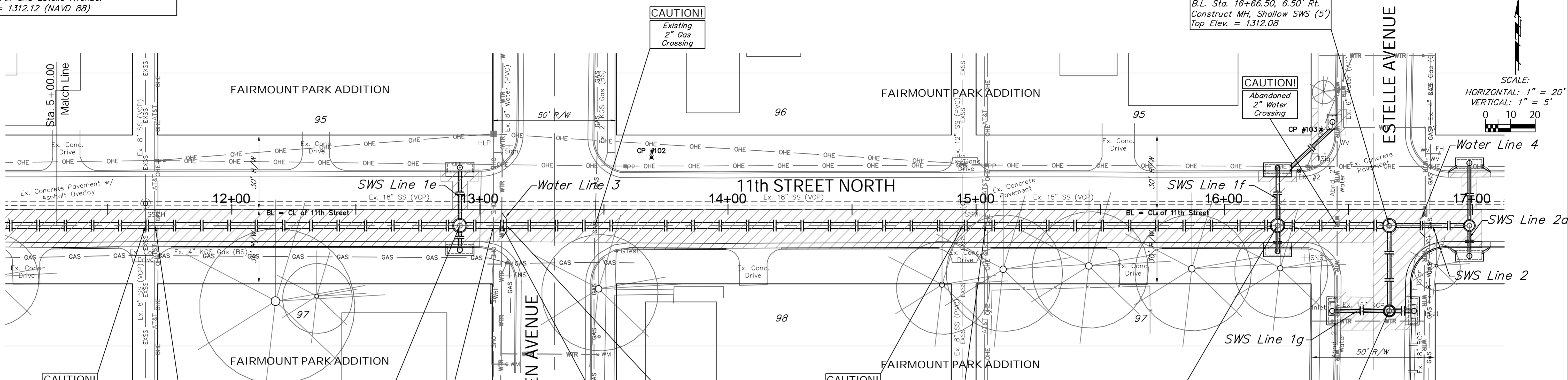


BENCHMARK:
 BM #2 - Chiseled "□" on the Top of Curb at the West End of the Northwest Curb Return of 11th Street North and Estelle Avenue.
 Elevation = 1312.12 (NAVD 88)

Sta. 10+37.02, SWS Line 1 =
 Sta. 0+00.00, SWS Line 2 =
 B.L. Sta. 16+66.50, 6.50' Rt.
 Construct MH, Shallow SWS (5')
 Top Elev. = 1312.08

SCALE:
 HORIZONTAL: 1" = 20'
 VERTICAL: 1" = 5'



Note:
 Areas of Full Pavement Removal and Replacement are Indicated By:

CAUTION!
 Existing 8" SS Crossing

CAUTION!
 Existing O/H Elec O/H AT&T Crossings

Sta. 6+62.43, SWS Line 1 =
 Sta. 0+09.81, SWS Line 1e =
 B.L. Sta. 12+91.91, 6.50' Rt.
 Construct MH, Shallow SWS (5')
 Top Elev. = 1308.54

CAUTION!
 Existing O/H Elec Crossing

CAUTION!
 Existing 8" Water Crossing

CAUTION!
 Proposed 8" Water Crossing

CAUTION!
 Existing 8" SS Crossing

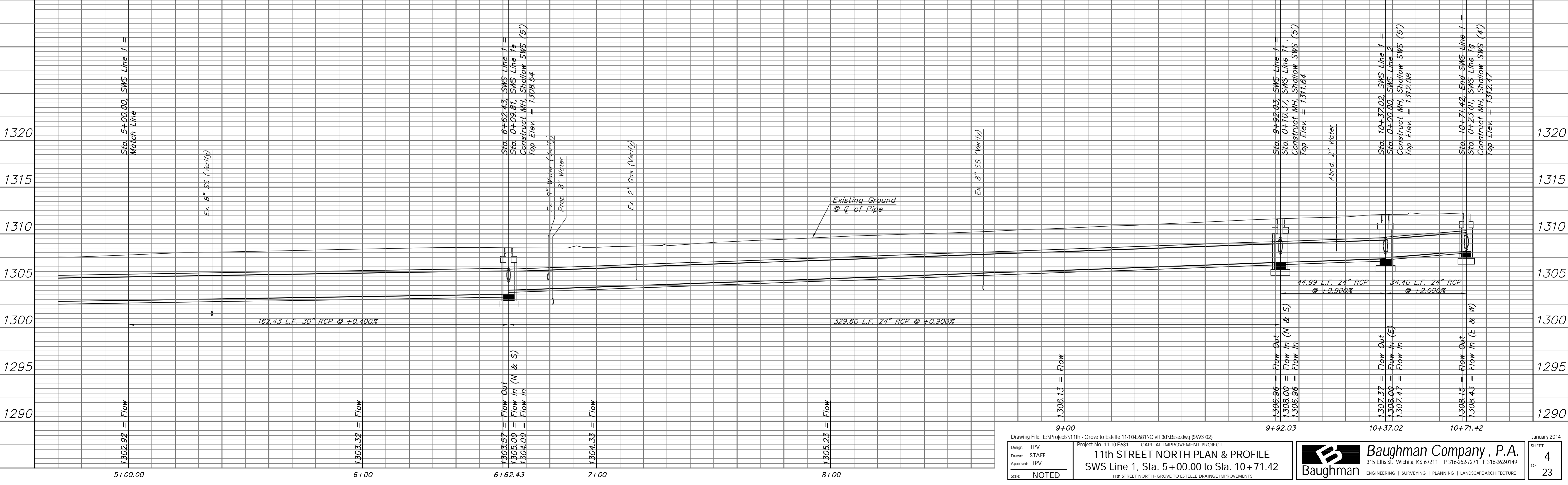
CAUTION!
 Existing O/H Elec O/H AT&T Crossings

Sta. 9+92.03, SWS Line 1 =
 Sta. 0+10.37, SWS Line 1f =
 B.L. Sta. 16+21.51, 6.50' Rt.
 Construct MH, Shallow SWS (5')
 Top Elev. = 1311.64

Sta. 10+71.42, End SWS Line 1 =
 Sta. 0+23.01, SWS Line 1g =
 B.L. Sta. 16+66.50, 40.90' Rt.
 Construct MH, Shallow SWS (4')
 Top Elev. = 1312.47

3" Iron in Thimble at the Intersection of 11th Street North and Green Avenue.
 B.L. Sta. 13+30.29, 0.11' Lt.

3" Iron at the Intersection of 11th Street North and Estelle Avenue.
 B.L. Sta. 16+60.00+
 N-5000.00, E-5000.00



Design: TPV
 Drawn: STAFF
 Approved: TPV
 Scale: NOTED

11th STREET NORTH PLAN & PROFILE
 SWS Line 1, Sta. 5+00.00 to Sta. 10+71.42

Baughman Company, P.A.
 315 Ellis St., Wichita, KS 67211 P 316.262.7271 F 316.262.0149
 ENGINEERING | SURVEYING | PLANNING | LANDSCAPE ARCHITECTURE

January 2014
 SHEET 4 OF 23