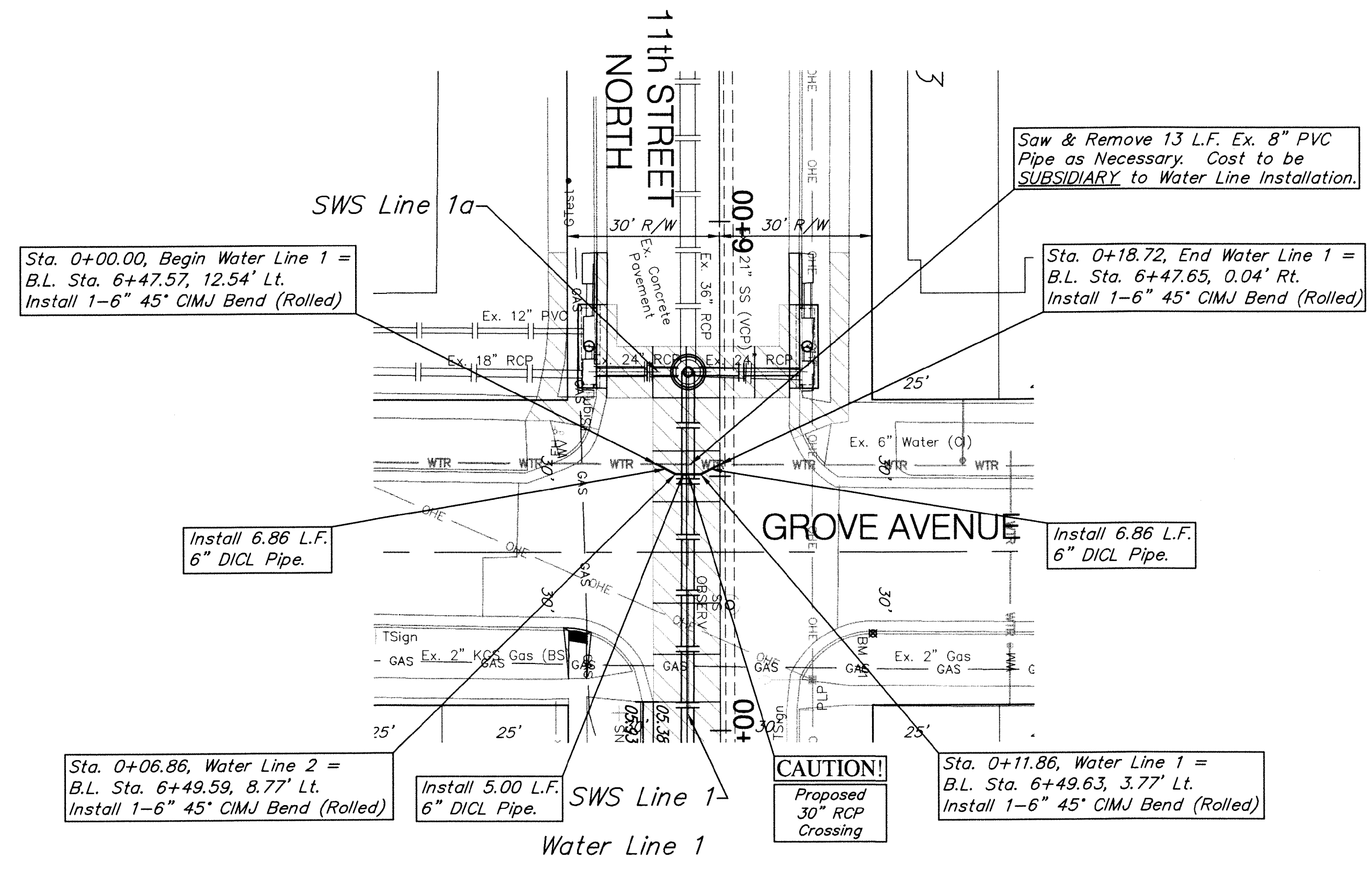


BENCHMARK:
 BM #2 - Chiseled "□" on the Top of Curb at the West End of the Northwest Curb Return of 11th Street North and Estelle Avenue.
 Elevation = 1312.12 (NAVD 88)

SCALE:
 HORIZONTAL: 1" = 20'
 VERTICAL: 1" = 5'



BENCHMARK:
 BM #1 - Chiseled "□" on the Top of Curb at the North End of the Northeast Curb Return of 11th Street North and Grove Avenue.
 Elevation = 1305.76 (NAVD 88)

SCALE:
 HORIZONTAL: 1" = 20'
 VERTICAL: 1" = 5'

