

Remove & Replace
A.C. Pvmt.
Paid as Sq. Yd. A.C.
Pvmt. Rem & Repl.

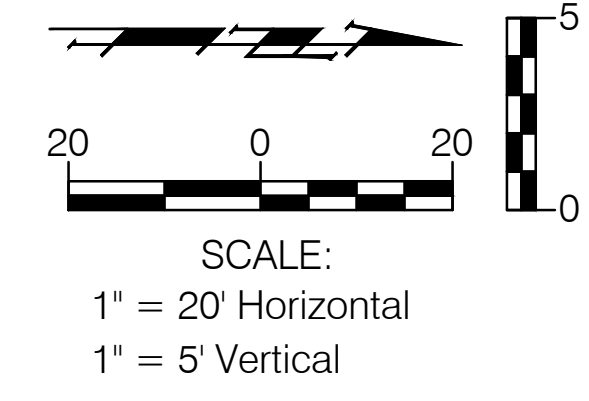
NOTE:
ALL 16" AND 20" FITTINGS ON THE
PROJECT WILL BE RJ, AND THAT
THRUST BLOCKING WILL NOT BE
ALLOWED.

CAUTION
Prop. 36"
SWS
CROSSES

W.L. Sta. 0+05.21=
B.L. Sta. 53+91.00, 29.6' Rt.
Install 1-16" C.I.M.J. 45' Bend
(Up-Rolled)

Install 14.16 L.F. 16"
Waterline Pipe

W.L. Sta. 0+19.37 =
B.L. Sta. 53+91.00, 15.63' Rt.
Install 1-16" C.I.M.J. 45' Bend
(Up-Rolled)



Install 5.21 L.F. 16"
D.I.C.L. Pipe.

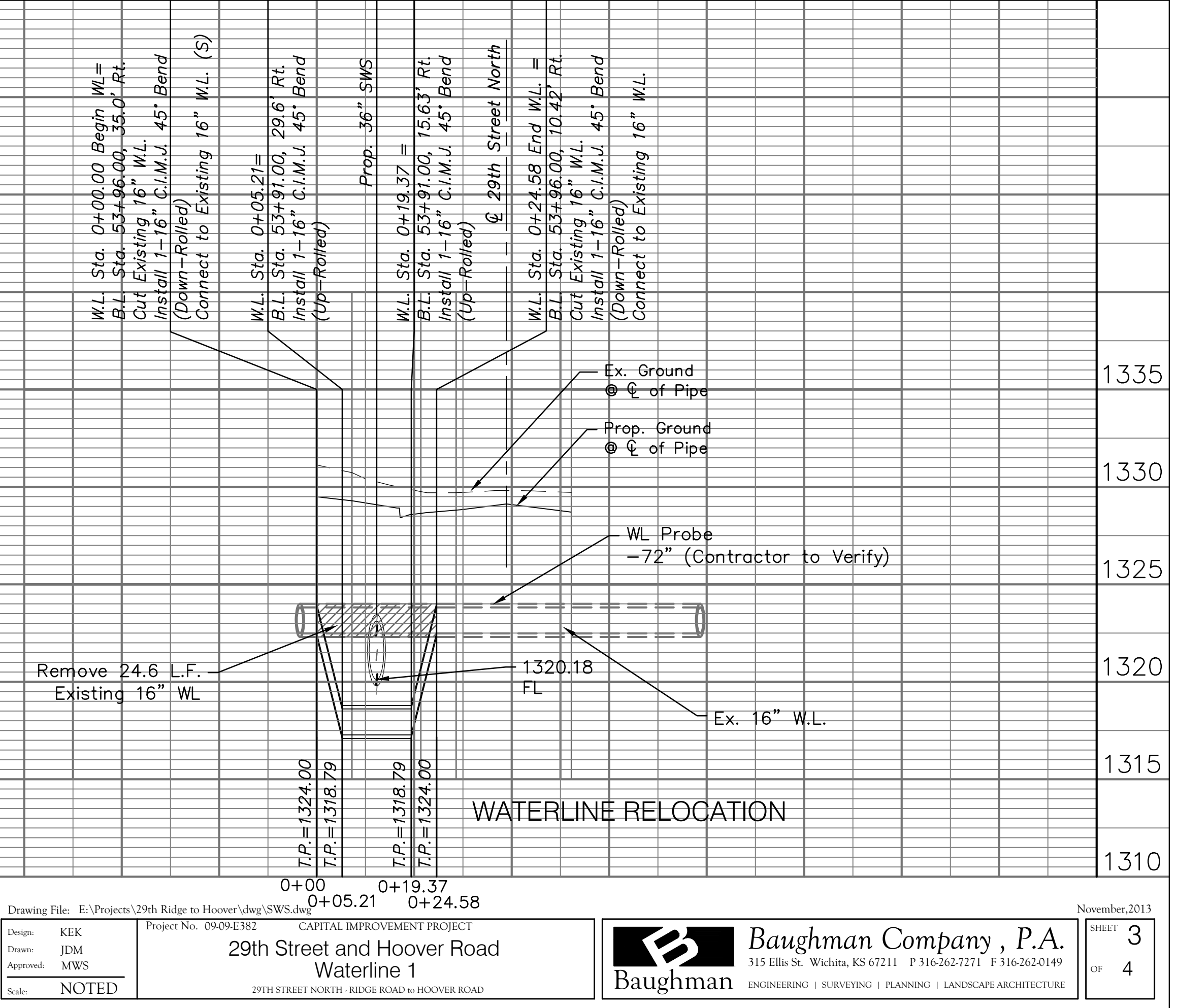
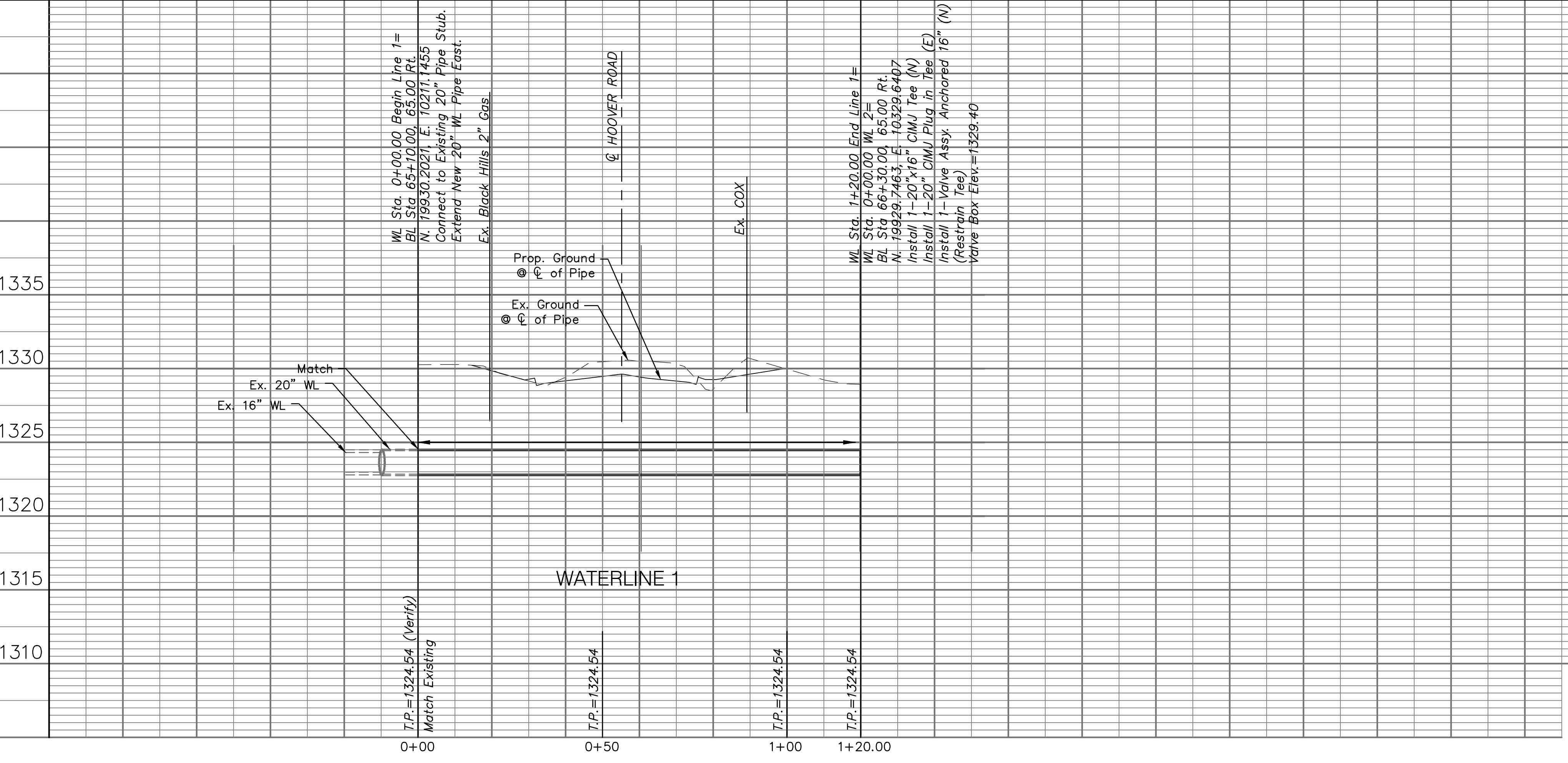
W.L. Sta. 0+00.00 Begin WL=
B.L. Sta. 53+96.00, 35.0' Rt.
Cut Existing 16" W.L.
Install 1-16" C.I.M.J. 45' Bend
(Down-Rolled)
Connect to Existing 16" W.L. (S)

Install 5.22 L.F. 16"
D.I.C.L. Pipe.

W.L. Sta. 0+24.58 End WL. =
B.L. Sta. 53+96.00, 10.42' Rt.
Cut Existing 16" W.L.
Install 1-16" C.I.M.J. 45' Bend
(Down-Rolled)
Connect to Existing 16" W.L.

Remove 24.6 L.F.
Existing 16" W.L.

WATERLINE RELOCATION



Design: KEK
Drawn: JDM
Approved: MWS
Scale: NOTED

Project No. 09-09-E382
CAPITAL IMPROVEMENT PROJECT
29th Street and Hoover Road
Waterline 1

November, 2013
SHEET 3 OF 4

Baughman Company, P.A.
315 Ellis St. Wichita, KS 67211 P 316-262-7271 F 316-262-0149
ENGINEERING | SURVEYING | PLANNING | LANDSCAPE ARCHITECTURE