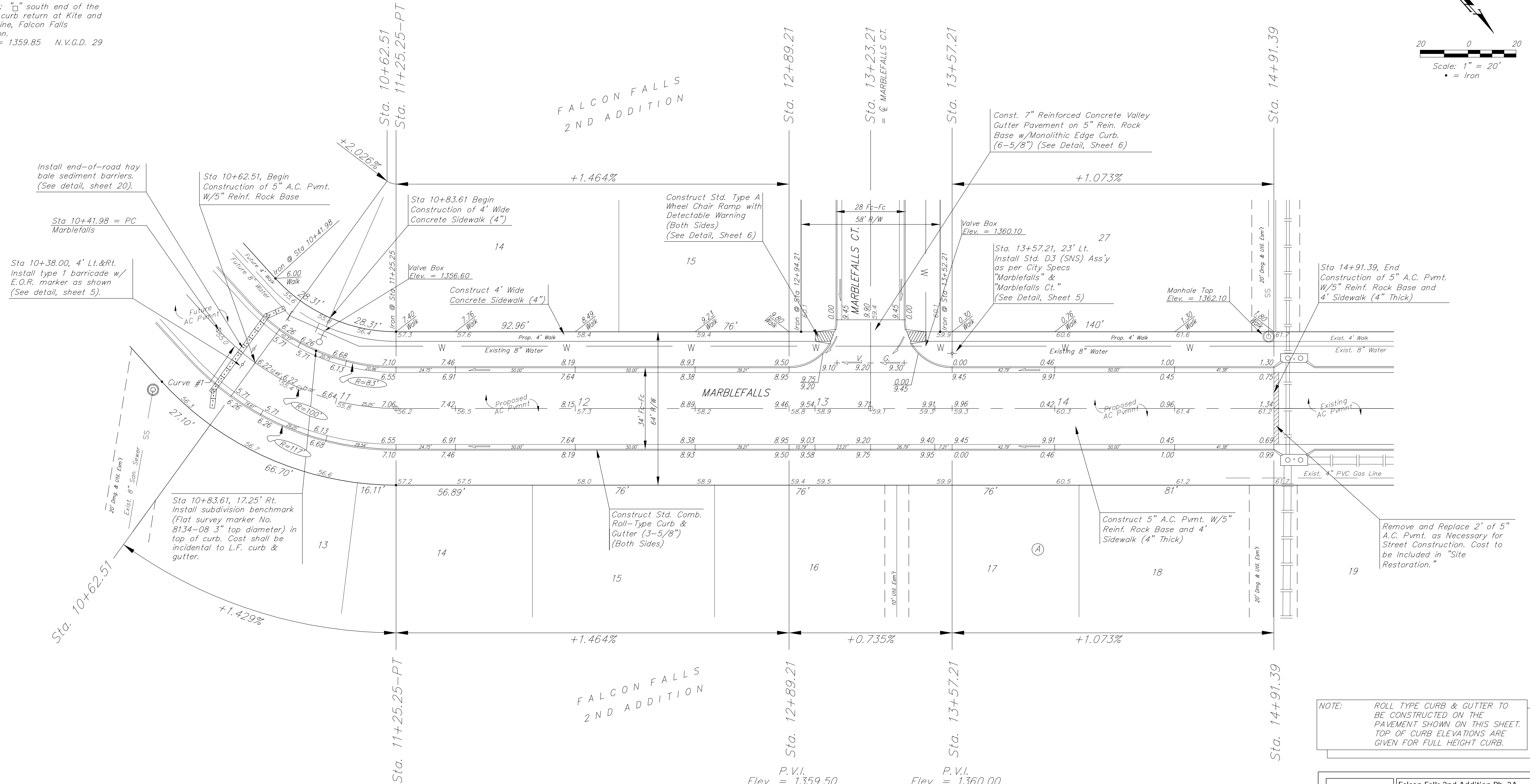
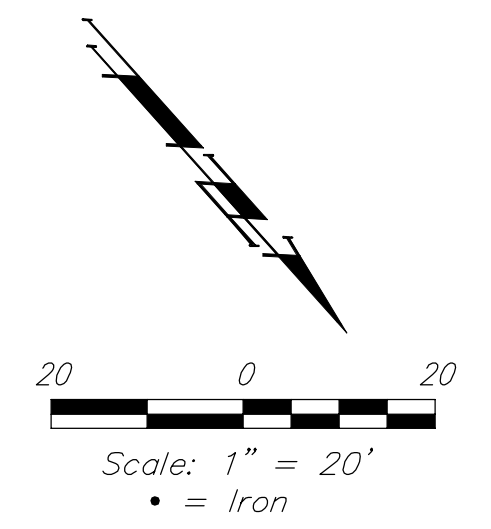


BENCHMARKS:
 BM #1: "□" CL face of catch basin, west side of Lot 4, Block 5, Falcon Falls Addition. Elev. = 1352.47 N.V.G.D. 29

BM #2: "□" south end of the south curb return at Kite and Peregrine, Falcon Falls Addition. Elev. = 1359.85 N.V.G.D. 29



Curve #1					
Curve Data Based on Centerline					
Rad. = 100' Delta = 95°24'56" Tangent = 109.93'					
Arc = 83.27' L.C. = 147.94' Def./Ft. = 34.37573 Min.					
Station	Arc	8' Left	8' Right	Defl.	Total Defl.
10+41.98	-	-	-	0°00'00"	0°00'00"
10+50.00	8.02'	12.02'	20.03'	4°35'42"	4°35'42"
10+75.00	25.00'	37.11'	61.85'	14°19'23"	18°55'05"
11+00.00	25.00'	37.11'	61.85'	14°19'24"	33°14'29"
11+25.00	25.00'	37.11'	61.85'	14°19'23"	47°33'52"
11+25.25	0.25'	0.37'	0.62'	0°08'36"	47°42'28"

P.V.I.
Elev. = 1357.10
No V.C.

P.V.I.
Elev. = 1359.50
No V.C.

P.V.I.
Elev. = 1360.00
No V.C.

Subdivision Bench Marks		
Street & Station	Location Description	Elevation
Marblefalls 10+83.61, 17.25' Lt.	Adjacent to Fire Hydrant Between Lots 13 and 14, Block E.	
Marblefalls Ct. 1+74.00, 14.25' Rt.	Adjacent to Fire Hydrant Between Lots 25 and 26, Block E.	

NOTE: ROLL TYPE CURB & GUTTER TO BE CONSTRUCTED ON THE PAVEMENT SHOWN ON THIS SHEET. TOP OF CURB ELEVATIONS ARE GIVEN FOR FULL HEIGHT CURB.



Baughman Falcon Falls 2nd Addition Ph. 3A
Marblefalls
 STA 10+62.51 TO STA 14+91.39

Baughman Company, P.A. 315 Ellis St. Wichita, KS 67211 P 316-262-7271 F 316-262-0149
 ENGINEERING | SURVEYING | PLANNING | LANDSCAPE ARCHITECTURE

PROJECT NUMBER: 472-84266
 DESIGN: TNT
 DRAWN: TNT

REVISIONS:
 APPROVED: [Signature]
 DATE: 01/14

SCALE: Noted
 SHEET: 7 OF 27

E:\Eng\Falcon Falls 2nd Ph. 3A\Str1
 09-08-E368