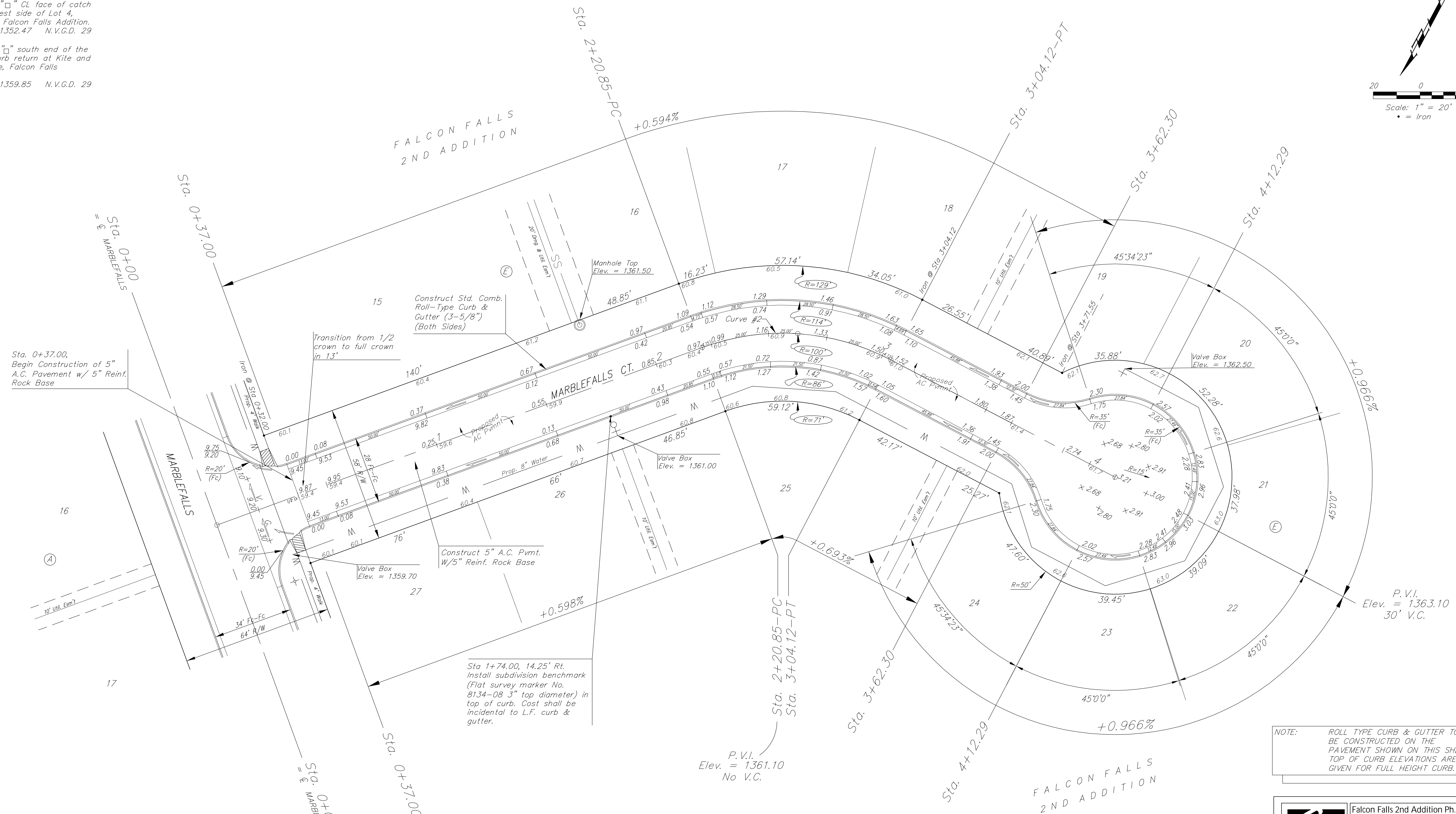
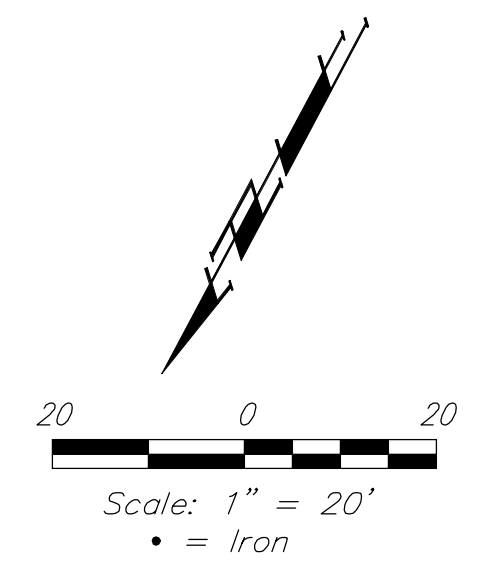


BENCHMARKS:
 BM #1: "□" CL face of catch basin, west side of Lot 4, Block 5, Falcon Falls Addition. Elev. = 1352.47 N.V.G.D. 29
 BM #2: "□" south end of the south curb return at Kite and Peregrine, Falcon Falls Addition. Elev. = 1359.85 N.V.G.D. 29



P.V.I.
 Elev. = 1361.10
 No V.C.

NOTE: ROLL TYPE CURB & GUTTER TO BE CONSTRUCTED ON THE PAVEMENT SHOWN ON THIS SHEET. TOP OF CURB ELEVATIONS ARE GIVEN FOR FULL HEIGHT CURB.

Curve #2					
Curve Data Based on Centerline					
Rad. = 100' Delta = 95°25'08" Tangent = 109.93'					
Arc = 83.27' L.C. = 147.95' Def./Ft. = 34.37693 Min.					
Station	Arc	8' Left	8' Right	Defl.	Total Defl.
2+20.85	-	-	-	0°00'00"	0°00'00"
2+25.00	4.15'	10.16'	6.43'	2°22'40"	2°22'40"
2+50.00	25.00'	60.61'	38.35'	14°19'25"	16°42'05"
2+75.00	25.00'	60.61'	38.35'	14°19'26"	31°01'31"
3+00.00	25.00'	60.61'	38.35'	14°19'25"	45°20'56"
3+04.12	4.12'	10.09'	6.38'	2°21'38"	47°42'34"



Baughman Falcon Falls 2nd Addition Ph. 3A
Marblefalls Ct.
 STA 0+00 TO STA 4+12.29

Baughman Company, P.A. 315 Ellis St. Wichita, KS 67211 P 316-262-7271 F 316-262-0149
 ENGINEERING | SURVEYING | PLANNING | LANDSCAPE ARCHITECTURE

PROJECT NUMBER 472-94266	DESIGN TNT	DRAWN TNT
REVISIONS:	APPROVED	DATE 01/14
	SCALE Noted	
	SHEET	

8 OF 27

E:\Eng\Falcon Falls 2ndPh. 3A\Str\Str1 09-08-E368