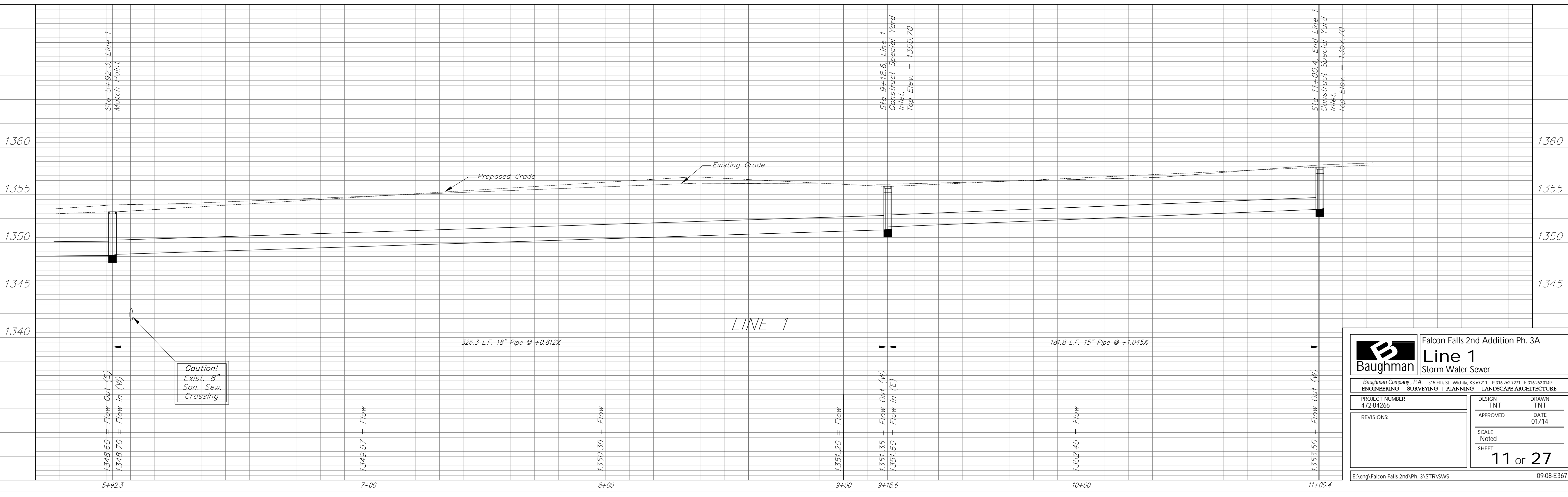
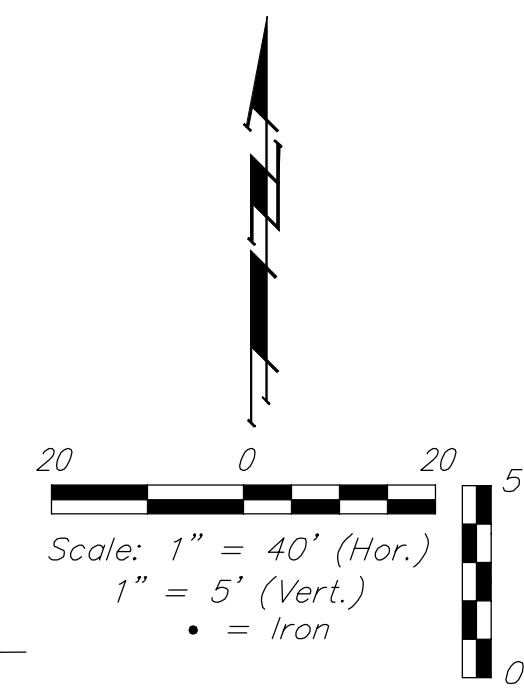
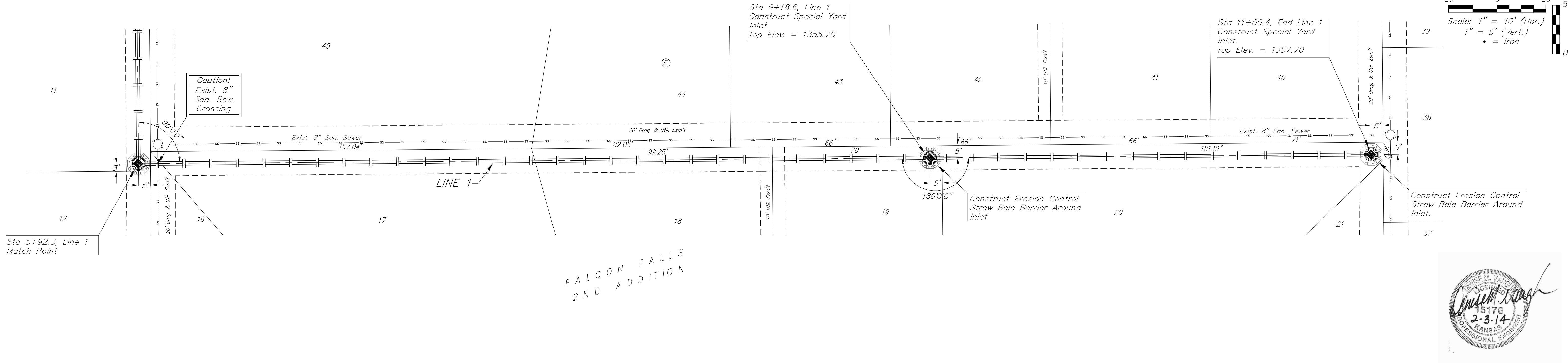


FALCON FALLS
2ND ADDITION



B Baughman		Falcon Falls 2nd Addition Ph. 3A Line 1 Storm Water Sewer	
Baughman Company, P.A. 315 Ellis St. Wichita, KS 67211 P: 316-262-7271 F: 316-262-0149 ENGINEERING SURVEYING PLANNING LANDSCAPE ARCHITECTURE			
PROJECT NUMBER 472-94266	DESIGN TNT	DRAWN TNT	
REVISIONS:	APPROVED	DATE 01/14	
	SCALE Noted	SHEET	11 OF 27
E:\eng\Falcon Falls 2ndVPh. 3\STR/SWS			09-08-E367