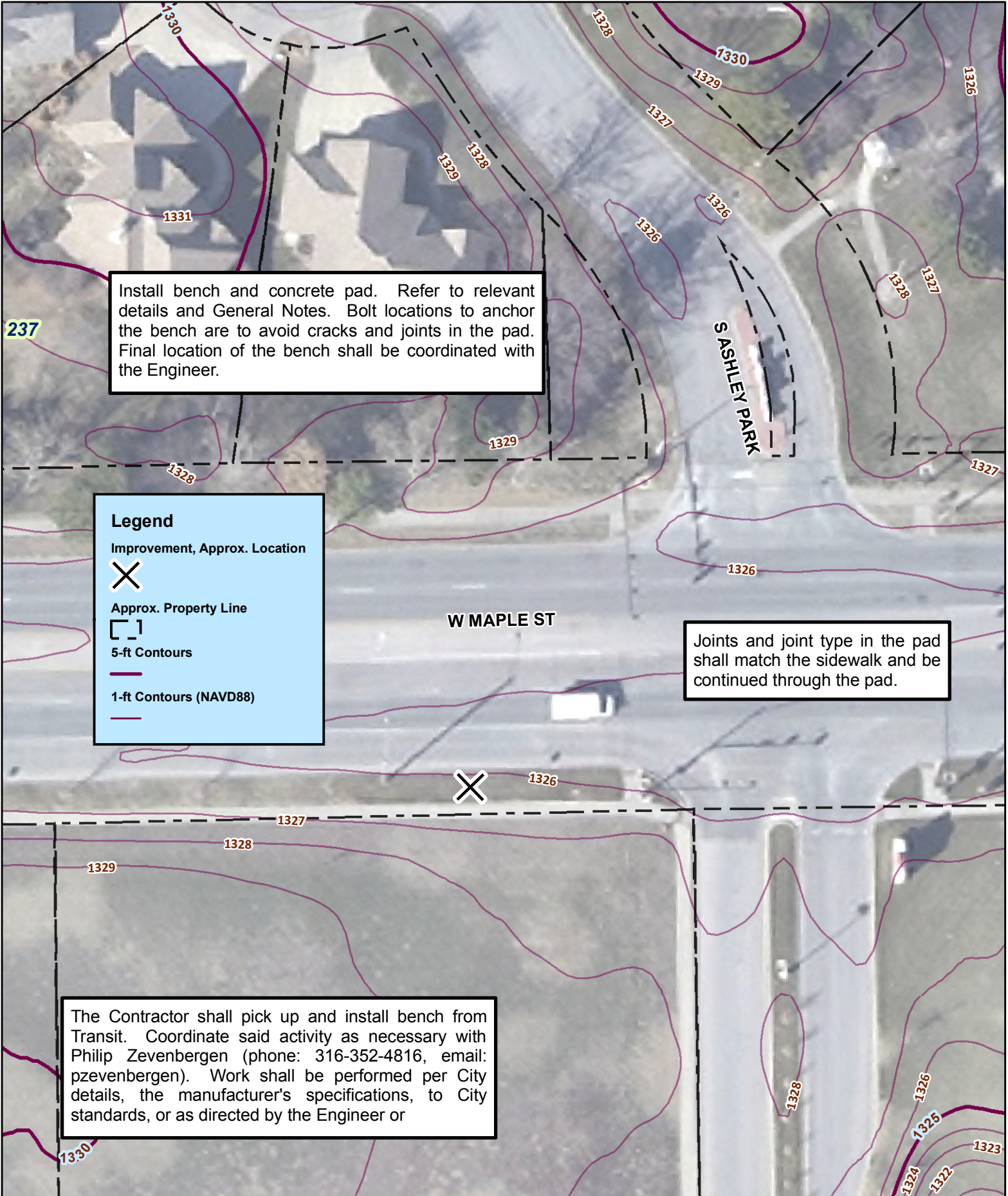


SW of Maple and Ashley Park - 7575 W Maple St



Attachment A - 472-85156 Bench and Shelter Installation, West Side Service, Wichita, KS



Install bench and concrete pad. Refer to relevant details and General Notes. Bolt locations to anchor the bench are to avoid cracks and joints in the pad. Final location of the bench shall be coordinated with the Engineer.

**Legend**

- Improvement, Approx. Location
- Approx. Property Line
- 5-ft Contours
- 1-ft Contours (NAVD88)

Joints and joint type in the pad shall match the sidewalk and be continued through the pad.

The Contractor shall pick up and install bench from Transit. Coordinate said activity as necessary with Philip Zevenbergen (phone: 316-352-4816, email: pzevenbergen). Work shall be performed per City details, the manufacturer's specifications, to City standards, or as directed by the Engineer or