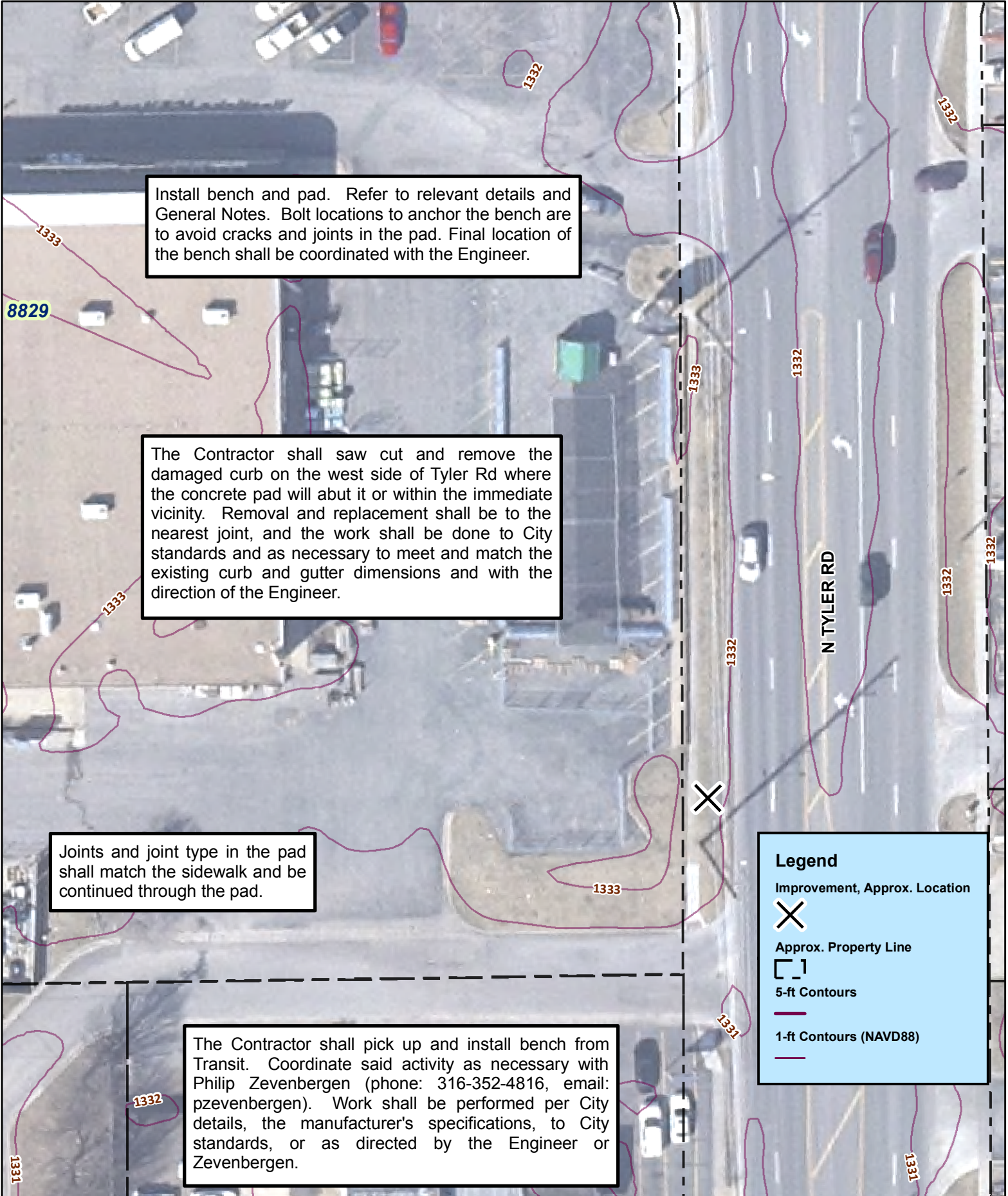


SW of Tyler and Central - 8829 W Central Ave



Attachment A - 472-85156 Bench and Shelter Installation, West Side Service, Wichita, KS



Install bench and pad. Refer to relevant details and General Notes. Bolt locations to anchor the bench are to avoid cracks and joints in the pad. Final location of the bench shall be coordinated with the Engineer.

The Contractor shall saw cut and remove the damaged curb on the west side of Tyler Rd where the concrete pad will abut it or within the immediate vicinity. Removal and replacement shall be to the nearest joint, and the work shall be done to City standards and as necessary to meet and match the existing curb and gutter dimensions and with the direction of the Engineer.

Joints and joint type in the pad shall match the sidewalk and be continued through the pad.

The Contractor shall pick up and install bench from Transit. Coordinate said activity as necessary with Philip Zevenbergen (phone: 316-352-4816, email: pzevenbergen). Work shall be performed per City details, the manufacturer's specifications, to City standards, or as directed by the Engineer or Zevenbergen.

Legend

- Improvement, Approx. Location
- Approx. Property Line
- 5-ft Contours
- 1-ft Contours (NAVD88)