

SE of Central and Flora - 661 N Flora



Attachment A - 472-85156 Bench and Shelter Installation, West Side Service, Wichita, KS

Legend

Improvement, Approx. Location

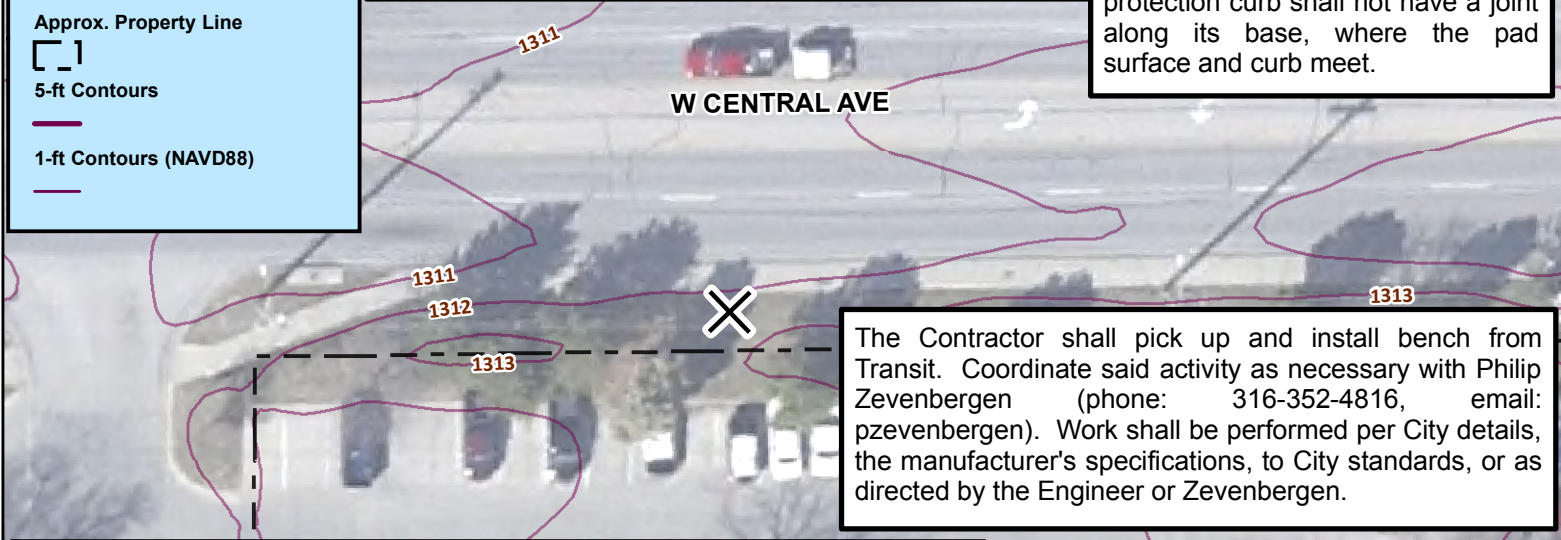
Approx. Property Line

5-ft Contours

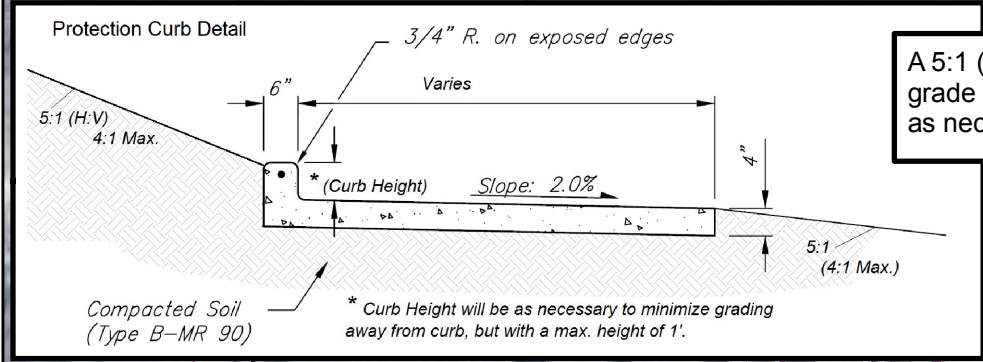
1-ft Contours (NAVD88)

Install concrete pad and bench (refer to relevant details). Bolt locations to anchor the bench are to avoid cracks and joints in the pad. Final location of the pad and bench shall be coordinated with the Engineer.

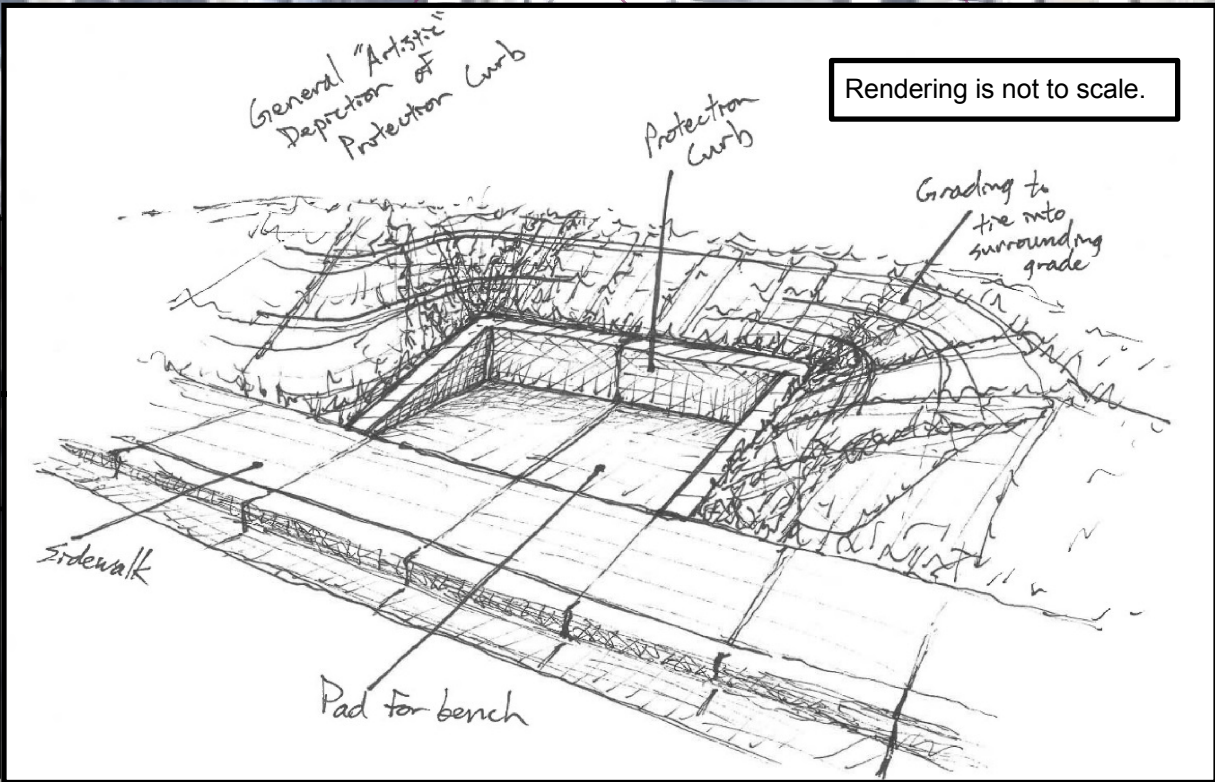
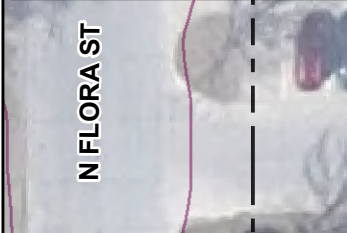
Joints and joint type in the pad shall match and be continued through the curb where they occur in the sidewalk or pad, except that the protection curb shall not have a joint along its base, where the pad surface and curb meet.



The Contractor shall pick up and install bench from Transit. Coordinate said activity as necessary with Philip Zevenbergen (phone: 316-352-4816, email: pzevenbergen). Work shall be performed per City details, the manufacturer's specifications, to City standards, or as directed by the Engineer or Zevenbergen.



A 5:1 (H:V) slope is preferred, but the Contractor may grade at a maximum steepness of 4:1 at this location, as necessary to tie into existing, surrounding grade.



Rendering is not to scale.

Install protection curb with proposed concrete pad that surrounds the east, west, and south edges of the pad. The top of curb shall have an elevation that transitions from the existing sidewalk on the east and west sides to an elevation of 1' above the south edge of the concrete pad. The top of the curb shall be 6" wide. The outer, buried portion of the curb wall shall be vertical. Refer to the protection curb detail.