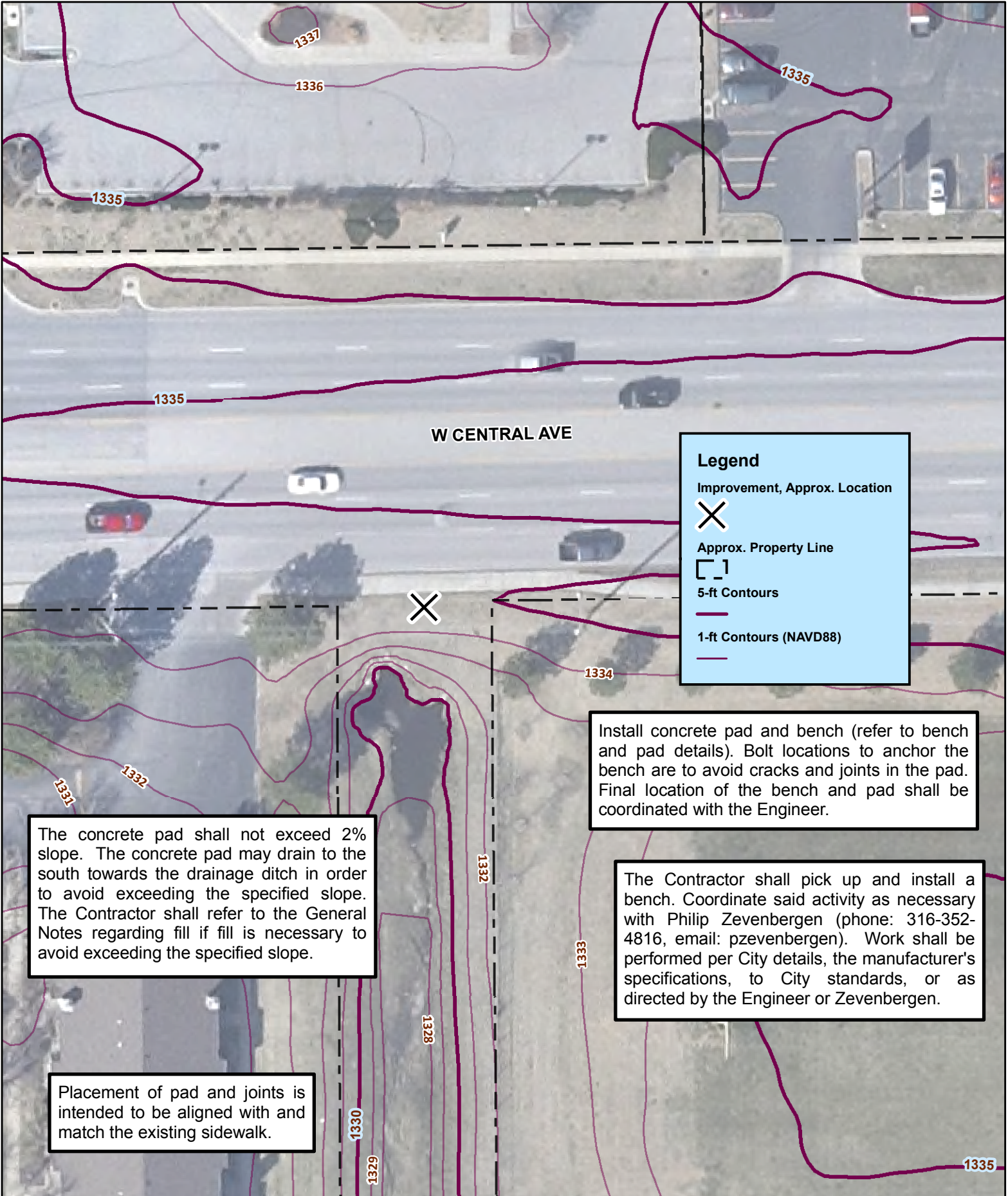


Central - 8405 W Central Ave



Attachment A - 472-85156 Bench and Shelter Installation, West Side Service, Wichita, KS



**Legend**

- Improvement, Approx. Location
- Approx. Property Line
- 5-ft Contours
- 1-ft Contours (NAVD88)

Install concrete pad and bench (refer to bench and pad details). Bolt locations to anchor the bench are to avoid cracks and joints in the pad. Final location of the bench and pad shall be coordinated with the Engineer.

The concrete pad shall not exceed 2% slope. The concrete pad may drain to the south towards the drainage ditch in order to avoid exceeding the specified slope. The Contractor shall refer to the General Notes regarding fill if fill is necessary to avoid exceeding the specified slope.

The Contractor shall pick up and install a bench. Coordinate said activity as necessary with Philip Zevenbergen (phone: 316-352-4816, email: pzevenbergen). Work shall be performed per City details, the manufacturer's specifications, to City standards, or as directed by the Engineer or Zevenbergen.

Placement of pad and joints is intended to be aligned with and match the existing sidewalk.