

AS BUILT PLANS

Contractor: Mies
 Inspector: Don Eddingfield, Baughman Co.
 pdf's by: KEK, 2/13/14

STORMWATER DRAIN IMPROVEMENTS

to serve

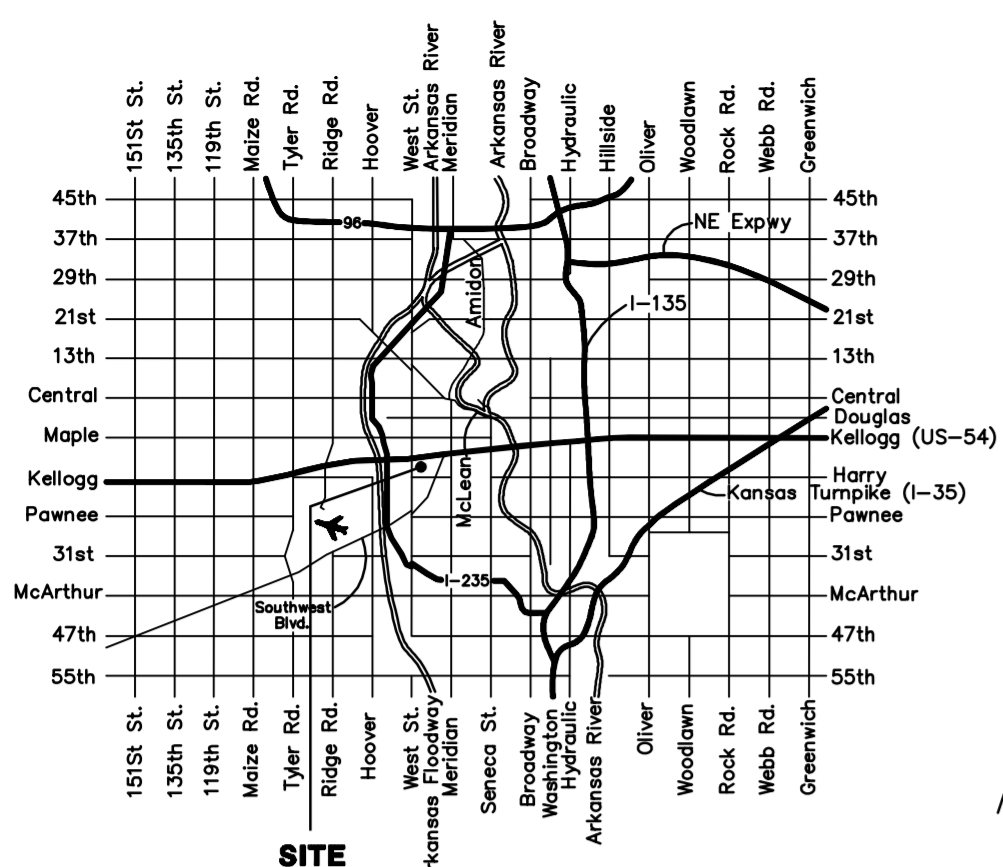
Star Lumber Facility

Part of Lot 1, Block 1, Goebel Bros. 4th Addition

Private Project Drainage: 0216 PPD (607861)

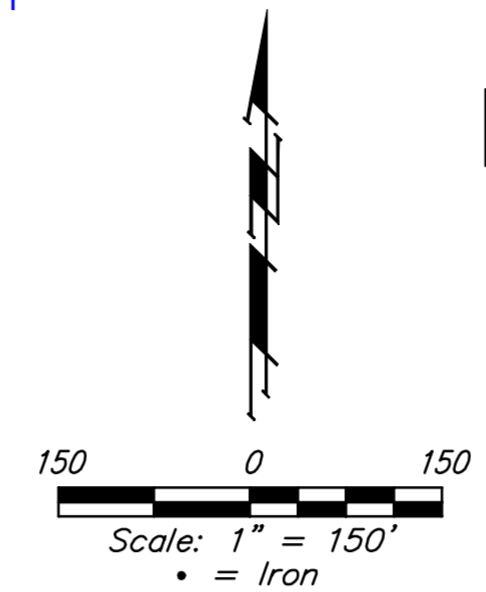
CITY OF WICHITA, KANSAS

Gary Janzen, P.E. - City Engineer
 January 2014



VICINITY MAP

KELLOGG / US Hwy 54



BENCHMARKS

Benchmark 97: Cross, along east edge of pavement.
 Elev. = 1298.99 (NAVD88)
 Benchmark 98: Cross, north side of railspur headwall.
 Elev. = 1300.32 (NAVD88)
 Benchmark 99: Cross, NE corner of Area Inlet.
 Elev. = 1299.68 (NAVD88)

Site ERU Information

Total Area:	±1,033,390sq. ft. (23.72 acres)
Ex. Conditions:	
Impervious Area:	±491,950 sq. ft. (11.29acres)
Building Area:	±261,360 sq. ft. (6.00acres)
Total Impervious	±753,310 sq. ft. (17.29acres)
Improvements:	
Reconst. Impervious:	±40,790 sq. ft. (0.94acres)
Added Pavement/gravel:	±26,770 sq. ft. (0.79acres)
Building Area:	±24,000 sq. ft. (0.55acres)
Added Impervious	±52,770 sq. ft. (1.35acres)
Regraded Pervious:	±85,680 sq. ft. (1.97acres)
Net Area Disturbed:	±179,240 sq. ft. (4.11acres)
Net Post Conditions:	
Impervious Area:	±520,720 sq. ft. (11.95acres)
Building Area:	±285,360 sq. ft. (6.55acres)
Total Impervious	±806,080 sq. ft. (18.51acres)

SHEET INDEX:

Title Sheet	1
Line 1 & 1A	2
Line 2 & HG6 Detail	3
ERU Plan	4
Reference Grading Plan	5
Std Manhole Detail (Cast in Place)	6
Plat copy	7

Details available upon at City of Wichita web site or by request.

- ### GENERAL NOTES:
- Contractor will be required to provide notice to utility companies a minimum of forty-eight (48) hours prior to any excavation, as follows:
 Kansas One-Call 687-2470
 The Contractor must notify the following in case of an emergency:
 Cox Communications 262-4270
 Kansas Gas Service 1-888-482-4950
 Westar Energy 383-8650
 Black Hills Energy (Gas) 1-800-303-0357
 ATT 268-2245
 City of Wichita Water Dept. 268-4563
 City of Wichita Sewer Maint. 268-4024
 City of Wichita Storm Sewer Maint. 268-4090
 City of Wichita Traffic Maint. 268-4034
 - Utility service lines, poles, valve boxes, meters, and etcetera are to be adjusted as necessary by others prior to construction unless the plans specifically call for their adjustment by the Contractor or unless the plans specifically identify a utility to be adjusted by its owner during construction. Existing utilities and their location, as shown on the plans, represent the best information obtainable for design. The Contractor will be required to work around existing utilities within the right-of-way which do not conflict with proposed construction.
 - All disturbed R/W areas not intended for pavement or sidewalk construction shall be seeded with Kansas Premium Fescue Blend at a rate of 8 lb./1000 Sq. Ft., fertilized with a 16-20-6 ratio at a rate of 4 lb./1000 Sq. Ft., and mulched with Prairie Hay at a rate of 92 lb./1000 Sq. Ft. Mulch shall be "patted" with forks or punched into soil to reduce loss due to wind.
 - Rubble from the removal of miscellaneous structures and excess excavation which is to be wasted shall be disposed of on sites to be provided by the Contractor. These sites shall be approved by the Engineer as to suitability, appearance and site location. Locations, in the opinion of the Engineer, that will leave an unsightly appearance will not be approved. All disposal sites must be approved by the Kansas Department of Health and Environment. Material either stockpiled or disposed of in a flood plain would require a Kansas State Board of Agriculture permit. Any material dumped in waters of the United States or wetlands is subject to U.S. Corps of Engineers permitting regulations. Any material buried or stockpiled beyond approved construction limits would require additional archaeological investigations unless buried in a previously approved borrow location.
 - Contractor shall furnish the inspector with a copy of the manufacturer's certification for any pipe used on this project after completion of pipe installation. The engineer will not certify the project to the city until pipe certification has been received.
 - Trees and shrubs in public right-of-way which are in direct conflict with proposed new construction shall be removed by the Contractor with the Engineer's approval. Trees and shrubs which are not in direct conflict with proposed new construction shall be saved and protected from damage.
 - All sewer lines and appurtenances shall be installed in accordance with the most recent edition of City of Wichita, Kansas Standard Specifications for the Construction of City Projects.
 - Contractor shall not start work on the project until the project inspector is assigned to the project and is present on the site. Contractor shall not start on the project until all necessary bonds and permits have been obtained. Bonds may include but are not limited to Statutory, Performance & Maintenance Any work done without inspection will be required to be uncovered for inspection.
 - Stormsewer Line 1 & 1A, will be a private system. Maintenance and inspection will be the owners responsibility, see the O&M manual developed for this system.
 - The Baseline for this project is East line of the property, see cover page.

Water Quality Measures

Downstream Channel Protection is not required. This site drains into an existing Groundwater detention basin with no outfall.

Water Quality requirements are to be accomplished with a Hydroworks HG6 Water Quality Structure located on site. This structure are the responsibility of the owner for all maintenance and records. A portion of the site improvements are draining directly to an existing Inlets.

Area Draining to HG6 unit:

Existing Impervious:	44,260 sq. ft.
New Imp. Area:	23,370 sq. ft.
Future Imp. Area:	150,750 sq. ft.
Total Drain area:	218,380 sq. ft.

An HG6 Water Quality Unit with a Sump Depth of 6'8" will be adequate to treat the current and future Water Quality Volume.

A portion of this site improvement, 29,400 new imperv. & 31,160 of ex. imperv. will be drain to existing area inlets. Subject to the noted existing pavement being routed to the HG6 unit, the overall site meets the water quality requirements for this and the future proposed improvements to this site. This improvement has been developed to satisfy Section 16.32 of the City Code.



APPROVED AS NOTED
 BY CITY ENGINEER OF WICHITA

Engineering *Don Eddingfield* 1-16-14
 Stormwater *A.H.C. Lu* 1-16-14

NOTE TO CONTRACTORS

Installation, inspection and testing for this project is to be provided by a Licensed Consulting Engineering Firm under contract with the Owner/Developer. Said inspection to be in accordance with the City of Wichita standard construction engineering practices and certified by a Licensed Professional Engineer. No work shall be performed in dedicated easements or public right-of-way by the Contractor without such inspection nor shall any work be commenced without written authorization by the City Engineer. All Construction and Materials shall comply with the City of Wichita Specifications and Standards (on file and available in the City Engineer's Office).

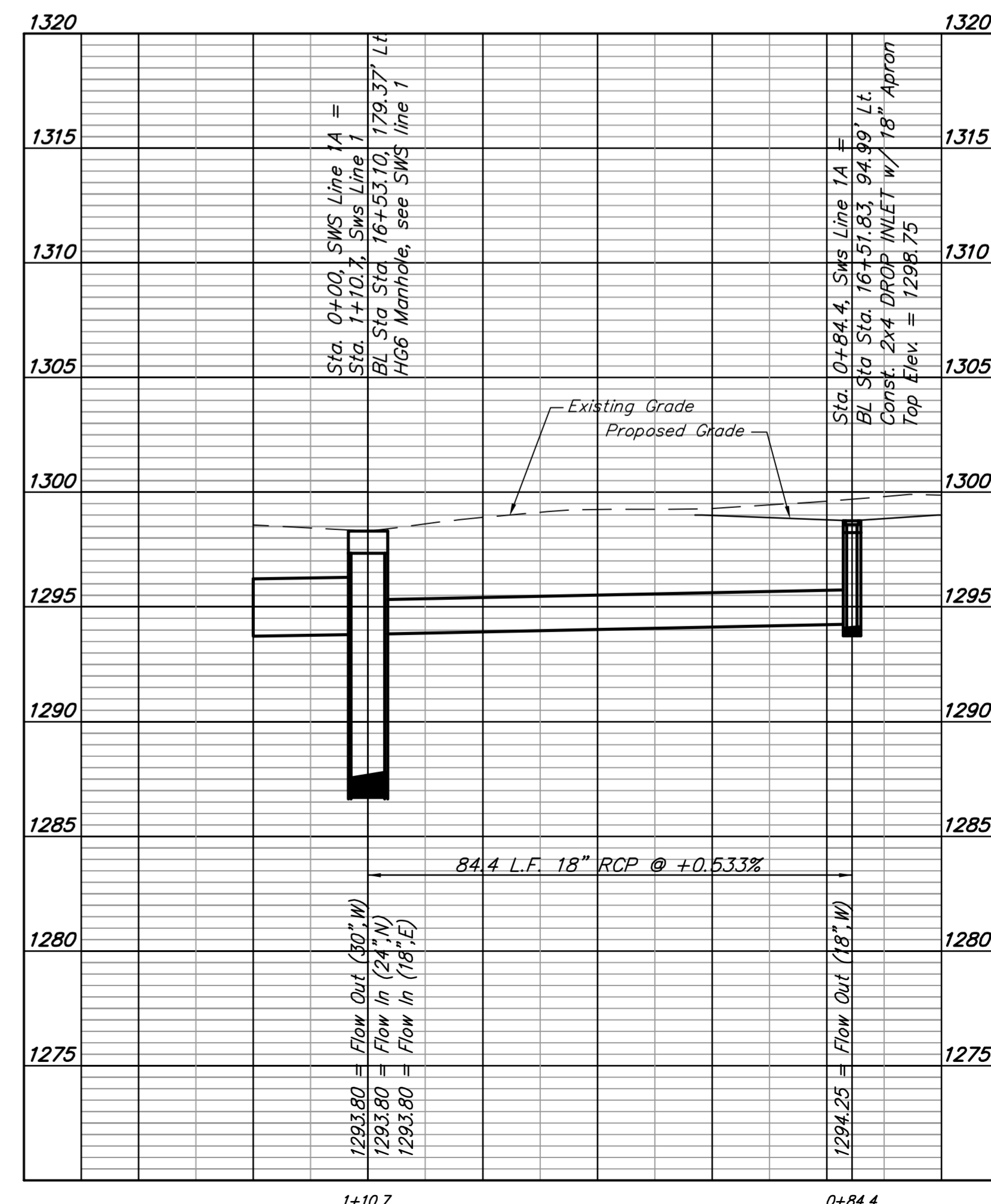
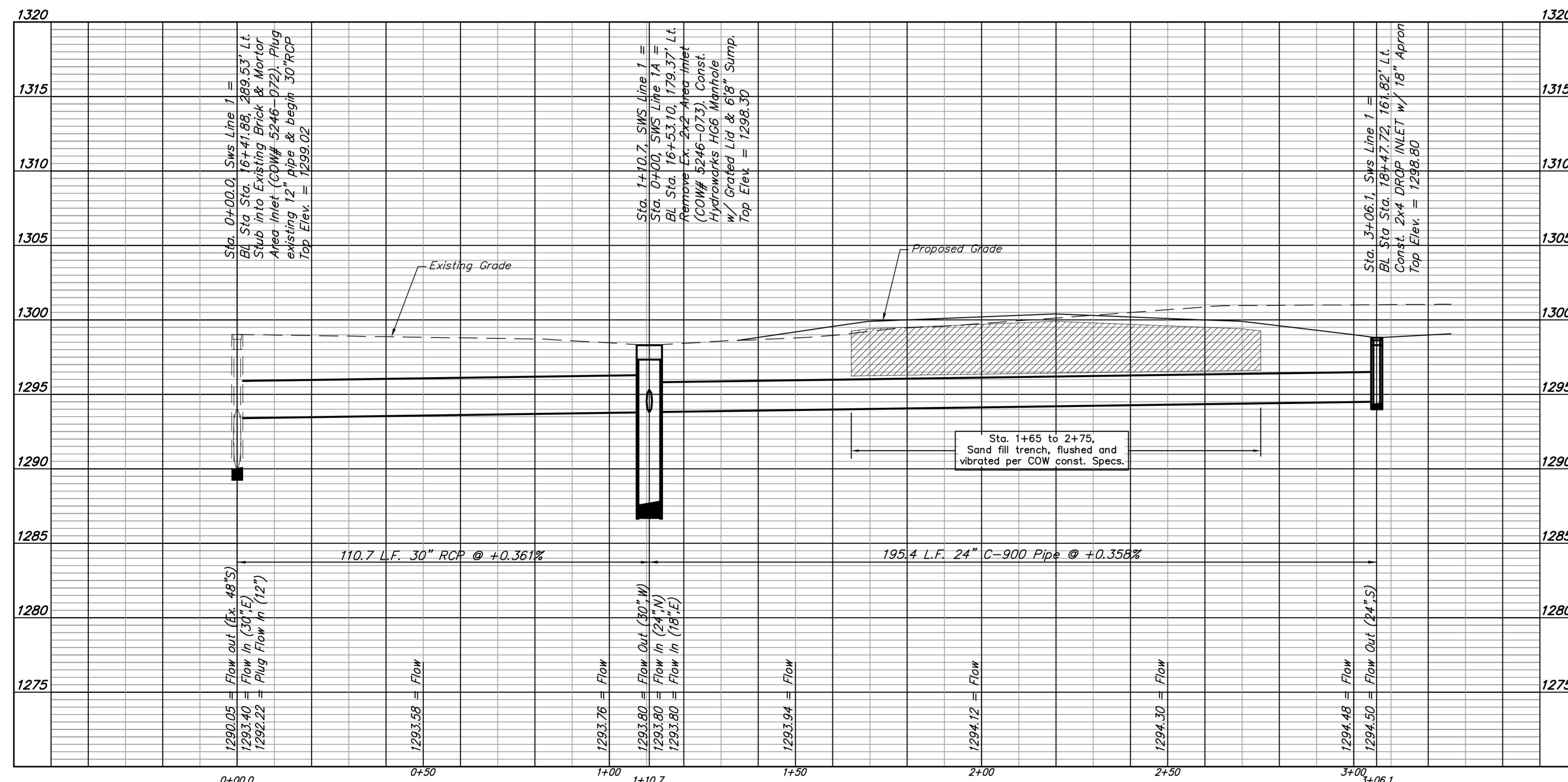
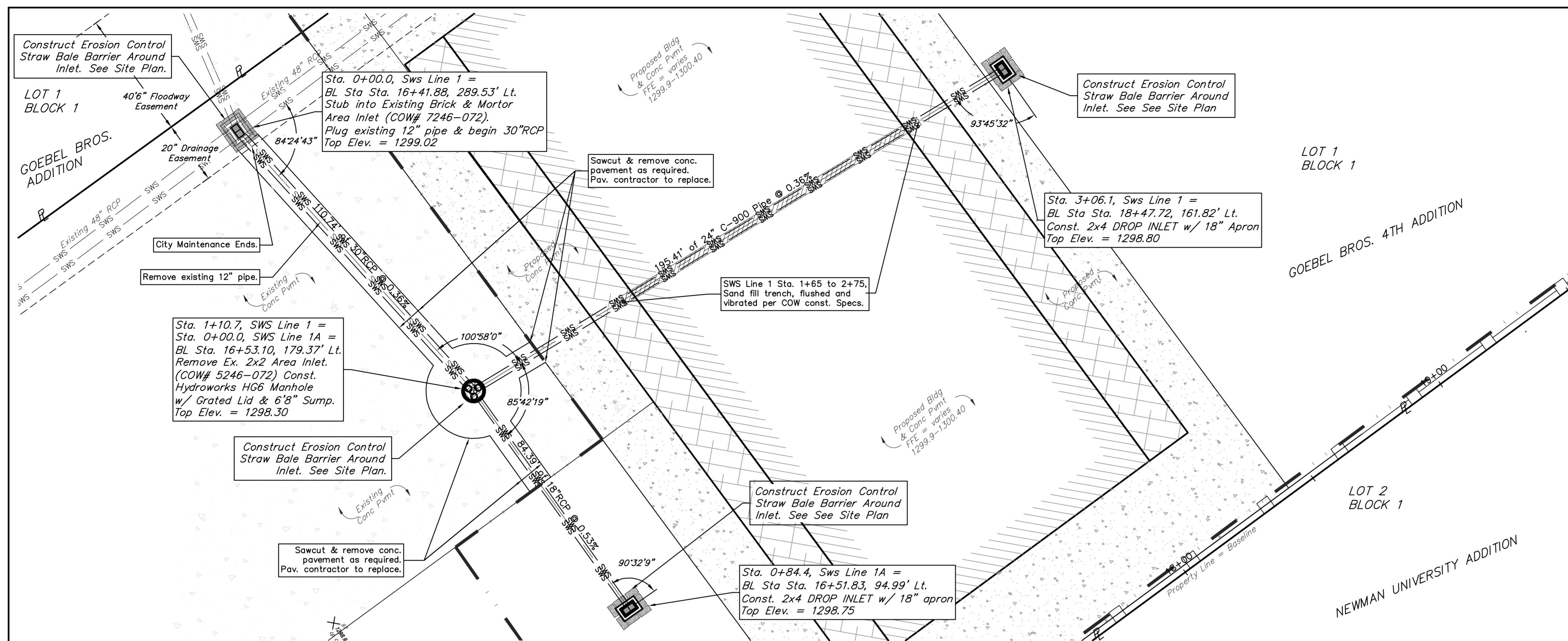
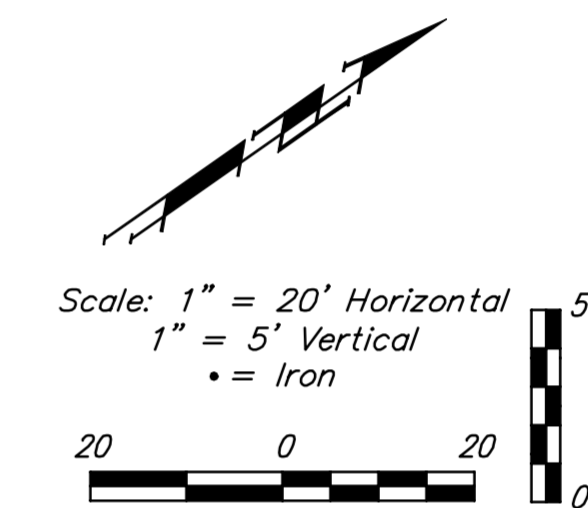
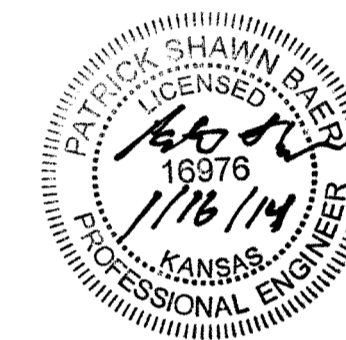


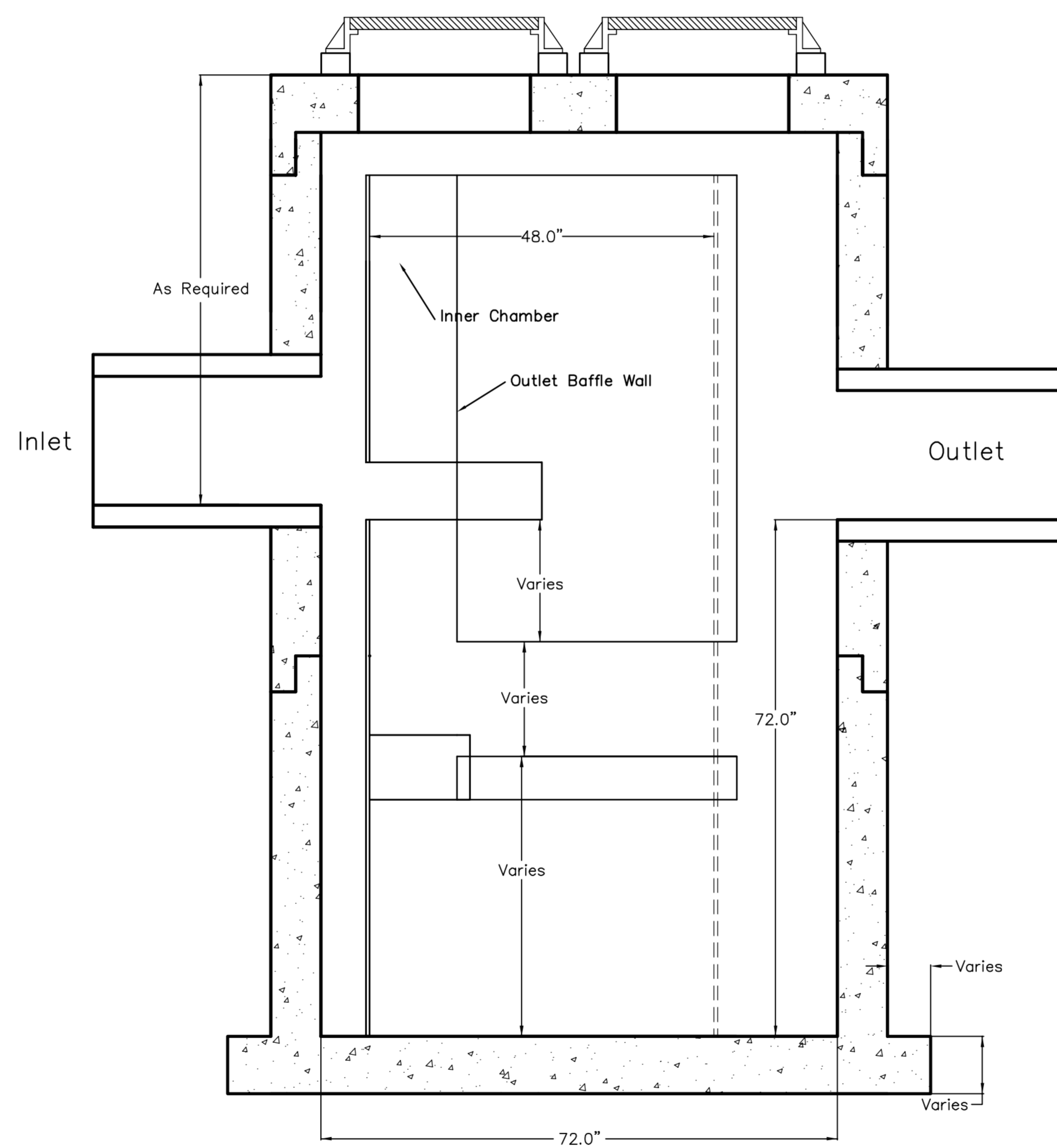
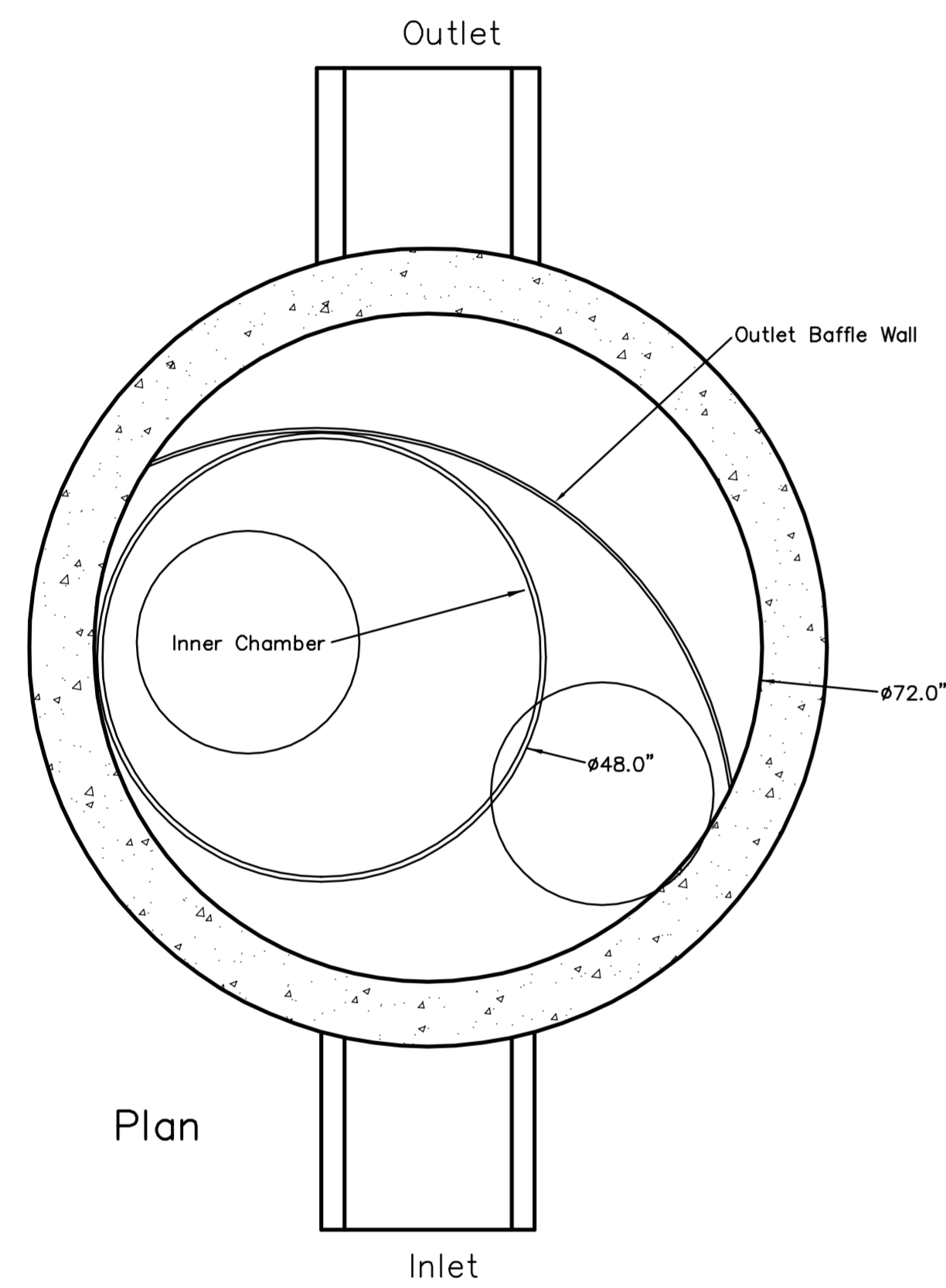
Baughman Company, P.A. 315 Ellis St. Wichita, KS 67211 P 316-262-7271 F 316-262-0149
 ENGINEERING | SURVEYING | PLANNING | LANDSCAPE ARCHITECTURE

BENCHMARKS

Benchmark 97: Cross, along east edge of pavement.
 Elev. = 1298.99 (NAVD88)
 Benchmark 98: Cross, north side of railroad headwall.
 Elev. = 1300.32 (NAVD88)
 Benchmark 99: Cross, NE corner of Area Inlet.
 Elev. = 1299.68 (NAVD88)

Note: Stormsewer Line 1 & 1A, will be a private system. Maintenance and inspection will be the owners responsibility, see the O&M manual developed for this system.





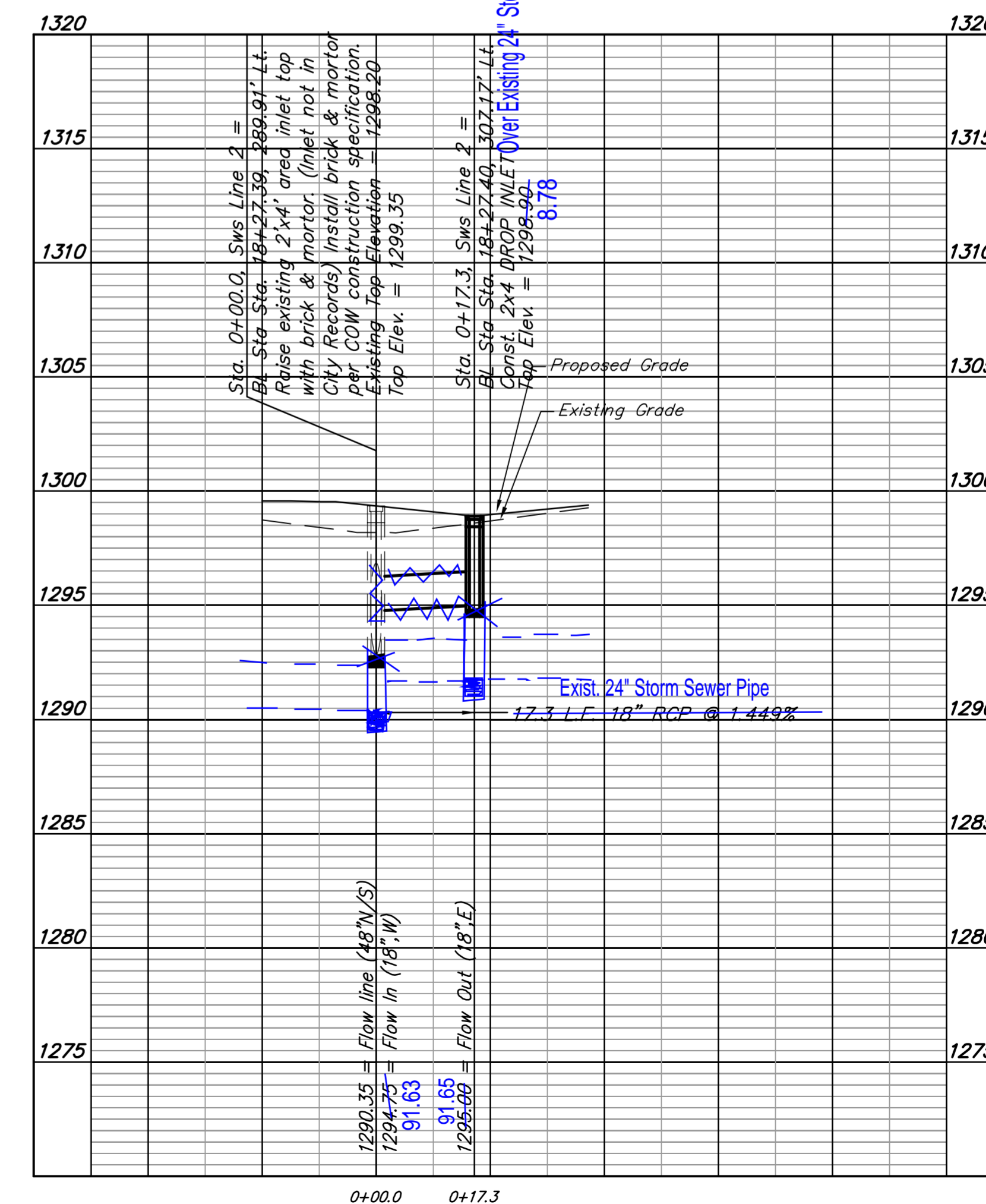
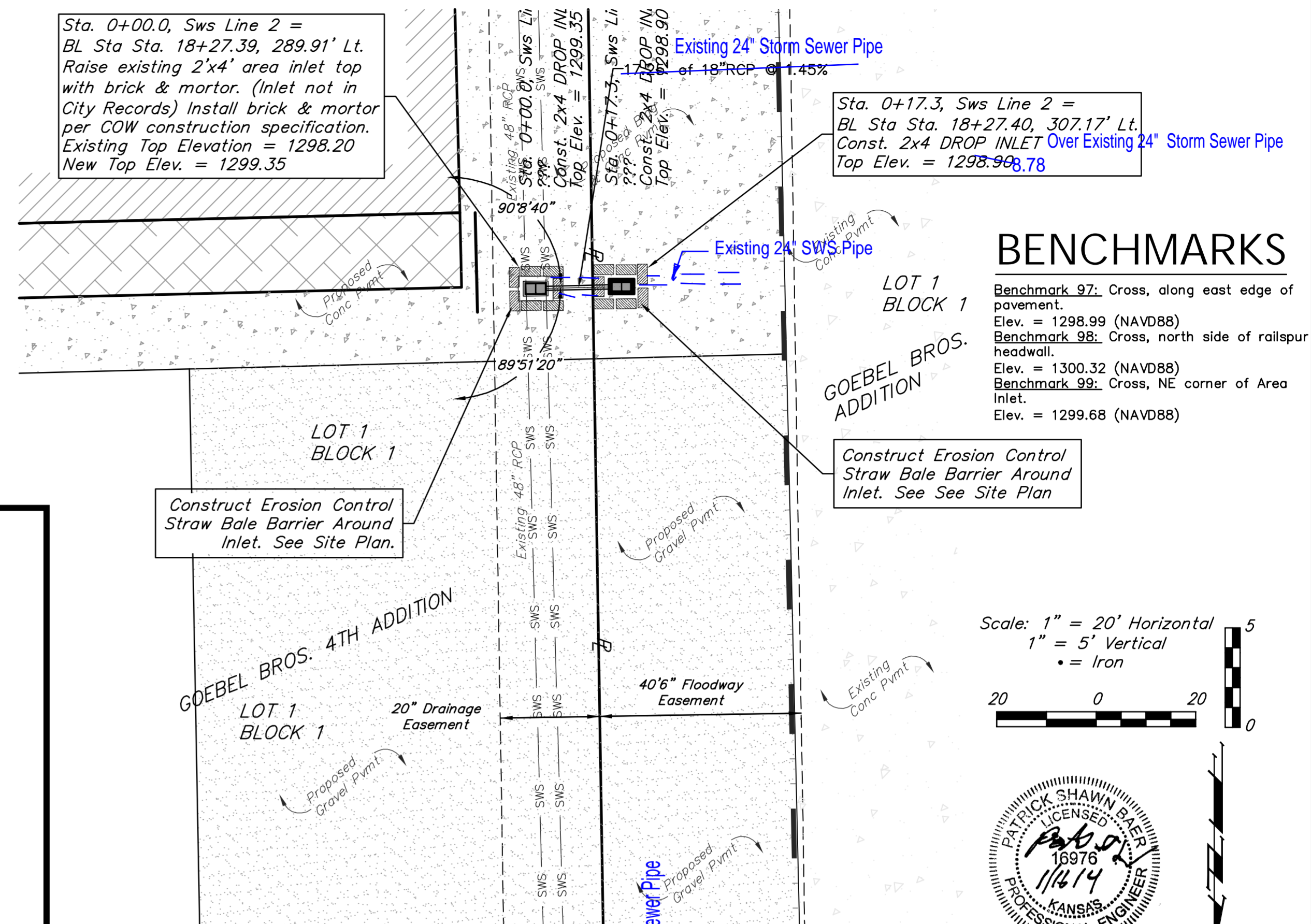
U.S. Patent No. 6,951,619

Dimensions in inches
 Permanent Pool Volume = 1250 US gallons
 The Hydroguard must be cleaned after the construction period if it is used as a sediment and erosion control measure
 The Hydroguard should be inspected once per year for stabilized sites
 Inspection will determine the maintenance frequency (annual maintenance or once every two years typical for stabilized sites)
 Sites with unstable conditions (exposed soil or materials storage) will require more frequent inspection and maintenance

Hydroworks, LLC
 50 S. 21st St., Kenilworth, NJ 07033
 Phone: 888-290-7900 Fax: 888-783-7271
 Web: www.hydroworks.com

Hydroworks HG6 (72"Ø)

PROJECT: WATERWALK WEST ADDITION
 LOCATION: WICHITA, KS
 REVISION DATE: 02/10/2011

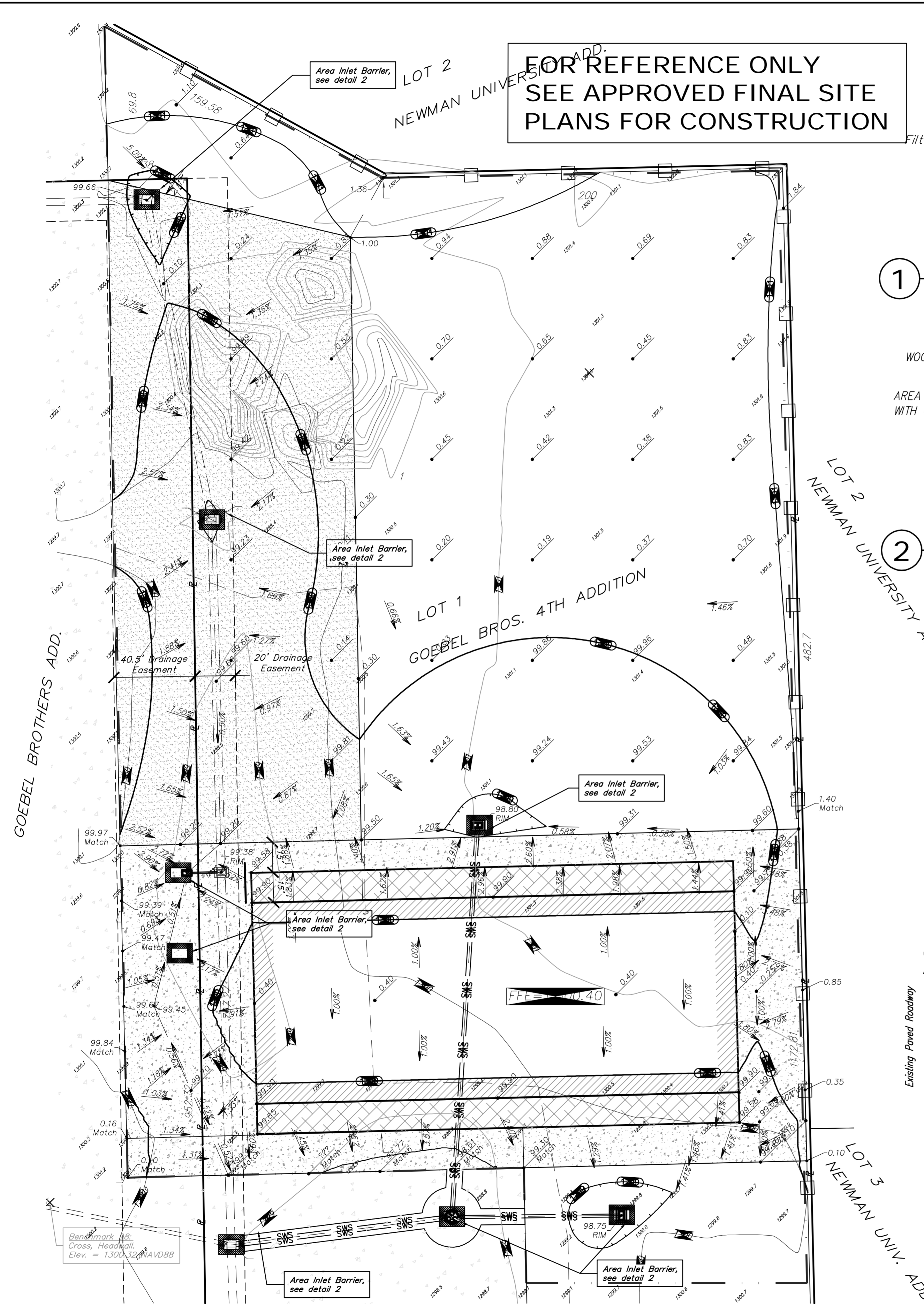


REVISIONS

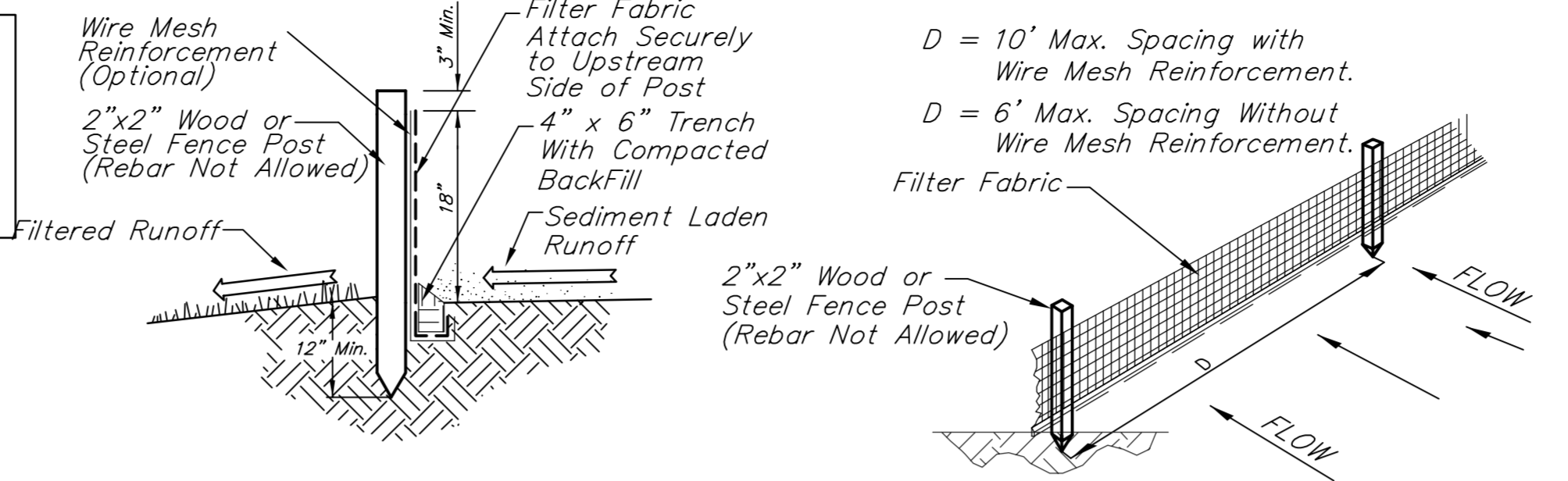
SHEET 3 OF 7

Goebel Bros. 4TH Addition (3505 McCormick)
 SWS Line 2 Detail
 Hydroworks HG6 Detail
 Storm Water Drain Improvements

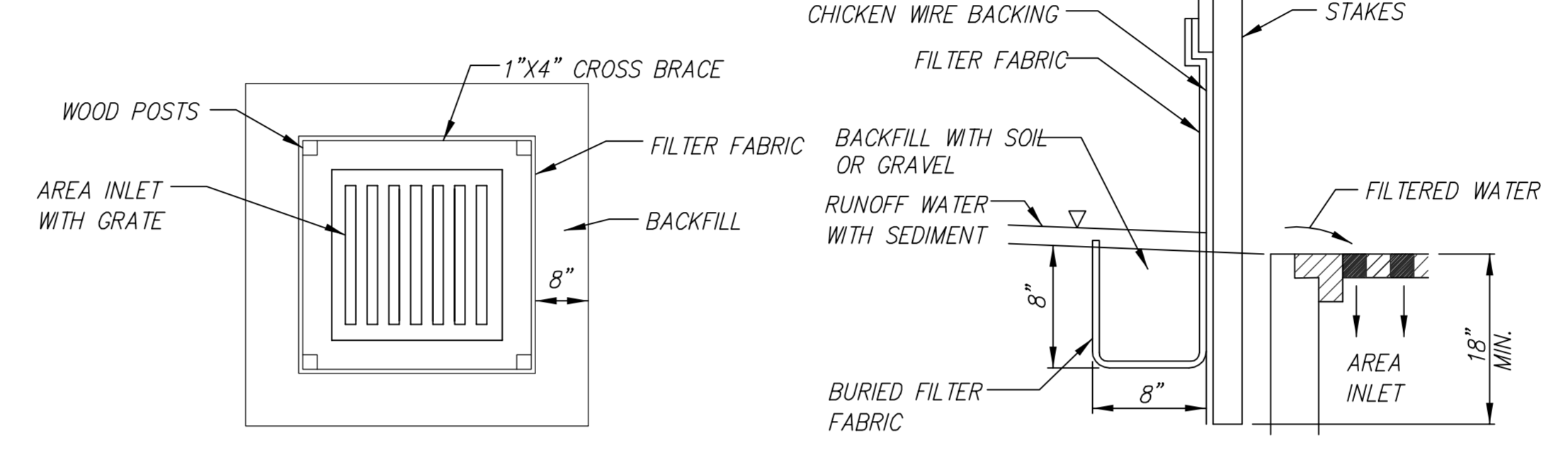
Baughman Company, P.A.
 315 E.H.S. Wichita, KS 67211 P: 316-262-7271 F: 316-262-8049
 ANNUAL RENEWAL REQUIRED IN KANSAS. LICENSE # 16976
 Baughman



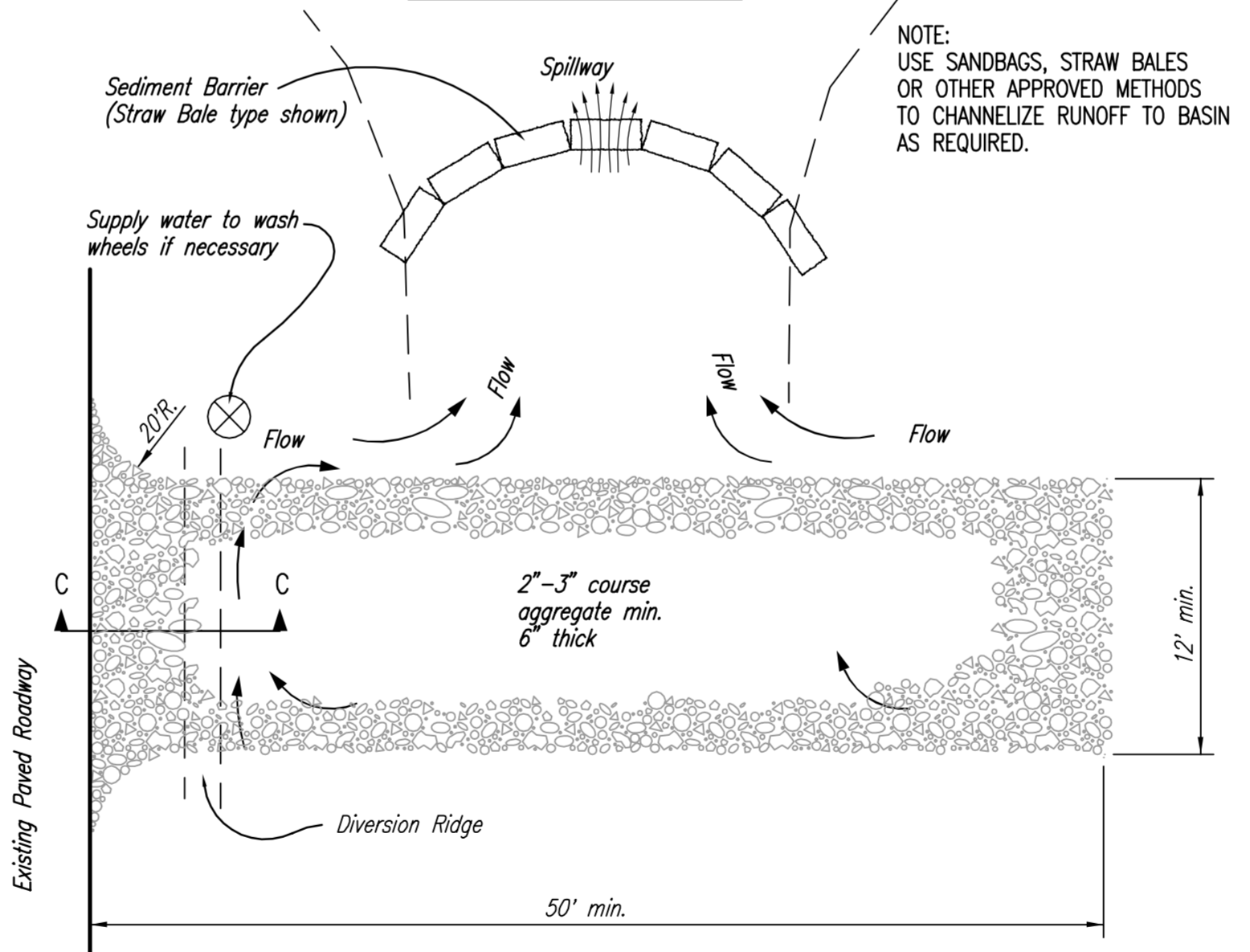
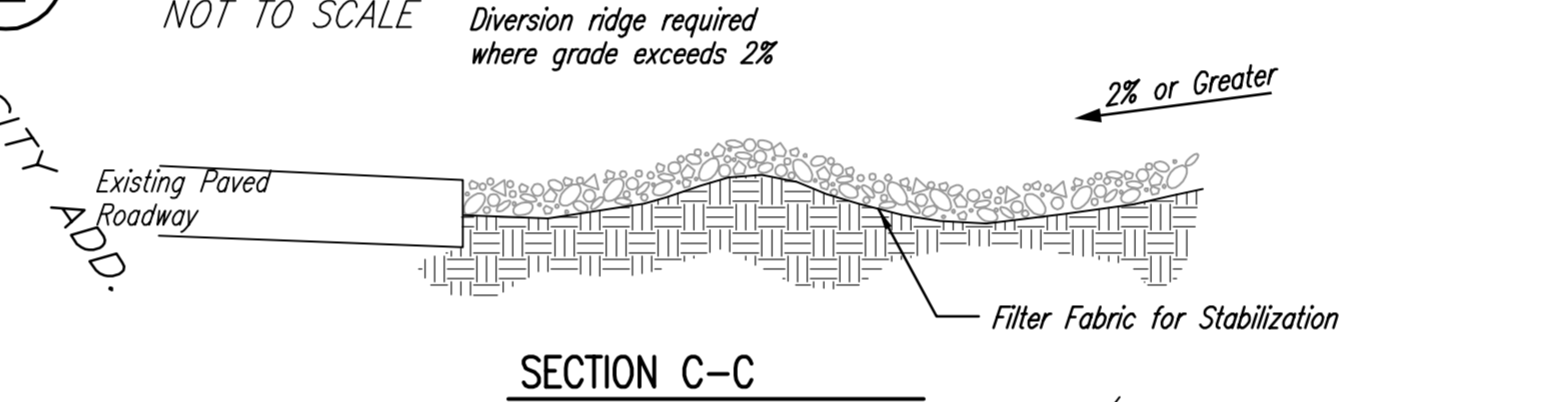
**FOR REFERENCE ONLY
SEE APPROVED FINAL SITE
PLANS FOR CONSTRUCTION**



1 SILT FENCE DETAIL
NOT TO SCALE



2 SILT FENCE BARRIERS FOR AREA INLETS
NOT TO SCALE



3 CONSTRUCTION ENTRANCE DETAIL
NOT TO SCALE

- NOTES:
1. THE ENTRANCE SHALL BE MAINTAINED IN A CONDITION THAT WILL PREVENT TRACKING OR FLOWING OF SEDIMENT ONTO PUBLIC RIGHTS-OF-WAY. THIS MAY REQUIRE TOP DRESSING, REPAIR AND/OR CLEANOUT OF ANY MEASURES USED TO TRAP SEDIMENT.
 2. WHEN NECESSARY, WHEELS SHALL BE CLEANED PRIOR TO ENTRANCE ONTO PUBLIC RIGHT-OF-WAY.
 3. WHEN WASHING IS REQUIRED, IT SHALL BE DONE ON AN AREA STABILIZED WITH CRUSHED STONE THAT DRAINS INTO AN APPROVED SEDIMENT TRAP OR SEDIMENT BASIN, AS SHOWN ABOVE.
 4. DRIVE ENTRANCES ONTO RESIDENTIAL LOTS WILL NOT BE REQUIRED TO HAVE THE SEDIMENT BARRIER SHOWN, BUT WHEEL WASHING MAY BE REQUIRED IF STABILIZED ENTRANCE IS NOT SUFFICIENT TO KEEP MUD FROM BEING TRACKED ONTO ADJACENT STREET. ENTRANCE SHALL EXTEND FROM BACK OF CURB TO DWELLING.

Water Quality Measures

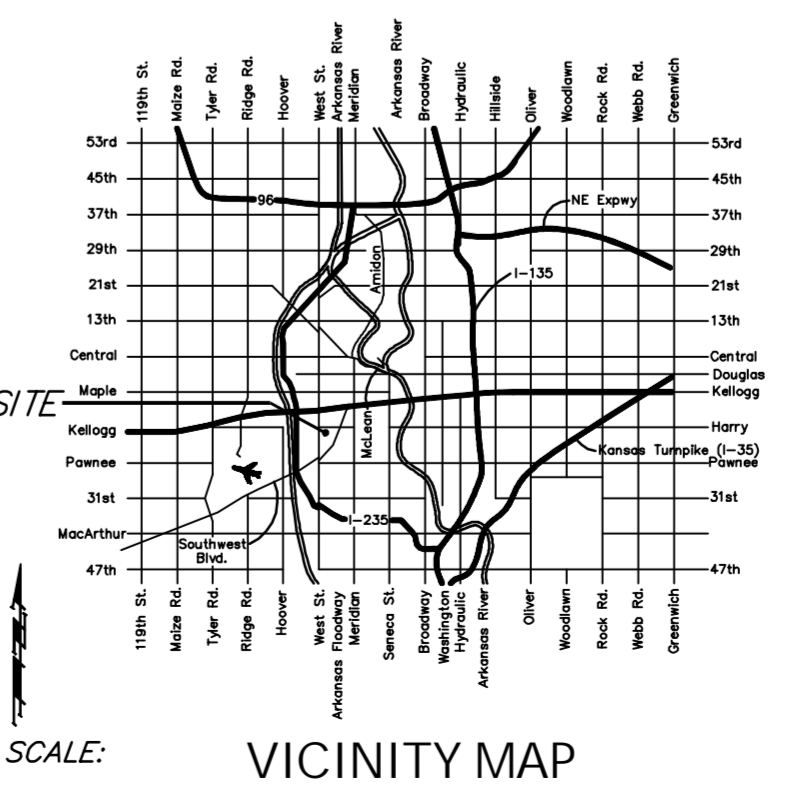
Water quality measures have been calculated per the City of Wichita / Sedgwick County Storm Manual.

Water Quality requirements are to be accomplished with a Hydroworks HG6 Water Quality Structure located on site. This structure are the responsibility of the owner for all maintenance and records. A portion of the site improvements are draining directly to an existing inlets.

Area Draining to HG6 unit:
Existing Impervious: 44,260 sq. ft.
New Imp. Area: 23,370 sq. ft.
Future Imp. Area: 150,750 sq. ft.
Total Drain area: 218,380 sq. ft.

An HG6 Water Quality Unit with a Sump Depth of 6"8" will be adequate to treat the current and future Water Quality Volume.

A portion of this site improvement, 29,400 new imperv. & 31,160 of ex. imperv. will be drain to existing area inlets. This is acceptable to the Stormwater Manual, because a large area of existing pavement will be treated with the HG6 unit.



BENCHMARK

Benchmark 97: Cross, along east edge of pavement.
Elev. = 1298.99 (NAVD88)
Benchmark 98: Cross, north side of railroad headwall.
Elev. = 1300.32 (NAVD88)
Benchmark 99: Cross, NE corner of Area Inlet.
Elev. = 1299.68 (NAVD88)

LEGAL DESCRIPTION

Part of Lot 1, Goebel Brothers Fourth Addition, Wichita, Sedgwick County, Kansas.

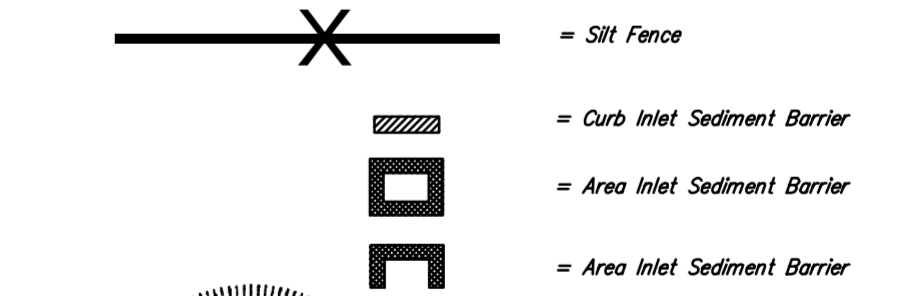
SITE ERU INFORMATION

Total Area:	±1,033,390sq. ft. (23.72 acres)
Ex. Conditions:	
Impervious Area:	±491,950 sq. ft. (11.29acres)
Building Area:	±261,360 sq. ft. (6.00acres)
Total Impervious:	±753,310 sq. ft. (17.29acres)
Improvements:	
Reconst. Impervious:	±40,790 sq. ft. (0.94acres)
Added Pavement/gravel:	±28,770 sq. ft. (0.79acres)
Building Area:	±24,000 sq. ft. (0.55acres)
Added Impervious:	±52,770 sq. ft. (1.35acres)
Regraded Pervious:	±85,680 sq. ft. (1.97acres)
Net Area Disturbed:	±179,240 sq. ft. (4.11acres)
Net Post Conditions:	
Impervious Area:	±520,720 sq. ft. (11.95acres)
Building Area:	±285,360 sq. ft. (6.55acres)
Total Impervious	±806,080 sq. ft. (18.51acres)

EROSION CONTROL NOTES

1. No land clearing or grading shall begin until all applicable erosion control measures have been installed. This project is subject to this SWPP Plan. The Contractor shall comply with any unusual requirements as necessary for the site to be in compliance during construction, per this plan and City specs (See #11).
2. All exposed areas shall be seeded as specified within 21 days of final GRADING. Seed is to include straw mulch, crimped in place in areas with slope in excess of 5%.
3. Should construction stop for longer than 14 days, the site shall be seeded as specified.
4. Seeding areas shall be prepared for planting per industry standards (i.e., soil shall be prepared before planting with proper equipment, debris removed, etc.) Installation of Seeding, Fertilizer & Mulch shall be installed per Section 900 of City of Wichita Standard Specifications for Construction.
5. Maintain erosion control measures after each rain and at least once a week.
6. This plan shall not be considered all inclusive as the contractor shall take all necessary precautions to prevent soil sediment from leaving the site.
7. Contractor shall comply with all state and local ordinances that apply.
8. Additional erosion and sediment control measures will be installed if deemed necessary by on site inspection.
9. Land disturbing activities shall not commence until approval to do so has been received by governing authorities.
10. If installation of storm drainage system should be interrupted by weather or nightfall, the pipe ends shall be covered with filter fabric.
11. See Landscape Plan for ground treatments in all disturbed areas beyond impervious surfaces.
12. This SWPP Plan should be in job trailer and/or on site at all times. The Contractor is responsible for any needed changes, updates or maintenance to BMP's on site. This plan may change and updates need to be recorded and documented on the plan. This plan is a flexible plan, due to changing site conditions and weather. Please inform Landscape Architect and/or Engineer of changes to plan.
13. ANY substitutions for the sediment control devices shown, must be approved by the Landscape Architect and/or Engineer prior to any uses on site.
14. An NPDES Permit Application has been submitted for this property. A copy of this application must be kept at the job site for the duration of the construction process.

EROSION CONTROL LEGEND



Baughman Engineering, P.A.
315 Ellis St., Wichita, KS 67211 P 316-262-7271 F 316-262-0149
ENGINEERING | SURVEYING | PLANNING | LANDSCAPE ARCHITECTURE

PROJECT NUMBER: 183
DESIGN: psb
DRAWN: psb
APPROVED: DATE: 12/13
SCALE: VARIES
SHEET: 3 OF 3

Goebel Bros. 4TH Addition (3505 McCormick)
REF ERU PLAN
Storm Water Drain Improvements

Baughman Company, P.A.
 315 Ellis St., Wichita, KS 67211 P 316-262-7271 F 316-262-0149
 ENGINEERING | SURVEYING | PLANNING | LANDSCAPE ARCHITECTURE
 Baughman
 Goebel Bros. 4TH Addition (3505 McCormick)
REF ERU PLAN
 Storm Water Drain Improvements

BENCHMARK

Benchmark 97: Cross, along east edge of pavement.
Elev. = 1298.99 (NAVD88)
Benchmark 98: Cross, north side of railroad headwall.
Elev. = 1300.32 (NAVD88)
Benchmark 99: Cross, NE corner of Area Inlet.
Elev. = 1299.68 (NAVD88)

LEGAL DESCRIPTION

Part of Lot 1, Goebel Brothers Fourth Addition, Wichita, Sedgwick County, Kansas.

SITE INFORMATION

Total Area:	±1,033,390 sq. ft. (23.72 acres)
Ex. Conditions:	
Impervious Area:	±491,950 sq. ft. (11.29 acres)
Building Area:	±261,360 sq. ft. (6.00 acres)
Total Impervious:	±753,310 sq. ft. (17.29 acres)
Improvements:	
Reconst. Impervious:	±40,790 sq. ft. (0.94 acres)
Added Pavement/gravel:	±28,770 sq. ft. (0.79 acres)
Building Area:	±24,000 sq. ft. (0.55 acres)
Added Impervious:	±52,770 sq. ft. (1.35 acres)
Regraded Pervious:	±85,660 sq. ft. (1.97 acres)
Net Area Disturbed:	±179,240 sq. ft. (4.11 acres)
Net Post Conditions:	
Impervious Area:	±520,720 sq. ft. (11.95 acres)
Building Area:	±285,360 sq. ft. (6.55 acres)
Total Impervious:	±806,080 sq. ft. (18.51 acres)

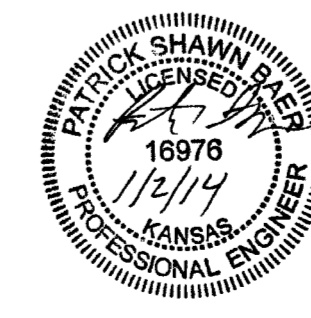
GRADING NOTES

- Contractor shall be required to provide notice to Kansas One Call at 687-2470 a minimum of two (2) working days prior to any excavation or work adjacent to utilities.
- The Contractor must notify the following in case of an emergency:
 - Kansas Gas Service (Gas).....1-888-482-4950
 - Black Hills Energy (Gas).....1-800-303-0357
 - Wester Energy (Electric).....303-8650
 - Cox Communications (Telecommunication).....282-4270
 - AT&T (Telecommunication).....288-2759
 - City of Wichita Water Dept. (Water).....268-4563 or 268-4908
 - City of Wichita Sewer Maint.(San. Sewer).....268-4024 or 262-6000
 - City of Wichita Storm Sewer Maint. (Storm Sewer).....268-4090
 - City of Wichita Traffic Maint.(Trat. Control).....268-4034 or 268-4203
 - Conoco Pipeline Co. (Petroleum).....1-800-231-2551
 - Williams Pipeline Co. (Petroleum).....529-6600 or 1-800-324-9696
 - Phillips Pipeline Co. (Petroleum).....1-800-766-8230
- Existing utilities and their locations, as shown on the plans, represent the best information obtainable for design. Location information has been obtained from the various utility companies and is either from company record drawings or company provided field locations. The Contractor will be required to work around existing utilities which do not conflict with proposed construction.
- Traffic affected by the construction on this project shall be handled in accordance with the latest edition of the Local Manual on Uniform Traffic Control Devices.
- The Contractor shall verify all utility locations prior to construction of this project.
- Refer to Landscape Plan for Treatment of All Disturbed Areas.
- Signing and striping shall be installed in accordance with Local City Specifications and Codes. Striping shall be painted markings in conformance with the latest edition of the Standard Specifications for State Road and Bridge Construction by the Kansas Department of Transportation.
- Paved Lot to be constructed with Paving as shown. Subgrade to be compacted to 98% Standard Proctor Density and treated with 4 to 6 percent lime or 14 to 16 percent class "C" fly ash. Refer to pavement details to verify depths and Paving type.
- Proposed storm water sewer shall be the contractor's responsibility. This portion of the project shall be constructed under "Private Project." The storm sewer system shall be designed separately, and undergo Local City review and approval. The installation of the storm sewer is required to be done by a bonded contractor, inspected and certified. Refer to Separate Sewer and Storm Water Sewer Plan Set. The Contractor shall construct the sewer only from Local City approved plans which will be provided to the General Contractor or can be provided by

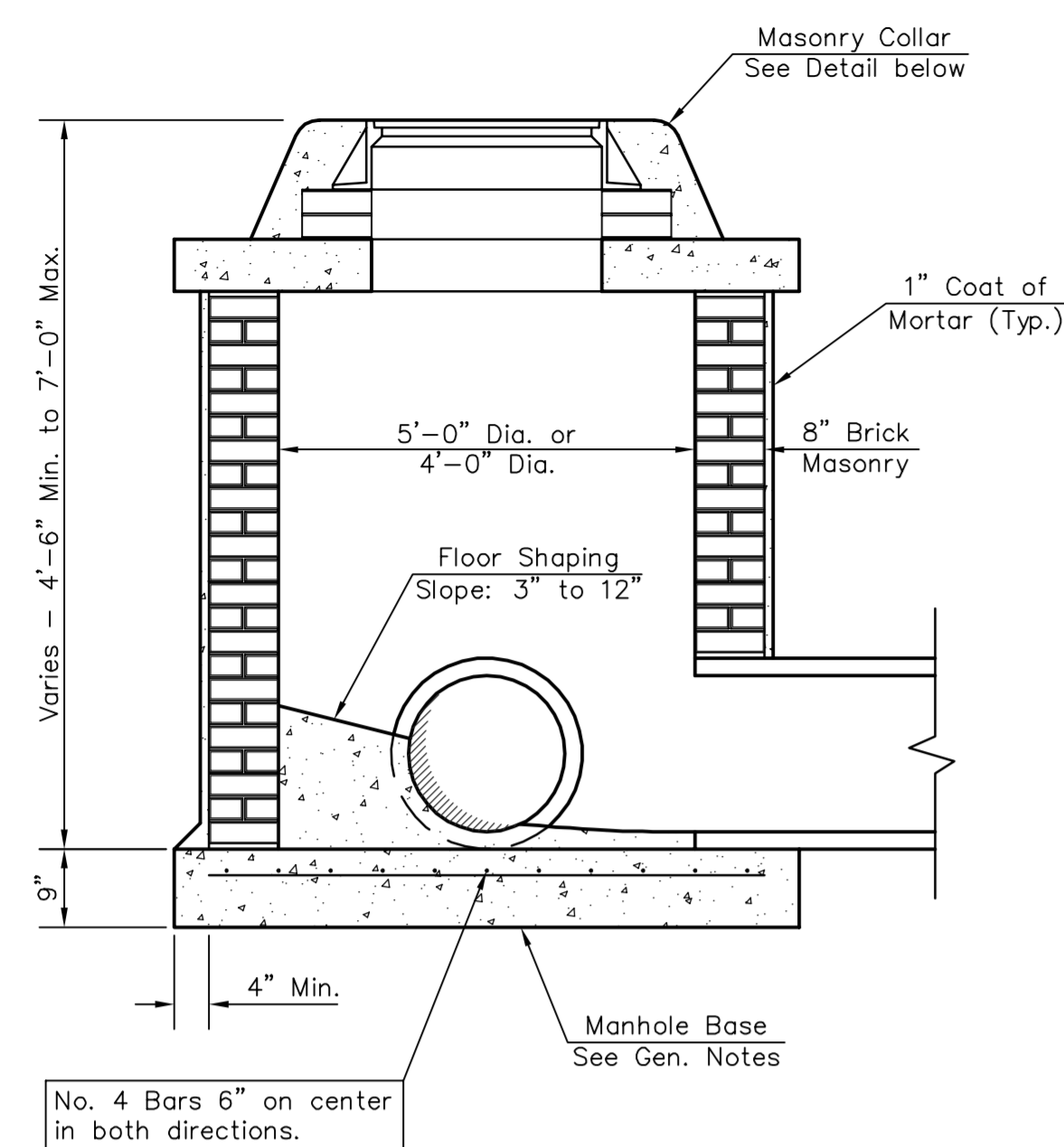
- Baughman Company, P.A.
- The Contractor shall notify adjacent landowners prior to proceeding with any construction work on landowner's property.
- Cross-Slopes on sidewalks around building shall not exceed 1/4" per foot (or 2%). Notify Landscape Architect of any discrepancies prior to forming of walks.

GRADING PLAN
Scale 1" = 20'-0"

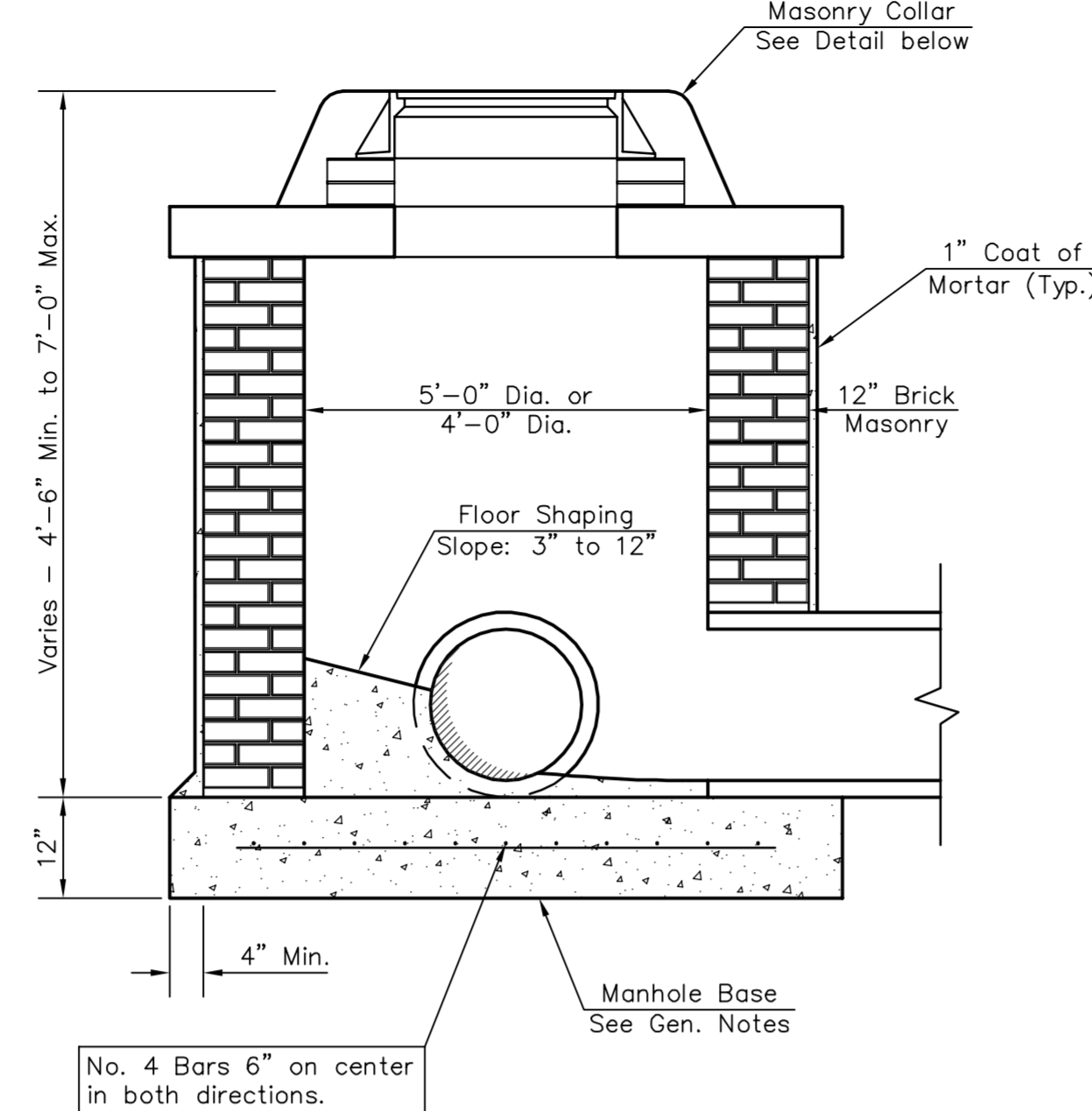
**FOR REFERENCE ONLY
SEE APPROVED FINAL SITE
PLANS FOR CONSTRUCTION**



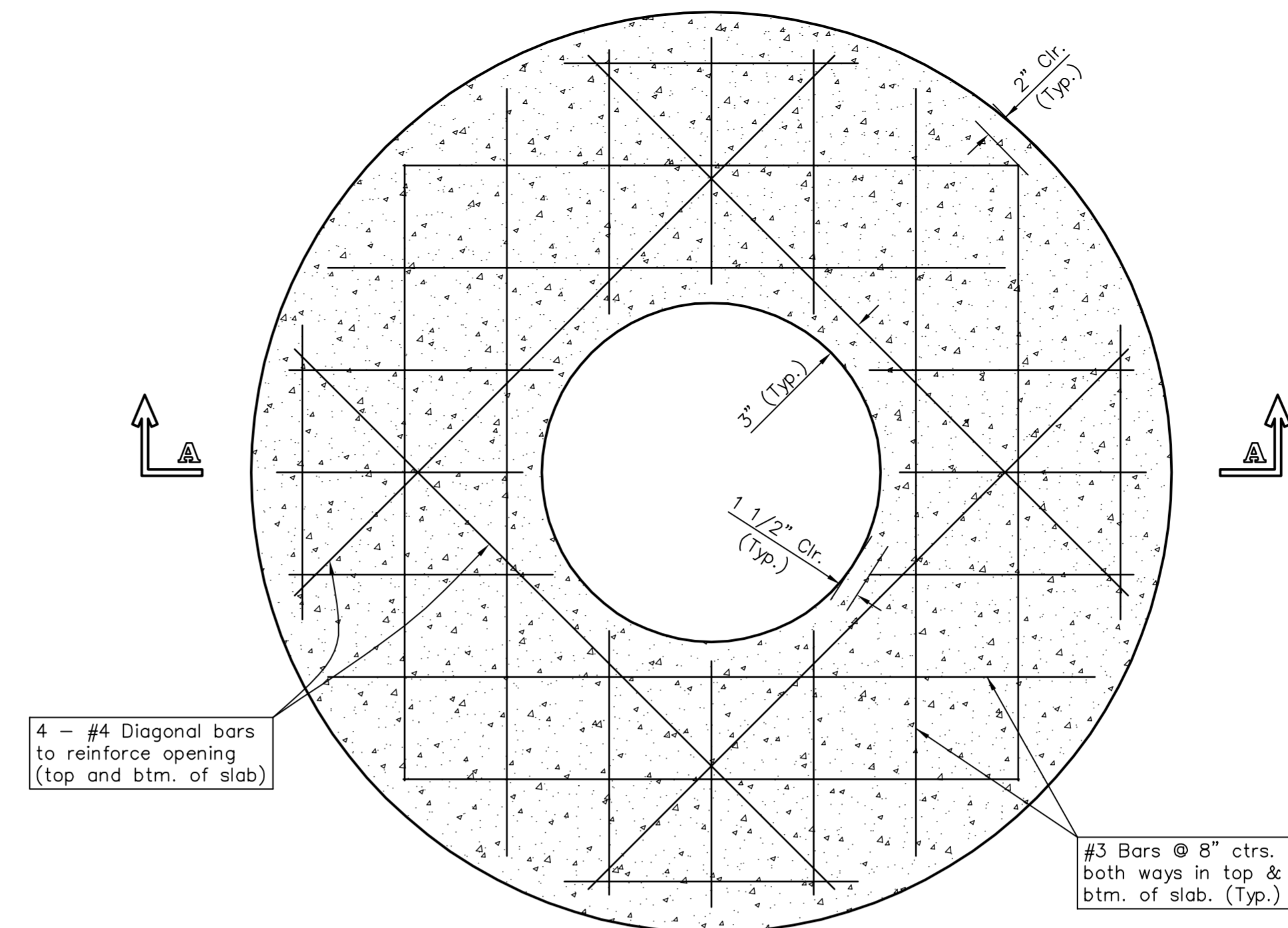
		Part of Lot 1, Goebel Bros. 4th Add. Grading Plan 3505 W McCormick Ave.	
Baughman Company, P.A. 315 Ellis St. Wichita, KS 67211 P:316-262-7271 F:316-262-0149 ENGINEERING SURVEYING PLANNING LANDSCAPE ARCHITECTURE			
PROJECT NUMBER	psb	DESIGN	DRAWN
REVISIONS	1814 psb	APPROVED	DATE
1	revised concrete grades west of building		1/14
SCALE	Varies	SHEET	2 OF 3
E:\Projects\Star Lumber Yard BLDG (13-11-E986)\Star PPD.dwg 13-11-E986			



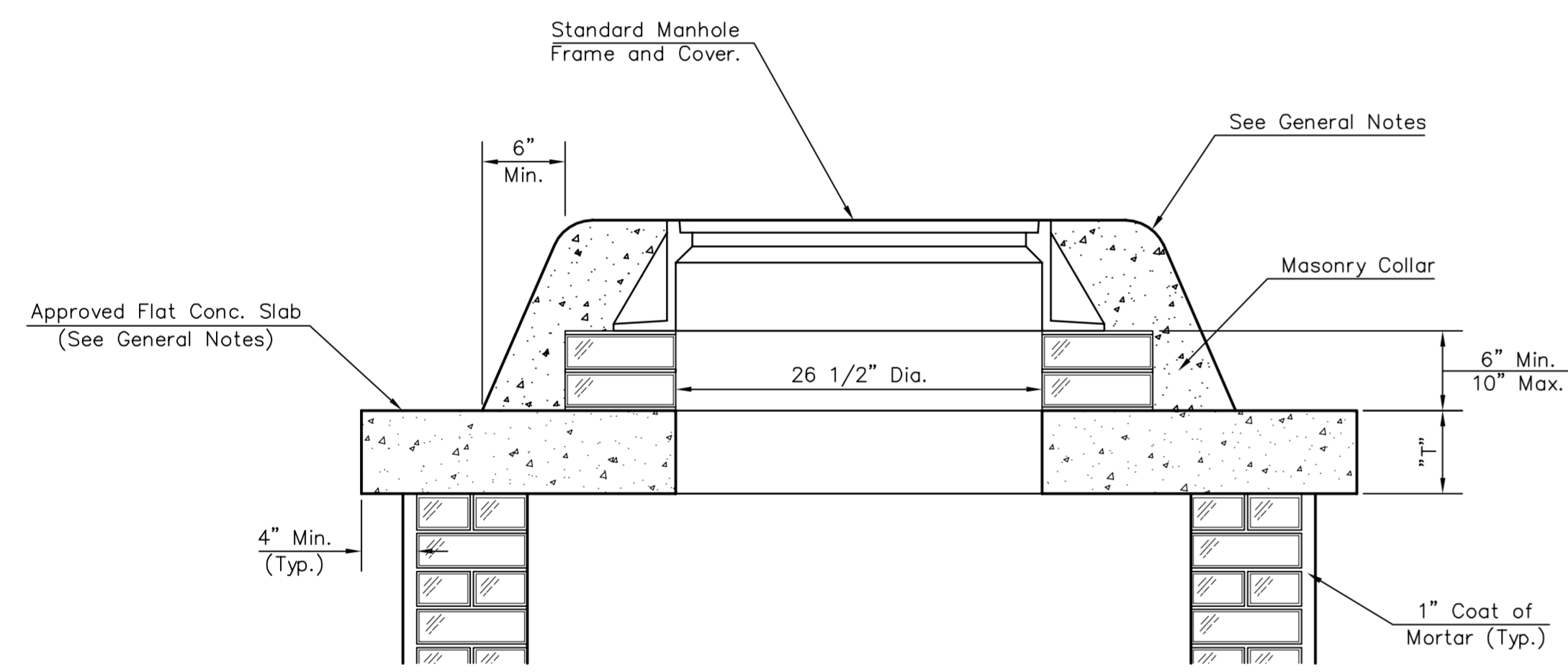
SHALLOW TYPE "A" MANHOLE



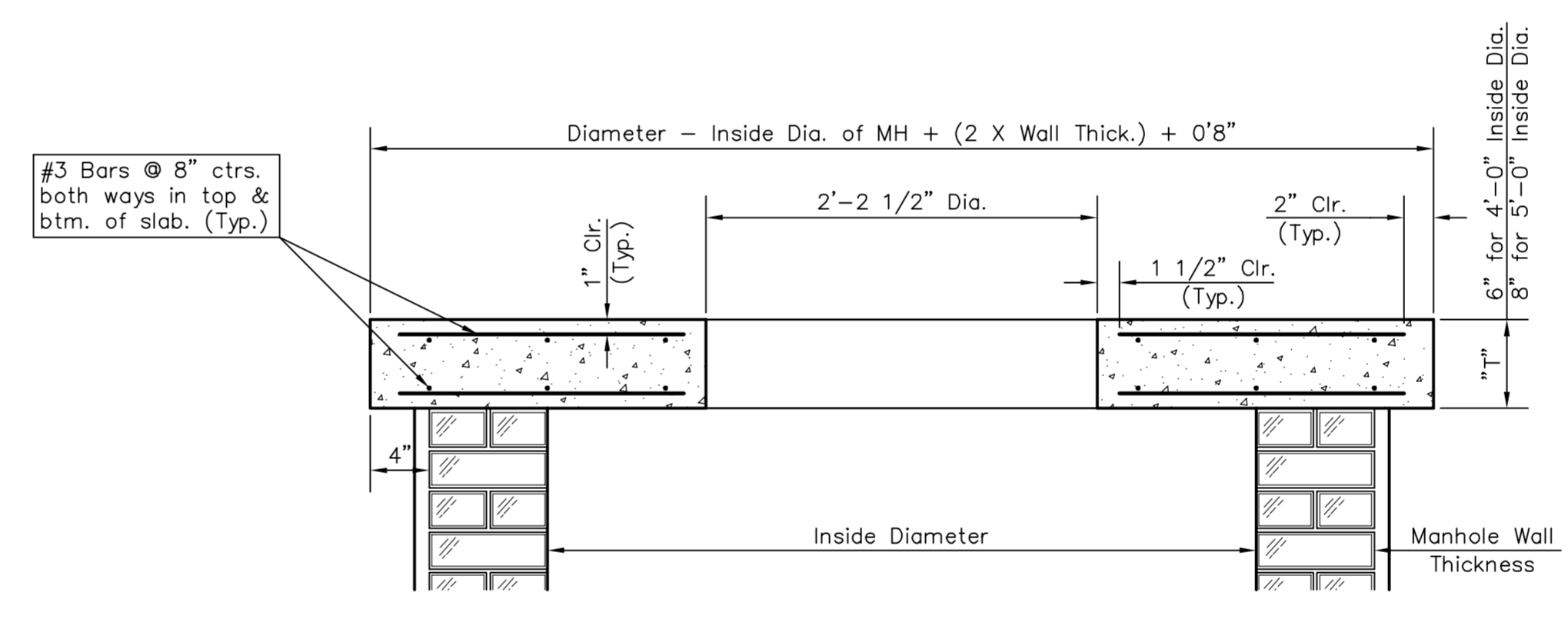
SHALLOW TYPE "B" MANHOLE



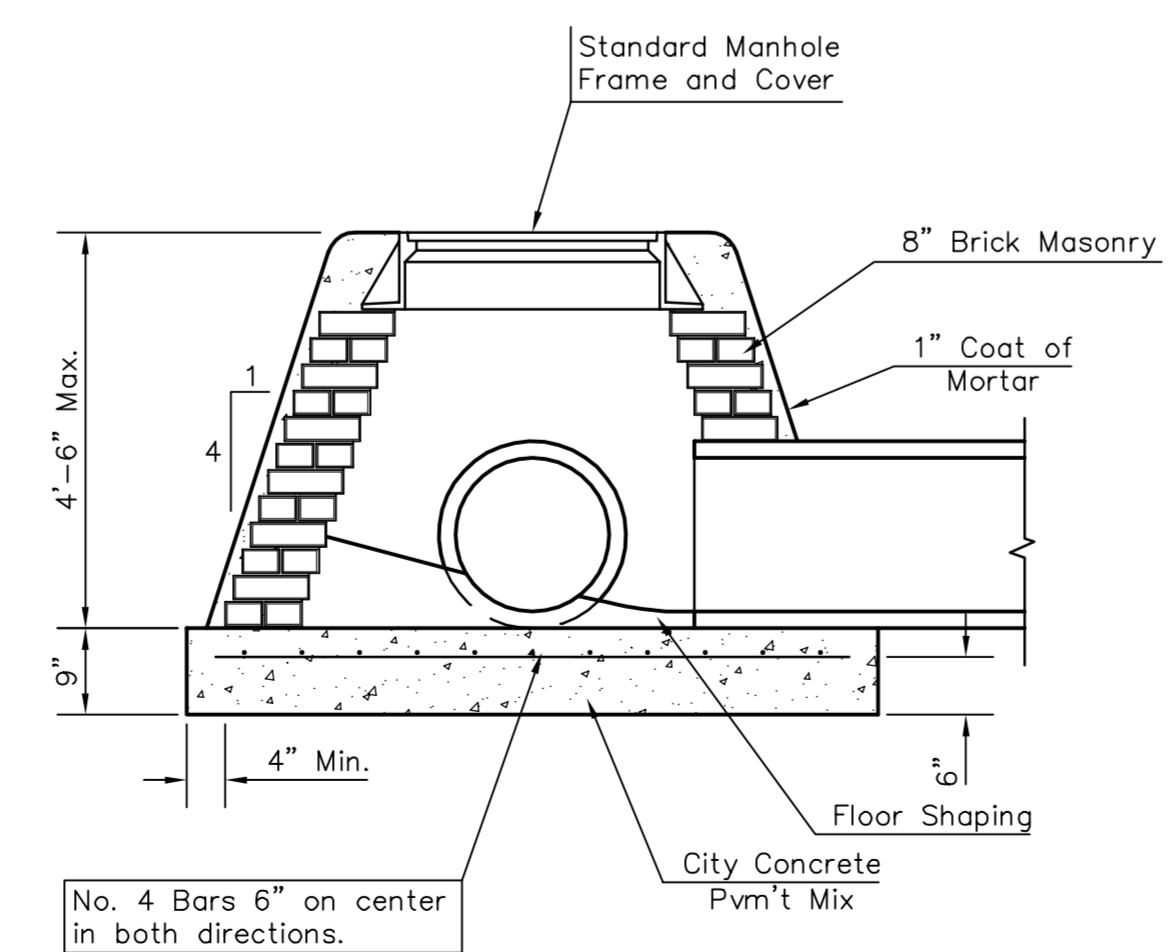
PLAN



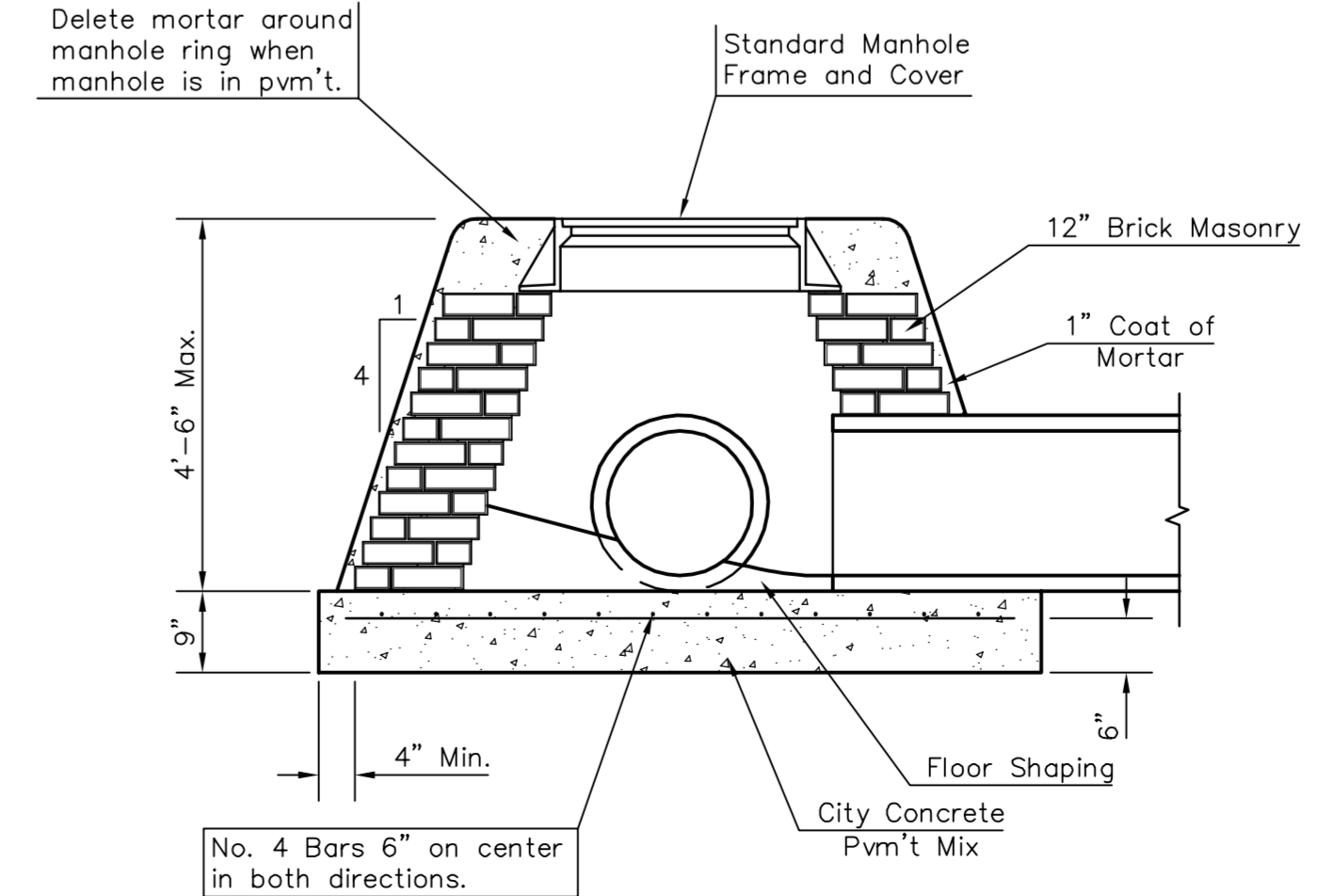
MASONRY COLLAR DETAIL



SECTION A-A
FLAT CONCRETE SLAB DETAILS



SPECIAL SHALLOW TYPE "A" MANHOLE



SPECIAL SHALLOW TYPE "B" MANHOLE

GENERAL NOTES

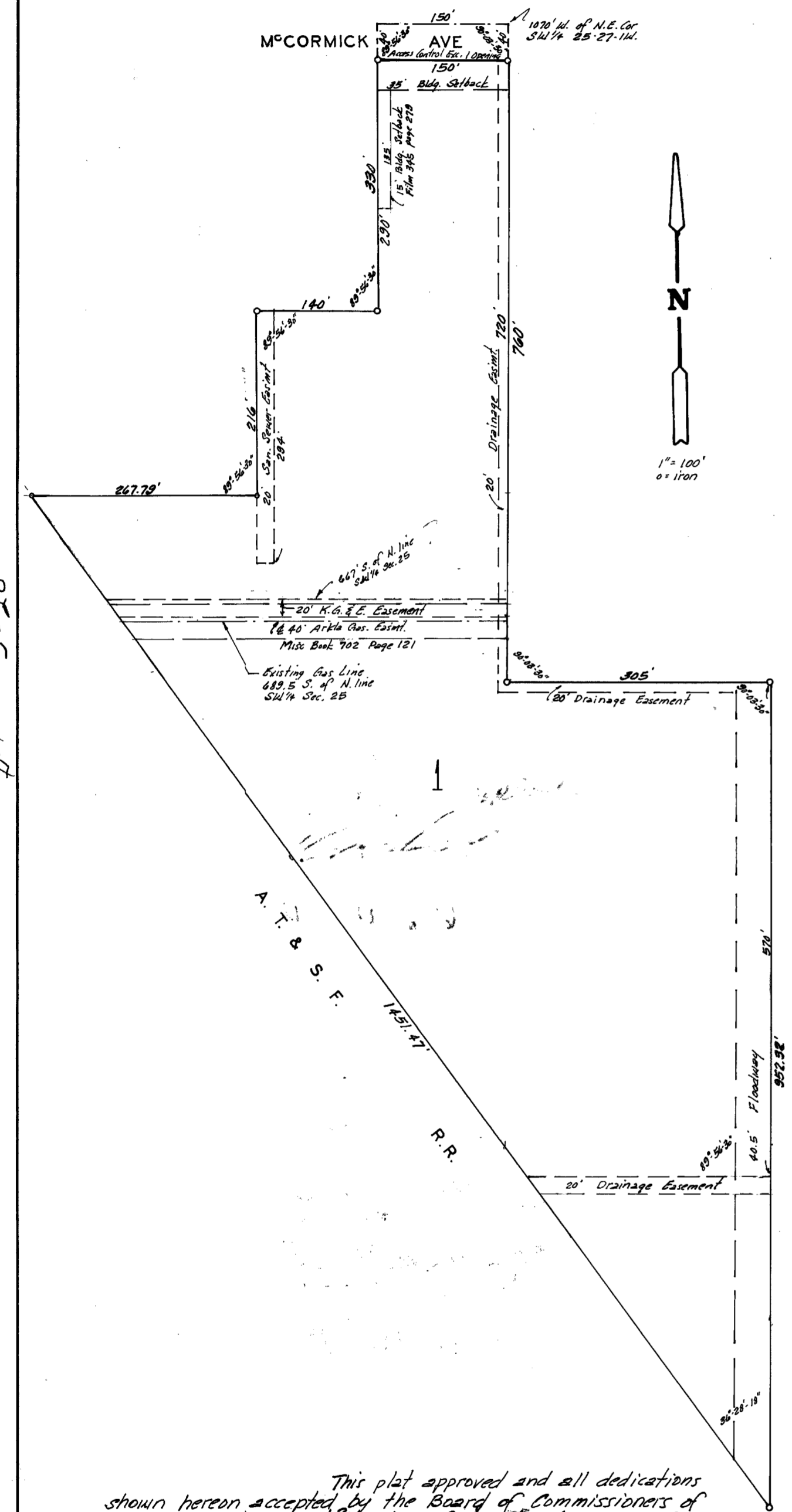
- Mortar used in masonry construction shall contain 8 sacks of cement per cubic yard. Concrete used in manhole bases shall conform to the requirements of concrete for concrete pavement construction as specified in the city standard paving specifications using city concrete cement mix without air entraining admixture. Mortar shall be placed around the manhole ring as shown on the drawings when manholes are constructed in unpaved areas. Type "A" shallow manholes can be used on sewers when the manhole is not located within public street pavement. Manholes constructed where pipe sizes are smaller than 24" shall have an inside diameter of 4". Manholes constructed where pipe sizes are 24" or larger shall have an inside diameter of 5". Completed manhole shall be without leaks and water tight.
- Reinforcing steel shall be installed in the manhole bases and shall consist of no. 4 bars placed on 6" centers in both directions. The manhole base reinforcement shall be placed 6" above the bottom of the manhole base. All costs for furnishing and installing reinforcing steel shall be included in the unit price bid for the manhole.
- The floors of all manholes shall be shaped with flow channels such that the manholes will be self cleaning and free of areas where solids could be deposited as sewage flows through the manhole from all inlet pipes to the outlet pipe. Flow channels shall be formed to match the bottom halves of the inflowing pipes and the outflowing pipe as shown by the drawings. Manhole floors shall have slopes of 3 inches per foot in the areas outside of the flow channels sloped toward the flow channels. Pipes laid through manholes shall have the top half removed to neat lines for the full inside diameter of the manhole. Manhole floors shall then be shaped around the bottom half of the pipe which forms the flow channel.
- Pipes installed within the excavation made for the manhole shall be cradled with concrete to the limits of the manhole excavation. When clay pipe is used, the cradle shall extend to the first joint outside the manhole. The cradle shall be terminated at the clay pipe joint in a manner which will maintain the flexibility of the joint. Cost of cradle within manhole excavation or to clay pipe joints adjacent to manhole shall be included in the unit price bid for the manhole.
- Manhole cover castings and manhole frame castings shall conform to the requirements as indicated in the standard specifications and as shown in the standard detail drawings.
- The crowns of inflowing pipes shall never be set lower than the crown of the outflowing pipe.
- Standard shallow manholes type "A" and "B" shall be paid for at the unit price bid per each for the type and diameter indicated. Standard special shallow manholes type "A" and "B" shall be paid for at the unit price bid per each for the type indicated. All standard shallow manhole diameters will be 4' unless indicated otherwise.
- All brick used in manhole construction shall meet Grade SW of ASTM C652 or C62-87.



		CITY OF WICHITA, KANSAS	
		Std. Manhole Detail TYPE "A" AND TYPE "B"	
<small>Baughman Company, P.A. 315 Ellis St. Wichita, KS 67211 P 316-262-7271 F 316-262-0149 ENGINEERING SURVEYING PLANNING LANDSCAPE ARCHITECTURE</small>		DESIGN C.O.W.	DRAWN STAFF
PROJECT NUMBER		APPROVED	DATE
REVISIONS:		SCALE NONE	SHEET 01/06
		6 OF 7	

GOEBEL BROS. ADDITION

WICHITA, KANSAS.



State of Kansas } S.S. We, Wm. J. Goebel, Robert L. Goebel, and Michael G. Goebel, Surveyors in aforesaid county and state do hereby certify that we have surveyed and platted "GOEBEL BROS. ADDITION" Wichita, Kansas, and that the accompanying plat is a true and correct exhibit of the property surveyed, described as and being a replat of part of Lot 1, Parkway 2nd Addition to Wichita, Kansas, and a tract in the SW 1/4 of Sec. 25, Twp. 27-S, R. 1-W, described as follows: Beginning at a point 1070 feet west of the N.E. Corner of the SW 1/4 of said Sec. 25; thence west along the north line of said SW 1/4, 150 feet; thence south parallel with the east line of said SW 1/4, 380 feet; thence west parallel with the north line of said SW 1/4, 140 feet to the east line of said Parkway 2nd Addition; thence south parallel with the east line of said SW 1/4 and the east line of said Addition, 210 feet; thence west parallel with the north line of said SW 1/4, 267.79 feet to the westerly line of said Addition and the easterly right-of-way line of the A.T. & S.F. Railroad; thence south-easterly along said Railroad right-of-way, 1451.47 feet to a point 76.6 feet west of the east line of said SW 1/4; thence north parallel with the east line of said SW 1/4, 952.32 feet to a point 760 feet south of the north line of said SW 1/4; thence west parallel with the north line of said SW 1/4, 305 feet; thence north 760 feet to the point of beginning.

2/28/79
 646
 BAHGHEIM COMPANY P.A.
 WILLIAM J. GOEBEL
 SURVEYOR

Know all men by these presents that we, the undersigned, have caused the land described in the surveyors certificate to be platted into a lot and street to be known as "GOEBEL BROS. ADDITION" Wichita, Kansas. The street is hereby dedicated to and for the use of the public. Easements are hereby granted as indicated for the construction and maintenance of all public utilities and drainage. The floodway shall be the responsibility of the owner of the property until such time as the governing body exercising jurisdiction elects to assume responsibility for maintenance and improvement of the drainage, provided further that no building shall be constructed on or within said floodway, nor shall any fill, change of grade, creation of channel, or other work be carried on without the permission of the Wichita Sedgwick County Flood Control Office or their successors in office. All abutters rights of access to or from McCormick Ave. over and across the north line of Lot 1, are hereby granted to the City of Wichita, provided however that said lot shall have access at one point as shall be approved by the City Engineer.

Star Lumber and Supply Company, a Partnership
 WILLIAM J. GOEBEL
 ROBERT L. GOEBEL
 MICHAEL G. GOEBEL

State of Kansas } S.S. The foregoing instrument was acknowledged before me this 20th day of August, 1979, by William J. Goebel, Robert L. Goebel, and Michael G. Goebel, of Star Lumber and Supply Company, a Partnership.
 My Commission Expires: 4/14/80

This plat of "GOEBEL BROS. ADDITION" Wichita, Kansas, has been submitted to and approved by the Wichita-Sedgwick County Metropolitan Area Planning Commission, Wichita, Kansas. Dated this 7th day of August, 1979, Wichita-Sedgwick County Metropolitan Area Planning Commission.

Jerry Greider Chairman
 Robert A. Gaudin Secretary

This plat approved and all dedications shown hereon accepted by the Board of Commissioners of the City of Wichita, Kansas, this 11th day of SEPTEMBER, 1979.

Tony Losado
 Mayor

Entered on transfer records 13 day of Sept.

This plat approved and all dedications shown hereon accepted by the Board of Commissioners of Sedgwick County, this 13th day of September, 1979.
 Chairman
 Commissioner
 Commissioner
 County Clerk

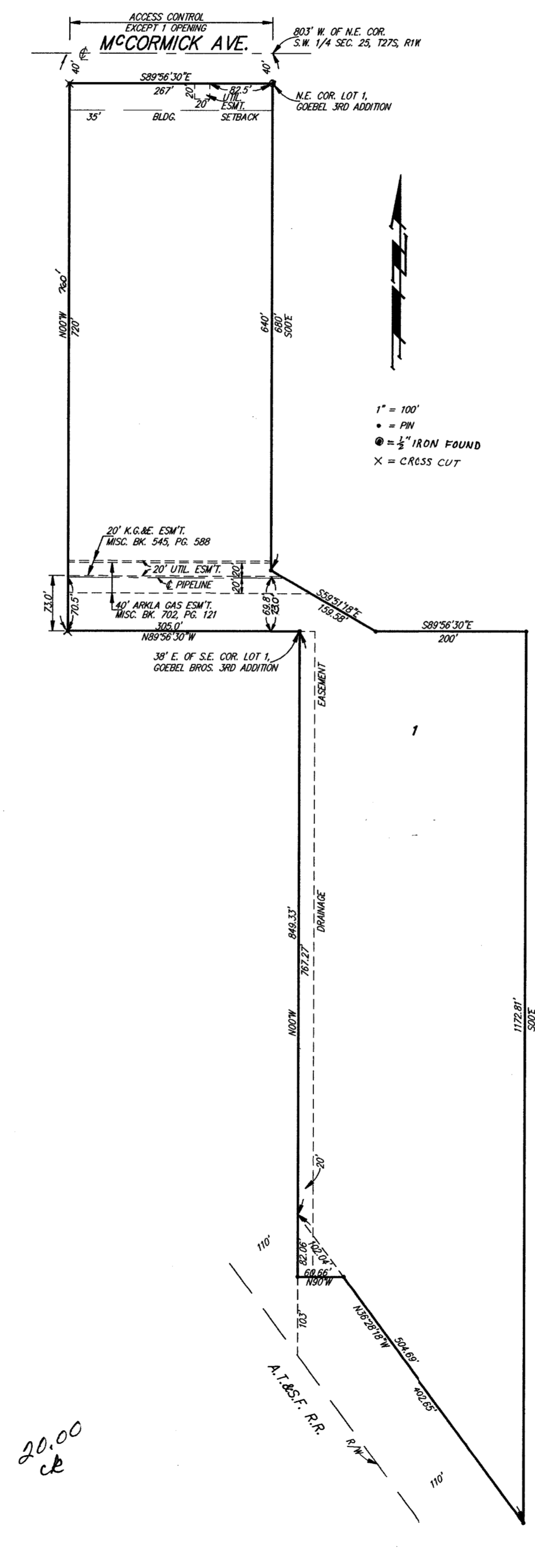
State of Kansas } S.S. This is to certify that this plat was filed for record in the office of the Register of Deeds this 14th day of SEPTEMBER, 1979, at 8:30 o'clock A.M. and is duly recorded.

Pat Kettler
 Register of Deeds
 Deputy

PC 33-8

GOEBEL BROS. 4TH ADDITION

WICHITA, SEDGWICK COUNTY, KANSAS



State of Kansas } S.S. We, Baughman Company, P.A., Surveyors in aforesaid county and state do hereby certify that we have surveyed and platted "GOEBEL BROS. 4TH ADDITION", Wichita, Sedgwick County, Kansas, and that the accompanying plat is a true and correct exhibit of the property surveyed, described as and being a replat of Lot 1, Goebel Bros. 3rd Addition, Wichita, Sedgwick County, Kansas, together with a tract in the SW 1/4 of Sec. 25, Twp. 27-S, R. 1-W of the 6th P.M., Sedgwick County, Kansas, described as commencing at the N.E. Cor. of said SW 1/4, thence west along the north line of said SW 1/4, 803 feet; thence south parallel with the east line of said SW 1/4, 680 feet for a place of beginning; thence southeasterly, 159.58 feet to a point 760 feet south of the north line of said SW 1/4, said point being on the south line of Lot 1, Goebel Bros. 3rd Addition, Wichita, Sedgwick County, Kansas, as extended east and 138 feet east of the S.E. Cor. of said Lot 1; thence east parallel with the north line of said SW 1/4, 200 feet; thence south parallel with the east line of said SW 1/4, 1172.81 feet more or less to a point on a line 110 feet northeasterly from and measured at right angles to the north-easterly right-of-way line of the A.T. and S.F. Railroad; thence north-westerly parallel to said Railroad right-of-way, 504.69 feet more or less to the east line of Lot 1, Goebel Bros. Addition, Wichita, Sedgwick County, Kansas; thence north along the east line of said Lot, 767.27 feet more or less to the N.E. Cor. thereof; thence west along the north line of said Lot, 39 feet to the S.E. Cor. of Lot 1, in said Goebel Bros. 3rd Addition, Wichita, Sedgwick County, Kansas; thence north 80 feet to the place of beginning; together with a tract in the SW 1/4 of Sec. 25, Twp. 27-S, R. 1-W of the 6th P.M., Sedgwick County, Kansas, described as commencing at the southernmost corner of Lot 1, Goebel Bros. Addition, Wichita, Sedgwick County, Kansas; thence north along the east line of said Lot 1, 103 feet for a place of beginning; thence north along the east line of said Lot 1, 82.06 feet to a point 110 feet northeasterly of the northeasterly line of the A.T. and S.F. Railroad Right-of-Way as measured perpendicularly from said northeasterly line; thence southeasterly along a line lying parallel to and 110 feet northeasterly of the northeasterly line of said Railroad a distance of 102.04 feet; thence west 60.66 feet to the place of beginning.

Existing public easements and dedications being vacated by virtue of KSA 12-512(b).
 Baughman Company, P.A.
 Date 11-16-92
 Gregory F. Savaris
 Surveyor

Gregory F. Savaris
 Surveyor

Know all men by these presents that we, the undersigned, have caused the land described in the surveyors certificate to be platted into a lot to be known as "GOEBEL BROS. 4TH ADDITION", Wichita, Sedgwick County, Kansas. All abutters rights of access to or from McCormick Ave. over and across the north line of Lot 1 are hereby granted to the City of Wichita, provided however that Lot 1 shall have access to McCormick Ave. at one point as shall be determined by the City Engineer of the City of Wichita, Kansas. The utility easement is hereby granted as indicated for the construction and maintenance of all public utilities.

Star Lumber and Supply Company, a Partnership
 Michael G. Goebel
 Partner

Star Lumber and Supply Company, Inc.
 Christopher J. Goebel
 President

State of Kansas } S.S. The foregoing instrument acknowledged before me, this 16th day of November, 1992, by Michael G. Goebel, a partner of Star Lumber and Supply Company, on behalf of the partnership.

My App't. Exp. 2-3-95
 Notary Public

This plat of "GOEBEL BROS. 4TH ADDITION", Wichita, Sedgwick County, Kansas, has been submitted to and approved by the Wichita-Sedgwick County Metropolitan Area Planning Commission, Wichita, Kansas. Dated this 5th day of November, 1992, Wichita-Sedgwick County Metropolitan Area Planning Commission.

Chairman
 Secretary
 Marvin S. Krout

This plat approved and all dedications shown hereon accepted by the City Council of the City of Wichita, Kansas, this 15th day of December, 1992.

Mayor
 Deputy City Clerk
 Pat Burnett

Entered on transfer record this 30 day of December, 1992.

County Clerk
 Don Wright

State of Kansas } S.S. This is to certify that this plat has been filed for record in the office of the Register of Deeds, this 20th day of DECEMBER, 1992, at 1:30 o'clock P.M. and is duly recorded.

Pat Kettler
 Register of Deeds

Phyllis Hernandez
 Deputy

State of Kansas } S.S. The foregoing instrument acknowledged before me, this 16th day of November, 1992, by Christopher J. Goebel, President of Star Lumber and Supply Company, Inc., on behalf of the corporation.

My App't. Exp. 2-3-95
 Notary Public

B-1 3-20

D-1 3-20

D-1

PC 33-8

Baughman Company, P.A.
 Baughman

Goebel Bros. 4TH Addition (3505 McCormick)
 Plat Ref
 Storm Water Drain Improvements

7
 7