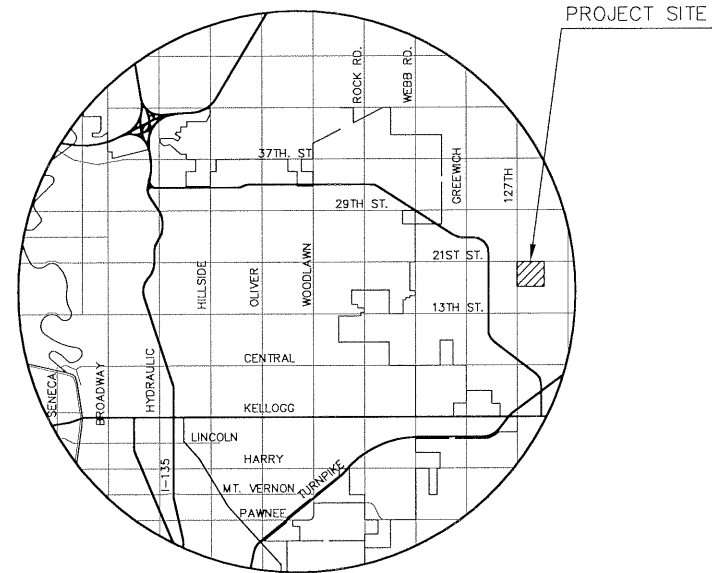


STORM WATER SEWER PLANS FOR
STORM WATER SEWER #592
 IN
REED'S COVE ADDITION - PHASE 2

AN ADDITION TO THE CITY OF WICHITA
 SEDGWICK COUNTY, KANSAS
PROJECT NO. 468-83571

NEIL D. CABLE, CITY ENGINEER

OCA 751346



GENERAL NOTES

1. THE TOPS OF INLETS AND MANHOLES AS NOTED ON THE PLANS MAY VARY SO AS TO MEET PROPOSED TOP OF CURB ELEVATIONS OR PAVEMENT ELEVATIONS. THE FIELD ENGINEER SHALL LOCATE INLETS AND MANHOLES WITH REFERENCE TO PROPOSED PAVING PLANS OF THE PERTINENT STREETS.
2. ALL CONCRETE SHALL BE STANDARD PAVING MIX UNLESS OTHERWISE NOTED.
3. THE CONTRACTOR SHALL BE RESPONSIBLE FOR PRESERVING PROPERTY IRONS. THE CONTRACTOR SHALL BE REQUIRED TO RE-ESTABLISH ANY PROPERTY IRONS WHICH ARE DAMAGED OR DESTROYED BY HIS CONSTRUCTION OPERATIONS. SUCH IRONS SHALL BE RE-ESTABLISHED BY A LICENSED LAND SURVEYOR IN ACCORDANCE WITH STATE LAWS.
4. TREES TO BE REMOVED ARE MARKED ALL TREES WHICH IN THE OPINION OF THE FIELD ENGINEER CAN BE SAVED, SHALL BE SAVED.
5. CONTRACTOR SHALL NOTIFY UTILITY COMPANIES OF CONSTRUCTION SCHEDULING.
6. EXISTING UTILITIES AND THEIR LOCATIONS, AS SHOWN ON THE PLANS REPRESENT THE BEST INFORMATION OBTAINABLE FOR DESIGN. LOCATION INFORMATION HAS BEEN OBTAINED FROM THE VARIOUS COMPANIES AND IS EITHER FROM COMPANY UTILITY DRAWINGS OR COMPANY PROVIDED FIELD LOCATIONS. THE PLAN LOCATIONS SHOWN ARE NOT GUARANTEED. ADDITIONAL EXISTING UTILITIES MAY ALSO BE ENCOUNTERED.

7. CONTRACTOR WILL BE REQUIRED TO PROVIDE A MINIMUM ADVANCE NOTICE OF FORTY-EIGHT (48) HOURS TO UTILITY COMPANIES TO STARTING ANY EXCAVATION AS FOLLOWS:

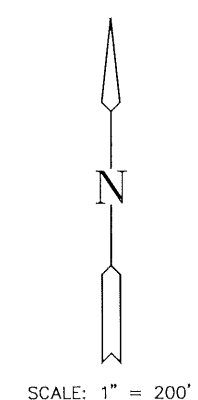
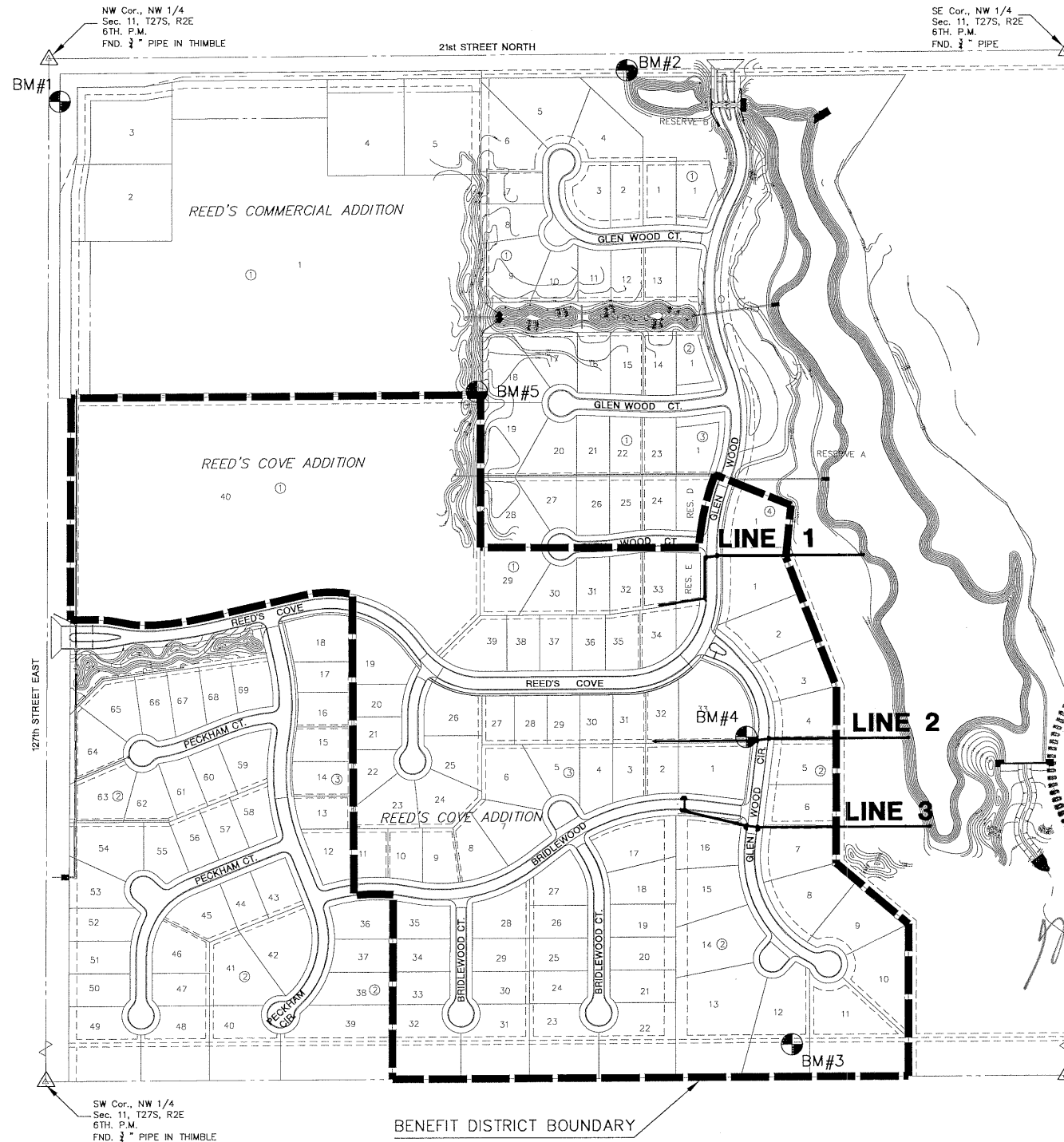
KANSAS ONE-CALL 687-2470
 OR 687-2470 (LOCAL WICHITA)

THE CONTRACTOR MUST NOTIFY THE FOLLOWING IN CASE OF EMERGENCY:

CABLEVISION 263-2061
 KG&E (GAS & ELECTRIC) 383-8600
 SOUTHWESTERN BELL TELEPHONE COMPANY 1-800-734-7590
 CITY OF WICHITA WATER & SEWER MAINT. 262-6000
 ARKLA GAS COMPANY 946-0096

8. RUBBLE FROM THE REMOVAL OF MISCELLANEOUS STRUCTURES AND EXCESS EXCAVATION WHICH IS TO BE WASTED SHALL BE DISPOSED OF ON SITES TO BE PROVIDED BY THE CONTRACTOR. THESE SITES SHALL BE APPROVED BY THE ENGINEER AS TO SUITABILITY, APPEARANCE AND SITE LOCATION. LOCATIONS THAT, IN THE OPINION OF THE ENGINEER, WILL LEAVE AN UNSIGHTLY APPEARANCE WILL NOT BE APPROVED. ALL DISPOSAL SITES MUST BE APPROVED BY THE KANSAS DEPARTMENT OF HEALTH AND ENVIRONMENT. MATERIAL EITHER STOCKPILED OR DISPOSED OF IN A FLOOD PLAIN WOULD REQUIRE A KANSAS STATE BOARD OF AGRICULTURE PERMIT. ANY MATERIAL DUMPED IN WATERS OF THE UNITED STATES OR WETLANDS IS SUBJECT TO U.S. CORPS OF ENGINEERS PERMITTING REGULATIONS. ANY MATERIAL BURIED OR STOCKPILED BEYOND APPROVED CONSTRUCTION LIMITS WOULD REQUIRE ADDITIONAL ARCHAEOLOGICAL INVESTIGATIONS UNLESS BURIED IN A PREVIOUSLY APPROVED BORROW LOCATION.

9. ALL DISTURBED AREAS SHALL BE SEEDED AND MULCHED. SEEDING SHALL BE RYE GRASS AT A RATE OF 200 LBS PER ACRE.

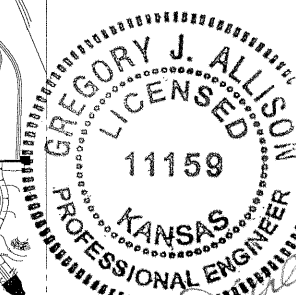


INDEX TO DRAWINGS

SHEET NO.	DESCRIPTION
1	TITLE SHEET
2	MANHOLE DETAILS
3-4	INLET DETAILS
5-6	SWS LINE 1
7-8	SWS LINE 2
9-10	SWS LINE 3
11-14	BMP DETAILS
15-16	FINAL PLAT

BENCHMARKS

- BM 1 1383.850 RR SPIKE IN W. FACE 1ST PP SOUTH OF 21ST ST. N. ON EAST SIDE OF 127TH ST. EAST, 110'+/- SOUTH & 27'+/- EAST OF NW COR SEC 11, T 27 S, R 2 E.
- BM 2 1351.770 SQUARE CUT W. END OF S. HEADWALL OF RCB UNDER 21ST ST. N., 1506'+/- E. & 25' +/- S. OF NW COR SEC 11, T 27 S, R 2 E.
- BM 3 1356.100 RR SPIKE IN N. FACE N. H-POLE, 4TH H-POLE EAST OF 127TH ST. EAST, 1940'+/- E. & 86'+/- NORTH OF W 1/4 COR SEC 11, T 27 S, R 2 E.
- BM 4 1354.300 "T" POST 15'+/- N. & 15'+/- W. OF SE COR LOT 1 BLOCK 3, REED'S COVE.
- BM 5 1363.37 "T" POST 10'+/- N. & 10'+/- W. OF SE COR LOT 1, BLOCK 1, REED'S COMMERCIAL (NE COR LOT 40, BLOCK 1, REED'S COVE).



H:\CIVIL\02121\DWG\SWS\PH2\02121_DT.DWG

REED'S COVE ADDITION - PHASE 2
 PROJECT NAME

STORM WATER SEWER PLANS
 SHEET TITLE

ENGINEERING CONSULTANTS
 411 N. WEBB ROAD
 WICHITA, KS. 67206
 316-684-9600

DESIGN BY: DFL DRAWN BY: DMU CHECKED BY: GJA

DATE: SEPTEMBER 2003 DRAWING NAME: 02121_DT SHEET / OF: 1 / 16