

MH 5546-586  
 Remove Manhole  
 Construct Standard Manhole (4")  
 Approx MH depth = 7.4 ft

Remove 193 lf of Pipe  
 Install 195 lf of Pipe  
 (slight relocation - see note on this page)  
 Estimated 4 Service Reconnections (4")

MH 5546-585  
 Remove Manhole (oversized)  
 (see note on this page)  
 Construct Standard Manhole (4")  
 Approx MH depth = 6.9 ft

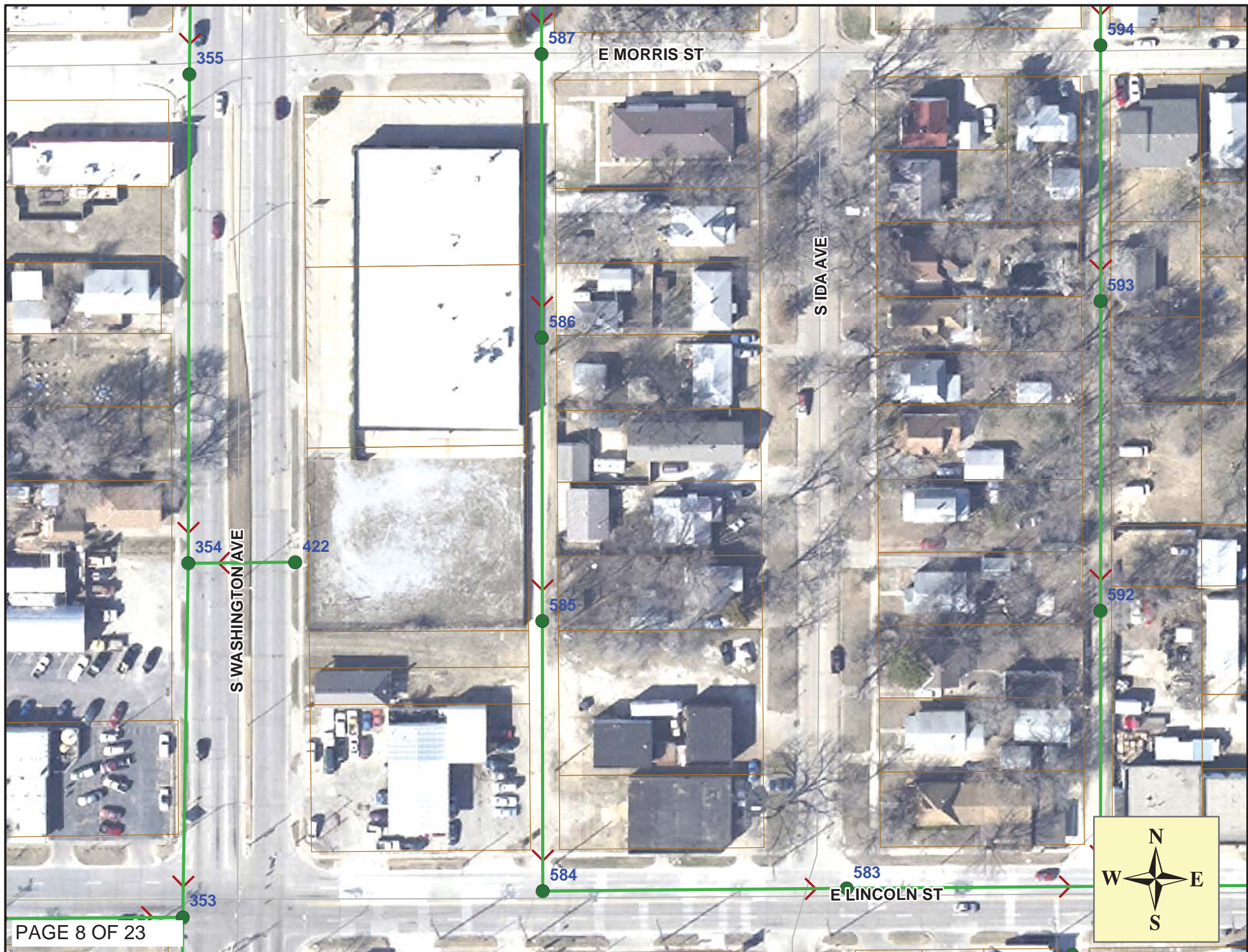
Manhole 5546-585 is a rectangular shaped brick structure and is approx 6 feet wide (west to east). The pipe from the north comes in on the west side of the structure and the pipe going out to the south exits on the east side of the structure. Contractor shall construct the new manhole over the outgoing pipe.

Contractor shall relocate the new pipe slightly to the east as necessary to lay pipe in a straight line between MH 5546-586 and the new MH 5546-585.

MH 5546-584  
 Remove & Replace  
 Manhole Bench & Invert  
 Approx MH depth = 5.3 ft

**SITE 4**





## Video Inspection Master Report

5/9/2012

1:03 PM

US Structure: 5546-586                      1117 S IDA AVE                      Date Insp: 9/13/2011                      Basin: C02B  
 DS Structure: 5546-585                      1125 S IDA AVE                      Dir Televised: Upstream To Downstream

**Pipe Information**

Project No. : D-024                      Dia: 8                      Material: VCP                      Length: 192.6                      Slope: 0.002                      Surface: Unpaved alley

Obs. #	VTR Counter	Distance	Location	Description	Rating	Obsrvd (gpm)	Ratings			Remain (gpm)
							Est. (gpm)	Struct	Clean	
1		0.0	5546-586	US Manhole	1	0.000	0	0	0.000	
2		0.5		Crack-Horizontal	2	0.002	2	0	0.002	
3		1.3		Crack-Horizontal	3	0.004	5	0	0.004	
4		13.3		Wye Service	1	0.000	0	0	0.000	
5		15.9		Wye Service	1	0.000	0	0	0.000	
6		15.9		Break-In Conn	2	Not addressed / not sealed at main - LML				
7		24.1		Crack-Radial	3	0.004	5	0	0.004	
8		38.4		Wye Service	1	0.000	0	0	0.000	
9		38.4	1119 S IDA	Break-In Conn	3	Fixed by Sewer Maintenance - LML				
10		41.2		Wye Service	1	0.000	0	0	0.000	
11		42.0		Crack-Radial	3	0.004	5	0	0.004	
12		44.6		Crack-Radial	2	0.002	2	0	0.002	
13		46.9		Crack-Radial	2	0.002	2	0	0.002	
14		63.5		Wye Service	2	Not sealed at main ? _ LML				
15		64.3		Crack-Radial	2	0.002	2	0	0.002	
16		66.0		Wye Service	1	0.000	0	0	0.000	
17		67.3	1121 S IDA	Break-In Conn	4	Fixed by Sewer Maintenance - LML				
18		71.9		Crack-Radial	2	0.002	2	0	0.002	
19		82.0		Crack-Radial	3	0.004	5	0	0.004	
20		88.7		Wye Service	1	0.000	0	0	0.000	
21		91.1		Wye Service	1	0.000	0	0	0.000	
23		109.1		Crack-Horizontal	2	0.002	2	0	0.002	
24		109.2		Crack-Radial	3	0.004	5	0	0.004	
25		113.3		Wye Service	1	0.000	0	0	0.000	
26		116.0		Wye Service	1	0.000	0	0	0.000	
27		129.3		Crack-Radial	3	0.004	5	0	0.004	
28		137.0		Broken Pipe	3	0.010	60	0	0.010	
29		138.4		Wye Service	1	0.000	0	0	0.000	
30		139.3		Crack-Radial	3	0.004	5	0	0.004	
31		140.3	1123 S IDA	Break-In Conn	2	0.002	0	0	0.002	
32		156.7		Broken Pipe	3	0.010	60	0	0.010	
33		161.7		Crack-Radial	2	0.002	2	0	0.002	
34		163.4		Wye Service	1	0.000	0	0	0.000	
35		166.0		Wye Service	1	0.000	0	0	0.000	
36		169.0		Crack-Radial	3	0.004	5	0	0.004	
37		174.2		Crack-Horizontal	3	0.004	5	0	0.004	
38		176.7		Crack-Horizontal	3	0.004	5	0	0.004	
39		179.0	Joint	Offset	3	0.010	20	0	0.010	
40		179.0		Crack-Radial	3	0.004	5	0	0.004	
41		181.4		Crack-Radial	3	0.004	5	0	0.004	
42		184.2		Crack-Radial	2	0.002	2	0	0.002	
43		185.9		Wye Service	1	0.000	0	0	0.000	
44		186.6		Crack-Radial	3	0.004	5	0	0.004	
45		187.3	1125 S IDA	Break-In Conn	2	0.002	0	0	0.002	
46		190.7	5546-585	DS Manhole	Pipes in & out don't line up – odd size structure -LML					