

Remove 27 lf of Pipe
Install 27 lf of Pipe
(partial line replacement) (see tv log)
(tie to existing VCP where MH 5546-604 is removed and replace pipe to new MH 5546-605)

Estimated 1 Service Reconnection (4")
Remove & Replace 35 lf of Concrete
Pavement (incl curb/gutter, if necessary)
Install approx 27 lf of Fill Sand
(flushed & vibrated)
Estimated 1 Curb Inlet Protection

The water main is located 8' west of the west curb line of Laura. The storm water lines lay west of the sewer line.

Sta 1+69
MH 5546-605
Abandon Manhole (in pavement)
Approx MH depth = 4.9 ft
(pavement removal and replacement shall be subsidiary)

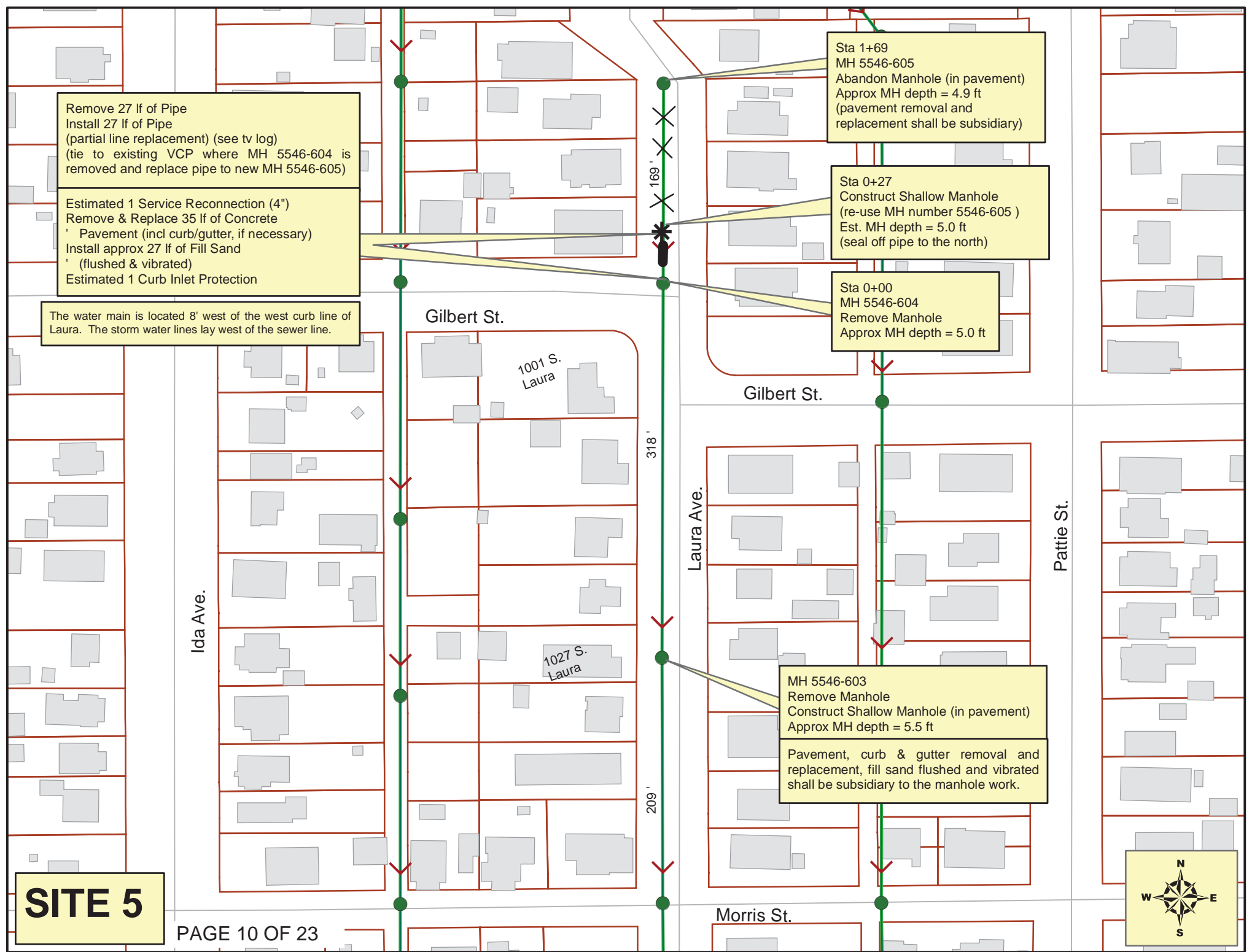
Sta 0+27
Construct Shallow Manhole
(re-use MH number 5546-605)
Est. MH depth = 5.0 ft
(seal off pipe to the north)

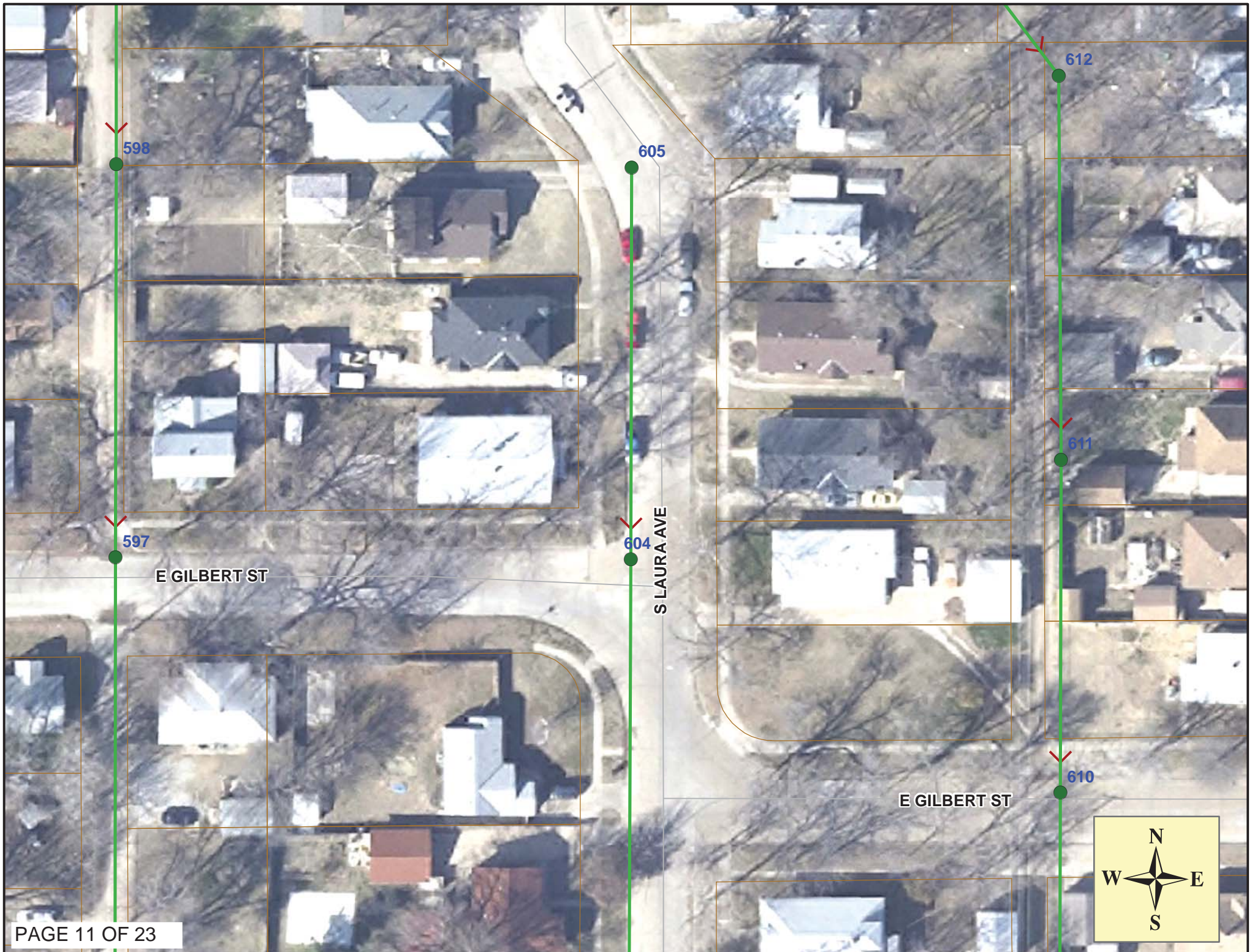
Sta 0+00
MH 5546-604
Remove Manhole
Approx MH depth = 5.0 ft

MH 5546-603
Remove Manhole
Construct Shallow Manhole (in pavement)
Approx MH depth = 5.5 ft

Pavement, curb & gutter removal and replacement, fill sand flushed and vibrated shall be subsidiary to the manhole work.

SITE 5





Video Inspection Master Report

12/13/2012

2:45 PM

US Structure: 5546-605 729 S LAURA ST Date Insp: 9/15/2011 Basin: C02B
 DS Structure: 5546-604 735 S LAURA ST Dir Televised: Upstream To Downstream

Pipe Information

Shape: Round Length Status: Project No. : D-028
 Dia/Ht: 8 Material: VCP Index:
 Length: 168.8 Slope: 0.148 Surface:

Comments: MANHOLE 605 HOLDING WATER, MANHOLE 604 NO INVERTS, HOLDING WATER.

Obs. #	VTR Counter	Distance	Location	Description	Rating	Obsrvd (gpm)	Ratings			Remain (gpm)
							Est. (gpm)	Struct	Clean	
1		0.0	5546-605	US Manhole	3	0.000	0	0	0.000	
2		0.0	Joint	Offset	3	0.010	20	0	0.010	
3		0.0		Crack-Radial	2	0.002	2	0	0.002	
4		1.9		Wye Service	1	0.000	0	0	0.000	
5		18.2		Crack-Radial	3	0.004	5	0	0.004	
6		29.8		Wye Service	1	0.000	0	0	0.000	
7		32.4	Joint / gapped	Offset	3	0.010	20	0	0.010	
8		37.9	Joint	Offset	2	0.000	0	0	0.000	
9		55.1		Wye Service	1	0.000	0	0	0.000	
10		70.8		Crack-Radial	3	0.004	5	0	0.004	
11		73.6		Crack-Radial	3	0.004	5	0	0.004	
12		82.8		Wye Service	1	0.000	0	0	0.000	
13		107.9		Wye Service	1	0.000	0	0	0.000	
14		108.4		Roots	3	0.008	5	8	0.008	
15		113.3		Roots	2	0.004	2	4	0.004	
16		116.0		Roots	2	0.004	2	4	0.004	
17		118.5		Roots	3	0.008	5	8	0.008	
18		120.7		Roots	3	0.008	5	8	0.008	
19		128.5		Roots	2	0.004	2	4	0.004	
20		132.8		Wye Service	1	0.000	0	0	0.000	
21		136.5		Crack-Radial	3	0.004	5	0	0.004	
22		140.9		Roots	2	0.004	2	4	0.004	
23		147.0	735 S LAURA	West Break-In Conn	2	0.002	0	0	0.002	
24		150.8	Joint	Offset	3	0.010	20	0	0.010	
25		155.9	Joint	Offset	3	0.010	20	0	0.010	
26		156.4	Invert	Crack-Radial	3	0.004	5	0	0.004	
27		166.2		Other	3	0.000	0	0	0.000	
28		169.1	5546-604	DS Manhole	2	0.000	0	0	0.000	

Only one tap on this line. All the other wyes are sealed off. - LML