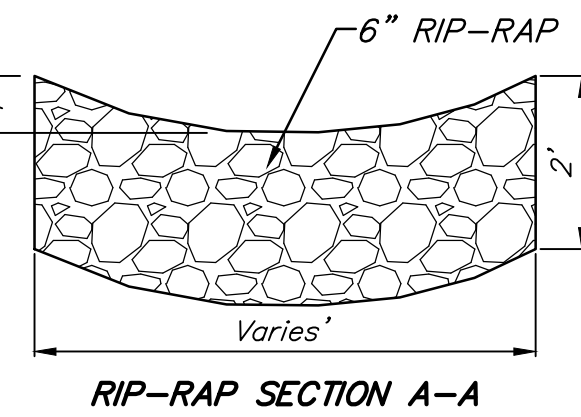


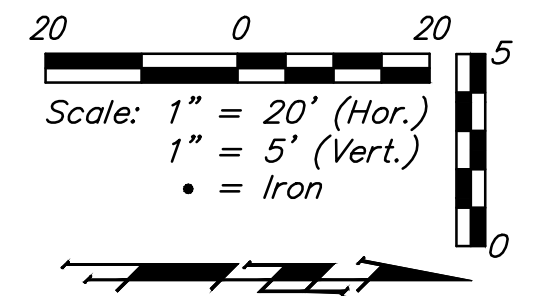
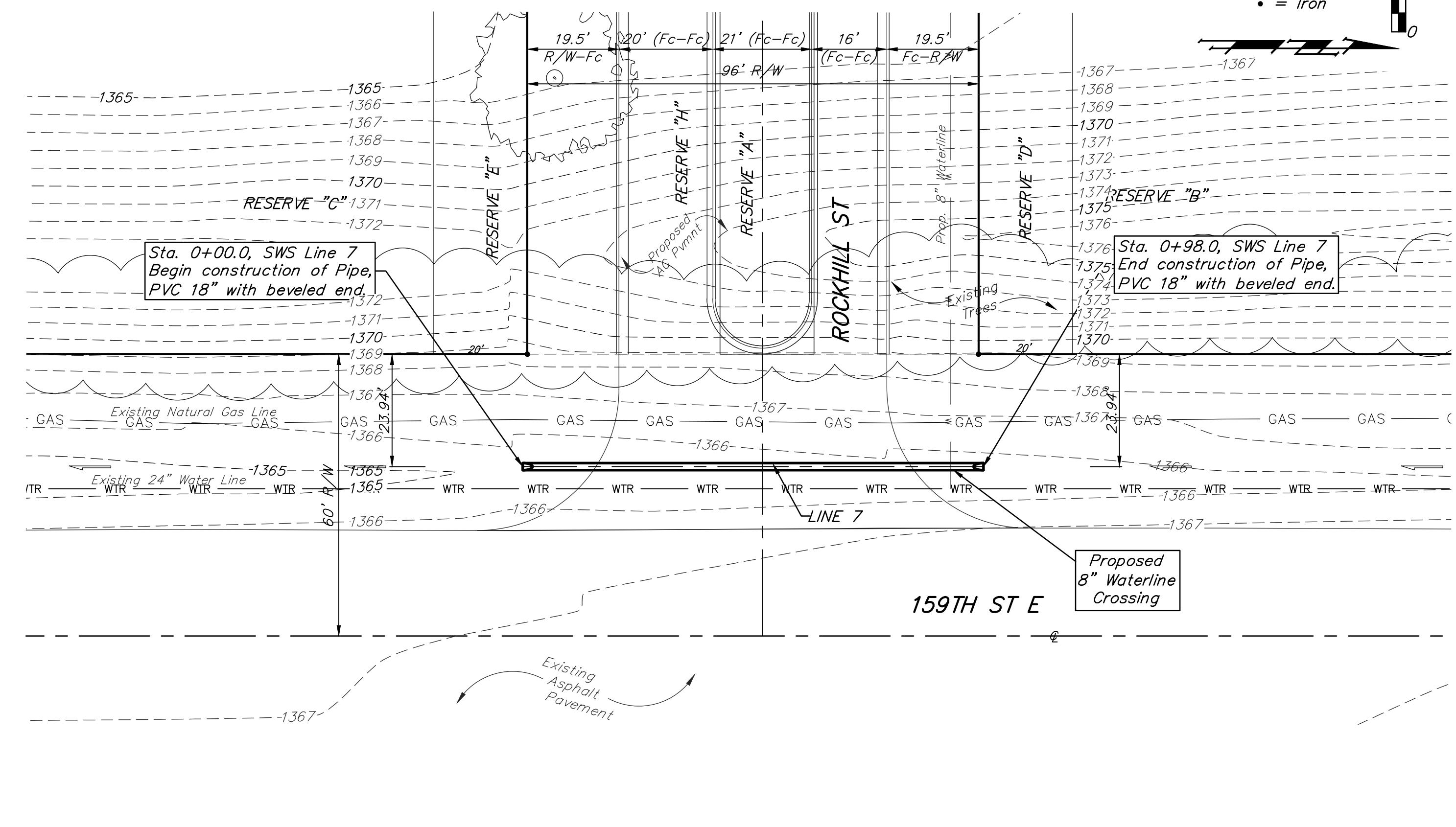
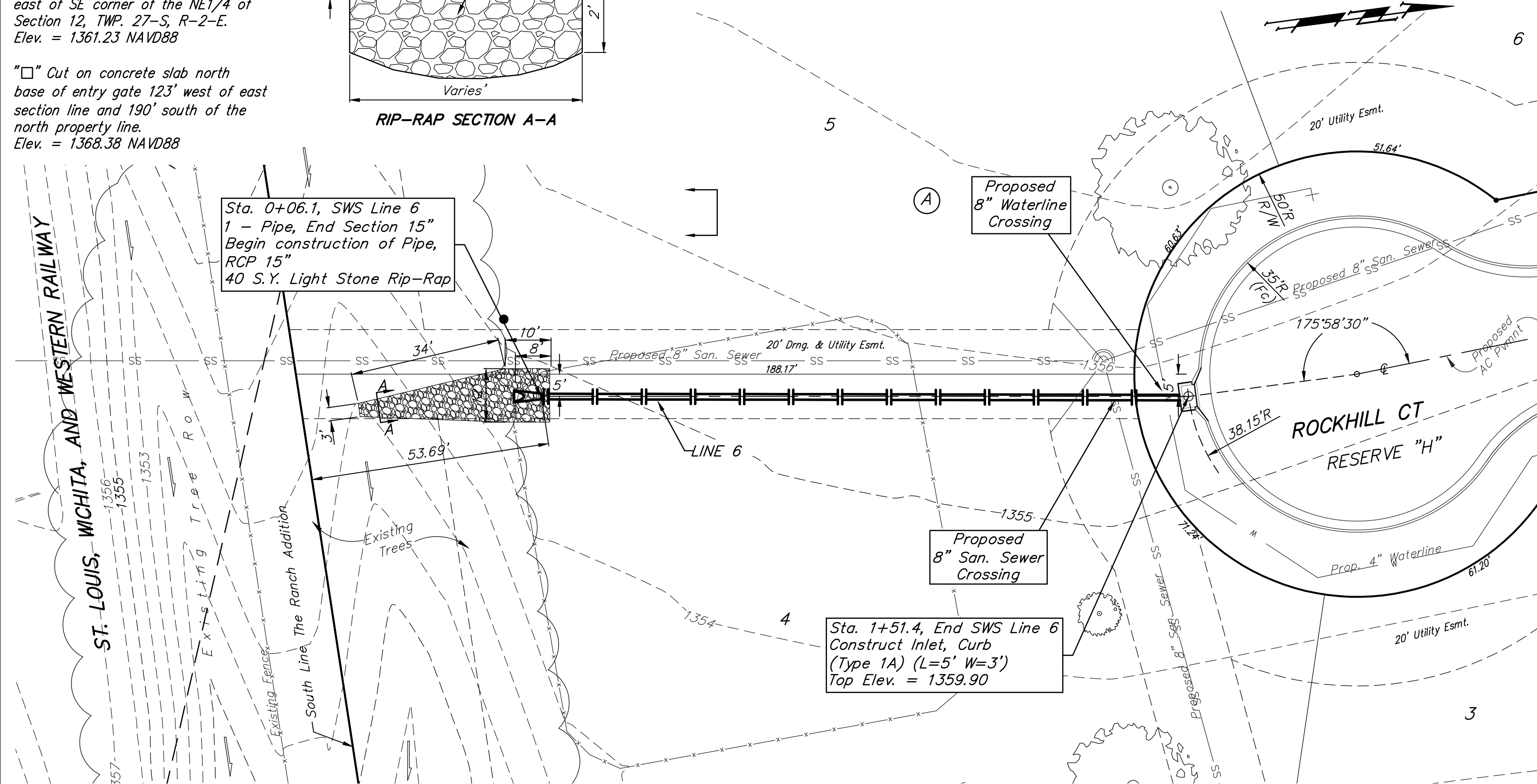
BENCHMARKS

"X" Cut top of 18" RCP 1' east of west end of RCP 31' south and 35' east of SE corner of the NE1/4 of Section 12, TWP. 27-S, R-2-E. Elev. = 1361.23 NAVD88

"□" Cut on concrete slab north base of entry gate 123' west of east section line and 190' south of the north property line. Elev. = 1368.38 NAVD88

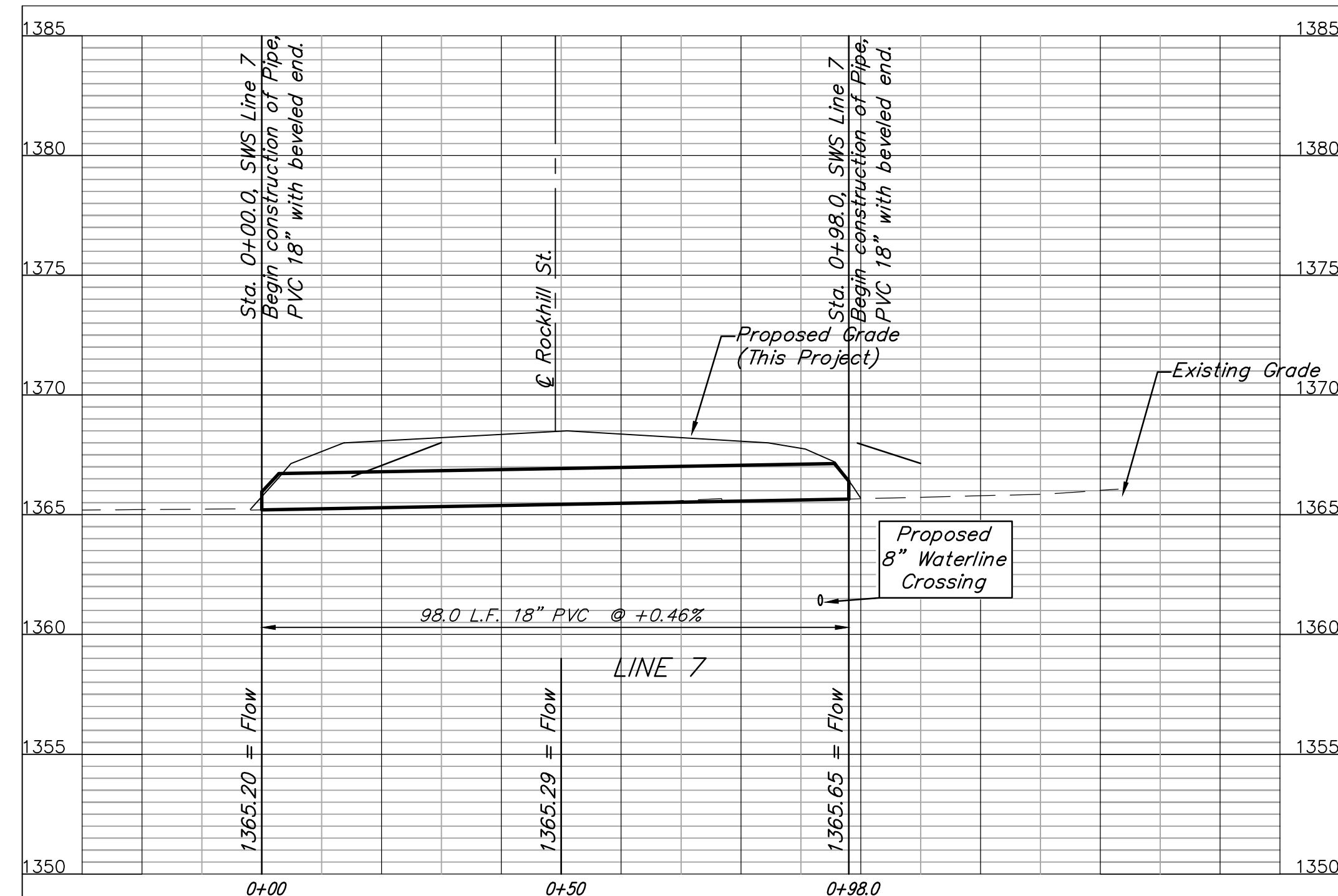
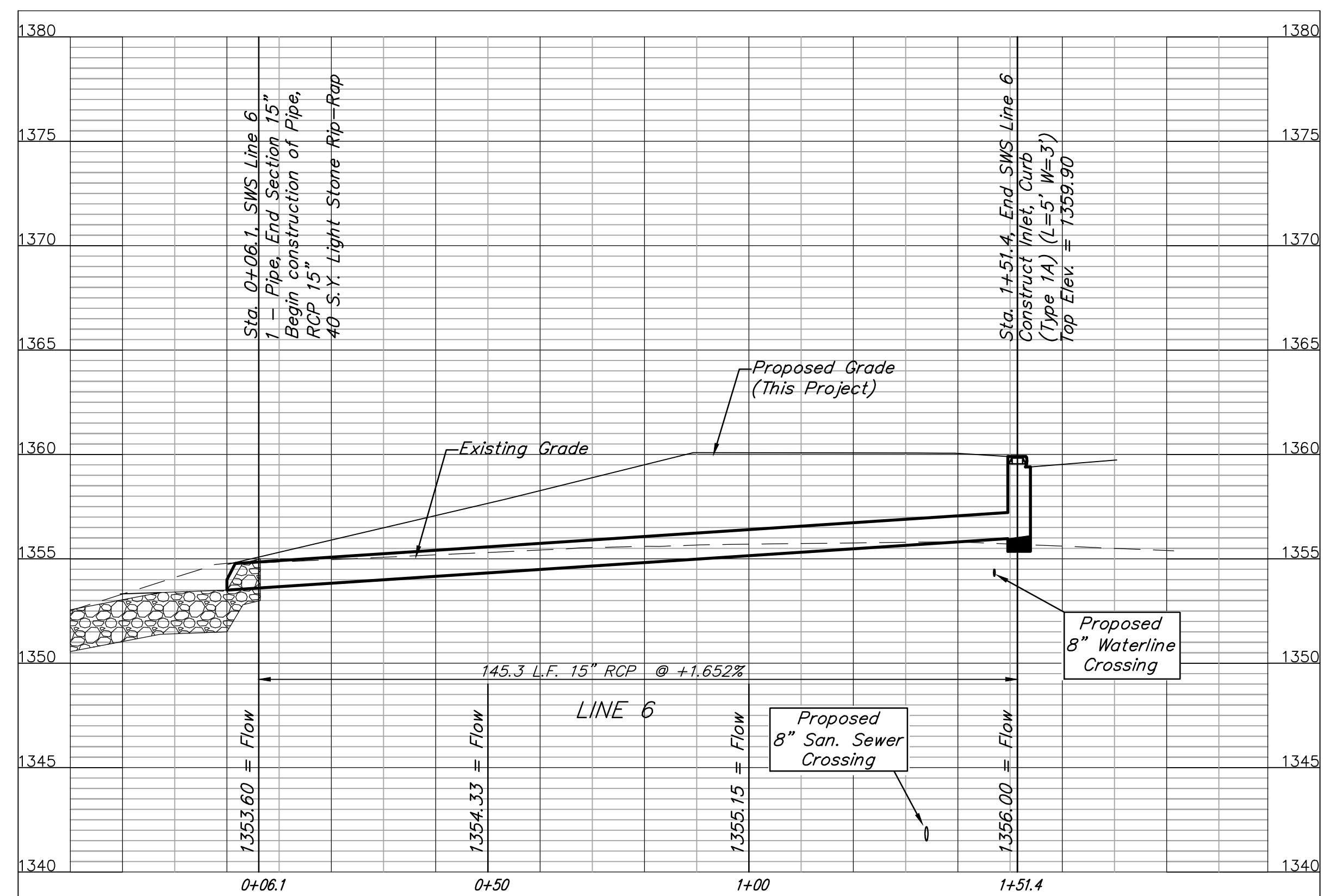


THE RANCH ADDITION



Remove Existing Trees Only as **ABSOLUTELY** Necessary For Construction and with the permission of the Developer or Baughman Co. Trees Not In Direct Conflict With Proposed New Construction Shall Remain And Be Protected From Damage. Cost to be Included in Bid Item "Site Clearing"

Storm Water Sewer Maintenance:
All storm sewer that is constructed on this project with the exception of Line 10 shall be owned and maintained by the City of Wichita.



	The Ranch Addition	
	LINE 6 & LINE 7	
STORM WATER DRAIN #391		
<small>Baughman Company, P.A. 515 Ellis St., Wichita, KS 67211 P 316-263-2771 F 316-262-0149 ENGINEERING SURVEYING PLANNING LANDSCAPE ARCHITECTURE</small>		
PROJECT NUMBER 468-84291	DESIGN AEG	DRAWN JAK/TMS
REVISIONS:	APPROVED	DATE 01/14
	SCALE Noted	SHEET
		7 OF 40