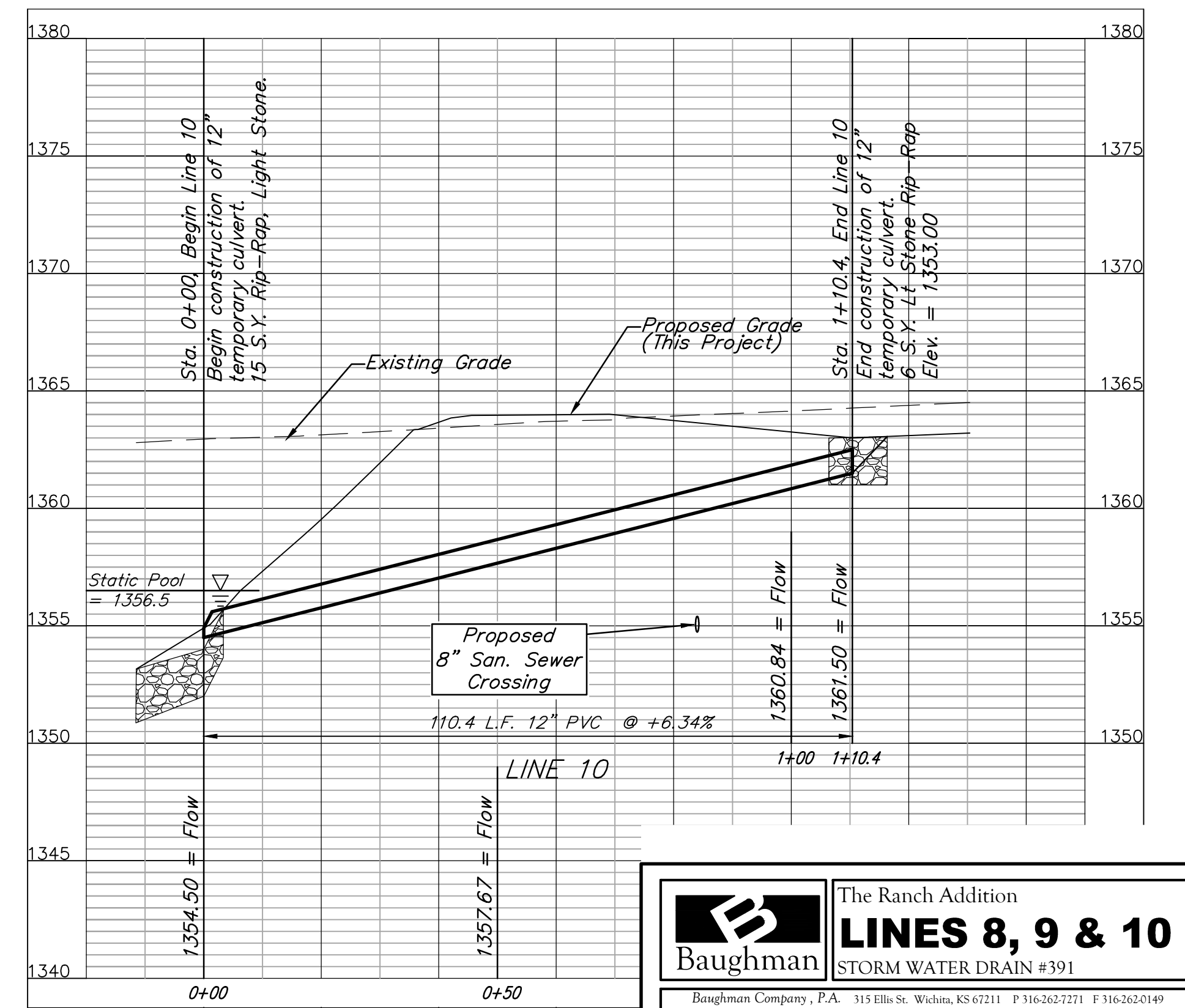
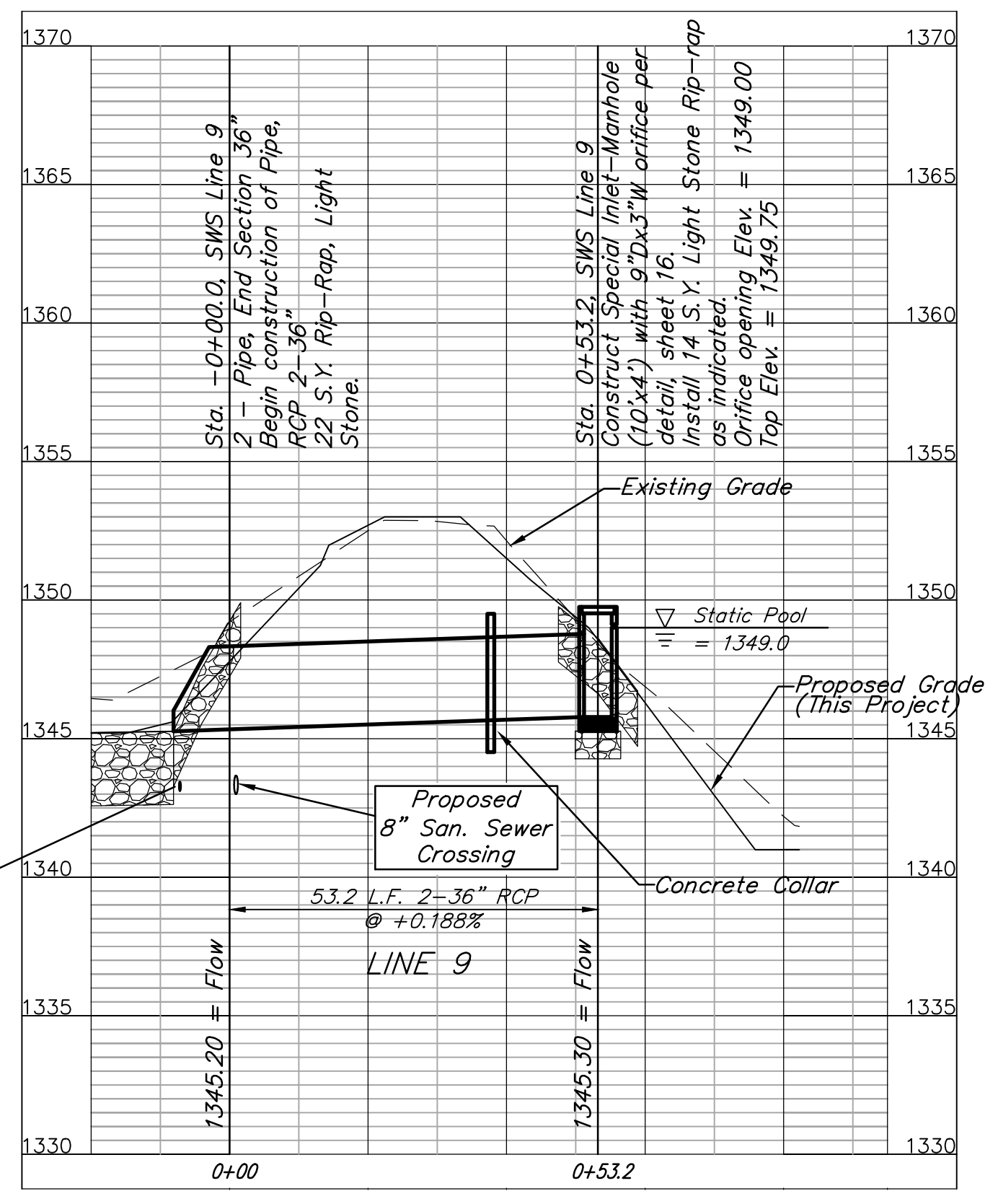
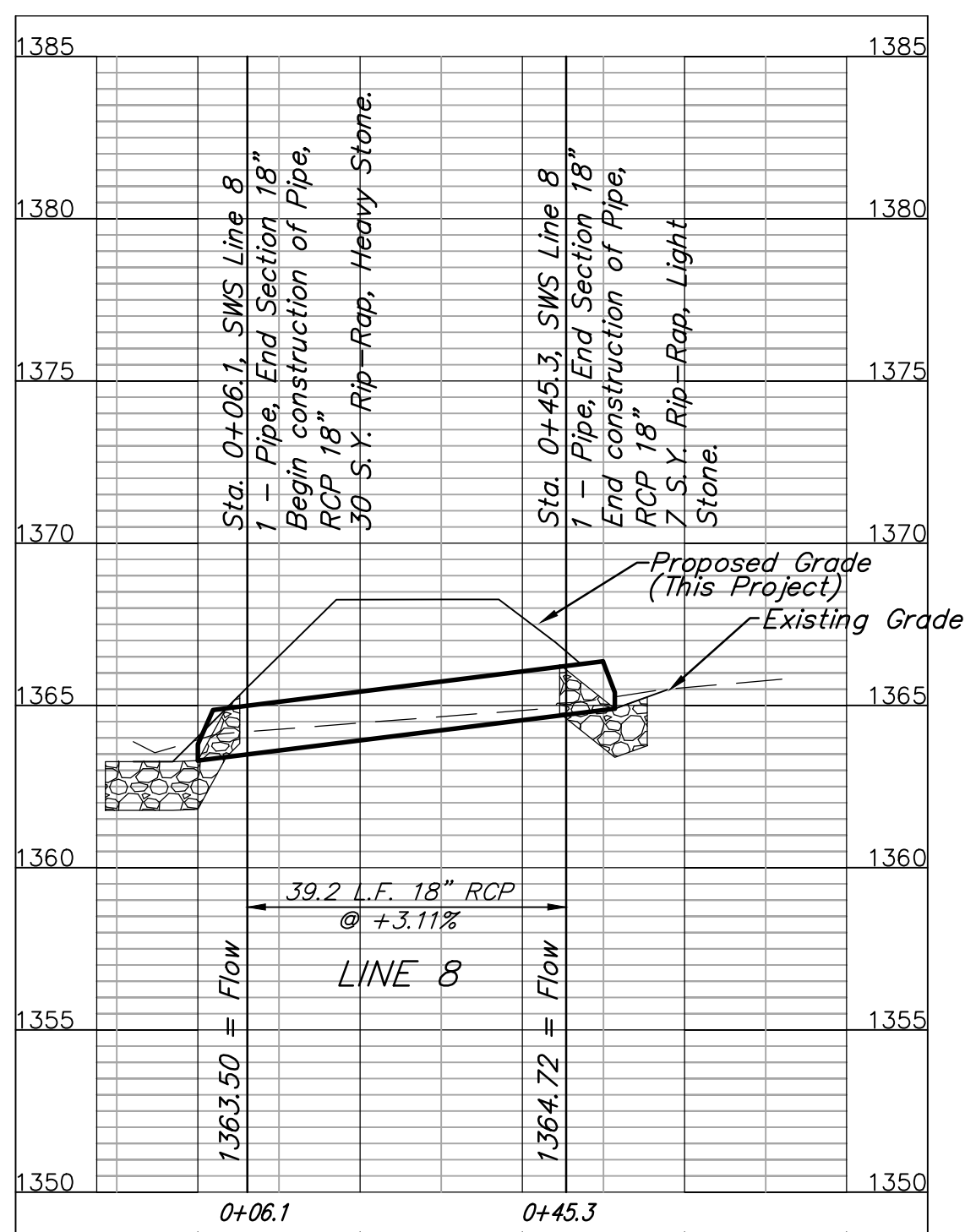
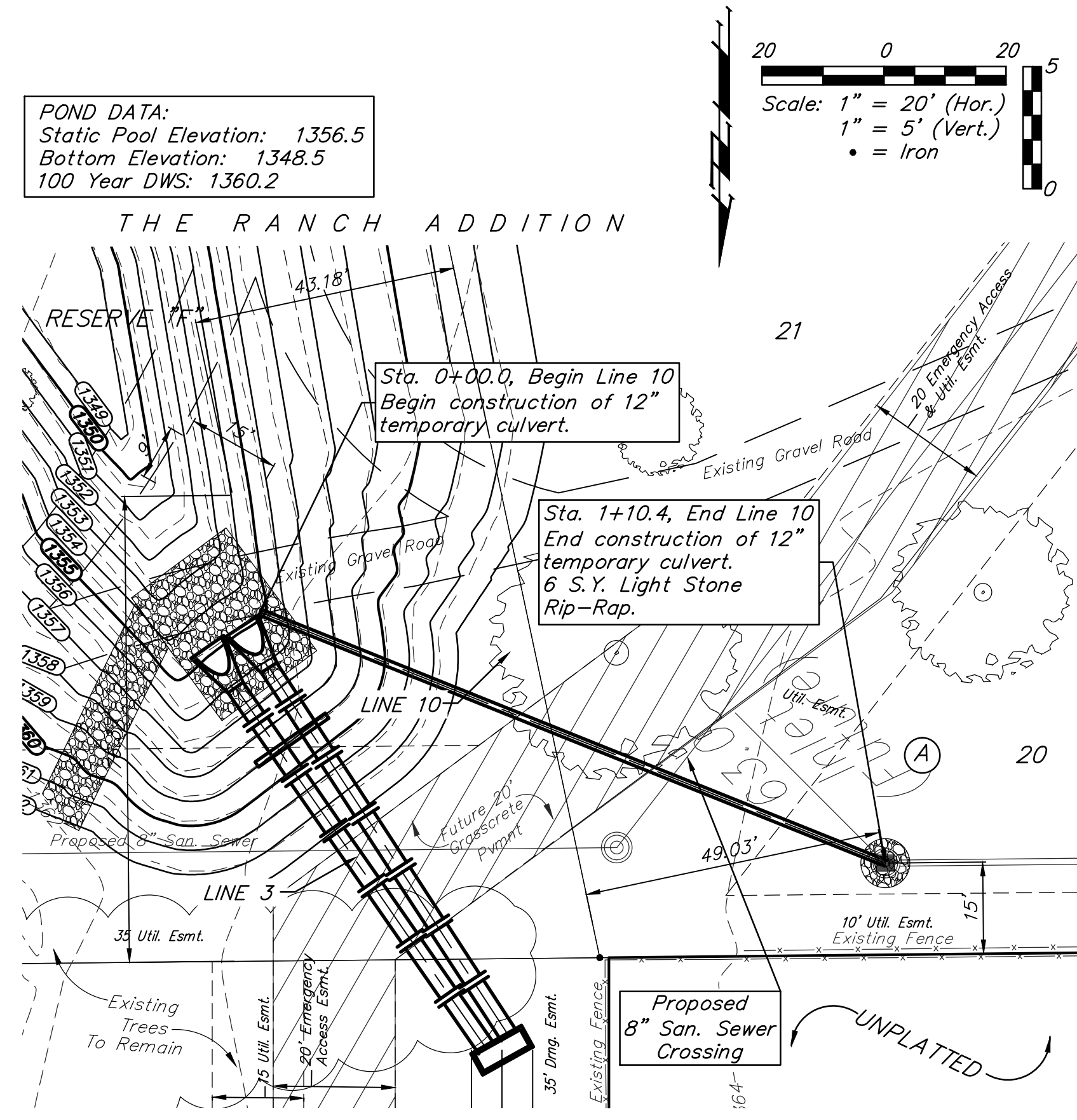
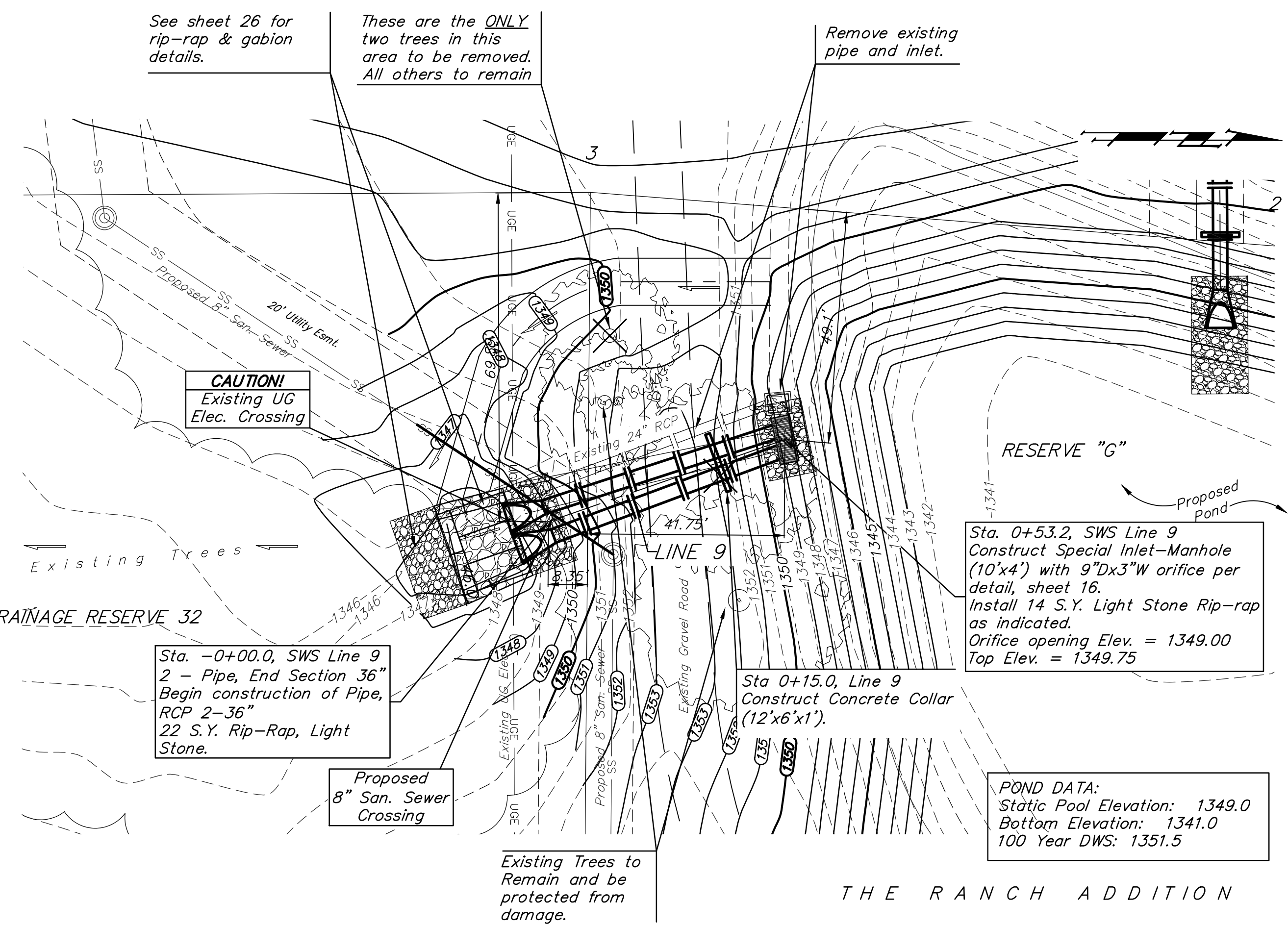
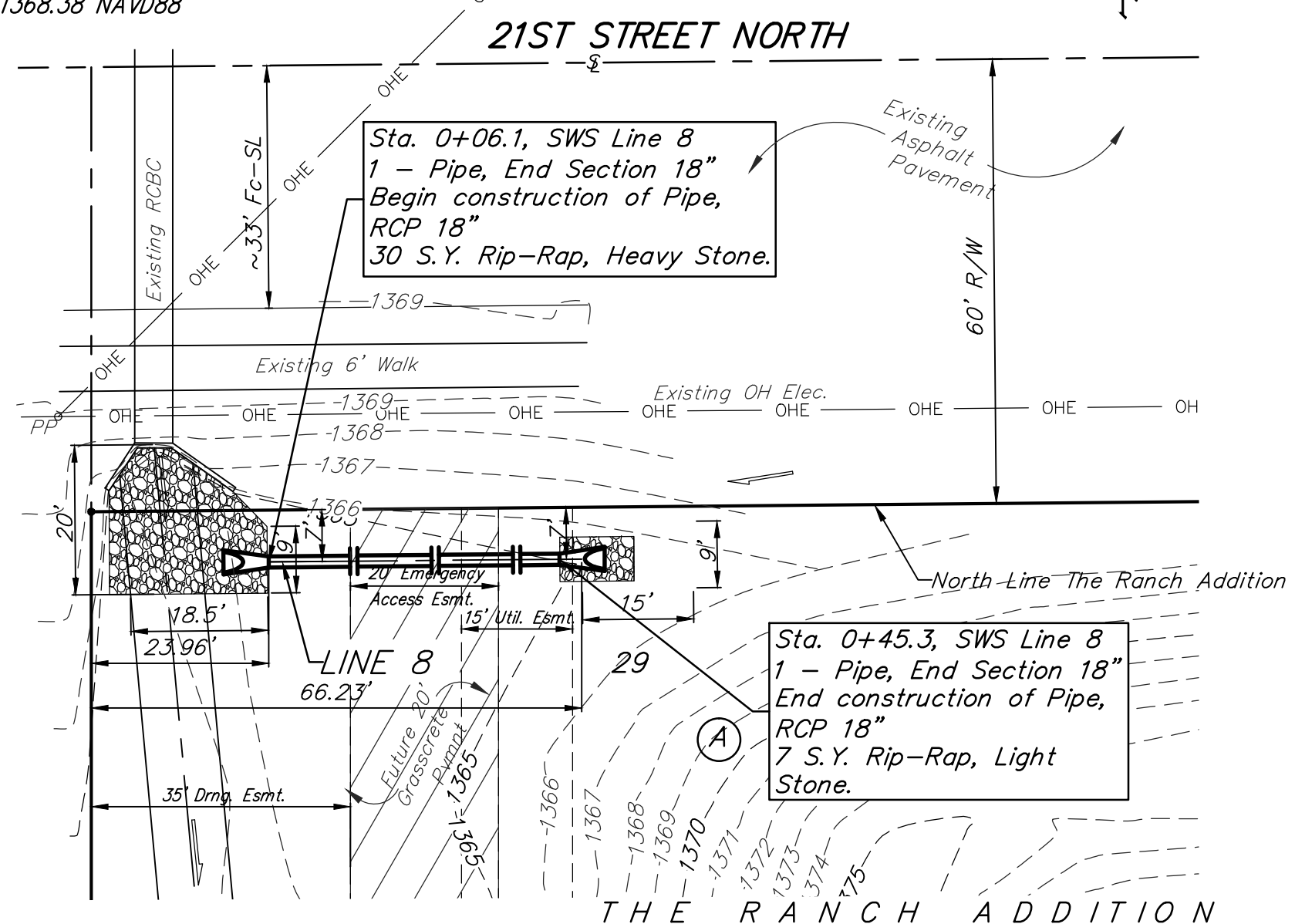


BENCHMARKS

"X" Cut top of 18" RCP 1' east of west end of RCP 31' south and 35' east of SE corner of the NE1/4 of Section 12, TWP. 27-S, R-2-E. Elev. = 1361.23 NAVD88

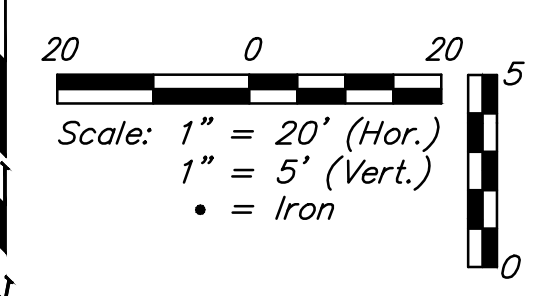
"□" Cut on concrete slab north base of entry gate 123' west of end section line and 190' south of the north property line. Elev. = 1368.38 NAVD88



*Contractor to coordinate abandonment of electric service line with developer, and Westar. Contact Heide Hancock, 261-6554, two weeks prior to construction.

Storm Water Sewer Maintenance:
All storm sewer that is constructed on this project with the exception of Line 10 shall be owned and maintained by the City of Wichita.

POND DATA:
Static Pool Elevation: 1356.5
Bottom Elevation: 1348.5
100 Year DWS: 1360.2



Baughman The Ranch Addition
LINES 8, 9 & 10
STORM WATER DRAIN #391

Baughman Company, P.A. 515 Ellis St. Wichita, KS 67211 P 316-262-2771 F 316-262-0149
ENGINEERING | SURVEYING | PLANNING | LANDSCAPE ARCHITECTURE

PROJECT NUMBER: 468-84291
DESIGN: AEG
DRAWN: JAK/TMS
APPROVED: [Signature]
DATE: 01/14

SCALE: Noted
SHEET: 8 OF 40

