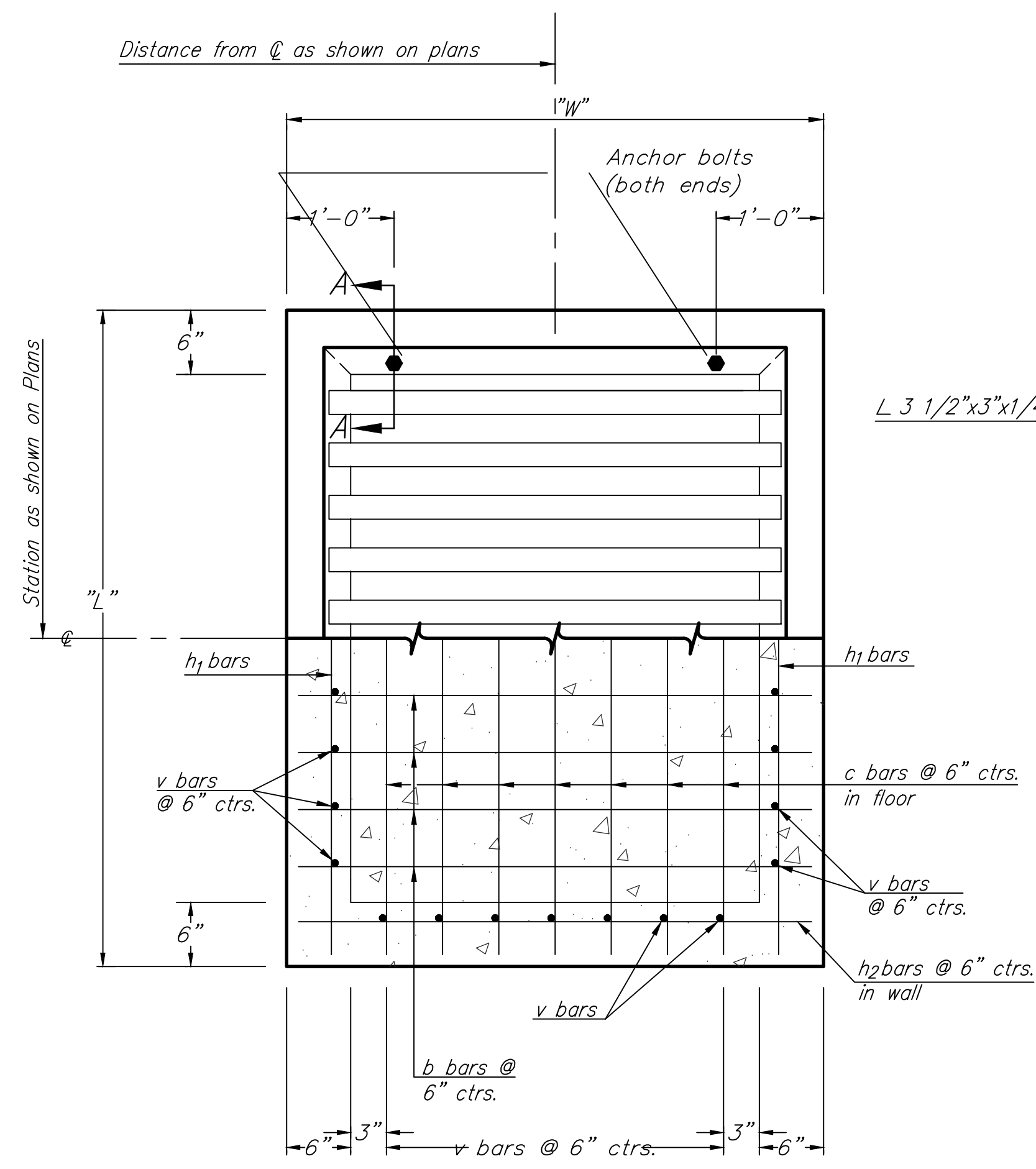
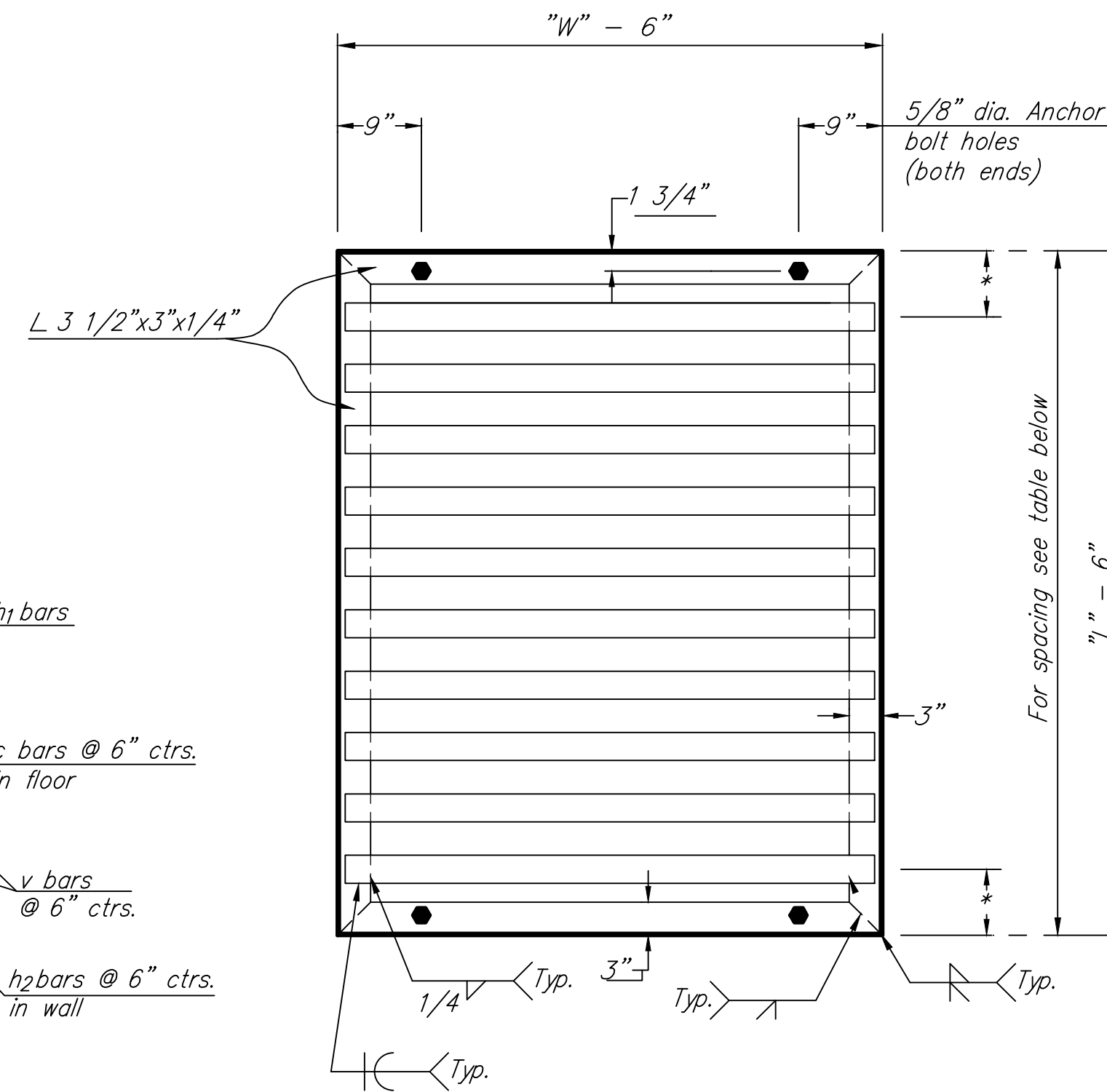


SECTION



PLAN AND SECTION



GRATE UNIT DETAILS

PIPE DIMENSIONS AND SPACING

L x W	No. of Bars	Dia. x Length x Spacing	*

**GENERAL NOTE**

Use Class A Concrete throughout. All exposed edges shall be finished with an edging tool.

At the Contractors option, Class A Concrete (AE) or mix used in concrete pavement may be used throughout.

In general, pipes will enter and leave the manhole at various positions. Where possible bend bars around pipes.

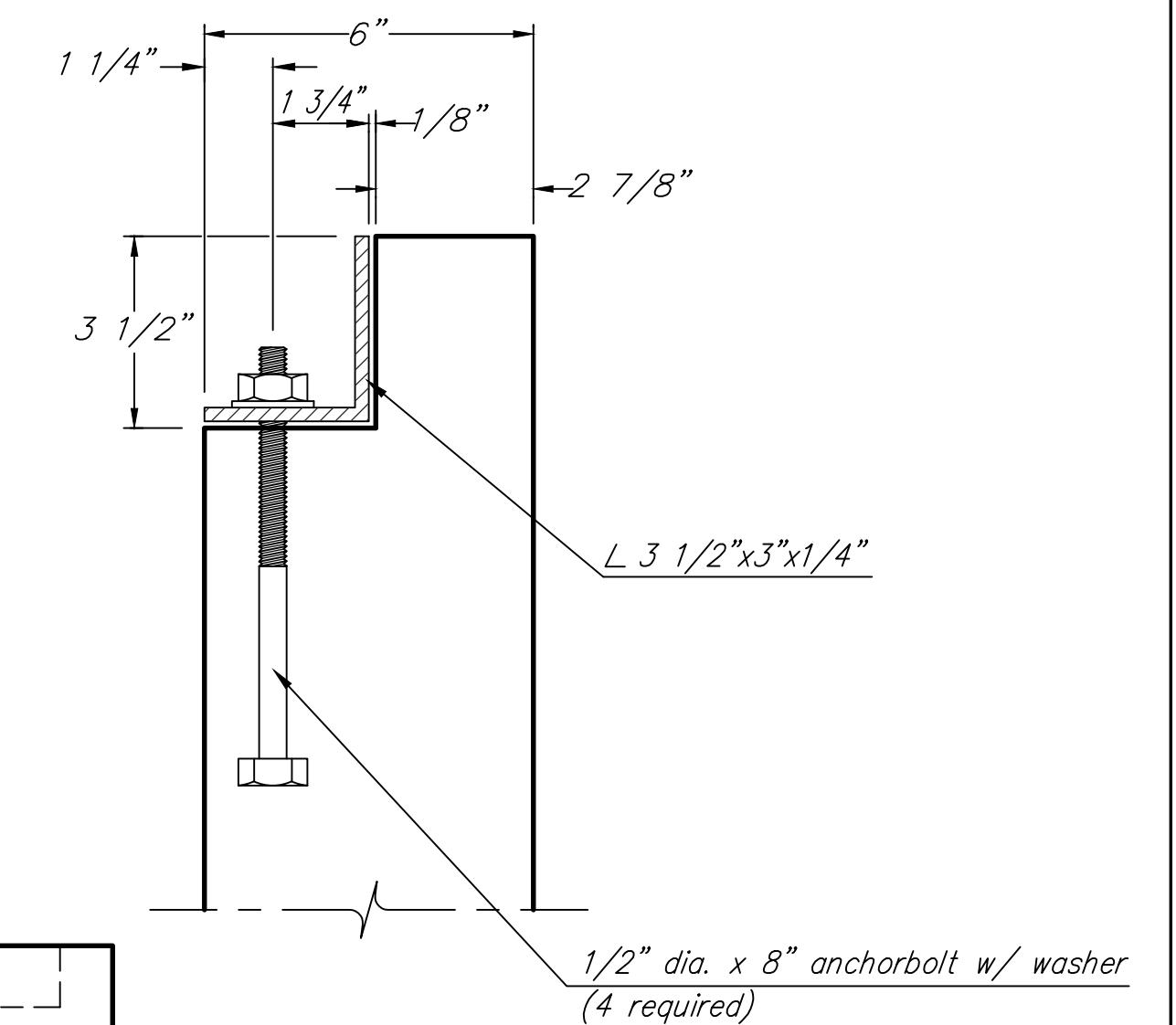
Floor of inlet shall be shaped as shown on Precast Concrete Manhole Detail. Concrete used for shaping shall conform to city of Wichita specifications for concrete pavement mix. No addition in concrete quantities shall be made for shaping floor of inlets.

No deductions in concrete quantities shall be made for pipe openings.

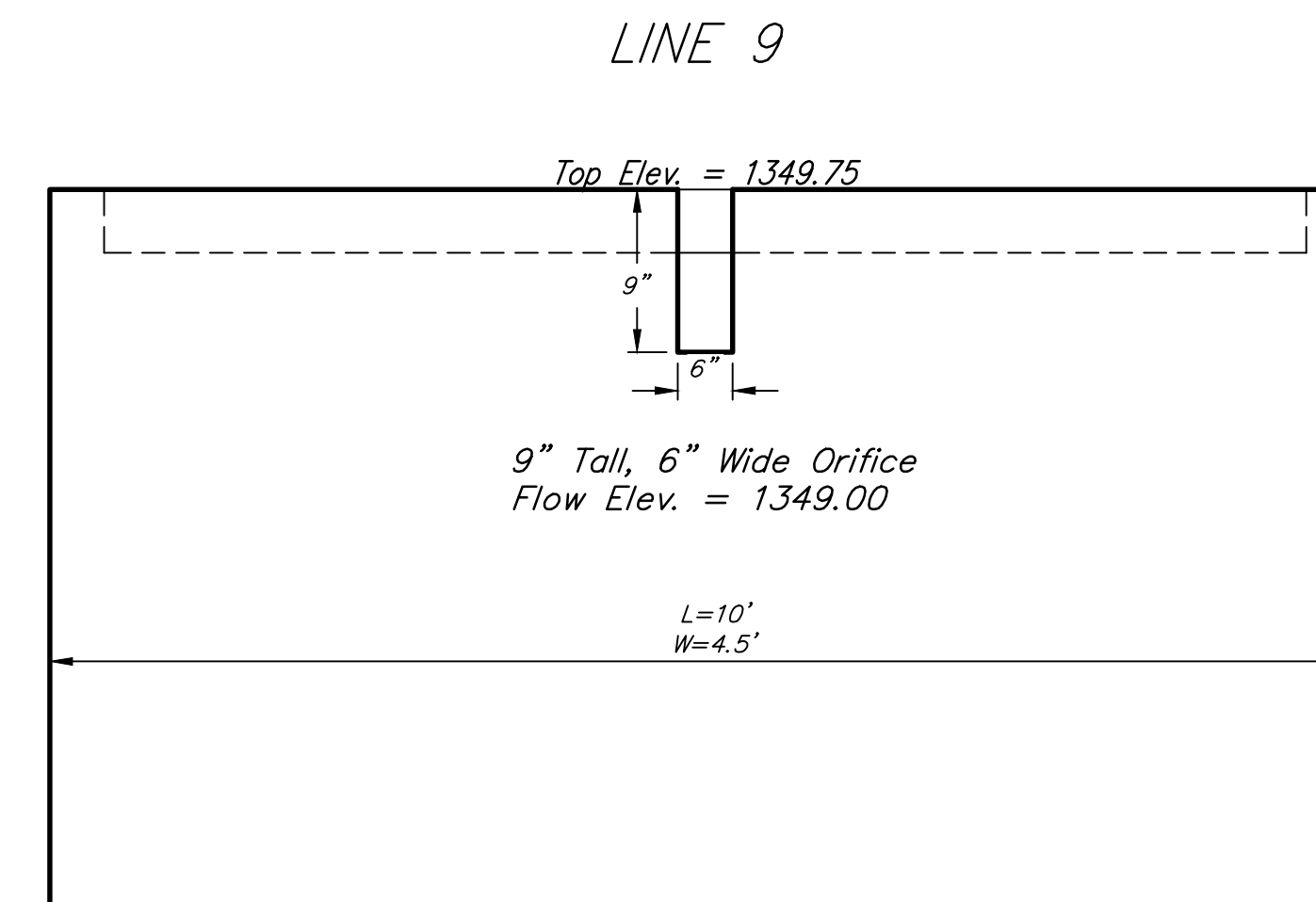
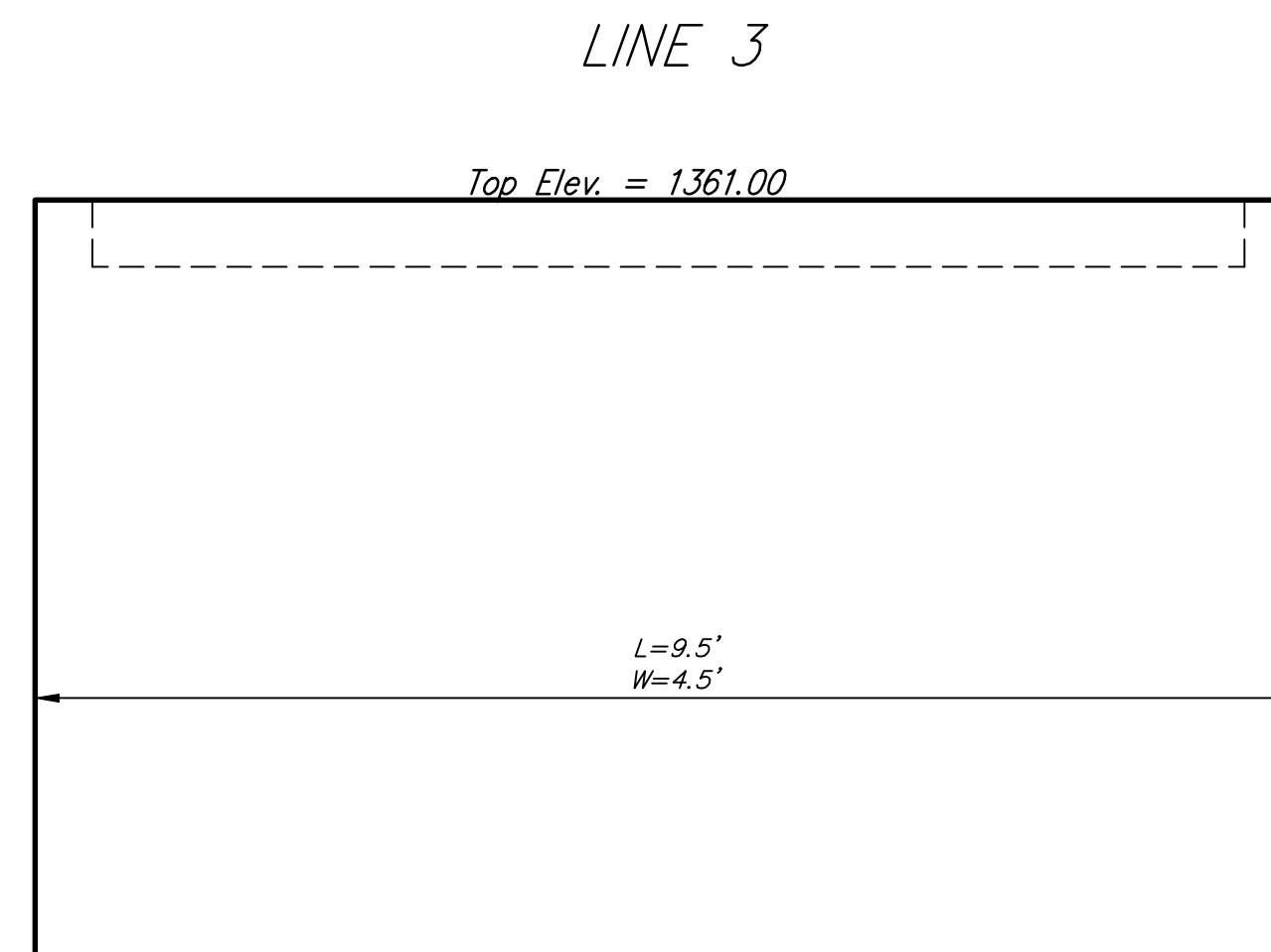
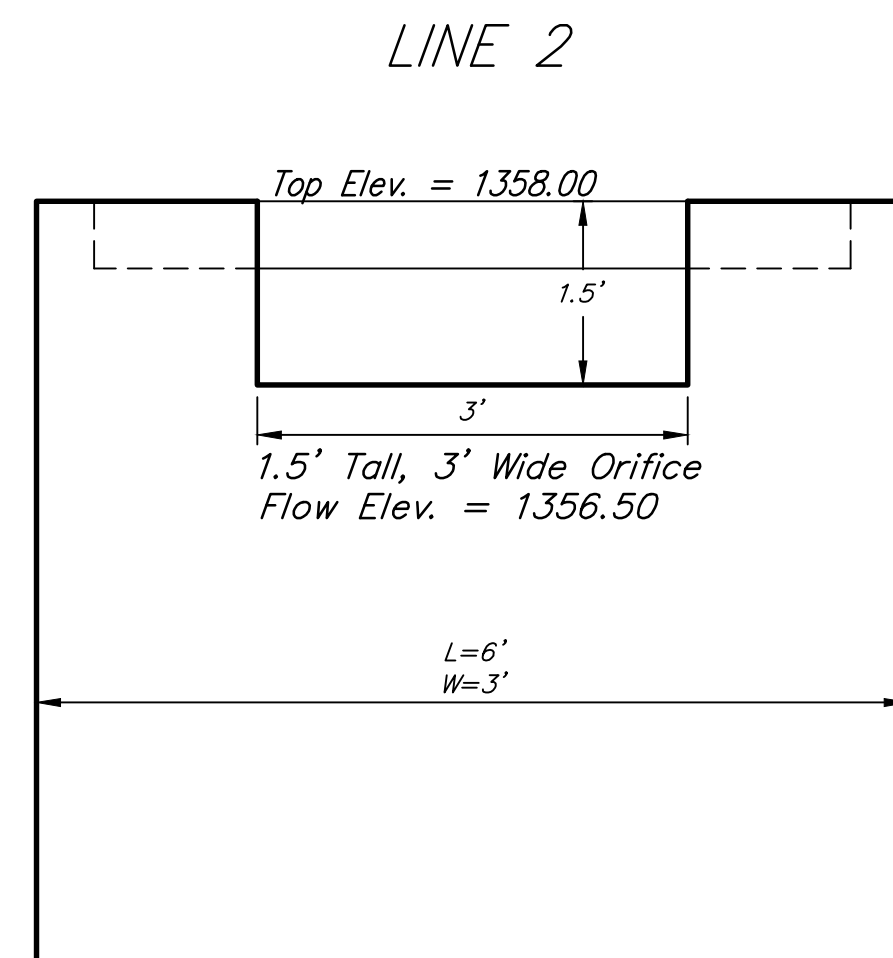
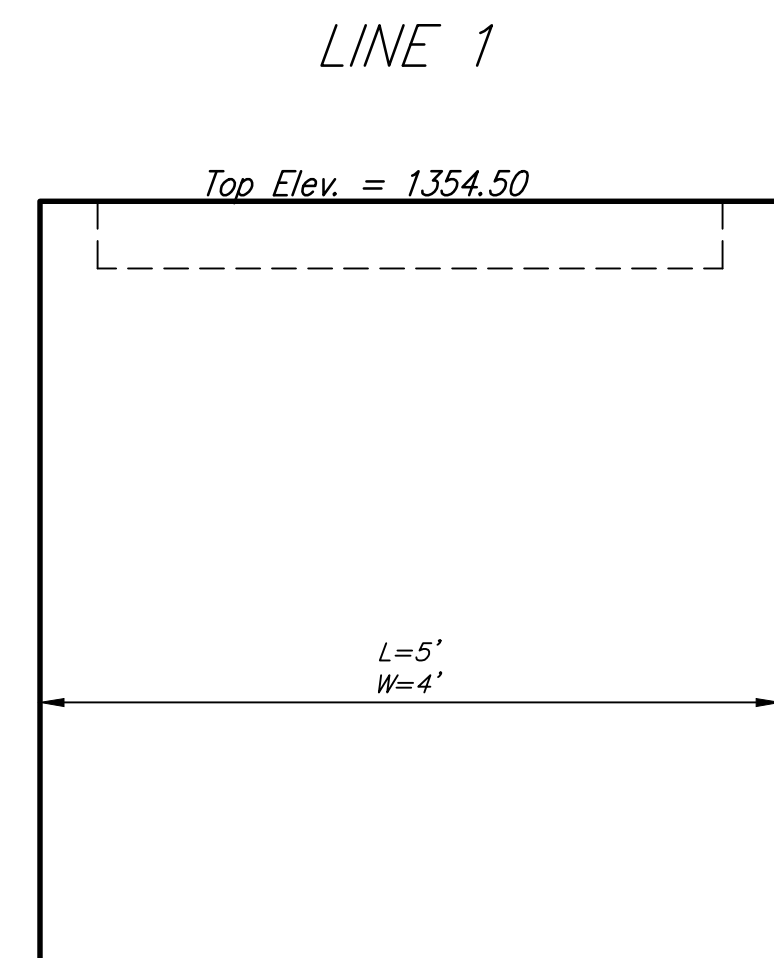
The top of the manhole shall be sloped slightly to approximately fit the ground line or other conditions as directed by the Engineer.

The grate shall be fabricated from standard or commercial grade structural steel and black steel pipe. The unit shall be hot dipped, galvanized after fabrication, in accordance with ASTM A123 except the weight of coating shall average not less than 2.0 ounces per square foot of actual surface and no individual test shall show less than 1.8 ounces of coating per square foot of actual surface area.

\*\* Quantities shown are for information only.



SECTION A-A



	<b>Inlet Manhole</b> Storm Water Sewer Improvements	
	<small>Baughman Company, P.A. 315 Ellis St. Wichita, KS 67211 P 316-263-2771 F 316-262-0149          ENGINEERING   SURVEYING   PLANNING   LANDSCAPE ARCHITECTURE</small>	
PROJECT NUMBER	DESIGN Staff	DRAWN Staff
REVISIONS 3/01/95 <small>Baughman Company Revision</small>	APPROVED 01/14	DATE 01/14
SCALE None	SHEET <b>16 OF 40</b>	

SWD\_Details.dwg 12-11-E840