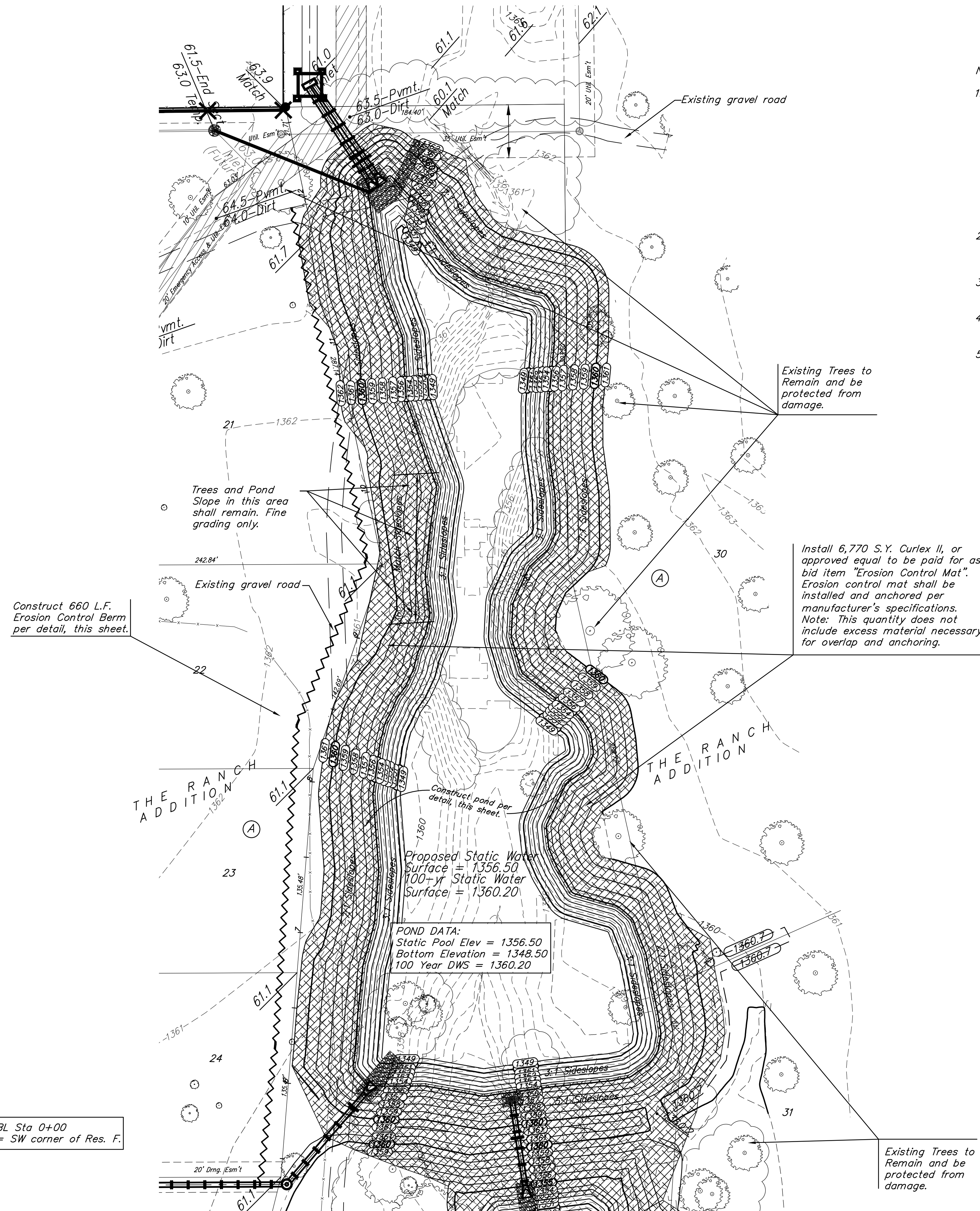


**EROSION CONTROL PLAN LEGEND**  
(Installation Details Found in the SWP2 Plan)

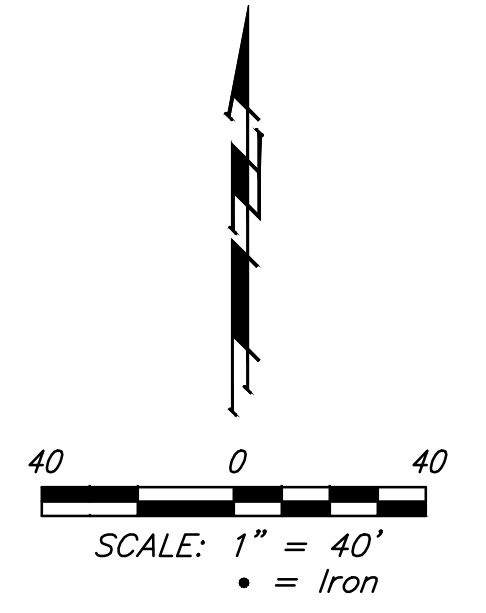
	- DROP INLET PROTECTION
	- CURB INLET PROTECTION
	- DITCH CHECKS
	- SILT FENCING
	- CUT-OFF TRENCH
	- BACK OF CURB PROTECTION
	- EROSION CONTROL MAT
	- TEMPORARY DITCH

NO SCALE



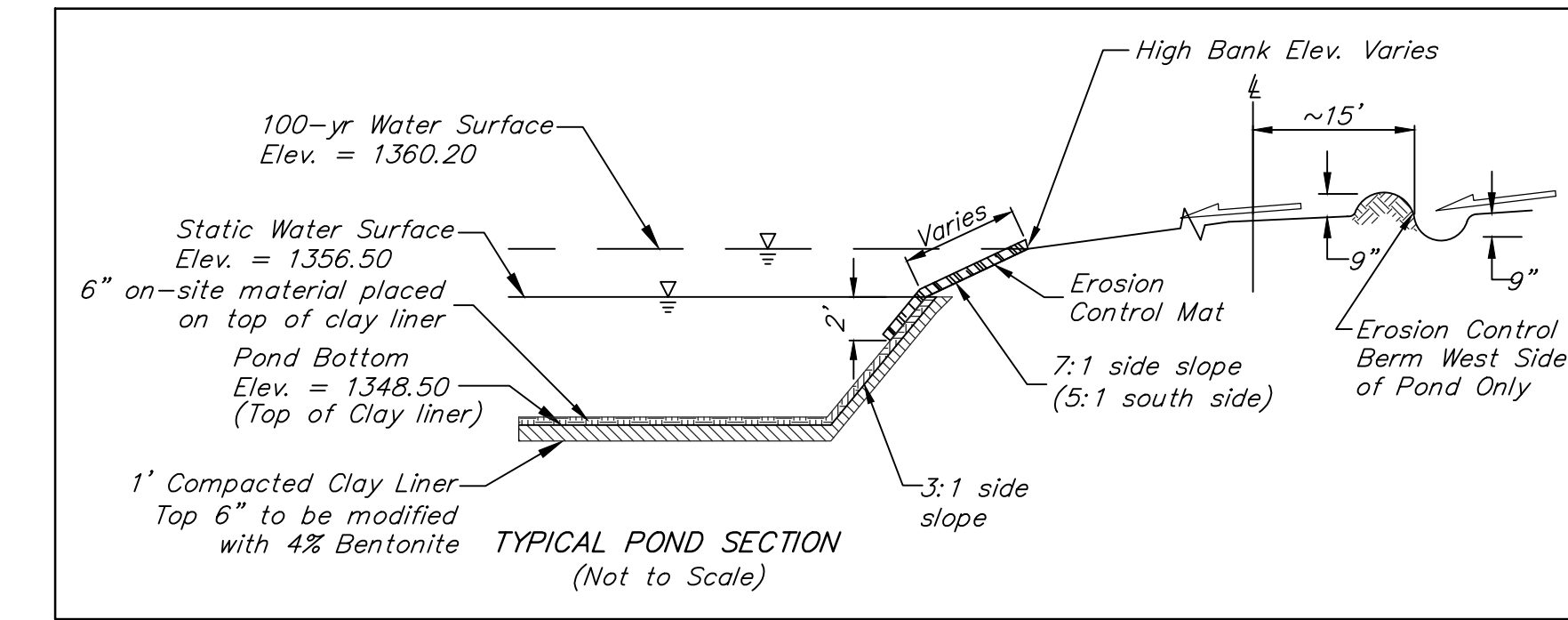
**NOTES:**

- Pond bottom and side slopes below static pool elevation shall be over-excavated 18" and a 12" clay liner shall be compacted to 95% std. density. The top 6" of the clay liner shall be modified with Wyoming Bentonite Clay at a rate of 4%. The plasticity index (P.I.) shall be at least 30. The compaction and P.I. shall be verified during construction. 6" of on-site material shall be distributed on top of the clay line below the static pool elevation. P.I. determination and compaction testing shall be arranged by the contractor at the request of the inspector. All costs for liner material, manipulation, compaction, testing, etc to be included in lump sum bid item, "Pond Sealing". All costs associated with Pond Construction including stripping top soil, excavation, shaping, compaction, hauling excess material, etc. shall be included in the bid item "Excavation".
- Excess earthwork, if any, shall be stockpiled at a location on-site as determined by the Engineer. Excess excavation may be used to build on-site berms at locations indicated by the Engineer.
- All areas disturbed by construction (except within street R/W) shall be seeded as indicated on Clearing Plan.
- Install Erosion Control Mat (Curlex II or approved equal) from 2' below the water surface to top bank. To be paid for as bid item "Erosion Control Mat".
- Contractor to strip top 4"-6" of soil within disturbed areas of Res. "F" & "G" and street reserves before mass grading and stockpile. Top soil stockpile to be redistributed over Reserve "F" & "G" above water elevation prior to seeding.



NORTH POND (Static = 1356.5)			
STAGE	INFLOW	OUTFLOW	ELEVATION
2 yr	65 cfs	19 cfs	1358.0
10 yr	118 cfs	51 cfs	1358.7
100 yr	202 cfs	80 cfs	1360.2

NORTH POND	
ELEVATION	AREA (sq ft)
1356.5	77500
1357	85400
1358	97000
1359	110310
1360	124000
1361	130000

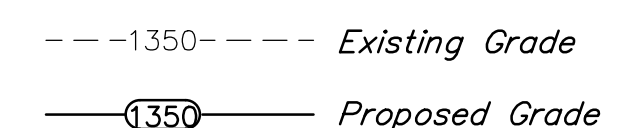


**POND DATA:**  
 Static Pool Elev = 1356.50  
 Bottom Elevation = 1348.50  
 100 Year DWS = 1360.20

**EARTH WORK TOTALS (Unadjusted, Pond "A" Only)**

	C.Y. Excavation	C.Y. Fill
Pond Construction	23,530	500

Earthwork quantities do not include correction factors and are for reference only.



BL Sta 0+00  
= SW corner of Res. F.

**Baughman** The Ranch Addition  
**POND PLAN "A"**  
 STORM WATER DRAIN #391

Baughman Company, P.A. 315 Ellis St., Wichita, KS 67211 P 316-263-7771 F 316-262-0149  
 ENGINEERING | SURVEYING | PLANNING | LANDSCAPE ARCHITECTURE

PROJECT NUMBER 468-84291	DESIGN AEG	DRAWN JAK/TMS
REVISIONS:	APPROVED	DATE 01/14
	SCALE Noted	SHEET 23 OF 40

E:\Projects\The Ranch\_1208P899\Engineering\SWD\_1211E840\SWD PLANS.dwg 12-11-E840