

- NOTES:
1. Pond bottom and side slopes below static pool elevation shall be over-excavated 18" and a 12" clay liner shall be compacted to 95% std. density. The top 6" of the clay liner shall be modified with Wyoming Bentonite Clay at a rate of 4%. The plasticity index (P.I.) shall be at least 30. The compaction and P.I. shall be verified during construction. 6" of on-site material shall be distributed on top of the clay line below the static pool elevation. P.I. determination and compaction testing shall be arranged by the contractor at the request of the inspector. All costs for liner material, manipulation, compaction, testing, etc to be included in lump sum bid item, "Pond Sealing". All costs associated with Pond Construction including stripping top soil, excavation, shaping, compaction, hauling excess material, etc. shall be included in the bid item "Excavation".
 2. Excess earthwork, if any, shall be stockpiled at a location on-site as determined by the Engineer. Excess excavation may be used to build on-site berms at locations indicated by the Engineer.
 3. All areas disturbed by construction (except within street R/W) shall be seeded as indicated on Clearing Plan.
 4. Install Erosion Control Mat (Curlex II or approved equal) from 2' below the water surface to top bank. To be paid for as bid item "Erosion Control Mat".
 5. Contractor to strip top 4"-6" of soil within disturbed areas of Res. "F" & "G" and street reserves before mass grading and stockpile. Top soil stockpile to be redistributed over Reserve "F" & "G" above water elevation prior to seeding.

EROSION CONTROL PLAN LEGEND
(Installation Details Found in the SWP2 Plan)

- DROP INLET PROTECTION
- CURB INLET PROTECTION
- DITCH CHECKS
- SILT FENCING
- CUT-OFF TRENCH
- BACK OF CURB PROTECTION
- EROSION CONTROL MAT
- TEMPORARY DITCH

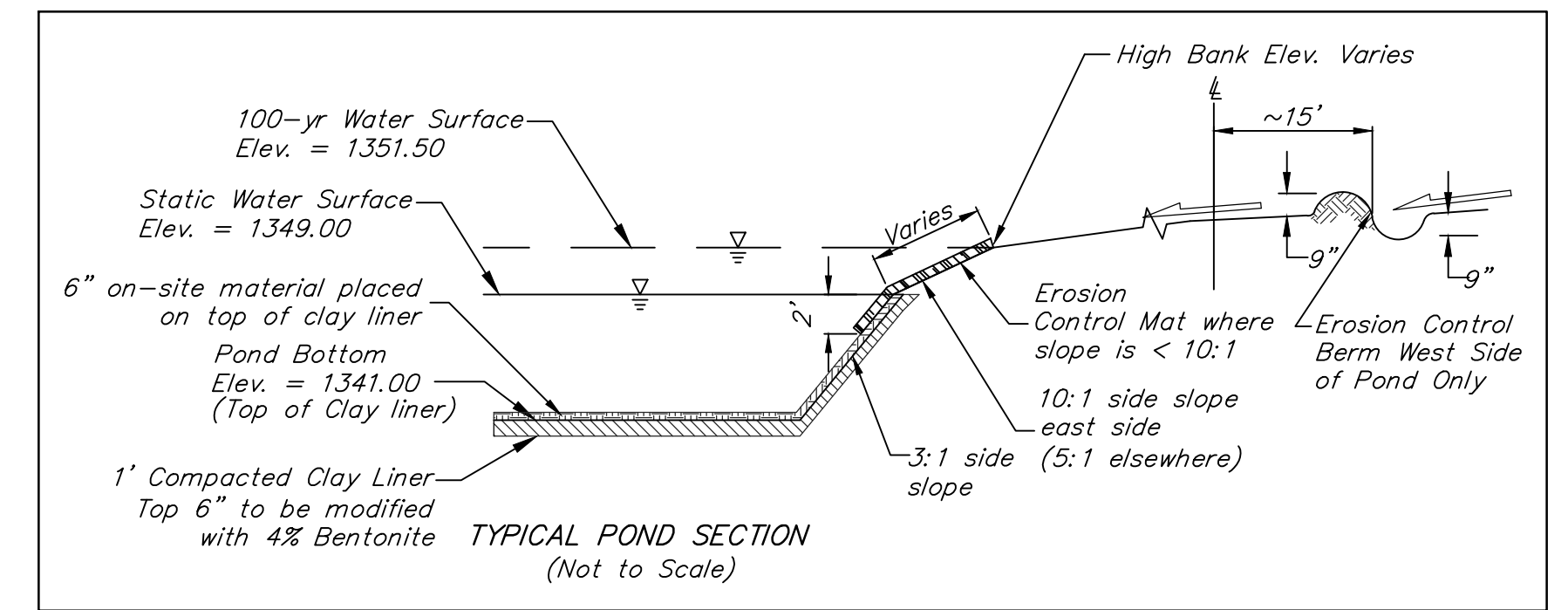
NO SCALE

SOUTH POND (Static = 1349.0)

STAGE	INFLOW	OUTFLOW	ELEVATION
2 yr	55 cfs	24 cfs	1350.3
10 yr	105 cfs	67 cfs	1351.0
100 yr	189 cfs	114 cfs	1351.5

SOUTH POND

ELEVATION	AREA (sq ft)
1349	134000
1350	143700
1351	153700
1352	164000
1353	174400
1354	185000

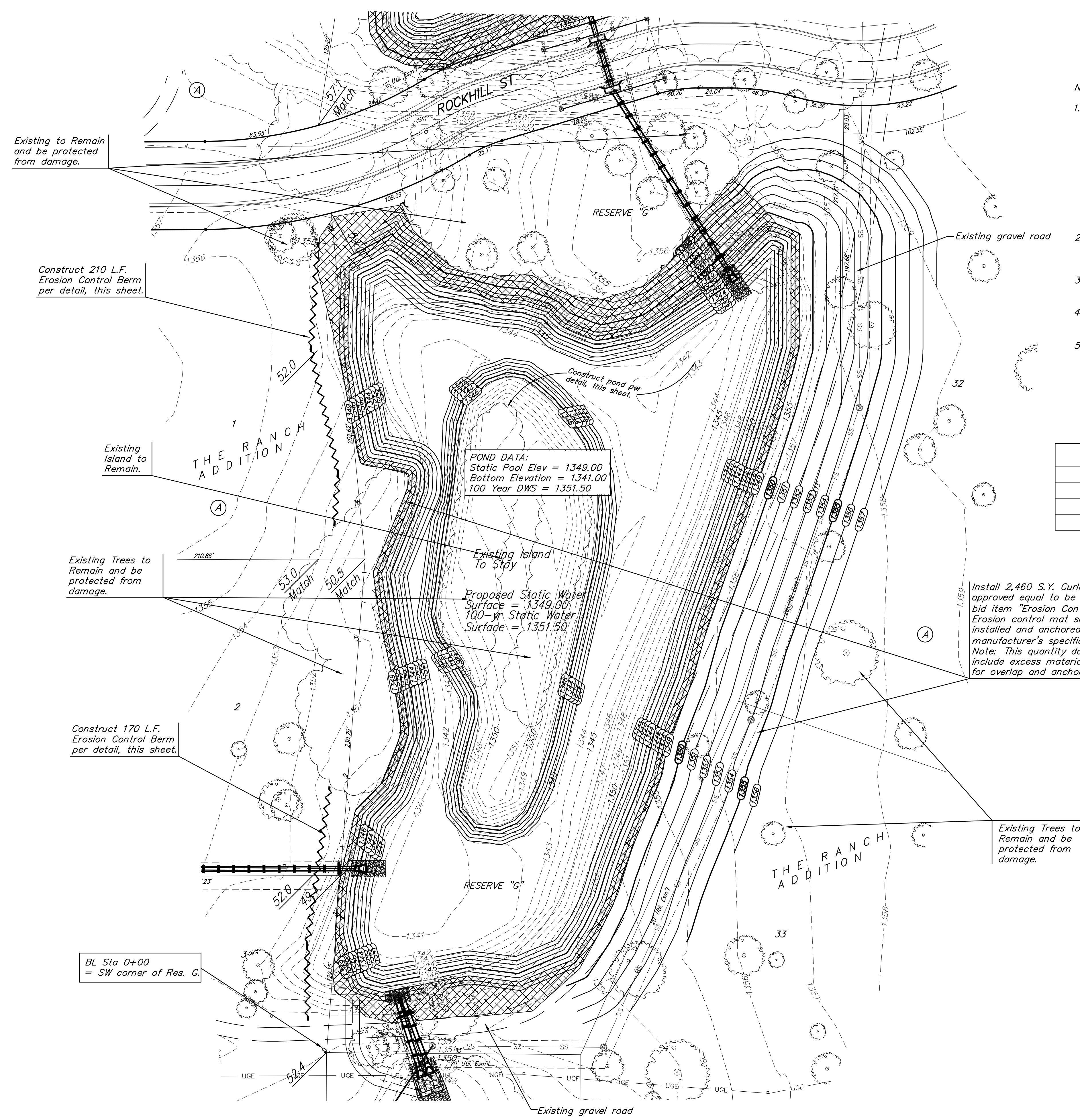


EARTH WORK TOTALS (Unadjusted, This Pond Only)

	C.Y. Excavation	C.Y. Fill
Pond Construction	18,590	160

Earthwork quantities do not include correction factors and are for reference only.

---1350--- Existing Grade
 —1350— Proposed Grade



Baughman The Ranch Addition
POND PLAN "C"
 STORM WATER DRAIN #391

Baughman Company, P.A. 315 Ellis St., Wichita, KS 67211 P 316-262-2771 F 316-262-0149
 ENGINEERING | SURVEYING | PLANNING | LANDSCAPE ARCHITECTURE

PROJECT NUMBER: 468-84291
 DESIGN: AEG
 DRAWN: JAK/TMS

APPROVED: [Signature]
 DATE: 01/14

SCALE: Noted
 SHEET: 25 OF 40

E:\Projects\The Ranch_1208P899\Engineering\SWD_1211E840\SWD PLANS.dwg 12-11-E840