

### GENERAL NOTES

- UNLESS SHOWN OR STATED OTHERWISE ON THESE DRAWINGS, MATERIALS AND CONSTRUCTION SHALL BE IN ACCORDANCE WITH CITY OF WICHITA STANDARD SPECIFICATIONS.
- CONTRACTOR WILL BE REQUIRED TO PROVIDE A MINIMUM ADVANCE NOTICE OF SEVENTY-TWO (72) HOURS TO UTILITY COMPANIES PRIOR TO STARTING ANY EXCAVATION AS FOLLOWS:
  - KANSAS ONE-CALL 1-800-344-7233 or 687-2470 (LOCAL WICHITA)

THE CONTRACTOR MUST NOTIFY THE FOLLOWING IN CASE OF AN EMERGENCY:

  - AT&T (TELEPHONE) 800-870-8390
  - COX COMMUNICATIONS (CABLE) 262-0661
  - KANSAS GAS SERVICE (GAS) 832-3101
  - CITY OF WICHITA WATER & SEWER 262-8000
  - WESTAR (ELECTRIC) 383-8600
  - BLACK HILLS ENERGY (GAS) 800-303-0357
- THE CONTRACTOR SHALL BE RESPONSIBLE FOR PRESERVING PROPERTY IRONS. THE CONTRACTOR WILL BE REQUIRED TO RE-ESTABLISH ANY PROPERTY IRONS WHICH ARE DAMAGED OR DESTROYED BY HIS CONSTRUCTION OPERATIONS. SUCH IRONS SHALL BE RE-ESTABLISHED BY A LICENSED LAND SURVEYOR IN ACCORDANCE WITH STATE LAWS.
- EXISTING UTILITIES AND THEIR LOCATIONS, AS SHOWN ON THE PLANS REPRESENT THE BEST INFORMATION OBTAINABLE FOR DESIGN. LOCATION INFORMATION HAS BEEN OBTAINED FROM THE VARIOUS UTILITY COMPANIES AND IS EITHER FROM COMPANY RECORD DRAWINGS OR COMPANY PROVIDED FIELD LOCATIONS. THE PLAN LOCATIONS SHOWN ARE NOT GUARANTEED. ADDITIONAL EXISTING UTILITIES MAY ALSO BE ENCOUNTERED.
- RUBBLE FROM THE REMOVAL OF MISCELLANEOUS STRUCTURES AND EXCESS EXCAVATION WHICH IS TO BE WASTED SHALL BE DISPOSED OF ON SITES TO BE PROVIDED BY THE CONTRACTOR. THESE SITES SHALL BE APPROVED BY THE ENGINEER AS TO SUITABILITY, APPEARANCE AND SITE LOCATION. LOCATIONS THAT, IN THE OPINION OF THE ENGINEER, WILL LEAVE AN UNSIGHTLY APPEARANCE WILL NOT BE APPROVED. ALL DISPOSAL SITES MUST BE APPROVED BY THE KANSAS DEPARTMENT OF HEALTH AND ENVIRONMENT. MATERIAL EITHER STOCKPILED OR DISPOSED OF IN A FLOOD PLAIN WOULD REQUIRE A KANSAS STATE BOARD OF AGRICULTURE PERMIT. ANY MATERIAL DUMPED IN WATERS OF THE UNITED STATES OR WETLANDS IS SUBJECT TO U.S. CORPS OF ENGINEERS PERMITTING REGULATIONS. ANY MATERIAL BURIED OR STOCKPILED BEYOND APPROVED CONSTRUCTION LIMITS WOULD REQUIRE ADDITIONAL ARCHAEOLOGICAL INVESTIGATIONS UNLESS BURIED IN A PREVIOUSLY APPROVED BORROW LOCATION.
- COST OF EXCAVATION, HAULING, AND DUMPING OF EXCESS EXCAVATION SHALL BE SUBSIDIARY TO THE PROJECT.
- A PORTION OF EXCESS EXCAVATED MATERIAL SHALL BE MOUNDED AROUND MANHOLES WHICH EXTEND MORE THAN ONE (1) FOOT ABOVE THE EXISTING GROUND. SUCH MOUNDS SHALL BE CONSTRUCTED WITH A SIX (6) FOOT DIAMETER FLAT TOP WITH 4 TO 1 SIDE SLOPES DOWN TO THE ORIGINAL GROUND. THE ELEVATION OF THE FLAT TOP OF THE MOUND SHALL BE 0.4 FOOT BELOW THE TOP OF THE MANHOLE.
- ALL STUBS AND PLUGGED PIPES SHALL BE LOCATED WITH GREEN PLASTIC TAPE IN THE SAME MANNER AS RISERS.
- CONNECTING TO EXISTING MANHOLES: PRIOR TO LAYING SEWER LINES USING EXISTING STUBS IN EXISTING MANHOLES, THE CONTRACTOR SHALL EXPOSE AND VERIFY THE ELEVATION, GRADE AND ALIGNMENT OF EXISTING STUBS AND NOTIFY THE ENGINEER OF ANY DEVIATION FROM THE PLAN. WHERE CONNECTION TO AN EXISTING MANHOLE THAT DOES NOT HAVE AN EXISTING STUB OR THE STUB IS UNUSABLE DUE TO ELEVATION GRADE OR ALIGNMENT, THE CONTRACTOR SHALL BORE CUT INTO EXISTING MANHOLE WALL TO MAKE CONNECTION USING APPROVED WATER STOP GASKET, AND RESHAPE THE EXISTING MANHOLE INVERT TO PROVIDE SMOOTH FLOW. THE COST OF CONNECTING TO EXISTING MANHOLES IS INCIDENTAL TO THE PROJECT.
- TREES AND SHRUBS IN PUBLIC RIGHT-OF-WAY WHICH ARE IN DIRECT CONFLICT WITH PROPOSED NEW CONSTRUCTION SHALL BE REMOVED BY THE CONTRACTOR WITH THE ENGINEER'S APPROVAL. TREES AND SHRUBS WHICH ARE NOT IN DIRECT CONFLICT WITH PROPOSED NEW CONSTRUCTION SHALL BE SAVED AND PROTECTED FROM DAMAGE.
- PORTIONS OF THE WORK ON THIS PROJECT ARE IN PROXIMITY TO EXISTING UNDERGROUND UTILITIES AND ABOVE GROUND UTILITY APPURTENANCES, AS WELL AS WITHIN DEVELOPED LOTS WITH FENCES AND GRASS. THE CONTRACTOR SHALL CONTACT EACH AFFECTED UTILITY COMPANY AND SHALL ACCOMMODATE/SUPPORT UTILITY FACILITIES AS REQUIRED AND RE-ESTABLISH GRASSED AREA DISTURBED BY CONSTRUCTION WITH THE SAME TYPE OF VEGETATION CURRENTLY ESTABLISHED. THE COST OF UTILITY ACCOMMODATION SHALL NOT BE A PAY ITEM, BUT WILL BE CONSIDERED SUBSIDIARY TO THE COST OF INSTALLING SANITARY SEWER PIPE. THE COST OF REMOVAL AND REPLACEMENT OF EXISTING FENCES AND VEGETATION SHALL NOT BE A PAY ITEM, BUT WILL BE CONSIDERED SUBSIDIARY TO THE COST OF SITE CLEARING AND RESTORATION.
- SANITARY SEWER NOTES DIRECTLY RELATED TO LOT 5, BLOCK A, AUBURN HILLS 9TH ADDITION (13509 LINKS STREET):
  - COORDINATE WORK WITHIN THIS PROPERTY WITH THE HOMEOWNER WELL IN ADVANCE OF CONSTRUCTION.
  - CONTRACTOR SHALL EXERCISE CAUTION WHEN REMOVING/REPLACING THE ORNAMENTAL IRON FENCE.
  - CONTRACTOR SHALL MAKE CORRECTIONS TO LAWN IRRIGATION SYSTEM AND ANY OTHER PROPERTY DAMAGE AS A RESULT OF CONSTRUCTION.
  - ALL LAWN/TURF AREAS DISTURBED BY CONSTRUCTION OF THE PROPOSED IMPROVEMENTS SHALL BE RESTORED WITH THE SAME GRASS/SOD AS EXISTING. RESTORATION OF THE DISTURBED AREAS SHALL INCLUDE, BUT NOT BE LIMITED TO TOP SOIL PREPARATION, SEEDING, MULCH AND/OR RE-SEEDING. ALL SEEDING/SODDING WORK SHALL BE IN ACCORDANCE WITH THE CITY OF WICHITA STANDARD SPECIFICATIONS AND THE CITY OF WICHITA ADMINISTRATIVE REGULATION NO. AR78 WHICH GOVERNS CLEANUP AND RESTORATION OR REPLACEMENT FOLLOWING CONSTRUCTION. ALL COSTS FOR THIS WORK SHALL BE SUBSIDIARY TO THE LUMP SUM PRICE BID FOR "SITE RESTORATION".

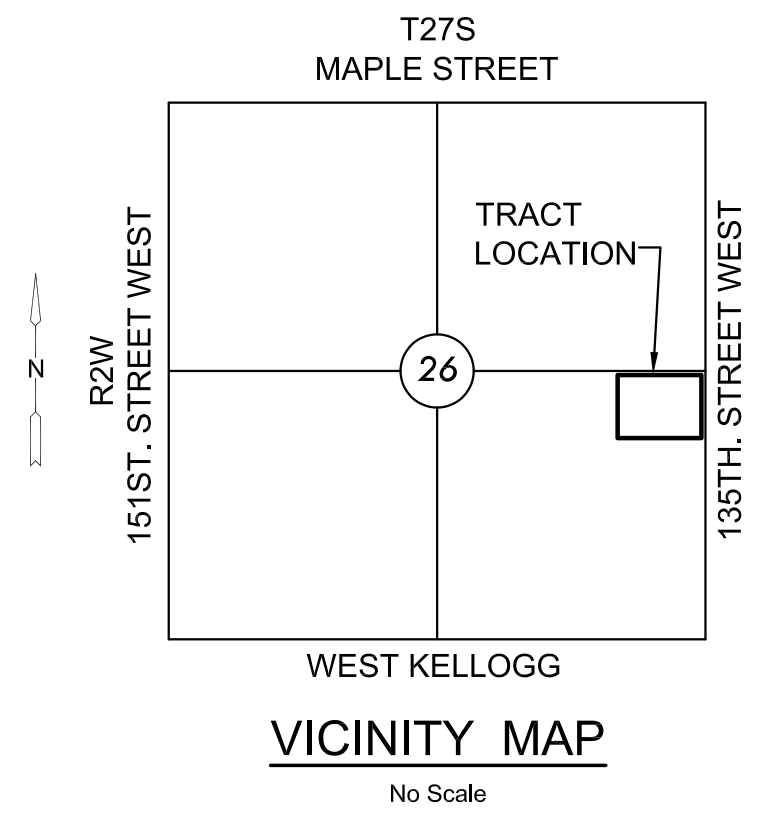
# SANITARY SEWER TO SERVE UNPLATTED TRACT - 135TH ST. W

LATERAL 61, CIS  
PROJECT NO. 468-84886

THE CITY OF WICHITA, KANSAS  
GARY JANZEN, P.E. - CITY ENGINEER

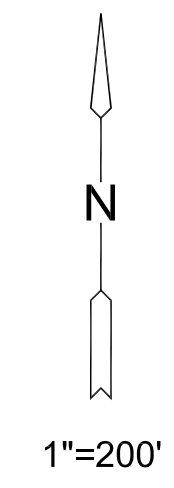
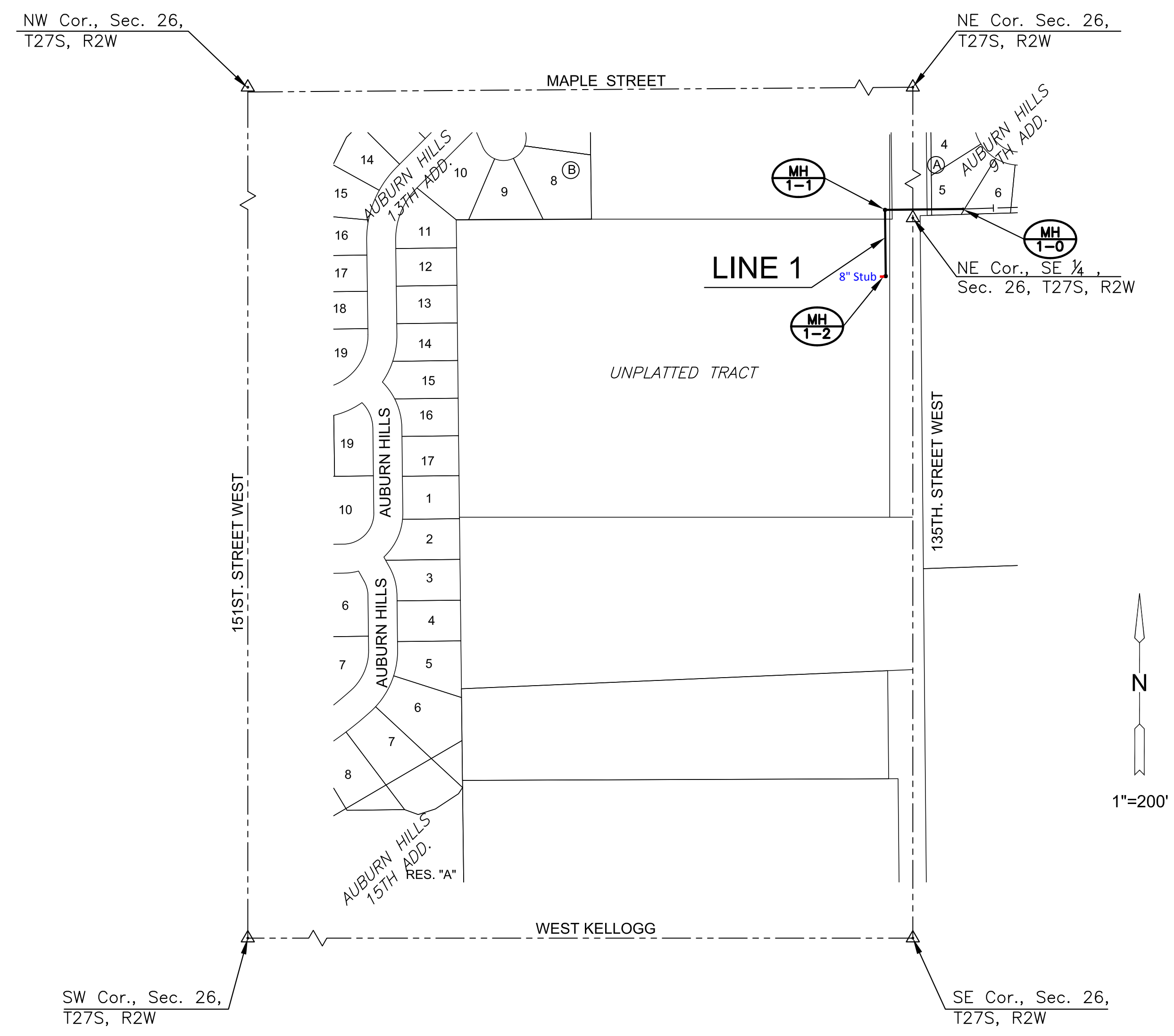
OCA NO. 744352

Dondlinger & Sons - Contractor  
G. Baalman - City of Wichita, Field Project Engineer  
J. Koleczek - City of Wichita, Inspector  
As-built  
Stub  
Release Date: 03/21/2014  
pdf: APRosas 03/26/2014



### INDEX TO DRAWINGS

SHEET NO.	DESCRIPTION
1	TITLE SHEET
2	DETAILS
3	LINE 1
4-8	BMP DETAILS



SANITARY SEWER PLANS FOR  
**UNPLATTED TRACT - 135TH ST. W**  
 LATERAL 61, CIS

©2013 MKEC Engineering All Rights Reserved  
www.mkec.com  
These drawings and their contents, including, but not limited to, all concepts, designs, & ideas are the exclusive property of MKEC Engineering (MKEC), and may not be used or reproduced in any way without the express consent of MKEC.

TITLE	
PROJECT NO.	468-84886
DATE	AUGUST 2013
SCALE	AS SHOWN
DESIGNED	DRAWN
DFL	KKL
CHECKED	JAG
#	###/###
NO.	REVISION
	DATE
SHEET NO.	
1 OF 8	

