

Street Paving For FORESTVIEW to serve

LIBERTY PARK 3RD ADDITION - PHASE 2B

Forestview from 25.89' south of the north line of Lot 9, Block A, Liberty Park 3rd, south to the south line of Lot 19, Block A, Liberty Park 3rd
Lost Creek from the south line of Lot 19, Block A, Liberty Park 3rd, east to east line of Lot 37, Block C, Liberty Park 3rd

CITY OF WICHITA, KANSAS

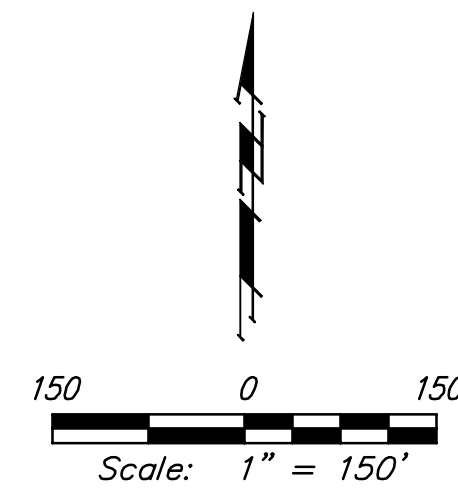
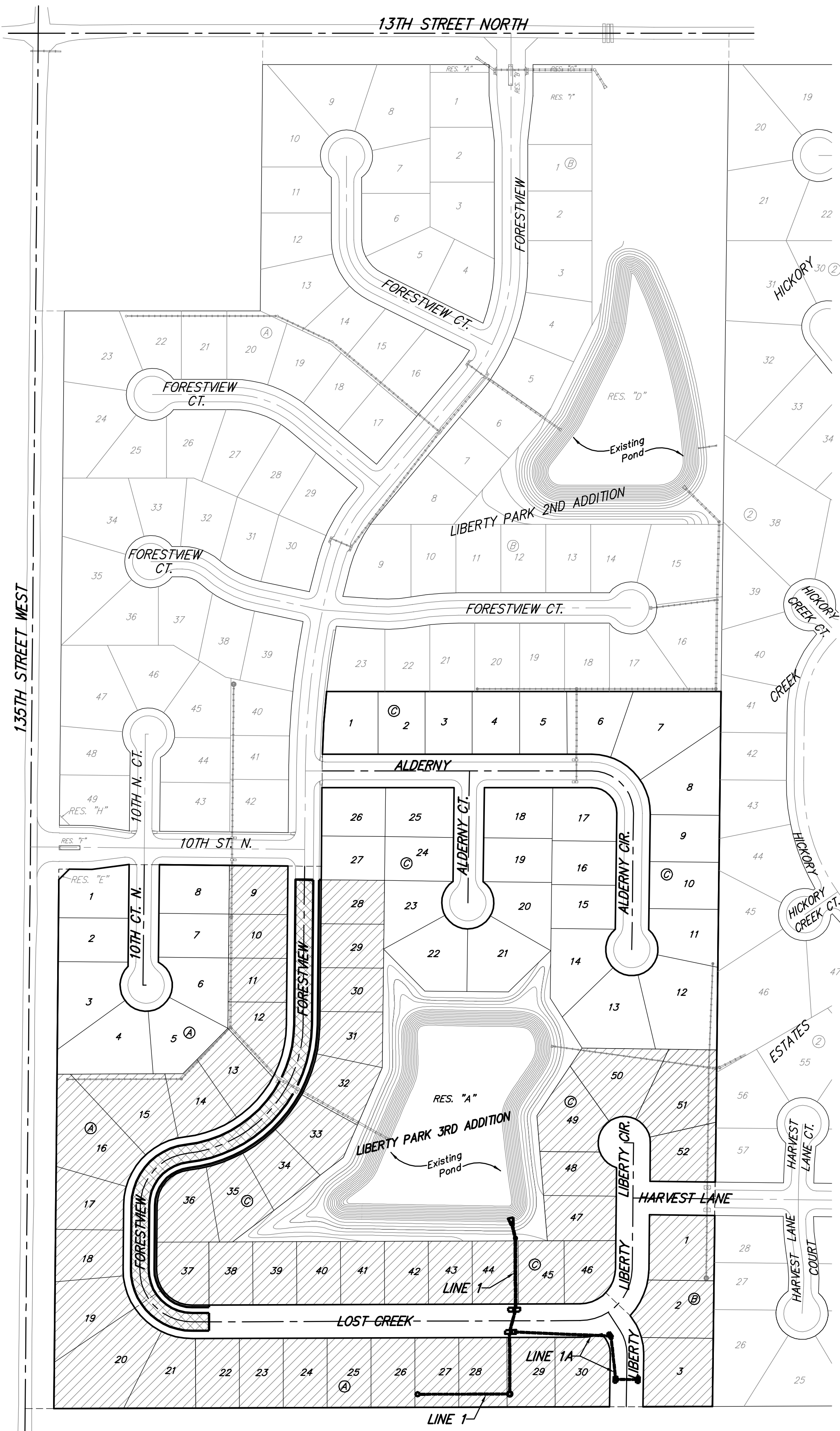
Gary Janzen, P.E. City Engineer

Project Number

472-84069

O.C.A. Number

766305



Benchmarks

"□" Cut in top of curb south end of east curb return 10th St. & Forestview adjacent to Lot 9, Block A, Liberty Park 3rd Addition
Elev. = 1355.83 (City Datum)

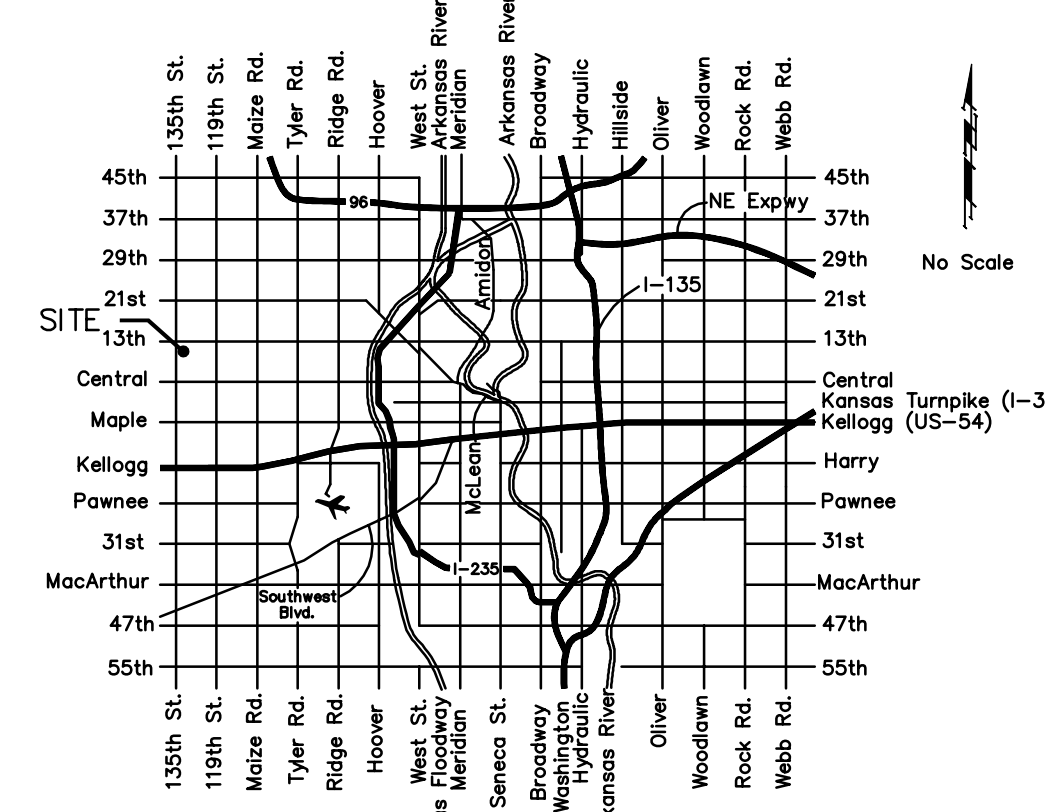
"□" Cut in top of curb 10' east of end of existing pavement adjacent to Lot 32, Block C, Liberty Park 3rd Addition
Elev. = 1351.61 (City Datum)

C.O.W. Benchmark Disk. 56' E and 55' N of \odot 135th St. W. & 13th St. N.
Elev. = 167.83 (City Datum)

C.O.W. Benchmark Disk. 1/2 mile south of 13th St. 39' east of \odot 135th St. 18' south of hedge row.
Elev. = 159.71 (City Datum)

Sheet Index

Title Sheet	1
35' Pavement Detail	2
Sign Detail	3
Miscellaneous Details	4
Forestview / Lost Creek	5-7
SWS Line 1 & SWS Line 1A	8-9
Curb Inlet Pavement Underdrain Detail	10
Type 1A Inlet Detail	11
Precast Conc. Manhole Detail	12
Manhole/Inlet Frame & Cover Detail	13
Backyard Inlet Detail	14
Headwall Detail	15
Erosion Control/Esmt. Grading Plan	16
Erosion Control BMP Details	17-20
Coordinate Sheet	21
Earthwork Cross Sections	22-23
Copy of Plat	24

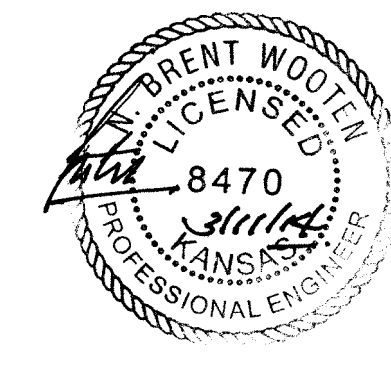


Vicinity Map

Project Earthwork Totals	Excavation	Loose Fill	Compacted Fill
Easement Grading	254	14	-
Street (R/W)	1,667	235	159
Project Total	1,921	249	159
Total Project Length			
1,100 L.F. = 0.21 Miles			

GENERAL NOTES:

- Contractor will be required to provide notice to utility companies a minimum of forty-eight (48) hours prior to any excavation, as follows:
Kansas One-Call 687-2470
The Contractor must notify the following in case of an emergency:
Cox Communications 262-4270
Kansas Gas Service 1-888-482-4950
Westar Energy 383-8650
Aquila Energy 1-800-303-0357
SBC 268-2245
City of Wichita Water Dept. 268-4563
City of Wichita Sewer Maint. 268-4024
City of Wichita Storm Sewer Maint. 268-4090
City of Wichita Traffic Maint. 268-4034
Conoco Phillips Pipeline Co. 1-877-267-2290
Southern Star Pipeline Co. 529-6600
Kinder-Morgan Pipeline Co. 1-888-844-5658
- Utility service lines, poles, valve boxes, meters, and etcetera are to be adjusted as necessary by others prior to construction unless the plans specifically call for their adjustment by the Contractor or unless the plans specifically identify a utility to be adjusted by its owner during construction. Existing utilities and their location, as shown on the plans, represent the best information obtainable for design. The Contractor will be required to work around existing utilities within the right-of-way which do not conflict with proposed construction.
- Rubble from the removal of miscellaneous structures and excess excavation which is to be wasted shall be disposed of on sites to be provided by the Contractor. These sites shall be approved by the Engineer as to suitability, appearance and site location. Locations, in the opinion of the Engineer, that will leave an unsightly appearance will not be approved. All disposal sites must be approved by the Kansas Department of Health and Environment. Material either stockpiled or disposed of in a flood plain would require a Kansas State Board of Agriculture permit. Any material dumped in waters of the United States or wetlands is subject to U.S. Corps. of Engineers permitting regulations. Any material buried or stockpiled beyond approved construction limits would require additional archaeological investigations unless buried in a previously approved borrow location.
- Trees and shrubs in public right-of-way which are in direct conflict with proposed new construction shall be removed by the Contractor with the Engineer's approval. Trees and shrubs which are not in direct conflict with proposed new construction shall be saved and protected from damage.
- The Contractor shall give all property owners and/or tenants of developed property abutting the construction of this project a minimum of ten (10) days notice prior to start of construction.
- The Contractor shall be responsible for preserving property irons. The Contractor will be required to re-establish any property irons which are damaged or destroyed by his construction operations. Such irons shall be re-established by a licensed Land Surveyor in accordance with state laws.
- All existing and proposed erosion control measures including silt fencing, erosion control mat, straw bales, inlet barriers, and const. entrance shall be maintained throughout construction by the Contractor and until project is accepted by the City of Wichita. The on-site Engineer shall complete weekly reports on the status of erosion control measures. The Contractor shall be required to comply with maintenance and/or replacement of erosion control measures as determined by the on-site Engineer until project is accepted by City of Wichita.
- A saw cut of at least one-half the depth of existing surface courses or one-fourth the depth of the existing total pavement thickness shall be provided at locations where proposed construction abuts the existing surface course or pavement for which partial removal of that surface or pavement is required. Sawed joint to facilitate removal within three (3) feet of existing joints will not be permitted and for such instances the limits of removal shall extend to the existing joint. Such saw cuts will not be paid for directly and this cost shall be considered as subsidiary to the removal of the surface or pavement.
- All areas disturbed during construction shall be seeded at 300 lbs./acre with Rye Grass immediately following construction in that area. Contractor shall prepare ground per City of Wichita Specifications. All costs associated with seeding shall be included in the Lump Sum bid item "Seeding".
- The Contractor shall adjust valve boxes as necessary to match proposed grade. Cost to be included in bid item, "Site Restoration".
- Excess excavation shall remain on site and be spread evenly on lots outside of easements and R/W's.
- Limits of earthwork shall match existing ground elevations at the right-of-way line unless otherwise noted on the plans with a new finished grade elevation. When a new finished grade elevation is shown, the earthwork shall extend one foot beyond the right-of-way line and then slope up or down using permissible slopes to match the existing ground surface.
- Cross Sections reflect proposed grade after mass grading. Mass grading as-built topo was not available at time of street project finalization. Contractor of this project shall satisfy himself with the earthwork quantities as bid for "Excavation", "Compacted Fill", and "Easement Grading" prior to bidding. No additional payments or change orders for earthwork will be accepted.
- The Developer for this project is Paul E. Kelsey and may be reached at (316) 722-1077.



Baughman Company, P.A. 315 Ellis St. Wichita, KS 67211 P 316-262-7271 F 316-262-0149
ENGINEERING | SURVEYING | PLANNING | LANDSCAPE ARCHITECTURE

Proposed Streets: Benefit District: