

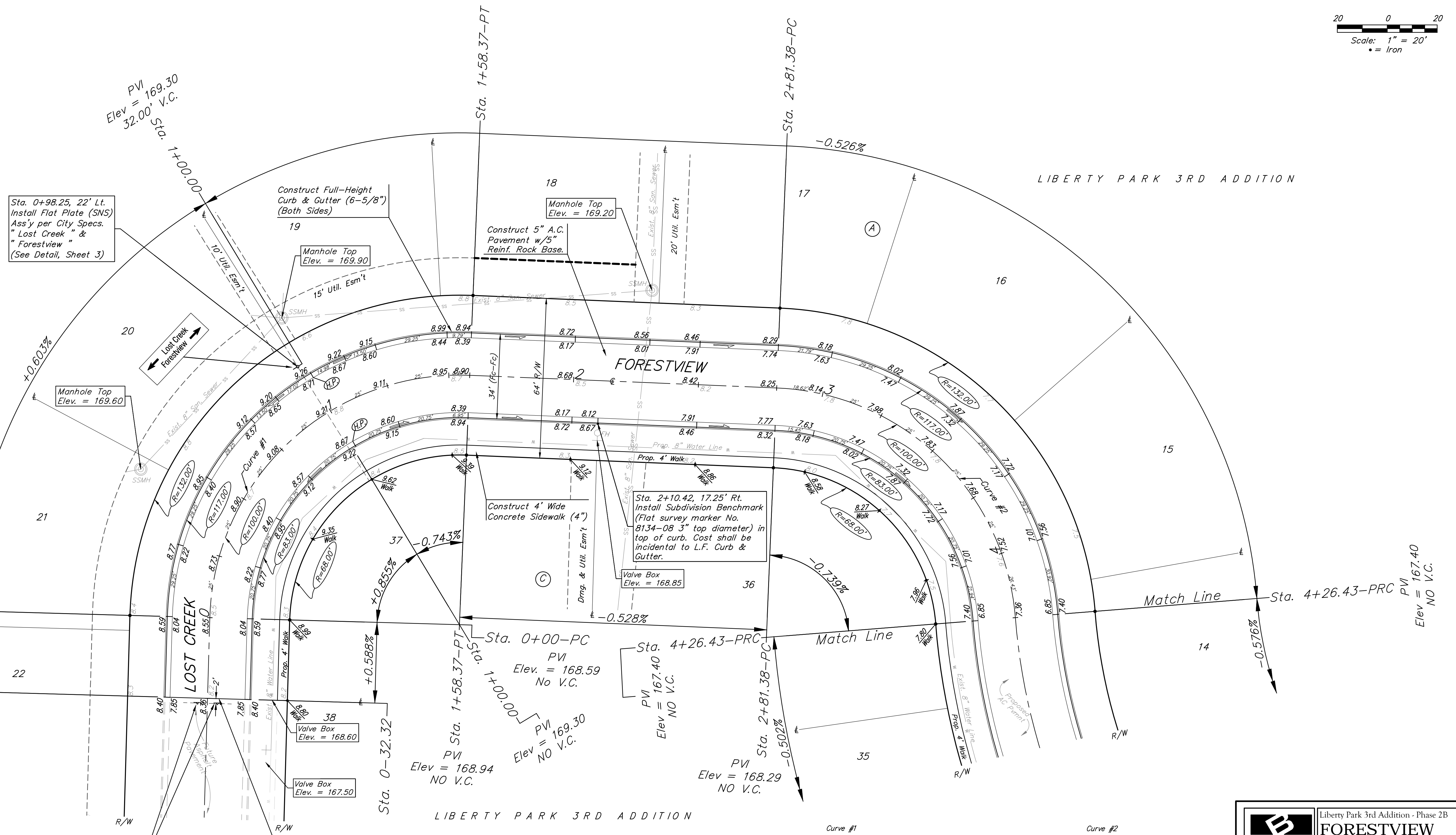
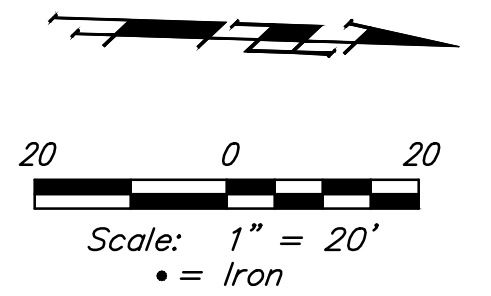
BENCHMARKS:

"□" Cut in top of curb south end of east curb return 10th St. & Forestview adjacent to Lot 9, Block A, Liberty Park 3rd Addition Elev. = 168.43 (City Datum)

"□" Cut in top of curb 10' east of end of existing pavement adjacent to Lot 52, Block C, Liberty Park 3rd Addition Elev. = 164.21 (City Datum)

C.O.W. Benchmark Disk. 56' E and 55' N of Q 135th St. W. & 13th St. N. Elev. = 167.83 (City Datum)

C.O.W. Benchmark Disk. 1/2 mile south of 13th St. 39' east of Q 135th St. 18' south of hedge row. Elev. = 159.71 (City Datum)



Sta. 0+98.25, 22' Lt. Install Flat Plate (SNS) Ass'y per City Specs. "Lost Creek" & "Forestview" (See Detail, Sheet 3)

Manhole Top Elev. = 169.60

Construct Full-Height Curb & Gutter (6-5/8") (Both Sides)

Manhole Top Elev. = 169.90

18 Manhole Top Elev. = 169.20

Construct 5" A.C. Pavement w/5" Reinf. Rock Base.

FORESTVIEW

Construct 4' Wide Concrete Sidewalk (4")

Sta. 2+10.42, 17.25' Rt. Install Subdivision Benchmark (Flat survey marker No. 8134-08 3" top diameter) in top of curb. Cost shall be incidental to L.F. Curb & Gutter.

Valve Box Elev. = 168.85

Match Line Sta. 4+26.43-PRC PVI = 167.40 NO V.C.

Sta. 0+00-PC

Sta. 0-32.32

Sta. 0+00-PC PVI Elev. = 168.59 NO V.C.

Sta. 1+58.37-PT PVI Elev. = 169.30 NO V.C.

Sta. 4+26.43-PRC PVI = 167.40 NO V.C.

Sta. 2+81.38-PC PVI Elev. = 168.29 NO V.C.

Sta. 0-32.32 PVI Elev. = 168.94 NO V.C.

Sta. 0-34.32, 4' Lt. & Rt. Install End of Road Markers (Red) as Shown. From Sta. 10+65.00, Sheet (See Detail, Sheet 7)

Sta. 0-32.32, Begin Construction of 5" A.C. Pavement w/5" Reinf. Rock Base and 4' Wide Concrete Sidewalk (4").

LIBERTY PARK 3RD ADDITION

Curve #1
Curve Data Based on Centerline
Rad. = 100' Delta = 90°44'22" Tangent = 101.30'
Arc = 158.37' L.C. = 142.33' Def./Pt. = 17.18876 Min.

Station	Arc	Face Chord Lengths		Defl.	Total Defl.
		8' Left	8' Right		
0+00.00	-	-	-	0°00'00"	0°00'00"
0+25.00	25.00'	31.17'	18.70'	7°09'43"	7°09'43"
0+50.00	25.00'	31.17'	18.70'	7°09'43"	14°19'26"
0+75.00	25.00'	31.17'	18.70'	7°09'43"	21°29'09"
1+00.00	25.00'	31.17'	18.70'	7°09'44"	28°38'53"
1+25.00	25.00'	31.17'	18.70'	7°09'43"	35°48'36"
1+50.00	25.00'	31.17'	18.70'	7°09'43"	42°58'19"
1+58.37	8.37'	10.46'	6.28'	2°23'52"	45°22'11"

Curve #2
Curve Data Based on Centerline
Rad. = 100' Delta = 83°06'28" Tangent = 88.64'
Arc = 145.05' L.C. = 132.66' Def./Pt. = 17.18879 Min.

Station	Arc	Face Chord Lengths		Defl.	Total Defl.
		8' Left	8' Right		
2+81.38	-	-	-	0°00'00"	0°00'00"
3+00.00	18.62'	23.24'	13.94'	5°20'03"	5°20'03"
3+25.00	25.00'	31.17'	18.70'	7°09'43"	12°29'46"
3+50.00	25.00'	31.17'	18.70'	7°09'44"	19°39'30"
3+75.00	25.00'	31.17'	18.70'	7°09'43"	26°49'13"
4+00.00	25.00'	31.17'	18.70'	7°09'43"	33°58'56"
4+25.00	25.00'	31.17'	18.70'	7°09'43"	41°08'39"
4+26.43	1.43'	1.79'	1.07'	0°24'35"	41°33'14"

Liberty Park 3rd Addition - Phase 2B
FORESTVIEW
STA. 0-32.32 to STA. 4+26.43

Baughman
ENGINEERING | SURVEYING | PLANNING | LANDSCAPE ARCHITECTURE

PROJECT NUMBER: 472-84069
DESIGN: JAK
APPROVED: AEG
SCALE: Noted
SHEET: 5 OF 24

REVISIONS:

DATE: 3/11/14
DRAWN: JAK