

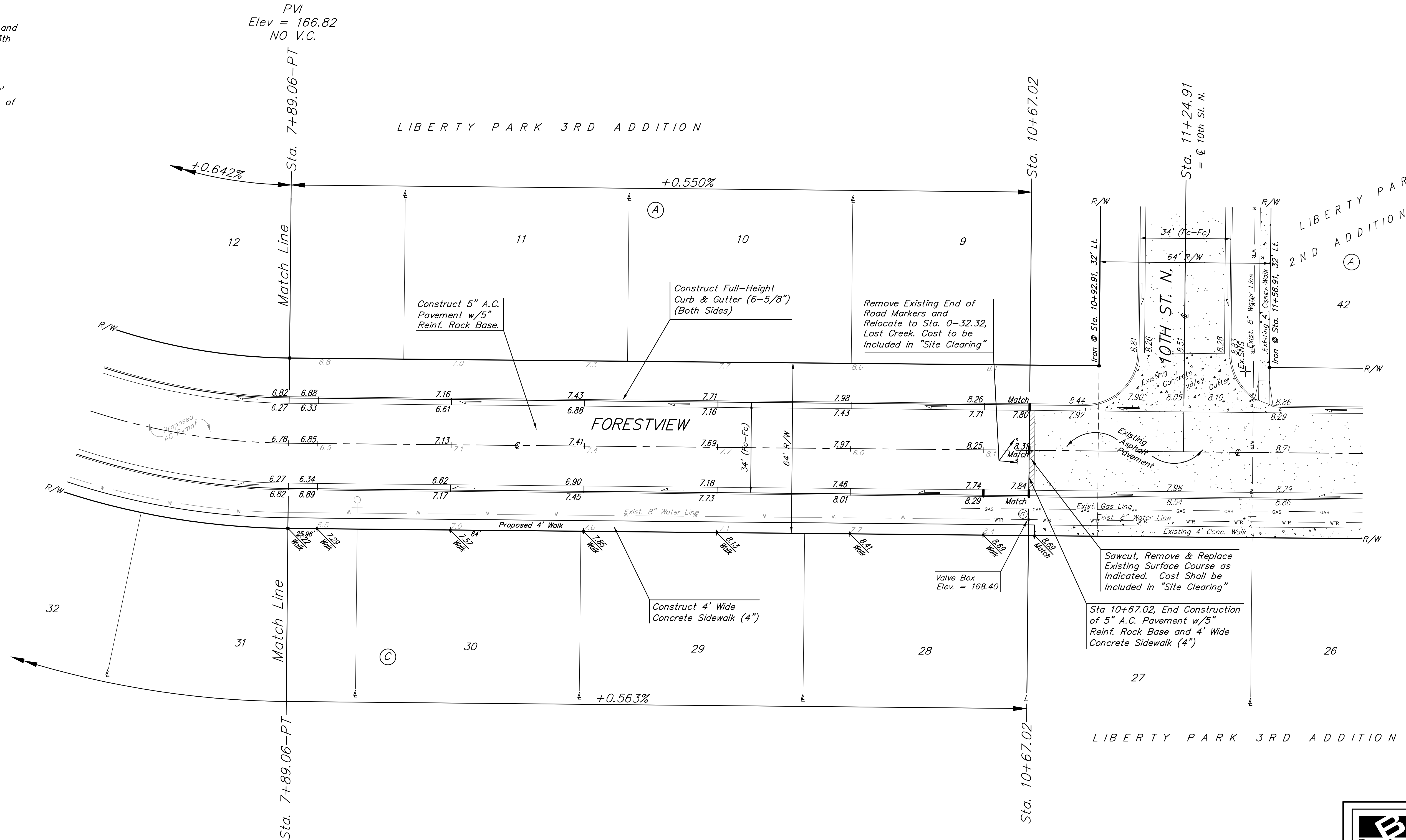
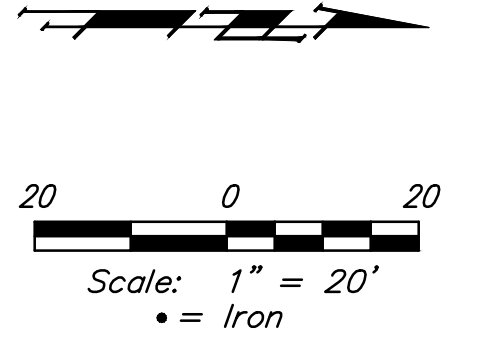
**BENCHMARKS:**

"□" Cut in top of curb south end of east curb return 10th St. & Forestview adjacent to Lot 9, Block A, Liberty Park 3rd Addition Elev. = 168.43 (City Datum)

"□" Cut in top of curb 10' east of end of existing pavement adjacent to Lot 52, Block C, Liberty Park 3rd Addition Elev. = 164.21 (City Datum)

C.O.W. Benchmark Disk. 56' E and 55' N of  $\odot$  135th St. W. & 13th St. N. Elev. = 167.83 (City Datum)

C.O.W. Benchmark Disk. 1/2 mile south of 13th St. 39' east of  $\odot$  135th St. 18' south of hedge row. Elev. = 159.71 (City Datum)



	Liberty Park 3rd Addition - Phase 2B	
	<b>FORESTVIEW</b> STA. 7+89.06 to STA.10+67.02	
Baughman Company, P.A. 315 Ellis St. Wichita, KS 67211 P 316-262-7271 F 316-262-0149 ENGINEERING   SURVEYING   PLANNING   LANDSCAPE ARCHITECTURE		
PROJECT NUMBER 472-84069	DESIGN JAK	DRAWN JAK
REVISIONS:	APPROVED AEG	DATE 3/11/14
SCALE Noted		SHEET <b>7 OF 24</b>