

**BENCHMARKS:**

"□" Cut in top of curb south end of east curb return 10th St. & Forestview adjacent to Lot 9, Block A, Liberty Park 3rd Addition Elev. = 168.43 (City Datum)

"□" Cut in top of curb 10' east of end of existing pavement adjacent to Lot 52, Block C, Liberty Park 3rd Addition Elev. = 164.21 (City Datum)

C.O.W. Benchmark Disk. 56' E and 55' N of Q 135th St. W. & 13th St. N. Elev. = 167.83 (City Datum)

C.O.W. Benchmark Disk. 1/2 mile south of 13th St. 39' east of Q 135th St. 18' south of hedge row. Elev. = 159.71 (City Datum)

Sta. 0+00, Line 1 Begin Construction of 30" RCP w/ End Section and 33 S.Y. Light Stone Rip-rap.

**POND DATA:**  
Bottom Elev. = 148.0 City Datum  
Static WS Elev. = 158.0 City Datum  
100-yr Design WS Elev. = 160.7 City Datum

**LIBERTY PARK 3RD ADDITION**

**CAUTION!**  
U/G Irrigation System In Area (not field verified). The Contractor will be required to repair any damage which may occur during construction. Contractor shall compact and regrade area and replace existing grass in this area "in kind" as necessary to restore areas within Res. "A" disturbed by construction to original condition.

Remove & replace existing 9" Stone Rip-rap only as necessary for SWS construction. Cost included in "Site Restoration"

Sta. 0+35.9, Line 1 Construct Std. Manhole (5' dia.) w/ Grated Lid Top Elev. = 162.40

**CAUTION!**  
8" San. Sewer Crossing

Sta. 1+71.1, Line 1 Const. Std. Type-1A Curb Inlet. (10' x 3') Top Elev. = 165.12

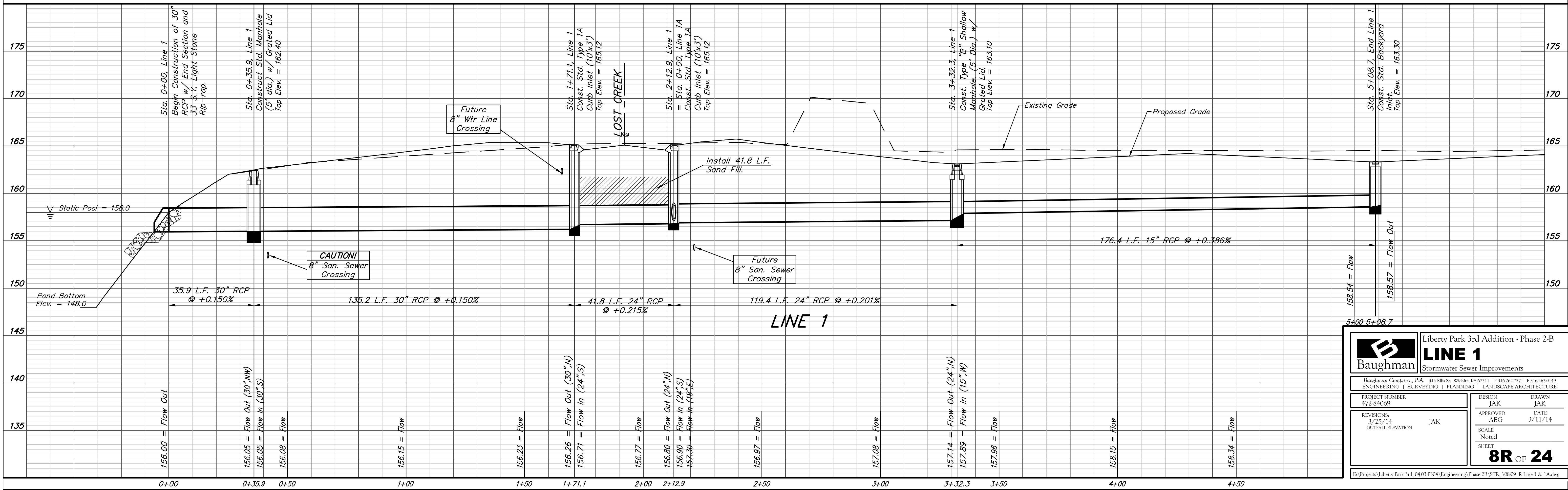
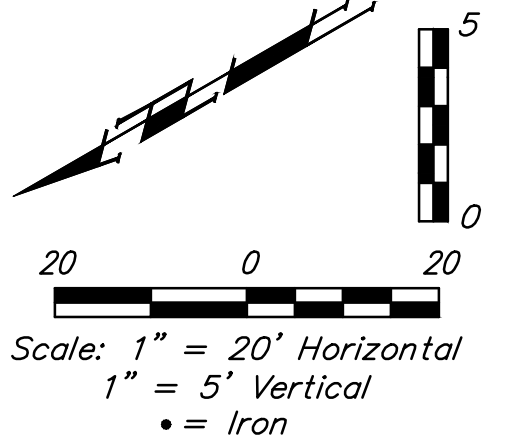
Sta. 2+12.9, Line 1 = Sta. 0+00, Line 1A Const. Std. Type-1A Curb Inlet. (10' x 3') Top Elev. = 165.12

Sta. 1+71.1 to Sta. 2+12.9 Install 41.8 L.F. Sand Fill per City Specifications. Fill to Elev. 161.70

Sta. 3+32.3, Line 1 Const. Type "B" Shallow Manhole. (5' Dia.) w/ Grated Lid. Top Elev. = 163.10

Sta. 5+08.7, End Line 1 Const. Std. Backyard Inlet. Top Elev. = 163.30

Existing tree row shall remain and be protected from damage during construction.



		<b>LIBERTY PARK 3RD ADDITION - PHASE 2-B</b> <b>LINE 1</b> Stormwater Sewer Improvements	
		Baughman Company, P.A. 315 Ellis St. Wichita, KS 67211 P 316-262-7271 F 316-262-0149 ENGINEERING   SURVEYING   PLANNING   LANDSCAPE ARCHITECTURE	
PROJECT NUMBER 472-84069	DESIGN JAK	DRAWN JAK	DATE 3/11/14
REVISIONS: 3/25/14 OUTFALL ELEVATION	JAK	APPROVED AEG	SHEET <b>8R OF 24</b>
E:\Projects\Liberty Park 3rd_0403P304\Engineering\Phase 2B\STR_0809_R Line 1 & 1A.dwg			