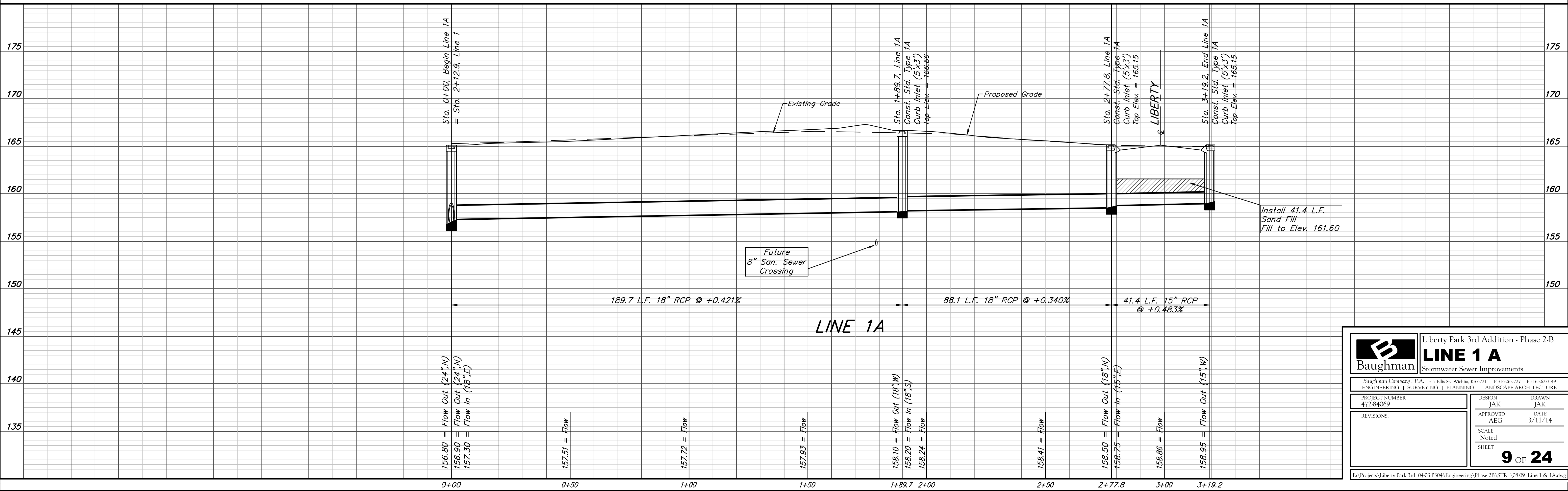
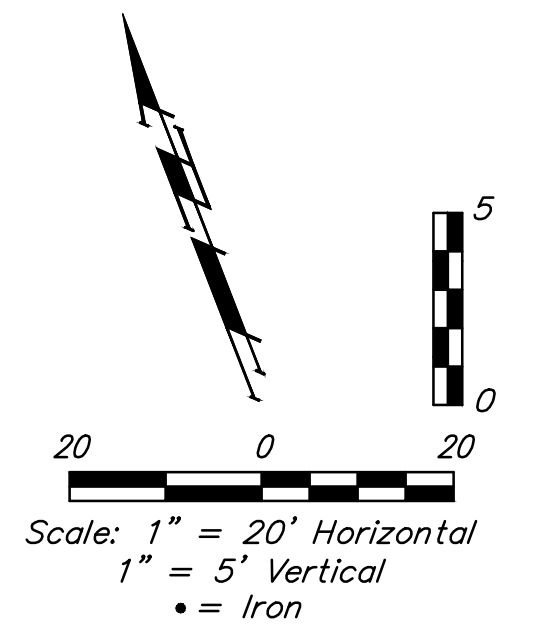
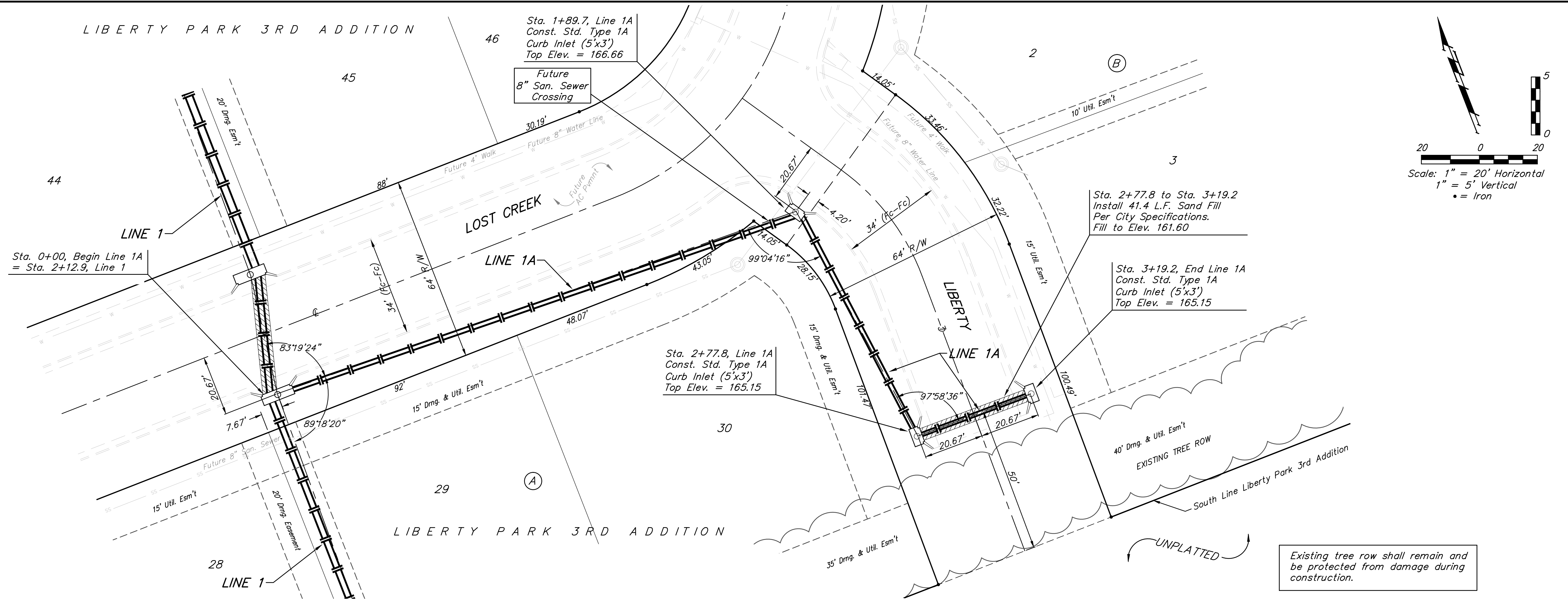


BENCHMARKS:
 "□" Cut in top of curb south end of east curb return 10th St. & Forestview adjacent to Lot 9, Block A, Liberty Park 3rd Addition Elev. = 168.43 (City Datum)
 "□" Cut in top of curb 10' east of end of existing pavement adjacent to Lot 52, Block C, Liberty Park 3rd Addition Elev. = 164.21 (City Datum)
 C.O.W. Benchmark Disk. 56' E and 55' N of Q 135th St. W. & 13th St. N. Elev. = 167.83 (City Datum)
 C.O.W. Benchmark Disk. 1/2 mile south of 13th St. 39' east of Q 135th St. 18' south of hedge row. Elev. = 159.71 (City Datum)



	Liberty Park 3rd Addition - Phase 2-B	
	LINE 1 A	
Stormwater Sewer Improvements		
<small>Baughman Company, P.A. 315 Ellis St. Wichita, KS 67211 P 316-262-7271 F 316-262-0149 ENGINEERING SURVEYING PLANNING LANDSCAPE ARCHITECTURE</small>		
PROJECT NUMBER 472-84069	DESIGN JAK	DRAWN JAK
REVISIONS:	APPROVED AEG	DATE 3/11/14
SCALE Noted		SHEET 9 OF 24
<small>E:\Projects\Liberty Park 3rd_0403\304\Engineering\Phase 2B\STR_0809_Line 1 & 1A.dwg</small>		