

PLOTTED: Monday, March 17, 2014 @ 01:35PM

GENERAL NOTES

- UNLESS SHOWN OR STATED OTHERWISE ON THESE DRAWINGS, MATERIALS AND CONSTRUCTION SHALL BE IN ACCORDANCE WITH CITY OF WICHITA SPECIFICATIONS.
- CONTRACTOR WILL BE REQUIRED TO PROVIDE A MINIMUM ADVANCE NOTICE OF SEVENTY-TWO (72) HOURS TO UTILITY COMPANIES PRIOR TO STARTING ANY EXCAVATION AS FOLLOWS:
 KANSAS ONE-CALL: 1-800-344-7233
 OR 687-2470 (LOCAL WICHITA)
 THE CONTRACTOR MUST NOTIFY THE FOLLOWING IN CASE OF AN EMERGENCY:
 SBC (TELEPHONE) 800-870-8390
 COX COMMUNICATIONS (CABLE) 262-0661
 WESTAR (ELECTRIC) 383-8600
 KANSAS GAS SERVICE (GAS) 832-3101
 CITY OF WICHITA PUBLIC WORKS & UTILITIES 262-6000
 BLACK HILLS ENERGY (GAS) 800-303-0357
- THE CONTRACTOR SHALL BE RESPONSIBLE FOR PRESERVING PROPERTY IRONS. THE CONTRACTOR WILL BE REQUIRED TO RE-ESTABLISH ANY PROPERTY IRONS WHICH ARE DAMAGED OR DESTROYED BY HIS CONSTRUCTION OPERATIONS. SUCH IRONS SHALL BE RE-ESTABLISHED BY A LICENSED LAND SURVEYOR IN ACCORDANCE WITH STATE LAWS.
- EXISTING UTILITIES AND THEIR LOCATIONS, AS SHOWN ON THE PLANS REPRESENT THE BEST INFORMATION OBTAINABLE FOR DESIGN. LOCATION INFORMATION HAS BEEN OBTAINED FROM THE VARIOUS UTILITY COMPANIES AND IS EITHER FROM COMPANY RECORD DRAWINGS OR COMPANY PROVIDED FIELD LOCATIONS. THE PLAN LOCATIONS SHOWN ARE NOT GUARANTEED. ADDITIONAL EXISTING UTILITIES MAY ALSO BE ENCOUNTERED.
- RUBBLE FROM THE REMOVAL OF MISCELLANEOUS STRUCTURES AND EXCESS EXCAVATION WHICH IS TO BE WASTED SHALL BE DISPOSED OF ON SITES TO BE PROVIDED BY THE CONTRACTOR. THESE SITES SHALL BE APPROVED BY THE ENGINEER AS TO SUITABILITY, APPEARANCE AND SITE LOCATION. LOCATIONS THAT, IN THE OPINION OF THE ENGINEER, WILL LEAVE AN UNSIGHTLY APPEARANCE WILL NOT BE APPROVED. ALL DISPOSAL SITES MUST BE APPROVED BY THE KANSAS DEPARTMENT OF HEALTH AND FLOOD PLAN WOULD REQUIRE A KANSAS STATE BOARD OF AGRICULTURE PERMIT. ANY MATERIAL DUMPED IN WATERS OF THE UNITED STATES OR WETLANDS IS SUBJECT TO U.S. CORPS OF ENGINEERS PERMITTING REGULATIONS. ANY MATERIAL BURIED OR STOCKPILED BEYOND APPROVED CONSTRUCTION LIMITS WOULD REQUIRE ADDITIONAL ARCHAEOLOGICAL INVESTIGATIONS UNLESS BURIED IN A PREVIOUSLY APPROVED BORROW LOCATION.
- THIS PROJECT INCLUDES A CERTAIN AMOUNT OF ROLL TYPE CURB CONSTRUCTION. ROLL CURBS SHALL BE DEPRESSED THROUGH ALL DRIVEWAY OPENINGS WHEN SUCH DRIVES ARE CONSTRUCTED AS A PART OF THE PROJECT.
- TRANSITION CURB FROM FULL HEIGHT COMBINATION CURB AND GUTTER TO ROLL TYPE COMBINATION CURB AND GUTTER IS TO BE PAID AS BID FOR LINEAL FEET COMBINED CURB AND GUTTER (3-5/8" ROLL).
- A SAW CUT OF AT LEAST ONE-HALF THE DEPTH OF THE EXISTING SURFACE COURSES OR ONE-FOURTH THE DEPTH OF THE EXISTING TOTAL PAVEMENT THICKNESS SHALL BE PROVIDED AT LOCATIONS WHERE PROPOSED CONSTRUCTION ABUTS AN EXISTING SURFACE OR PAVEMENT FOR WHICH PARTIAL REMOVAL OF THAT SURFACE OR PAVEMENT IS REQUIRED. SAW JOINT TO FACILITATE REMOVAL WITHIN THREE (3) FEET OF EXISTING JOINTS WILL NOT BE PERMITTED AND FOR SUCH INSTANCES THE LIMITS OF REMOVAL SHALL EXTEND TO THE EXISTING JOINT. SUCH SAW CUTS WILL NOT BE PAID FOR DIRECTLY AND THIS COST SHALL BE CONSIDERED AS SUBSIDIARY TO THE PROJECT.
- CONTRACTOR SHALL RESEED AND MULCH ALL DISTURBED AREAS. COST SHALL BE CONSIDERED SUBSIDIARY TO SITE RESTORATION.
- UNDERGROUND UTILITY SERVICE LINES AND OVERHEAD UTILITY POLE LINES ARE TO BE ADJUSTED AS NECESSARY BY OTHERS PRIOR TO CONSTRUCTION UNLESS THE PLANS SPECIFICALLY CALL FOR THEIR ADJUSTMENT BY THE CONTRACTOR. EXISTING UTILITIES AND THEIR LOCATION, AS SHOWN ON THE PLANS, REPRESENT THE BEST INFORMATION OBTAINABLE FOR DESIGN. LOCATION INFORMATION HAS BEEN OBTAINED FROM THE VARIOUS UTILITY COMPANIES AND IS EITHER FROM COMPANY RECORD DRAWINGS OR COMPANY PROVIDED FIELD LOCATIONS. THE CONTRACTOR WILL BE REQUIRED TO WORK AROUND EXISTING UTILITIES WITHIN THE RIGHT-OF-WAY WHICH DO NOT CONFLICT WITH PROPOSED CONSTRUCTION.
- THE CONTRACTOR SHALL RESTORE ALL DITCHES, SWALES, ROAD SHOULDERS, ENTRANCES AND BANK LINES TO THEIR ORIGINAL SLOPES AND GRADES EXCEPT AS SHOWN OTHERWISE.
- REMOVE TOPSOIL FROM EXCAVATION AREA AND STOCKPILE UNTIL EXCAVATION IS COMPLETE THEN REPLACE OVER DISTURBED AREA. COST SUBSIDIARY TO EARTHWORK.
- DEVELOPER FOR THIS PROJECT IS:
 PERFECTION SIGNATURE PROPERTIES, LLC
 11828 W. CENTRAL, SUITE 124
 WICHITA, KANSAS, 67212
 SCOTT LEHNER/JASON RONK
 (316)729-1900

EARTHWORK SUMMARY

| | |
|-----------------------|-------------|
| EXCAVATION | 25,074 C.Y. |
| *COMPACTED FILL (95%) | 26,688 C.Y. |

* 20% SHRINK/SWELL FACTOR ADDED

EXCESS MATERIAL TO BE PLACED & COMPACTED ON SITE.
 LOCATION DETERMINED BY ENGINEER/OWNERS DIRECTION

PROJECT LENGTH

| | |
|-------------|------------|
| VERONA | 1,003 L.F. |
| SIENA | 518 L.F. |
| VERONA CT. | 147 L.F. |
| VERONA CIR. | 158 L.F. |
| SIENA CT. | 239 L.F. |

PAVING PLANS FOR COURTYARDS AT AUBURN HILLS

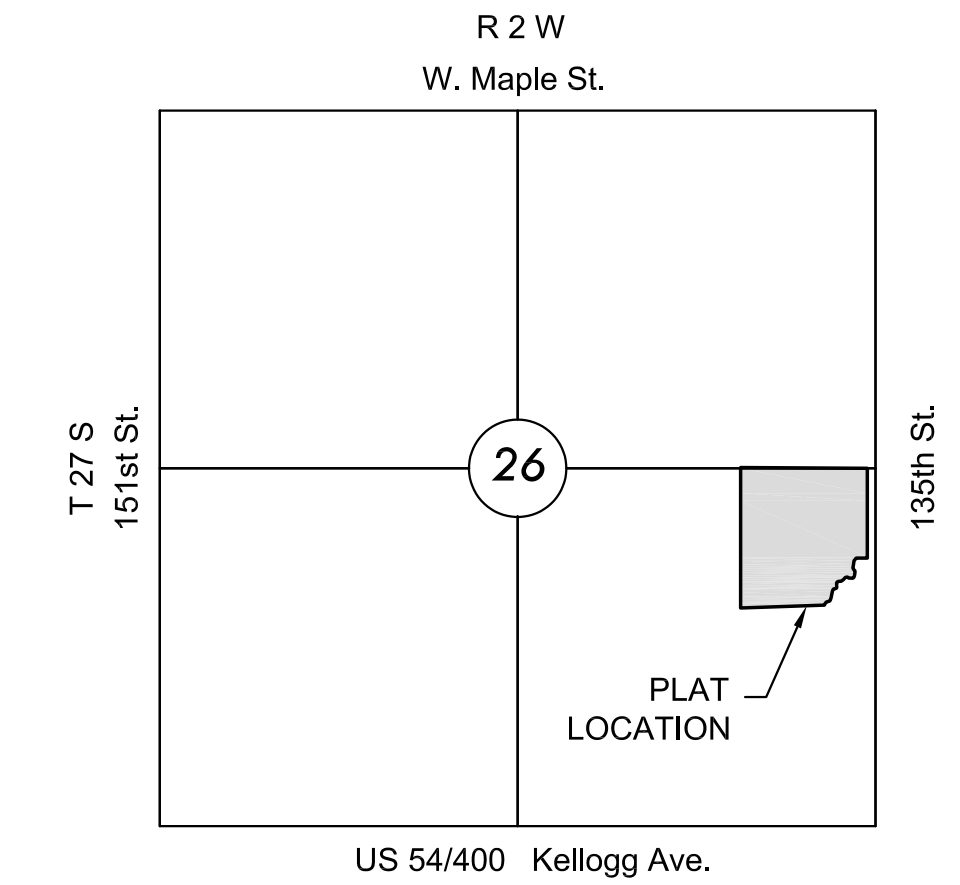
AN ADDITION TO THE CITY OF WICHITA
 SEDGWICK COUNTY, KANSAS

PROJECT NO. 472-85128

GARY L. JANZEN, P.E. - CITY ENGINEER

OCA 766303

VERONA: LOTS 1 THROUGH 46, BLOCK 1;
 LOTS 1 THROUGH 30, BLOCK 2



VICINITY MAP

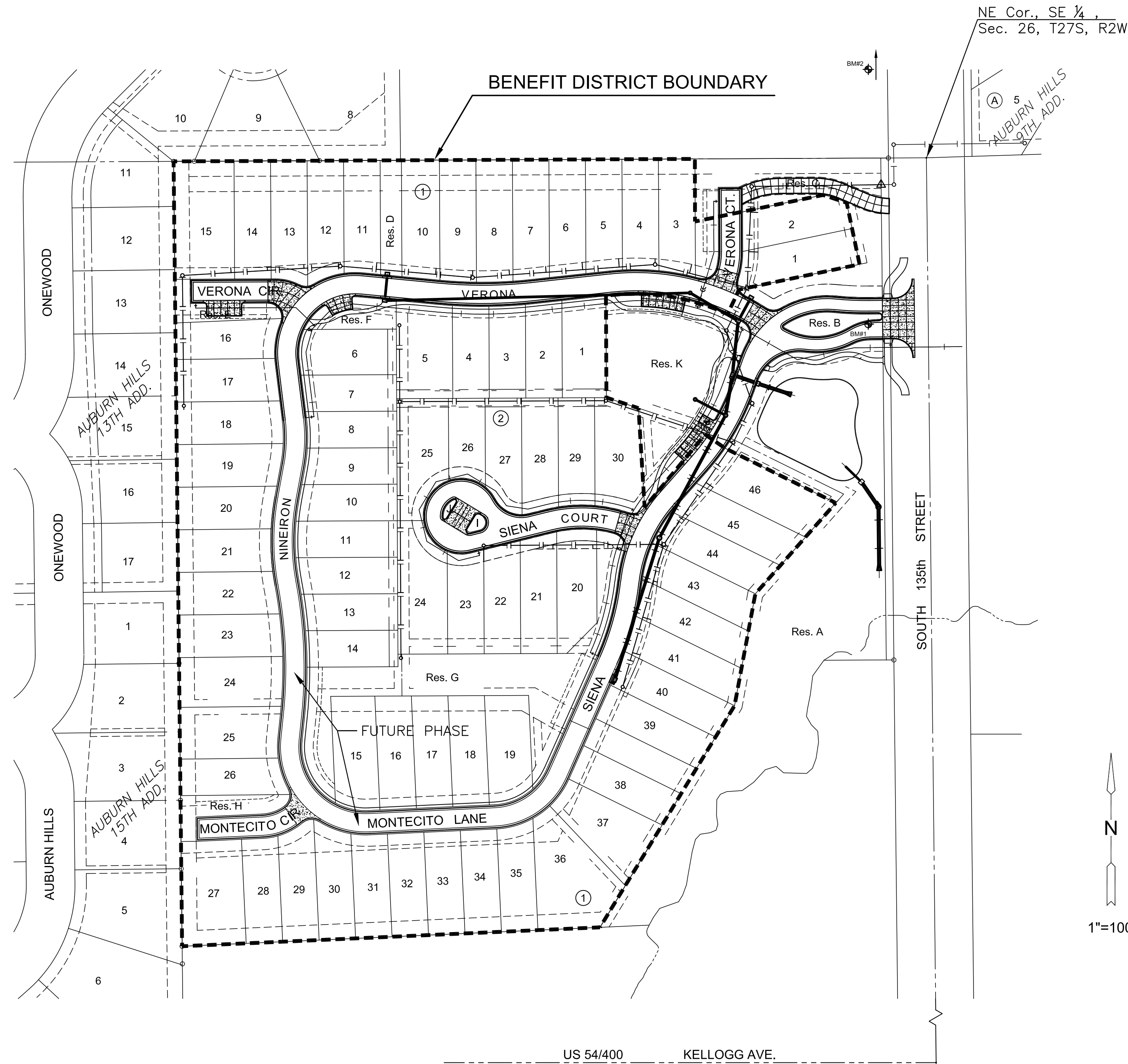
No Scale

INDEX TO DRAWINGS

| SHEET NO. | DESCRIPTION |
|-----------|--------------------------|
| 01 | TITLE SHEET |
| 02 | GRADING PLAN |
| 03-09 | PAVING DETAILS |
| 10-15 | PAVING PLANS |
| 16-17 | VALLEY GUTTER DETAILS |
| 18 | EMERGENCY ACCESS DETAILS |
| 19-22 | STORM WATER DETAILS |
| 23-27 | SWS LINES 1-5 |
| 28 | EROSION CONTROL PLAN |
| 29-30 | BUBBLE MAP |
| 31 - 35 | BMP SHEETS |
| 36-51 | CROSS SECTIONS |
| 52 | FINAL PLAT |

BENCHMARKS

- BM#1 5/8" REBAR WITH MKEC ALUMINUM CAP SET FLUSH TO THE GROUND BEING 220 FEET SOUTH AND 7.5 FEET WEST OF THE EAST 1/4 CORNER SECTION 26, T27S, R2W. ELEV.=1349.81 FEET (NAVD 88)
- BM#2 SQUARE CUT EAST NOSE OF ISLAND 50 FEET WEST OF 135TH STREET AND ONE WOOD INTERSECTION, 500 FEET NORTH OF COURTYARDS AT AUBURN HILLS ADDITION 500 FEET ON 135TH ST. WEST. ELEV = 1350.35 FEET (NAVD 88)



NE Cor., SE 1/4,
 Sec. 26, T27S, R2W

SE Cor., Sec. 26,
 T27S, R2W



PAVING & INCIDENTAL DRAINAGE FOR
COURTYARDS AT AUBURN HILLS
 PHASE 1

©2013 MKEC Engineering All Rights Reserved www.mkec.com
 These drawings and their contents, including, but not limited to, all concepts, designs, & ideas are the exclusive property of MKEC Engineering (MKEC), and may not be used or reproduced in any way without the express consent of MKEC.

TITLE SHEET

| | | |
|-------------|-----------|---------|
| PROJECT NO. | 472-85128 | |
| DATE | MAR. 2014 | |
| SCALE | AS SHOWN | |
| DESIGNED | DRAWN | CHECKED |
| JTC | LES | JAG |
| # | --- | ###/### |
| NO. | REVISION | DATE |

SHEET NO.
 01 OF 52

J:\PROJECTS\2013\1301010292_PERFECTION_COURTYARDS_AT_AUBURNHILLS\CIVIL\CAD\PAVING\PHASE 1\130292T.DWG