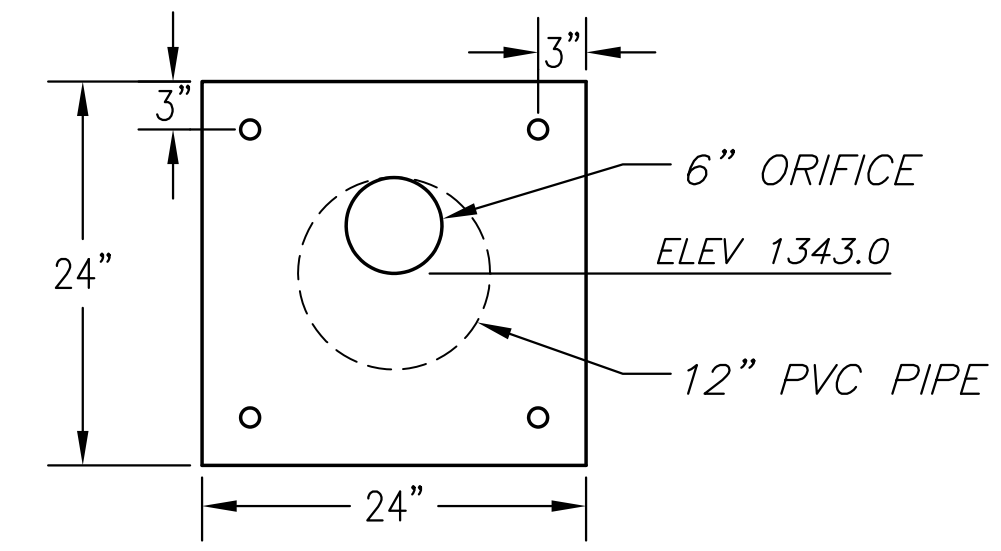
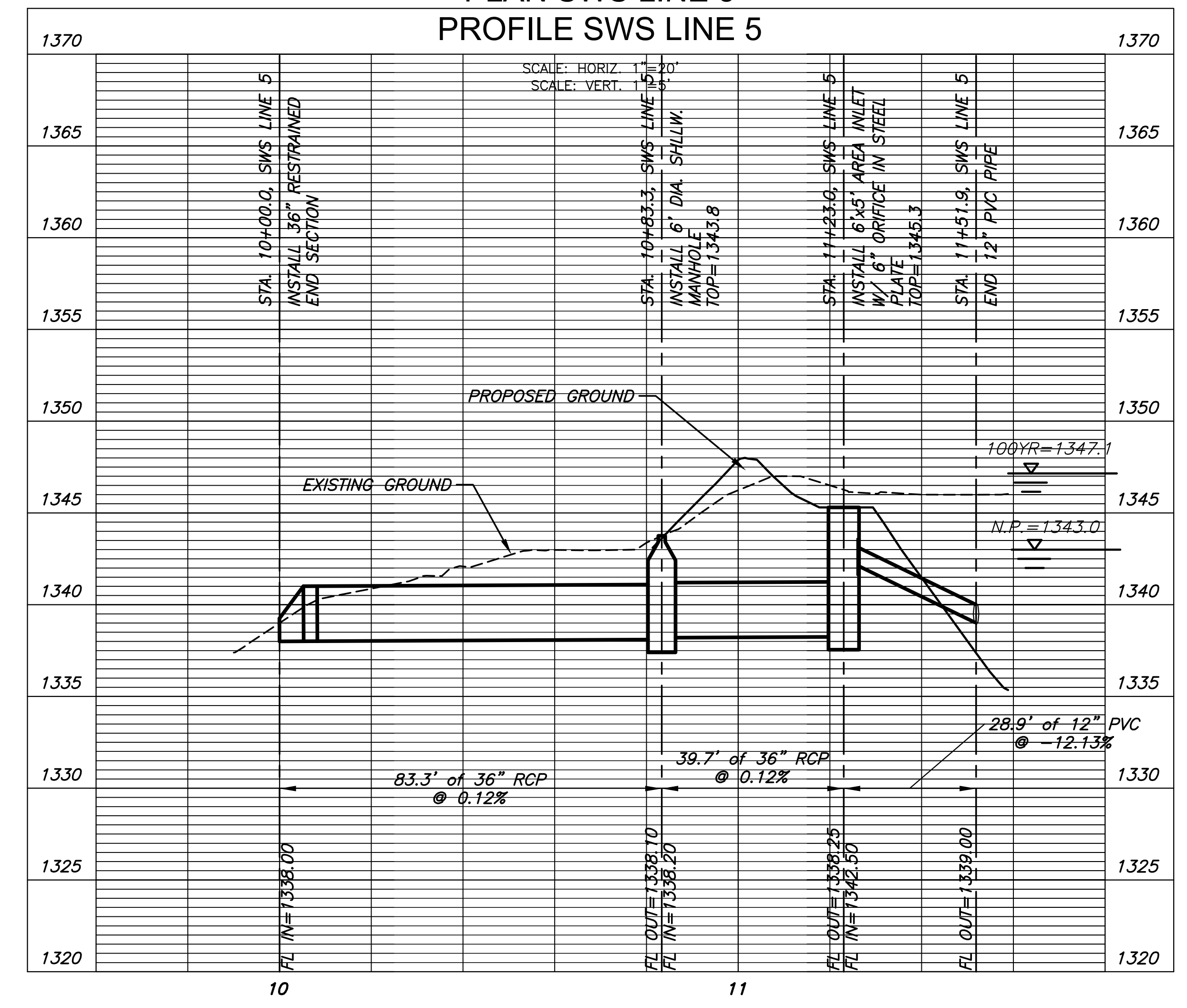


PLAN SWS LINE 5
 PROFILE SWS LINE 5



ORIFICE PLATE TO BE 1/4" A606 CORTEN
 STEEL, BOLTS TO BE (4) HILTI 304
 STAINLESS STEEL KWIK BOLT 3 WEDGE
 ANCHOR W/ 4" MIN. CONC. EMBED

©2013
 MKEC Engineering
 All Rights Reserved
 www.mkec.com
 These drawings and their contents,
 including, but not limited to, all concepts,
 designs, & ideas are the exclusive
 property of MKEC Engineering (MKEC),
 and may not be used or reproduced in any
 way without the express consent of MKEC.

SWS LINE 5 PLAN & PROFILE		
PROJECT NO.	472-85128	
DATE	MAR, 2014	
SCALE	1"=20'	
DESIGNED	DRAWN	CHECKED
SPE	SPE	JTC
NO.	REVISION	DATE
SHEET NO.		
27 OF 52		

J:\PROJECTS\2013\1010292_PERFECTION_COURTYARDS_AT_AUBURNHILLS-CIVIL\CAD\SWS\PHASE 1\13292_DS.DWG