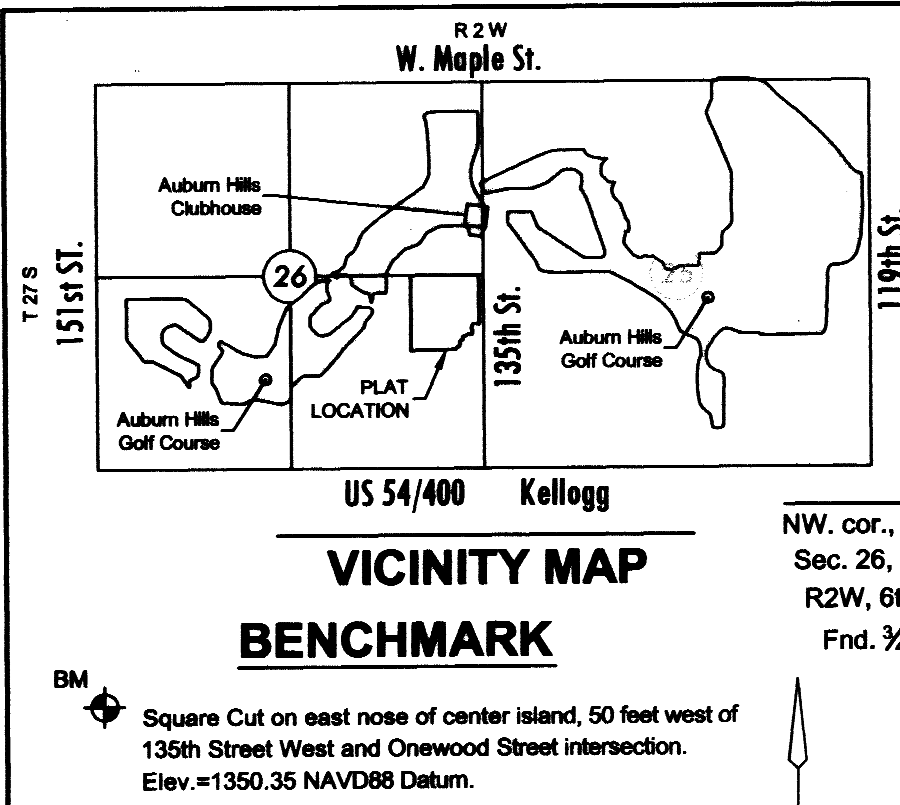


COURTYARDS AT AUBURN HILLS

AN ADDITION TO WICHITA, SEDGWICK COUNTY, KANSAS



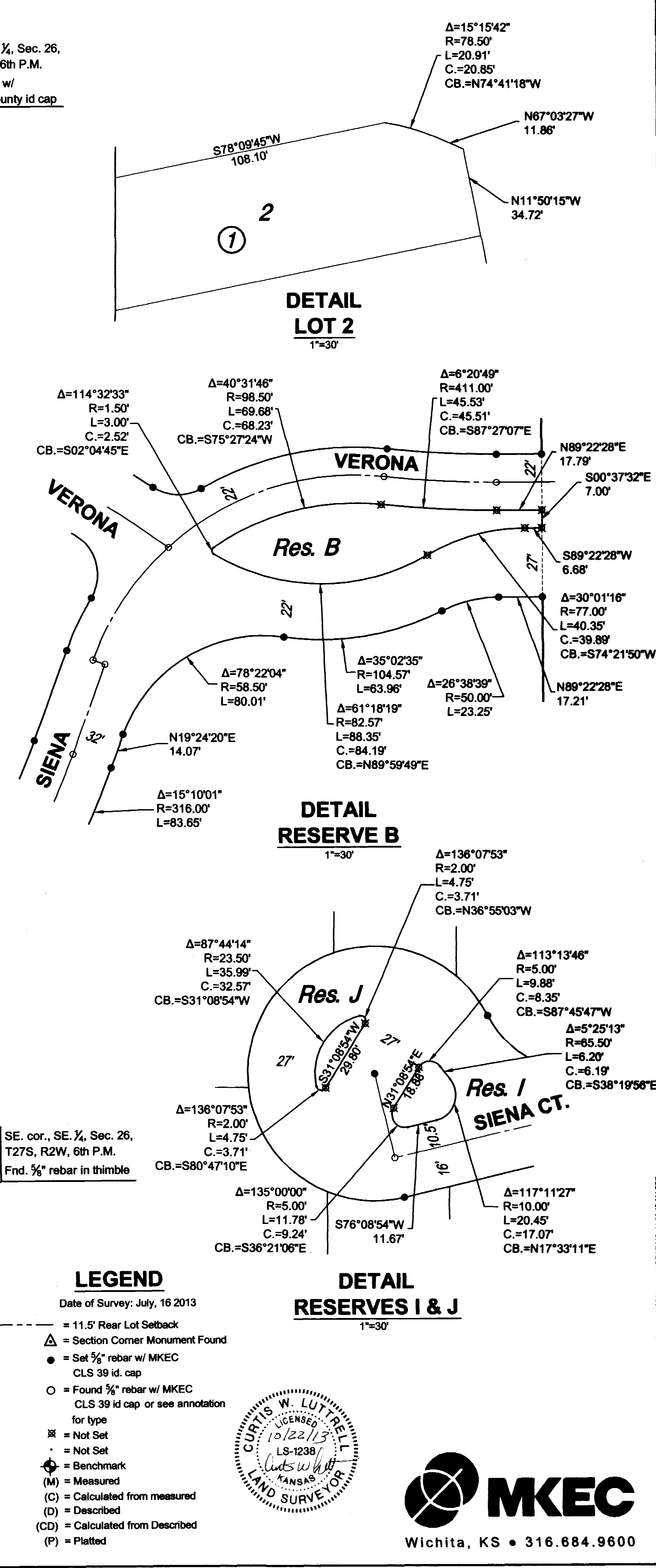
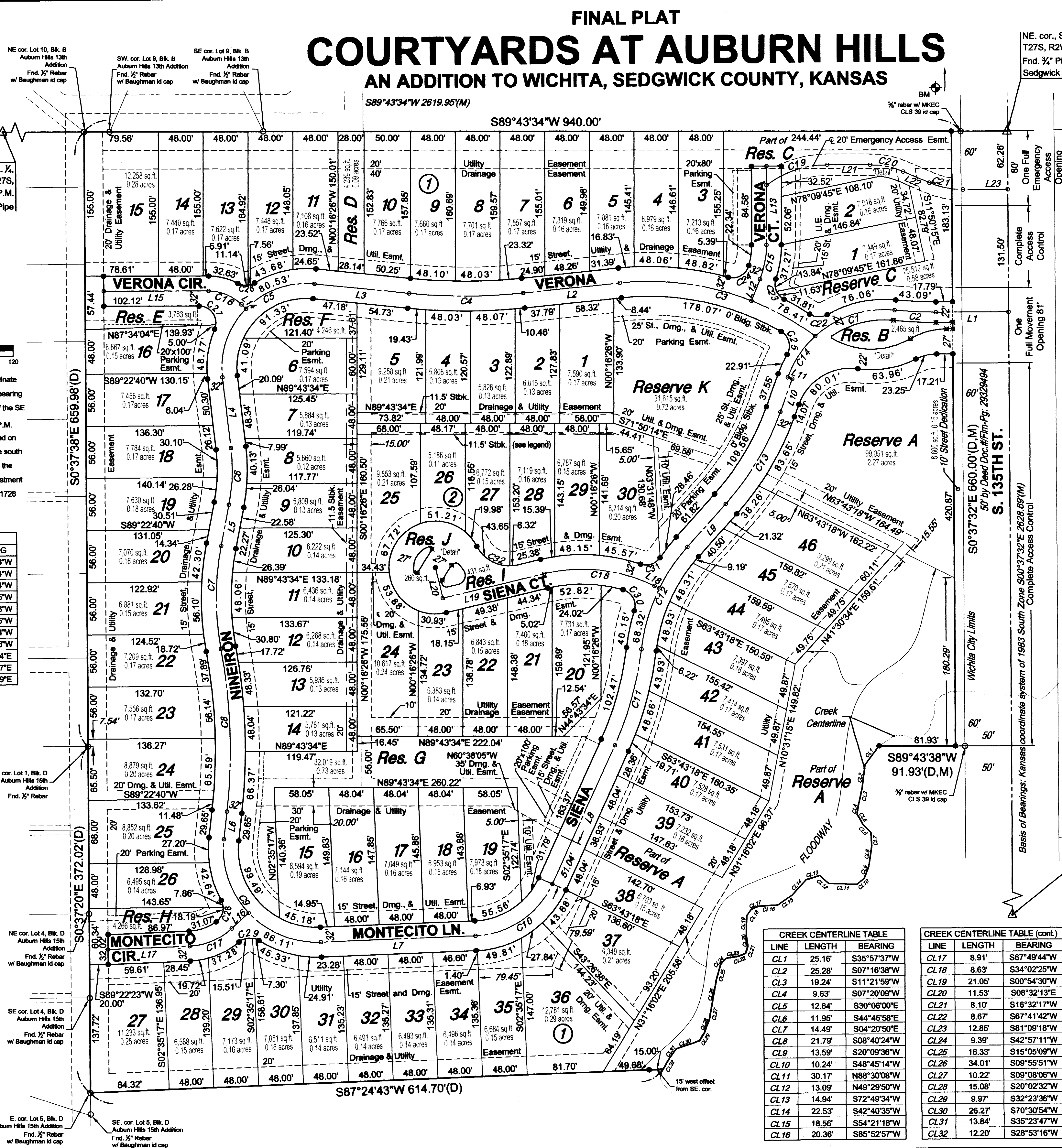
LOT	BLOCK	ELEVATION NAVD88
35	1	1349.7
36	1	1350.2
37	1	1348.7
38	1	1348.1
39	1	1347.6
40	1	1347.6
41	1	1347.2
42	1	1346.8
43	1	1346.3
44	1	1346.0
45	1	1346.0
46	1	1353.4

LINE	LENGTH	BEARING
L1	77.79	N89°22'28"E
L2	104.55	S83°44'51"W
L3	101.92	N84°32'01"W
L4	76.42	S07°03'47"E
L5	44.86	S10°29'25"W
L6	29.65	S06°02'29"W
L7	165.88	N87°21'41"E
L8	163.37	N24°00'32"E
L9	61.82	N41°30'34"E
L10	37.55	N19°24'20"E
L11	5.00	N70°35'40"W
L12	24.99	N21°15'20"E

LINE	LENGTH	BEARING
L13	84.58	N00°16'26"W
L14	6.78	N45°47'54"W
L15	112.41	S89°43'34"W
L16	24.67	S46°42'05"W
L17	87.52	S87°24'43"W
L18	5.82	N63°59'45"W
L19	111.87	S78°08'54"W
L20	34.00	N13°51'06"W
L21	45.90	N89°43'34"E
L22	30.39	S67°03'27"E
L23	47.96	N89°22'28"E

CURVE	LENGTH	RADIUS	CHORD	BEARING	DELTA
C1	92.13	109.50	89.43	S71°37'08"W	48°12'19"
C2	44.31	400.00	44.29	S87°27'08"E	6°20'49"
C3	222.44	300.00	217.38	N75°00'40"W	42°28'58"
C4	122.72	800.00	122.51	N89°38'25"E	11°43'08"
C5	161.05	90.00	140.41	S44°12'06"W	102°31'46"
C6	81.27	200.00	61.03	N01°42'49"E	17°33'12"
C7	111.18	300.00	110.55	S00°07'37"E	21°14'04"
C8	175.78	800.00	175.15	N02°21'05"W	16°47'08"
C9	172.23	100.00	151.72	S43°17'55"E	98°40'48"
C10	105.04	95.00	99.77	N55°41'07"E	63°21'08"
C11	107.38	350.00	106.98	N15°13'12"E	17°34'40"
C12	122.45	200.00	120.54	S23°58'13"W	35°04'42"
C13	115.74	300.00	115.02	N30°27'27"E	22°06'14"
C14	53.72	109.50	53.19	S33°27'39"W	28°06'39"
C15	37.58	100.00	37.36	N10°29'27"E	21°31'46"
C16	38.81	50.00	37.84	N68°02'10"W	44°28'31"
C17	49.74	70.00	48.70	N67°03'24"E	40°42'38"
C18	121.73	175.00	119.29	N83°55'26"W	39°51'21"
C19	69.91	108.17	68.70	S71°12'36"W	37°01'58"
C20	36.47	90.00	36.22	N78°39'56"W	23°12'58"
C21	37.02	90.00	36.78	S78°50'29"E	23°34'04"

LOT/RESERVE	LENGTH	RADIUS	CHORD	BEARING	DELTA
C22	19.88	18.00	18.88	S88°48'19"E	63°16'31"
C23	25.47	18.00	23.40	S22°24'04"E	81°04'13"
C24	28.39	18.00	25.54	N60°09'11"E	90°22'57"
C25	28.47	18.00	25.59	N15°00'49"W	90°37'36"
C26	18.70	18.00	17.87	N88°17'26"E	58°31'24"
C27	35.45	18.00	29.99	N33°51'18"W	112°50'18"
C28	26.05	18.00	23.83	N12°59'52"E	82°54'18"
C29	22.81	18.00	21.32	S85°44'54"W	72°36'51"
C30	28.72	18.00	25.77	N28°38'10"W	91°25'59"
C31	23.54	18.00	21.90	N71°25'06"E	74°58'08"
C32	51.97	39.00	48.21	S85°40'32"E	78°21'07"



LINE	LENGTH	BEARING
CL1	25.16	S35°57'37"W
CL2	25.28	S07°16'38"W
CL3	19.24	S11°21'59"W
CL4	9.63	S07°20'09"W
CL5	12.64	S30°06'00"E
CL6	11.95	S44°46'58"E
CL7	14.49	S04°20'50"E
CL8	21.79	S08°40'24"W
CL9	13.59	S20°09'36"W
CL10	10.24	S48°45'14"W
CL11	30.17	N88°30'08"W
CL12	13.09	N49°29'50"W
CL13	14.94	S72°49'34"W
CL14	22.53	S42°40'35"W
CL15	18.56	S54°21'18"W
CL16	20.36	S85°52'57"W

LINE	LENGTH	BEARING
CL17	8.91	S67°49'44"W
CL18	8.63	S34°02'25"W
CL19	21.05	S00°54'30"W
CL20	11.53	S08°32'13"E
CL21	8.10	S16°32'17"W
CL22	8.67	S67°41'42"W
CL23	12.85	S81°53'17"W
CL24	9.39	S42°57'11"W
CL25	13.38	S15°05'09"W
CL26	34.01	S09°55'51"W
CL27	10.22	S09°08'06"W
CL28	15.08	S20°02'32"W
CL29	9.97	S32°23'36"W
CL30	26.27	S70°30'54"W
CL31	13.84	S35°23'47"W
CL32	12.20	S28°53'16"W

LEGEND
Date of Survey: July, 16, 2013

- 11.5' Rear Lot Setback
- Section Corner Monument Found
- Set 3/4" rebar w/ MKEC CLS 39 id cap
- Found 3/4" rebar w/ MKEC CLS 39 id cap or see annotation for type
- Not Set
- Not Set
- Benchmark
- Measured
- Calculated from measured
- Described
- Calculated from Described
- Platted

DETAIL RESERVES I & J
1"=30'

MKEC
Wichita, KS • 316.684.9600