

### GENERAL NOTES

- UNLESS SHOWN OR STATED OTHERWISE ON THESE DRAWINGS, MATERIALS AND CONSTRUCTION SHALL BE IN ACCORDANCE WITH CITY OF WICHITA STANDARD SPECIFICATIONS.
- CONTRACTOR WILL BE REQUIRED TO PROVIDE A MINIMUM ADVANCE NOTICE OF SEVENTY-TWO (72) HOURS TO UTILITY COMPANIES PRIOR TO STARTING ANY EXCAVATION AS FOLLOWS:

KANSAS ONE-CALL 1-800-344-7233  
or 687-2470 (LOCAL WICHITA)

THE CONTRACTOR MUST NOTIFY THE FOLLOWING IN CASE OF AN EMERGENCY:

AT&T (TELEPHONE) 800-870-8390  
COX COMMUNICATIONS (CABLE) 262-0661  
KANSAS GAS SERVICE (GAS) 832-3101  
CITY OF WICHITA WATER & SEWER 262-6000  
WESTAR (ELECTRIC) 383-8600  
BLACK HILLS ENERGY (GAS) 800-303-0357

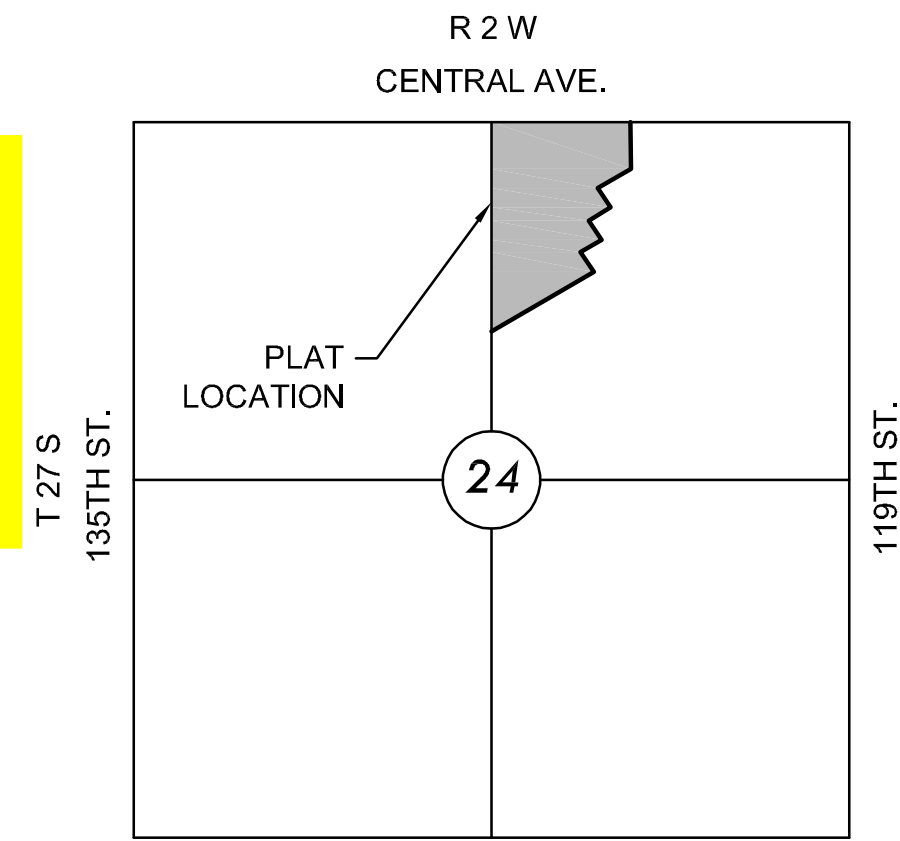
- THE CONTRACTOR SHALL BE RESPONSIBLE FOR PRESERVING PROPERTY IRONS. THE CONTRACTOR WILL BE REQUIRED TO RE-ESTABLISH ANY PROPERTY IRONS WHICH ARE DAMAGED OR DESTROYED BY HIS CONSTRUCTION OPERATIONS. SUCH IRONS SHALL BE RE-ESTABLISHED BY A LICENSED LAND SURVEYOR IN ACCORDANCE WITH STATE LAWS.
- EXISTING UTILITIES AND THEIR LOCATIONS, AS SHOWN ON THE PLANS REPRESENT THE BEST INFORMATION OBTAINABLE FOR DESIGN. LOCATION INFORMATION HAS BEEN OBTAINED FROM THE VARIOUS UTILITY COMPANIES AND IS EITHER FROM COMPANY RECORD DRAWINGS OR COMPANY PROVIDED FIELD LOCATIONS. THE PLAN LOCATIONS SHOWN ARE NOT GUARANTEED. ADDITIONAL EXISTING UTILITIES MAY ALSO BE ENCOUNTERED.
- RUBBLE FROM THE REMOVAL OF MISCELLANEOUS STRUCTURES AND EXCESS EXCAVATION WHICH IS TO BE WASTED SHALL BE DISPOSED OF ON SITES TO BE PROVIDED BY THE CONTRACTOR. THESE SITES SHALL BE APPROVED BY THE ENGINEER AS TO SUITABILITY, APPEARANCE AND SITE LOCATION. LOCATIONS THAT, IN THE OPINION OF THE ENGINEER, WILL LEAVE AN UNSIGHTLY APPEARANCE WILL NOT BE APPROVED. ALL DISPOSAL SITES MUST BE APPROVED BY THE KANSAS DEPARTMENT OF HEALTH AND ENVIRONMENT. MATERIAL EITHER STOCKPILED OR DISPOSED OF IN A FLOOD PLAIN WOULD REQUIRE A KANSAS STATE BOARD OF AGRICULTURE PERMIT. ANY MATERIAL DUMPED IN WATERS OF THE UNITED STATES OR WETLANDS IS SUBJECT TO U.S. CORPS OF ENGINEERS PERMITTING REGULATIONS. ANY MATERIAL BURIED OR STOCKPILED BEYOND APPROVED CONSTRUCTION LIMITS WOULD REQUIRE ADDITIONAL ARCHAEOLOGICAL INVESTIGATIONS UNLESS BURIED IN A PREVIOUSLY APPROVED BORROW LOCATION.
- COST OF EXCAVATION, HAULING, AND DUMPING OF EXCESS EXCAVATION SHALL BE SUBSIDIARY TO THE PROJECT.
- A PORTION OF EXCESS EXCAVATED MATERIAL SHALL BE MOUNDED AROUND MANHOLES WHICH EXTEND MORE THAN ONE (1) FOOT ABOVE THE EXISTING GROUND. SUCH MOUNDS SHALL BE CONSTRUCTED WITH A SIX (6) FOOT DIAMETER FLAT TOP WITH 4 TO 1 SIDE SLOPES DOWN TO THE ORIGINAL GROUND. THE ELEVATION OF THE FLAT TOP OF THE MOUND SHALL BE 0.4 FOOT BELOW THE TOP OF THE MANHOLE.
- ALL STUBS AND PLUGGED PIPES SHALL BE LOCATED WITH GREEN PLASTIC TAPE IN THE SAME MANNER AS RISERS.
- CONNECTING TO EXISTING MANHOLES:  
PRIOR TO LAYING SEWER LINES USING EXISTING STUBS IN EXISTING MANHOLES, THE CONTRACTOR SHALL EXPOSE AND VERIFY THE ELEVATION, GRADE AND ALIGNMENT OF EXISTING STUBS AND NOTIFY THE ENGINEER OF ANY DEVIATION FROM THE PLAN. WHERE CONNECTION TO AN EXISTING MANHOLE THAT DOES NOT HAVE AN EXISTING STUB OR THE STUB IS UNUSABLE DUE TO ELEVATION GRADE OR ALIGNMENT, THE CONTRACTOR SHALL BORE CUT INTO EXISTING MANHOLE WALL TO MAKE CONNECTION USING APPROVED WATER STOP GASKET, AND RESHAPE THE EXISTING MANHOLE INVERT TO PROVIDE SMOOTH FLOW. THE COST OF CONNECTING TO EXISTING MANHOLES IS INCIDENTAL TO THE PROJECT.
- TREES AND SHRUBS IN PUBLIC RIGHT-OF-WAY WHICH ARE IN DIRECT CONFLICT WITH PROPOSED NEW CONSTRUCTION SHALL BE REMOVED BY THE CONTRACTOR WITH THE ENGINEER'S APPROVAL. TREES AND SHRUBS WHICH ARE NOT IN DIRECT CONFLICT WITH PROPOSED NEW CONSTRUCTION SHALL BE SAVED AND PROTECTED FROM DAMAGE.
- ALL DISTURBED AREAS TO BE SEEDED WITH RYE GRASS AT A RATE OF 200 LBS. PER ACRE WITHIN 10 DAYS OF CONSTRUCTION. CONTRACTOR TO PREPARE GROUND PER CITY SPECIFICATIONS. COST IS SUBSIDIARY TO SITE PREPARATION AND RESTORATION.
- PORTIONS OF THE WORK ON THIS PROJECT ARE IN PROXIMITY TO EXISTING UNDERGROUND UTILITIES AND ABOVE GROUND UTILITY APPURTENANCES, AS WELL AS WITHIN DEVELOPED LOTS WITH FENCES AND GRASS. THE CONTRACTOR SHALL CONTACT EACH AFFECTED UTILITY COMPANY AND SHALL ACCOMMODATE/SUPPORT UTILITY FACILITIES AS REQUIRED AND E-ESTABLISH GRASSSED AREA DISTURBED BY CONSTRUCTION WITH THE SAME TYPE OF VEGETATION CURRENTLY ESTABLISHED. THE COST OF UTILITY ACCOMMODATION SHALL NOT BE A PAY ITEM, BUT WILL BE CONSIDERED SUBSIDIARY TO THE COST OF INSTALLING SANITARY SEWER PIPE. THE COST OF REMOVAL AND REPLACEMENT OF EXISTING FENCES AND VEGETATION SHALL NOT BE A PAY ITEM, BUT WILL BE CONSIDERED SUBSIDIARY TO THE COST OF SITE CLEARING AND RESTORATION.
- CONTRACTOR TO COORDINATE CONSTRUCTION OF WATERLINE WITH OTHER CONSTRUCTION ACTIVITIES ON SITE. THIS INCLUDES SANITARY SEWER AND MASS GRADING PROJECTS. MASS GRADING SHALL ALREADY BE UNDERWAY AT THE ONSET OF THIS PROJECT.
- DEVELOPER FOR THIS PROJECT IS:  
SCHELLENBERG DEVELOPMENT  
7926 W 21ST STREET  
WICHITA, KS 67205  
MARV SCHELLENBERG  
316-854-0001

# SANITARY SEWER TO SERVE BAY COUNTRY ADDITION LATERAL 62, COWSKIN INTERCEPTOR SEWER PROJECT NO. 468-84890

THE CITY OF WICHITA, KANSAS  
GARY JANZEN, P.E. - CITY ENGINEER

OCA NO. 744354

McCullough Construction - Contractor  
K. Kerns - City of Wichita, Field Project Engr.  
J. Patton - City of Wichita, Inspector  
As-built  
Stubs & Risers  
Release Date: 12/10/2013  
pdf: APRosas 04/02/2014



VICINITY MAP  
No Scale



### INDEX TO DRAWINGS

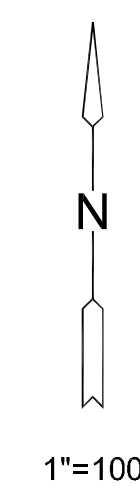
SHEET NO.	DESCRIPTION
1	TITLE SHEET
2-4	SS DETAILS
5-6	LINE 1 PLAN & PROFILE
7	LINE 2, 3 & 4 PLAN & PROFILE
8	BUBBLE MAP
9-13	BMP SHEETS
14-15	FINAL PLAT

### BENCHMARKS

- BM#1 CITY OF WICHITA BENCHMARK DISC ON SOUTHWEST CORNER OF CENTRAL & WHEATLAND, 24' WEST OF CENTERLINE WHEATLAND AND 36' S OF CENTERLINE CENTRAL. ELEV.=1342.80 NAVD88
- BM#2 CHISELED SQUARE ON TOP OF CURB AT SOUTH END OF MEDIAN ISLAND ON BAY COUNTRY, 93' SOUTH OF CENTERLINE CENTRAL. ELEV.=1342.77 NAVD88

### CONTROL POINTS

- CP #1 3/4" PIPE & ALUM CAP AT NW CORNER LOT 84, BLOCK 3, BAY COUNTRY ADDITION. N=1687889.44, E=1604863.96
- CP#2 3/4" PEC PIPE 20 IN DEEP SET 5/8" MKEC OVER AT NE CORNER LOT 1, BLOCK 3, BAY COUNTRY ADDITION. N=1687927.02, E=1605860.01
- CP#3 1/2" BAUGHMAN CLS-58 AT SE CORNER LOT 24, BLOCK 3, BAY COUNTRY ADDITION. N=1686628.75, E=1605581.12
- CP#4 1/2" BAUGHMAN CLS-58 AT SW CORNER LOT 102, BLOCK 3, BAY COUNTRY ADDITION. N=1686247.37, E=1604891.11



# SANITARY SEWER PLANS FOR BAY COUNTRY ADDITION PHASE 1

©2013 MKEC Engineering All Rights Reserved  
www.mkec.com  
These drawings and their contents, including, but not limited to, all concepts, designs, & ideas are the exclusive property of MKEC Engineering (MKEC), and may not be used or reproduced in any way without the express consent of MKEC.

### TITLE SHEET

PROJECT NO.	468-84890	
DATE	AUGUST 2013	
SCALE	1"=100'	
DESIGNED	DRAWN	CHECKED
SPE	SPE	GJA
NO.	REVISION	DATE

