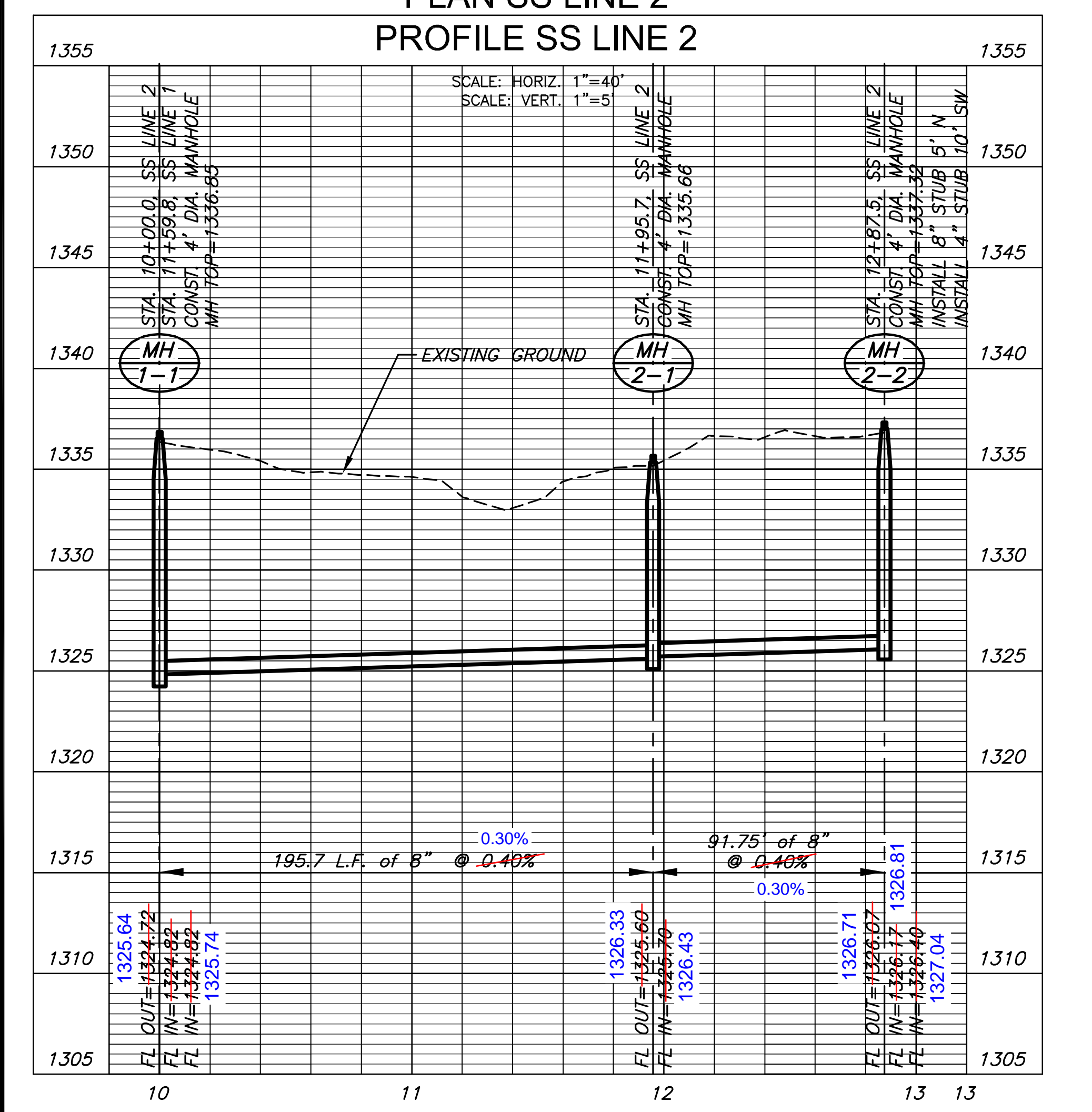
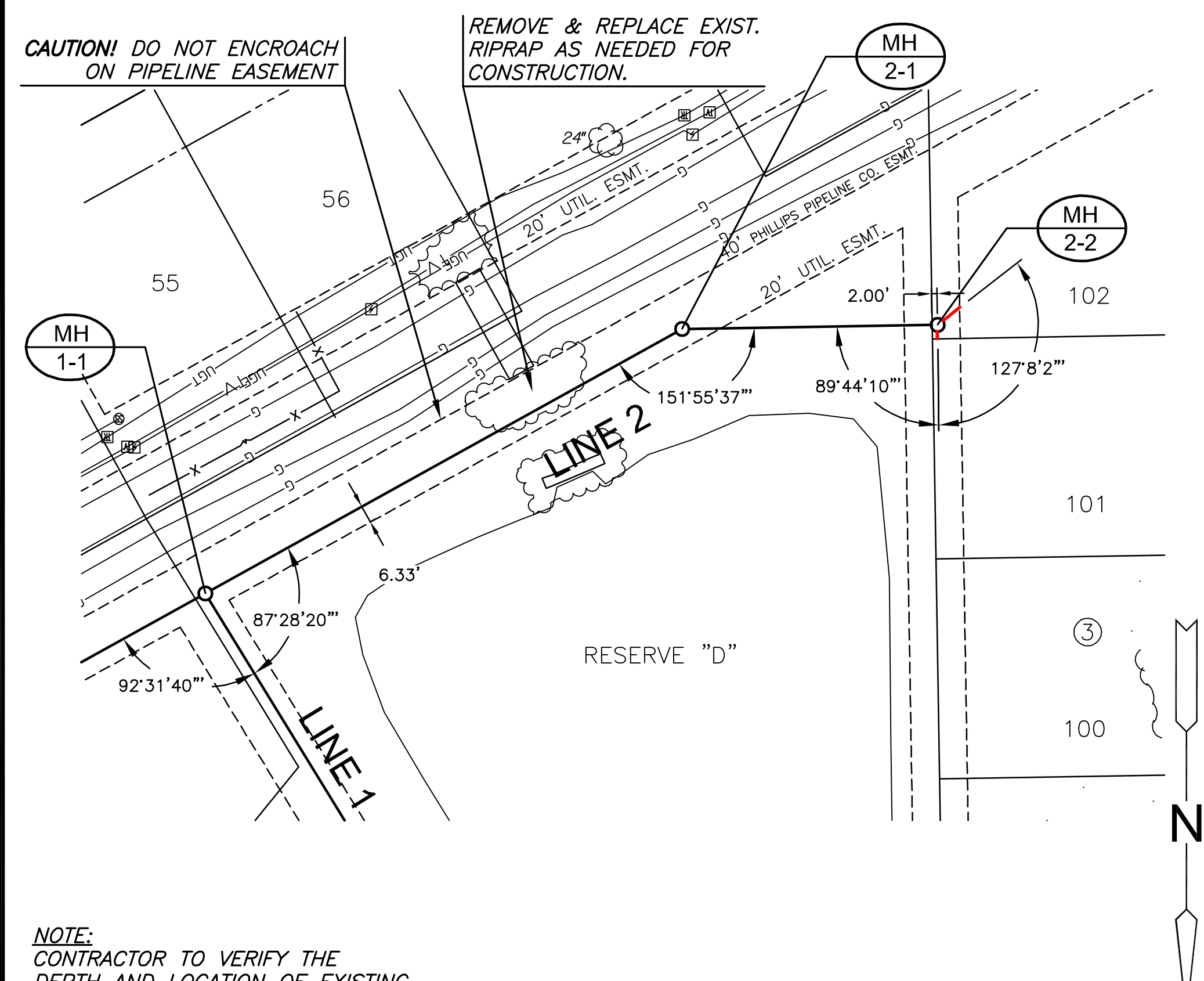
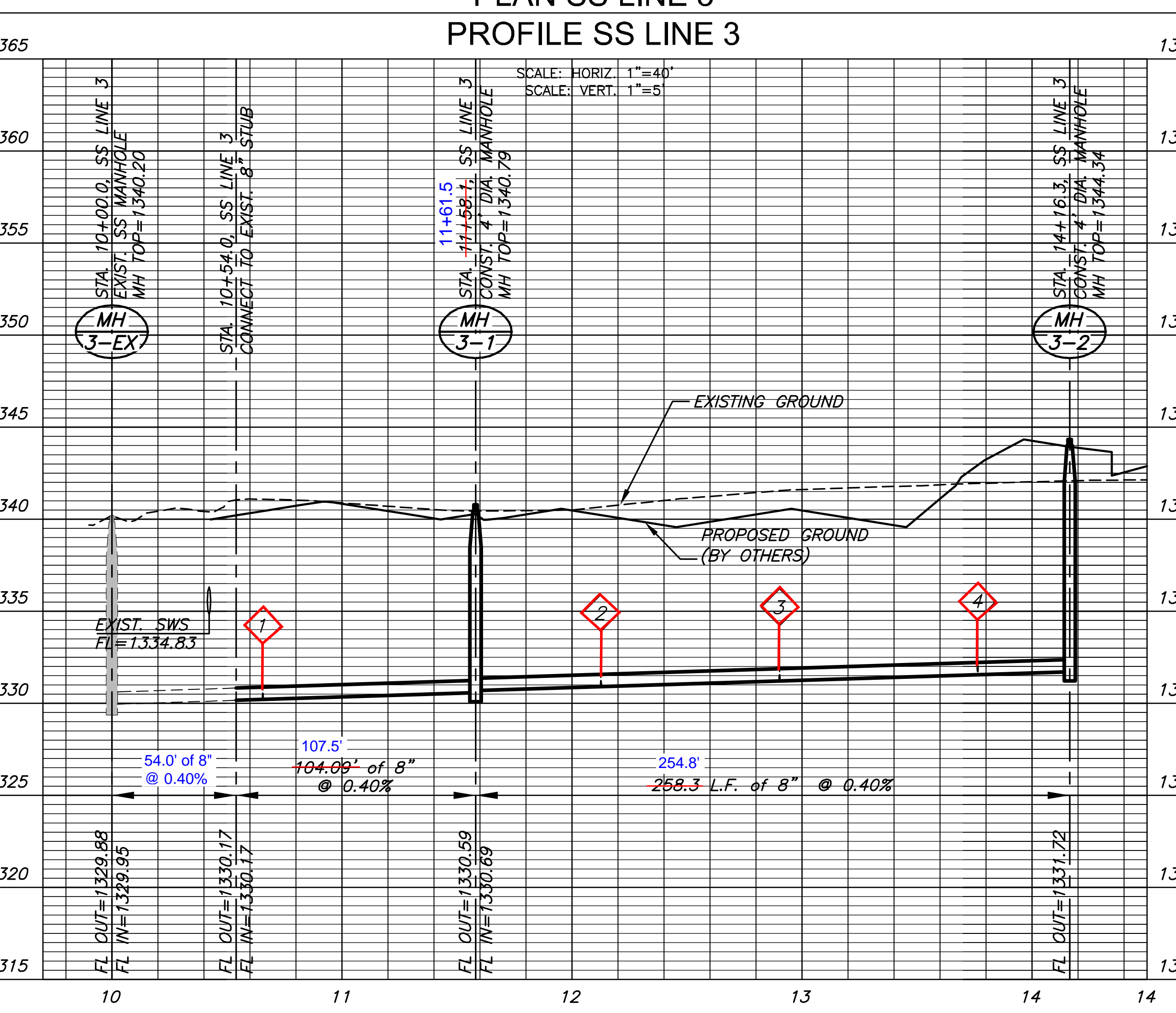
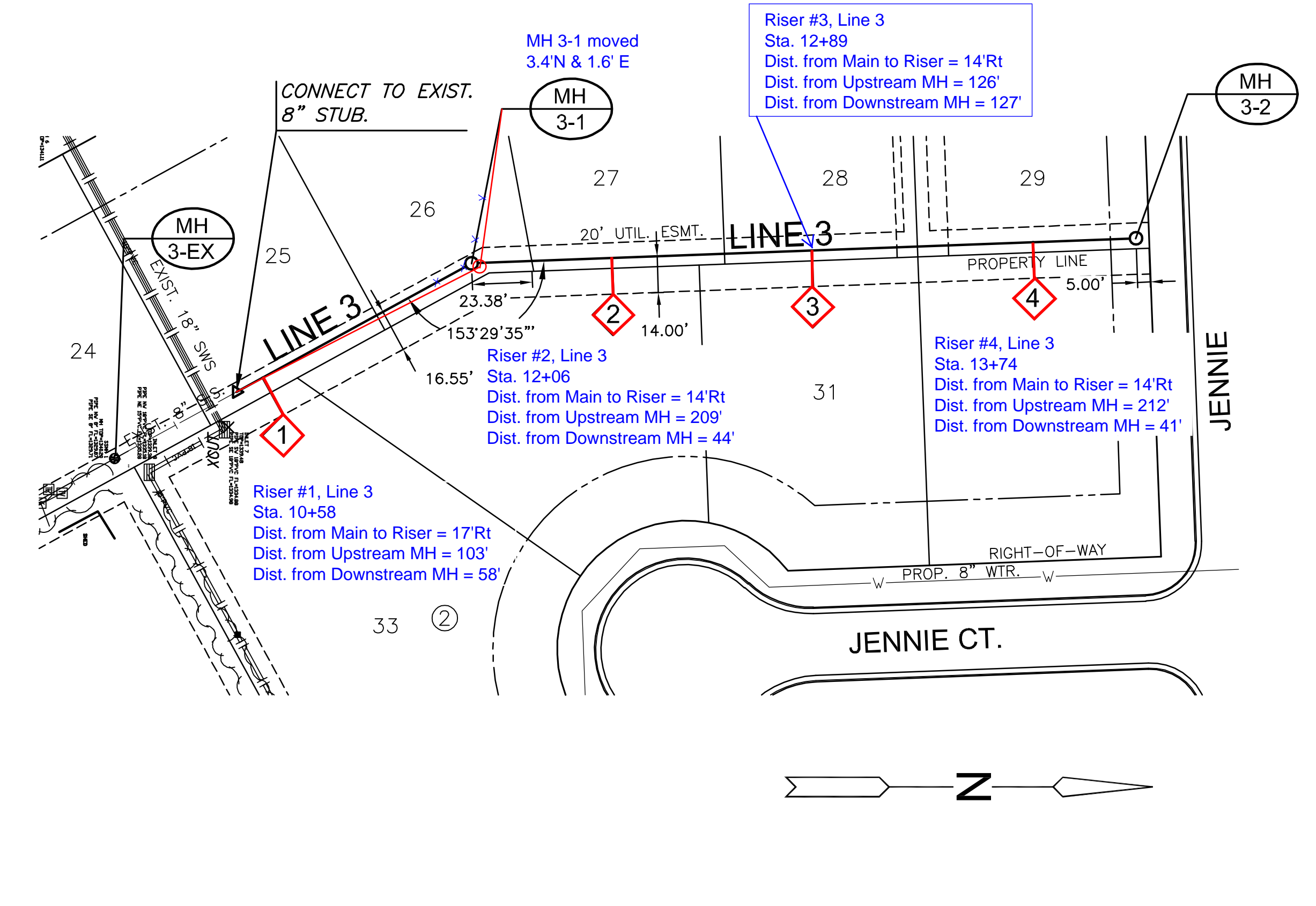
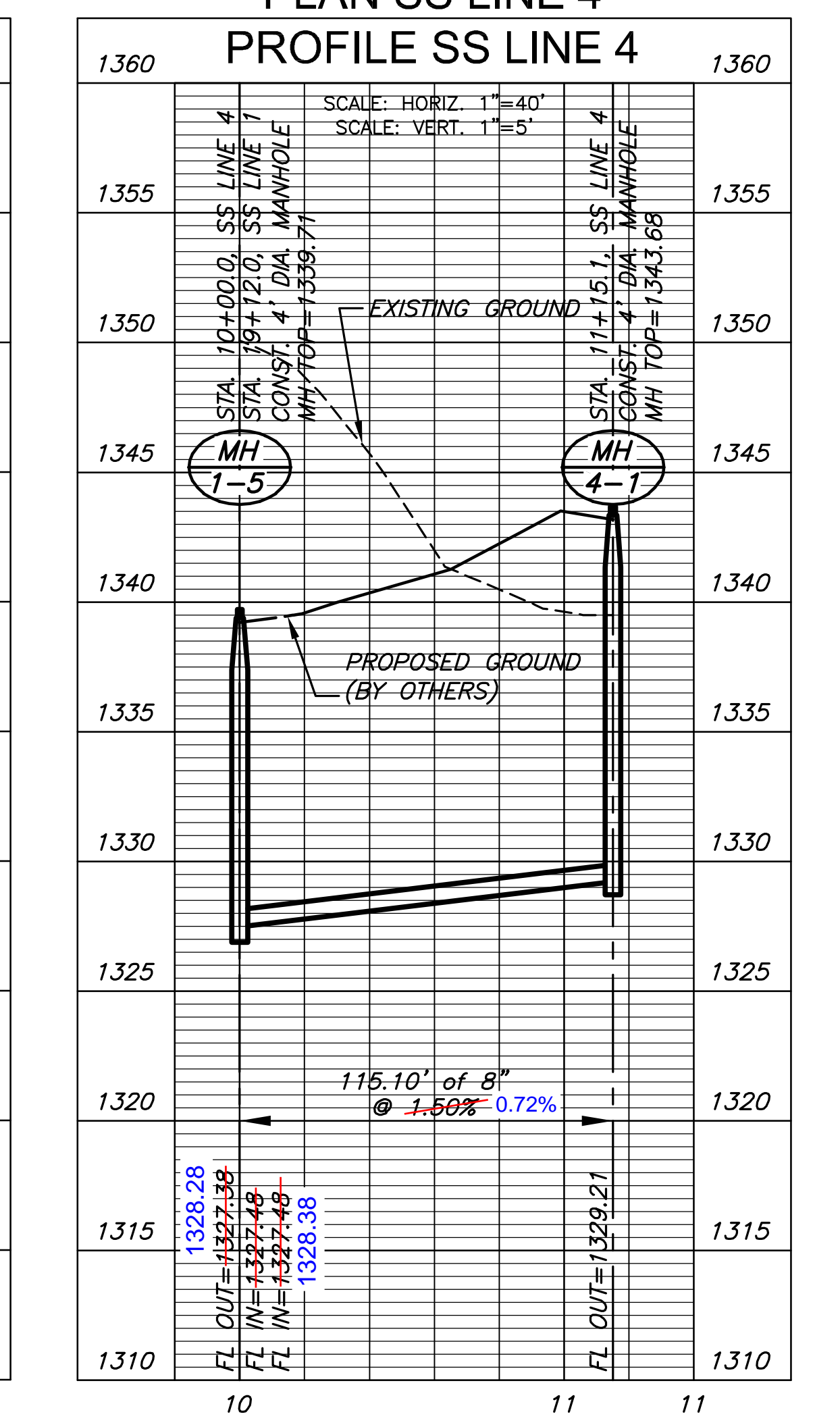
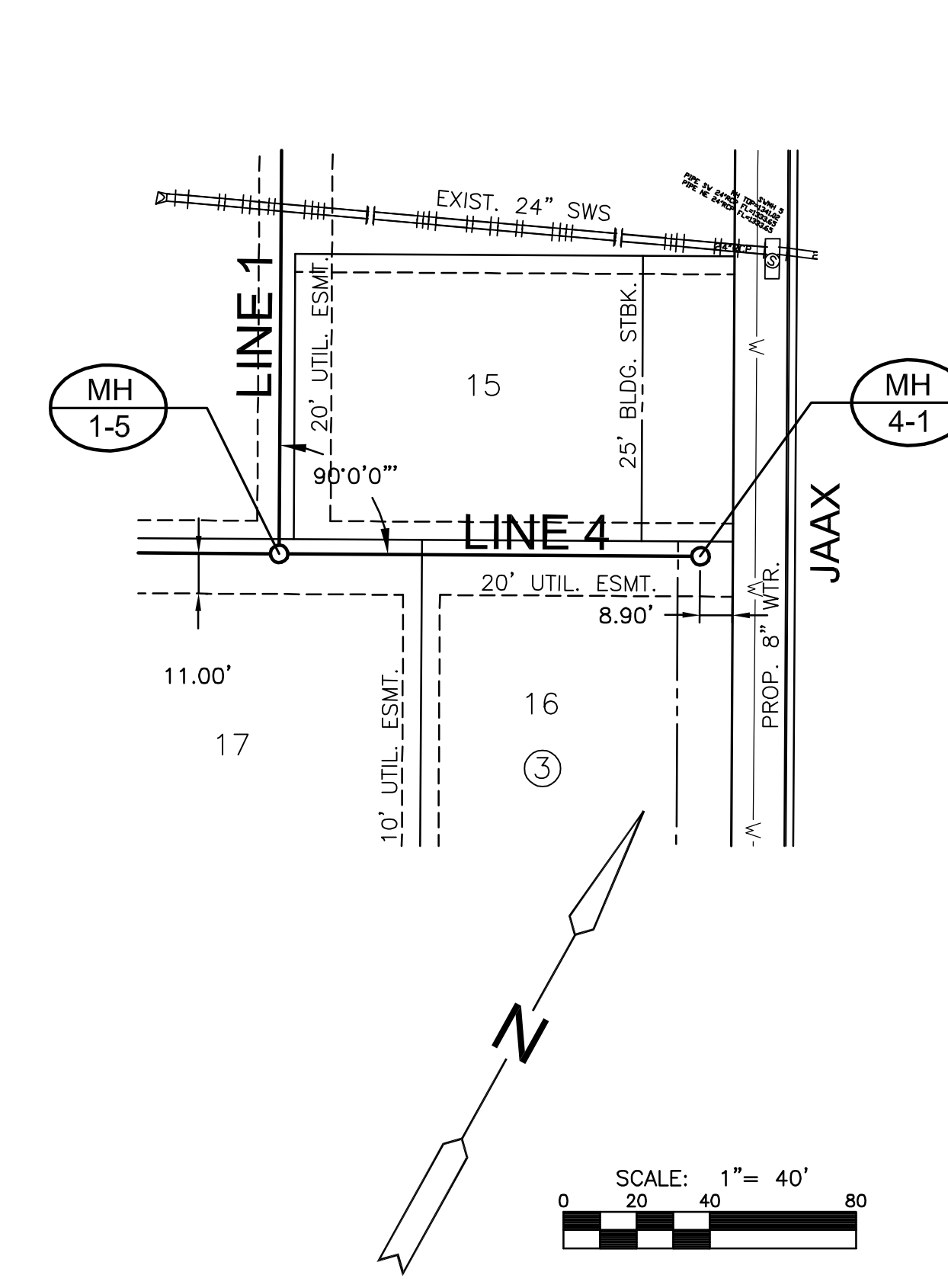


©2013 MKEC Engineering All Rights Reserved  
 These drawings and their contents, including, but not limited to, all concepts, designs, & ideas are the exclusive property of MKEC Engineering (MKEC), and may not be used or reproduced in any way without the express consent of MKEC.

**LINE 2, 3 & 4  
 PLAN &  
 PROFILE**

PROJECT NO.	468-84890	
DATE	AUGUST 2013	
SCALE	1"=40'	
DESIGNED	DRAWN	CHECKED
SPE	SPE	GJA
NO.	REVISION	DATE
SHEET NO.		



**NOTE:**  
 CONTRACTOR TO VERIFY THE DEPTH AND LOCATION OF EXISTING UTILITIES PRIOR TO CONSTRUCTION.

**CAUTION! DO NOT ENCRoACH ON PIPELINE EASEMENT**

REMOVE & REPLACE EXIST. RIPRAP AS NEEDED FOR CONSTRUCTION.

CONNECT TO EXIST. 8" STUB.

Riser #3, Line 3  
 Sta. 12+89  
 Dist. from Main to Riser = 14'Rt  
 Dist. from Upstream MH = 126'  
 Dist. from Downstream MH = 127'

Riser #1, Line 3  
 Sta. 10+58  
 Dist. from Main to Riser = 17'Rt  
 Dist. from Upstream MH = 103'  
 Dist. from Downstream MH = 58'

Riser #2, Line 3  
 Sta. 12+06  
 Dist. from Main to Riser = 14'Rt  
 Dist. from Upstream MH = 209'  
 Dist. from Downstream MH = 44'

Riser #4, Line 3  
 Sta. 13+74  
 Dist. from Main to Riser = 14'Rt  
 Dist. from Upstream MH = 212'  
 Dist. from Downstream MH = 41'

PLOTED: Saturday, August 03, 2013 @ 12:01PM

J:\PROJECTS\2013\13010386\_COW BAY COUNTRY DEVELOPMENTS\CIVIL\CAD\SAN\13386\_B3.DWG