

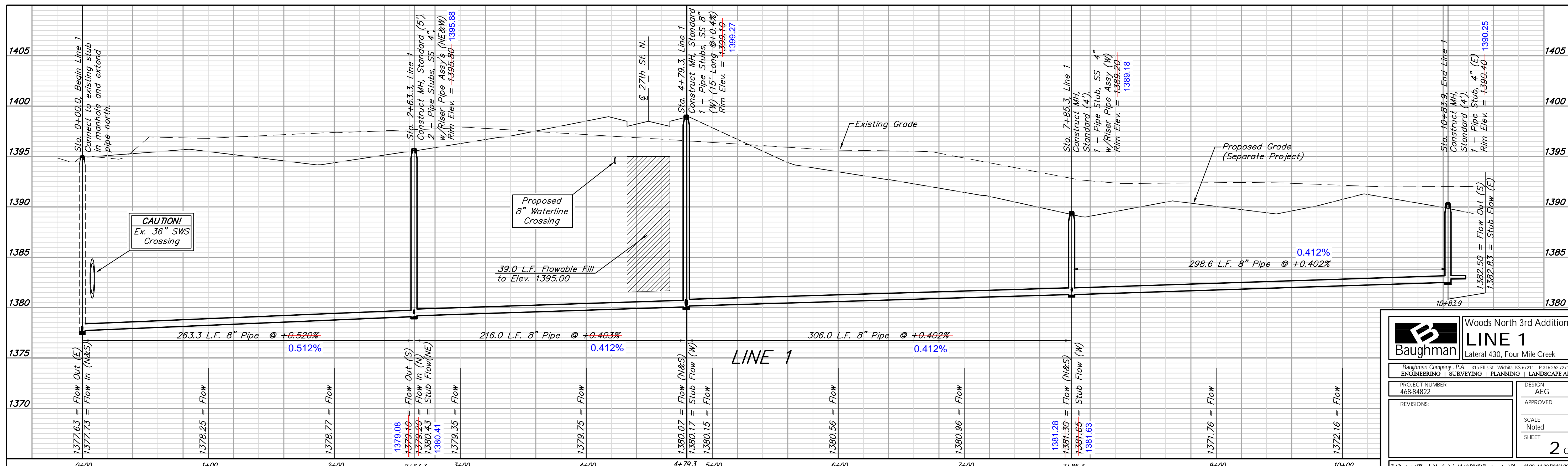
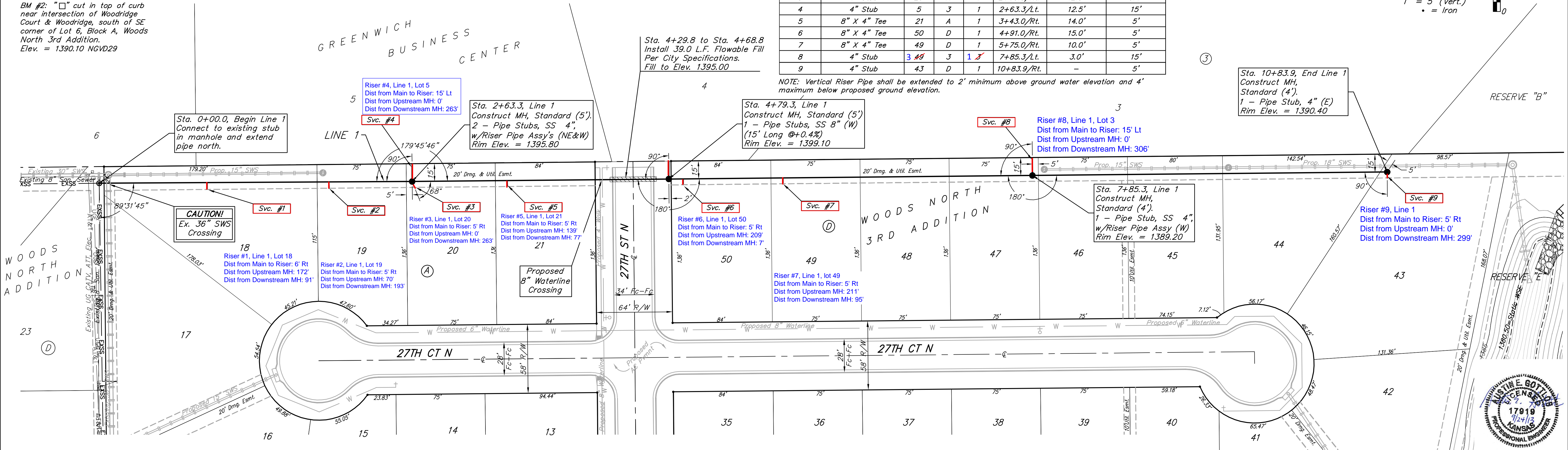
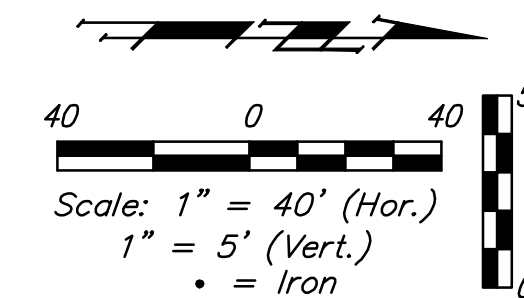
BENCHMARKS:
 BM #1: "□" cut in top of curb near intersection of 27th Street North & Woodridge, south of SE corner of Lot 24, Block C, Woods North 3rd Addition.
 Elev. = 1392.97 NGVD29

BM #2: "□" cut in top of curb near intersection of Woodridge Court & Woodridge, south of SE corner of Lot 6, Block A, Woods North 3rd Addition.
 Elev. = 1390.10 NGVD29

SEWER SERVICE TABLE

NUMBER	TYPE	LOCATION				FOR INFORMATION ONLY	
		LOT NO.	BLOCK NO.	LINE NO.	STATION/ DIRECTION	APPROXIMATE LENGTH 4" PIPE	VERTICAL
1	8" X 4" Tee	18	A	1	0+91.0/Rt.	14.0'	5.7'
2	8" X 4" Tee	19	A	1	1+93.0/Rt.	11.5'	5.3'
3	4" Stub	20	A	1	2+63.3/Rt.	12.5'	5.4'
4	4" Stub	5	3	1	2+63.3/Lt.	12.5'	15'
5	8" X 4" Tee	21	A	1	3+43.0/Rt.	14.0'	5'
6	8" X 4" Tee	50	D	1	4+91.0/Rt.	15.0'	5'
7	8" X 4" Tee	49	D	1	5+75.0/Rt.	10.0'	5'
8	4" Stub	3	4	1	7+85.3/Lt.	3.0'	15'
9	4" Stub	43	D	1	10+83.9/Rt.	-	5'

NOTE: Vertical Riser Pipe shall be extended to 2' minimum above ground water elevation and 4' maximum below proposed ground elevation.



Baughman Woods North 3rd Addition - Phase II
LINE 1
 Lateral 430, Four Mile Creek

Baughman Company, P.A. 315 Ellis St. Wichita, KS 67211 P 316.262.7211 F 316.262.0149
 ENGINEERING | SURVEYING | PLANNING | LANDSCAPE ARCHITECTURE

PROJECT NUMBER: 468-84822 DESIGN: AEG DRAWN: TMS
 APPROVED: DATE: 9/23/13
 REVISIONS: SCALE: Noted SHEET: 2 OF 14

E:\Projects\Woods North 3rd_11-12-13\Engineering\Phase 2\SS_13-08-8943\SS_13-08-8943 Plans.dwg