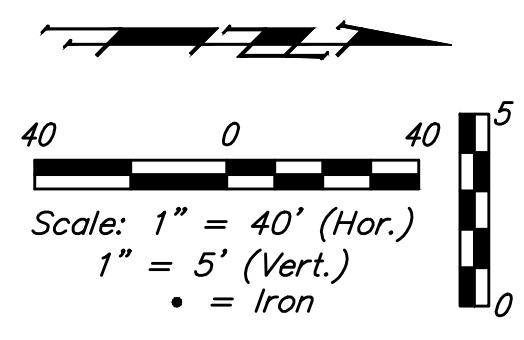
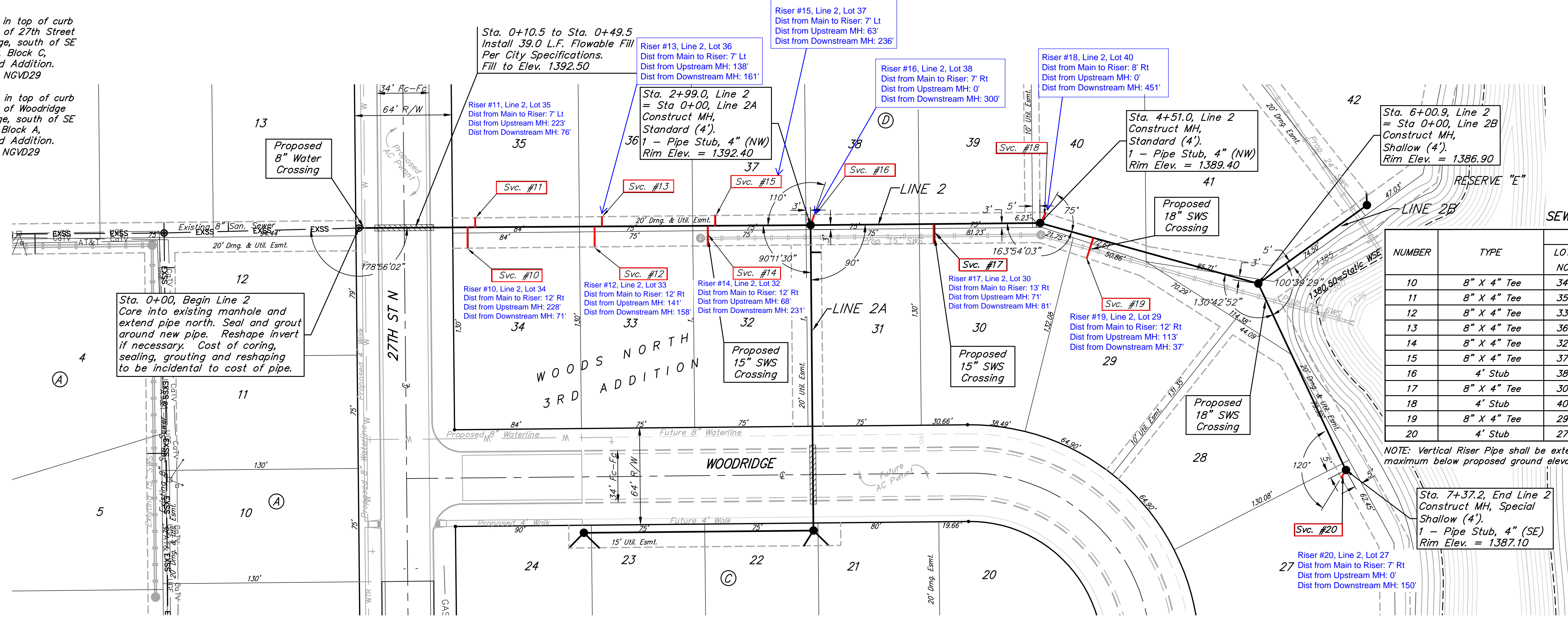


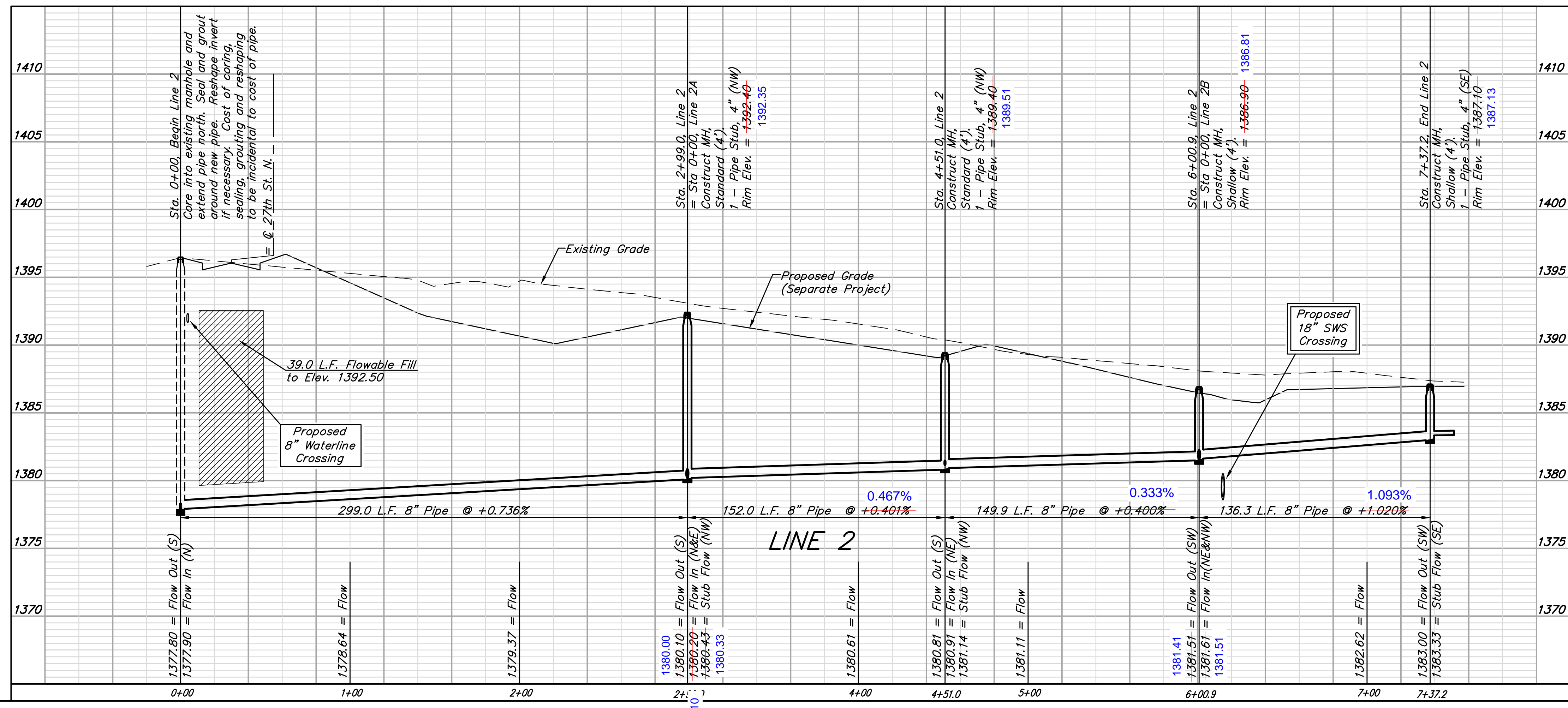
BENCHMARKS:
 BM #1: "□" cut in top of curb near intersection of 27th Street North & Woodridge, south of SE corner of Lot 24, Block C, Woods North 3rd Addition. Elev. = 1392.97 NGVD29
 BM #2: "□" cut in top of curb near intersection of Woodridge Court & Woodridge, south of SE corner of Lot 6, Block A, Woods North 3rd Addition. Elev. = 1390.10 NGVD29



SEWER SERVICE TABLE

NUMBER	TYPE	LOCATION			FOR INFORMATION ONLY	
		LOT NO.	BLOCK NO.	LINE NO.	STATION \ DIRECTION	APPROXIMATE LENGTH 4" PIPE
					VERTICAL	HORIZONTAL
10	8" X 4" Tee	34	D	2	0+72/Rt.	14.0' 13'
11	8" X 4" Tee	35	D	2	0+77/Lt.	14.0' 7'
12	8" X 4" Tee	33	D	2	1+56/Rt.	9.0' 13'
13	8" X 4" Tee	36	D	2	1+61/Lt.	9.0' 7'
14	8" X 4" Tee	32	D	2	2+31/Rt.	7.0' 13'
15	8" X 4" Tee	37	D	2	2+36/Lt.	7.0' 7'
16	4' Stub	38	D	2	2+99/Rt.	- 7'
17	8" X 4" Tee	30	D	2	3+81/Rt.	6.0' 13'
18	4' Stub	40	D	2	4+51.0/Rt.	- 7'
19	8" X 4" Tee	29	D	2	4+88/Rt.	5.0' 13'
20	4' Stub	27	D	2	7+37.2/Rt.	- 7'

NOTE: Vertical Riser Pipe shall be extended to 2' minimum above ground water elevation and 4' maximum below proposed ground elevation.



Baughman Woods North 3rd Addition - Phase II
LINE 2
 Lateral 430, Four Mile Creek

Baughman Company, P.A. 315 Ellis St. Wichita, KS 67211 P 316-262-7271 F 316-262-0149
 ENGINEERING | SURVEYING | PLANNING | LANDSCAPE ARCHITECTURE

PROJECT NUMBER: 468-84822
 DESIGN: AEG
 DRAWN: TMS
 APPROVED: [Signature]
 DATE: 9/23/13

REVISIONS:

SCALE: Noted
 SHEET: 3 OF 14

E:\Projects\Woods North 3rd_11-12-1841\Engineering\Phase 2\SS_13-08-0943\SS_13-08-0943 Plans.dwg