

CBB111-175MH
 Mounting Height= 3.5 feet.
 IES Candela File: BALL1036.IES
 Initial Lumens per Lamp= 15000.
 Light Loss Factor (LLF) = 0.72
 Number Luminaires this type = 4

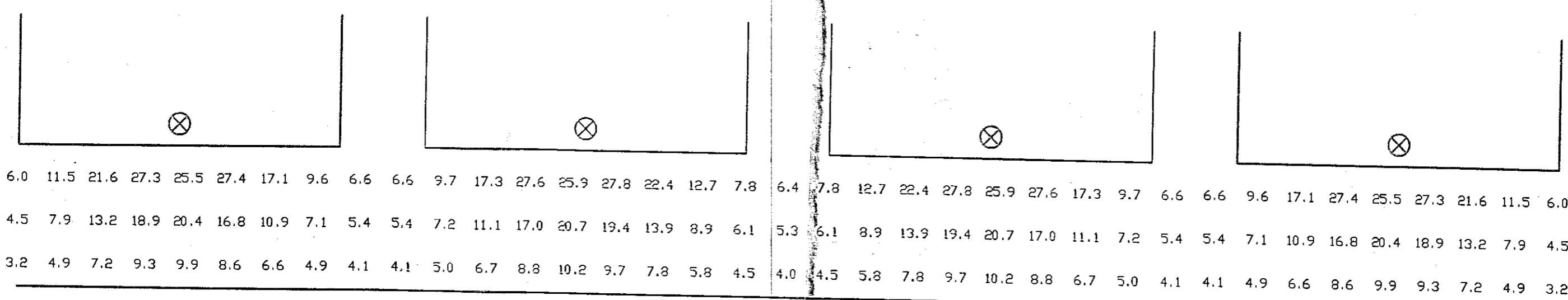
ILLUMINANCE IS IN HORIZONTAL FOOTCANDLES.
 TARGET PLANE AT Z = -6.85 FEET.

Summary

# POINTS	48
AVERAGE	9.8
MAXIMUM	14.4
MINIMUM	5.1
AVG/MIN	1.93
MAX/MIN	2.84
STD DEV	2.58
COEF VAR	0.26

NOTES
 1. THIS LIGHTING DESIGN IS BASED ON LIMITED INFORMATION SUPPLIED BY OTHERS TO DEVINE LIGHTING. SITE DETAILS PROVIDED HEREON ARE REPRODUCED ONLY AS VISUALIZATION AID. FIELD DEVIATIONS MAY SIGNIFICANTLY AFFECT PREDICTED PERFORMANCE AND ARE NOT DEVINE'S RESPONSIBILITY. CRITICAL SITE INFORMATION SHOULD BE OBTAINED FROM THE CONTRACTOR AND/OR SPECIFIER RESPONSIBLE FOR THE PROJECT.
 2. LUMINAIRE DATA IS TESTED TO INDUSTRY STANDARDS UNDER LABORATORY CONDITIONS. OPERATING VOLTAGE AND NORMAL MANUFACTURING TOLERANCES OF LAMP, BALLAST, AND LUMINAIRE WILL AFFECT FIELD RESULTS.
 3. CODE COMPLIANCE, TO INCLUDE 'ENERGY, LIFE SAFETY, LIGHT TRESPASS, ELECTRICAL, STRUCTURAL AND LOCAL REQUIREMENTS', ARE THE SPECIFIER'S RESPONSIBILITY

DEVINE LIGHTING ONE DESIGN DRIVE, NORTH KANSAS CITY, MISSOURI 64116 TELE: (816)221-9440 FAX: (816)221-3868	CLIENT: MERCER ZIMMERMAN		
	PROJECT NO.: N/A	DRWN: JGR	DATE: 5/15/00
	OTHER: PROPOSAL #1		APPVD: DATE:
	PROJECT NAME: HYATT WATERWALK WICHITA, KS		SCALE: 1"=5'-0"
		DRWG. NO: 1610C.DWG	



CBB111-175MH
 Mounting Height= 35 feet.
 IES Candela File: BALL1036.IES
 Initial Lumens per Lamp= 15000.
 Light Loss Factor (LLF) = 0.72
 Number Luminaires this type = 4

ILLUMINANCE IS IN HORIZONTAL FOOTCANDLES.
 TARGET PLANE AT Z = 0 FEET.

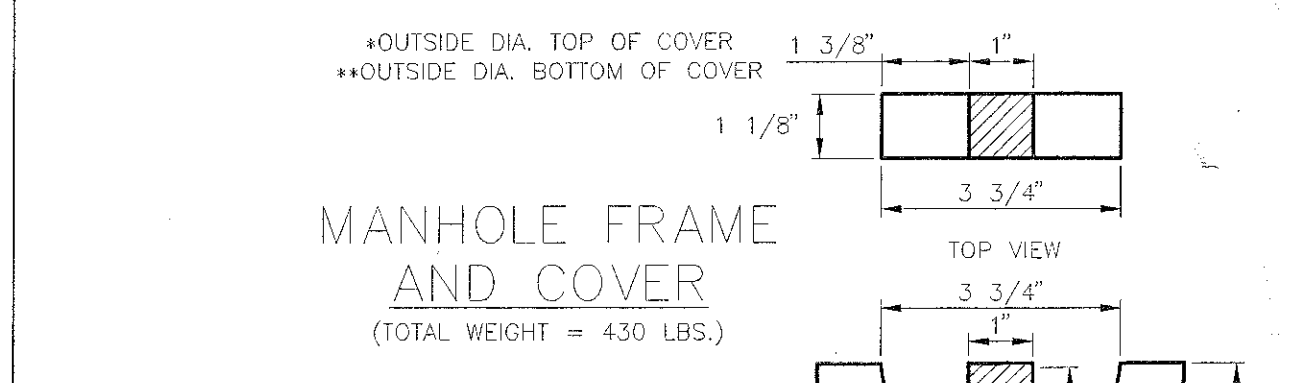
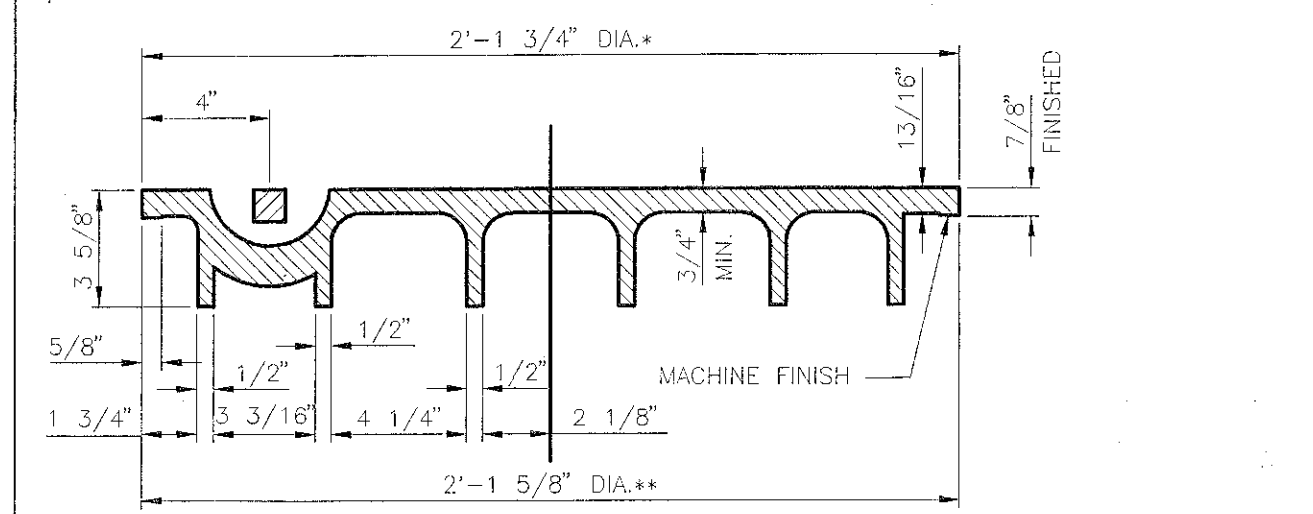
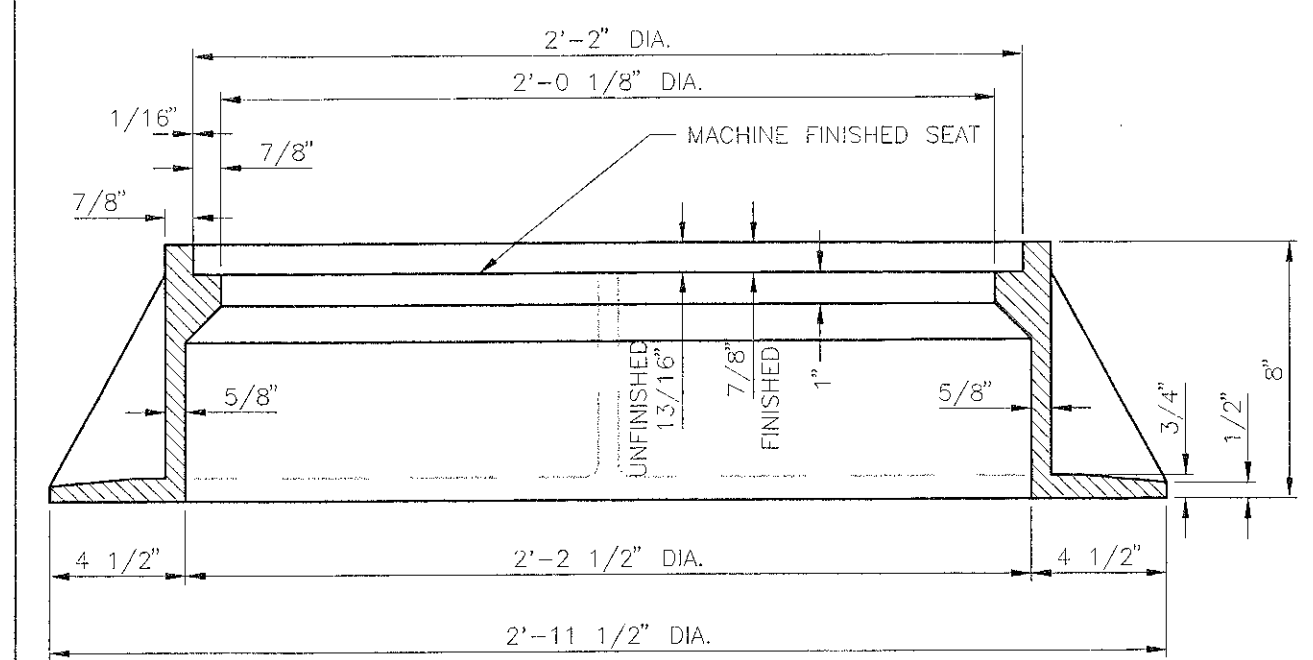
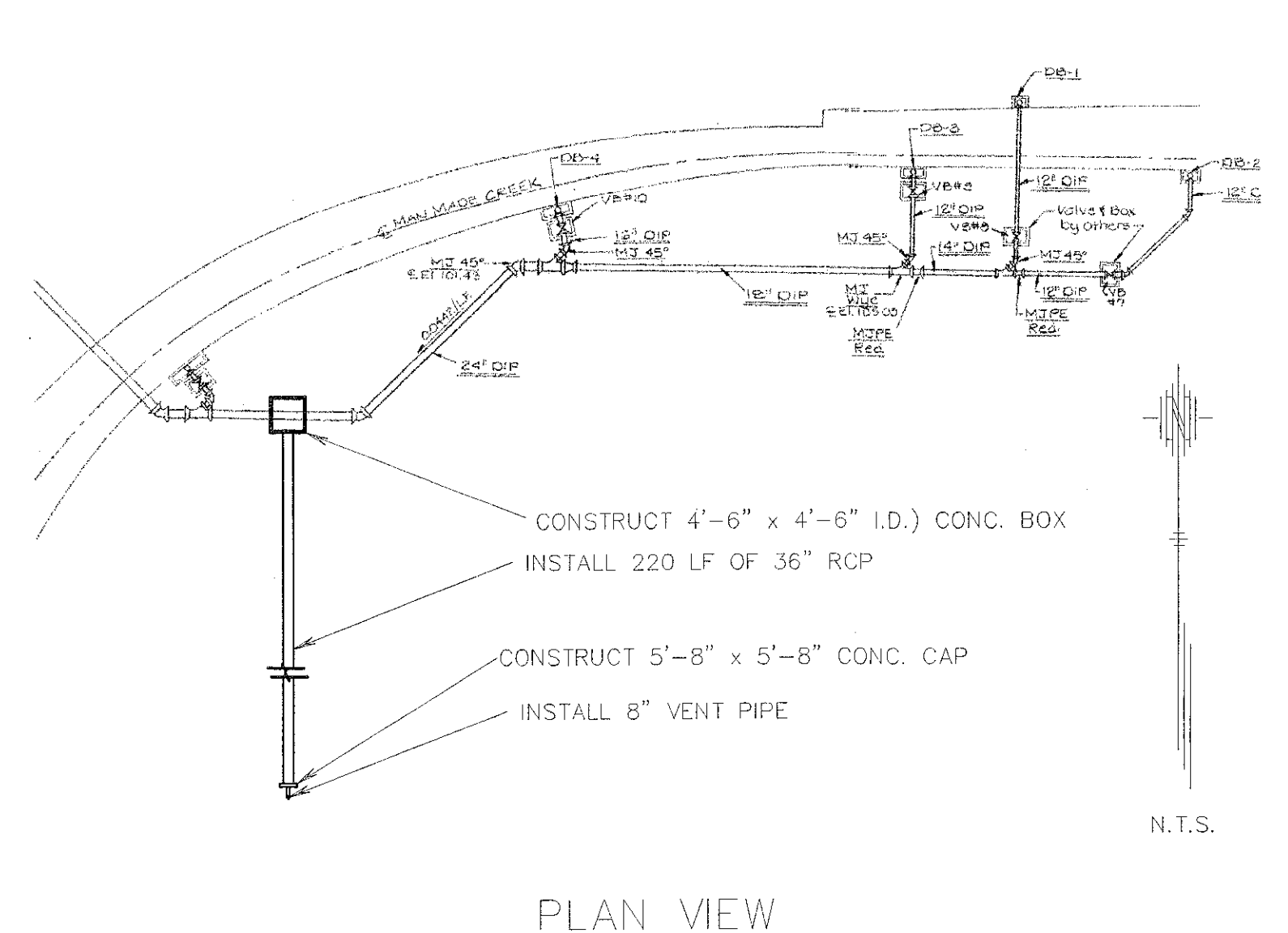
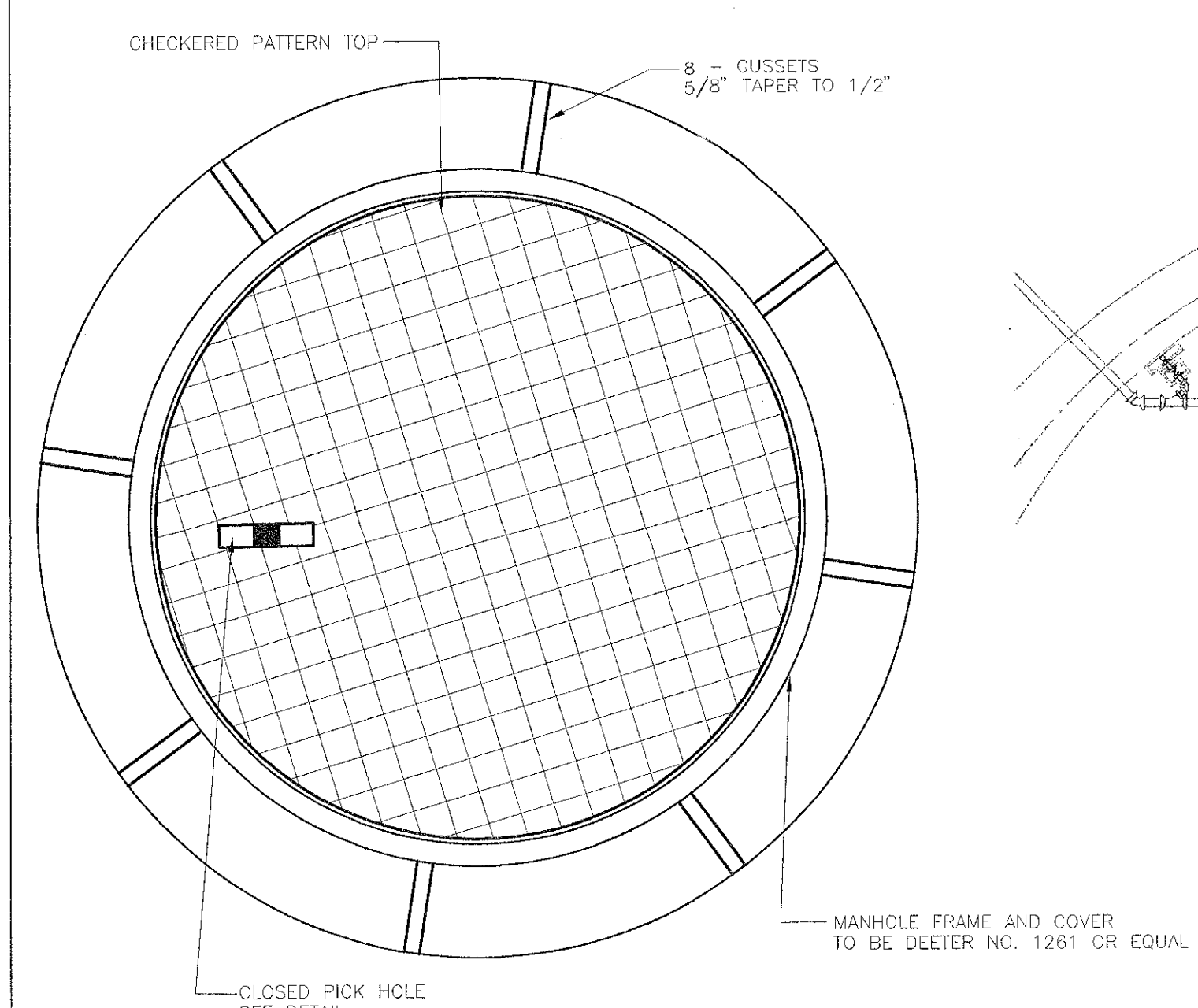
Summary

# POINTS	111
AVERAGE	11.8
MAXIMUM	27.8
MINIMUM	3.2
AVG/MIN	3.74
MAX/MIN	8.83
STD DEV	7.27
COEF VAR	0.62

DEVINE LIGHTING ONE DESIGN DRIVE, NORTH KANSAS CITY, MISSOURI 64116 TELE: (816)221-9440 FAX: (816)221-3868	CLIENT: MERCER ZIMMERMAN		
	PROJECT NO.: N/A	DRWN: JGR	DATE: 5/15/00
	OTHER: PROPOSAL #1	APPVD:	DATE:
	SCALE: 1"=5'-0"		
PROJECT NAME: HYATT WATERWALK WICHITA, KS		DRWG. NO: 1610B.DWG	

1. THIS LIGHTING DESIGN IS BASED ON LIMITED INFORMATION SUPPLIED BY OTHERS TO DEVINE LIGHTING. SITE DETAILS PROVIDED HEREON ARE REPRODUCED ONLY AS VISUALIZATION AID. FIELD DEVIATIONS MAY SIGNIFICANTLY AFFECT PREDICTED PERFORMANCE AND ARE NOT DEVINE'S RESPONSIBILITY. CRITICAL SITE INFORMATION SHOULD BE OBTAINED FROM THE CONTRACTOR AND/OR SPECIFIER RESPONSIBLE FOR THE PROJECT.
 2. LUMINAIRE DATA IS TESTED TO INDUSTRY STANDARDS UNDER LABORATORY CONDITIONS. OPERATING VOLTAGE AND NORMAL MANUFACTURING TOLERANCES OF LAMP, BALLAST, AND LUMINAIRE WILL AFFECT FIELD RESULTS.
 3. CODE COMPLIANCE, TO INCLUDE 'ENERGY, LIFE SAFETY, LIGHT TRESPASS, ELECTRICAL, STRUCTURAL AND LOCAL REQUIREMENTS', ARE THE SPECIFIER'S RESPONSIBILITY

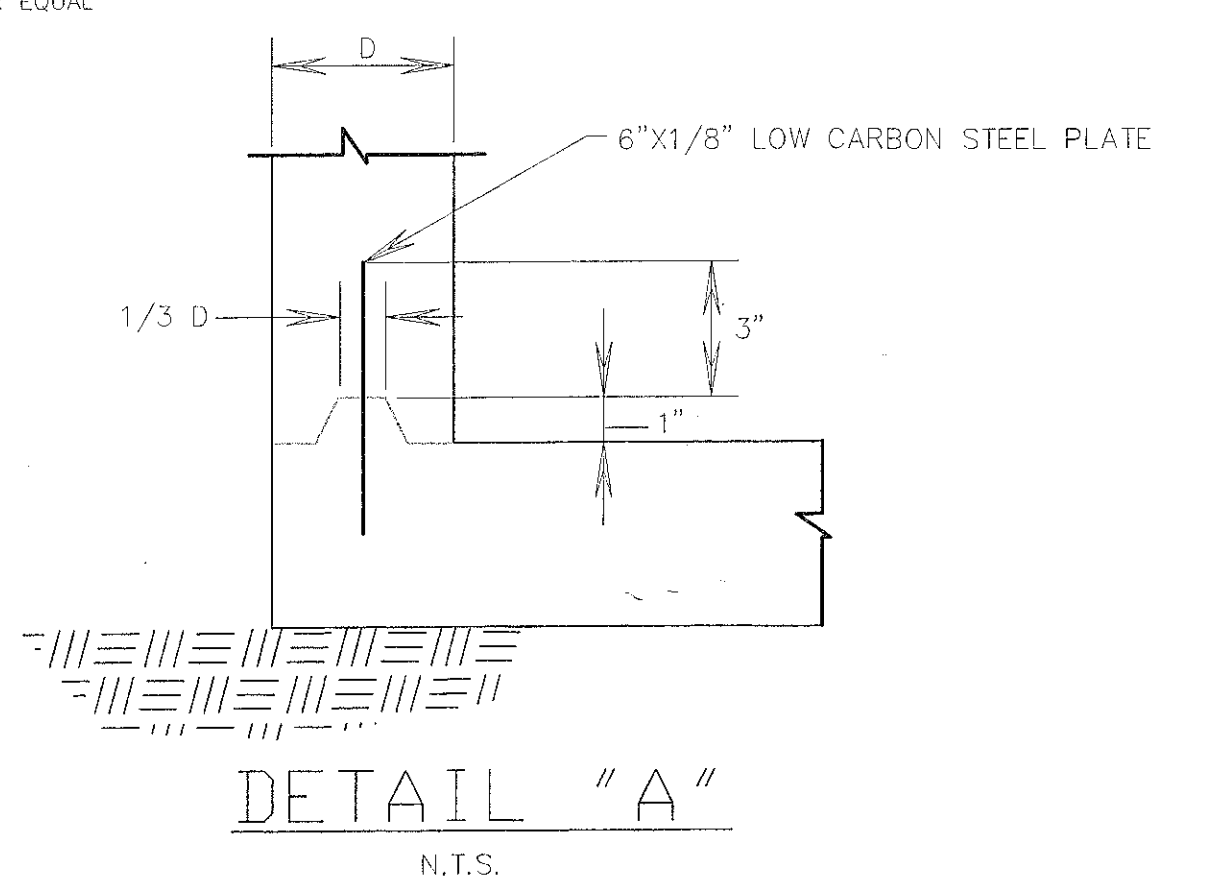
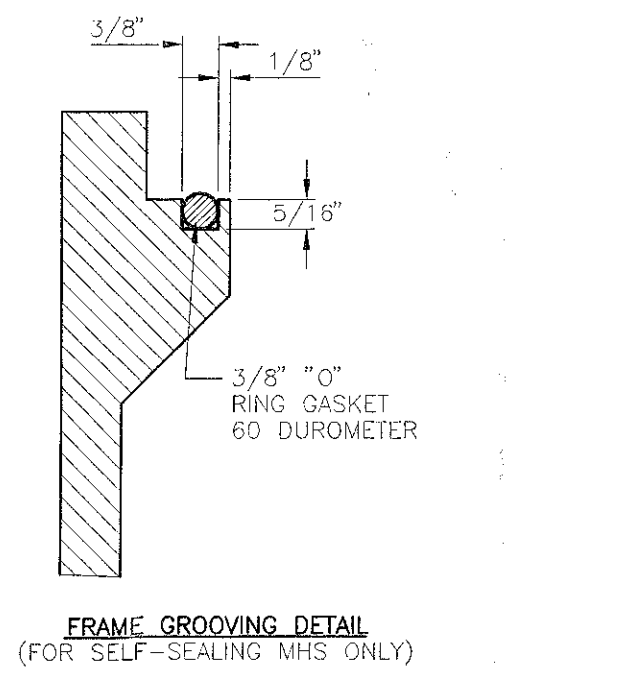
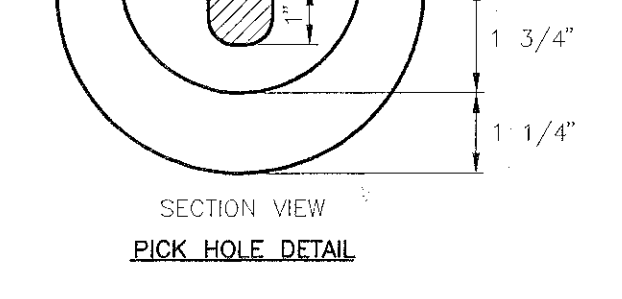
BENCHMARK IS BOTTOM FLOOR OF PUMP VAULT. ELEV.=89.50



MANHOLE FRAME AND COVER (TOTAL WEIGHT = 430 LBS.)

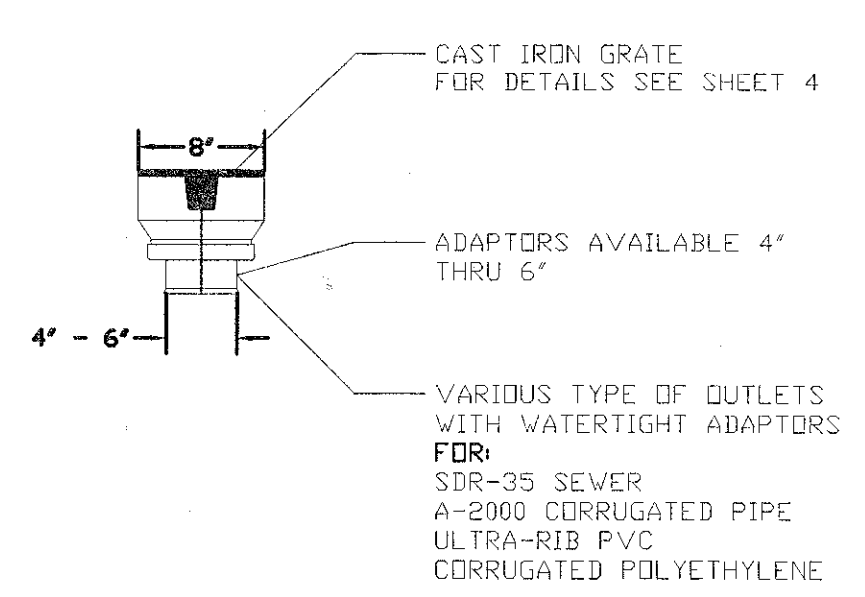
MANHOLE FRAME AND COVER NOTES

1. CAST IRON MANHOLE FRAME AND COVER SHALL CONFORM TO ASTM A-48, CLASS 30, OR BETTER.
2. THE FRAMES AND COVERS SHALL BE OF A NON-SHRINKING TYPE OR WITH BEARING SURFACES SO FITTING PARTS WILL NOT RATTLE OR ROCK UNDER TRAFFIC.
3. MANHOLE CASTINGS SHALL BE DEETER FOUNDRY INC. NO. 1261 OR APPROVED EQUAL, UNLESS OTHERWISE SPECIFIED IN THE SPECIAL CONDITIONS. (MINIMUM WT.-430 LBS.) ALL MANHOLE CASTINGS, REGARDLESS OF TYPE, SHALL BE CONSIDERED SUBSIDIARY TO THE UNIT PRICES BID FOR THE VARIOUS MANHOLE TYPES.
4. GRIND ALL BURRS SMOOTH, CLEAN THOROUGHLY, THEN APPLY SHOP COAT OF ASPHALT BASE PAINT.
5. THE MANUFACTURER SHALL SUBMIT SHOP DRAWINGS TO THE ENGINEER FOR APPROVAL PRIOR TO MANUFACTURE. THE ENGINEER SHALL RETAIN THE RIGHT TO REJECT CASTINGS NOT CONFORMING TO THE SPECIFICATIONS OR THE APPROVED SHOP DRAWINGS.
6. WHERE SELF-SEALING MANHOLE FRAMES ARE SPECIFIED ON THE PLANS, THE MANHOLE FRAME SHALL BE FURNISHED WITH AN APPROVED "O" RING GASKET GROOVED INTO THE BEARING SURFACE OF THE MANHOLE FRAME (PER DETAIL). THE "O" RING GASKET SHALL NOT BE INSTALLED IN THE MANHOLE FRAME UNTIL AFTER FINAL INSPECTION AND ACCEPTANCE OF THE PROJECT BY THE ENGINEER. THE CONTRACTOR SHALL SUPPLY TO THE OWNER ONE (1) REPLACEMENT "O" RING GASKET FOR EACH SELF-SEALING MANHOLE SPECIFIED.

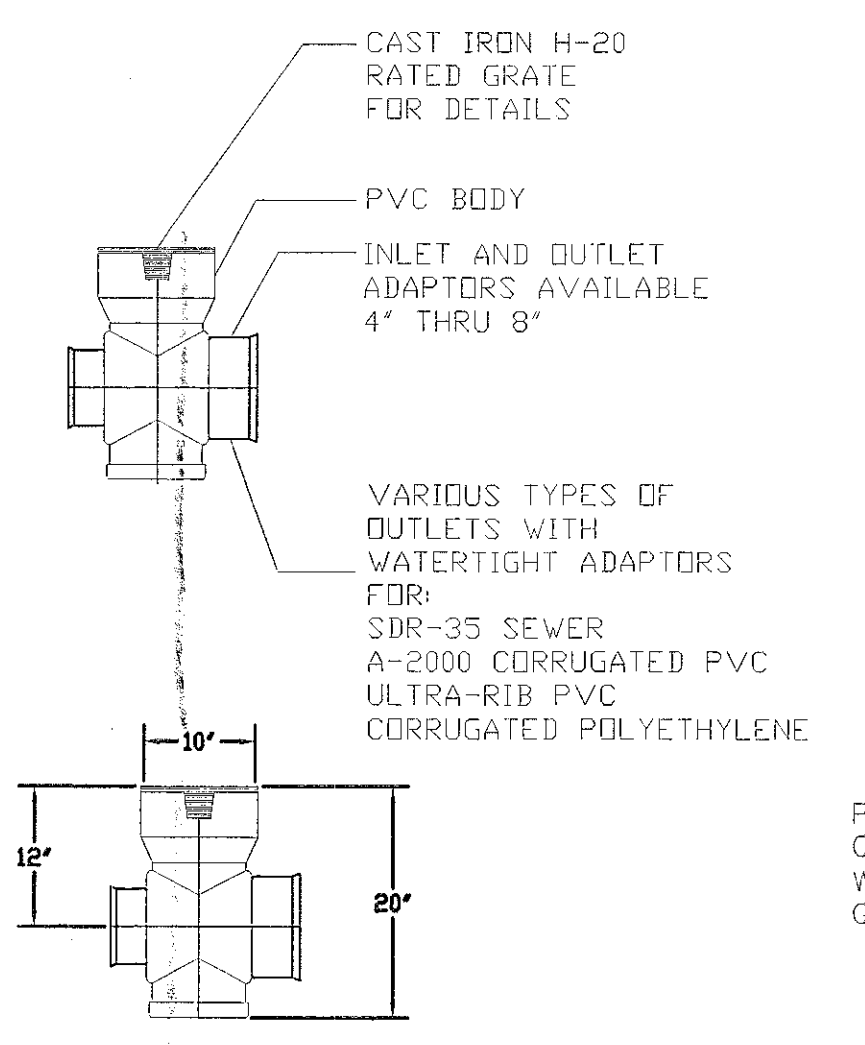


GENERAL NOTES - PRECAST MANHOLE NOTES

1. ALL PRECAST CONCRETE MANHOLE SECTIONS SHALL CONFORM TO THE LATEST REVISIONS OF A.S.T.M. C478 AS MODIFIED BY THE SPECIFICATIONS.
2. NON-SHRINK GROUT SHALL BE NON-METALLIC TYPE.
3. APPROVED FLEXIBLE WATERSTOP GASKETS SHALL BE INSTALLED TO JOIN THE SEWER TO THE MANHOLE WALL WHEN A.B.S. COMPOSITE PIPE OR P.V.C. PIPE IS USED. FOR OTHER TYPES OF PIPE THE SEWER SHALL BE GROUTED IN PLACE WITH NON-SHRINK GROUT. THE SEWER PIPE SHALL BE SUPPORTED WITH CONCRETE ENCASEMENT A MINIMUM OF 3 FEET FROM THE MANHOLE WALL AND TO THE FIRST JOINT FOR V.C.P., SUCH THAT THE JOINT REMAINS FLEXIBLE.
4. EXTERIOR MANHOLE WALLS AND GROUT SHALL BE COATED WITH 1 COAT MOBILARMA 633 BITUMINOUS COATING.
5. JOINT SEALING COMPOUND SHALL BE KENT SEAL NO. 2 OR APPROVED EQUAL.
6. PRECAST MANHOLES SHALL BE SET AT LEAST 4 INCHES INTO THE MANHOLE BOX TOP.
7. LIFTING HOLES SHALL BE FILLED WITH NON-SHRINK GROUT AND THE INTERIOR SURFACE COATED AS SPECIFIED.
8. MORTAR USED IN MASONRY CONSTRUCTION SHALL CONTAIN 8 SACKS OF CEMENT PER CUBIC YARD. CONCRETE USED IN MANHOLE BASES SHALL CONFORM TO THE REQUIREMENTS OF CONCRETE FOR CONCRETE PAVEMENT CONSTRUCTION AS SPECIFIED IN THE CITY STANDARD PAVING SPECIFICATIONS USING CITY CONCRETE PAVEMENT MIX WITHOUT AIR ENTRAINING ADMIXTURE. MORTAR SHALL BE PLACED AROUND THE MANHOLE RING AS SHOWN ON THE DRAWINGS WHEN MANHOLES ARE CONSTRUCTED IN UNPAVED AREAS. MANHOLES CONSTRUCTED WHERE PIPE SIZES ARE SMALLER THAN 24" SHALL HAVE AN INSIDE DIAMETER OF 4". MANHOLES CONSTRUCTED WHERE PIPE SIZES ARE 24" OR LARGER SHALL HAVE AN INSIDE DIAMETER OF 5". COMPLETED MANHOLE SHALL BE WITHOUT LEAKS AND WATER TIGHT.
9. MANHOLE COVER CASTINGS AND MANHOLE FRAME CASTINGS SHALL CONFORM TO THE REQUIREMENTS AS INDICATED IN THE STANDARD SPECIFICATIONS AND AS SHOWN IN THE STANDARD DETAIL DRAWING.
10. A BRICK MASONRY COLLAR SHALL BE INSTALLED BETWEEN THE CAST IRON FRAME AND THE CONCENTRIC CONE. THE COLLAR WILL HAVE 8" WALLS AND A VERTICAL HEIGHT OF 16". A 1" COAT OF MORTAR WILL BE PLASTERED ON THE OUTSIDE OF THE COLLAR.



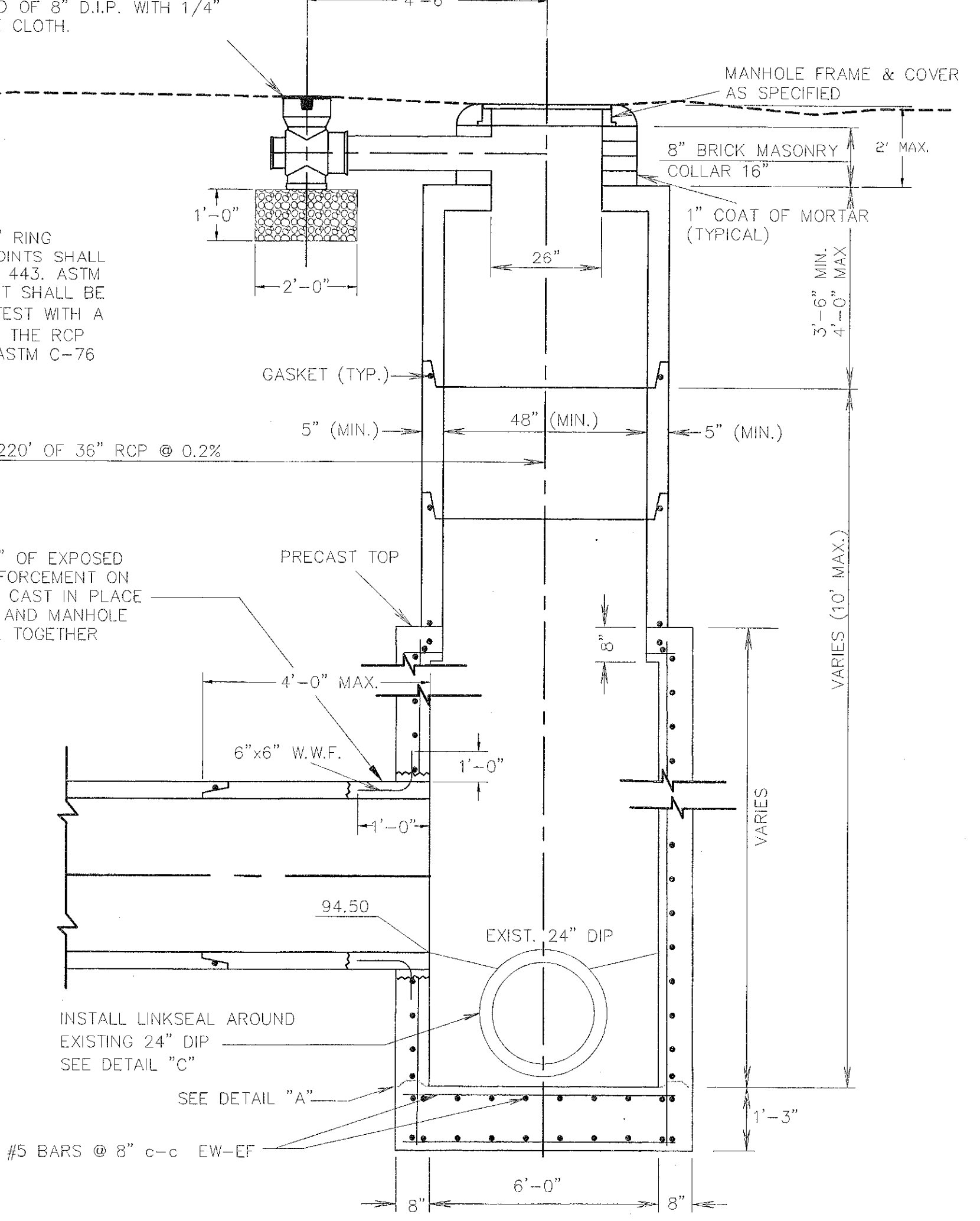
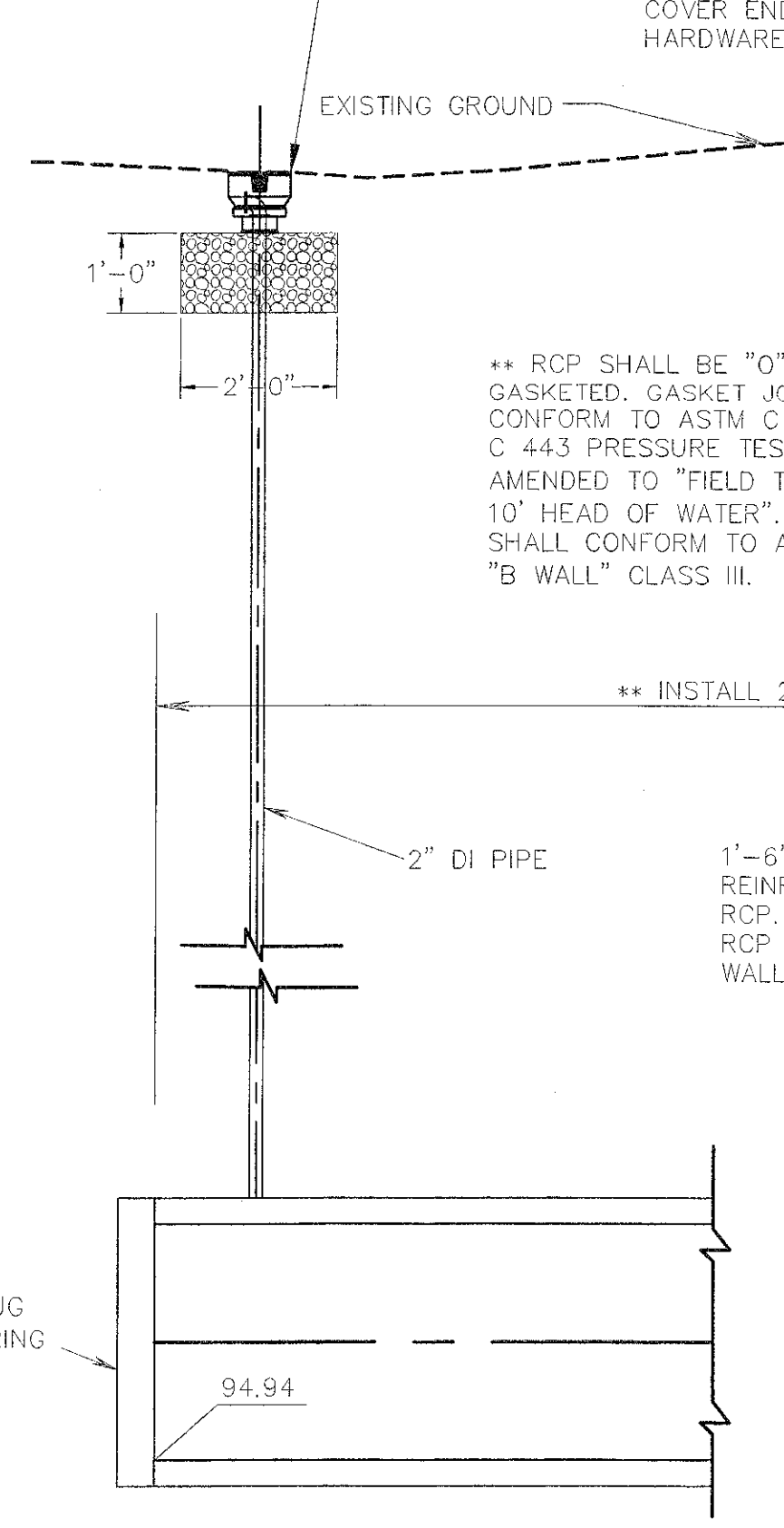
8" INLINE DRAIN



10" DRAIN BASIN

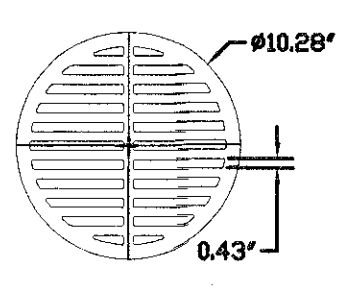
INSTALL 8" "NYLOPLAST INLINE DRAIN". EXTEND 2" D.I.P. INTO INLINE DRAIN. INSTALL 2"x2"x1" GRAVEL DRAINAGE BED BELOW BASIN. COVER END OF 2" D.I.P. WITH 1/4" HARDWARE CLOTH.

INSTALL 10" "NYLOPLAST DRAINAGE BASIN". CONNECT 8" D.I.P. TO DRAINAGE BASIN. PLUG OUTFLOW CONNECTION. FABRICATE 4" DIA. HOLE IN BASE OF BASIN. INSTALL 2"x2"x1" GRAVEL DRAINAGE BED BELOW BASIN. COVER END OF 8" D.I.P. WITH 1/4" HARDWARE CLOTH.



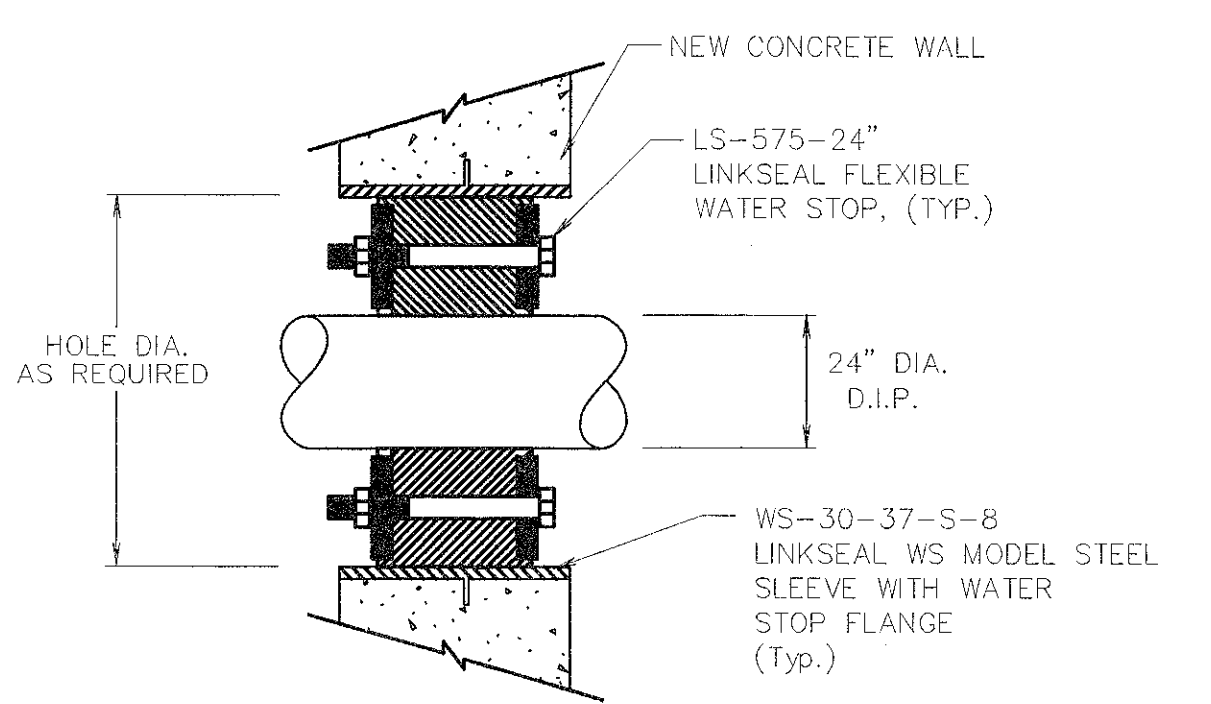
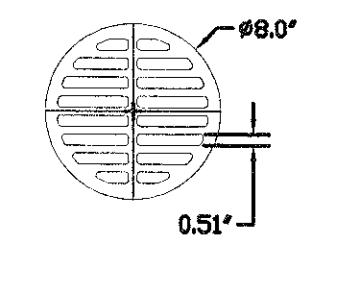
10" CAST IRON GRATE

DRAINAREA = 29.7 SQ. INCH
CASTINGS ARE RATED FOR LIGHT WHEEL LOAD TRAFFIC
QUALITY: MATERIAL SHALL CONFORM TO ASTM A48 - CLASS 30B
PAINT: CASTINGS ARE FURNISHED WITH A BLACK PAINT

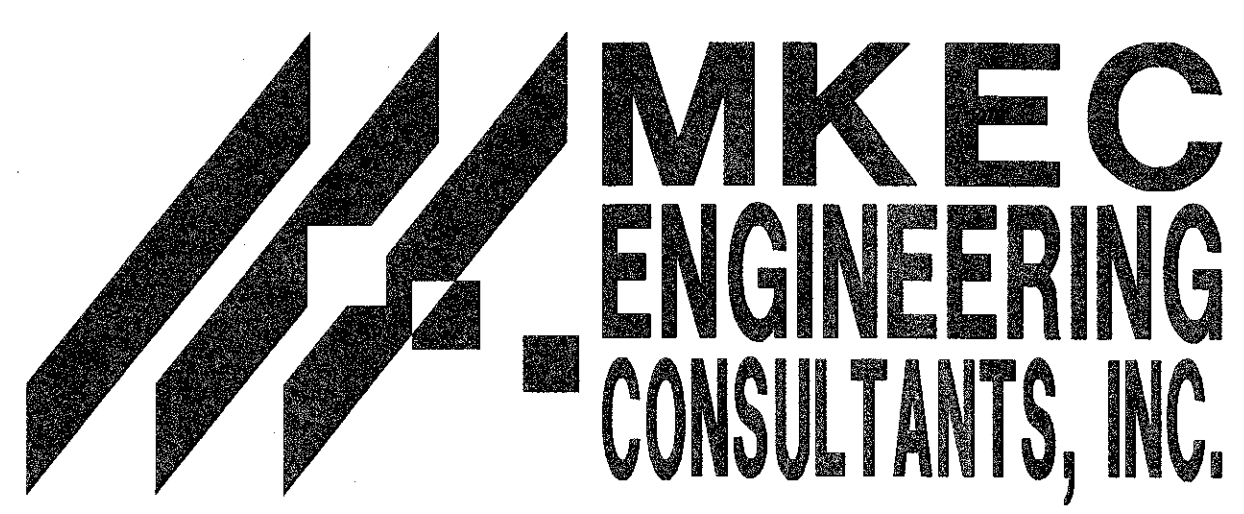


8" CAST IRON GRATE

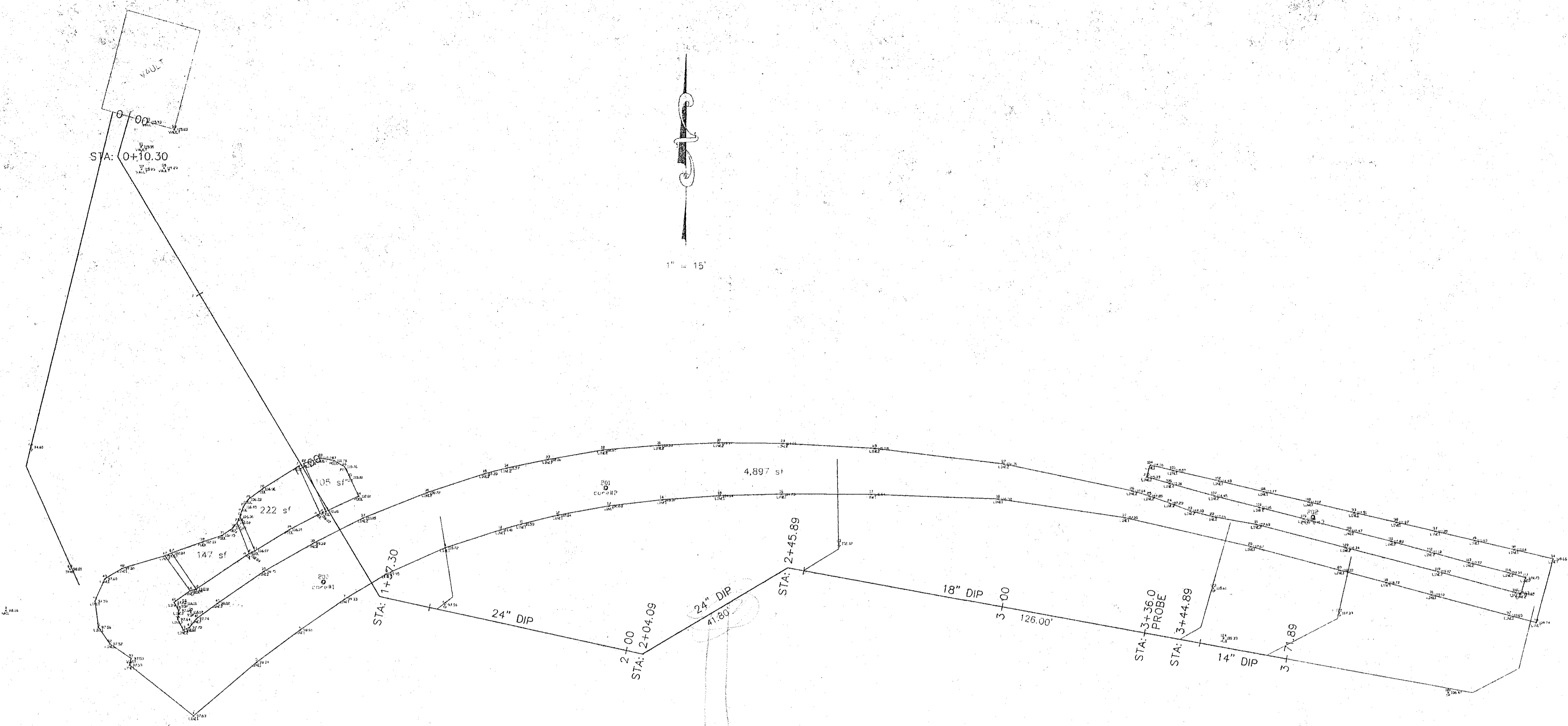
DRAINAREA = 20.3 SQ. INCH
CASTINGS ARE RATED FOR LIGHT WHEEL LOAD TRAFFIC
QUALITY: MATERIAL SHALL CONFORM TO ASTM A48 - CLASS 30B
PAINT: CASTINGS ARE FURNISHED WITH A BLACK PAINT



DETAIL "C" N.T.S.



WICHITA WATER WALK		
PROJECT NAME		
WATER STORAGE SYSTEM		
SHEET TITLE		
KJS	RSB	KJS
DESIGN BY:	DRAWN BY:	CHECKED BY:
6/2000	00127	1 / 1
DATE	JOB NO.	SHEET/OF
H:\CIVIL\HYATT\DWG\RCD.BWG 06/07/2000 04:42:24 PM CDT		



PLAN 1" = 15'
 PROFILE 1" = 15' HORIZ.
 1" = 2' VERT.

