

STORMWATER DRAIN IMPROVEMENTS to serve

Parcel No. 104

Part of LOT 3 (Wichita Children's Home - Bridges Apt.)

Private Project: 196 PPD (607861)

CITY OF WICHITA, KANSAS

Gary Janzen, P.E., City Engineer

August 2013

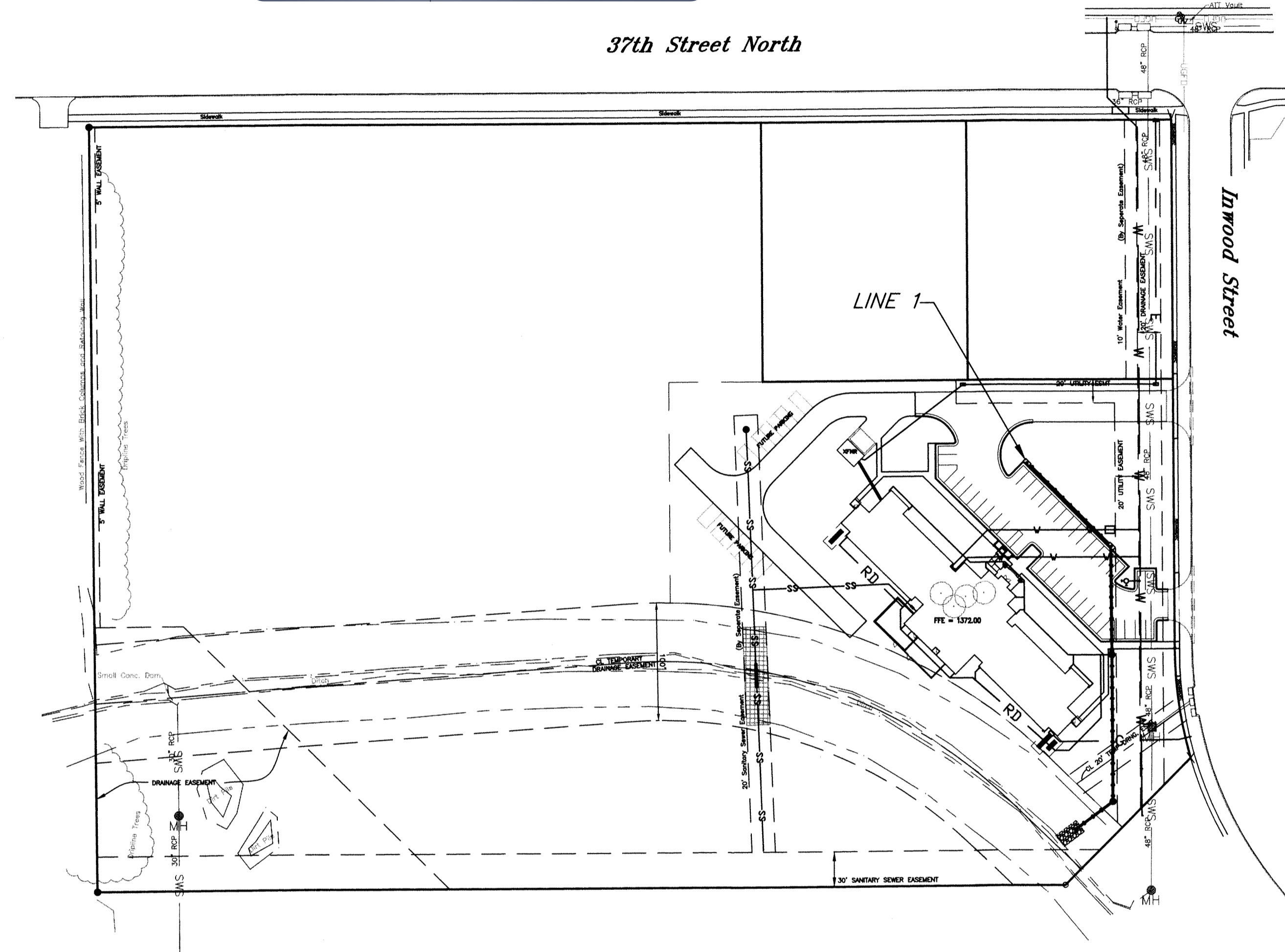
General Notes

- Contractor will be required to provide notice to utility companies a minimum of forty-eight (48) hours prior to any excavation, as follows:

Kansas One-Call	687-2470
Cox Communications	262-4270
Kansas Gas Service	1-888-482-4950
Westar Energy	383-8650
Black Hills Energy (Gas)	1-800-303-0357
ATT	268-2245
City of Wichita Water Dept.	268-4563
City of Wichita Sewer Maint.	268-4024
City of Wichita Storm Sewer Maint.	268-4090
City of Wichita Traffic Maint.	268-4034

The Contractor must notify the following in case of an emergency:
- Utility service lines, poles, valve boxes, meters, and etcetera are to be adjusted as necessary by others prior to construction unless the plans specifically call for their adjustment by the Contractor or unless the plans specifically identify a utility to be adjusted by its owner during construction. Existing utilities and their location, as shown on the plans, represent the best information obtainable for design. The Contractor will be required to work around existing utilities within the right-of-way which do not conflict with proposed construction.
- All disturbed R/W areas not intended for pavement or sidewalk construction shall be seeded with Kansas Premium Fescue Blend at a rate of 8 lb./1000 Sq. Ft., fertilized with a 16-20-6 ratio at a rate of 4 lb./1000 Sq. Ft., and mulched with Prairie Hay at a rate of 92 lb./1000 Sq. Ft. Mulch shall be "patted" with forks or punched into soil to reduce loss due to wind.
- Rubble from the removal of miscellaneous structures and excess excavation which is to be wasted shall be disposed of on sites to be provided by the Contractor. These sites shall be approved by the Engineer as to suitability, appearance and site location. Locations, in the opinion of the Engineer, that will leave an unsightly appearance will not be approved. All disposal sites must be approved by the Kansas Department of Health and Environment. Material either stockpiled or disposed of in a flood plain would require a Kansas State Board of Agriculture permit. Any material dumped in waters of the United States or wetlands is subject to U.S. Corps. of Engineers permitting regulations. Any material buried or stockpiled beyond approved construction limits would require additional archaeological investigations unless buried in a previously approved borrow location.
- Contractor shall furnish the inspector with a copy of the manufacturer's certification for any pipe used on this project after completion of pipe installation. The engineer will not certify the project to the city until pipe certification has been received.
- Trees and shrubs in public right-of-way which are in direct conflict with proposed new construction shall be removed by the Contractor with the Engineer's approval. Trees and shrubs which are not in direct conflict with proposed new construction shall be saved and protected from damage.
- All sewer lines and appurtenances shall be installed in accordance with the most recent edition of City of Wichita, Kansas Standard Specifications for the Construction of City Projects.
- Contractor shall not start work on the project until the project inspector is assigned to the project and is present on the site. Contractor shall not start on the project until all necessary bonds and permits have been obtained. Bonds may include but are not limited to Statutory, Performance & Maintenance. Any work done without inspection will be required to be uncovered for inspection.

AS BUILTS	
Contractor: McCullough Excavation, Inc. 3/19/2014	Project Inspector: Larry Gann KEMILLER ENGINEERING PA. 117 E. Lewis, Wichita, KS 67202 (316)264-0242



BENCHMARK

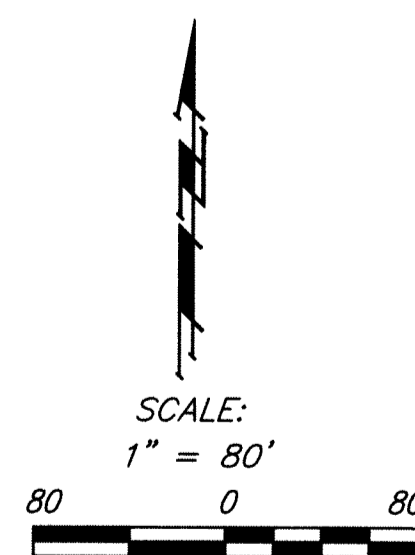
Benchmark - City of Wichita disc 36th Street North and Inwood, Northwest corner of hubguard on RCBC, south of 37th St.
Elevation = 1371.17 (NAVD 88)

LEGAL DESCRIPTION

Part of Lot 3, Block 1, Parcel No. 104, an addition to Wichita Sedgwick County, Kansas.

Stormwater Narrative (Summary)

This site complies with Chapter 16.32 of the City Code. The proposed site is 13.56 ac. with only 2.59 being developed now. The site drains to an existing onsite drainage ditch that is sized for a much larger storm than the 1-2 year. Therefore, no downstream (CPV) protection is required since the site will not over-top the banks. No detention is required due to the fact that since the overall drainage basin is so large (800 ac.), that slowly releasing the developed site will actually (slightly) increase the later peak flow. Therefore, the site requires only Water Quality.



Index

Title Sheet	1
Line 1	2
ERU Plan	3
Hydroworks HG4 Detail	4
Type 1 Curb Inlet Detail	5
Standard Manhole Detail	6
Reference Grading Plan	7
Reference Erosion Control Plan	8
Copy of Plat	9

Stormwater Compliance

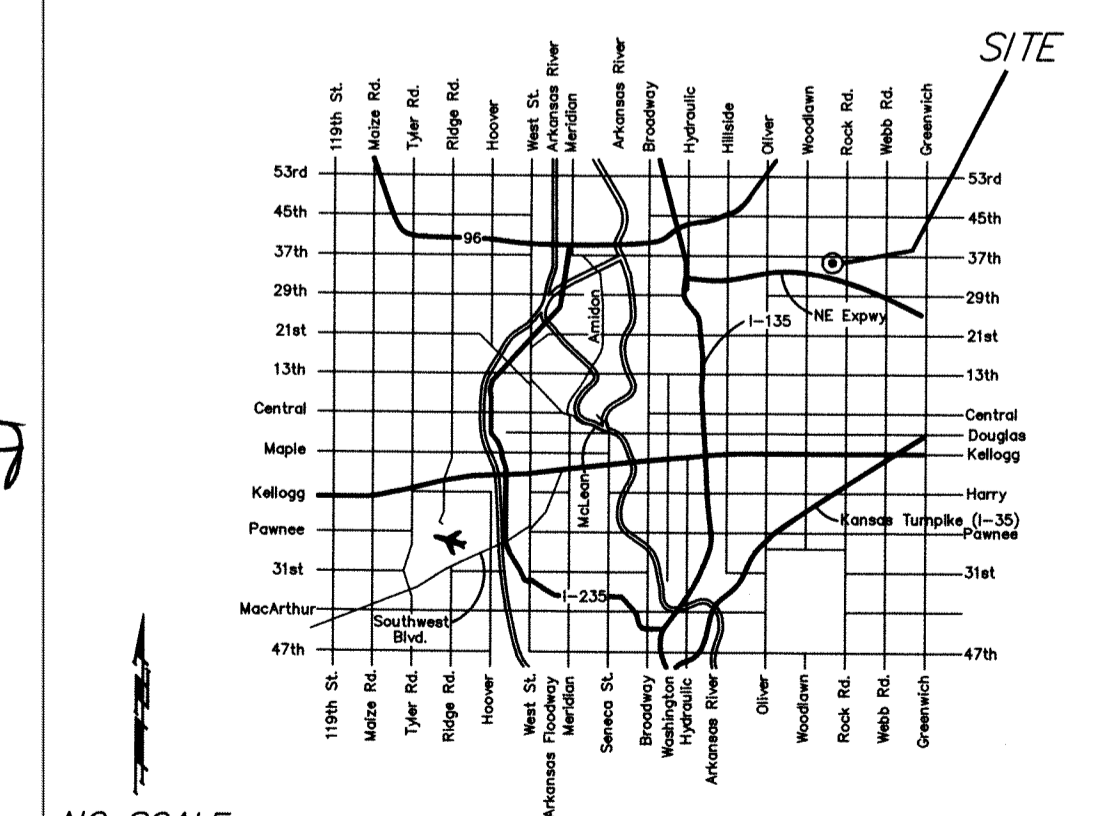
Water Quality requirements will be address with the use of a Hydroworks HG4 Water Quality unit located onsite. The structure has been designed for Water quality requirements for this phase of construction only. The Project Disturbed Area = 2.59 ac. The Water Quality (WQV) = 0.13 ac-ft. Channel Protection (CPV) = NA. Detention = NA.

APPROVED AS NOTED
BY CITY ENGINEER OF WICHITA

Engineering *Jim Janzen* 12-23-13
Stormwater *Jim Handberg* 12-23-13

NOTE TO CONTRACTORS

Installation, inspection and testing for this project is to be provided by a Licensed Consulting Engineering Firm under contract with the Owner/Developer. Said inspection to be in accordance with the City of Wichita standard construction engineering practices and certified by a Licensed Professional Engineer. No work shall be performed in dedicated easements or public right-of-way by the Contractor without such inspection nor shall any work be commenced without written authorization by the City Engineer. All Construction and Materials shall comply with the City of Wichita Specifications and Standards (on file and available in the City Engineer's Office).



BENCHMARK

Benchmark - City of Wichita disc 36th Street North and Inwood, Northwest corner of hubguard on RCBC, south of 37th St.
Elevation = 1371.17 (NAVD 88)

Connect ALL Roof Drains to Water Quality Unit. Refer to 'Utility Plan' and General Contractor for size of pipe entering Unit.

Caution! Proposed Water Crossing

Sta. 3+58.64, End Line 1 = B.L. Sta. 13+41.16, 158.5' Rt. Construct Type 1 Curb Inlet (5'x3') Top Elev. = 1370.20

Sta. 0+00.0, Begin Line 1 = B.L. Sta. 16+05.70, 146.4' Rt. Begin new 15" RCP. Construct standard 15" RCP end section with 28 sq. yds. Light Stone Rip-rap w/ Toe Wall. Use 5'x9" Crushed Stone rip-rap around end section for better seal.

Restrain End Section plus 2 Joints

0+41.00
Sta. 0+41.00, Line 1 = B.L. Sta. 15+97.01, 107.5' Rt. Construct Standard Manhole (4' dia.) Top Elev. = 1370.30

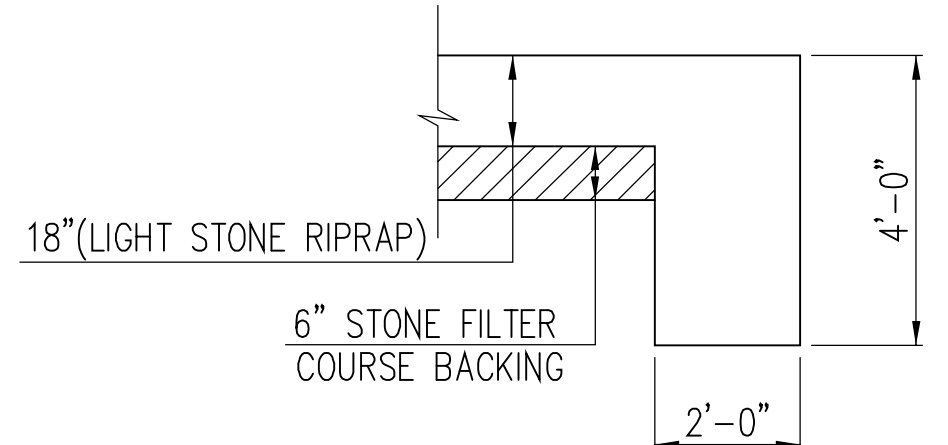
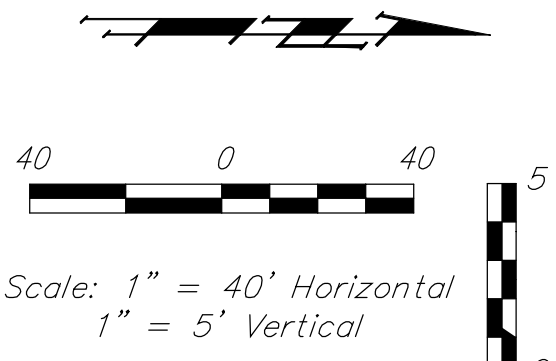
Caution! Proposed Gas Crossing

1+69.00
Sta. 1+69.00, Line 1 = B.L. Sta. 5+03.28, 86.5' Rt. Install Hydroworks HG4 Structure. See Detail, Sheet 4 Top Elev. = 1371.20

Sta. 2+57.68, Line 1 = B.L. Sta. 14+12.39, 86.9' Rt. Construct Type 1 Curb Inlet (5'x3') Top Elev. = 1370.00

Inwood Street

Baseline = @ Inwood Street (Sta. 10+00, intersection of 37th St. North and Inwood)

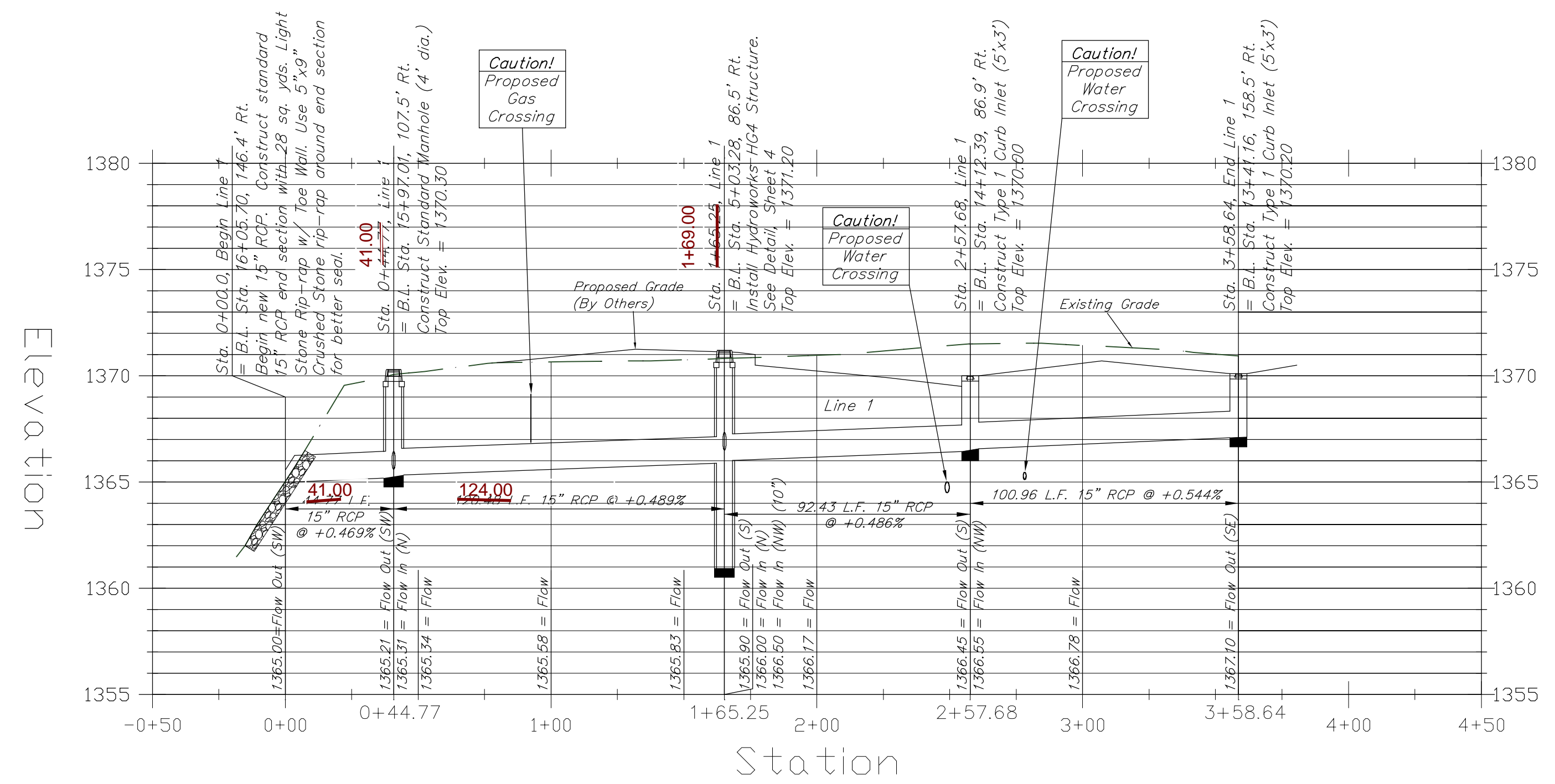


TYPICAL SECTION THRU TOEWALL
NO SCALE

NOTES

1. ALL RIPRAP FOR THIS PROJECT SHALL BE NATURAL STONE. NEITHER BROKEN CONCRETE, FABRIC ENVELOPE, NOR PREMIXED DRY PACKAGED CONCRETE BAG ALTERNATES WILL BE ALLOWED, UNLESS INDICATED OTHERWISE.
2. TOEWALLS SHALL BE INSTALLED ALONG ALL UNPROTECTED EDGES OF STONE RIPRAP.
3. GROUTING OF THE SURFACE OF THE RIPRAP SHALL NOT BE PERFORMED, UNLESS INDICATED OTHERWISE. GROUTING OF THE TOEWALLS SHALL BE PERFORMED PER CITY SPECIFICATIONS.

LIGHT STONE RIPRAP DETAILS



Contractor Shall Follow All Applicable Best Management Practices (BMP) For Erosion Control.

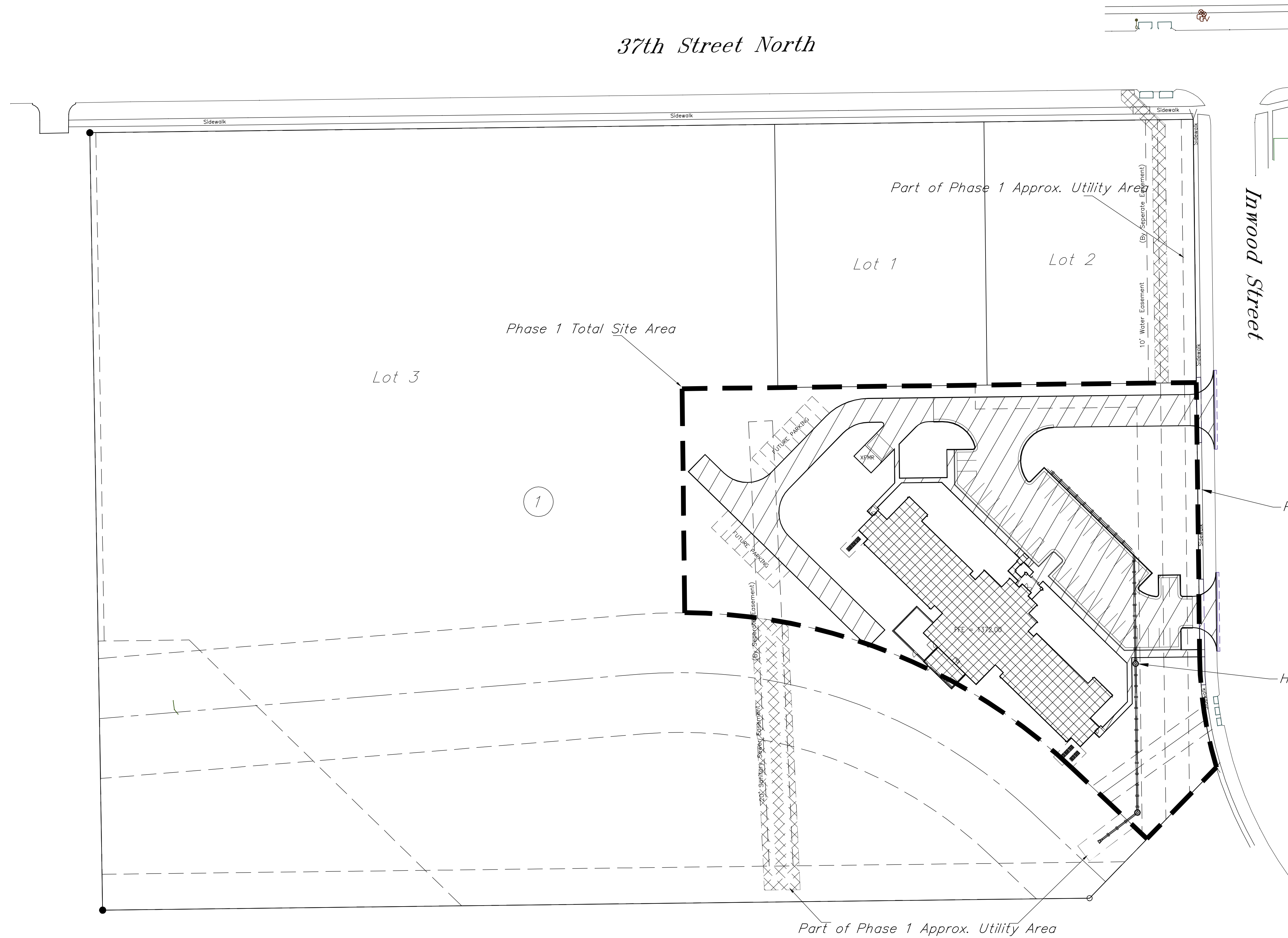
Survey was performed by Third Party.

AS BUILTS
kemiller engineering
516 S. Market, Wichita, KS 67202 (316)264-0242



Baughman		Wichita Children's Home	
		Line 1	
		Storm Water Sewer Improvements	
Baughman Company, P.A. 315 Ellis St. Wichita, KS 67211 P 316-262-7271 F 316-262-0149			
ENGINEERING SURVEYING PLANNING LANDSCAPE ARCHITECTURE			
PROJECT NUMBER 196 PPD (607861)	DESIGN MWS	DRAWN MWS	DATE Aug. 2013
REVISIONS:	APPROVED	SCALE Noted	SHEET
			2 OF 9

37th Street North



Water Quality Unit Maintenance

The Hydroworks HG4 Water Quality Manhole will be inspected and maintained by the developer of the parcel where the unit resides.

Stormwater Compliance

Water Quality requirements will be address with the use of a Hydroworks HG4 Water Quality unit located onsite. The structure has been designed for Water quality requirements for this phase of construction only.

BENCHMARK

Benchmark - City of Wichita disc 36th Street North and Inwood, Northwest corner of hubguard on RCBC, south of 37th St.
Elevation = 1371.17 (NAVD 88)



LEGAL DESCRIPTION

Part of Lot 3, Block 1, Parcel No. 104, an addition to Wichita Sedgwick County, Kansas.

SITE INFORMATION

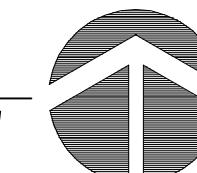
Total Area: ±594,584.2 sq. ft. (13.65 acres)
Phase 1 Approx. Utility Area: ±11,000 sq. ft. (0.25 acres)
(Utility extensions outside of Phase 1 Site Area)
Phase 1 Total Site Area: ±112,783.5 sq. ft. (2.59 acres)
Proposed Impervious Area: ±34,003.7 sq. ft. (0.78 acres)
Proposed Building Area: ±13,891 sq. ft.
Total Impervious Area:
Proposed Impervious + Building: ±47,894.60 sq. ft. (1.10 acres)


ERU LEGEND

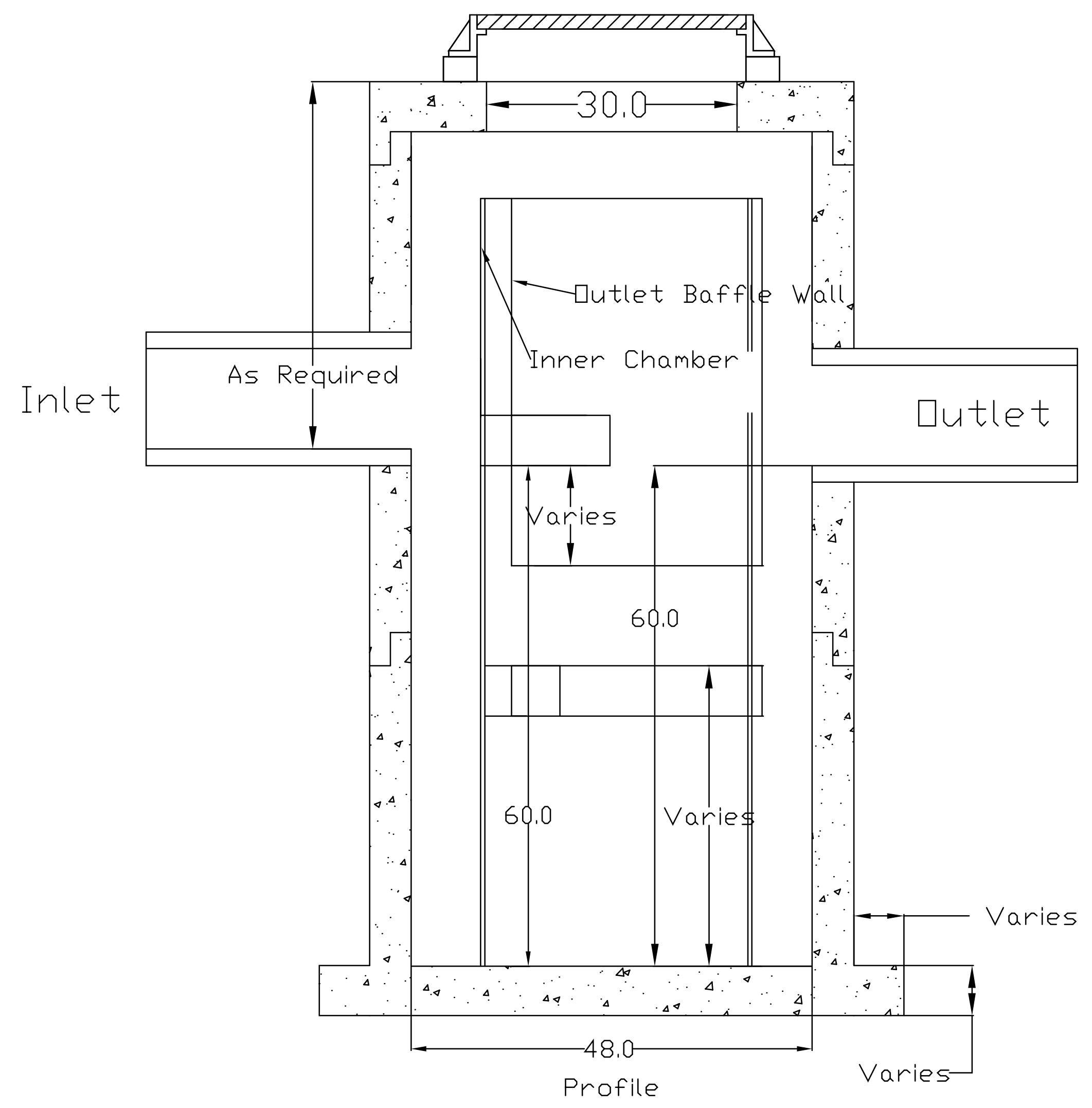
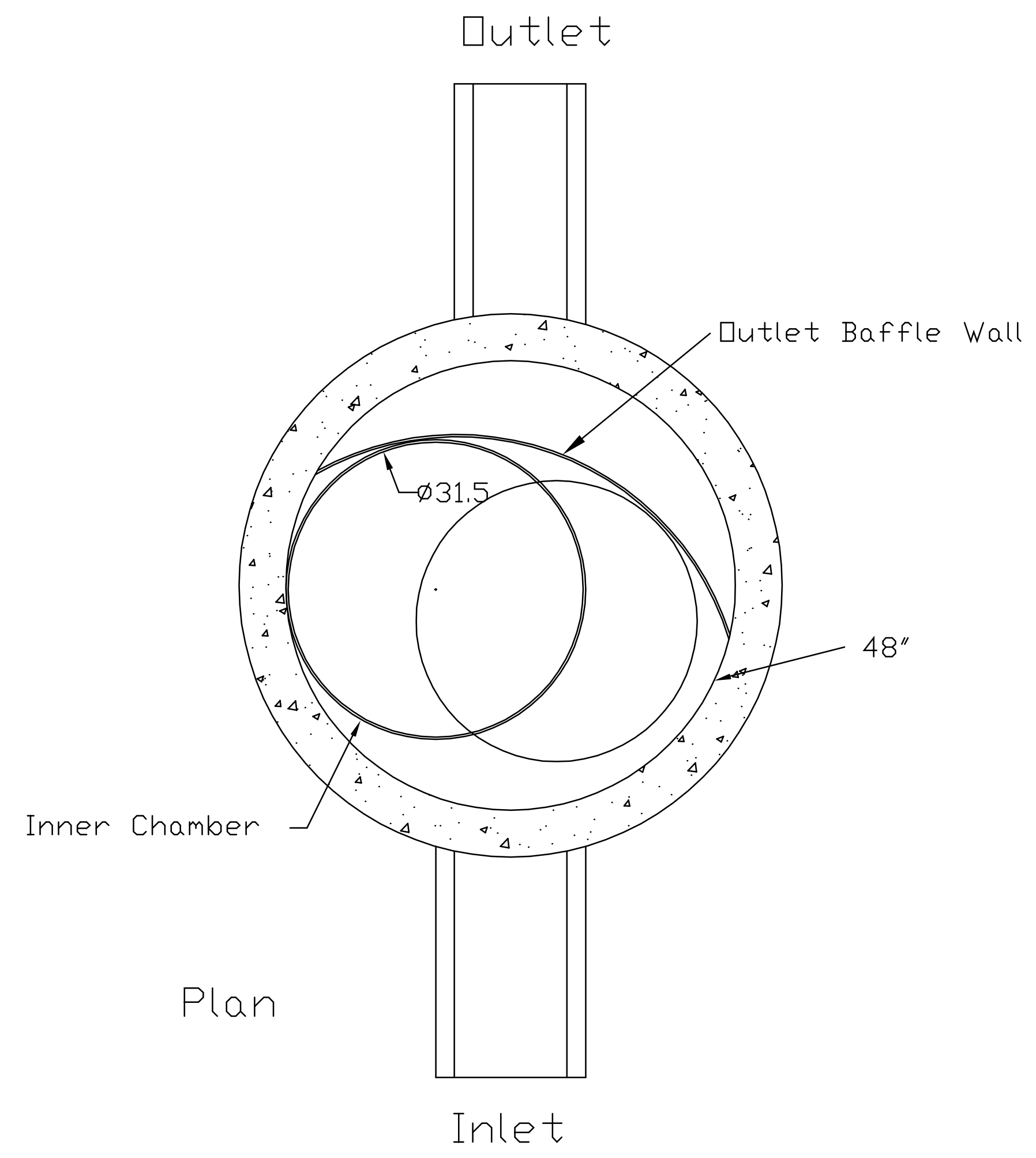
-  = Project Limits
-  = Impervious Area



ERU PLAN
Scale 1"= 50'-0"



		Wichita Children's Home	
		ERU Plan	
		Storm Water Sewer Improvements	
Baughman Company, P.A. 315 Ellis St. Wichita, KS 67211 P 316-262-7271 F 316-262-0149			
ENGINEERING SURVEYING PLANNING LANDSCAPE ARCHITECTURE			
PROJECT NUMBER	DESIGN	DRAWN	
196 PPD (607861)	MWS	MWS	
REVISIONS:	APPROVED	DATE	
		Aug. 2013	
	SCALE	Noted	
	SHEET		
			3 OF 9




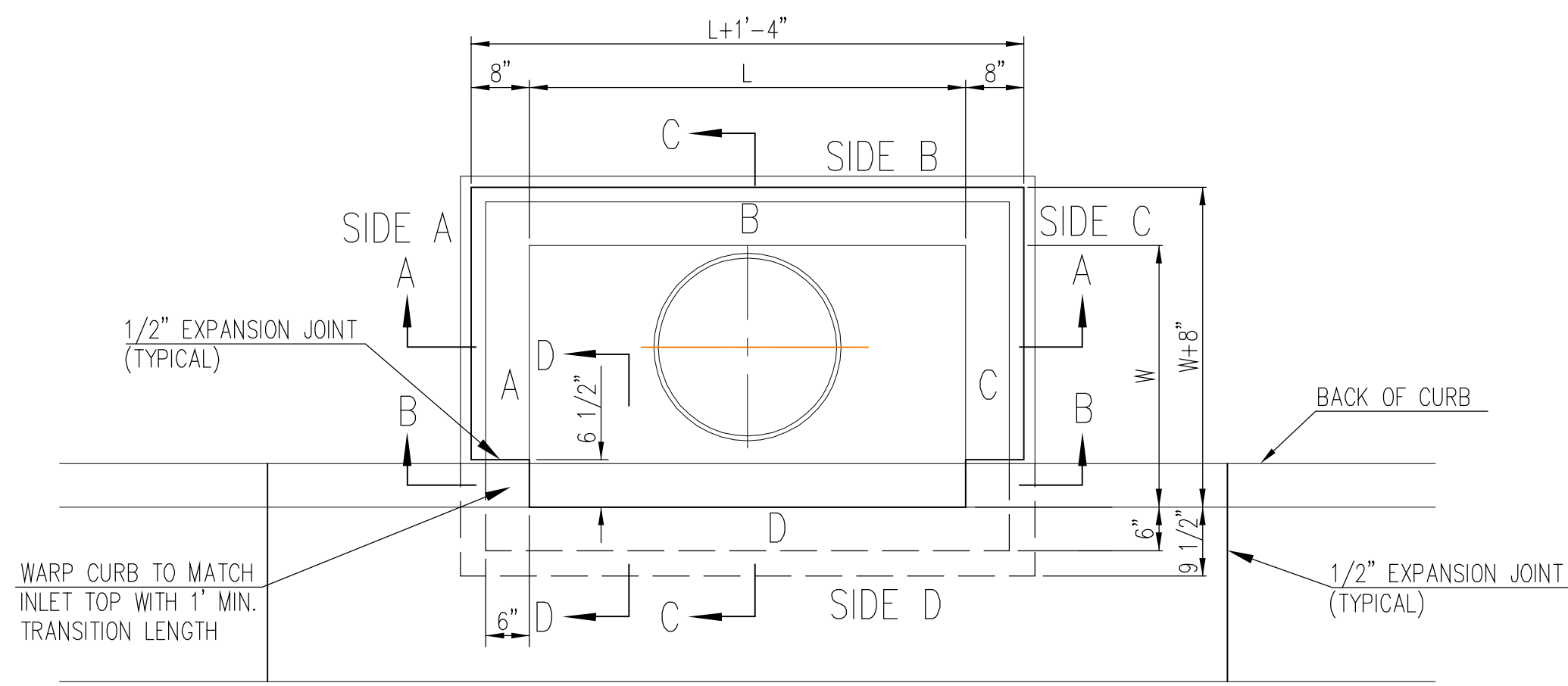
U.S. Patent No. 6,951,619

Dimensions in inches
 Permanent Pool Volume = 450 US gallons
 The Hydroguard must be cleaned after the construction period if it is used as a sediment and erosion control measure
 The Hydroguard should be inspected once per year for stabilized sites
 Inspection will determine the maintenance frequency (annual maintenance or once every two years typical for stabilized sites)
 Sites with unstable conditions (exposed soil or materials storage) will require more frequent inspection and maintenance

Hydroworks, LLC
 50 S 21st St., Kenilworth, NJ 07033
 Phone: 888-290-7900 Fax: 888-783-7271
 Web: www.hydroworks.com

Sheet 4 of 9

Hydroworks HG4 (48"Ø)	
PROJECT:	
LOCATION:	
REVISION DATE: 02/10/2011	



TOP VIEW

BAR SCHEDULE		
INLET OPENING	B1 BARS	SPACING
5'-0"	#4	4"
10'-0"	#6	3.5"

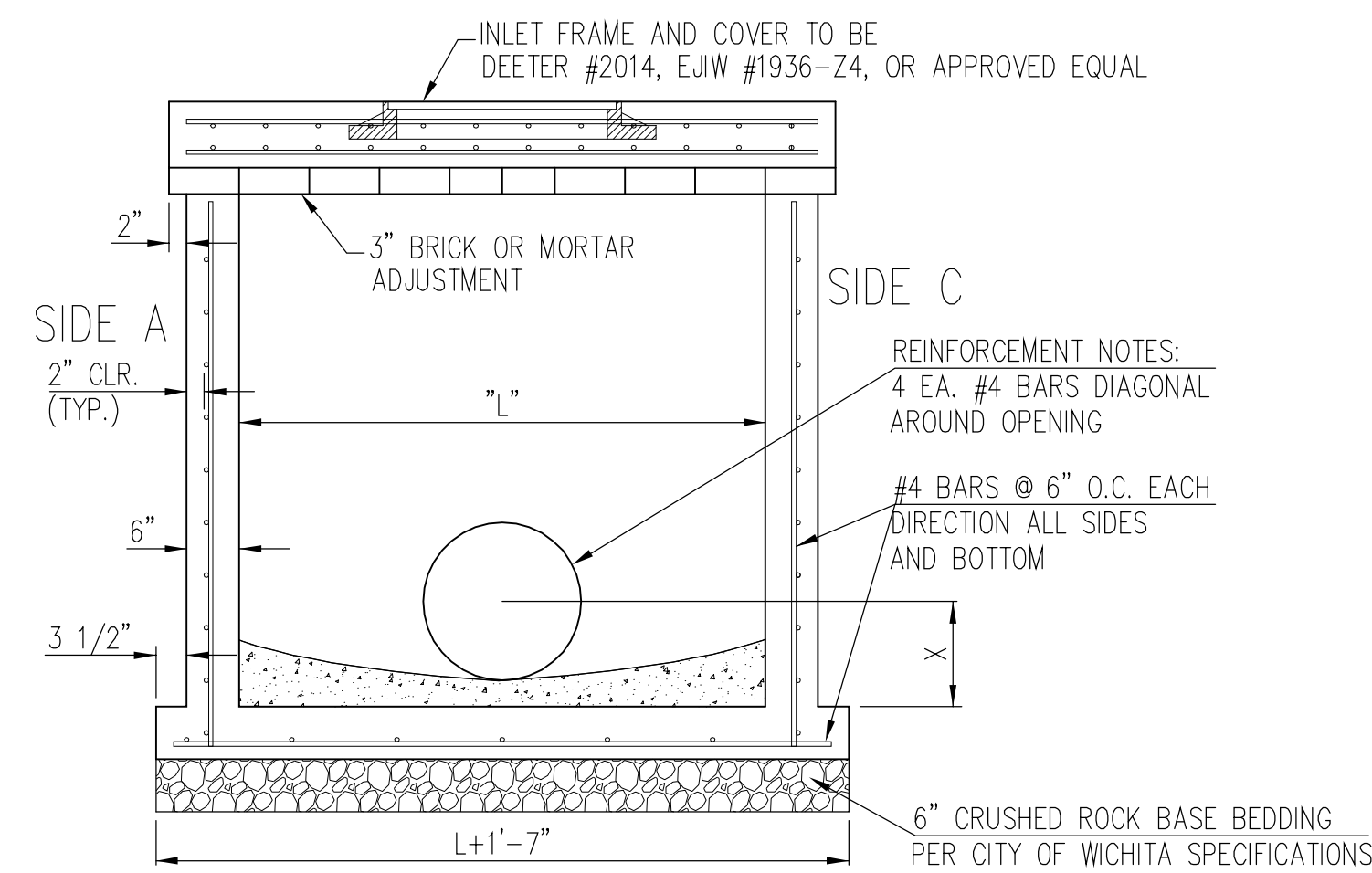
PRECAST CURB INLET WIDTHS				
W	PRE-CAST TOP SIZE		PIPE DIA.**	
	WIDTH	LENGTH		
3'-0"	W+8"	L+1'-4"	7 1/2"	21" & SMALLER
4'-0"	W+8"	L+1'-4"	7 1/2"	24" & 30"
5'-0"	W+8"	L+1'-4"	7 1/2"	36" & 42"
6'-0"	W+8"	L+1'-4"	7 1/2"	48" & 54"
7'-0"	W+8"	L+1'-4"	7 1/2"	60" & 66"

** FOR PIPES PERPENDICULAR TO INLET WALL

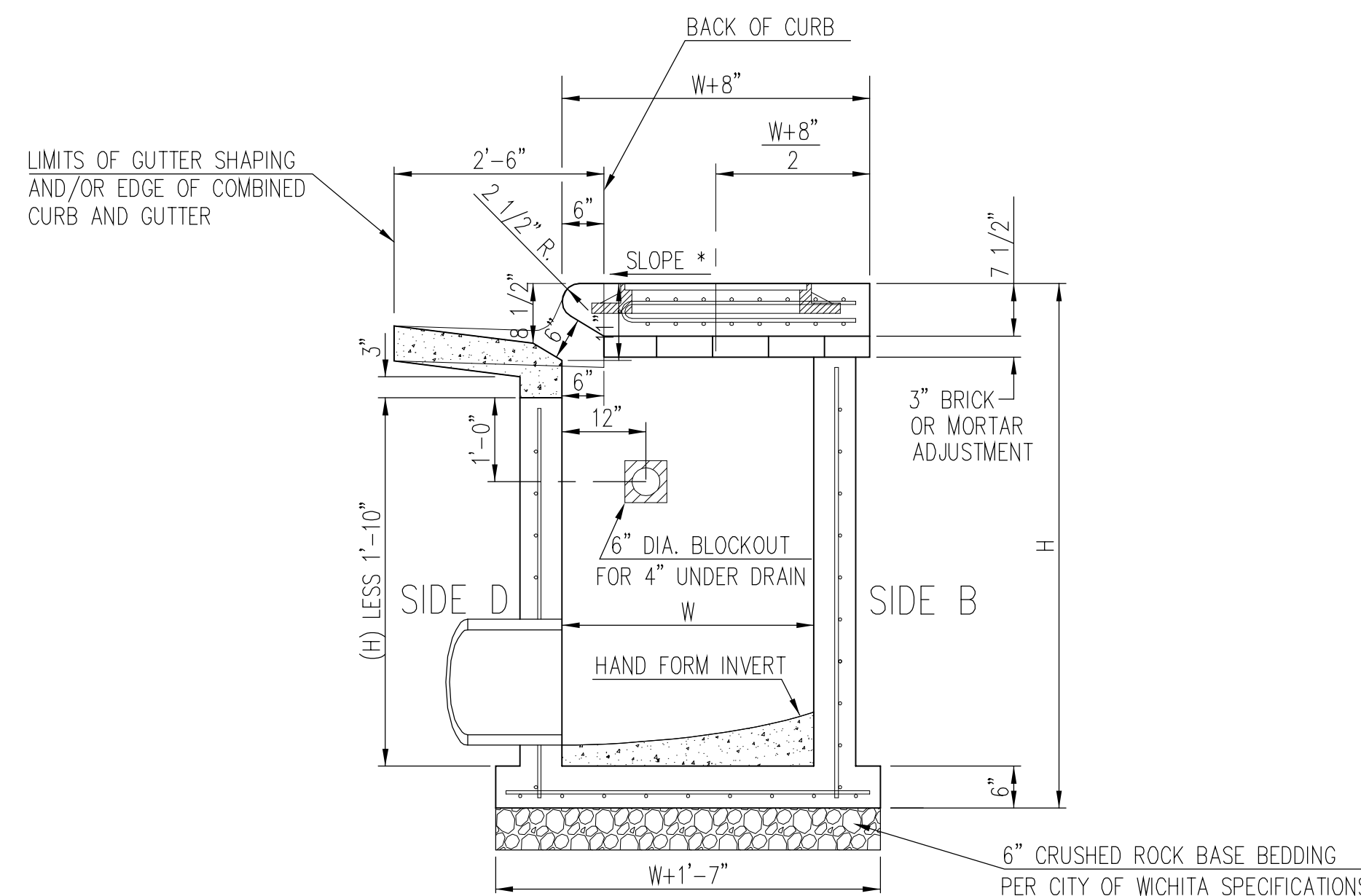
GENERAL NOTES

1. CONCRETE TOPS TO BE INSTALLED ON THIN MORTAR CUSHION TO INSURE FULL SUPPORT ALONG BRICK. CONCRETE TOPS MAY BE CAST IN PLACE OR PRECAST. CONCRETE USED FOR INLET CONSTRUCTION SHALL CONFORM TO CITY OF WICHITA SPECIFICATIONS FOR CONCRETE PAVEMENT MIX.
2. CONTRACTOR SHALL HAVE THE OPTION OF CONSTRUCTING 8" BRICK MASONRY WALLS BETWEEN THE CONCRETE INLET BASE AND TOP OF THIS INLET WHEN W=5'-0" AND H=7'-0" OR LESS.
3. INLET INVERT SHALL BE SHAPED WITH 8 SACK SAND MIX CONCRETE TO CREATE FLOW CHANNELS AND TO INCREASE HYDRAULIC EFFICIENCY SUCH THAT THE INLET WILL BE SELF CLEANING BETWEEN ALL INLET AND/OR OUTLET PIPES.
4. THE ENDS OF ALL PIPES INSTALLED IN INLETS SHALL BE CUT OFF FLUSH WITH THE INSIDE FACE OF THE INLET WALL.
5. INLET FRAME AND COVER TO BE DEETER #2014, EJIW #1936 Z4, OR APPROVED EQUAL.
6. CONTRACTOR SHALL REMOVE LIFTING HOOKS AFTER INSTALLATION. RECESSES IN INLET WALL SHALL BE GROUTED FLUSH TO THE INLET WALL WITH HYDRAULIC CEMENT AFTER THE INLET IS IN PLACE. LIFTING HOLES THRU THE INLET WALL WILL NOT BE ACCEPTED.

WARP CURB TO MATCH INLET TOP WITH 1" MIN. TRANSITION LENGTH

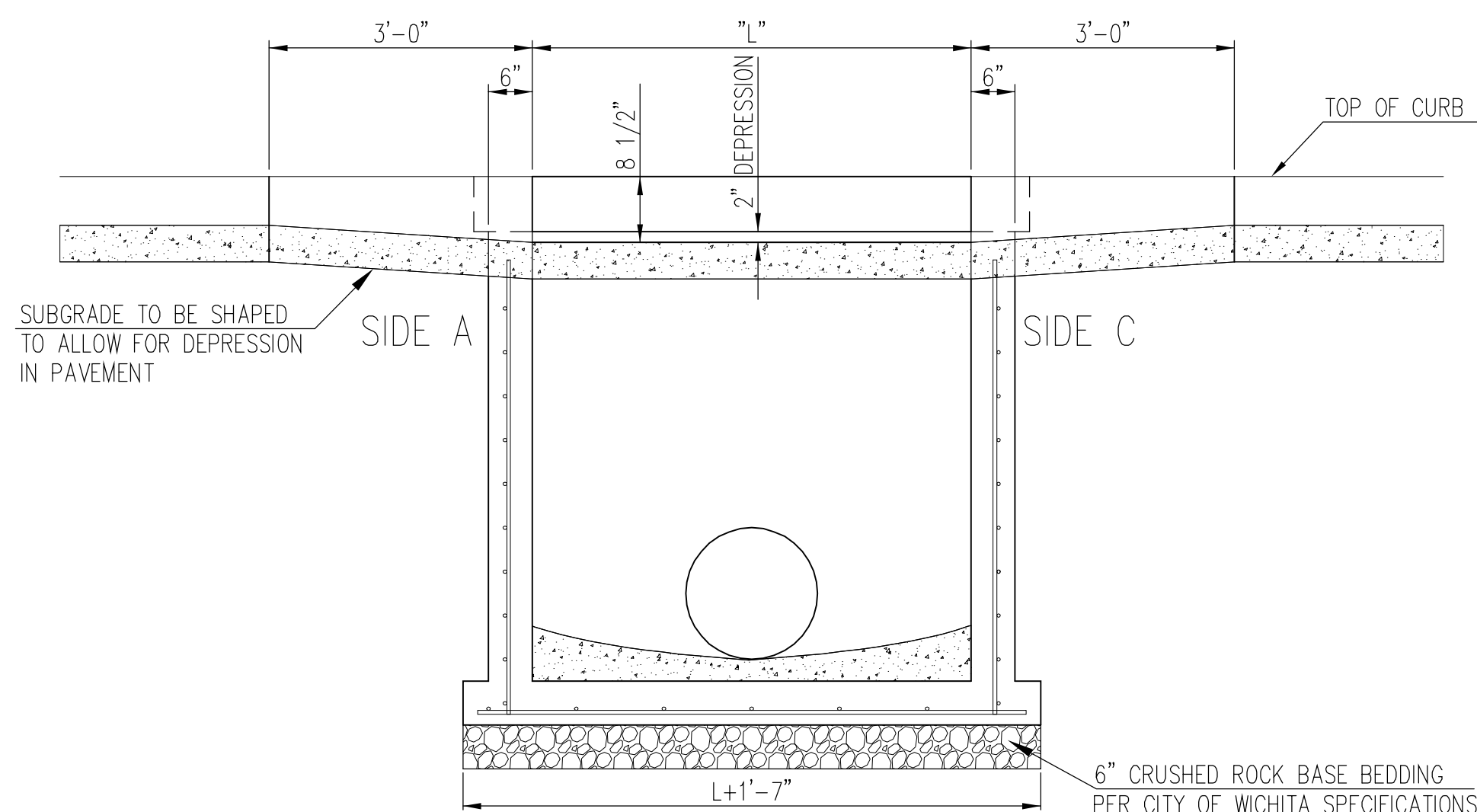
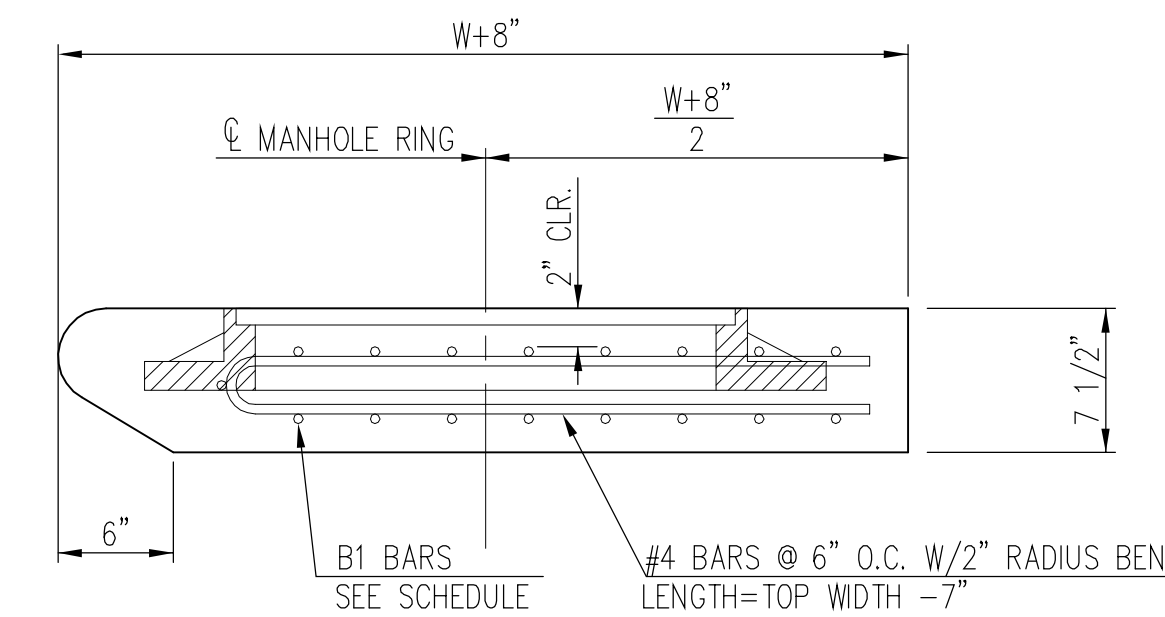


SECTION "A-A"

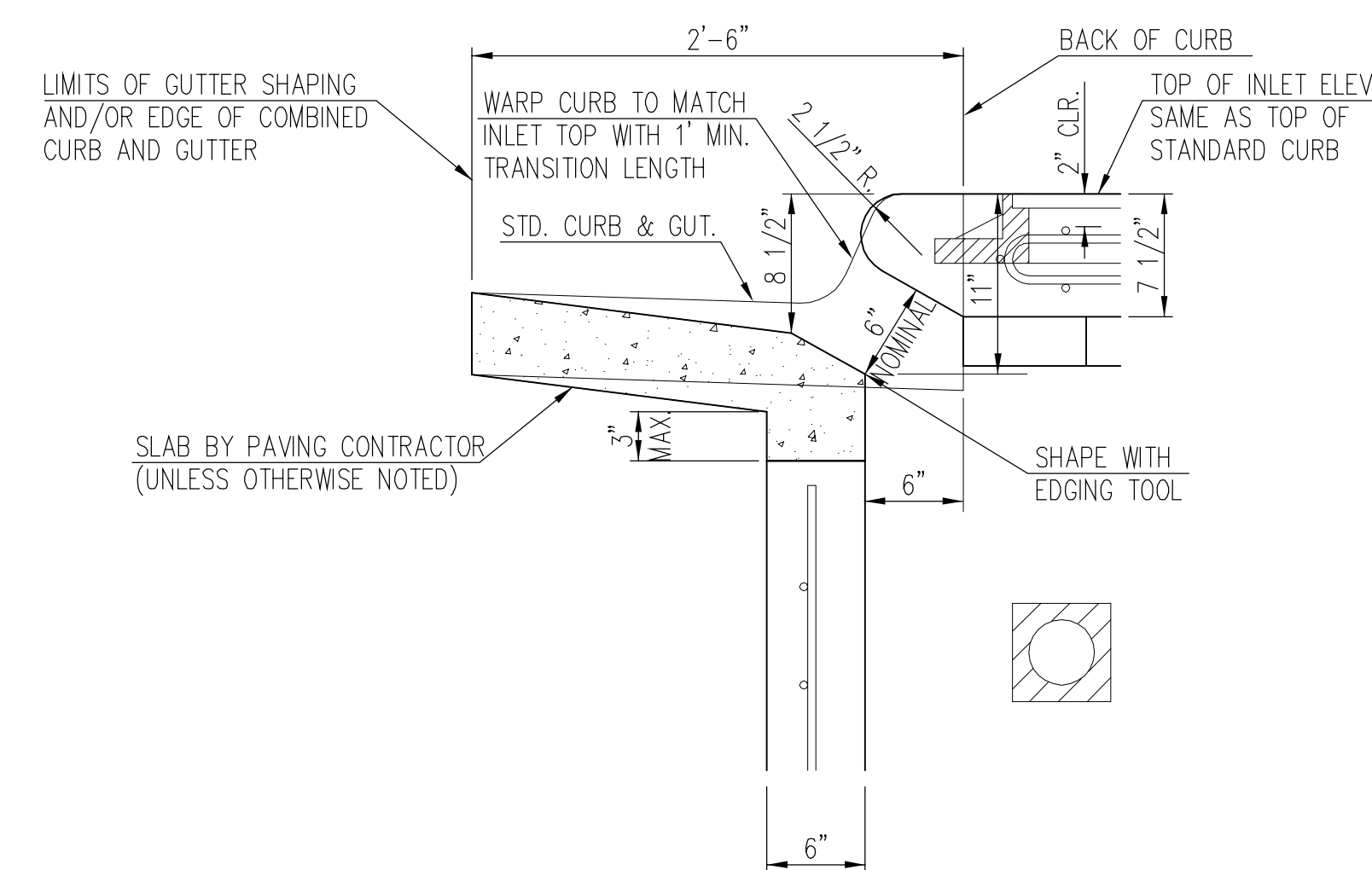


SECTION "C-C"

NOTES:
* SLOPE OF INLET TOP TO MATCH SIDEWALK OR PARKING SLOPES WITHIN LIMITS INDICATED.



SECTION "B-B"



SECTION "D-D"



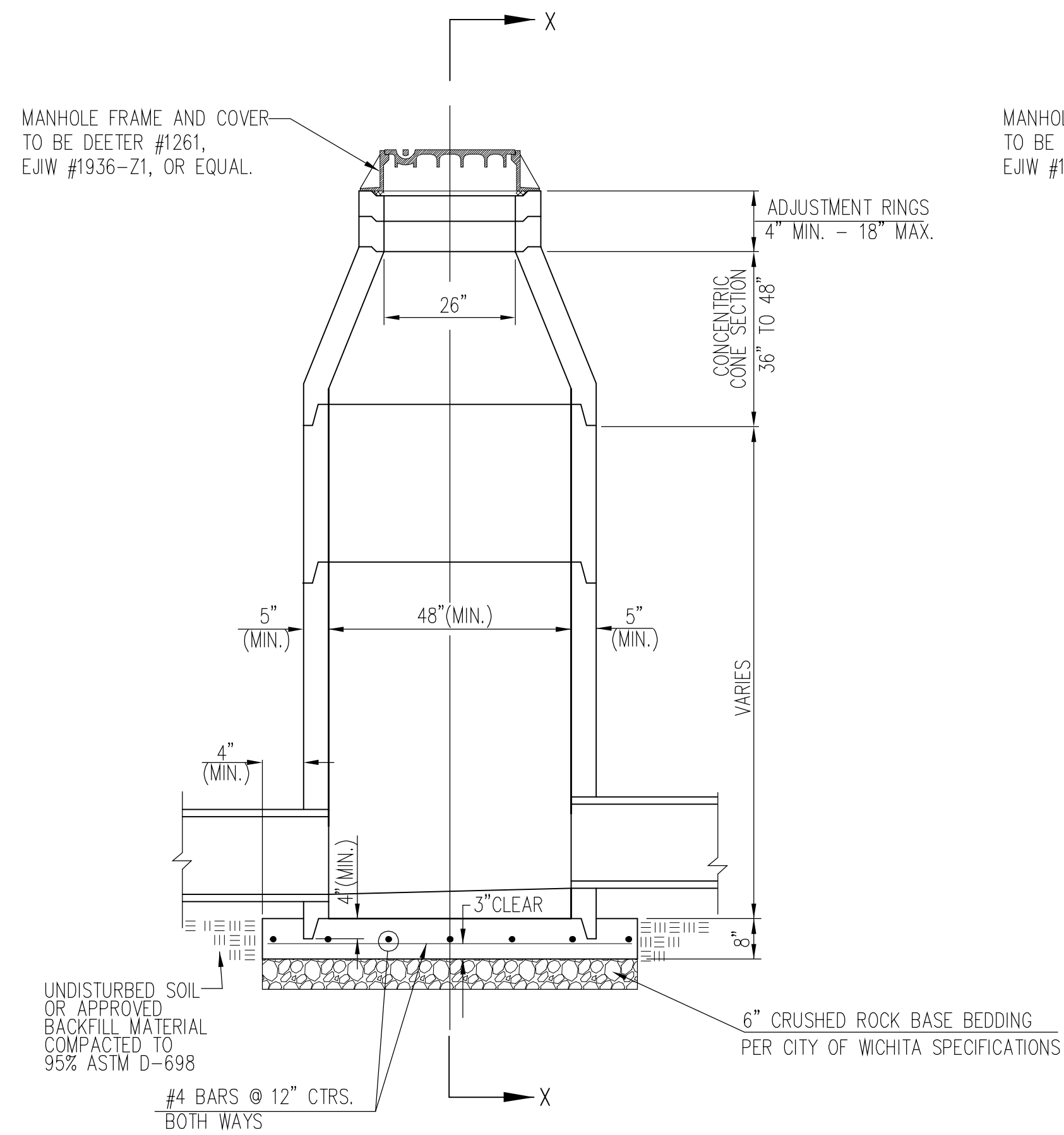
STANDARD TYPE 1 CURB INLET
5'-0" OR 10'-0" OPENING

CITY ENGINEER
Gary Janzen, P.E. City Engineer

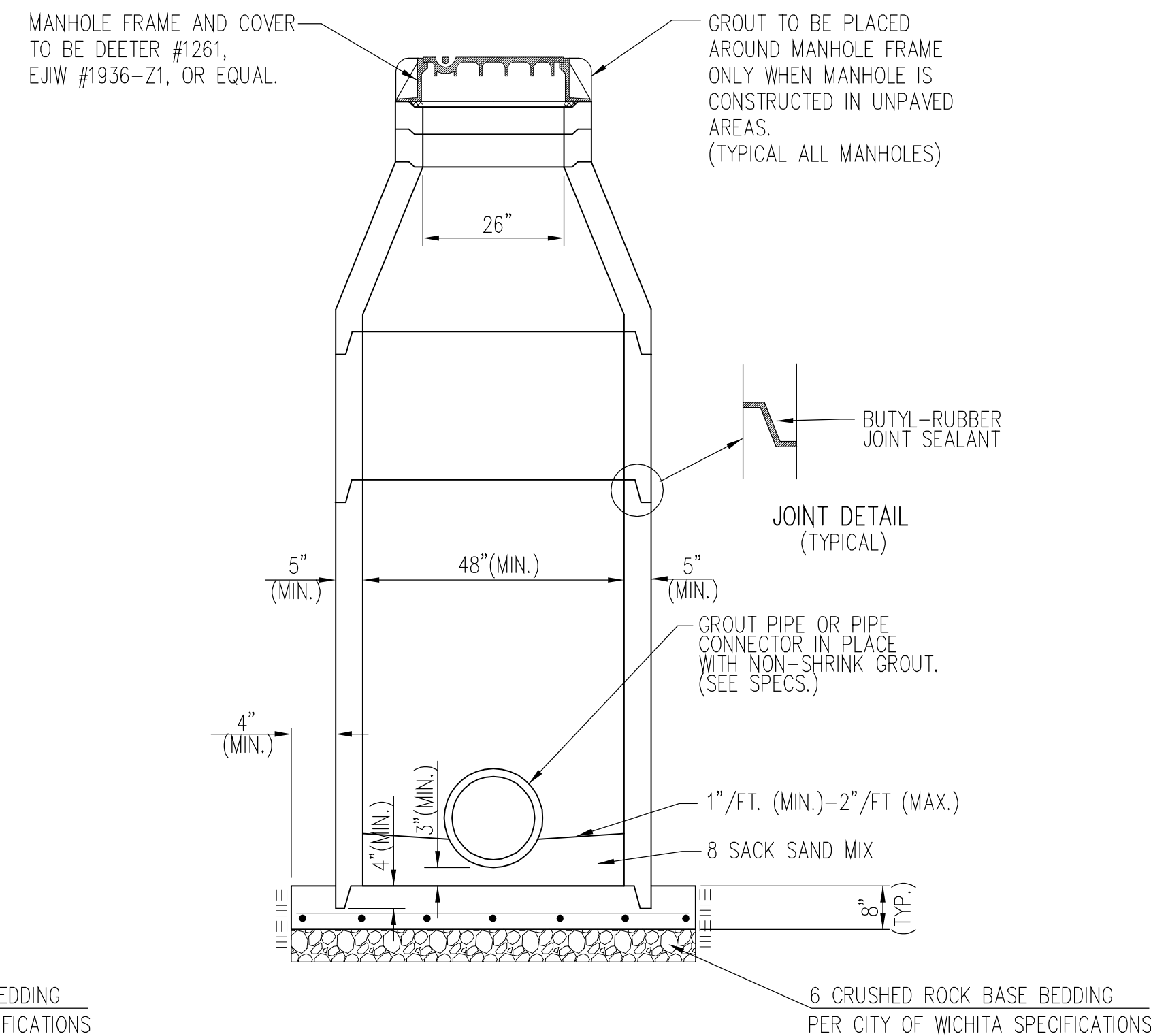
PROJECT NUMBER 196 PPD	OCA NUMBER 607861	DATE 4/2012
---------------------------	----------------------	----------------

CITY ENGINEER'S OFFICE
CITY HALL - SEVENTH FLOOR
455 NORTH MAIN STREET
WICHITA, KANSAS 67202-1620
(316) 268-4501

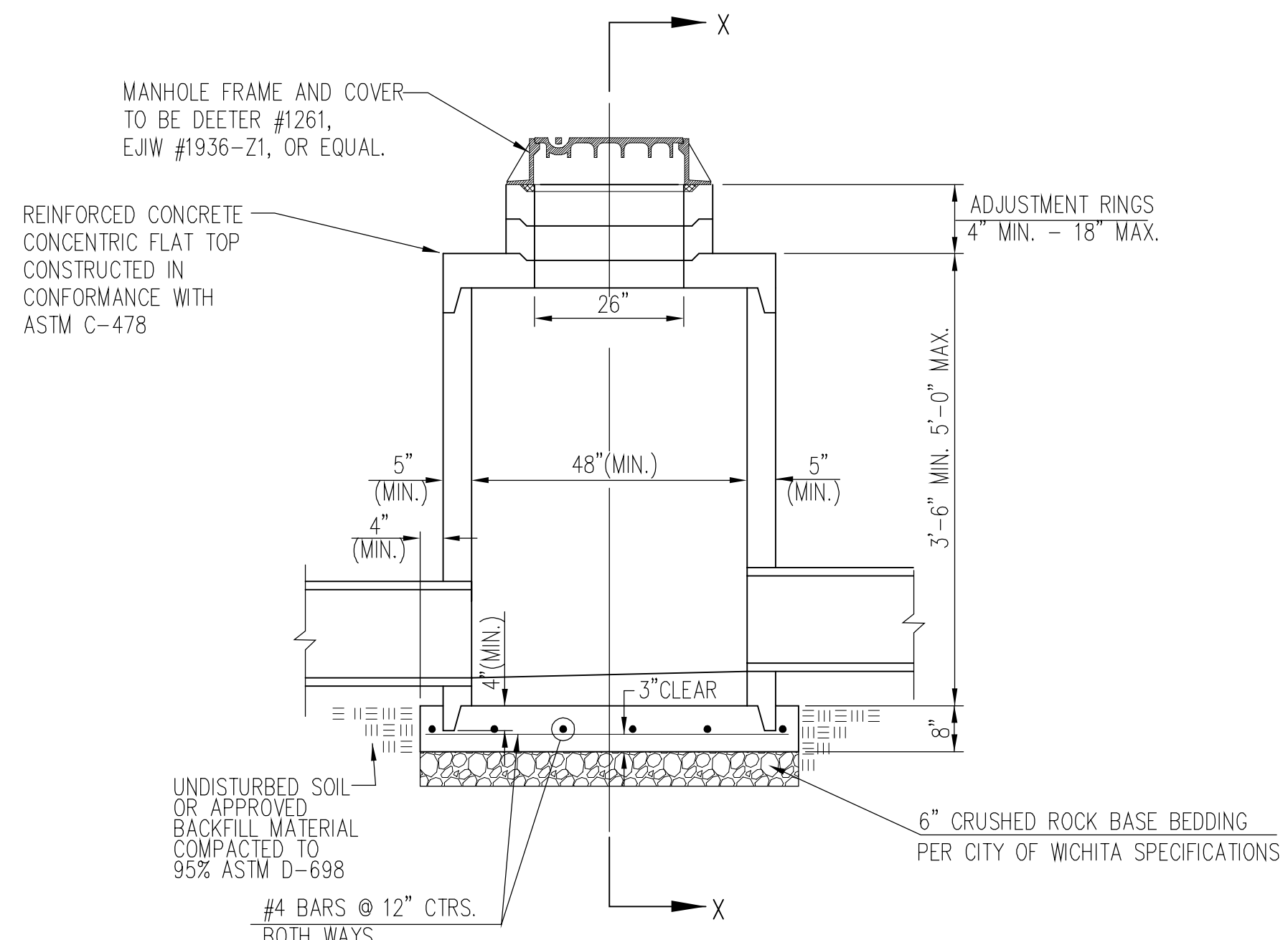
DESIGN Staff	DRAWN Staff
SHEET 5 of 9	



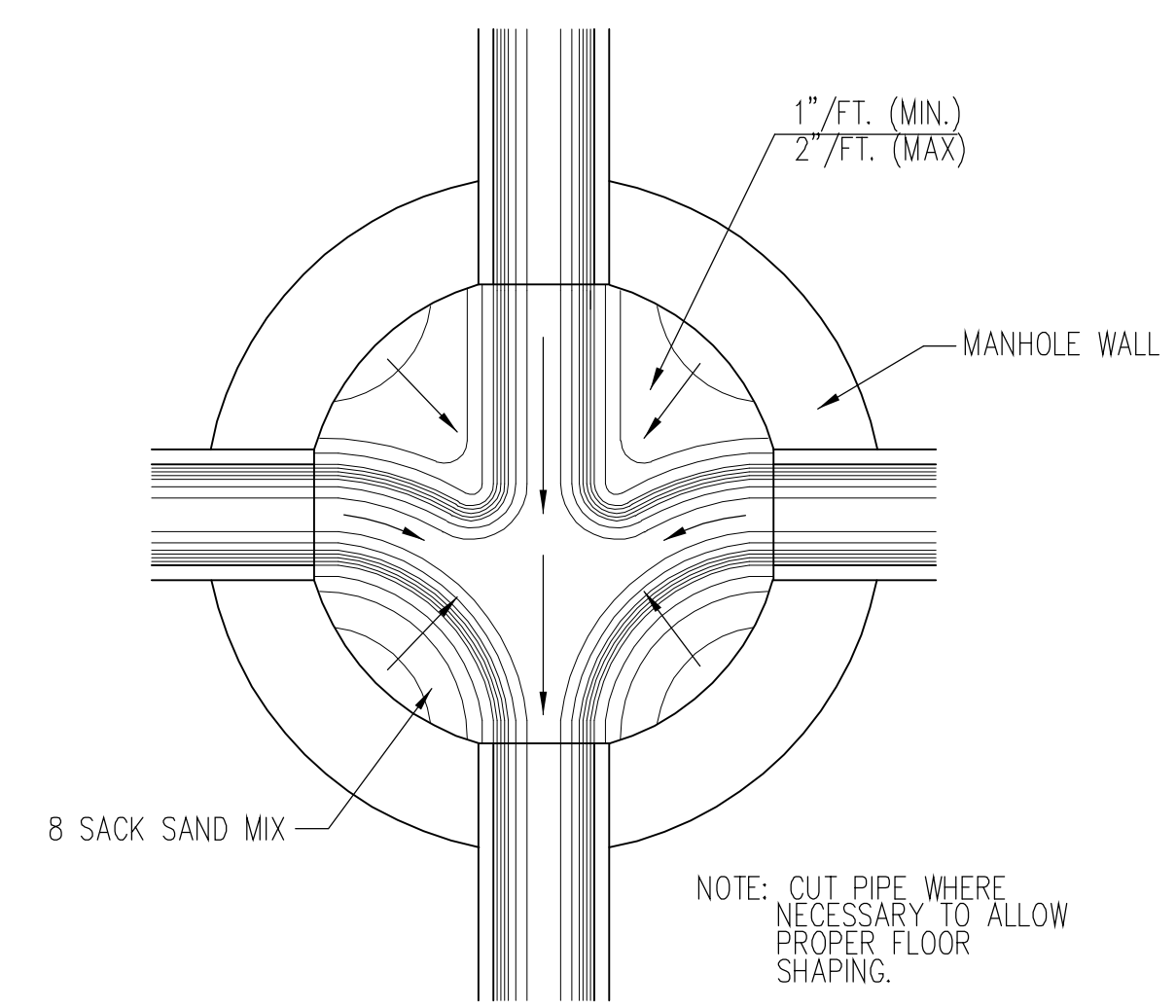
PRECAST STANDARD MANHOLE TYPE "A"



SECTION X-X (TYPICAL)



PRECAST SHALLOW MANHOLE TYPE "B"



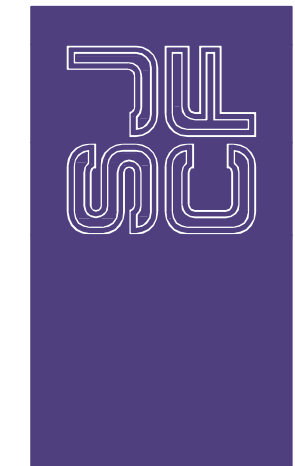
TYPICAL MANHOLE FLOOR SHAPING

GENERAL NOTES

- IF, IN THE OPINION OF THE ENGINEER, THE MANHOLE SUBGRADE APPEARS UNSTABLE, THE CONTRACTOR WILL HAVE THE OPTION TO COMPACT SUBGRADE AS SHOWN OR INCREASE THE THICKNESS OF THE MANHOLE BASE AS DIRECTED BY THE ENGINEER.
- STEEL REINFORCING WILL BE REQUIRED IN ALL MANHOLE BASES.
- ALL MANHOLE CONSTRUCTION SHALL BE WATER TIGHT.
- TOP OF MANHOLE FLOOR SLAB SHALL BE AT LEAST 3 INCHES BELOW THE FLOW LINE OF THE OUTLET PIPE TO INSURE SUFFICIENT MINIMUM THICKNESS OF SHAPED INVERT.
- ALL PRECAST CONCRETE MANHOLE SECTIONS SHALL CONFORM TO THE LATEST REVISION OF ASTM C-478 AS MODIFIED BY THE SPECIFICATIONS.
- CONCRETE USED FOR MANHOLE CONSTRUCTION SHALL CONFORM TO CITY OF WICHITA SPECIFICATIONS FOR CONCRETE PAVEMENT MIX.
- PRECAST MANHOLES SHALL BE SET AT LEAST 4 INCHES INTO MANHOLE BASE.
- MANHOLES WITH PIPE SIZES 24" AND LARGER SHALL HAVE 5 FOOT INSIDE DIAMETER (MIN.)
- MANHOLES WITH PRECAST BASES MAY BE USED AT THE CONTRACTORS OPTION. THESE MANHOLES SHALL HAVE AN 8" MINIMUM BASE THICKNESS AND SHALL BE PLACED ON AN 8" MIN. CRUSHED ROCK BASE. PIPES SHALL BE ENCASED WITH CRUSHED ROCK TO AT LEAST 3 FEET FROM THE MANHOLE WALL.
- CONTRACTOR SHALL REMOVE LIFTING HOOKS AFTER INSTALLATION. RECESSES IN MANHOLE WALL SHALL BE GROUTED FLUSH TO THE MANHOLE WALL WITH HYDRAULIC CEMENT AFTER THE MANHOLE IS IN PLACE. LIFTING HOLES THRU THE MANHOLE WALL WILL NOT BE ACCEPTED.
- THE ENDS OF ALL PIPES IN MANHOLES SHALL BE CUT OFF FLUSH WITH THE INSIDE FACE OF THE MANHOLE WALL.
- MANHOLE INVERT SHALL BE SHAPED WITH 8 SACK SAND MIX CONCRETE TO CREATE FLOW CHANNELS AND TO INCREASE HYDRAULIC EFFICIENCY SUCH THAT THE MANHOLE WILL BE SELF CLEANING BETWEEN ALL INLET AND/OR OUTLET PIPES.
- MANHOLE FRAME AND COVER TO BE DEETER #1261, EJIW #1936-Z1, OR APPROVED EQUAL, SEE SW-303.
- FOR FLAT GRATED INLET APPLICATION, GRATE TO BE DEETER #1933, EJIW #1205 MDI, OR APPROVED EQUAL.
- FOR BEEHIVE GRATE APPLICATION, GRATE TO BE DEETER #4495, EJIW #120545, OR APPROVED EQUAL.

CITY OF WICHITA
PUBLIC WORKS & UTILITIES
ENGINEERING DIVISION

PRECAST CONCRETE MANHOLE (STORM SEWER)		
CITY ENGINEER Gary Janzen, P.E. City Engineer		
PROJECT NUMBER 196 PPD	OCA NUMBER 607861	DATE 4/2012
CITY ENGINEER'S OFFICE CITY HALL - SEVENTH FLOOR 455 NORTH MAIN STREET WICHITA, KANSAS 67202-1620 (316) 268-4501		DESIGN Staff
		DRAWN Staff
		SHEET 6 of 9



Baughman
 ENGINEERING | SURVEYING | PLANNING
 LANDSCAPE ARCHITECTURE

SCHAEFER JOHNSON COX FREY ARCHITECTURE
 Empire Center
 1000 E. 10th St.
 Wichita, Kansas
 67202-2817
 Fax: 316.262.0149
 www.sjf.com



Baughman
 ENGINEERING | SURVEYING | PLANNING
 LANDSCAPE ARCHITECTURE

**WICHITA CHILDREN'S HOME
 BRIDGES APARTMENTS**
 37TH AND INWOOD

Revisions
 1
 2
 3
 4
 5

Project Number
SJCF 5149.10

Date
06 SEPT 2013

GRADING

1" = 30'-0"

C23.1

**Wichita Children's Home
 Reference Plan
 for PPD
 Storm Water Sewer Improvements**

Baughman Company, P.A. 315 Ellis St. Wichita, KS 67211 P 316.262.0149 F 316.262.0149
 ENGINEERING | SURVEYING | PLANNING | LANDSCAPE ARCHITECTURE

PROJECT NUMBER
196 PPD (607861)

DESIGN
 MWS

DRAWN
 MWS

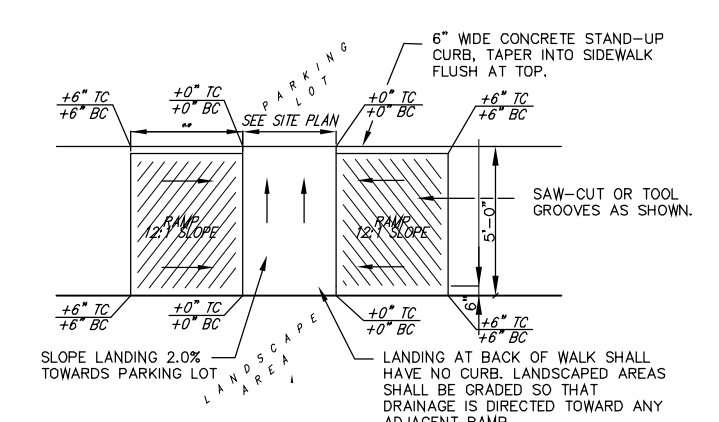
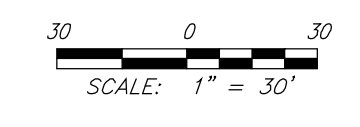
APPROVED DATE
 Noted Aug. 2013

SCALE
 Noted

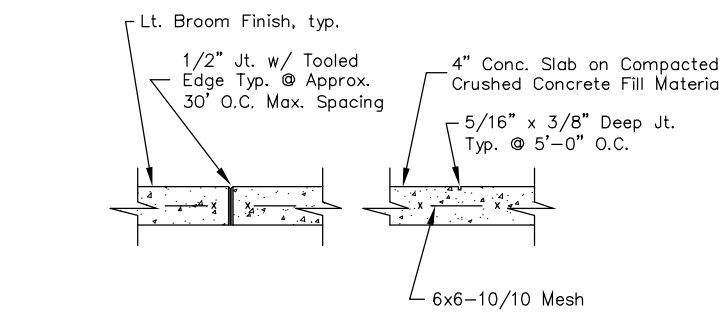
SHEET
7 OF 9

GRADING NOTES

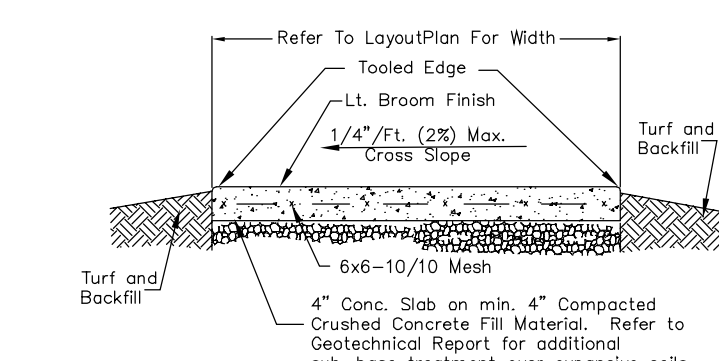
- Contractor shall be required to provide notice to Kansas One Call at 687-2470 a minimum of two (2) working days prior to any excavation or work adjacent to utilities.
- The Contractor must notify the following in case of an emergency:
 Kansas Gas Service (Gas).....1-888-482-4950
 Aquila Energy (Gas).....1-800-303-0357
 Westar Energy (Electric).....383-8650
 Cox Communications (Cablevision).....282-4270
 AT&T (Phone).....288-2759
 City of Wichita Water Dept. (Water).....288-4563 or 288-4908
 City of Wichita Sewer Maint.(San. Sewer).....288-4024
 City of Wichita Storm Sewer Maint. (Storm Sewer).....288-4000
 City of Wich Traffic Maint.(Trsf. Control).....288-4034 or 288-4203
- Existing utilities and their locations, as shown on the plans, represent the best information obtainable for design. Location information has been obtained from the various utility companies and is either from company record drawings or company provided field locations. The Contractor will be required to work around existing utilities which do not conflict with proposed construction.
- Traffic affected by the construction on this project shall be handled in accordance with the latest edition of the Local Manual on Uniform Traffic Control Devices.
- The Contractor shall verify all utility locations prior to construction of this project.
- Refer to Landscape Plans and Specifications for Treatment of All Disturbed Areas.
- Signaling and striping shall be installed Per Approved Specifications.
- Paved Lot to be constructed Per Approved Specifications.
- The Contractor shall notify adjacent landowners prior to proceeding with any construction work on landowner's property.
- Slopes on sidewalks around building shall not exceed 1/4" per foot (or 2%). Notify Engineer of any discrepancies prior to forming of walks.



8 HANDICAP RAMP
 NOT TO SCALE



7 SIDEWALK JOINTS
 NOT TO SCALE



6 TYP. CONC. WALK SECTION
 NOT TO SCALE (Walk Around Ext. Bldg.)

Regrade All disturbed areas to Match existing and New Construction. Reseed All Disturbed Areas per Landscape Plan.

Refer to 'Layout Plan', prepared by others, for dimensions.

BENCHMARK

Benchmark - City of Wichita disc 36th Street North and Inwood, Northwest corner of hubguard on RCBC, south of 37th St.
 Elevation = 1371.17 (NAVD 88)

LEGAL DESCRIPTION

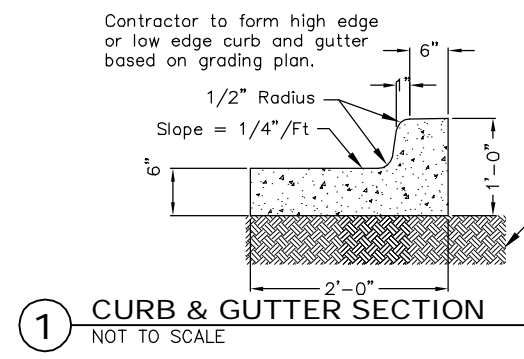
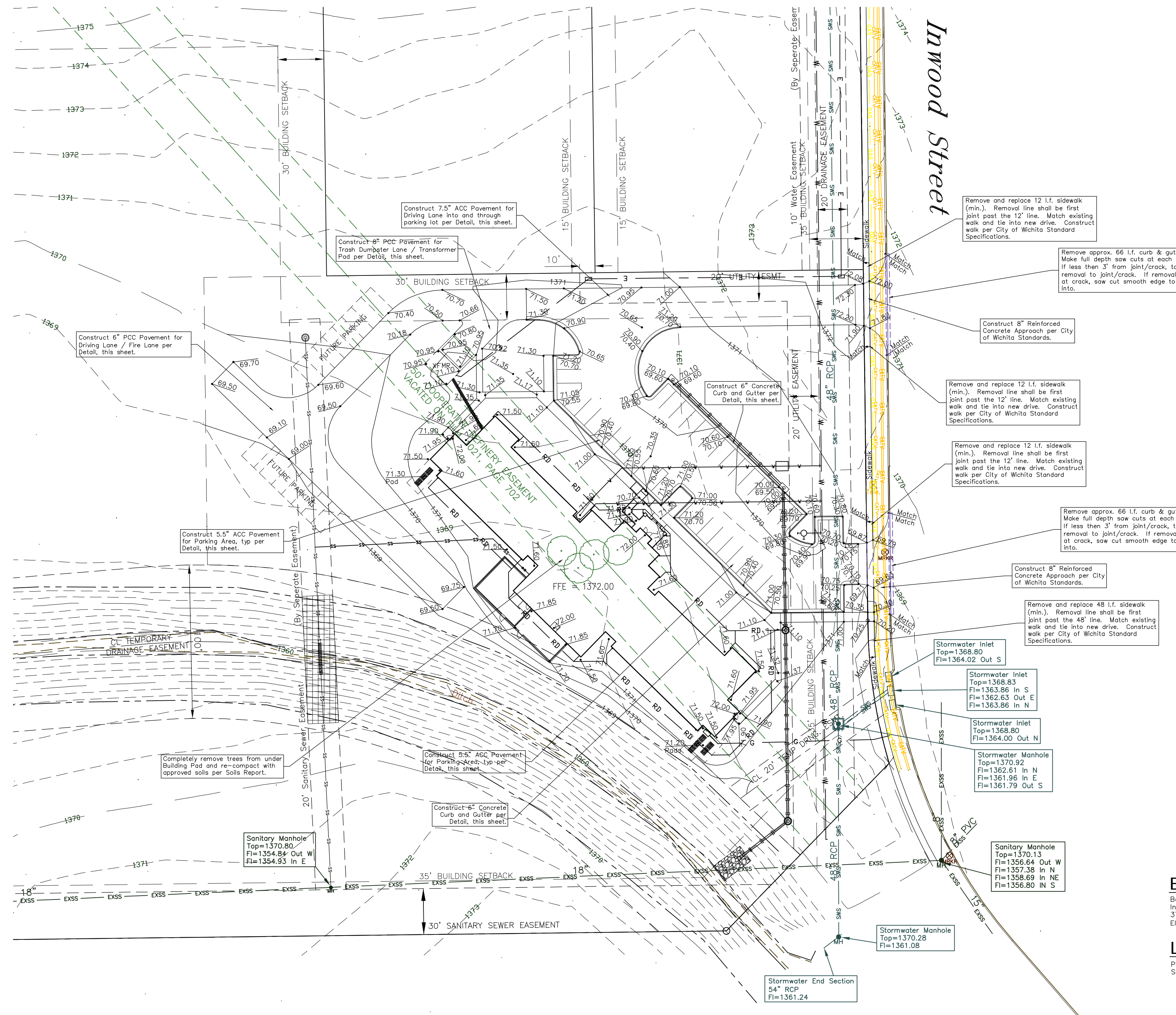
Part of Lot 3, Block 1, Parcel No. 104, an addition to Wichita Sedgwick County, Kansas.



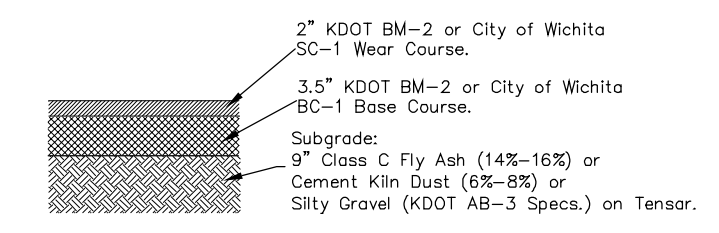
Baughman Company, P.A.
 315 Ellis St. Wichita, KS 67211
 P 316.262.0149 F 316.262.0149

SITE GRADING PLAN

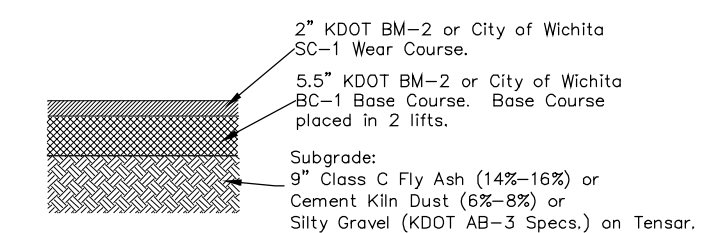
Scale 1" = 30'-0"



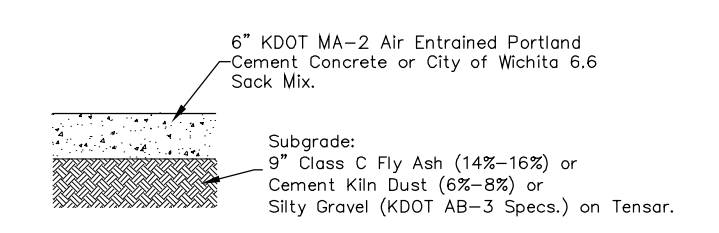
1 CURB & GUTTER SECTION
 NOT TO SCALE



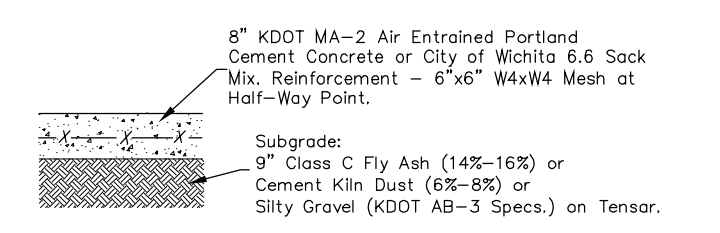
2 5.5" ASPHALT CEMENT PAVEMENT
 NOT TO SCALE (Always refer to Geotechnical Report prior to Construction)



3 7.5" ASPHALT CEMENT PAVEMENT
 NOT TO SCALE (Always refer to Geotechnical Report prior to Construction)

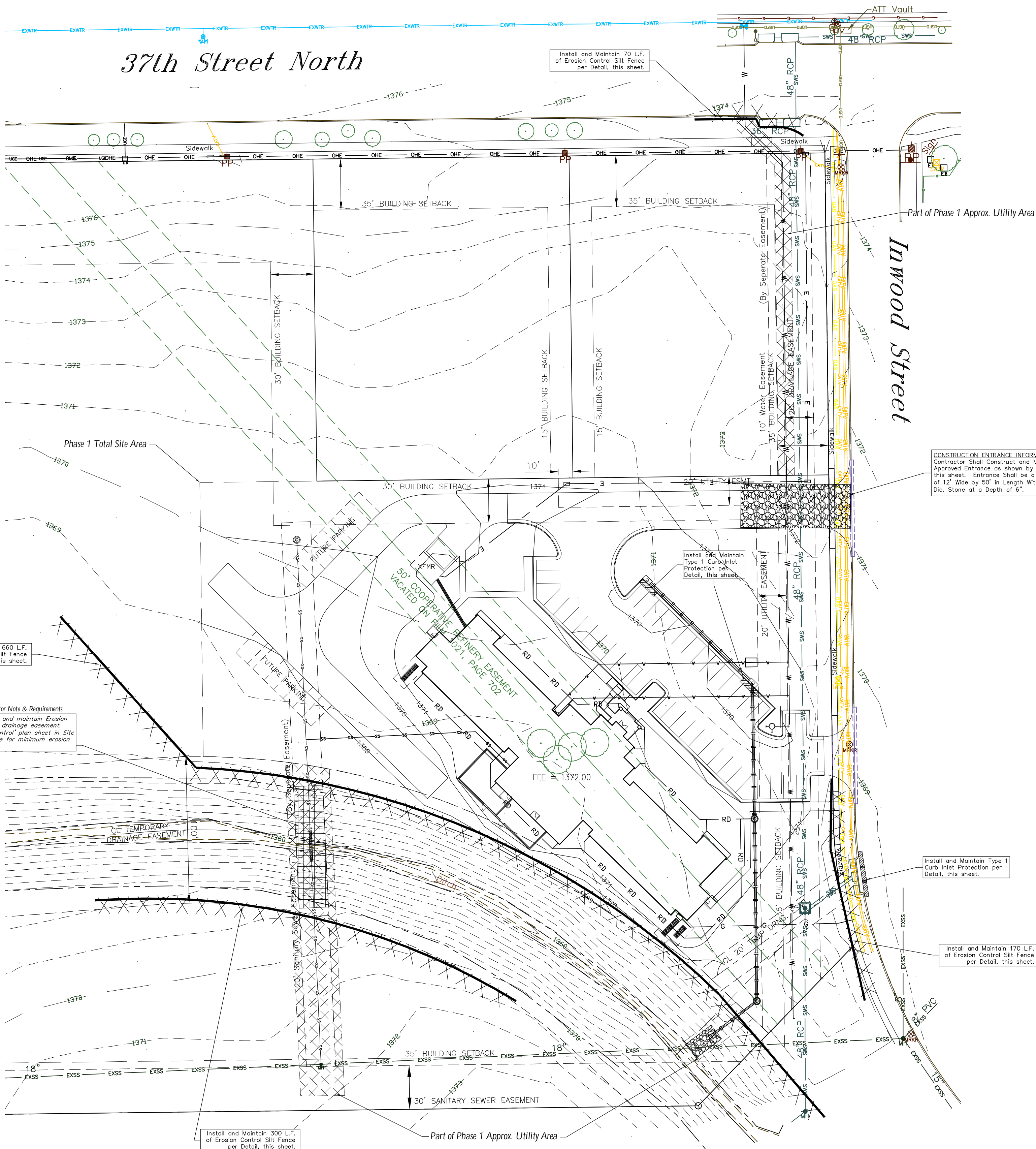


4 6" CONCRETE PAVEMENT
 NOT TO SCALE (Always refer to Geotechnical Report prior to Construction)



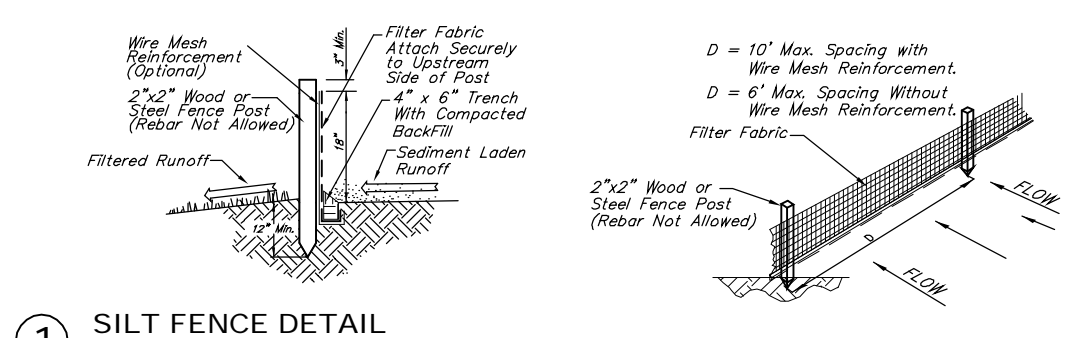
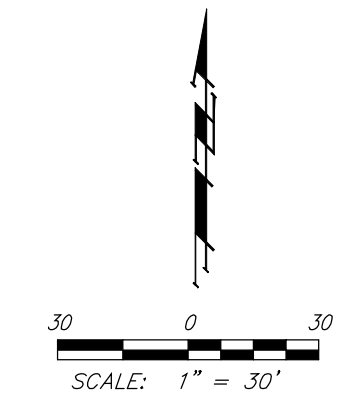
5 8" CONCRETE PAVEMENT
 NOT TO SCALE (Trash & Transformer Area)

For Reference Only
 Not To Scale

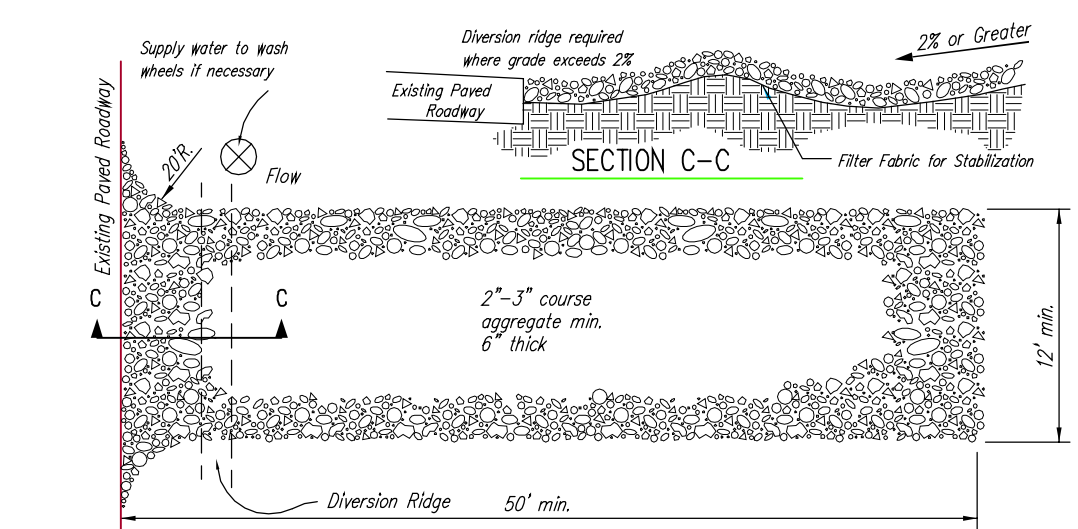


EROSION CONTROL NOTES:

- No land clearing or grading shall begin until all applicable erosion control measures have been installed. This project is subject to this SWPP Plan. The Contractor shall comply with any unusual requirements as necessary for the site to be in compliance during construction, per this plan and City specs (See #10).
- All exposed areas shall be mulched (or mulched and seeded) as specified within 14 days of final GRADING.
- Should construction stop for longer than 14 days, the site shall be mulched (or mulched and seeded).
- Site inspections of all project areas, even stabilized areas, shall be at least once every 14 days and within 24 hours after a precipitation event of 1/4" or greater. Corrections are required to be fixed within 7 calendar days of the inspection.
- This plan shall not be considered all inclusive as the contractor shall take all necessary precautions to prevent soil sediment from leaving the site.
- Contractor shall comply with all state and local ordinances that apply.
- Additional erosion and sediment control measures will be installed if deemed necessary by site inspection.
- Land disturbing activities shall not commence until approval to do so has been received by governing authorities.
- If installation of storm drainage system should be interrupted by weather or nightfall, the pipe ends shall be covered with filter fabric.
- This SWPP Plan should be in job trailer and/or on site at all times. The Contractor is responsible for any needed changes, updates or maintenance to BMP's on site. This plan may change and updates need to be recorded and documented on the plan. This plan is a flexible plan, due to changing site conditions and weather. Please inform Landscape Architect and/or Engineer of changes to plan.
- ANY substitutions for the sediment control devices shown, must be approved by the Landscape Architect and/or Engineer prior to any uses on site.
- An NPDES Permit Application has been submitted for this property. A copy of this application must be kept at the job site for the duration of the construction process.



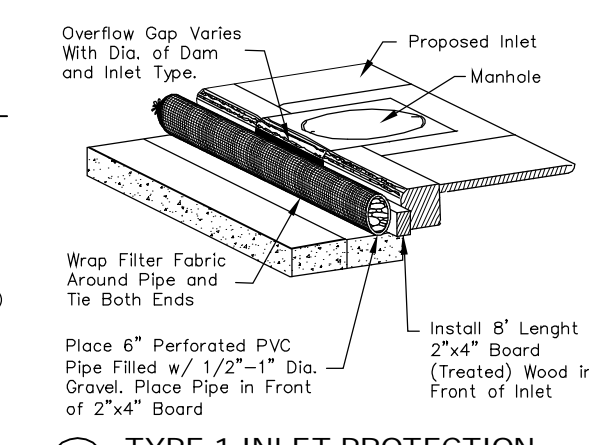
1 SILT FENCE DETAIL
NOT TO SCALE



2 STABILIZED CONSTRUCTION ENTRANCE
NOT TO SCALE

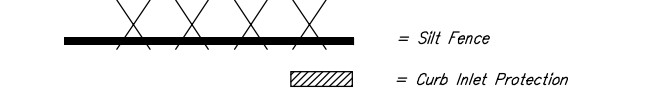
SITE INFORMATION

Total Area: ±594,584.2 sq. ft. (13.65 acres)
 Phase 1 Approx. Utility Area: ±11,000 sq. ft. (0.25 acres)
 (Utility extensions outside of Phase 1 Site Area)
 Phase 1 Total Site Area: ±112,783.5 sq. ft. (2.59 acres)
 Proposed Impervious Area: ±34,003.7 sq. ft. (0.78 acres)
 Proposed Building Area: ±13,891 sq. ft.
 Total Impervious Area:
 Proposed Impervious + Building: ±47,894.60 sq. ft. (1.10 acres)

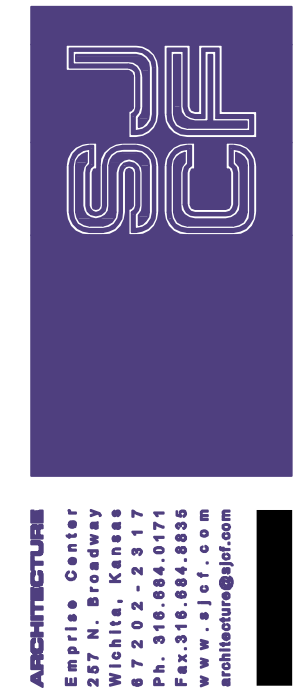


3 TYPE 1 INLET PROTECTION
NOT TO SCALE

EROSION CONTROL LEGEND



SITE EROSION CONTROL PLAN
Scale 1" = 30' 0"



WICHITA CHILDREN'S HOME BRIDGES APARTMENTS
37TH AND INWOOD

Revisions

Project Number: SJCF 5149.10
 Date: 06 SEPT 2013
 EROSION CONTROL

1" = 30' 0"
C28.1

For Reference Only

Not To Scale

	Wichita Children's Home Reference Plan for PPD Storm Water Sewer Improvements
	Baughman Company, P.A. 315 Ellis St. Wichita, KS 67211 P: 316.262.7271 F: 316.262.0349 ENGINEERING SURVEYING PLANNING LANDSCAPE ARCHITECTURE
PROJECT NUMBER	DESIGN MWS
REVISIONS	DRAWN MWS
	APPROVED DATE Aug. 2013
	SCALE Noted
	SHEET
	8 OF 9

