

PLOTED: Wednesday, January 22, 2014 @ 1:03PM

PRIVATE STORM WATER SEWER

TO SERVE

FRANKENBERRY DENTAL OFFICE

PROJECT NO. 0212PPD

THE CITY OF WICHITA, KANSAS
GARY JANZEN, P.E. - CITY ENGINEER

OCA NO. 607861

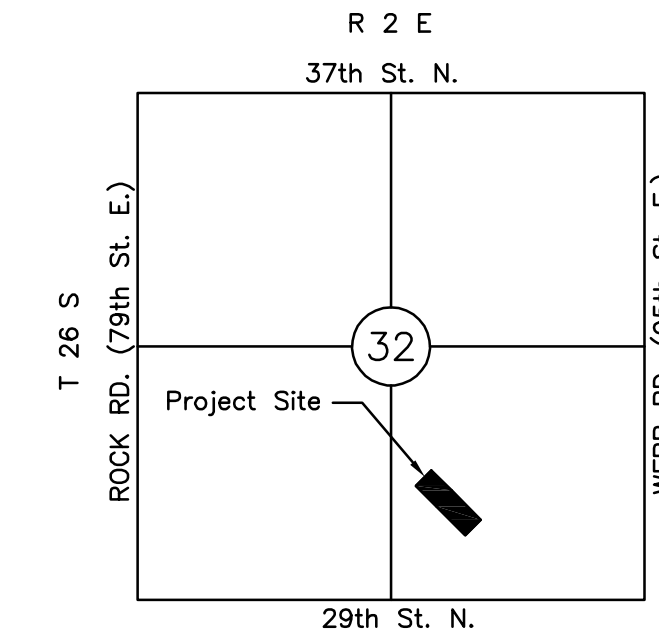
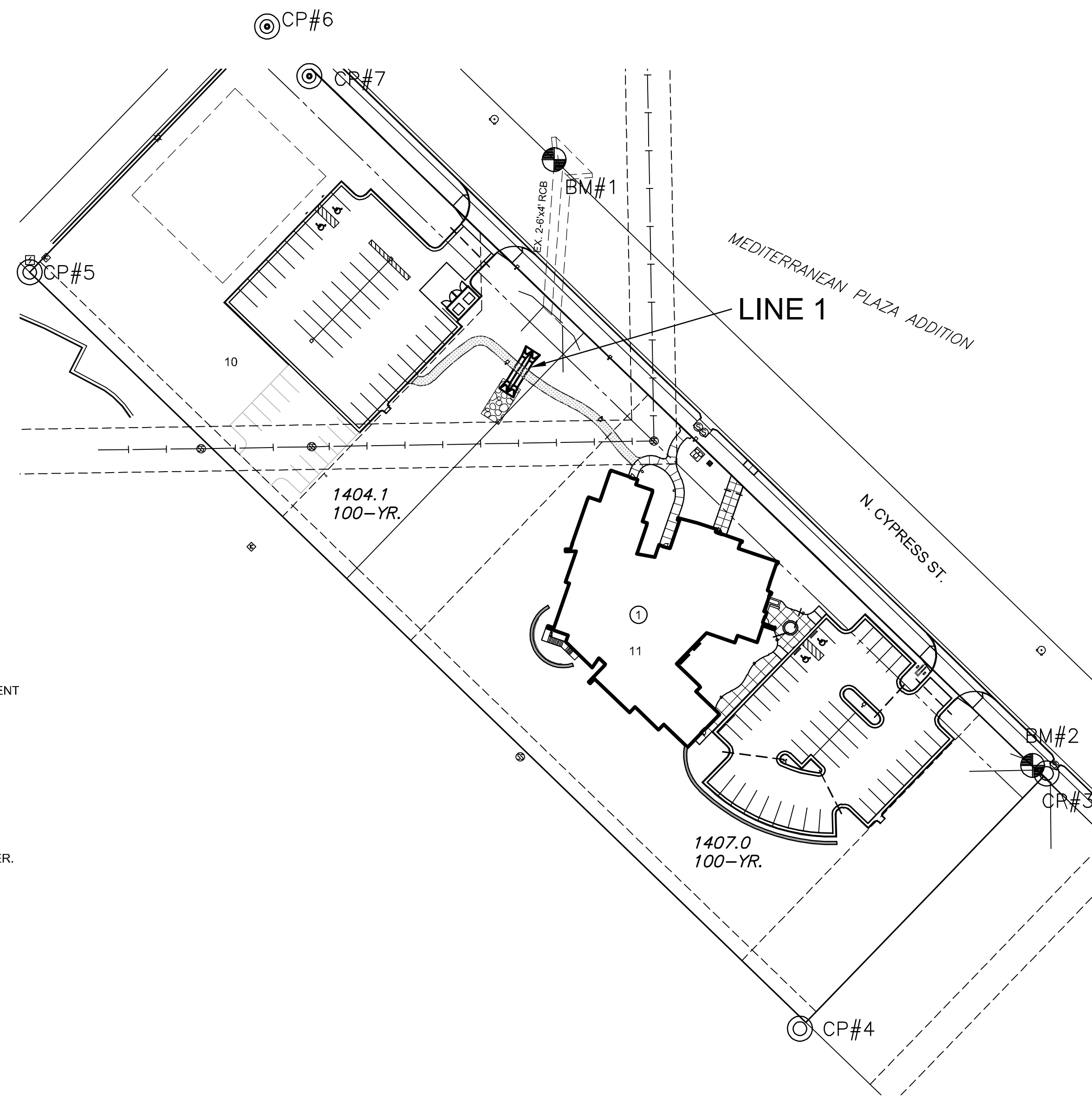
GENERAL NOTES

- UNLESS SHOWN OR OTHERWISE STATED ON THESE DRAWINGS, MATERIALS AND CONSTRUCTION SHALL BE IN ACCORDANCE WITH THE CITY OF WICHITA STANDARD SPECIFICATIONS.
- THE TOPS OF INLETS AND MANHOLES AS NOTED ON THE PLANS MAY VARY SO AS TO MEET PROPOSED TOP OF CURB ELEVATIONS OR PAVEMENT ELEVATIONS. THE FIELD ENGINEER SHALL LOCATE INLETS AND MANHOLES WITH REFERENCE TO PROPOSED PAVING PLANS OF THE PERTINENT STREETS.
- ALL CONCRETE SHALL BE STANDARD PAVING MIX UNLESS OTHERWISE NOTED.
- THE CONTRACTOR SHALL BE RESPONSIBLE FOR PRESERVING PROPERTY IRONS. THE CONTRACTOR SHALL BE REQUIRED TO RE-ESTABLISH ANY PROPERTY IRONS WHICH ARE DAMAGED OR DESTROYED BY HIS CONSTRUCTION OPERATIONS. SUCH IRONS SHALL BE RE-ESTABLISHED BY A LICENSED LAND SURVEYOR IN ACCORDANCE WITH STATE LAWS.
- TREES TO BE REMOVED ARE MARKED \otimes ALL TREES WHICH IN THE OPINION OF THE FIELD ENGINEER CAN BE SAVED, SHALL BE SAVED.
- CONTRACTOR SHALL NOTIFY UTILITY COMPANIES OF CONSTRUCTION SCHEDULING.
- EXISTING UTILITIES AND THEIR LOCATIONS, AS SHOWN ON THE PLANS REPRESENT THE BEST INFORMATION OBTAINABLE FOR DESIGN. LOCATION INFORMATION HAS BEEN OBTAINED FROM THE VARIOUS COMPANIES AND IS EITHER FROM COMPANY UTILITY DRAWINGS OR COMPANY PROVIDED FIELD LOCATIONS. THE PLAN LOCATIONS SHOWN ARE NOT GUARANTEED. ADDITIONAL EXISTING UTILITIES MAY ALSO BE ENCOUNTERED.
- CONTRACTOR WILL BE REQUIRED TO PROVIDE A MINIMUM ADVANCE NOTICE OF SEVENTY-TWO (72) HOURS TO UTILITY COMPANIES TO STARTING ANY EXCAVATION AS FOLLOWS:

KANSAS ONE-CALL	800-344-7233
OR LOCAL WICHITA	687-2470

THE CONTRACTOR MUST NOTIFY THE FOLLOWING IN CASE OF EMERGENCY:

COX COMMUNICATIONS (CABLE)	262-0661
WESTAR (ELECTRIC)	383-8600
KANSAS GAS SERVICE (GAS)	832-3101
SBC (TELEPHONE)	800-870-8390
CITY OF WICHITA WATER & SEWER	262-6000
- RUBBLE FROM THE REMOVAL OF MISCELLANEOUS STRUCTURES AND EXCESS EXCAVATION WHICH IS TO BE WASTED SHALL BE DISPOSED OF ON SITES TO BE PROVIDED BY THE CONTRACTOR. THESE SITES SHALL BE APPROVED BY THE ENGINEER AS TO SUITABILITY, APPEARANCE AND SITE LOCATION. LOCATIONS THAT, IN THE OPINION OF THE ENGINEER, WILL LEAVE AN UNSIGHTLY APPEARANCE WILL NOT BE APPROVED. ALL DISPOSAL SITES MUST BE APPROVED BY THE KANSAS DEPARTMENT OF HEALTH AND ENVIRONMENT. MATERIAL EITHER STOCKPILED OR DISPOSED OF IN A FLOOD PLAIN WOULD REQUIRE A KANSAS STATE BOARD OF AGRICULTURE PERMIT. ANY MATERIAL DUMPED IN WATERS OF THE UNITED STATES OR WETLANDS IS SUBJECT TO U.S. CORPUS OF ENGINEERS PERMITTING REGULATIONS. ANY MATERIAL BURIED OR STOCKPILED BEYOND APPROVED CONSTRUCTION LIMITS WOULD REQUIRE ADDITIONAL ARCHAEOLOGICAL INVESTIGATIONS UNLESS BURIED IN A PREVIOUSLY APPROVED BORROW LOCATION.
- CONTRACTOR TO COORDINATE WORK WITH OTHER UTILITY AND/OR PAVING CONTRACTORS ON SITE.
- CONTRACTOR SHALL RESEED AND MULCH ALL DISTURBED AREAS. COST SHALL BE CONSIDERED SUBSIDIARY TO SITE RESTORATION.
- CONTRACTOR TO REFER TO EROSION CONTROL PLAN FILED ON SITE FOR EROSION/SEDIMENT CONTROL.
- WORK DONE UNDER THIS PROJECT IS SUBJECT TO THE CITY OF WICHITA REQUIREMENTS FOR "CONSTRUCTION OF INFRASTRUCTURE IMPROVEMENTS BY PRIVATE CONTRACT." THE CONTRACTOR SHALL BE FAMILIAR AND COMPLY WITH ALL OF THE REQUIREMENTS, INCLUDING BONDING, INSPECTION, TESTING, NOTIFICATION, PROVIDING AS-BUILT DRAWINGS, PAYING FOR ALL NECESSARY CONNECTIONS AND/OR STREET REPAIR FEES AND PROVIDING PIPE MATERIAL AND OTHER CERTIFICATIONS.
- FUTURE MAINTENANCE OF STORM WATER SEWER AND SHALL BE COMPLETED BY THE OWNER.



VICINITY MAP

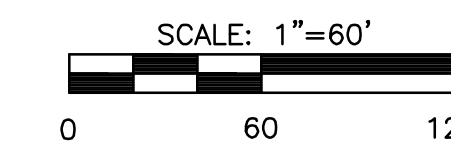
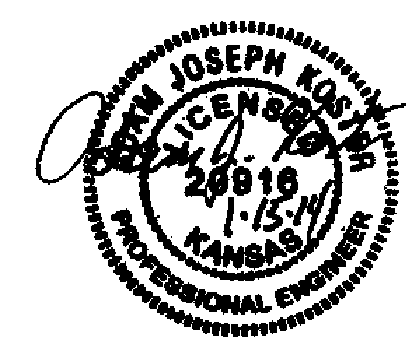
No Scale

INDEX TO DRAWINGS

SHEET NO.	DESCRIPTION
1	TITLE SHEET
2	SWS LINE 1
C1.4	EROSION CONTROL PLAN
C1.5	GRADING PLAN

BENCH MARKS/CONTROL POINTS

- BM#1** CHISELED SQUARE 526 FT. NORTHWESTERLY AND 70 FT. NORTHEASTERLY OF THE EAST MOST CORNER OF LOT 11, BLOCK 1, MEDITERRANEAN PLAZA ADDITION. ELEV.=1409.19 (NAVD 88)
- BM#2** CHISELED SQUARE 7 FT NORTHWESTLY OF THE EAST MOST CORNER OF LOT 11, BLOCK 1, MEDITERRANEAN PLAZA ADDITION. ELEV.=1409.24 (NAVD 88)
- CP#3** SET CHISELED "X" 2.0' NORTHEAST OF CORNER ON EXTENDED LOT LINE. N 1705856.24, E 1679125.16. ELEV.=1406.76 (NAVD 88)
- CP#4** SET 1/2" REBAR W/MKEC WITNESS ID CAP 6.0' SOUTHWEST OF CORNER ON EXTENDED LOT LINE. N 1705685.09, E 1678959.79. ELEV.=1405.12 (NAVD 88)
- CP#5** FND 5/8" REBAR W/RLS 1294 ID CAP N 1706194.51, E 1678441.37. ELEV.=1409.82 (NAVD 88)
- CP#6** FND 5/8" REBAR W/NO ID CAP N 1706359.98, E 1678601.00. ELEV.=1408.57 (NAVD 88)
- CP#7** MKEC CONTROL POINT N 1706326.50, E 1678629.52. ELEV.=1408.361 (NAVD 88)



APPROVED AS NOTED
BY CITY ENGINEER OF WICHITA,
BY STORMWATER DEPARTMENT

Engineering: *[Signature]* 1-21-14
Storm Water (Public Works): *[Signature]* 1-21-14

NOTE TO CONTRACTORS

Public Property:
Inspection and testing for the storm water sewer is to be provided by a Licensed Consulting Engineering Firm under contract with the Owner/Developer. Said inspection to be in accordance with the City of Wichita Standard Construction Engineering Practices and certified by a Professional Engineer licensed in the state of Kansas. No work shall be performed in dedicated easements or public rights-of-way by the Contractor without such inspection, nor shall any work be commenced without written authorization by the City Engineer. All construction and materials shall comply with the City of Wichita Specifications and Standards (on file and available in the City Engineer's Office).

AS BUILTS

Contractor: Ewertz Excavation 05/16/2014	Project Inspector: Tom Jones 117 E. Lewis, Wichita, KS 67202 (316)264-0242
---	--



PRIVATE STORM WATER SEWER PLAN FOR
FRANKENBERRY DENTAL OFFICE
MEDITERRANEAN PLAZA ADDITION

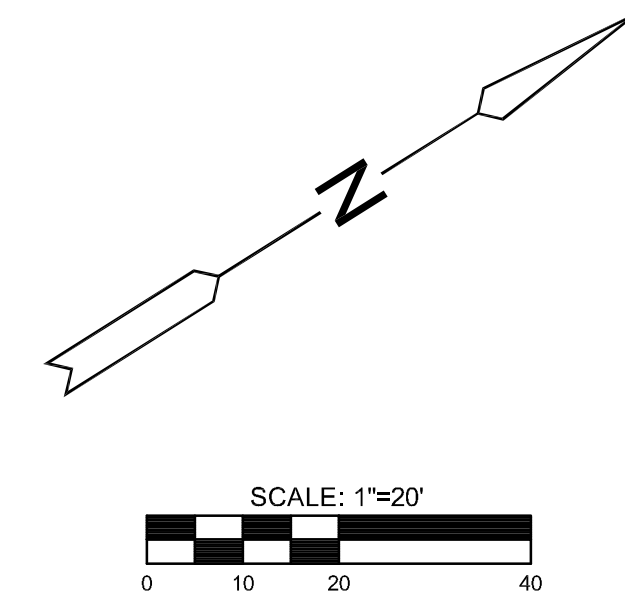
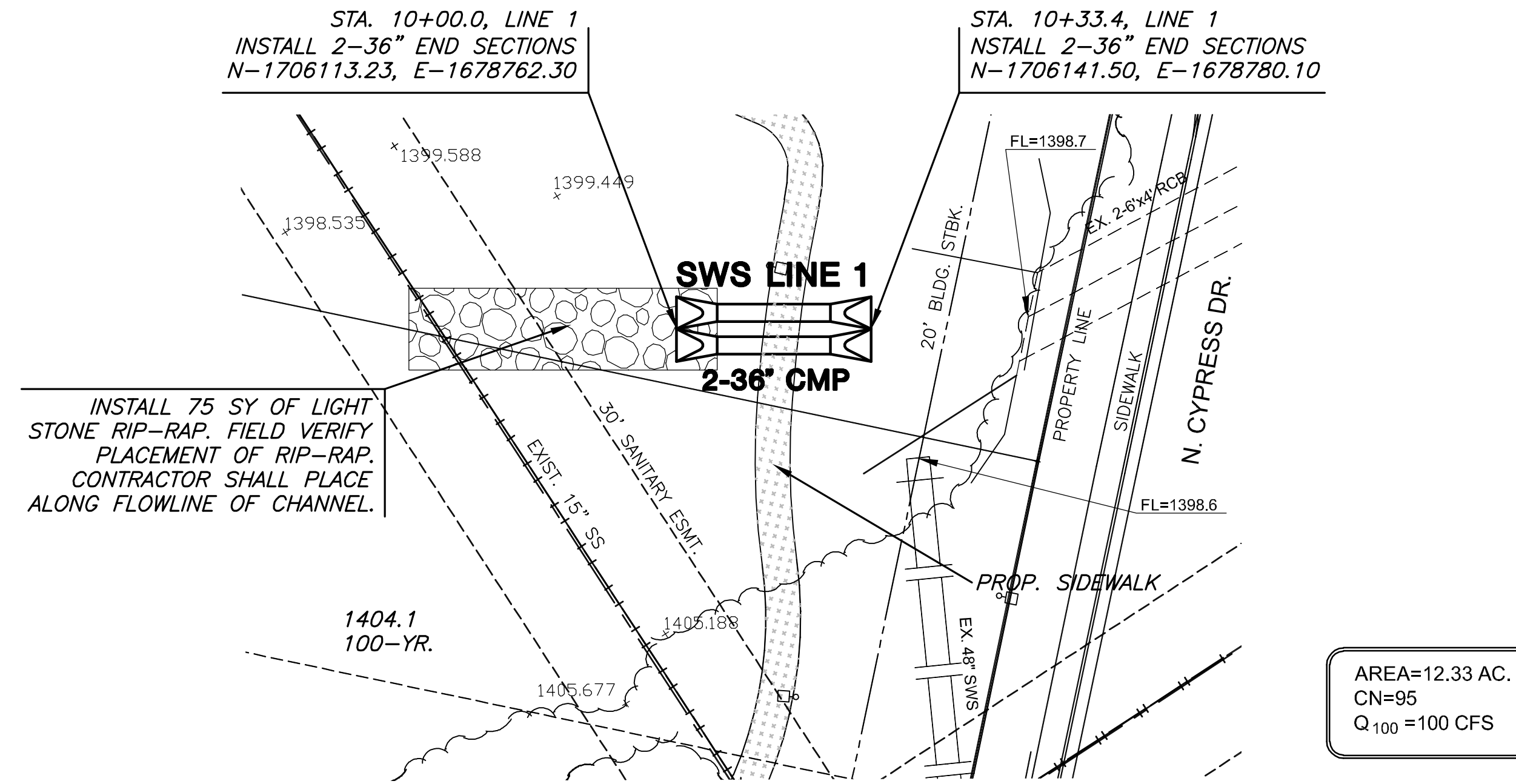
©2013 MKEC Engineering All Rights Reserved
www.mkec.com
These drawings and their contents, including, but not limited to, all concepts, designs, & ideas are the exclusive property of MKEC Engineering (MKEC), and may not be used or reproduced in any way without the express consent of MKEC.

TITLE SHEET

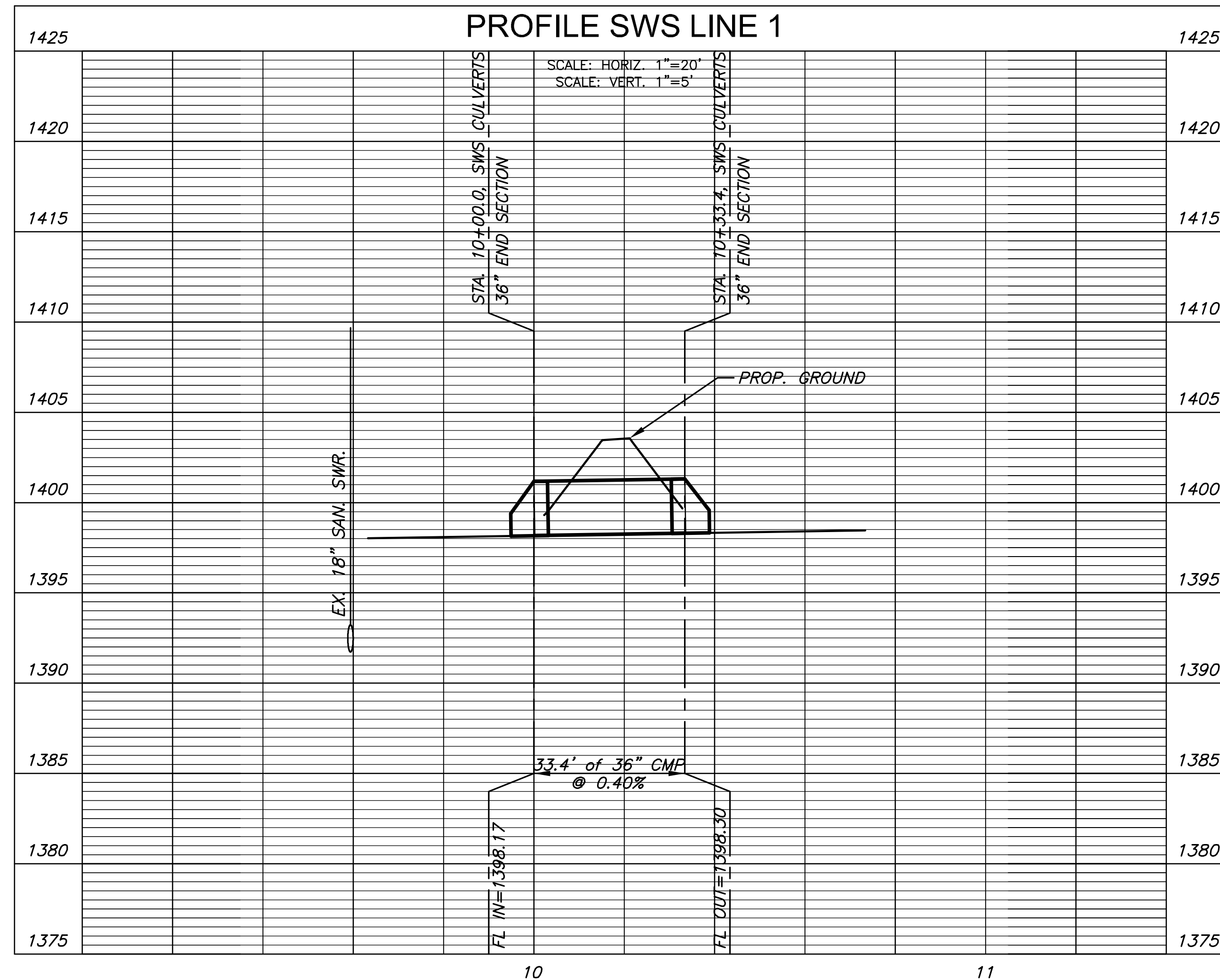
PROJECT NO.	PPD0212		
DATE	JAN. 2014		
SCALE	1"=60'		
DESIGNED	DRAWN	CHECKED	
SPE	BKS	GJA	
#	NO.	REVISION	DATE

SHEET NO.
1 OF 2

J:\PROJECTS\2013\1301060331_HFC FRANKENBERRY NEW DENTAL CLINIC\5-CIVIL\CAD\SWS\13351_SWS TITLE.DWG



PLAN SWS LINE 1
PROFILE SWS LINE 1



STORM WATER SEWER PLAN FOR
FRANKENBERRY DENTAL OFFICE
MEDITERRANEAN PLAZA ADDITION

©2013 MKEC Engineering All Rights Reserved www.mkec.com
These drawings and their contents, including, but not limited to, all concepts, designs, & ideas are the exclusive property of MKEC Engineering (MKEC), and may not be used or reproduced in any way without the express consent of MKEC.

SWS LINE 1

PROJECT NO.	PPD0212		
DATE	JAN. 2014		
SCALE	1"=20'		
DESIGNED	DRAWN	CHECKED	
SPE	BKS	GJA	
#	NO.	REVISION	DATE

AS BUILTS

117 E. Lewis,
Wichita, KS 67202 (316)264-0242

J:\PROJECTS\2013\1301060351_HFG FRANKENBERRY NEW DENTAL CLINIC\CIVIL\CAD\SWS\SWS LINE 1.DWG