

WATER DISTRIBUTION SYSTEM

CASA BELLA PHASE 3

PROJECT NO. 448-90145

O.C.A NO. 735504

BENCH MARKS

BENCHMARK: CHISELED SQUARE ON THE TOP OF CURB ON THE NORTHWEST CURB RETURN, NORTHWEST OF MICHELLE AND TARA FALLS, AT THE SOUTH CORNER OF LOT 4, BLOCK 2, TARA FALLS ADDITION, ELEVATION = 1350.81 (NAVD88)

INDEX OF SHEETS

- | | |
|-------|-------------------------|
| 1. | TITLE |
| 2. | WATER DETAILS |
| 3. | LINE 1 PLAN/PROFILE |
| 4. | LINE 2 PLAN/PROFILE |
| 5. | EROSION CONTROL PLAN |
| 6-10. | EROSION CONTROL DETAILS |
| 11. | COORDINATE BUBBLE MAP |
| 12. | W. BUBBLE MAP |
| 13. | FINAL PLAT |

GENERAL NOTES

1. Contractor will be required to provide a minimum advance notice of seventy-two (72) hours to utility companies prior to starting any excavation as follows:

Kansas One-Call 687-2470

The Contractor must notify the following in case of an emergency:

Cox Communications	260-7204
Kansas Gas Service	888-482-4950
Westar	383-8600
AT&T	1-800-286-8313
City of Bel Aire Water Department	744-2888
City of Bel Aire Sewer	744-2888
City of Wichita Water Department	262-6000

2. Underground utility service lines and overhead utility pole lines are to be adjusted as necessary by others prior to construction unless the plans specifically call for their adjustment by the Contractor or unless the plans specifically identify a utility to be adjusted by its owner during construction. Existing utilities and their location, as shown on the plans, represent the best information obtainable for design. Location information has been obtained from the various utility companies and is either from company record drawings or company-provided field locations. The Contractor will be required to work around existing utilities within the right-of-way which do not conflict with proposed construction.

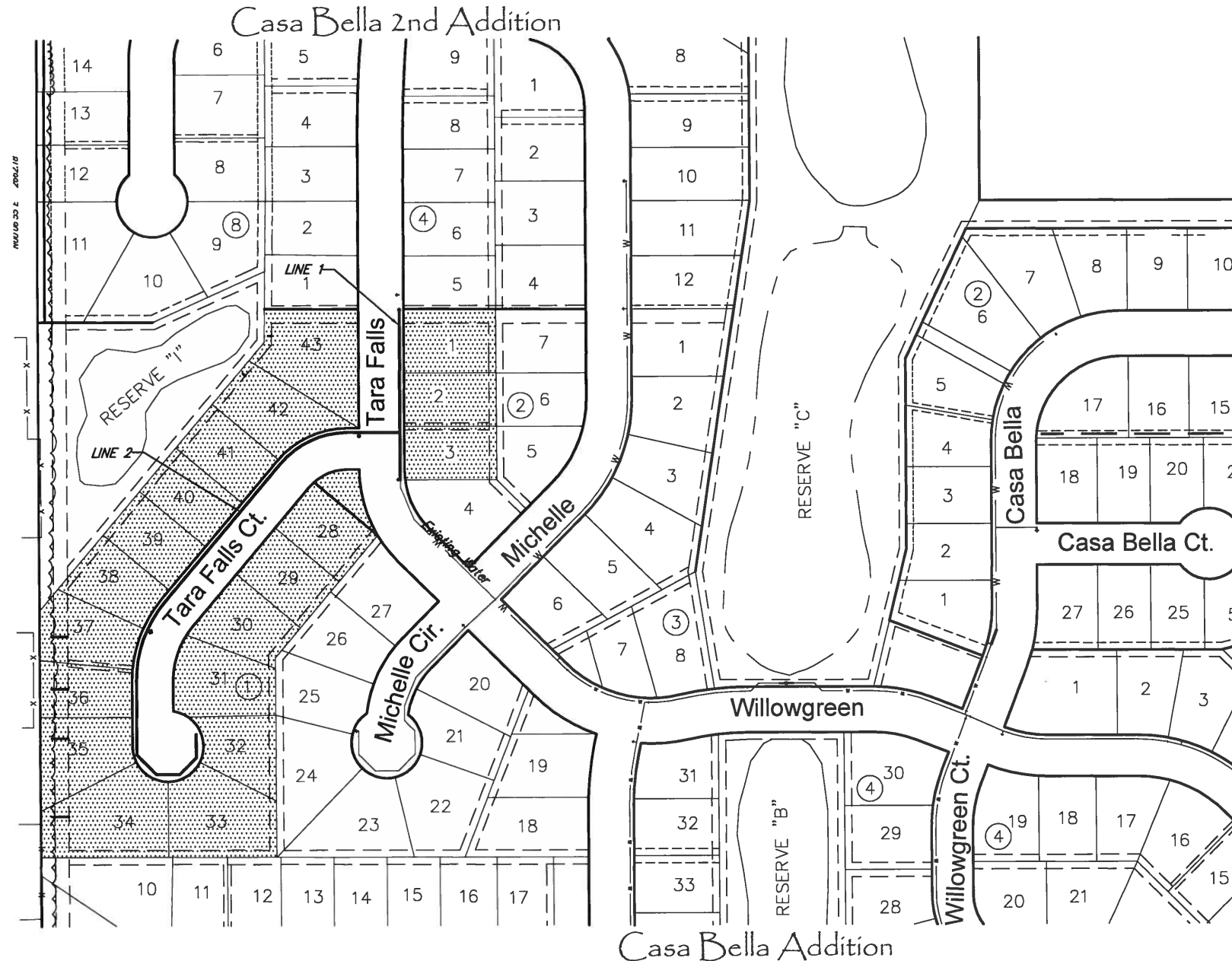
3. Rubble from the removal of miscellaneous structures and excess excavation which is to be wasted shall be disposed of on sites to be provided by the Contractor. These sites shall be approved by the Engineer as to suitability, appearance and site location. Locations that, in the opinion of the Engineer, will leave an unsightly appearance will not be approved.

4. All disposal sites must be approved by the Kansas Department of Health and Environment. Material either stockpiled or disposed of in a flood plain would require a Kansas State Board of Agriculture permit. Any material dumped in waters of the United States or wetlands is subject to U.S. Corps permitting regulations. Any material buried or stockpiled beyond approved of Engineers construction limits would require additional archeological investigations unless buried in a previously approved borrow location.

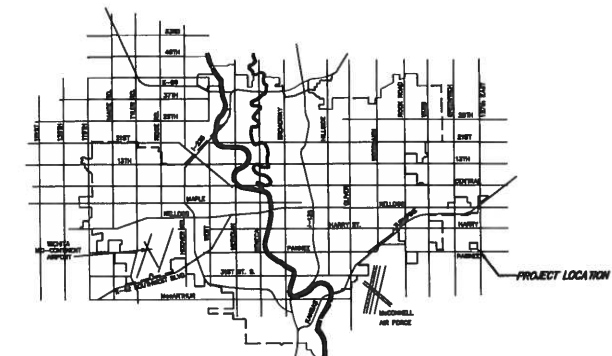
5. The Contractor shall give all property owners and/or tenants of developed property directly abutting the construction of this project a minimum of ten (10) days advance notice prior to start of construction.

6. Temporary Seeding (if required to meet SWPPP requirements) shall be incidental to the bid item for "Site Restoration".

7. Any items of work indicated on the plans that are not specifically identified as bid items shall be incidental to the bid item for "Site Clearing".



1" = 100'



VICINITY MAP

IMPROVEMENT DISTRICT

Gary Janzen PE, City Engineer
CITY OF WICHITA, KANSAS



ENGINEERING | SURVEYING | LANDSCAPE ARCHITECTURE | GOVERNMENT
824 NORTH MAIN WICHITA, KANSAS 67203 P (316) 264-8008 F (316) 264-4821
WWW.RB-KANSAS.COM