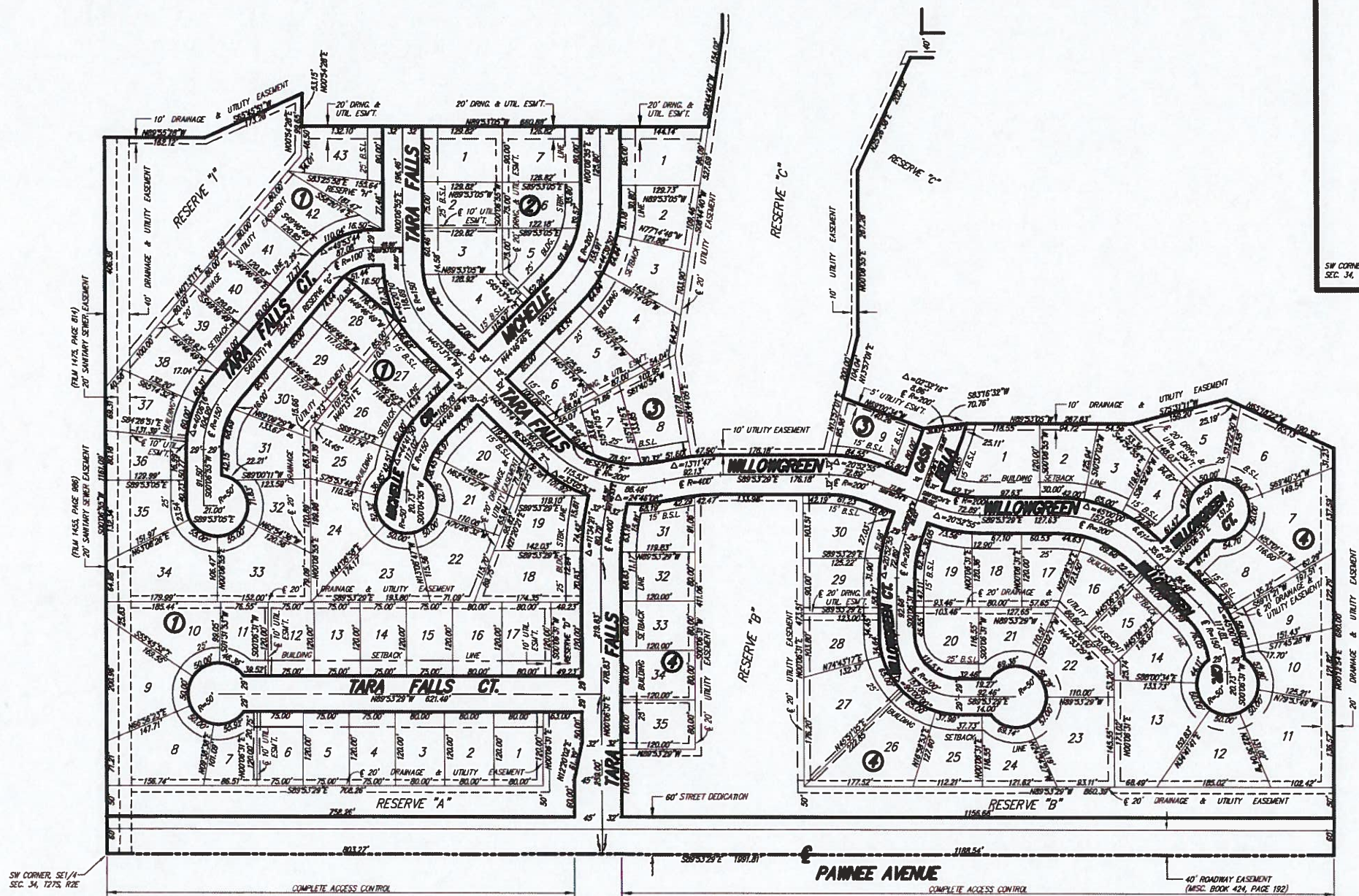
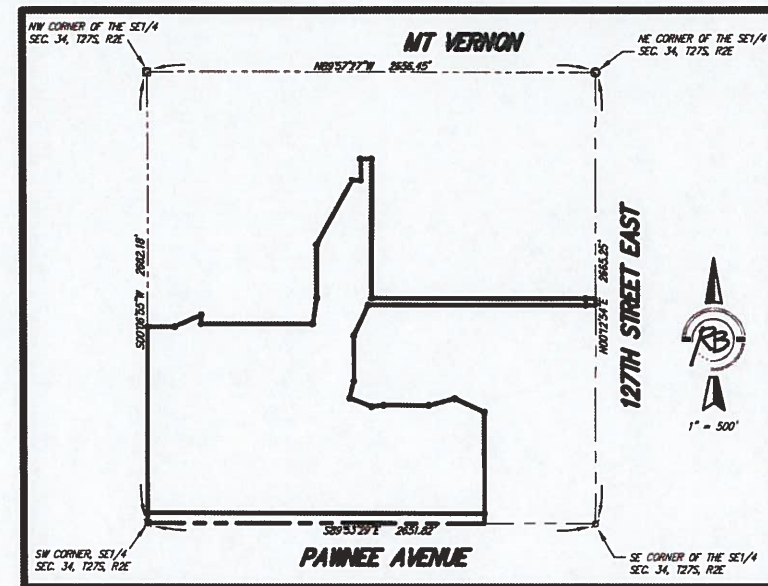


CASA BELLA

Wichita, Sedgwick County, Kansas



1" = 100'

BENCH MARK: SFB BRASS DISC 55.45' E.
 & 5.15' S. OF THE N.W. COR. SW 1/4, SEC. 35,
 127S, R2E
 ELEV. = 1348.35 (NGVD) = 160.95 (CITY DATUM)

SURVEY MARKER LEGEND

- = PK NAIL IN CONCRETE
- = 1/2" IRON PIPE
- = 3/4" IRON PIPE
- ⊕ = 5/8" REBAR W/ CARBER CAP (FOUND)
- ⊗ = 1" BAR (FOUND)
- ⦿ = 5/8" REBAR W/ RAB CAP (SET)

MINIMUM BUILDING PAD ELEVATION FOR LOWEST OPENING INTO STRUCTURES		
BLOCK	LOT NO.	ELEVATION (N.G.V.D.)
1	37, 38, 39, 40, 41, 42, 43	1350.50
	1, 2, 3, 4, & P	1344.50
4	26, 27, 28, 29, 30, 31, 32, 33, 34, 35	1348.50

