

PRIVATE SANITARY SEWER EXTENSION TO SERVE TARGET OUTPARCEL PHASE V NEWMARKET SQUARE

PRIVATE PROJECT NO. 2190 PPS (607861)

CITY OF WICHITA, KANSAS

GARY JANZEN, P.E. - CITY ENGINEER

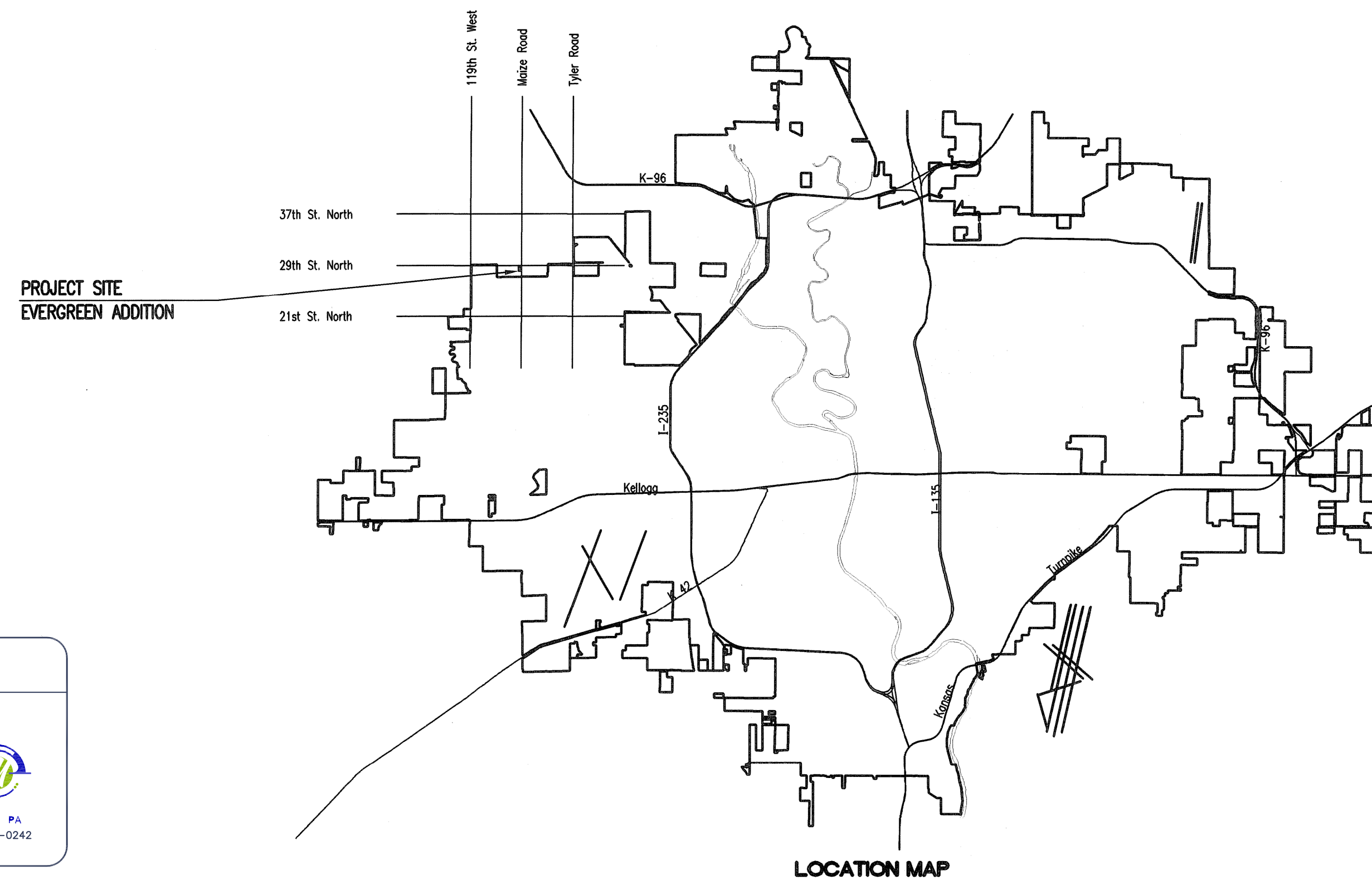
T. Mason - City of Wichita, Inspector
Release Date: 06/11/2014
:APRosas 06/17/2014

DEVELOPER CONTACT

MR. DAVID HAMBRICK
SLAWSON COMPANIES
727 N. WACO, SUITE 400
WICHITA, KANSAS 67203
(316) 263-3201

INDEX OF SHEETS

SHEET NO. C4.1	PPS TITLE SHEET
SHEET NO. C4.2	PPS KEY MAP AND GENERAL NOTES
SHEET NO. C4.3	SANITARY SEWER LINE NO. 1
SHEET NO. C4.4	PRECAST SANITARY SEWER MANHOLE
SHEET NO. C4.5	MANHOLE FRAME AND COVER (SANITARY SEWER)
SHEET NO. C4.6	VERTICAL RISER ASSEMBLY SEWER DETAILS
SHEET NO. C2.1	PLAT
SHEET NO. C6.1-C6.3	SOIL EROSION BMP DETAILS



AS BUILTS	
Contractor: McCullough Excavation, Inc. 5/20/2014	Project Inspector: Larry Gann KEMILLER ENGINEERING PA 117 E. Lewis, Wichita, KS 67202 (316)264-0242

APPROVED AS NOTED
BY CITY ENGINEER OF WICHITA

Engineering *Rebecca Drief* 4/9/14

NOTE TO CONTRACTORS

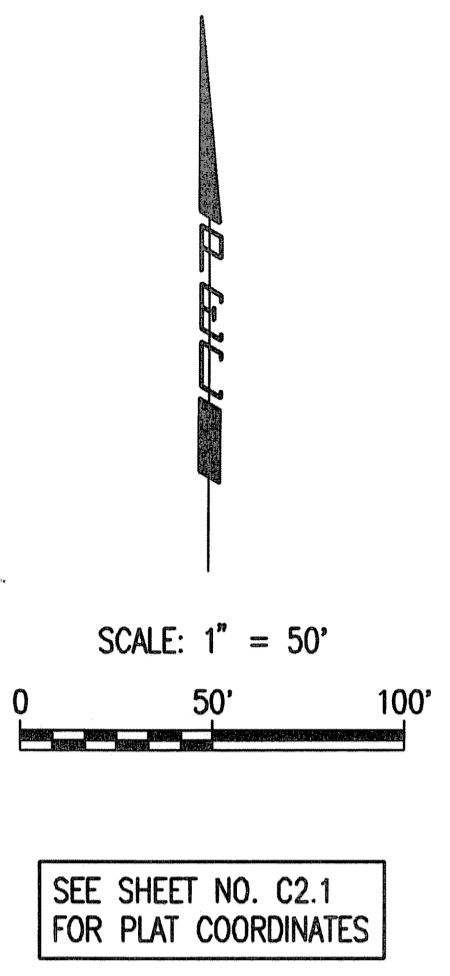
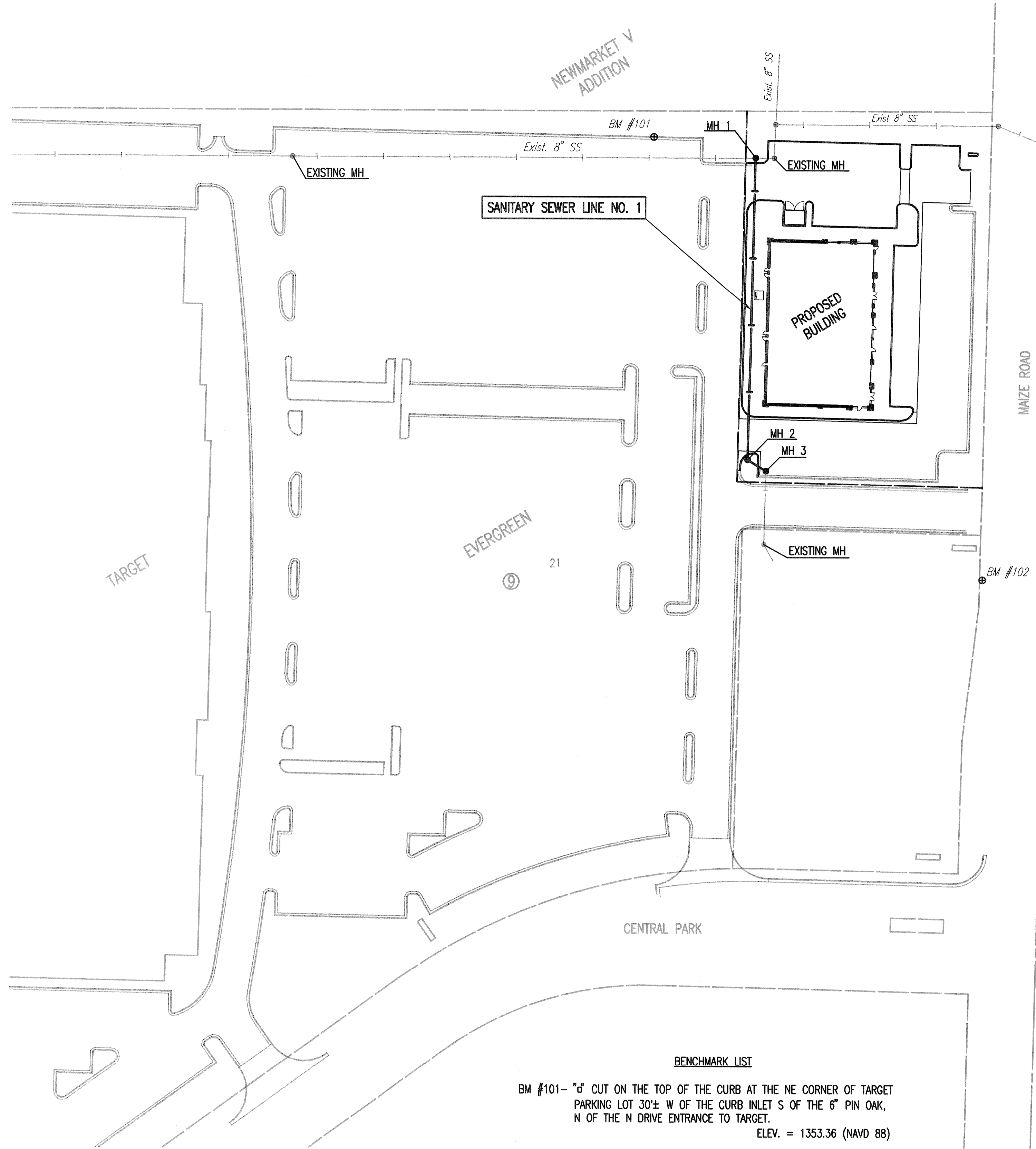
Inspection and testing for this project are to be provided by a Licensed Consulting Engineering Firm under contract with the Owner/Developer. Said Inspection to be in accordance with the City of Wichita standard construction engineering practices and certified by a Licensed Professional Engineer. No work shall be performed in dedicated easements or public right-of-way by the Contractor without such Inspection, nor shall any work be commenced without written authorization by the City Engineer.

APRIL 2014
PLANS PREPARED BY
PROFESSIONAL ENGINEERING CONSULTANTS, P.A.
ENGINEERS
WICHITA, KANSAS



Saved 04-08-2014 3:52:57 PM by CSL
Plot Scale 1:2,894 04-08-2014 4:10:45 PM by CSL
U:\Wichita-Cont\2014\14059\000\Drawings\PPS\14059-000-PPS-C4.1-PPS-TITLE

Sheet 04-08-2014 4:41:41 PM by CSI
 Plot Scale 1" = 50' 04-08-2014 4:42:23 PM by CSI
 U:\Wichita-Civil\2014\14059-000\Drawings\PPS\14059-000-PPS-C4.2-PPS-KEY MAP AND GENERAL NOTES



GENERAL NOTES

- ALL CONSTRUCTION AND MATERIALS TO COMPLY WITH CITY OF WICHITA, KANSAS SPECIFICATIONS AND STANDARDS.
- ALL ELEVATIONS SHOWN ARE NAVD 88 DATUM.
- CONTRACTOR WILL BE REQUIRED TO PROVIDE A MINIMUM ADVANCE NOTICE OF SEVENTY-TWO (72) HOURS TO UTILITY COMPANIES PRIOR TO STARTING ANY EXCAVATION AS FOLLOWS:
 KANSAS ONE-CALL 687-2470 or 811
 THE CONTRACTOR MUST NOTIFY THE FOLLOWING IN CASE OF AN EMERGENCY:
 EMERGENCY DISPATCH 911
 COX COMMUNICATIONS 800-778-9140
 KANSAS GAS SERVICE 888-482-4950
 WESTAR ENERGY 800-383-1183
 BLACK HILLS ENERGY 800-694-8989
 AT&T 800-286-8313
 WICHITA WATER UTILITIES (SS AND WL) 262-6000
- THE CONTRACTOR SHALL LIMIT THE EXTENT OF TRENCH TO REMAIN OPEN OVERNIGHT AND WEEKENDS TO LESS THAN 50 FEET. ANY OPEN TRENCH SHALL BE BARRICADED/PROTECTED WITH ORANGE CONSTRUCTION FENCING.
- AT LEAST 72 HOURS PRIOR TO BEGINNING EXCAVATION (EXCLUDING WEEKENDS AND HOLIDAYS), THE CONTRACTOR SHALL CONTACT THE KANSAS ONE-CALL SYSTEM, A UTILITY LOCATION SERVICE, AT (316) 687-2470 AND CITY OF WICHITA UTILITY LOCATES, WWW.WICHITA.GOV/LOCATE (268-4260) TO REQUEST THE LOCAL UTILITY COMPANIES MARK ANY EXISTING LINES WITHIN THE PROJECT AREA.
- UNDERGROUND UTILITY SERVICE LINES AND OVERHEAD UTILITY POLE LINES ARE TO BE ADJUSTED AS NECESSARY BY OTHERS PRIOR TO CONSTRUCTION UNLESS THE DRAWINGS SPECIFICALLY CALL FOR THEIR ADJUSTMENT BY THE CONTRACTOR OR UNLESS THE DRAWINGS SPECIFICALLY IDENTIFY A UTILITY TO BE ADJUSTED BY ITS OWNER DURING CONSTRUCTION. EXISTING UTILITIES AND THEIR LOCATIONS, AS SHOWN ON THE DRAWINGS, REPRESENT THE BEST INFORMATION OBTAINABLE FOR THE DESIGN. THE CONTRACTOR WILL BE REQUIRED TO WORK AROUND EXISTING UTILITIES WHICH DO NOT CONFLICT WITH PROPOSED CONSTRUCTION.
- THE CONTRACTOR SHALL BE RESPONSIBLE FOR PRESERVING PROPERTY IRONS. THE CONTRACTOR WILL BE REQUIRED TO RE-ESTABLISH ANY PROPERTY IRONS WHICH ARE DAMAGED OR DESTROYED BY HIS CONSTRUCTION OPERATIONS. SUCH IRONS SHALL BE RE-ESTABLISHED BY A LICENSED LAND SURVEYOR IN ACCORDANCE WITH STATE LAWS.
- CONTRACTOR SHALL PROVIDE POSITIVE DRAINAGE AWAY FROM ALL MANHOLE COVERS.
- MANHOLES SHALL BE TYPE "P" MANHOLES. MANHOLES SHALL BE CONSTRUCTED IN ACCORDANCE WITH THE CITY OF WICHITA, KANSAS SPECIFICATIONS, STANDARDS AND THE STANDARD DETAIL DRAWINGS.
- RUBBLE FROM THE REMOVAL OF MISCELLANEOUS STRUCTURES INCLUDING ANY TREES REMOVED, TREE TRIMMINGS, AND EXCESS EXCAVATION WHICH IS TO BE WASTED SHALL BE DISPOSED OF ON SITES PROVIDED BY THE CONTRACTOR. THESE SITES SHALL ALSO BE APPROVED BY THE ENGINEER AS TO SUITABILITY, APPEARANCE, AND SITE LOCATION. LOCATIONS THAT, IN THE OPINION OF THE ENGINEER, WILL LEAVE AN UNSIGHTLY APPEARANCE WILL NOT BE APPROVED. ALL DISPOSAL SITES MUST BE APPROVED BY THE KANSAS DEPARTMENT OF HEALTH AND ENVIRONMENT. MATERIAL EITHER STOCKPILED OR DISPOSED OF IN A FLOOD PLAIN WILL REQUIRE A KANSAS STATE BOARD OF AGRICULTURE PERMIT. ANY MATERIAL DUMPED IN WATERS OF THE UNITED STATES OR WETLANDS IS SUBJECT TO U.S. CORPS OF ENGINEERS PERMITTING REGULATIONS. ANY MATERIAL BURIED OR STOCKPILED BEYOND APPROVED CONSTRUCTION LIMITS MAY REQUIRE ARCHAEOLOGICAL INVESTIGATIONS UNLESS BURIED IN A PREVIOUSLY APPROVED DISPOSAL LOCATION.
- ALL APPROVED EXCESS EXCAVATION WHICH IS TO BE WASTED SHALL BE STOCKPILED AS DIRECTED BY THE ENGINEER AT NO ADDITIONAL COST TO THE OWNER. STOCKPILE LOCATIONS SHALL BE AS DIRECTED BY THE OWNER AND IN ACCORDANCE WITH GENERAL NOTE NO. 10 ABOVE.
- ALL LAWN/TURF AREAS DISTURBED BY CONSTRUCTION OF THE PROPOSED IMPROVEMENTS SHALL BE RESTORED WITH THE SAME GRASS/SOD AS EXISTING. RESTORATION OF DISTURBED AREAS SHALL INCLUDE, BUT NOT BE LIMITED TO, TOP SOIL PREPARATION, SEEDING, MULCH, AND/OR RESEEDING. ALL SEEDING/SODDING WORK SHALL BE IN ACCORDANCE WITH THE CITY OF WICHITA STANDARD SPECIFICATIONS AND THE CITY OF WICHITA ADMINISTRATIVE REGULATION NO. AR6.5 WHICH GOVERNS CLEANUP AND RESTORATION OR REPLACEMENT FOLLOWING CONSTRUCTION.
- THE CONTRACTOR SHALL SEED ALL AREAS DISTURBED BY CONSTRUCTION ACTIVITIES WITH TEMPORARY RYE GRASS. RYE GRASS SEED SHALL BE PLANTED AT A MINIMUM RATE OF SIX (6) POUNDS PER ONE THOUSAND (1,000) SQUARE FEET. THIS TEMPORARY SEEDING MAY BE STOPPED ONLY IF OTHER SEEDING IS REQUIRED IN ACCORDANCE WITH GENERAL NOTE NO. 12 ABOVE. TEMPORARY SEEDING OR PERMANENT SEEDING/SODDING SHALL BE APPLIED WITHIN 14 DAYS AFTER THE AREA HAS BEEN DISTURBED.
- THE CONTRACTOR SHALL AVOID REMOVAL OR TRIMMING OF ANY TREES OR SHRUBS WHERE POSSIBLE. WHERE THE CONTRACTOR BELIEVES THE REMOVAL OR TRIMMING IS UNAVOIDABLE, HE SHALL COORDINATE SUCH WORK WITH THE ENGINEER.
- THE CONTRACTOR SHALL PREVENT ANY CONSTRUCTION DEBRIS FROM ENTERING THE EXISTING SANITARY SEWER DURING CONSTRUCTION.
- THE CONTRACTOR SHALL GIVE ALL PROPERTY OWNERS AND/OR TENANTS OF DEVELOPED PROPERTY ABUTTING THE CONSTRUCTION OF THIS PROJECT A MINIMUM OF TEN (10) DAYS ADVANCE NOTICE PRIOR TO START OF CONSTRUCTION.
- THE CONTRACTOR IS REQUIRED TO MAINTAIN CONTINUOUS FLOW OF SEWAGE IN EXISTING MAINS AT ALL TIMES.
- THE CONTRACTOR SHALL NOT BURY MANHOLES THAT HAVE RIM ELEVATIONS WHICH ARE LOWER THAN EXISTING GROUND AT THE MANHOLE. THE GROUND AROUND SUCH MANHOLES AND ALONG THE SEWER ALIGNMENT SHALL BE BACKFILLED TO THE APPROXIMATE ELEVATION OF THE PROPOSED GROUND ELEVATION SHOWN ON THE PLAN/PROFILE SHEETS. THE CONTRACTOR SHALL PROVIDE DRAINAGE AWAY FROM THESE MANHOLES AND SEWER LINES BY CONSTRUCTION OF TEMPORARY DITCHES OR SLOPING THE GROUND AS REQUIRED. ALL COSTS FOR THIS WORK SHALL BE CONSIDERED SUBSIDIARY TO THE INSTALLED BID PRICE FOR MANHOLES OR PIPE.
- THE CONTRACTOR SHALL PROVIDE MOUNDED EARTH AT MANHOLES AND CLEANOUTS THAT HAVE TOP ELEVATIONS GREATER THAN 1 FOOT ABOVE EXISTING GRADE, AS SHOWN ON THE DRAWINGS.
- INTERURBAN TRAFFIC GENERATED OUTSIDE THE PROJECT AREA AND LOCAL BUSINESS OR RESIDENTIAL TRAFFIC GENERATED WITHIN THE PROJECT AREA ARE TO BE CARRIED THROUGH CONSTRUCTION AS FURTHER PROMULGATED BY PROJECT SPECIAL PROVISIONS. THE CONTRACTOR SHALL UTILIZE BARRICADES, SIGNS, GUARDS, AND FLAGMEN IN ACCORDANCE WITH THE MANUAL ON UNIFORM TRAFFIC CONTROL DEVICES.
- WHERE INDICATED IN THE DRAWINGS, THE SANITARY SEWER EXCAVATION SHALL BE SAND FILLED AND FLUSHED (JETTED AND VIBRATED) WITH WATER PER THE REQUIREMENTS LISTED IN THE STANDARD SPECIFICATIONS FOR THE CITY OF WICHITA, UNLESS FLOWABLE FILL OR OTHER IMPROVED BACKFILL MATERIAL IS OTHERWISE SPECIFIED.
- THE SANITARY SEWER CONTRACTOR SHALL BE RESPONSIBLE FOR MAINTAINING THE EROSION CONTROL SHOWN THROUGH THE COMPLETION OF THIS PROJECT. INSTALLATION OF THESE BMP'S DOES NOT RELIEVE THE CONTRACTOR OF THE RESPONSIBILITY OF ABATING SOIL EROSION.
- SANITARY SEWER TO BE ABANDONED IN PLACE, AS INDICATED ON PLAN SHEET NO. C4.3, SHALL BE CAPPED AND THOROUGHLY FLUSHED. EXCAVATABLE FLOWABLE FILL SHALL BE PLACED OVER ABANDONED SANITARY SEWER. ABANDONED SEWER SHALL BE FILLED WITH JETTED SAND BACKFILL.

BENCHMARK LIST

- BM #101- "d" CUT ON THE TOP OF THE CURB AT THE NE CORNER OF TARGET PARKING LOT 30'± W OF THE CURB INLET S OF THE 6" PIN OAK, N OF THE N DRIVE ENTRANCE TO TARGET.
ELEV. = 1353.36 (NAVD 88)
- BM #102- RAILROAD SPIKE ON THE W FACE OF THE LIGHT POLE ON THE W SIDE OF MAIZE ROAD, THE SECOND LIGHT POLE N OF CENTRAL PARK STREET.
ELEV. = 1352.39 (NAVD 88)

	<table border="1"> <tr> <th>No.</th> <th>Revision</th> <th>By</th> <th>Date</th> </tr> <tr> <td> </td> <td> </td> <td> </td> <td> </td> </tr> </table>	No.	Revision	By	Date					<p align="center"> PRIVATE SANITARY SEWER EXTENSION TARGET OUTPARCEL PHASE V NEWMARKET SQUARE PPS KEY MAP AND GENERAL NOTES GARY JANZEN, P.E. - CITY ENGINEER PRIVATE PROJECT NO. 2190 PPS (607861) </p>
	No.	Revision	By	Date						
		<p align="center"> PEC PROFESSIONAL ENGINEERING CONSULTANTS, P.A. 303 SOUTH TOPEKA WICHITA, KS 67202 316-262-2691 www.pec1.com </p>								
Designed by JEH, MDK Drawn by CSL, JAN	Job No. 35-14059-000-6364 Date FEBRUARY 2014									
Sht. C4.2 of 10										

2-4" SERVICES
FROM MH 1 South
35.5' to 1st service
FROM MH 1 South
37.5' to 2nd service

FROM MH 2 North
190.5' to sta. 0
+37.5
FROM MH 2 North
192.5' to sta. 0
+35.5

both services are 5'
East of main & 4'
tall

N: 8,916.4378, E: 4,867.3466
Sta. 0+00.0 *
Construct MH 1
over existing 8" pipe and remove top
half of 8" pipe thru MH.
Standard MH.
Shape invert to provide smooth flow.

N: 8,916.3930, E: 4,881.4960
Existing SS MH
Abandon in place 241.5' Existing 8" SS Pipe (S) per
City of Wichita Specifications.
Construct 3" concrete plug in existing pipe (S).
Adjust manhole top elevation to the elevation provided
below. The contractor shall provide new adjustment
rings as necessary.
Exist. MH Rim Elev. = 1353.31
Prop. MH Rim Elev. = 1353.55
Difference in elevation = +0.24'

OLD EXISTING SS
MAIN LINE WAS
SAND FILLED
AND PLUGGED

CAUTION !!!
Proposed Rainleader
(Ref. Architectural Plans)

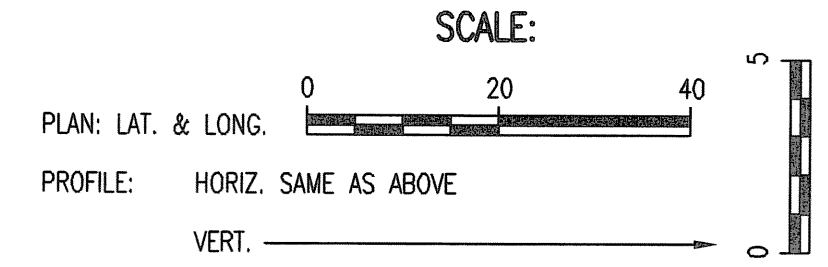
CAUTION !!!
Existing 15" RCP SWS
(to be removed)

N: 8,690.7972, E: 4,861.8025
Sta. 2+25.7 * 2+29.5
Const. MH 2
Standard MH

N: 8,682.2534, E: 4,875.6930
Sta. Sta. 2+42.0 * 2+40.5
Construct MH 3 over existing 8" pipe.
Remove top half of 8" pipe thru MH.
Standard MH.
Shape invert to provide smooth flow.
Construct 3" concrete plug in existing pipe (N).

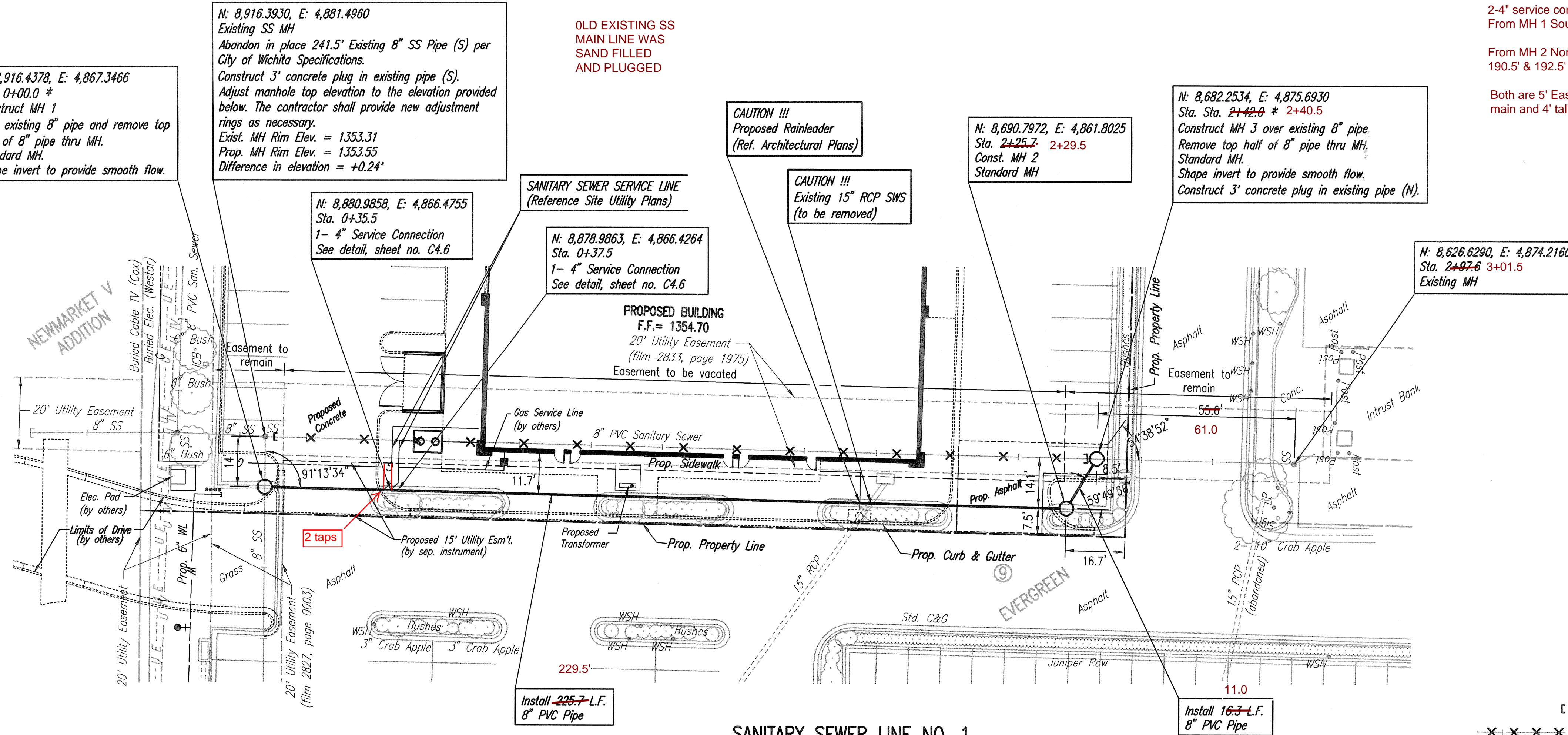
2-4" service connections
From MH 1 South 35.5' & 37.5'

From MH 2 North
190.5' & 192.5'
Both are 5' East of
main and 4' tall



PLAN	CHECKED	CHECKED
BY		
DATE		

PROFILE	CHECKED	CHECKED
BY		
DATE		



* PRIOR TO BEGINNING CONSTRUCTION, THE CONTRACTOR SHALL EXCAVATE THE EXISTING 8" PVC PIPE AT SANITARY SEWER STATION 0+00.0 AND STATION 2+42.0 TO VERIFY ITS HORIZONTAL AND VERTICAL LOCATION. THE PIPE LOCATION SHALL BE REPORTED TO THE ENGINEER SO THAT ANY NECESSARY PLAN MODIFICATIONS CAN BE MADE. ANY ADDITIONAL LABOR OR MATERIALS NECESSARY TO COMPLETE THE CONNECTION SHALL BE CONSIDERED SUBSIDIARY TO THE PROJECT.

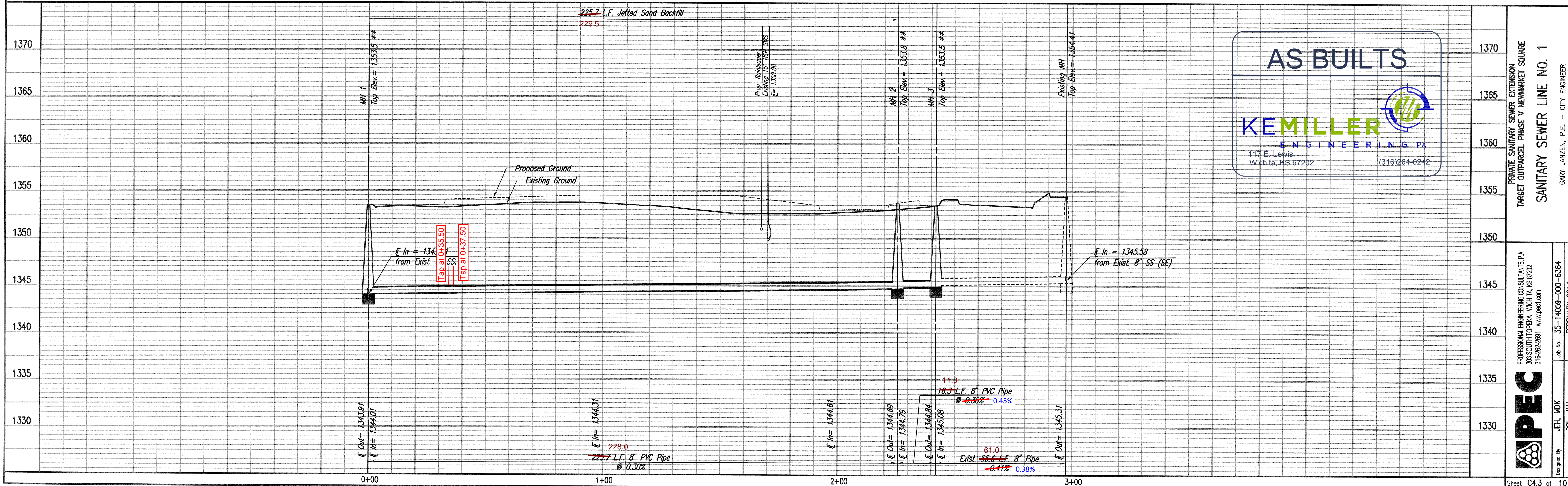
** MANHOLE TOP TO MATCH PROPOSED GROUND.

NOTE: CONTRACTOR SHALL MAINTAIN FULL TRAFFIC THRU ALL EXISTING DRIVES AT ALL TIMES DURING CONSTRUCTION.

□ = CAP OR MASONRY PLUG TO BE INSTALLED.
-X-X-X-X- = SANITARY SEWER TO BE ABANDONED IN PLACE.



SANITARY SEWER LINE NO. 1



AS BUILTS

KEMILLER ENGINEERING PA

117 E. Lewis,
Wichita, KS 67202 (316)264-0242

PRIVATE SANITARY SEWER EXTENSION
TARGET OUTPARCEL PHASE V NEWMARKET SQUARE
SANITARY SEWER LINE NO. 1
GARY JANZEN, P.E. - CITY ENGINEER
PRIVATE PROJECT NO. 2190 PPS (607861)

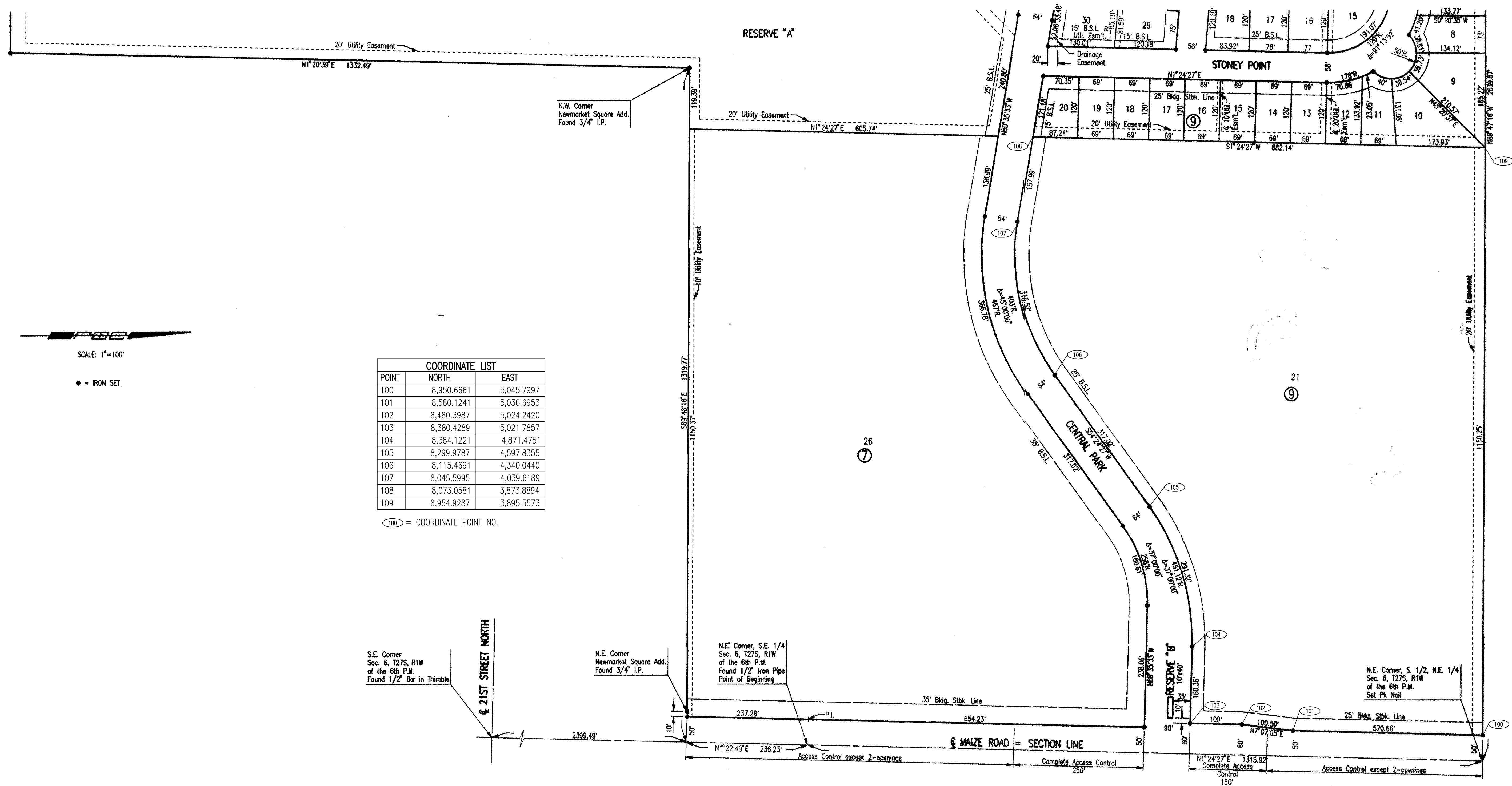
PECC

PROFESSIONAL ENGINEERING CONSULTANTS P.A.
303 SOUTH TOPEKA WICHITA, KS 67202
316-262-2881 www.pec.com

Designed By: JEH, MDK
Drawn By: CSL, JAN
Job No.: 35-14059-1000-6364
Date: FEBRUARY 2014

EVERGREEN

AN ADDITION TO WICHITA, SEDGWICK COUNTY, KANSAS



FOR INFORMATION ONLY

No.	Revision	By	Date
PRIVATE SANITARY SEWER EXTENSION TARGET OUTPARCEL PHASE V NEWMARKET SQUARE PLAT GARY JANZEN, P.E. - CITY ENGINEER PRIVATE PROJECT NO. 2190 PPS (607861)			
PROFESSIONAL ENGINEERING CONSULTANTS, P.A. 303 SOUTH TOPEKA WICHITA, KS 67202 316-262-2691 www.pec1.com			
Designed by	JEH, MDK	Job No.	35-14059-000-6364
Drawn by	CSL, JAN	Date	FEBRUARY 2014
			SH. C2.1 of 10