

# WATERLINE IMPROVEMENTS

## TO SERVE

# TARGET OUTPARCEL PHASE V NEWMARKET SQUARE

PRIVATE PROJECT NO. 1800 PPW (607853)

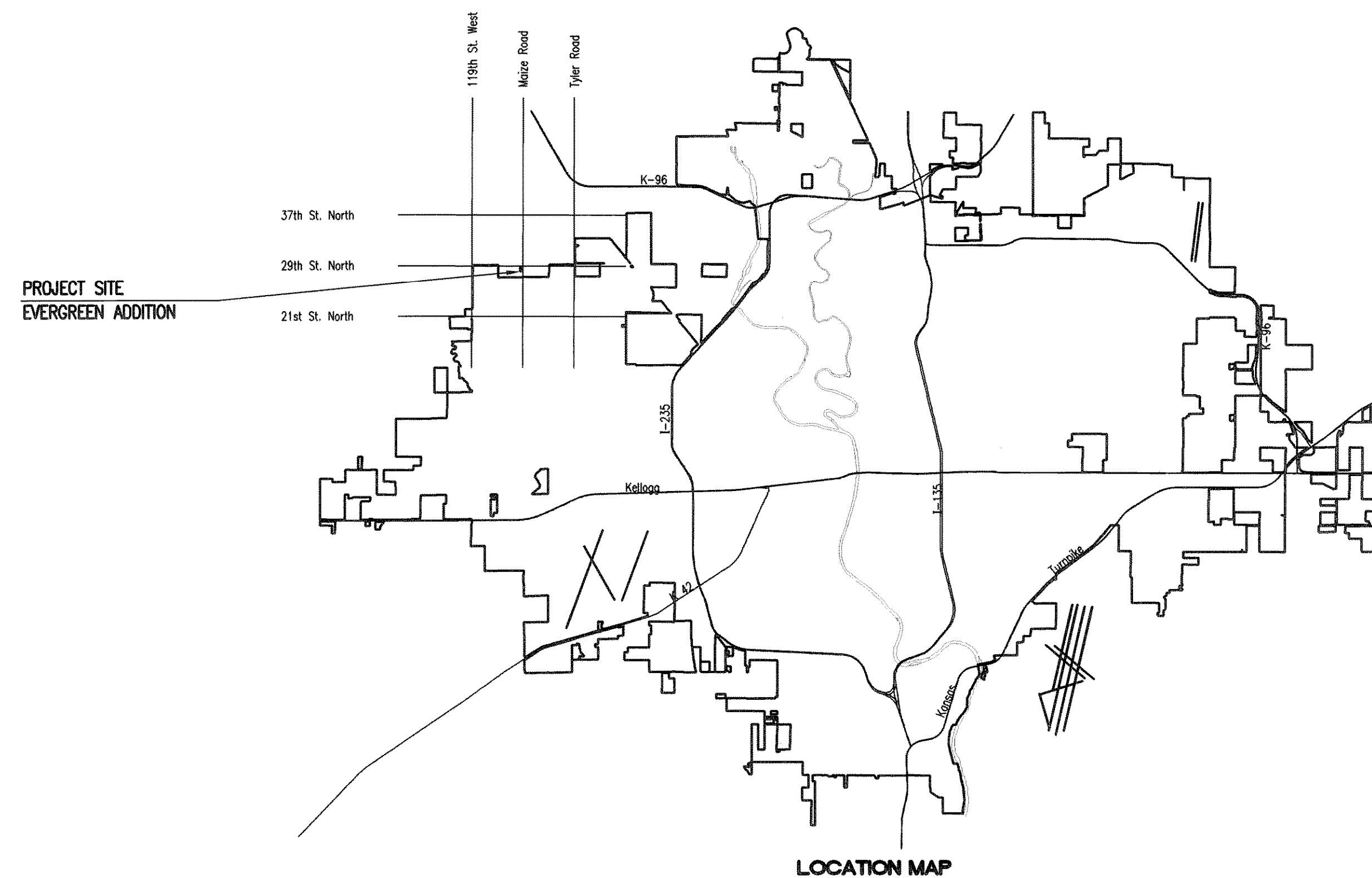
## CITY OF WICHITA, KANSAS

GARY JANZEN, P.E. - CITY ENGINEER

**DEVELOPER CONTACT**  
 MR. DAVID HAMBRICK  
 SLAWSON COMPANIES  
 727 N. WACO, SUITE 400  
 WICHITA, KANSAS 67203  
 (316) 263-3201

**INDEX OF SHEETS**

SHEET NO. C5.1	PPW TITLE SHEET
SHEET NO. C5.2	PPW KEY MAP AND GENERAL NOTES
SHEET NO. C5.3	WATERLINE NO. 1
SHEET NO. C5.4	STANDARD WATER ASSEMBLY DETAIL
SHEET NO. C5.5	MISCELLANEOUS WATER DETAILS
SHEET NO. C2.1	PLAT
SHEET NO. C6.1-C6.3	SOIL EROSION BMP DETAILS



AS BUILTS	
Contractor: McCullough Excavation, Inc.  5/27/2014	Project Inspector: Larry Gann   117 E. Lewis, Wichita, KS 67202 (316)264-0242

APPROVED AS NOTED  
 BY CITY ENGINEER OF WICHITA  
 & BY WICHITA FIRE DEPARTMENT

Water Mains (Engineering) Rebecca Drif 4/9/14

Water Mains (Water) Ang Jolley 4/9-14

Fire Prot. Line WNO 4-10-14

**NOTE TO CONTRACTORS**

**PUBLIC PROPERTY:**  
 Inspection and testing for the waterline is to be provided by a Licensed Consulting Engineering Firm under contract with the Owner/Developer. Said inspection to be in accordance with the City of Wichita standard construction engineering practices and certified by a Licensed Professional Engineer licensed in the State of Kansas. No work shall be performed in dedicated easements or public right-of-way by the Contractor without such inspection nor shall any work be commenced without written authorization by the City Engineer. All Construction and Materials shall comply with the City of Wichita Specifications and Standards (on file and available in the City Engineer's Office).

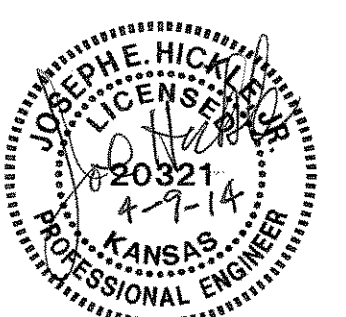
**PRIVATE PROPERTY:**  
 Installation and testing for the fire protection line is to be performed by a City of Wichita licensed fire protection contractor in accordance with the fire codes as adopted by the City of Wichita. All materials and construction practices for the fire protection line shall comply with the fire codes as adopted by the City of Wichita (available from the City of Wichita Fire Department). The Contractor shall not commence work without notification and approval of the Wichita Fire Department.  
 Inspection of the fire protection line is to be provided by the City of Wichita Fire Department and by a licensed Consulting Engineering Firm under contract with the Owner/Developer.  
 The contractor shall not start work until the project inspector is assigned to the project and present on the site. Any work done without inspection will be required to be uncovered for inspection.

APRIL 2014

PLANS PREPARED BY

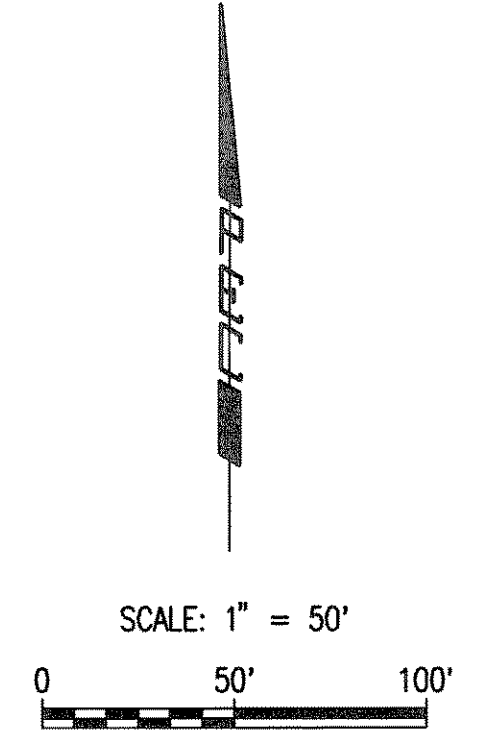
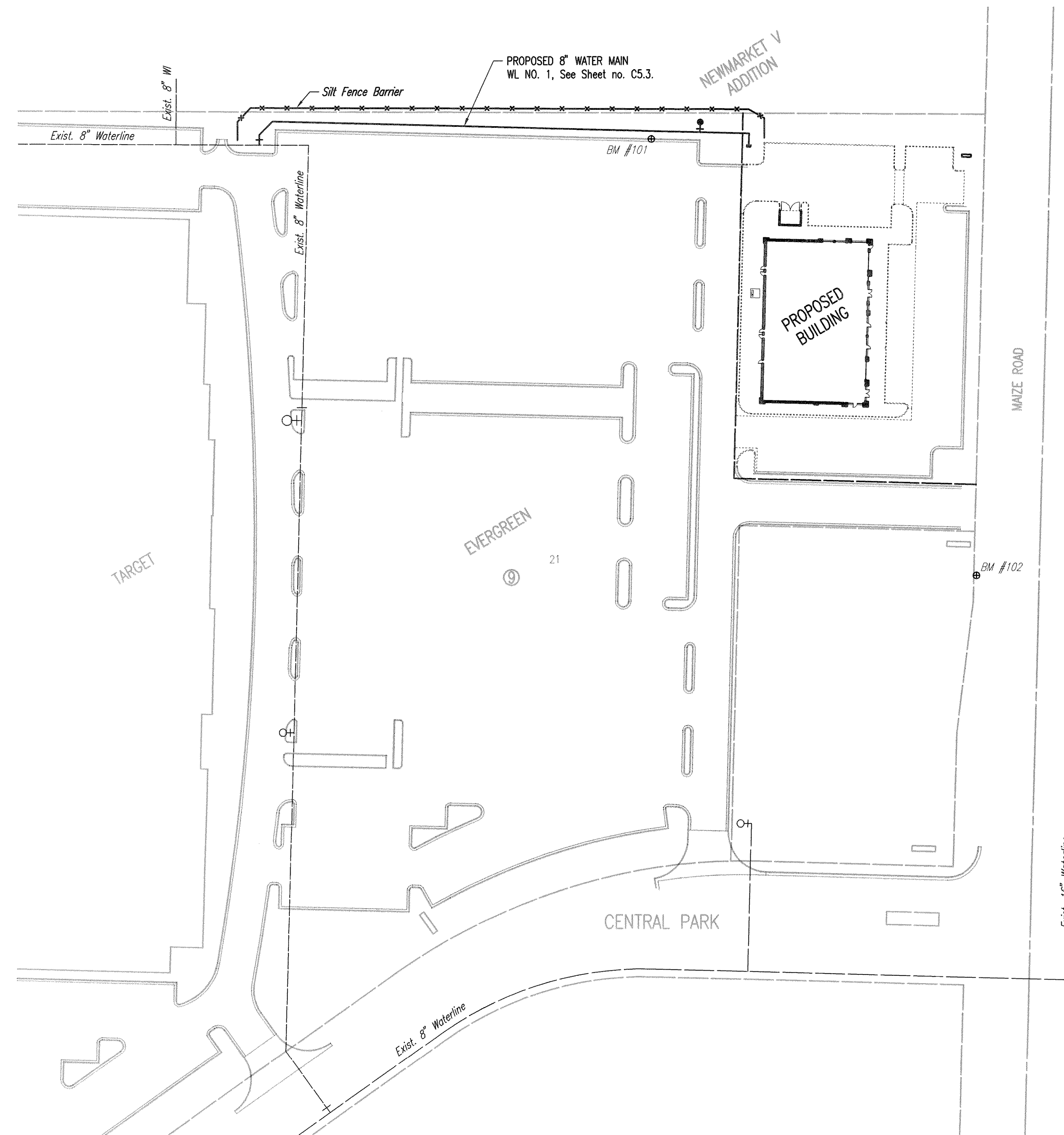
PROFESSIONAL ENGINEERING CONSULTANTS, P.A.

ENGINEERS  
 WICHITA, KANSAS



Saved 04-08-2014 3:52:32 PM by CSI  
 Plot Scale 1" = 10'-00" 2014 4:00:46 PM by CSI  
 C:\Users\CSICAD\Documents\1800\1800\Drawings\PPW\1800-000-PPW-C5.1-PPW.TITLE

Source: 04-08-2014 4:35:59 PM by: CSJ  
 Project: 14059-000-PPW-05.2-PPW KEY MAP AND GENERAL NOTES  
 User: csj@csj.com  
 Path: C:\Users\csj\AppData\Local\Temp\14059-000-PPW-05.2-PPW KEY MAP AND GENERAL NOTES



**LEGEND**

EXISTING WATER MAIN	—
PROPOSED WATER MAIN	—
EXISTING WATER VALVE	—
PROPOSED WATER VALVE	—
EXISTING FIRE HYDRANT	—
PROPOSED FIRE HYDRANT	—
SILT FENCE BARRIER	—

SEE SHEET NO. C2.1  
FOR PLAT COORDINATES

**BENCHMARK LIST**

- BM #101- "d" CUT ON THE TOP OF THE CURB AT THE NE CORNER OF TARGET PARKING LOT 30± W OF THE CURB INLET S OF THE 6' PIN OAK, N OF THE N DRIVE ENTRANCE TO TARGET.  
ELEV. = 1353.36 (NAVD 88)
- BM #102- RAILROAD SPIKE ON THE W FACE OF THE LIGHT POLE ON THE W SIDE OF MAIZE ROAD, THE SECOND LIGHT POLE N OF CENTRAL PARK STREET.  
ELEV. = 1352.39 (NAVD 88)

**GENERAL NOTES**

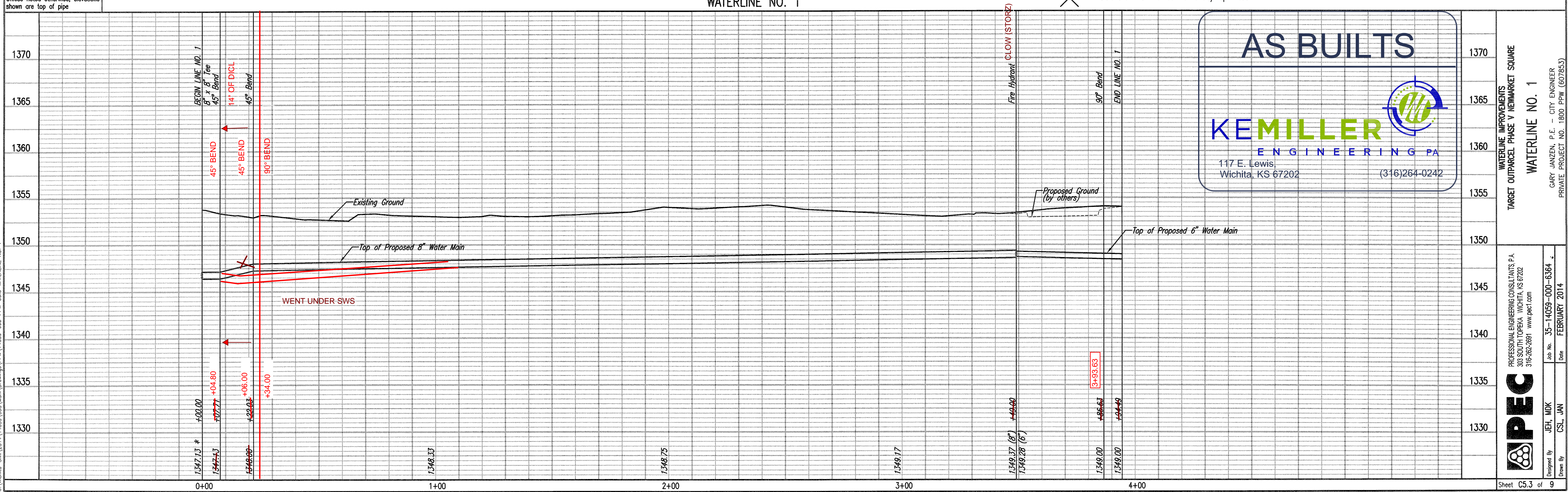
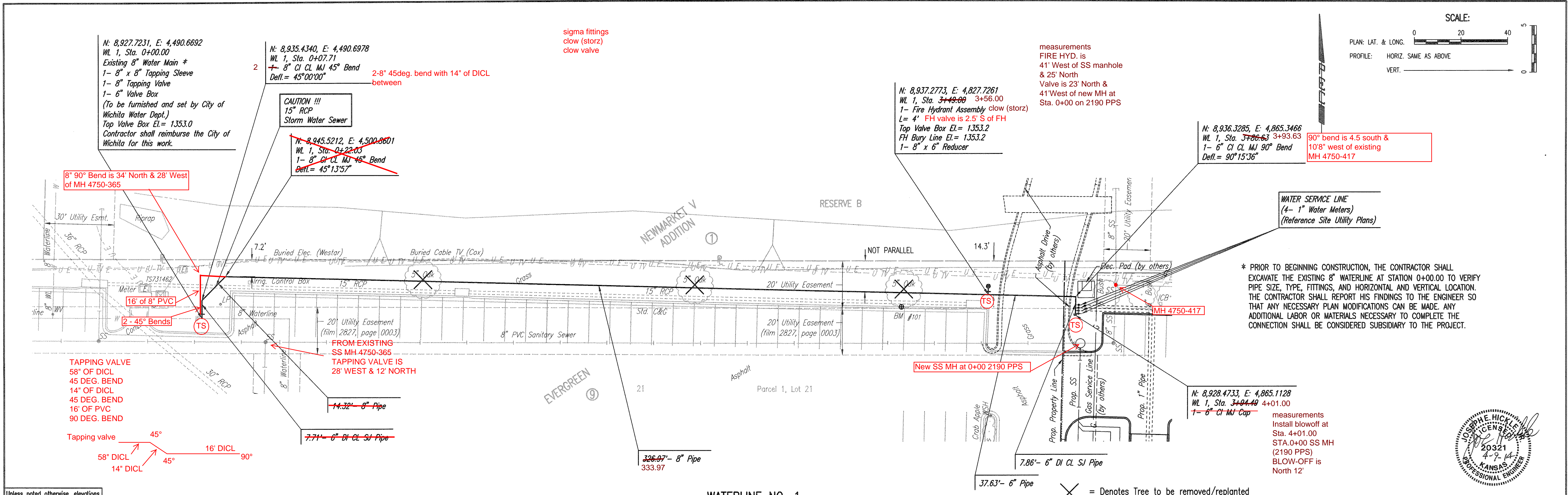
1. ALL ELEVATIONS SHOWN ARE NAVD 88 DATUM.
2. CONTRACTOR WILL BE REQUIRED TO PROVIDE A MINIMUM ADVANCE NOTICE OF SEVENTY-TWO (72) HOURS TO UTILITY COMPANIES PRIOR TO STARTING ANY EXCAVATION AS FOLLOWS:  
  
 KANSAS ONE-CALL 687-2470 or 811  
  
 THE CONTRACTOR MUST NOTIFY THE FOLLOWING IN CASE OF AN EMERGENCY:  
  
 EMERGENCY DISPATCH 911  
 COX COMMUNICATIONS 800-778-9140  
 KANSAS GAS SERVICE 888-482-4950  
 WESTAR ENERGY 800-363-1183  
 BLACK HILLS ENERGY 800-694-8989  
 AT&T 800-286-8313  
 WICHITA WATER UTILITIES (SS AND WL) 262-6000
3. ALL WATER MAINS AND APPURTENANCES SHALL BE INSTALLED IN ACCORDANCE WITH CITY OF WICHITA, KANSAS STANDARD SPECIFICATIONS.
4. THE WATER MAIN SHALL BE CONSTRUCTED ON THE ALIGNMENT SHOWN BY THE DRAWINGS. TREES AND SHRUBS IN PUBLIC RIGHT-OF-WAY WHICH ARE IN DIRECT CONFLICT WITH PROPOSED NEW CONSTRUCTION SHALL BE REMOVED BY THE CONTRACTOR WITH THE ENGINEER'S APPROVAL. TREES AND SHRUBS WHICH ARE NOT IN DIRECT CONFLICT WITH PROPOSED NEW CONSTRUCTION SHALL BE SAVED AND PROTECTED FROM DAMAGE.
5. OPENING AND CLOSING WATER VALVES SHALL BE DONE SLOWLY TO PREVENT DAMAGE TO THE WATER DISTRIBUTION SYSTEM FROM WATER HAMMER. ALL VALVES CLOSED BY THE CONTRACTOR MUST BE REOPENED AS NEW CONSTRUCTION PERMITS. PROJECT INSPECTOR MUST ASCERTAIN THAT ANY VALVE CLOSED BY THE CONTRACTOR IS REOPENED. CONTRACTOR WILL BE PERMITTED TO OPERATE WATER VALVES ONLY WHEN THE PROJECT INSPECTOR ASSIGNED TO THE PROJECT IS PRESENT.
6. THE CONTRACTOR SHALL NOT START WORK ON THE PROJECT UNTIL THE PROJECT INSPECTOR IS ASSIGNED TO THE PROJECT AND IS PRESENT ON THE SITE. ANY WORK DONE WITHOUT INSPECTION WILL BE REQUIRED TO BE UNCOVERED FOR INSPECTION.
7. THE CONTRACTOR SHALL GIVE ALL PROPERTY OWNERS AND/OR TENANTS OF DEVELOPED PROPERTY DIRECTLY ADJUTING THE CONSTRUCTION OF THIS PROJECT A MINIMUM OF TEN (10) DAYS ADVANCE NOTICE PRIOR TO START OF CONSTRUCTION.
8. THE CONTRACTOR SHALL BE RESPONSIBLE FOR PRESERVING PROPERTY IRONS. THE CONTRACTOR SHALL BE REQUIRED TO RE-ESTABLISH ANY PROPERTY IRONS WHICH ARE DAMAGED OR DESTROYED BY HIS CONSTRUCTION OPERATIONS. SUCH IRONS SHALL BE RE-ESTABLISHED BY A LICENSED LAND SURVEYOR IN ACCORDANCE WITH STATE LAWS.
9. THE CONTRACTOR SHALL RESTORE ALL DITCHES, SWALES, ROAD SHOULDERS, ENTRANCES, AND BANKLINES TO THEIR ORIGINAL SLOPES AND GRADES EXCEPT AS SHOWN OTHERWISE.
10. INTERURBAN TRAFFIC GENERATED OUTSIDE THE PROJECT AREA AND LOCAL BUSINESS OR RESIDENTIAL TRAFFIC GENERATED WITHIN THE PROJECT AREA ARE TO BE CARRIED THROUGH CONSTRUCTION AS FURTHER PROMULGATED BY PROJECT SPECIAL PROVISIONS. THE CONTRACTOR SHALL UTILIZE BARRICADES, SIGNS, GUARDS, AND FLAGMEN IN ACCORDANCE WITH THE MANUAL ON UNIFORM TRAFFIC CONTROL DEVICES.
11. RUBBLE FROM THE REMOVAL OF MISCELLANEOUS STRUCTURES INCLUDING ANY TREES REMOVED AND TREE TRIMMINGS AND EXCESS EXCAVATED MATERIAL SHALL BE DISPOSED OF ON SITES PROVIDED BY THE CONTRACTOR. THESE SITES SHALL ALSO BE APPROVED OF BY THE ENGINEER AS TO SUITABILITY, APPEARANCE, AND SITE LOCATION. LOCATIONS THAT, IN THE OPINION OF THE ENGINEER, LEAVE AN UNSIGHTLY APPEARANCE WILL NOT BE APPROVED. ALL DISPOSAL SITES MUST BE APPROVED BY THE KANSAS DEPARTMENT OF HEALTH AND ENVIRONMENT. MATERIAL EITHER STOCKPILED OR DISPOSED OF IN A FLOOD PLAIN WILL REQUIRE A KANSAS STATE BOARD OF AGRICULTURE PERMIT. ANY MATERIAL DUMPED IN WATERS OF THE UNITED STATES OR WETLANDS IS SUBJECT TO U.S. CORPS OF ENGINEERS PERMITTING REGULATIONS. ANY MATERIAL BURIED OR STOCKPILED BEYOND APPROVED CONSTRUCTION LIMITS MAY REQUIRE ARCHAEOLOGICAL INVESTIGATIONS UNLESS BURIED IN A PREVIOUSLY APPROVED DISPOSAL LOCATION.
12. ALL APPROVED EXCESS EXCAVATION WHICH IS TO BE WASTED SHALL BE STOCKPILED AS DIRECTED BY THE ENGINEER AT NO ADDITIONAL COST TO THE OWNER. STOCKPILE LOCATIONS SHALL BE AS DIRECTED BY THE OWNER AND IN ACCORDANCE WITH GENERAL NOTE NO. 11 ABOVE.
13. ALL LAWN/TURF AREAS DISTURBED BY CONSTRUCTION OF THE PROPOSED IMPROVEMENTS SHALL BE RESTORED WITH THE SAME GRASS/SOD AS EXISTING. RESTORATION OF DISTURBED AREAS SHALL INCLUDE, BUT NOT BE LIMITED TO, TOP SOIL PREPARATION, SEEDING, MULCH, AND/OR RESEEDING. ALL SEEDING/SODDING WORK SHALL BE IN ACCORDANCE WITH THE CITY OF WICHITA STANDARD SPECIFICATIONS AND THE CITY OF WICHITA ADMINISTRATIVE REGULATION NO. AR6.5 WHICH GOVERNS CLEANUP AND RESTORATION OR REPLACEMENT FOLLOWING CONSTRUCTION.
14. THE CONTRACTOR SHALL SEED ALL AREAS DISTURBED BY CONSTRUCTION ACTIVITIES WITH TEMPORARY RYE GRASS. RYE GRASS SEED SHALL BE PLANTED AT A MINIMUM RATE OF SIX (6) POUNDS PER ONE THOUSAND (1,000) SQUARE FEET. THIS TEMPORARY SEEDING MAY BE OMITTED ONLY IF OTHER SEEDING IS REQUIRED IN ACCORDANCE WITH GENERAL NOTE NO. 13 ABOVE. TEMPORARY SEEDING OR PERMANENT SEEDING/SODDING SHALL BE APPLIED WITHIN 14 DAYS AFTER THE AREA HAS BEEN DISTURBED.
15. EACH BIDDER SHALL VISIT THE SITE OF THE PROJECT BEFORE SUBMITTING THE PROPOSAL FOR THIS WORK SO THAT HE WILL BE FULLY INFORMED OF THE EXISTING FIELD CONDITIONS AND THE OBSTACLES WHICH MIGHT BE ENCOUNTERED. UPON AWARD OF THE CONTRACT THE CONTRACTOR WILL NOT BE GRANTED ANY ADDITIONAL COMPENSATION WITH REGARDS TO TIME AND MONEY FOR CONDITIONS THAT MAY HAVE BEEN EVALUATED DURING ANY INSPECTION OF THE SITE.
16. THE CONTRACTOR SHALL INSTALL AND/OR MAINTAIN EROSION CONTROL METHODS AS SPECIFIED. THE GENERAL LOCATION OF THE REQUIRED EROSION CONTROL IS ILLUSTRATED ON THE KEY MAP. THE GENERAL CONTRACTOR SHALL BE RESPONSIBLE FOR MAINTAINING THE EROSION CONTROL SHOWN THROUGH THE COMPLETION OF THIS PROJECT. INSTALLATION OF THESE BMP'S DOES NOT RELIEVE THE CONTRACTOR OF THE RESPONSIBILITY OF ABATING SOIL EROSION.

	Revision		By	Date
	WATERLINE IMPROVEMENTS TARGET OUTPARCEL PHASE V NEWMARKET SQUARE <b>PPW KEY MAP AND GENERAL NOTES</b> GARY JANZEN, P.E. - CITY ENGINEER PRIVATE PROJECT NO. 1800 PPW (607853)			
		PROFESSIONAL ENGINEERING CONSULTANTS, P.A. 303 SOUTH TOPEKA WICHITA, KS 67202 316-262-2691 www.pec1.com		
Designed by	JEH, MDK	Job No.	35-14059-000-6364	Sht. C5.2 of 9
Drawn by	CSL, JAN	Date	FEBRUARY 2014	

PLAN  
 CHECKED  
 CHECKED

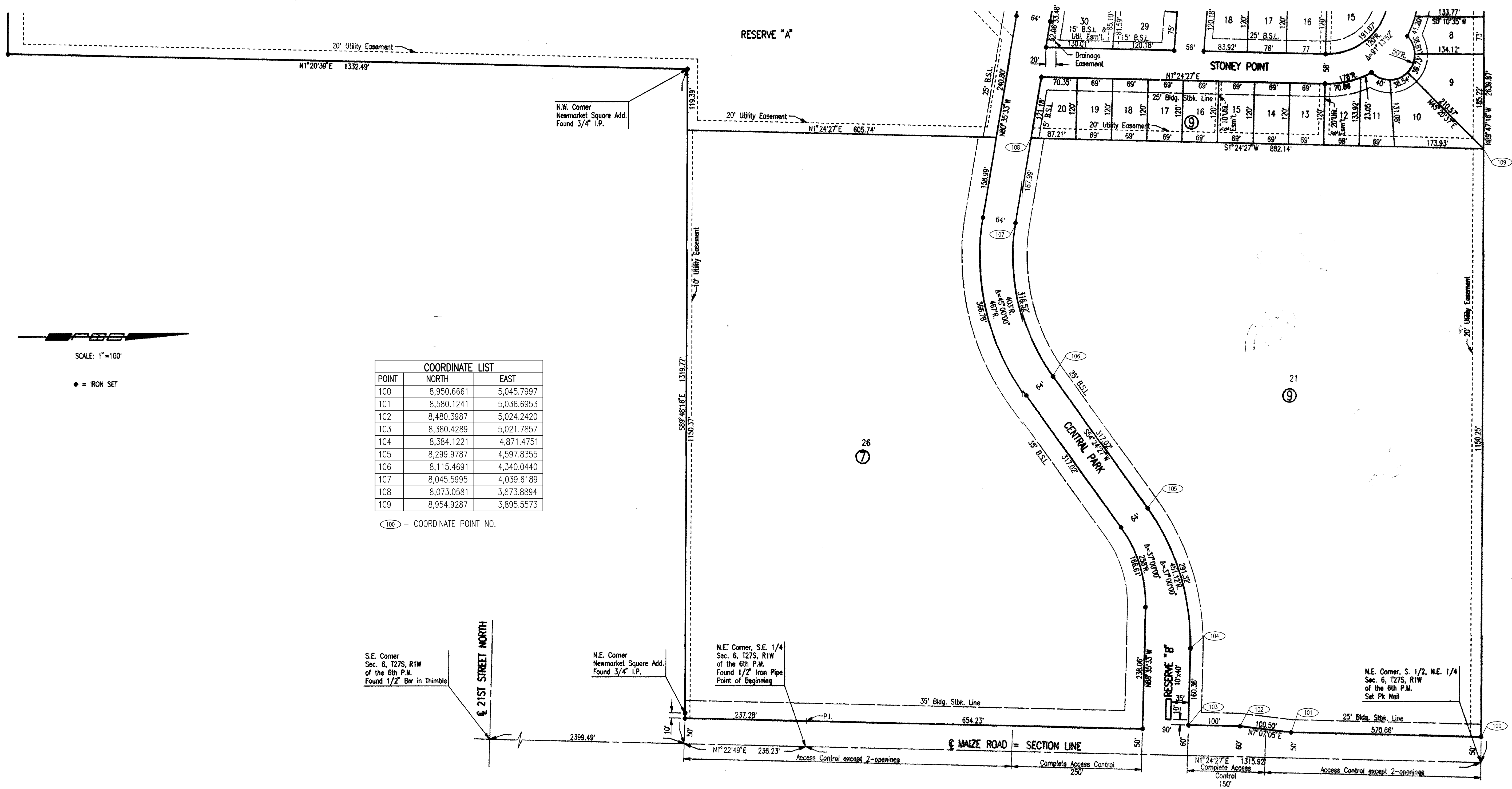
PROFILE  
 CHECKED  
 CHECKED

Saved 04-08-2014 5:08:22 PM by CSL  
 Plot Scale 1:1 04-08-2014 5:08:35 PM by CSL  
 U:\Wichita-Cov\2014\14059\000\Drawings\PPW\14059-000-PPW-CSJ-WATERLINE NO. 1



# EVERGREEN

AN ADDITION TO WICHITA, SEDGWICK COUNTY, KANSAS



SCALE: 1"=100'

● = IRON SET

POINT	NORTH	EAST
100	8,950.6661	5,045.7997
101	8,580.1241	5,036.6953
102	8,480.3987	5,024.2420
103	8,380.4289	5,021.7857
104	8,384.1221	4,871.4751
105	8,299.9787	4,597.8355
106	8,115.4691	4,340.0440
107	8,045.5995	4,039.6189
108	8,073.0581	3,873.8894
109	8,954.9287	3,895.5573

100 = COORDINATE POINT NO.

FOR INFORMATION ONLY

Sowed 03-13-2014 8:33:50 AM By: CSL  
 Plot Scale 1:1 04-09-2014 11:45:06 AM by: KURTIS DEKAT  
 U:\Wichita-Civil\2014\14059\000\Drawings\PPW\14059-000-PPW-C2.1-PLAT

No.	Revision	By	Date
WATERLINE IMPROVEMENTS TARGET OUTPARCEL PHASE V NEWMARKET SQUARE <b>PLAT</b> GARY JANZEN, P.E. - CITY ENGINEER PRIVATE PROJECT NO. 1800 PPW (607853)			
PROFESSIONAL ENGINEERING CONSULTANTS, P.A. 303 SOUTH TOPEKA WICHITA, KS 67202 316-262-2691 www.pec1.com			
Designed by	JEH, MDK	Job No.	35-14059-000-6364
Drawn by	CSL, JAN	Date	FEBRUARY 2014
			SH. C2.1 of 9