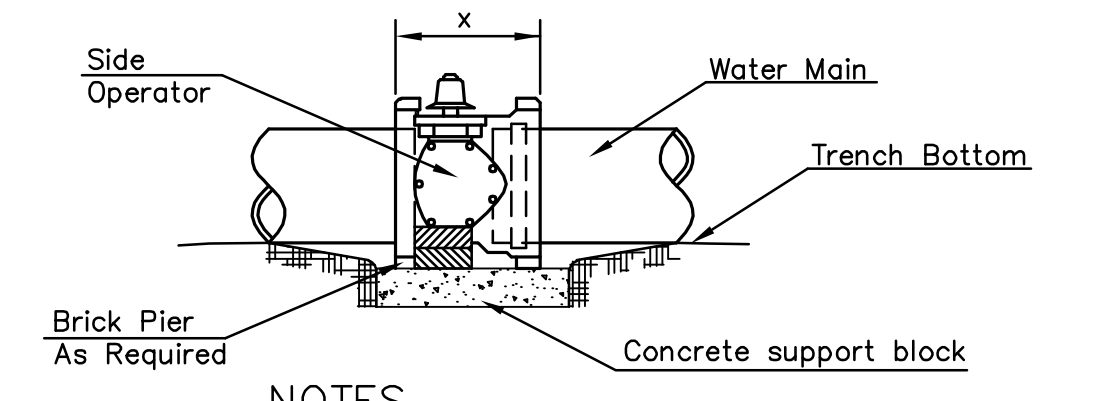


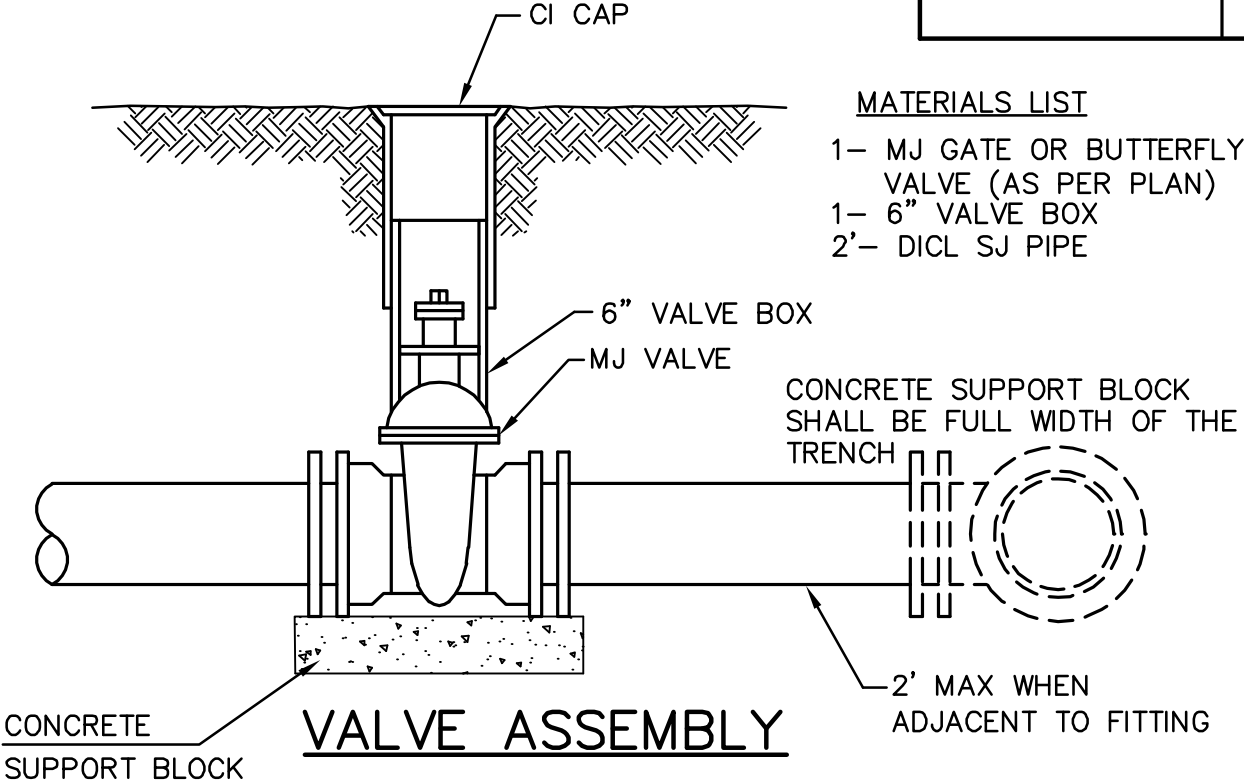
- MATERIALS LIST**
- 1- MJ ANCHOR TEE OR TANGENTIAL OUTLET (6" x 6")
  - 1- 6" MJ GATE VALVE
  - 1- 6" VALVE BOX AND VALVE STEM EXTENSION IF REQUIRED \*
  - 6" DI CL SJ PIPE (LENGTH VARIABLE)
  - 1- FIRE HYDRANT
  - 1- 6" ANCHOR COUPLING\*
  - 2- 90° BENDS\*
  - 6" DI CL PIPE WITH ADEQUATE JOINT RESTRAINT \*
  - CONCRETE BLOCKING (AS REQUIRED)
  - RIVER WASHED PEA GRAVEL (AS REQUIRED)

| FIRE HYDRANTS REQUIRED |                     |                       |                             |                                |
|------------------------|---------------------|-----------------------|-----------------------------|--------------------------------|
| STATION                | BURY LINE ELEVATION | TOP OF PIPE ELEVATION | FIRE HYDRANT BURY REQUIRED* | VALVE STEM EXT. REQUIRED (ft)* |
| STA. 10+10.00          | 1379.10             | 1374.77               | 5.0'                        | 1.0'                           |
|                        |                     |                       |                             |                                |
|                        |                     |                       |                             |                                |
|                        |                     |                       |                             |                                |
|                        |                     |                       |                             |                                |
|                        |                     |                       |                             |                                |
|                        |                     |                       |                             |                                |
|                        |                     |                       |                             |                                |
|                        |                     |                       |                             |                                |

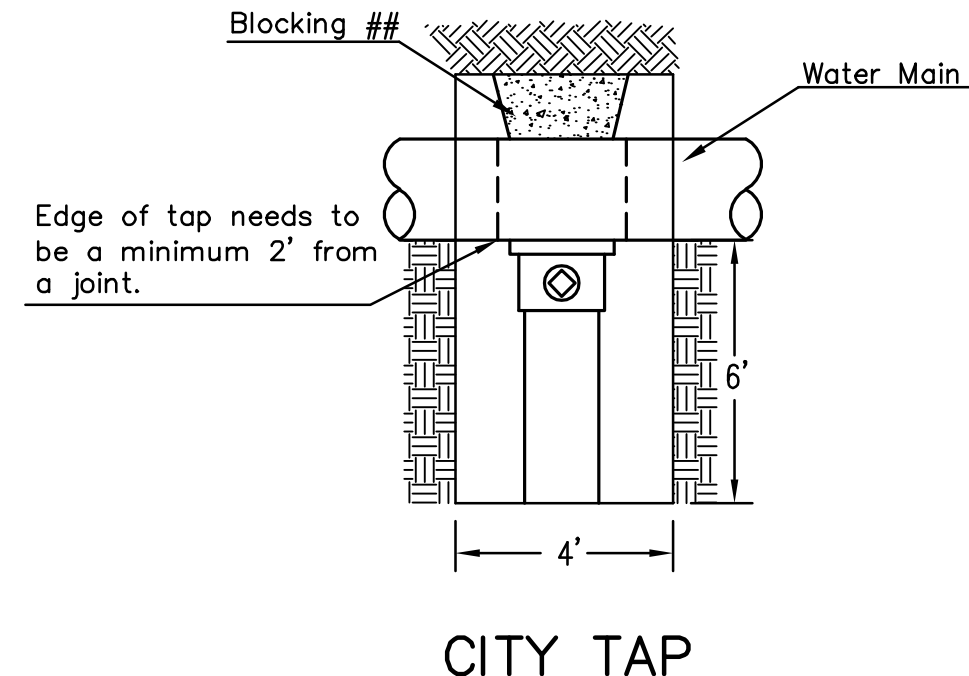


- NOTES**
- This detail covers Butterfly Valve installation, inclusive, regardless of type of pipe or joint used. 24" and larger lines to be detailed on plans.
  - 6" Valve Box and Cover required per City of Wichita Std. Specifications.
  - Conc. Support Block to be full width of trench.

**CONCRETE SUPPORT BLOCKING FOR BUTTERFLY VALVE INSTALLATION**

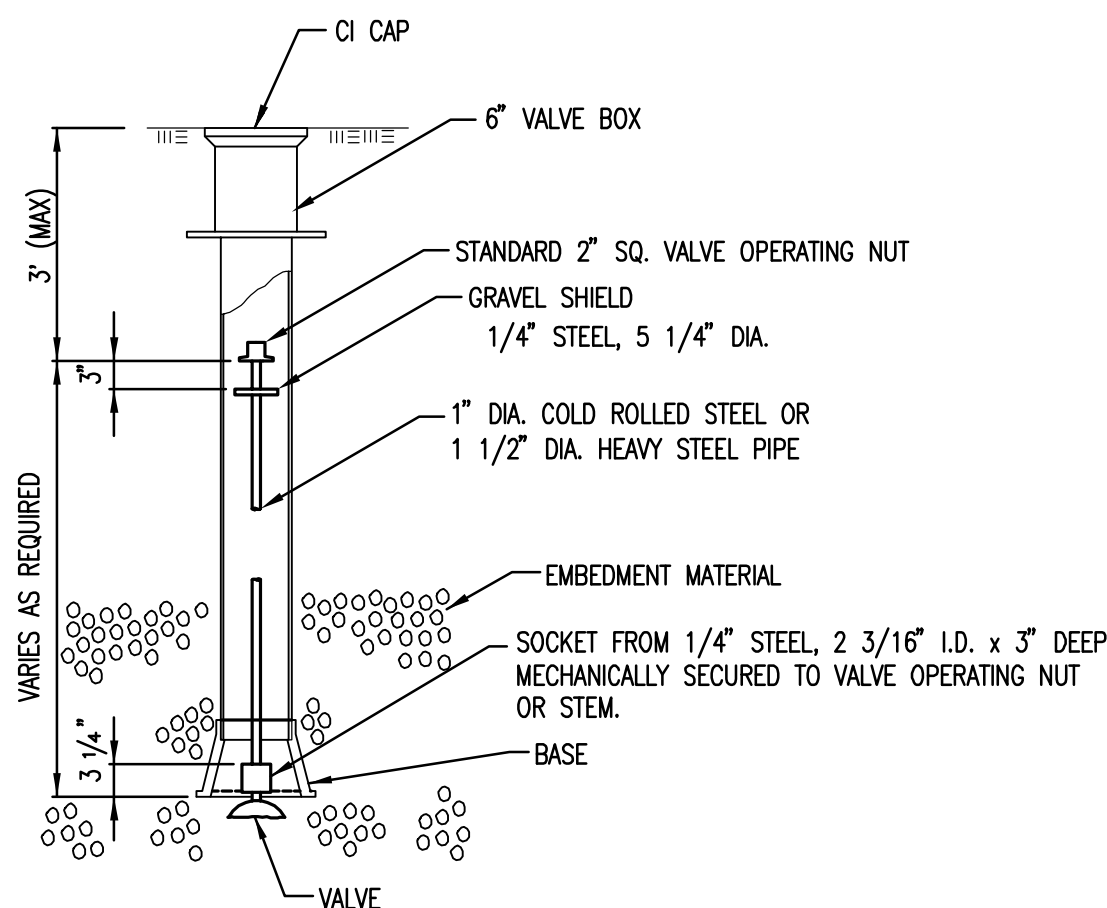


- MATERIALS LIST**
- 1- MJ GATE OR BUTTERFLY VALVE (AS PER PLAN)
  - 1- 6" VALVE BOX
  - 2- DI CL SJ PIPE



**CITY TAP**

## When the City of Wichita makes tap, blocking is to be done by Contractor



**VALVE STEM EXTENSION DETAIL**

NOTE: ONE VALVE STEM EXTENSION FOR EACH VALVE BURED GREATER THAN 5'.

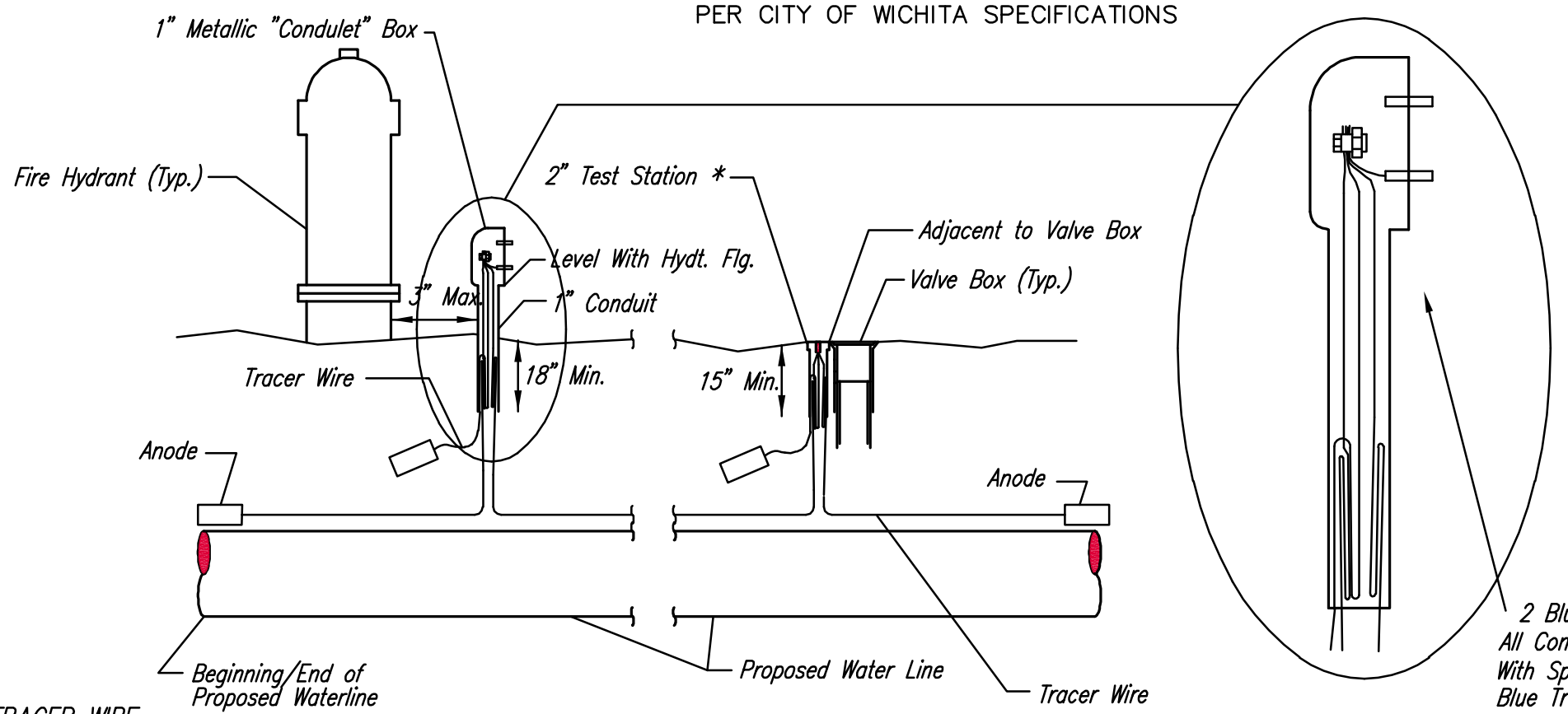
- \* IF THE REQUIRED HYDRANT BURY IS IN EXCESS OF 5', BUT LESS THAN 7', CONTRACTOR SHALL USE STANDARD 5' HYDRANT BURY AND HYDRANT BARREL EXTENSIONS AS NECESSARY. IF THE REQUIRED HYDRANT BURY IS GREATER THAN 7', CONTRACTOR SHALL USE 5' HYDRANT BURY, 2-MJ 90° BENDS, 6" ANCHOR COUPLING AND 6" DI CL PIPE AS NECESSARY FOR VERTICAL ADJUSTMENT. THE CONTRACTOR SHALL PROVIDE ADEQUATE THRUST BLOCKING AT HYDRANT AND MEAGALUGS, OR SIMILAR RESTRAINT BETWEEN 90° BENDS TO SECURE ALL FITTINGS DURING TESTING AND OPERATION. THE CONTRACTOR SHALL PROVIDE A VALVE STEM EXTENSION PER DETAIL THIS SHEET.

- \*\* CAUTION: WEEP HOLES TO BE KEPT CLEAR DURING CONSTRUCTION AND BACKFILL. CONCRETE FOR THRUST BLOCKING SHALL NOT OBSTRUCT WEEP HOLES. PLACE 1 CUBIC FOOT OF RIVER WASHED PEA GRAVEL AROUND EACH WEEP HOLE.

- # CONCRETE THRUST BLOCKING SHALL BE KEPT CLEAR OF BOLTS, NUTS, AND MJ ACCESSORIES.

**FIRE HYDRANT ASSEMBLY**

PER CITY OF WICHITA SPECIFICATIONS



\* FLUSH STYLE TEST STATIONS SHALL ONLY BE USED IN PAVEMENT.

**TRACER WIRE**  
Conductive type pipe locator/tracer wire shall be installed to locate all waterline pipe regardless of pipe material. The wire shall extend the entire length of the proposed pipe. The wire shall be taped to the waterline and pulled with the pipe. Split-bolt connectors shall be used at splice locations. Electrical tape shall cover all splices so no bare wire is exposed. Test stations shall be installed adjacent to all fire hydrants along the waterline and at blowoffs or valves near the ends of the waterlines. Any exceptions to the location of test stations shall be approved by the engineer. At each test station, the tracer wire shall be connected to a 3 lb. zinc or magnesium anode. Anodes shall also be attached to the tracer wire at both the beginning and the end of the proposed waterline. A typical layout of the tracer wire and test station is provided in the above figure.

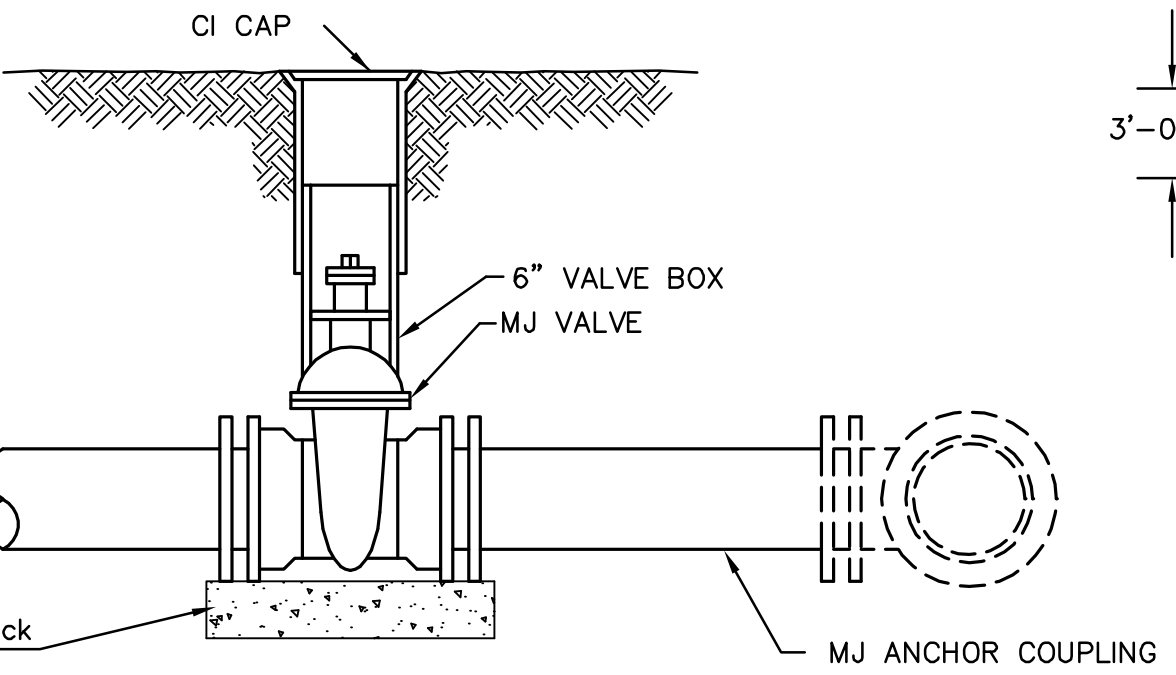
**WIRE**  
The tracer wire shall be Blue No. 12 THHN annealed soft copper wire with thermal plastic insulation or Blue No. 12 AWG CCS with 30 mil HDPE insulation. The insulation shall be heat, oil, and gasoline resistant as manufactured by Temple Electric or approved equal. To allow for grade adjustment, a minimum of 12" of excess wire shall be coiled at the bottom of the test station for all wires. The insulation sheathing shall be removed such that 1" bare copper wire at all points of connection. Contractor shall attach wire being installed with proposed water main to any tracer wire installed with adjacent waterline projects.

**TEST STATIONS**  
The test station for fire hydrant applications shall be a 1 inch galvanized "conduit" style test station as manufactured by AGRA Industries with a removable solid cover having two leads extending from the face or approved equal. The test station for valve applications shall be 2 inch flush style test station T2PS3B as manufactured by HANDLEY Industries or approved equal. The "conduit" style test station shall be attached to a 1 inch rigid galvanized conduit with a minimum length of 36" and plastic end bushing. The flush style shall have the word "WATER" stamped or molded into the lid. All test stations shall be manufactured using molded blue tops or sufficiently coated with blue enamel paint. The tracer wire and the anode wire shall be installed to allow 10 inches of wire within the test station. In concrete environments such as sidewalks or in the downtown area the contractor shall use the flush style test station. The location of all test stations shall be approved by the engineer, recorded, and shown in the as-built drawings.

**ANODES**  
The anodes shall be 3 lb. bare zinc or magnesium. The anodes shall be buried at the same elevation as the waterline at each test station. The anodes shall be connected to Black No. 12 THHN annealed soft copper wire which shall be extended to the test station.

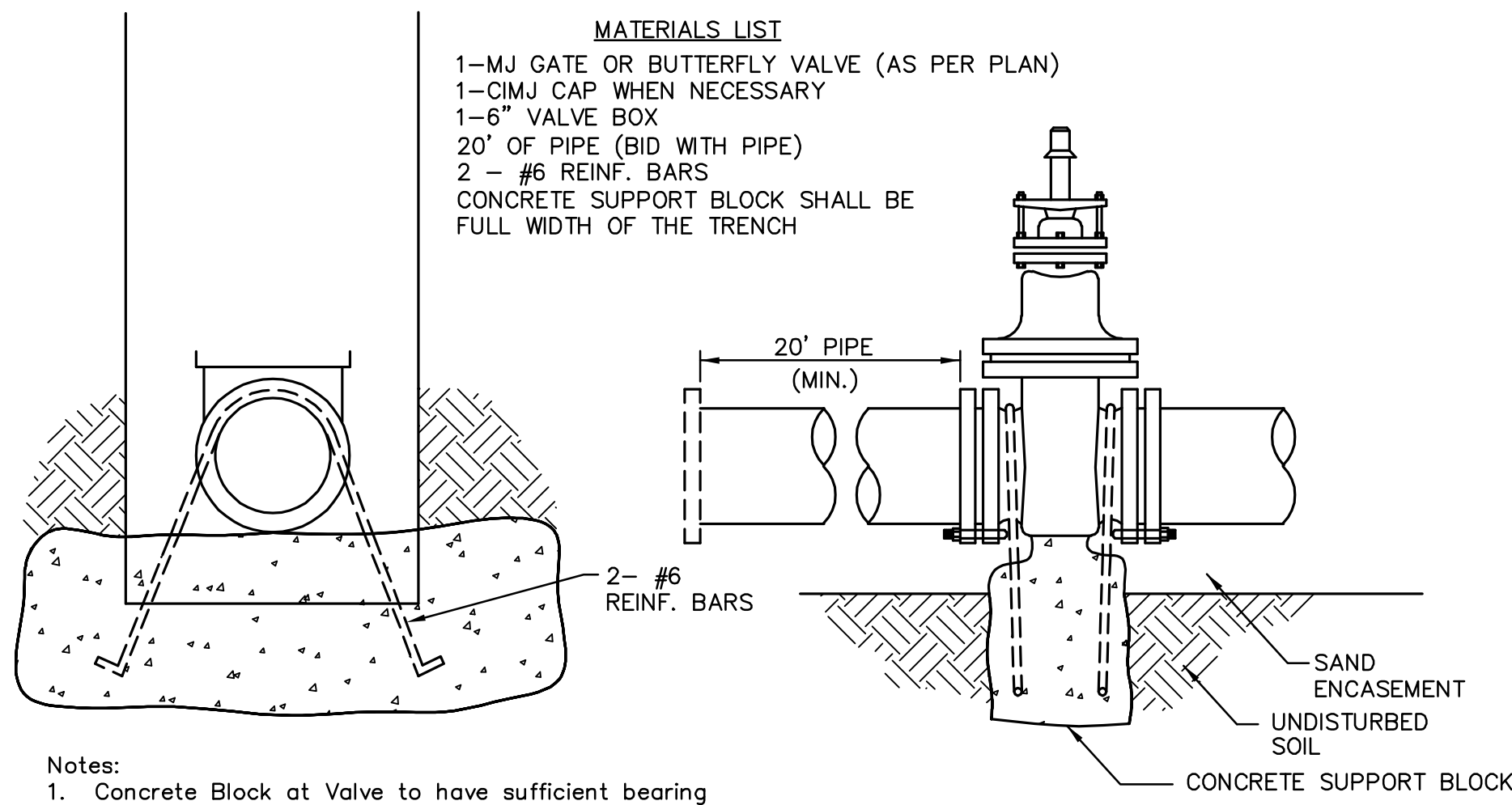
**TRACER WIRE DETAIL**

COST IS SUBSIDIARY TO PIPE INSTALLATION



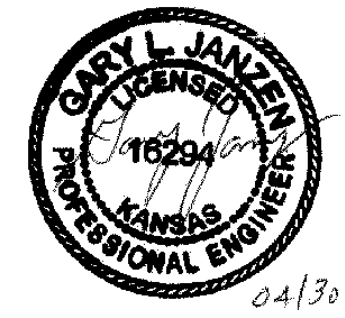
**ANCHORED VALVE ASSEMBLY**

- MATERIALS LIST**
- 1- MJ GATE OR BUTTERFLY VALVE (AS PER PLAN)
  - 1- CIMJ CAP WHEN NECESSARY
  - 1- 6" VALVE BOX
  - 20' OF PIPE (BID WITH PIPE)
  - 2 - #6 REINF. BARS
  - CONCRETE SUPPORT BLOCK SHALL BE FULL WIDTH OF THE TRENCH

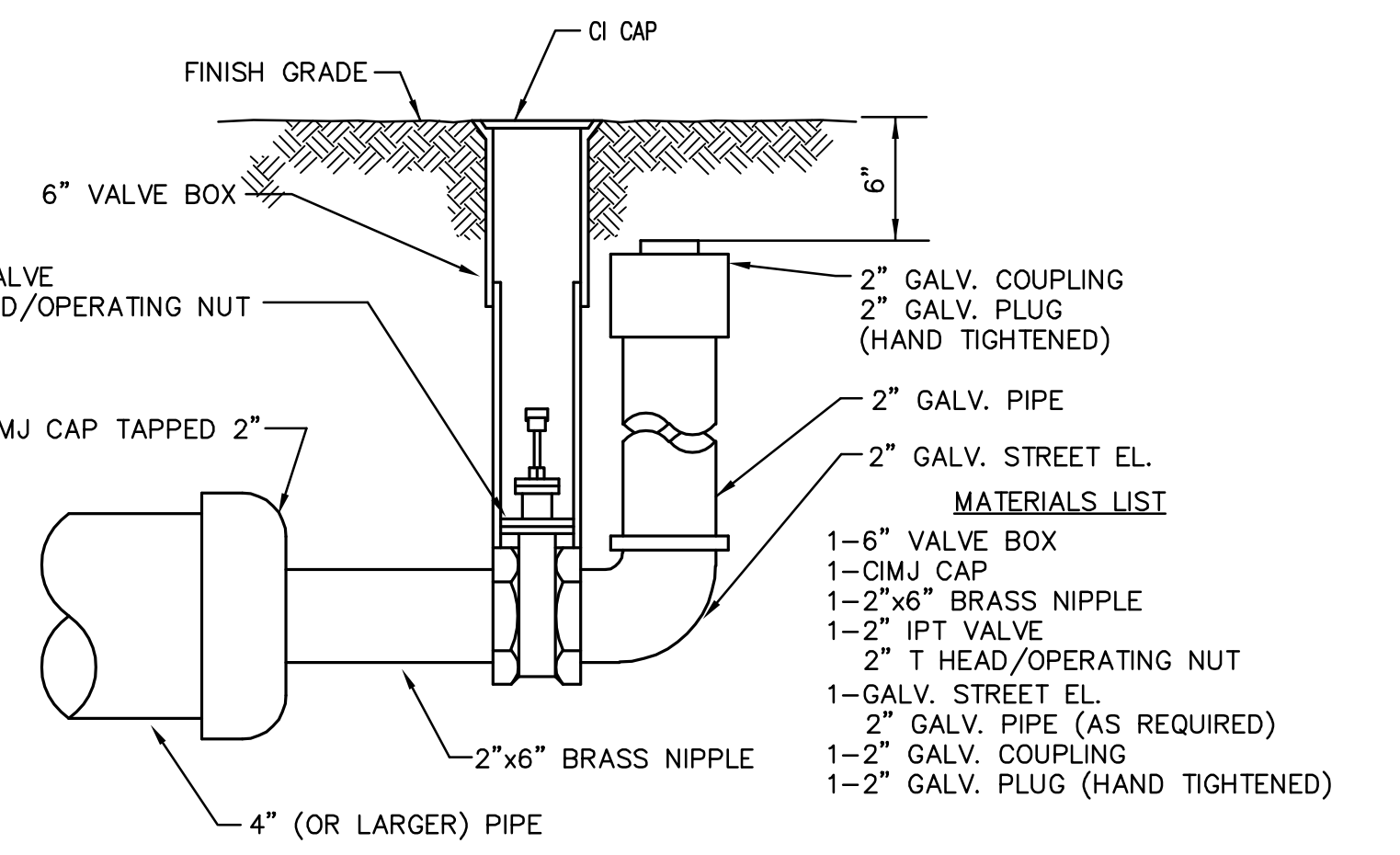


- NOTES:**
- Concrete Block at Valve to have sufficient bearing in undisturbed soil to prevent thrust movement as shown in table at right. Field Engineer to determine thrust loading of undisturbed soil and final size of thrust block.
  - The thrust block shall be constructed such that bolts, nuts, and other MJ accessories are kept clear of concrete.
  - All valves at dead ends and at other locations as called out on the plans shall be blocked as shown here.

| THRUST AT VALVES |                     |
|------------------|---------------------|
| VALVE            | THRUST AT 150 #/sq2 |
| 4"               | 1809 lbs.           |
| 6"               | 4245 lbs.           |
| 8"               | 7540 lbs.           |
| 12"              | 16965 lbs.          |



**ANCHORED VALVE ASSEMBLY, SPECIAL**



**2" BLOWOFF ASSEMBLY**

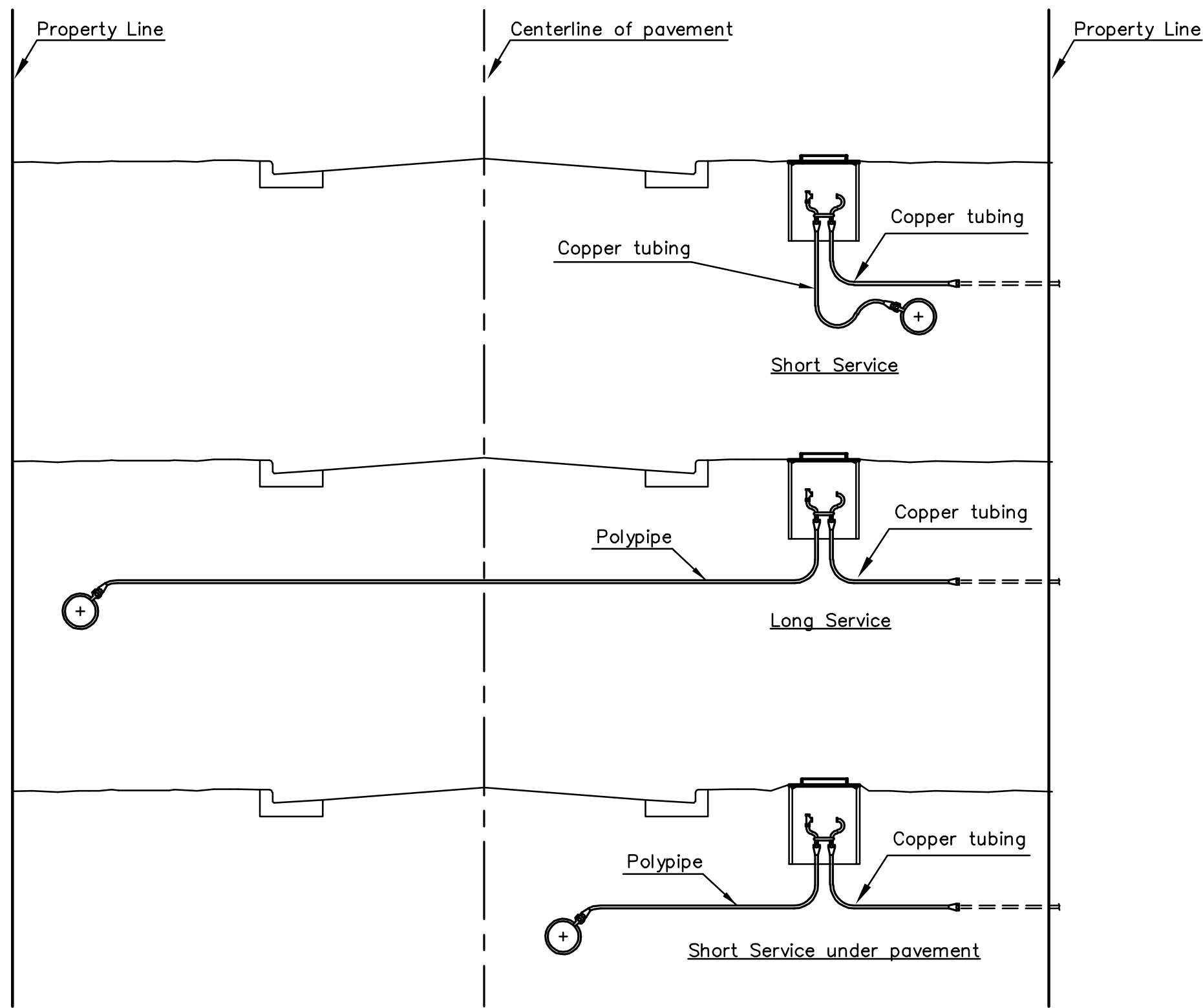
**STANDARD WATER ASSEMBLY DETAIL**

CITY ENGINEER  
**GARY JANZEN, P.E.**

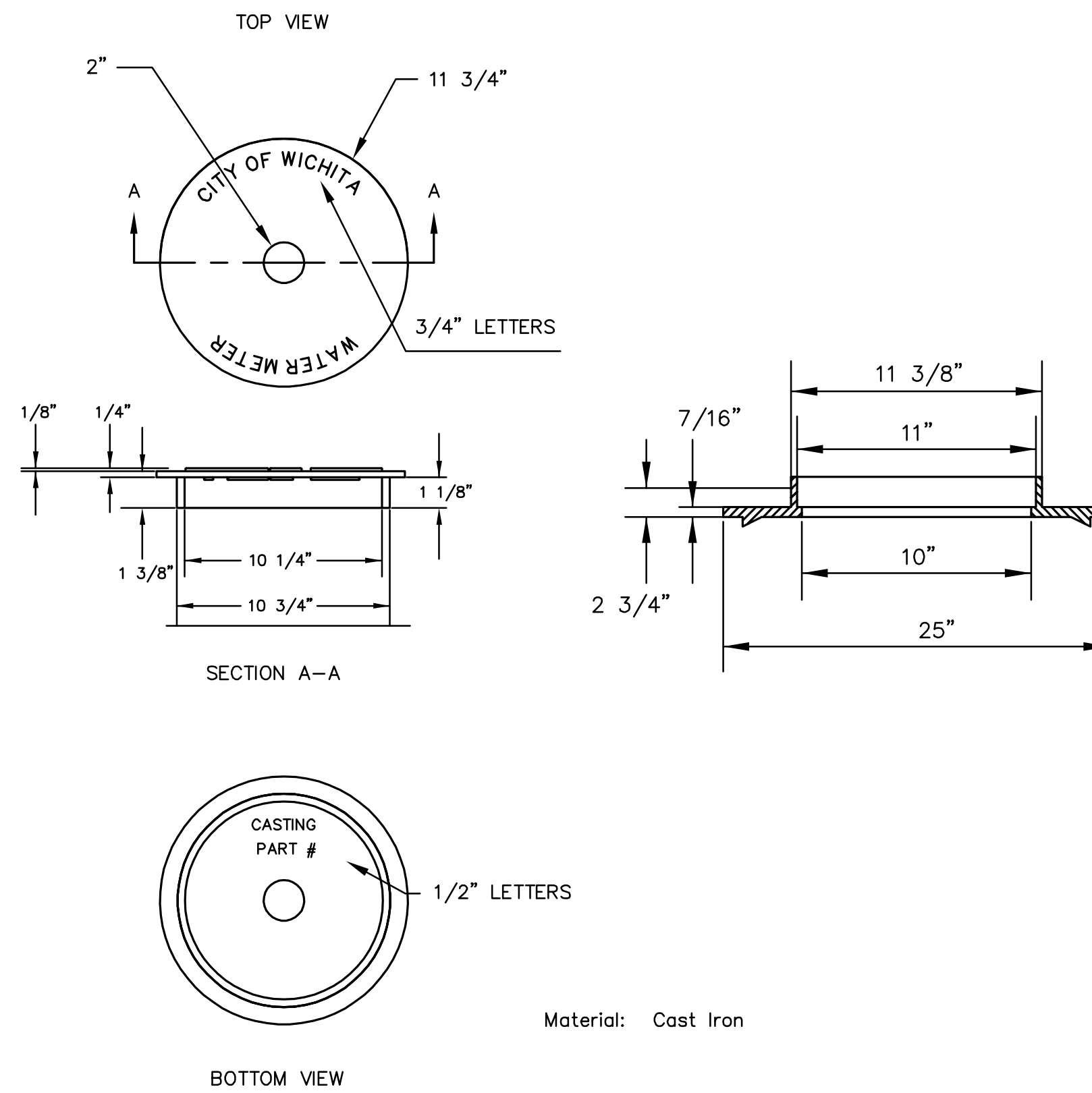
| PROJECT NUMBER | OCA NUMBER | DATE    |
|----------------|------------|---------|
| 1781PPW        | 607853     | 04/2013 |

CITY ENGINEER'S OFFICE  
CITY HALL - SEVENTH FLOOR  
455 NORTH MAIN STREET  
WICHITA, KANSAS 67202-1620  
(316) 268-4501

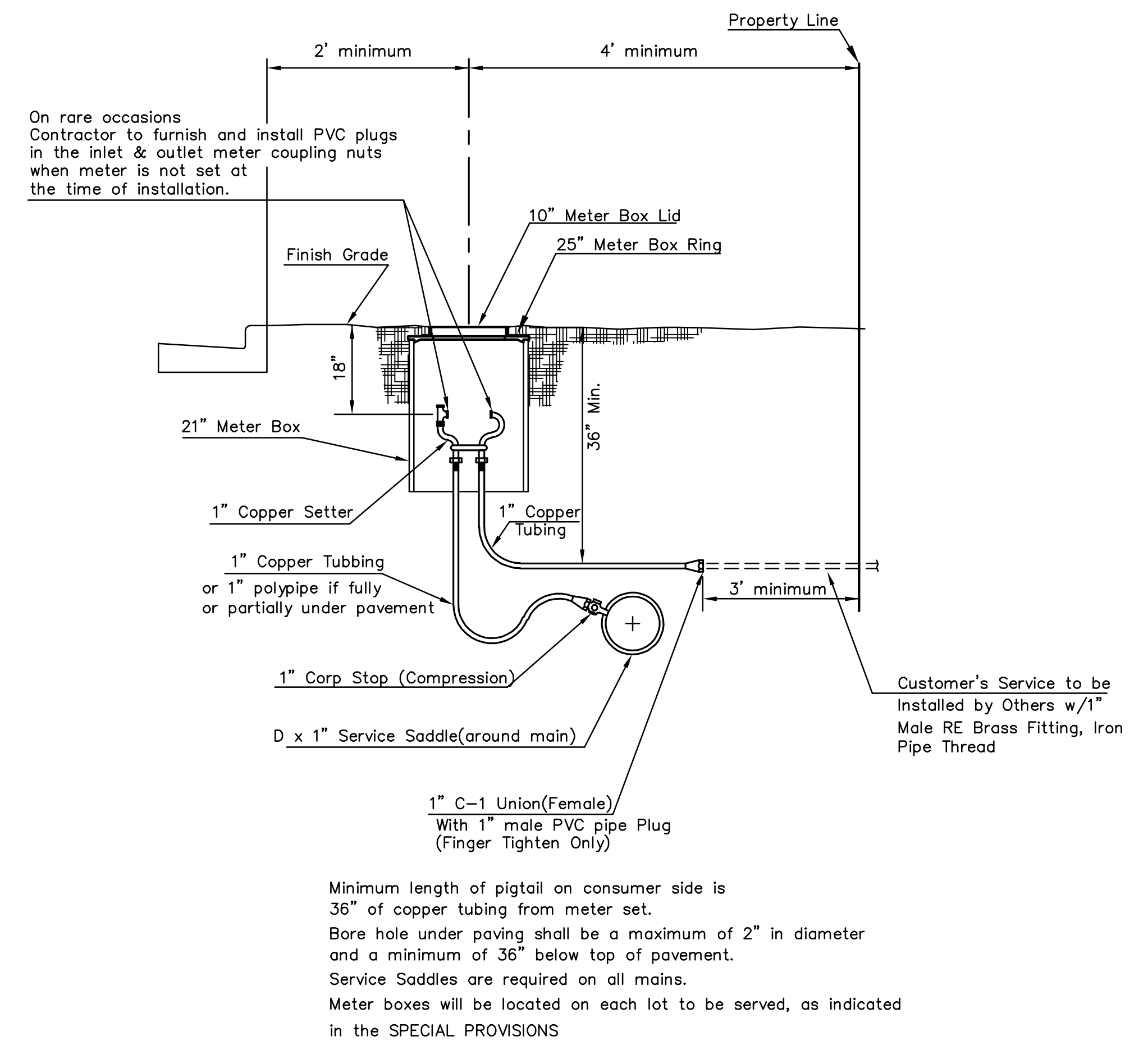
J:\Projects\2013\1301010668\_Equity\_Bank\5-Civil\CAD\Wk\13668\_CD1.dwg



**SERVICE TYPES**



**NOT TRAFFIC RATED  
RING & LID FOR 1" METER BOX**

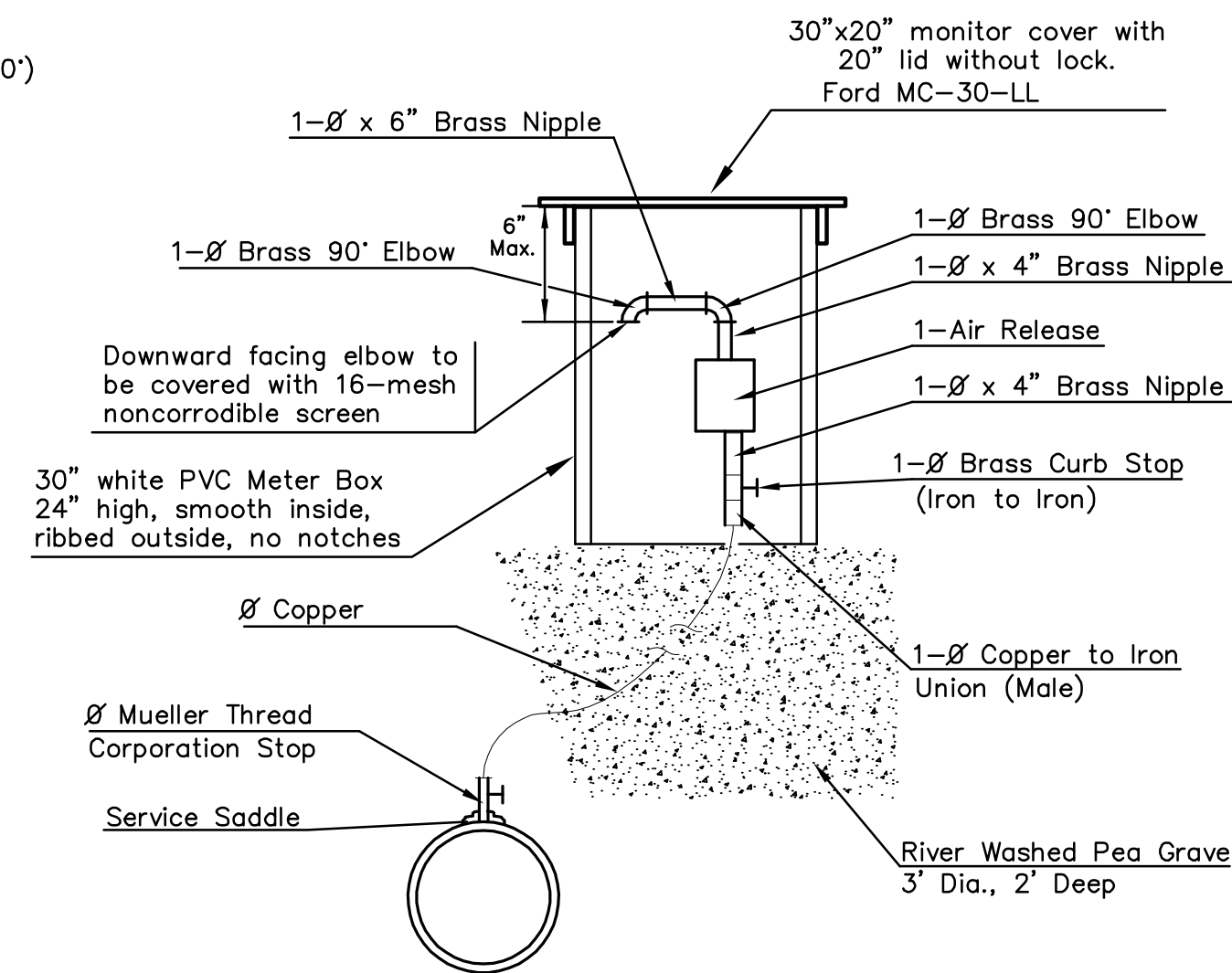


**TYPICAL 1" METER SETTING**

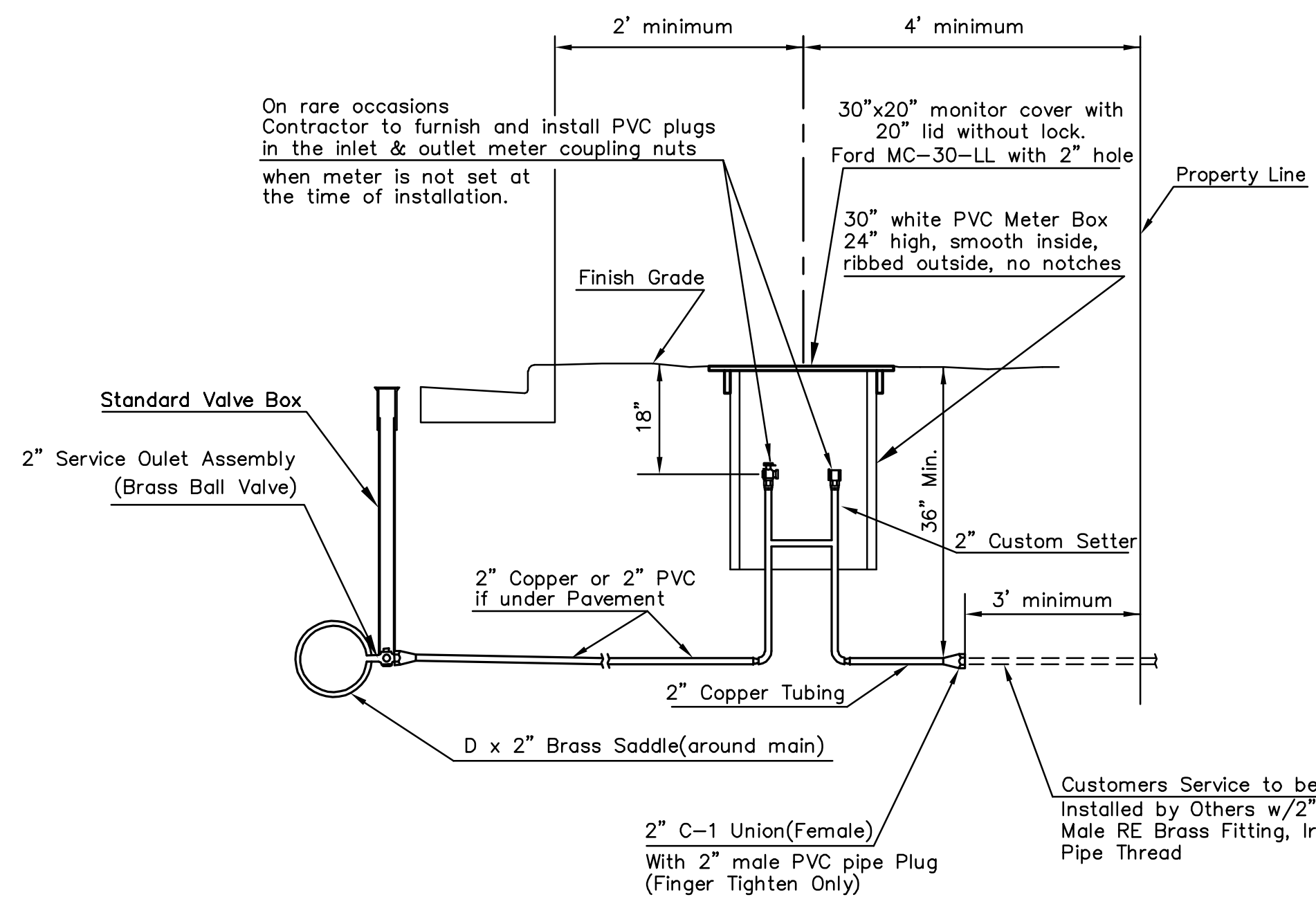
NOTE:

THE 1 1/2" AIR RELEASE ASSEMBLY WILL TYPICALLY BE USED ON WATER MAINS 24" AND SMALLER, AS SPECIFICALLY DESIGNATED IN THE PLANS. COMBINATION AIR RELEASE ASSEMBLIES WILL BE SPECIFICALLY DESIGNED FOR PROJECTS WITH LARGER MAINS, AND WILL BE INCLUDED IN THE PLANS.

- 1 - Ø Mueller Thread Corporation Stop
- Ø Type "K" Copper Tubing
- 1 - Ø Copper to Iron Union (Male)
- 1 - Ø Brass Curb Stop (Iron to Iron)
- 2 - Øx4" Brass Nipple
- Air Release
- 2 - Ø Brass Elbows (90°)
- 1 - 1"x6" Brass Nipple
- 1 - 30" Monitor Cover
- 1 - 20" Meter Lid

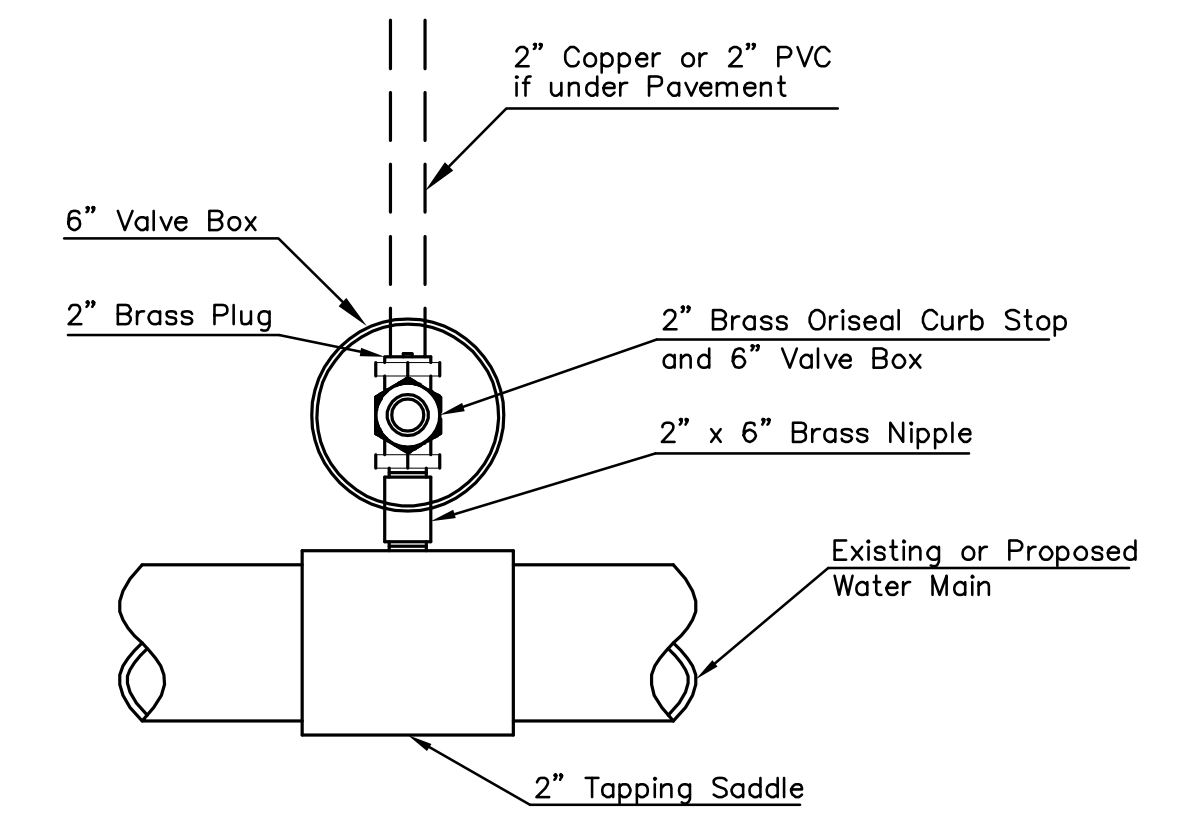


**MATERIALS FOR 1" or 2" AIR RELEASE ASSEMBLY  
Ø = 1" or 2"**



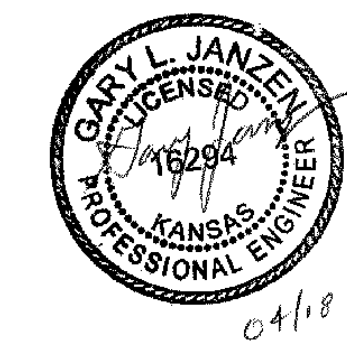
**TYPICAL 2" METER SETTING**

Note: ONE VALVE STEM EXTENSION FOR EACH VALVE BURIED GREATER THAN 5'.

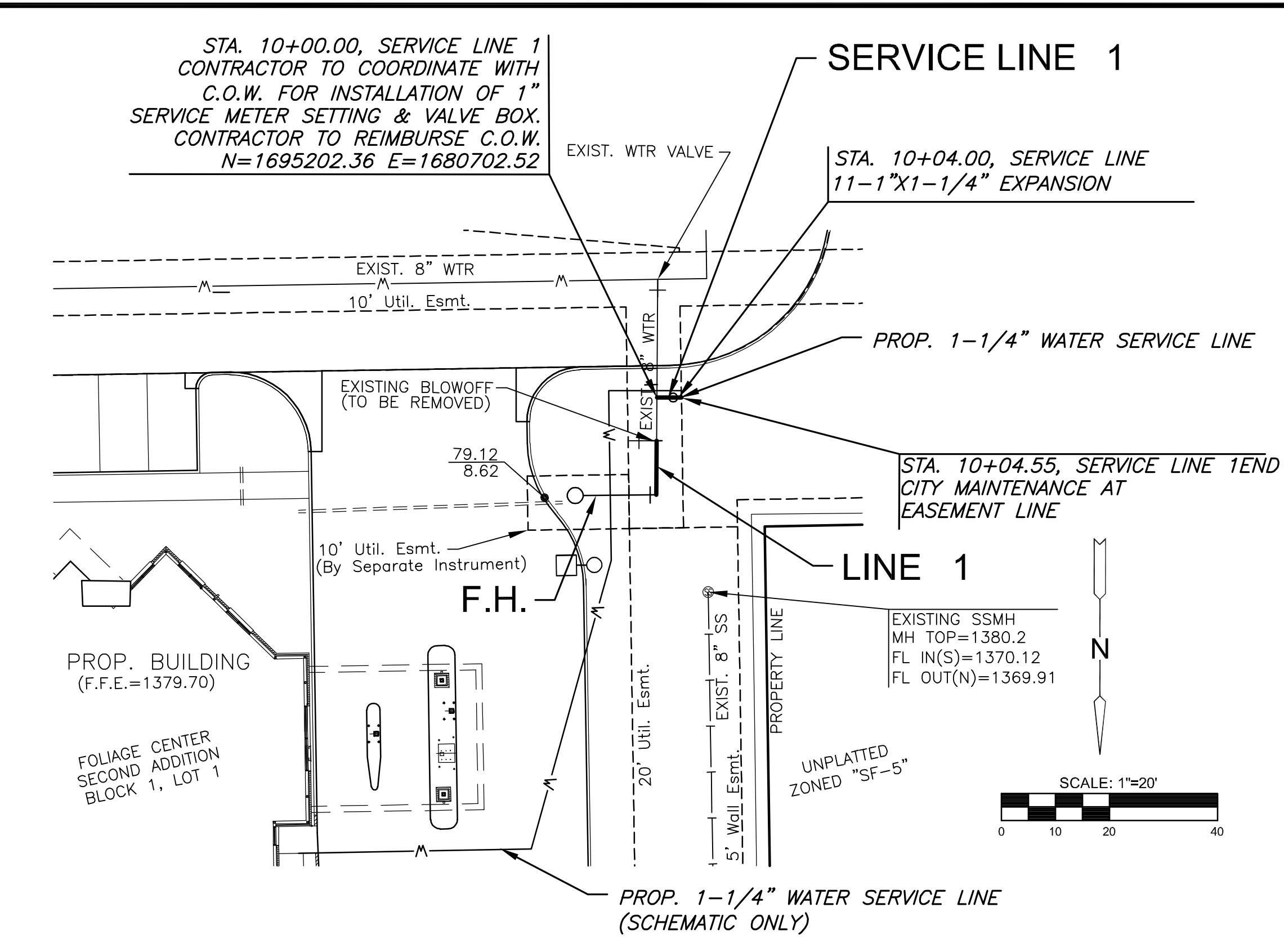
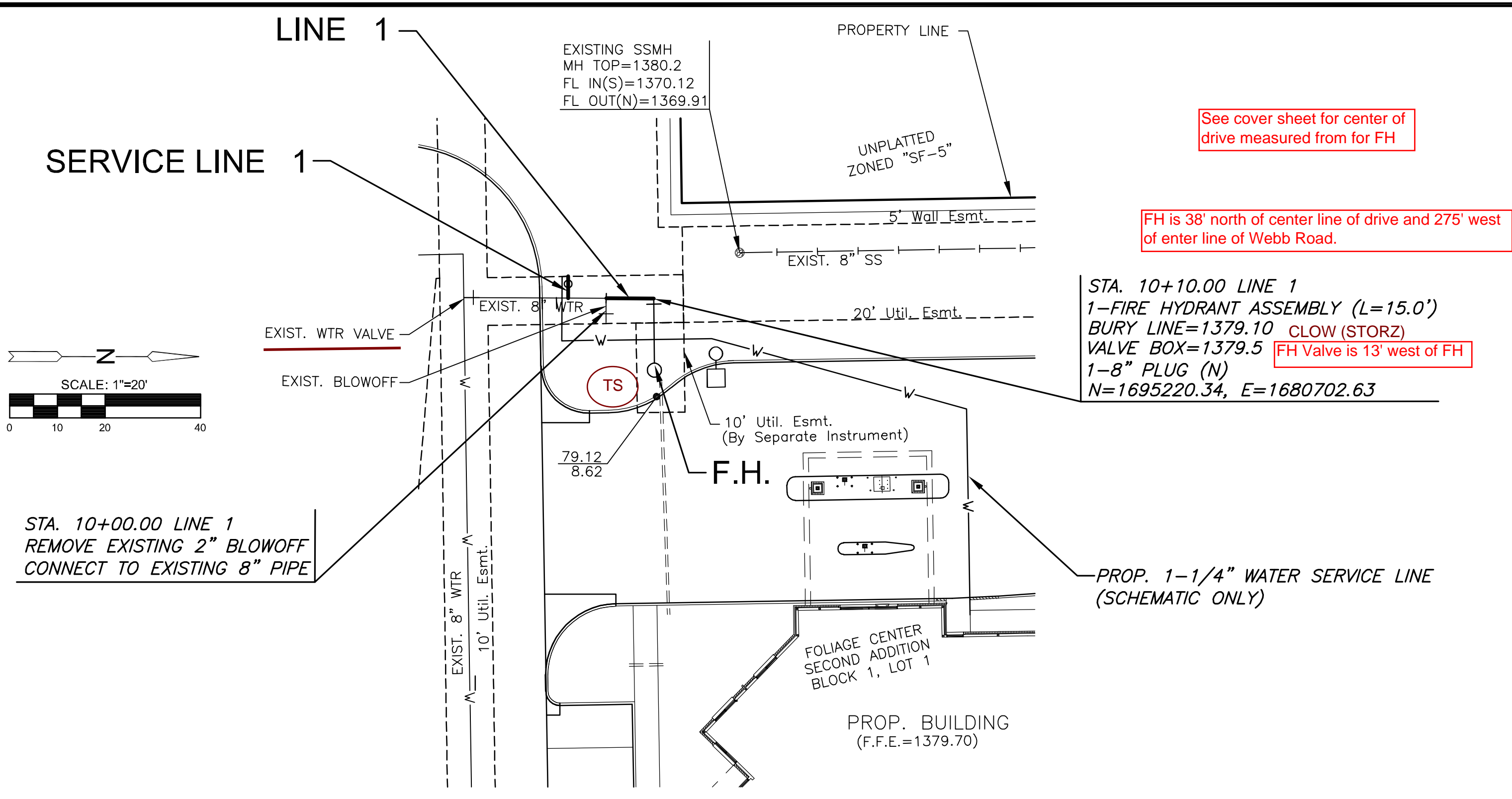


Note: Where the 2" Service Outlet Assembly is to be used to connect a 2" main to another main, the 2" valve shall be a 2" IPT Gate Valve. 2" ball or globe valves shall not be approved for this use.

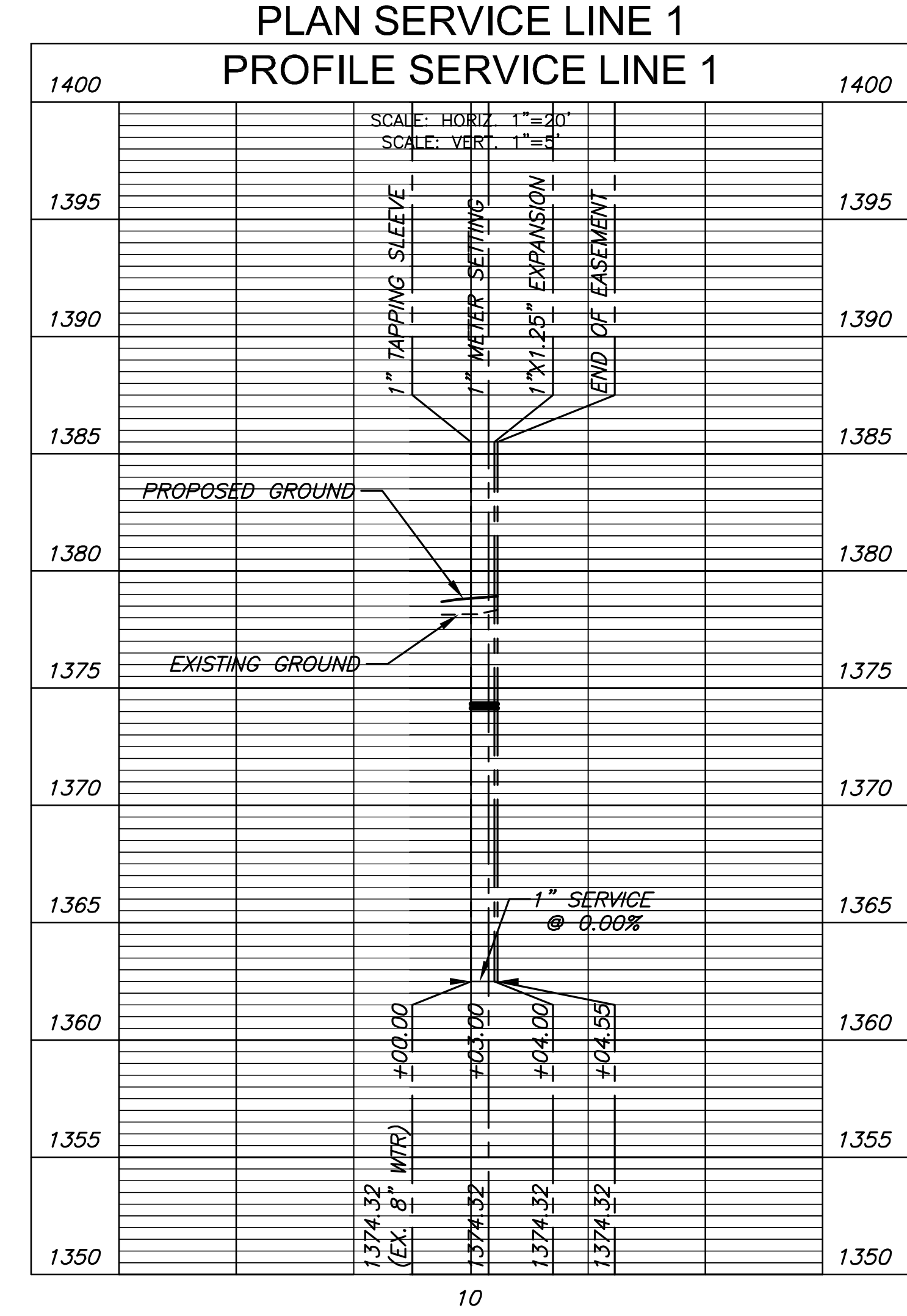
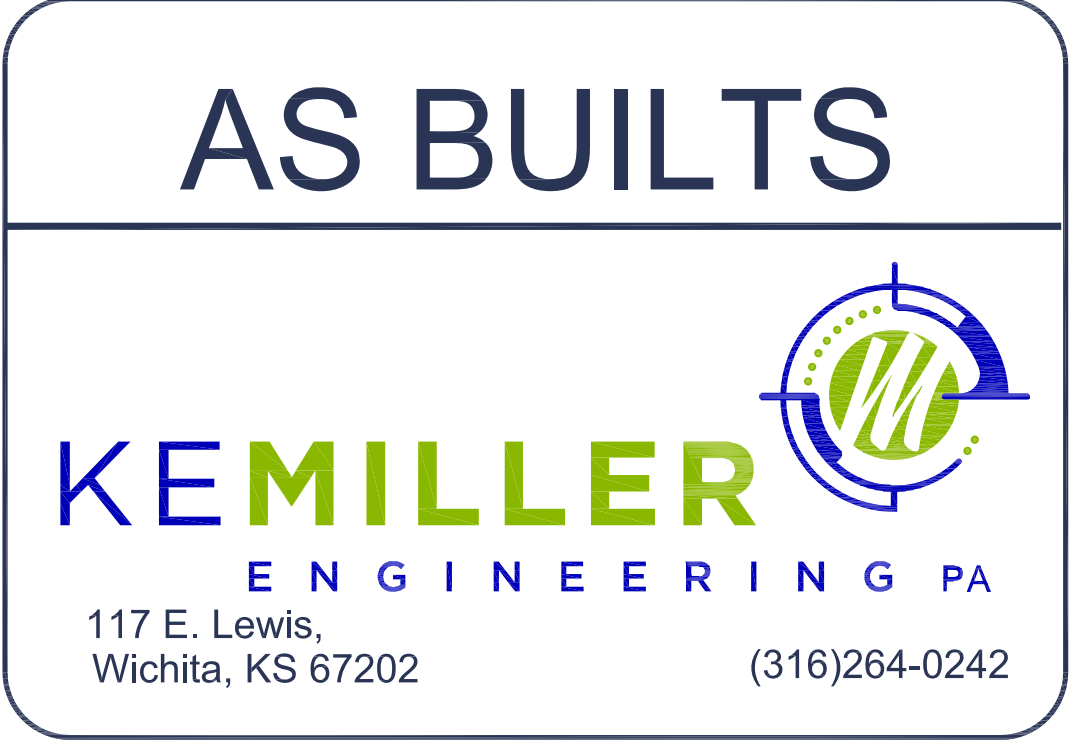
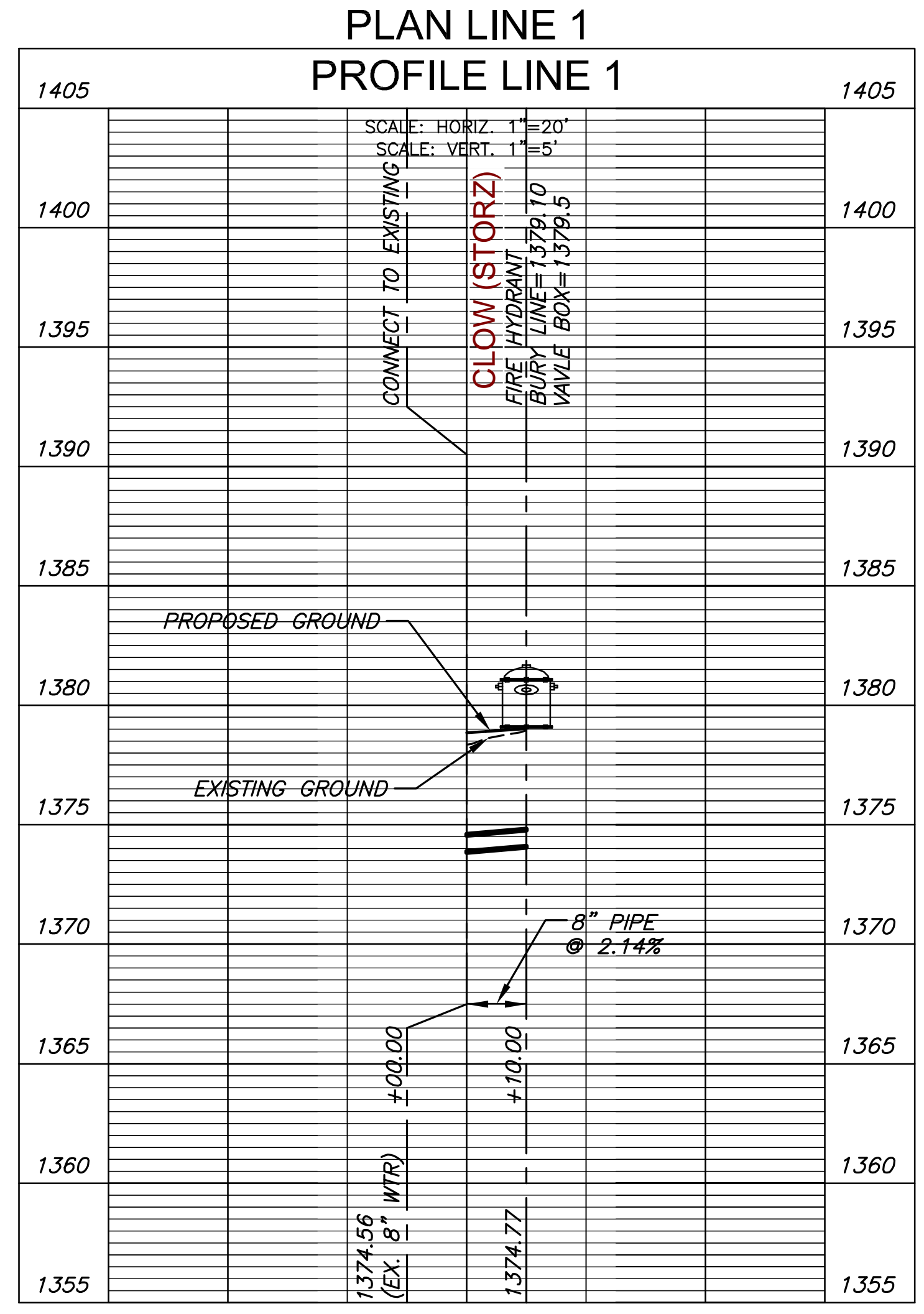
**2" SERVICE OUTLET ASSEMBLY**



| STANDARD WATER SERVICE DETAIL  |                      |                 |
|--|----------------------|-----------------|
| CITY ENGINEER<br><b>GARY JANZEN, P.E.</b>  |                      |                 |
| PROJECT NUMBER<br>1781PPW  | OCA NUMBER<br>607853 | DATE<br>01/2013 |
| CITY ENGINEER'S OFFICE<br>CITY HALL - SEVENTH FLOOR<br>455 NORTH MAIN STREET<br>WICHITA, KANSAS 67202-1620<br>(316) 268-4501 |                      | SHEET<br>3 OF 5 |



NOTE:  
 CONTRACTOR TO VERIFY LOCATION AND ELEVATION OF EXIST. 8" WATER LINE PRIOR TO CONSTRUCTION.

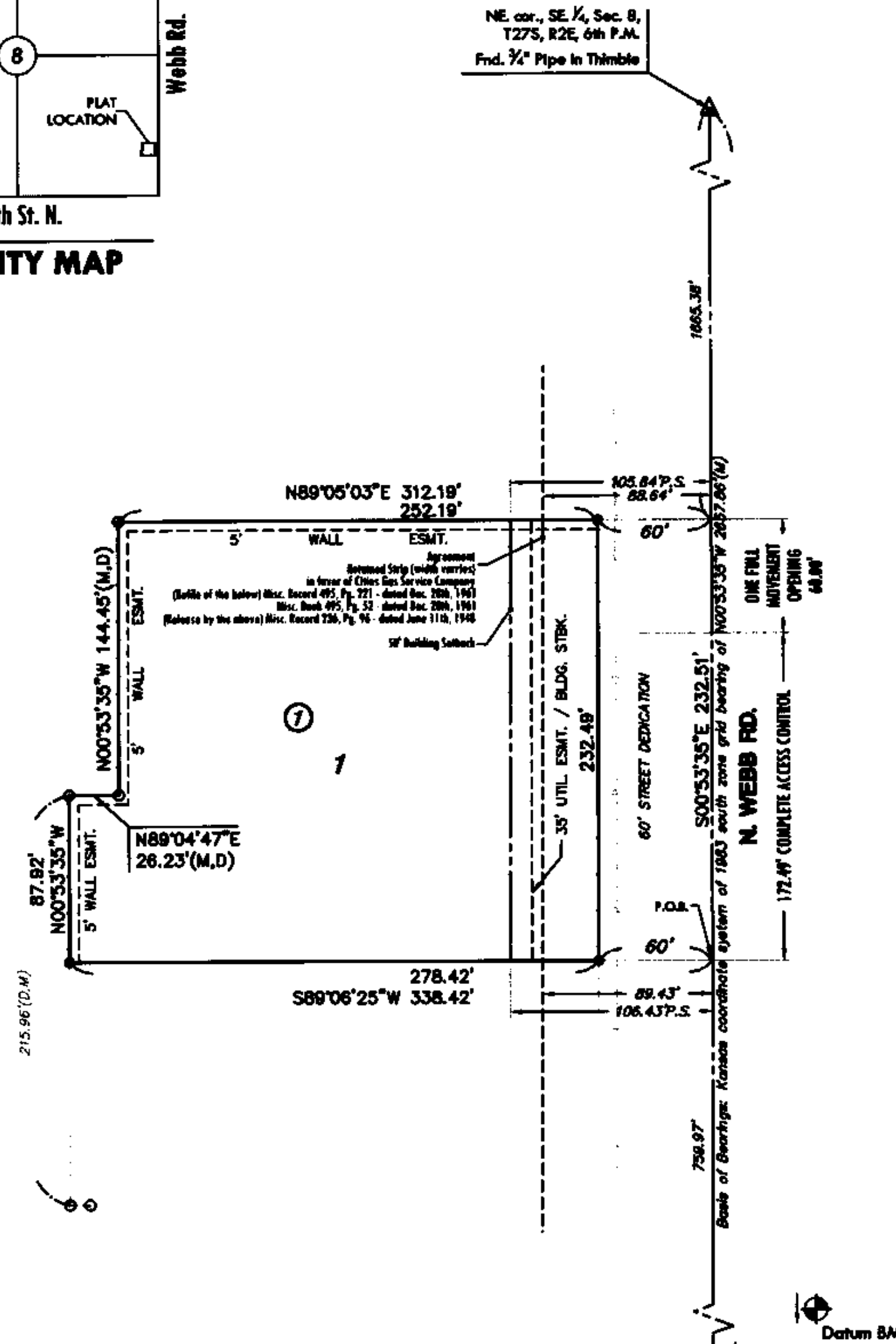
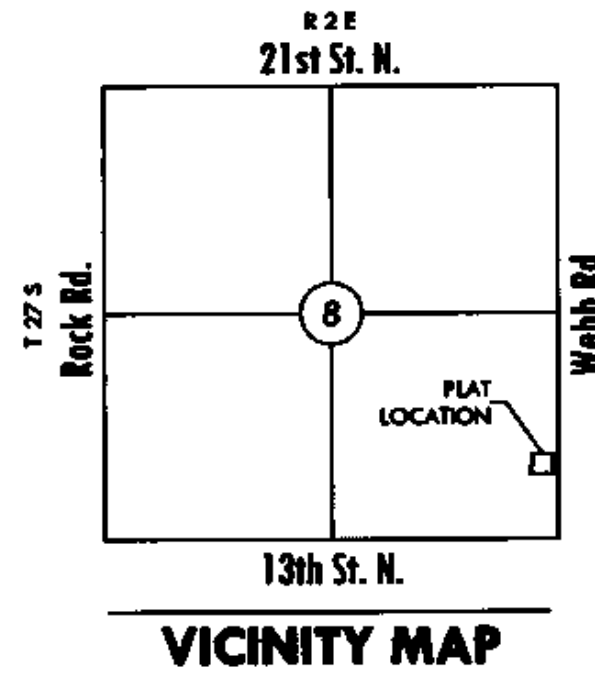


WATER DISTRIBUTION PLANS FOR  
**EQUITY BANK**  
 AT THE WATERFRONT

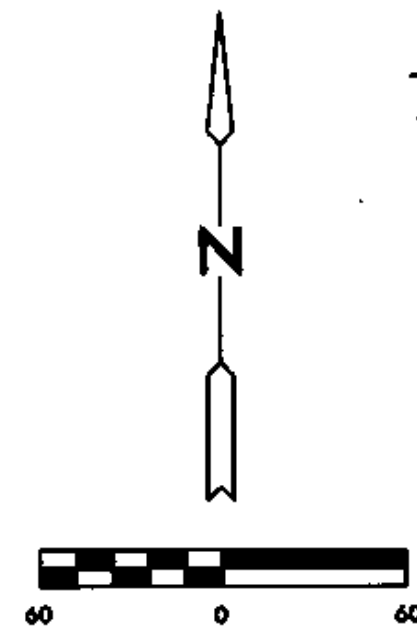
©2013 MKEC Engineering All Rights Reserved  
 www.mkec.com  
 These drawings and their contents, including, but not limited to, all concepts, designs, & ideas are the exclusive property of MKEC Engineering (MKEC), and may not be used or reproduced in any way without the express consent of MKEC.

**PLAN & PROFILES**

|             |           |         |
|-------------|-----------|---------|
| PROJECT NO. | 1781PPW   |         |
| DATE        | DEC. 2013 |         |
| SCALE       | AS SHOWN  |         |
| DESIGNED    | DRAWN     | CHECKED |
| SLF         | SLF       | JC      |
| NO.         | REVISION  | DATE    |
|             |           |         |
| SHEET NO.   |           |         |
| 4 OF 5      |           |         |



- LEGEND**
- ▲ = Section Corner Monument Found
  - = Found Survey Monument 3/4\"/>
  - = Set 3/4\"/>
  - (M) = Measured
  - (D) = Described or record description
  - P.S. = Pipeline setback



Basis of Bearings: Kansas coordinate system of 1983 south zone grid bearing of N00°53'35\"/>

**BENCH MARK**  
 Datum BM: Square cut on SW corner of signal light pole base at NE corner of Webb Rd. and 13th St.  
 Elev.=1373.345 (NGVD 29)

# FINAL PLAT

## FOLIAGE CENTER SECOND ADDITION

### AN ADDITION TO WICHITA, SEDGWICK COUNTY, KANSAS

#### CERTIFICATE OF SURVEY

I, Gregory J. Allison, a registered land surveyor in Kansas, do hereby certify that I have been in responsible charge of surveying and platting of "FOLIAGE CENTER SECOND ADDITION", an addition to Wichita, Sedgwick County, Kansas, into a Lot, a Block, and a Street the same being accurately set forth in the accompanying plat and described hereinafter.

A tract of land lying in the Southeast Quarter, Section 8, Township 27 South, Range 2 East, of the 6th Principal Meridian, Wichita, Sedgwick County, Kansas, said tract being described as follows:

COMMENCING at the southeast corner of said Southeast Quarter, thence along the east line of said Southeast Quarter on a Kansas coordinate system of 1983 south zone grid bearing of N00°53'35\"/>

Gregory J. Allison, PE, LS #1257  
 MKEC Engineering Consultants, Inc.  
 411 North Webb Road  
 Wichita, Kansas 67206

#### OWNER'S CERTIFICATE

Know all men by these presents that we the undersigned property owners of the land above set forth in the Registered Land Surveyor's Certificate, have caused the same to be surveyed and platted into a Lot, and a Block, and a Street the same to be known as "FOLIAGE CENTER SECOND ADDITION," an addition to Wichita, Sedgwick County, Kansas.

Easements for the construction and maintenance of public utilities, as indicated hereon, are hereby granted to and for the use of the public. The wall easements are non-exclusive and are platted for the construction and maintenance of a private wall; utilities may cross under the private wall.

The streets are hereby dedicated to and for the use of the public.

All abutters rights of access to or from Webb Road over and across the east line of "FOLIAGE CENTER SECOND ADDITION," are hereby granted to the public, provided however, Lot 1 is allowed one full movement connection to Webb Road as indicated hereon. These access controls are hereby granted to the City of Wichita, Kansas.

A drainage plan has been developed for this plot and all drainage easements, right-of-way, or reserves shall remain at established grades or as modified with the approval of the applicable City or County Engineer, and unobstructed to allow for the conveyance of storm water.

BEECH LAKE INVESTMENT, LLC, a Kansas limited liability company

*Johnny Stevens*, manager  
*Stephen L. Clark*, manager

STATE OF KANSAS, SEDGWICK COUNTY) ss:  
 This instrument was acknowledged before me on 16th day of March, 2008, by Johnny Stevens, and Stephen L. Clark, managers, Beech Lake Investment, LLC, a Kansas limited liability company.

IN WITNESS WHEREOF, I have hereunto set my hand and affixed my official seal, the day and year last above written.

*Cynthia A. Womack*  
 Notary Public, State of Kansas  
 My App. Expires 2/7/2009

*Cynthia A. Womack*  
 Notary Public, Cynthia A. Womack  
 My Term Expires: February 7, 2009

#### PLANNING COMMISSION CERTIFICATE

This plat of "FOLIAGE CENTER SECOND ADDITION" has been submitted to and approved by the Wichita-Sedgwick County Metropolitan Area Planning Commission, Wichita, Kansas.

Dated this 26th day of February, 2008

WICHITA-SEDGWICK COUNTY METROPOLITAN AREA PLANNING COMMISSION

*M.S. Mitchell*  
 M.S. Mitchell, Chair

Attest: *John L. Schlegel*  
 John L. Schlegel, Secretary



#### GOVERNING BODY CERTIFICATE

The dedications shown on this plat are hereby accepted and this plat is hereby approved by the governing body of the City of Wichita, Kansas.

Dated this 25 day of March, 2008

At the direction of the City Council.

*Carl Brewer*  
 Carl Brewer, Mayor

Attest: *Karen Sublett*  
 Karen Sublett, City Clerk

#### TRANSFER RECORD

STATE OF KANSAS, SEDGWICK COUNTY) ss:  
 Entered on transfer record this 16th day of April, 2008

*Don Brace*  
 Don Brace, County Clerk



#### REGISTER OF DEEDS CERTIFICATE

This is to certify that this instrument was filed for record in the Register of Deeds office this 9th day of April, 2008, at 11:11:59 o'clock A.M. and is duly recorded.

*John B. Meek*  
 John B. Meek, Register of Deeds

Attest: *Tonya E. Buckingham*  
 Tonya E. Buckingham, Deputy

Sedgwick County  
 Register of Deeds - 1st Floor  
 1000 E. 15th St., Wichita, KS 67202  
 Phone: 316-261-1500  
 Fax: 316-261-1501  
 Website: www.sedgwickcounty.org

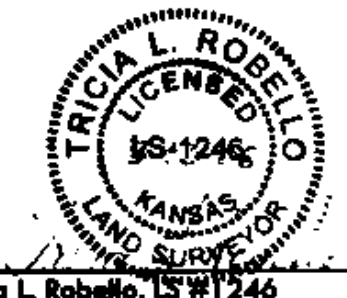
Record #: 1684583  
 Page Recorded: 1  
 Counter Initials: JP  
 Authorized By: \_\_\_\_\_  
 Recording Fee: \$20.00

Date Recorded: 4/9/2008 11:11:59 AM

#### COUNTY SURVEYOR

Reviewed in accordance with K.S.A. 58-2005 on this 16th day of March, 2008.

*Tricia L. Robello*  
 Tricia L. Robello, LS #1246  
 Deputy County Surveyor  
 Sedgwick County, Kansas



411 N. WEBB ROAD  
 WICHITA, K.S. 67206  
 316-684-9600



STORM WATER SEWER PLAN FOR  
**EQUITY BANK**  
 AT THE WATERFRONT

©2013 MKEC Engineering All Rights Reserved  
 These drawings and their contents, including, but not limited to, all concepts, designs, & ideas are the exclusive property of MKEC Engineering (MKEC), and may not be used or reproduced in any way without the express consent of MKEC.

|                                |           |
|--------------------------------|-----------|
| FOLIAGE CENTER 2ND. FINAL PLAT |           |
| PROJECT NO.                    | 1781PPW   |
| DATE                           | DEC. 2013 |
| SCALE                          | AS SHOWN  |
| DESIGNED                       | DRAWN     |
| SLF                            | SLF       |
| CHECKED                        | XXX       |
| NO.                            | REVISION  |
| DATE                           |           |
| SHEET NO.                      |           |
| 5 OF 5                         |           |