

BENCHMARKS

BM#1
City of Wichita Disc at NW Corner of Mt Vernon
and Oliver Intersection on Signal Pole Base.
Elevation = 1336.52 (NAVD'88")

BM#2
City of Wichita Disc at NE Corner of Mt Vernon
and Oliver Intersection on Signal Pole Base.
Elevation = 1336.43 (NAVD'88")

BM#3 / Pt. 107
Magnail W/Washer
Oliver Sta. 14+83.57, 53.33 Rt.
Elevation = 1337.18 (NAVD'88")

BM#4 / Pt. #802,
CP/BM (Cross)
Mt Vernon
Sta. 26+99.08, 36.40 Lt.
Elevation = 1329.54(NAVD'88")

BM#5 / Pt. #803,
CP/BM (Cross)
Mt Vernon
Sta. 14+19.68, 24.67 Rt.
Elevation = 1337.44(NAVD'88")

NOTE:
All Elevations for this project are in
NAVD '88" Datum

CP # 105
Thimble W/3/4 Rebar
Sta. 36+47.29, Oliver
N. 12,614.05
E. 19,909.26

CP # 106
Thimble W/3/4 Rebar
Sta. 20+00.00, Mt Vernon
Sta. 10+00.00, Oliver
SE Corner of NE 1/4 Sec 35
Township 27S, R1E
N. 9967.03
E. 19,947.16

CP # 803, BM#5
CP/BM (Cross)
Mt Vernon
Sta. 14+19.68, 24.67 Rt.
N. 9,930.08
E. 19,368.50
Elevation = 1337.44(NAVD'88")

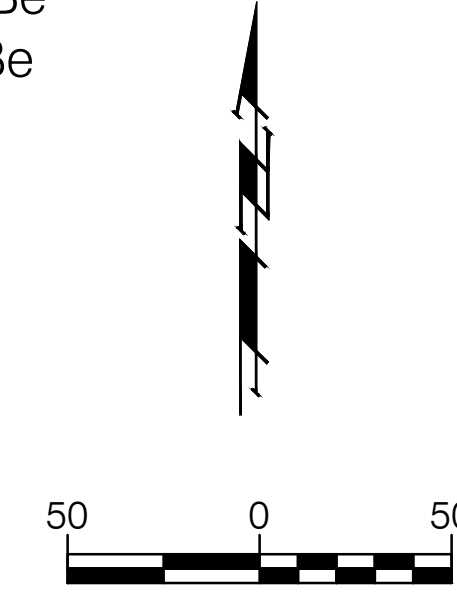
CP # 104
Thimble W/3/4 Rebar
Sta. 6+70.49, Mt Vernon
N. 9,938.88
E. 18,618.05

CP # 101
Magnail W/Washer
Oliver
Sta. 6+62.25, 46.37 Lt.
N. 9,628.63
E. 19,905.85

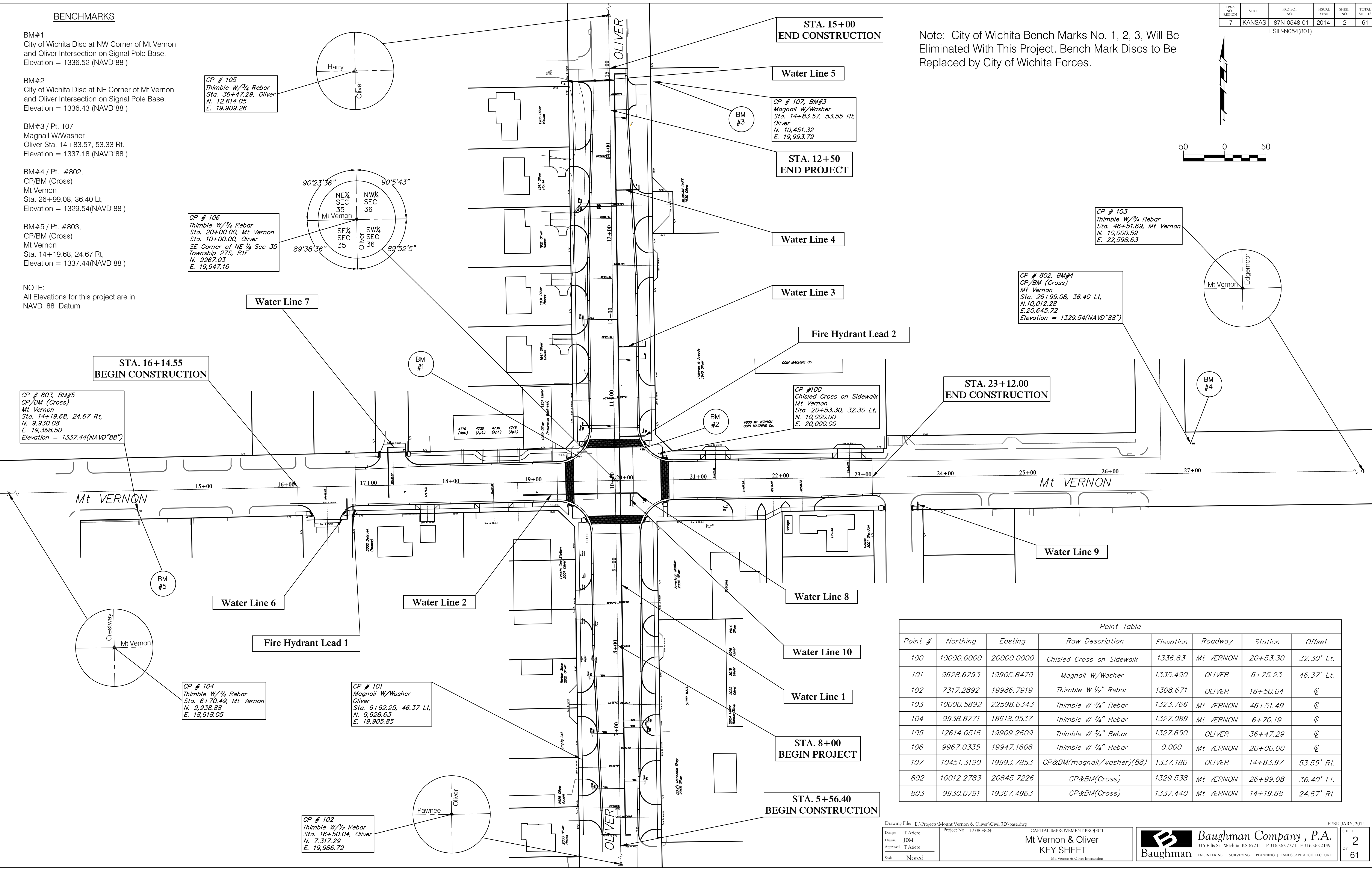
CP # 102
Thimble W/1/2 Rebar
Sta. 16+50.04, Oliver
N. 7,317.29
E. 19,986.79

FHWA REGION	STATE	PROJECT NO.	FISCAL YEAR	SHEET NO.	TOTAL SHEETS
7	KANSAS	87N-0548-01	2014	2	61

HSIP-N054(801)



Note: City of Wichita Bench Marks No. 1, 2, 3, Will Be Eliminated With This Project. Bench Mark Discs to Be Replaced by City of Wichita Forces.



Point Table

Point #	Northing	Easting	Raw Description	Elevation	Roadway	Station	Offset
100	10000.0000	20000.0000	Chisled Cross on Sidewalk	1336.63	Mt VERNON	20+53.30	32.30' Lt.
101	9628.6293	19905.8470	Magnail W/Washer	1335.490	OLIVER	6+25.23	46.37' Lt.
102	7317.2892	19986.7919	Thimble W 1/2" Rebar	1308.671	OLIVER	16+50.04	℄
103	10000.5892	22598.6343	Thimble W 3/4" Rebar	1323.766	Mt VERNON	46+51.49	℄
104	9938.8771	18618.0537	Thimble W 3/4" Rebar	1327.089	Mt VERNON	6+70.19	℄
105	12614.0516	19909.2609	Thimble W 3/4" Rebar	1327.650	OLIVER	36+47.29	℄
106	9967.0335	19947.1606	Thimble W 3/4" Rebar	0.000	Mt VERNON	20+00.00	℄
107	10451.3190	19993.7853	CP&BM(magnail/washer)(88)	1337.180	OLIVER	14+83.97	53.55' Rt.
802	10012.2783	20645.7226	CP&BM(Cross)	1329.538	Mt VERNON	26+99.08	36.40' Lt.
803	9930.0791	19367.4963	CP&BM(Cross)	1337.440	Mt VERNON	14+19.68	24.67' Rt.