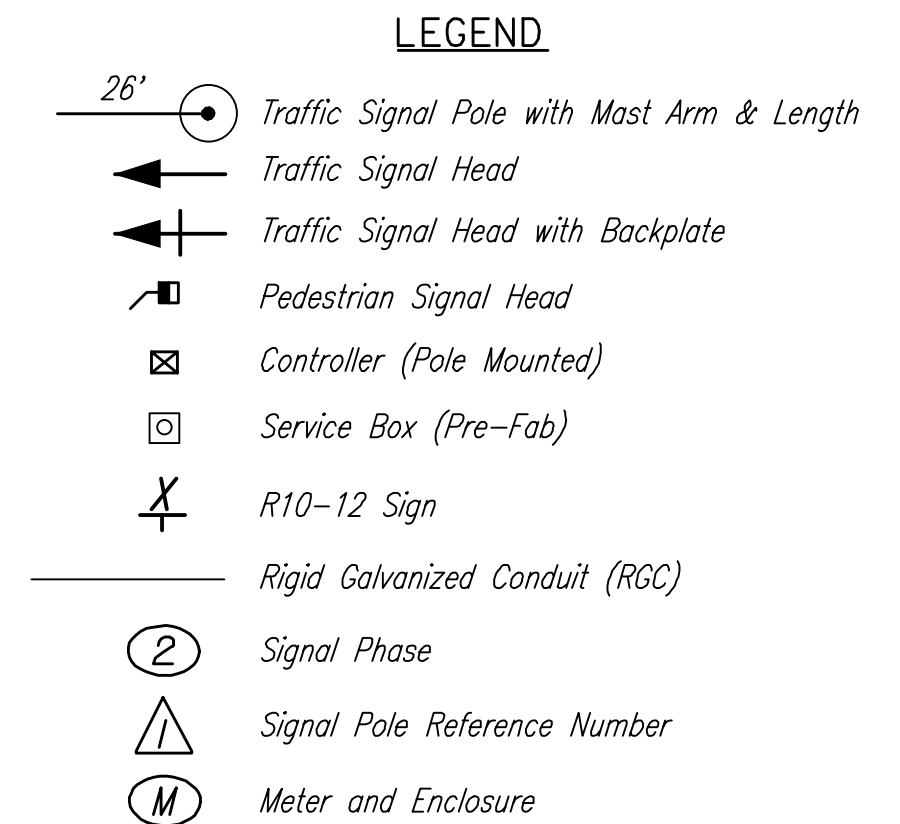
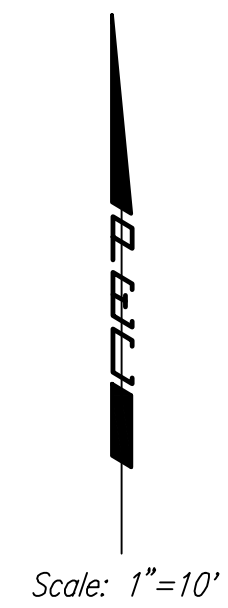
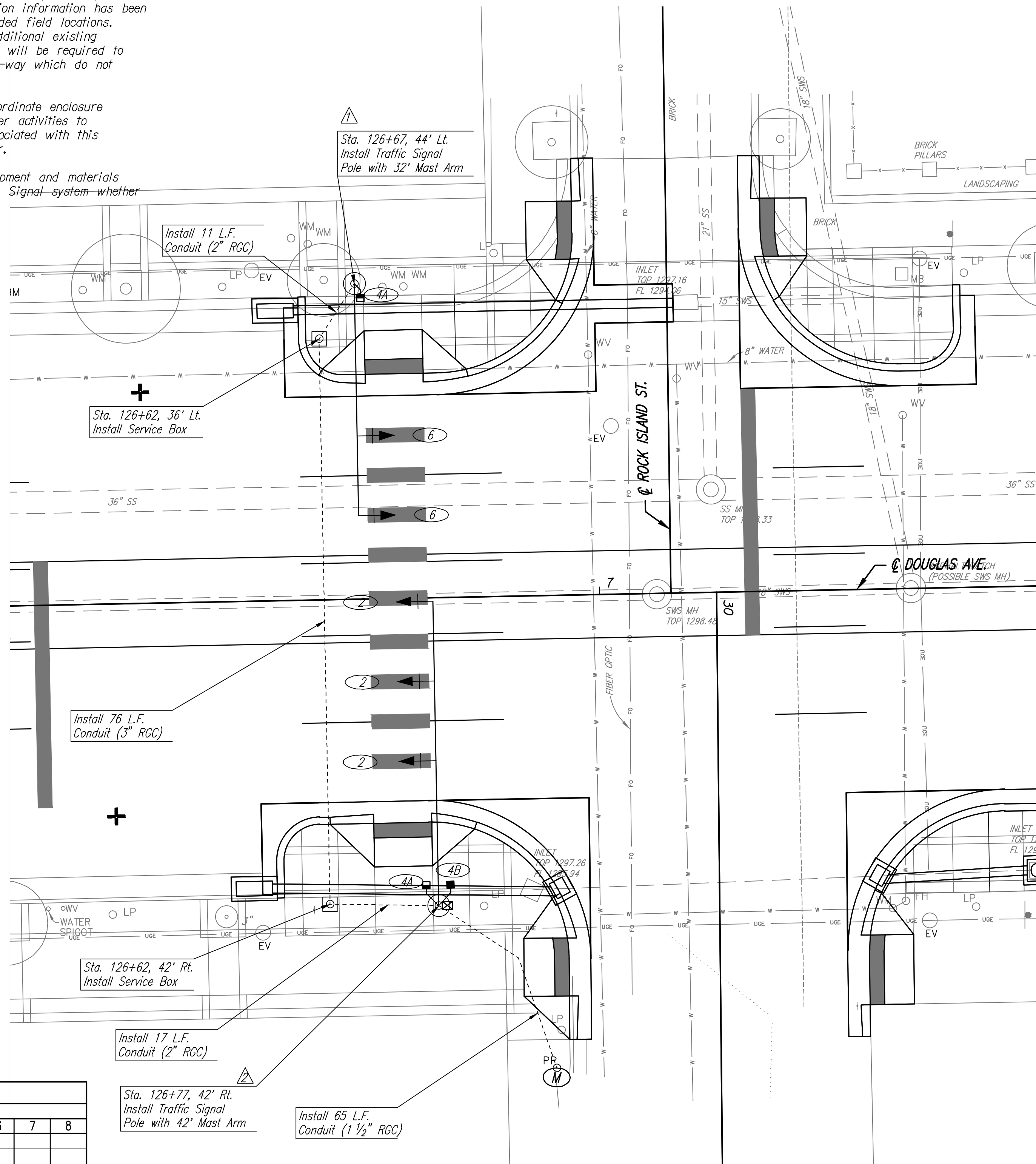


GENERAL NOTES

Existing utilities and their locations, as shown on the plans, represent the best information obtainable for design. Location information has been obtained from record drawings or company provided field locations. The plan locations shown are not guaranteed. Additional existing utilities may also be encountered. The Contractor will be required to work around existing utilities within the right-of-way which do not conflict with proposed construction.

The Contractor shall notify Westar Energy to coordinate enclosure service connection, meter installation, and all other activities to complete the traffic signal installation. Fees associated with this work shall be the responsibility of the Contractor.

The Contractor shall furnish and install all equipment and materials necessary for complete operation of each Traffic Signal system whether specifically mentioned or not.



FUNCTION TABLE

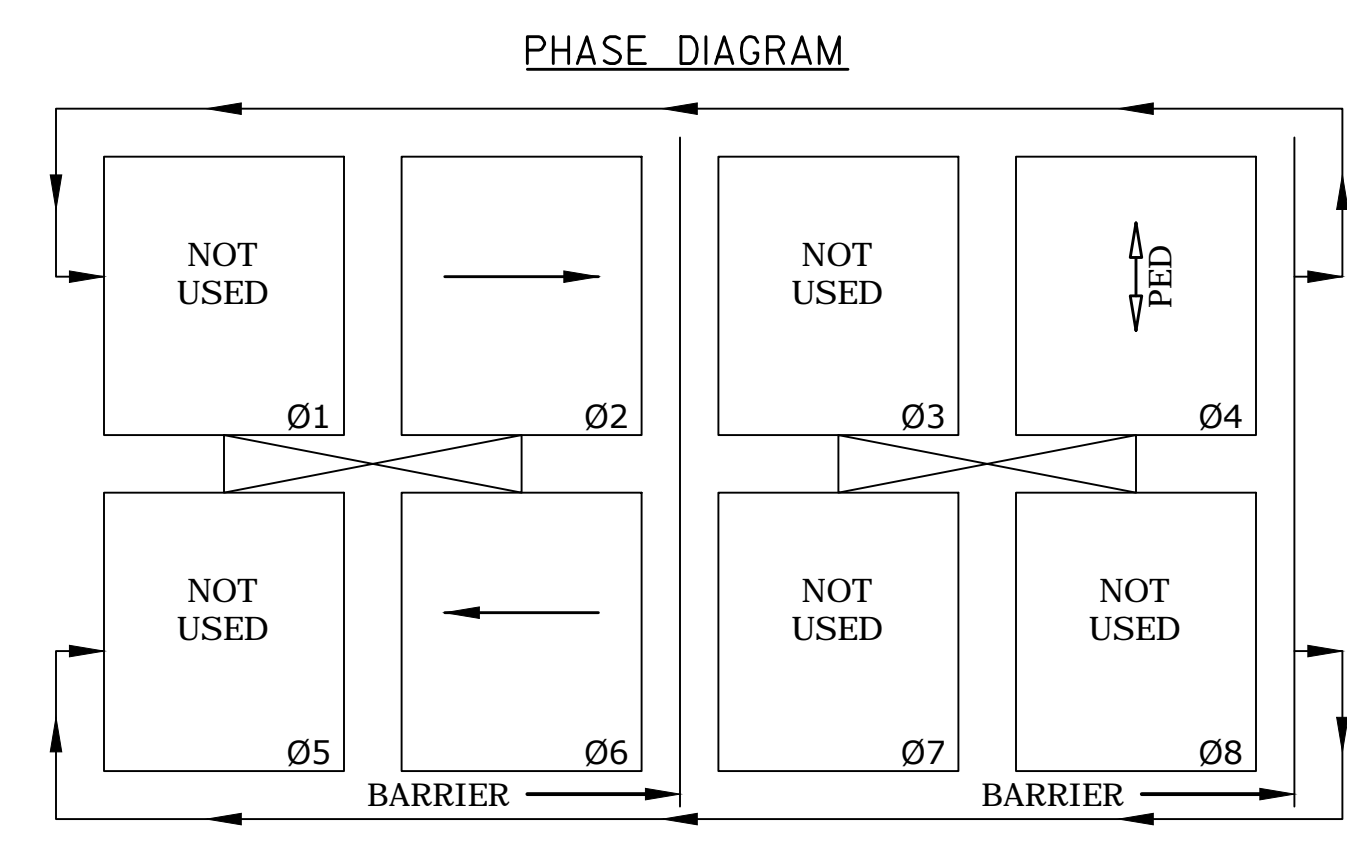
FUNCTION	PHASE							
	1	2	3	4	5	6	7	8
VEHICLE RECALL		X					X	
PED RECALL								
RED LOCK								
YELLOW LOCK								
PERMIT	X						X	
PED PHASES			X					
LEAD PHASES								
DOUBLE ENTRY								
SEQUENTIAL TIMING								
START-UP YELLOW								
OVERLAP A								
OVERLAP B								
OVERLAP C								
OVERLAP D								
EXCLUSIVE								
SIMULTANEOUS GAP								

Function Table reflects initial operation.

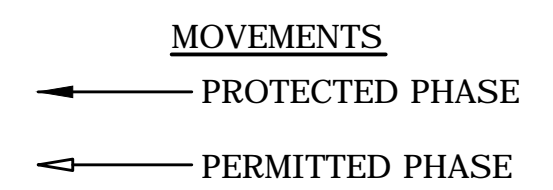
PHASE TIMING

FUNCTION	PHASE							
	1	2	3	4	5	6	7	8
MAX. I								
MAX. II/HFDW								
WALK				7.0				
FLASH DW				17.0				
MAX. INITIAL								
MIN. GREEN								
T B R								
T T R								
OBSERVE GAP								
PASSAGE								
MIN. GAP								
ADDED ACTUATION								
YELLOW				4.0				
RED CLEAR								
RED REVERT								
WALK II								

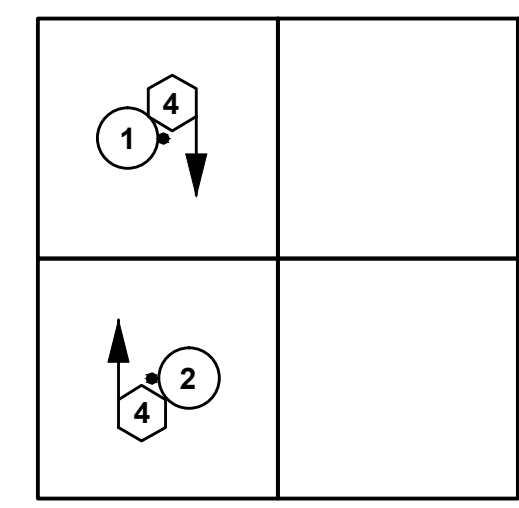
Phase Timing reflects initial operation.



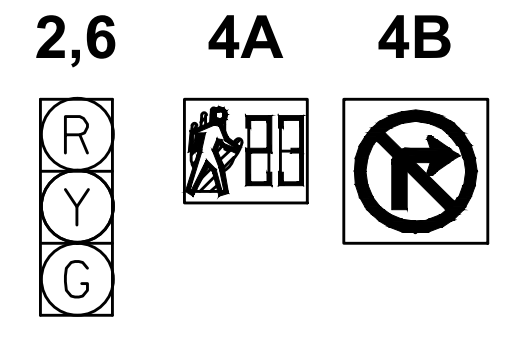
NOTE:
DASHED LINES CONNECTING PHASES DENOTE NON-CONFLICTING SIGNAL PHASES THAT CAN OCCUR CONCURRENTLY.
PEDESTRIAN INTERVALS TO OCCUR ONLY AFTER PUSHBUTTON ACTIVATION.
TRAFFIC SIGNAL TO DWELL IN PHASE 2/6.



PEDESTRIAN PUSH BUTTON LOCATION & DESTINATION



SIGNAL HEADS



**EQUIPMENT SPECIFICATIONS
2070 CONTROLLER**

- A. Controller Unit: The 2070L controller supplied shall meet the requirements outlined in CalTrans TEES 2002 (latest revision), and the following requirements:
- The 2070L controller shall have a 19" EIA rack mountable chassis (mated to the I70 cabinet).
 - 2070-1B CPU module with RJ-45 Ethernet port.
 - 2070-2A CI field I/O module for compatibility with CalTrans style CI connector.
 - 2070-3B 8X40 front panel with LCD display.
 - 2070-4A 10 amp power supply.
 - 2070-7A asynchronous serial communications module (RS-232).
 - Any unused slot position shall have a cover plate.
- B. Conflict Monitor: The Conflict Monitor supplied shall be 2010 ECL conflict monitor

PRINTS ISSUED

DATE	PURPOSE	NO.
04.29.13	FIELD CHECK	
05.31.13	OFFICE CHECK	
12.23.13	FOR CONSTRUCTION	

**DOUGLAS AVE. BUS
FACILITY IMPROVEMENTS
(472-85080)
WICHITA, KS**

LawKington Architecture
Engineering · Planning · Interiors · Landscapes

LawKington Architecture
345 RIVERVIEW WICHITA, KS 67203
Phone (316) 268-0230 Fax: (316) 268-0205

CONTACT: Jeffrey A. Best, ASIA
PROJECT NUMBER:

12856

SHEET TITLE:
TRAFFIC SIGNAL PLAN

SHEET NUMBER:

C35