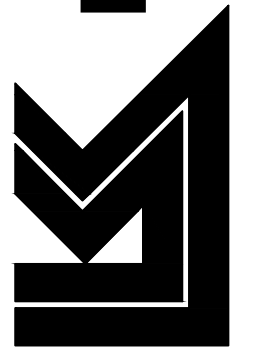


PRINTS ISSUED		
DATE	PURPOSE	NO.
04.29.13	FIELD CHECK	
05.31.13	OFFICE CHECK	
12.23.13	FOR CONSTRUCTION	

DOUGLAS AVE. BUS
FACILITY IMPROVEMENTS
(472-85080)
WICHITA, KS

LawKingdon Architecture
Engineering · Planning · Interiors · Landscapes



LawKingdon Architecture
345 RIVERVIEW WICHITA, KS 67203
Phone (316) 268-0230 Fax: (316) 268-0205

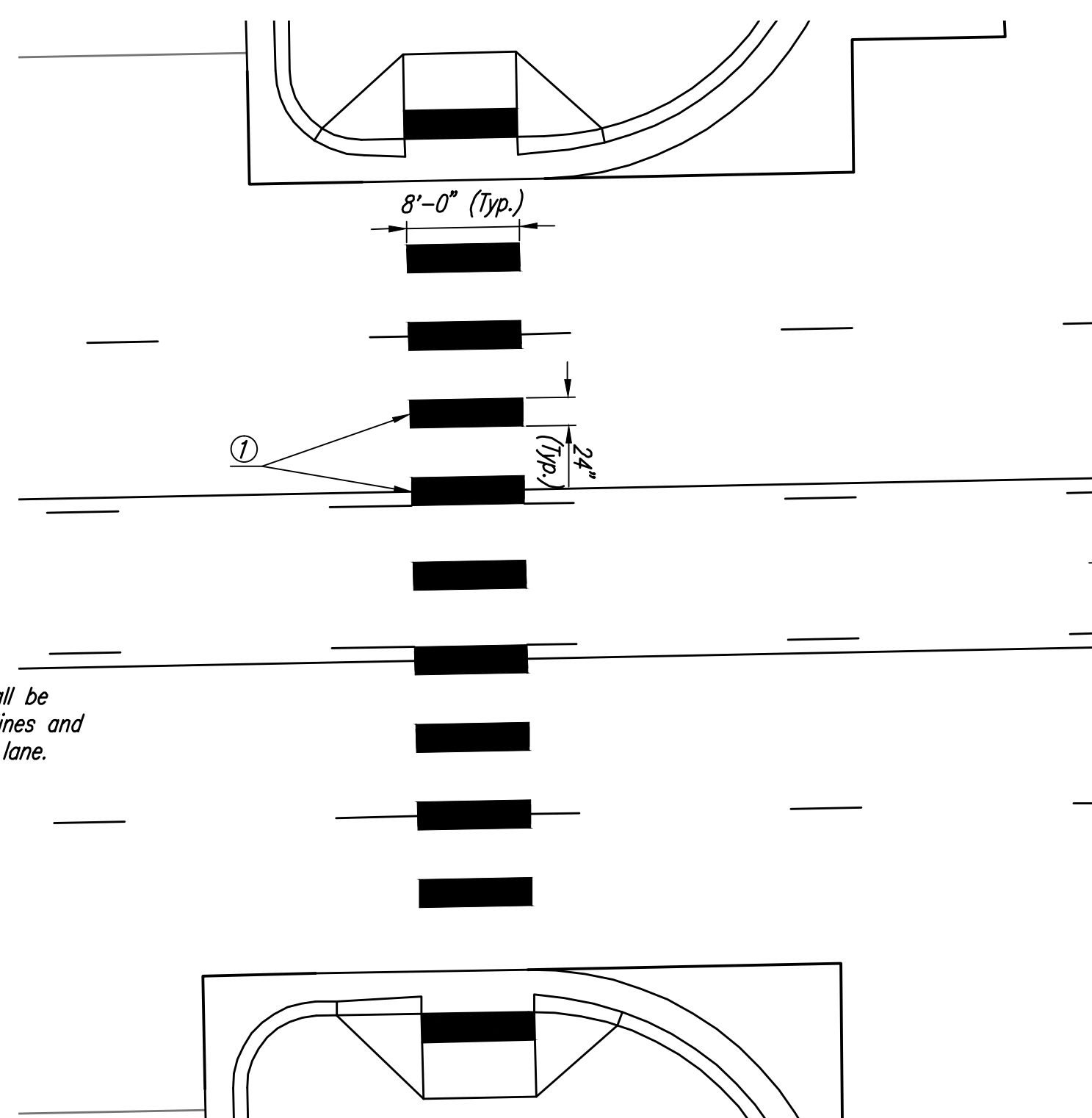
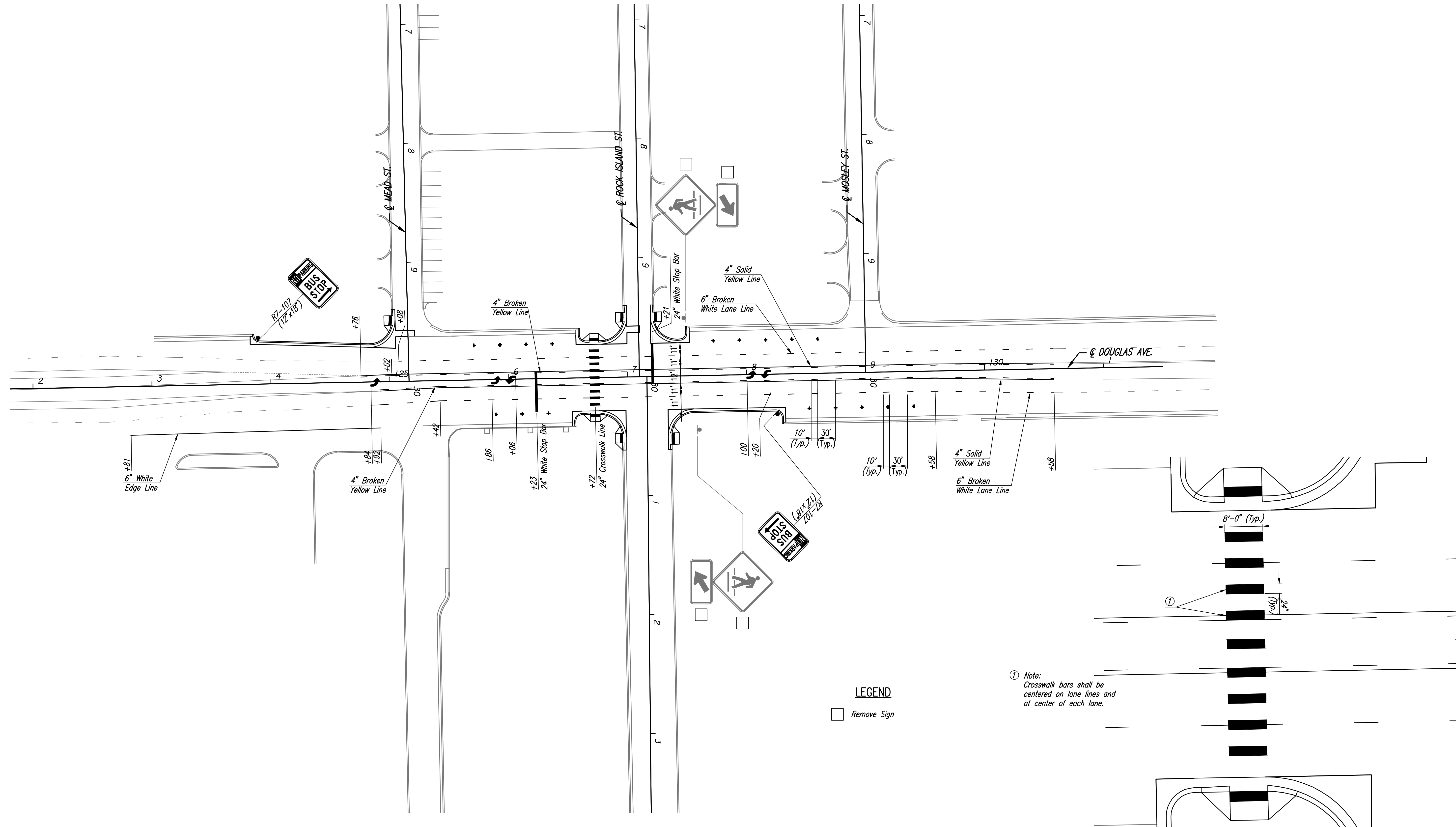
CONTACT: Jeffrey A. Best, ASLA
PROJECT NUMBER:

12856

SHEET TITLE:
SIGNING AND MARKING PLAN

SHEET NUMBER:

C41



① Note:
Crosswalk bars shall be centered on lane lines and at center of each lane.

LEGEND
□ Remove Sign

See Sh. No. C42 for Additional Marking Details.

PEC PROFESSIONAL ENGINEERING CONSULTANTS, P.A.
303 SOUTH TOPEKA WICHITA, KS 67202
316-262-2691 www.pec1.com

Saved: 12-19-2013 3:16:01 PM by CP
 Plot: Scale: 1:1 12-19-2013 3:16:29 PM by CP