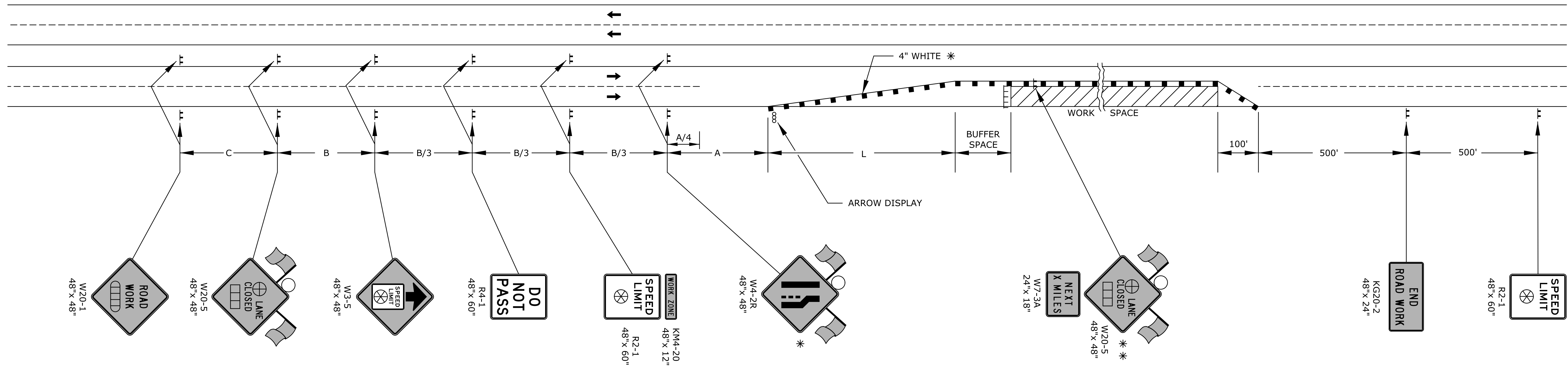


STATE	PROJECT NO.	YEAR	SHEET NO.	TOTAL SHEETS
KANSAS	472-85080	2013	C49	

REFER TO STD. TE710 FOR ADDITIONAL INFORMATION ON TEMPORARY TRAFFIC CONTROL SIGNS AND SIGN SPACING. REFER TO STD. TE704 FOR TYPE III BARRICADES. REFER TO STD. TE702 FOR INFORMATION ON TAPERS AND CHANNELIZING DEVICES. REFER TO STD. TE700 FOR LENGTH OF BUFFER SPACE.



LEFT-SIDE SIGNS SHALL BE OMITTED FOR A FOUR-LANE UNDIVIDED HIGHWAY.

* FOR LEFT LANE CLOSURES USE W4-2L AND YELLOW EDGE LINE ALONG CHANNELIZING DEVICES.

* * THE W20-5 (⊕ LANE CLOSED) AND W7-3A (NEXT X MILES) SIGNS SHOULD BE PLACED AT 2 MILE INCREMENTS ON A PROJECT OF 4 MILES OR LONGER.

- ▬▬ TYPE III BARRICADES
- X LENGTH TO THE NEAREST WHOLE MILE
- CHANNELIZING DEVICE
- ▬▬▬ AHEAD, 1500 FT, OR 1 MILE
- ▬▬▬ AHEAD, 1000 FT, 1500 FT, OR ½ MILE
- ⊕ RIGHT OR LEFT
- ⊗ SPEED TO BE DETERMINED BY THE ENGINEER
- TYPE "A" LOW INTENSITY WARNING LIGHT

3	8/8/07	Sign Spacing Change	M.B.	A.A.A.
2	12/29/05	M4-20 Changed to KM4-20	M.B.	A.A.A.
1	2/1/05	Clarified Notes, Updated Warning Signs	B.H.	A.A.A.
NO.	DATE	REVISIONS	BY	APP'D

KANSAS DEPARTMENT OF TRANSPORTATION
TYPICAL TRAFFIC CONTROL
FOUR-LANE HIGHWAY
ONE LANE CLOSED

TE744 9/1/00

FHWA APPROVAL	8/8/2007	APP'D	Anthony A. Alrobalre
DESIGNED	B.A.H.	DETAILED	B.A.H.
DESIGN CK.	DETAIL CK.	QUAN. CK.	TRACE CK.