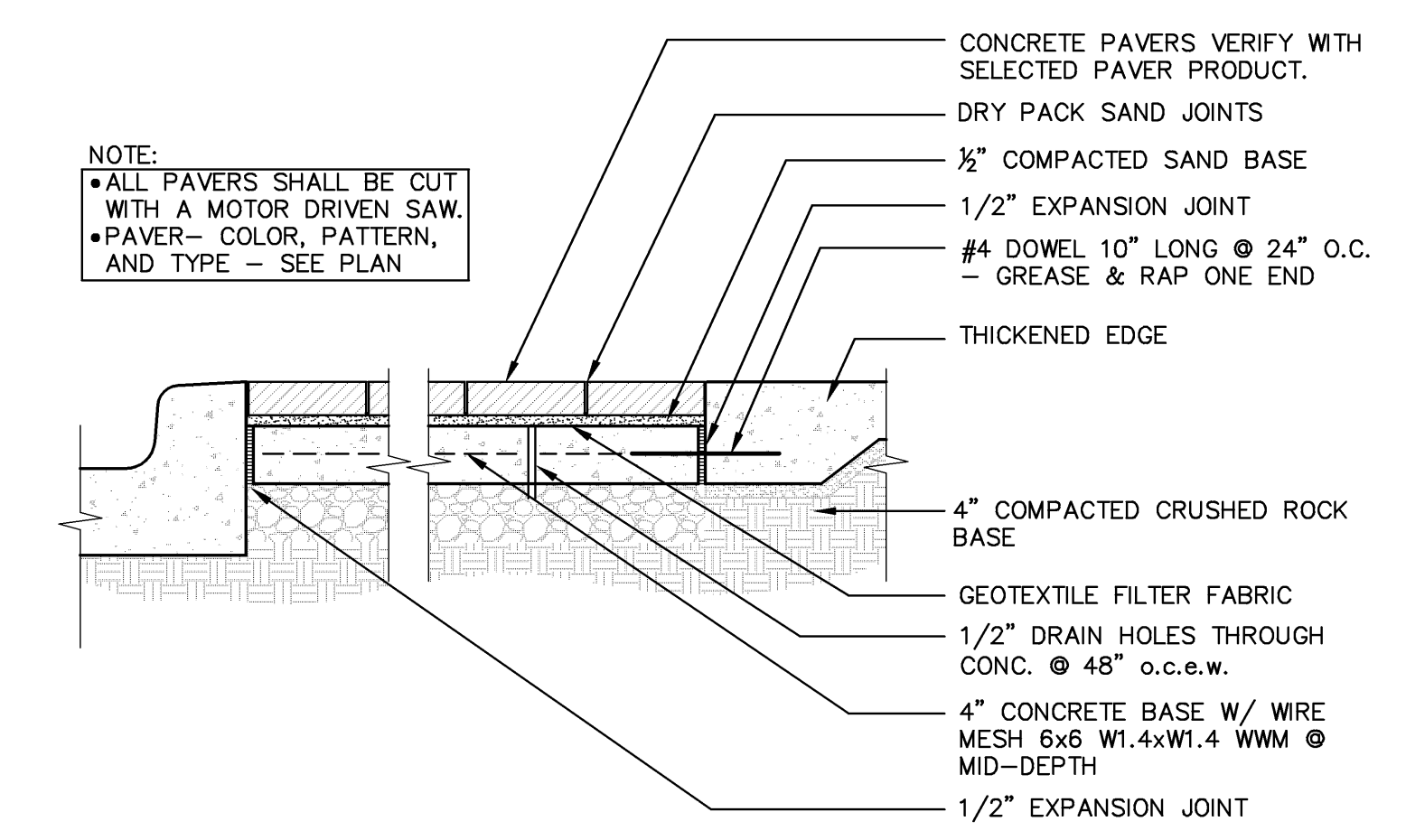
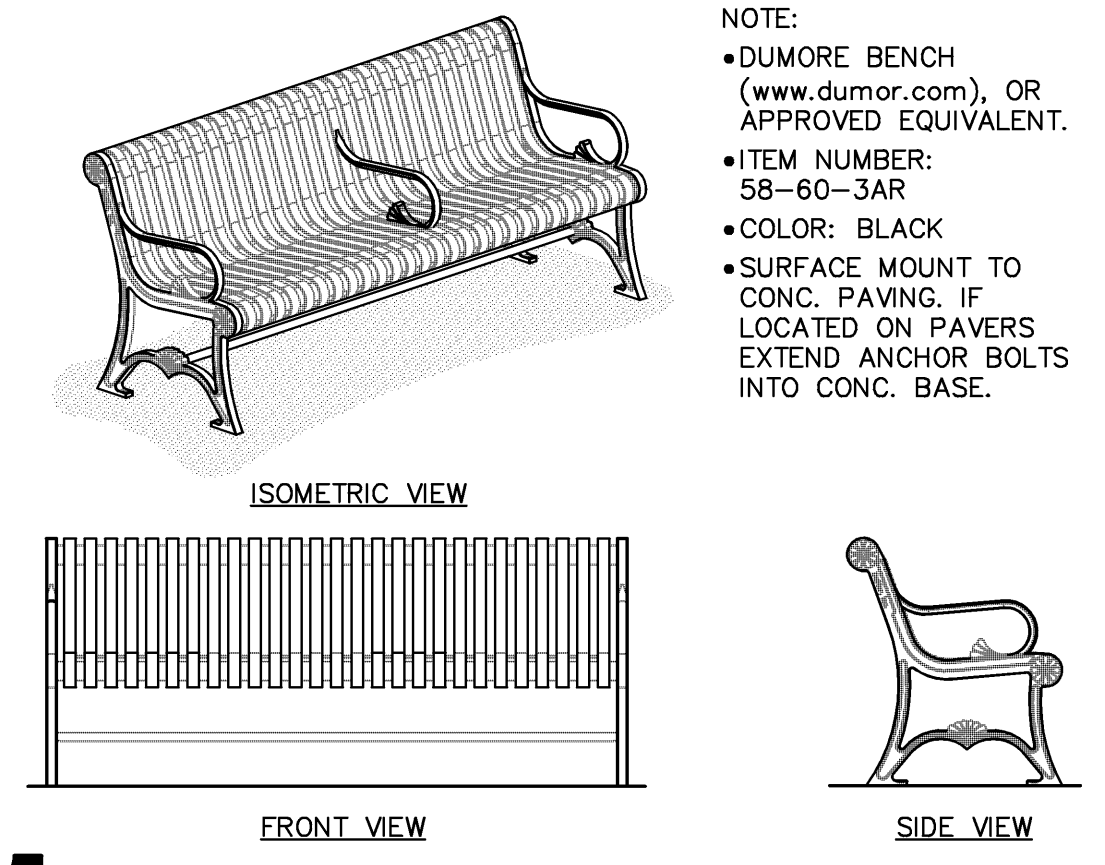
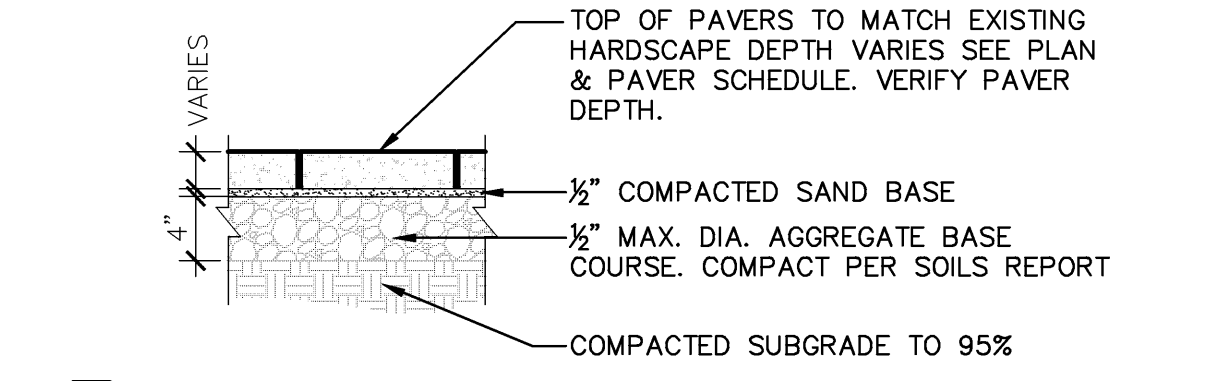


# 1 CONCRETE SIDEWALKS

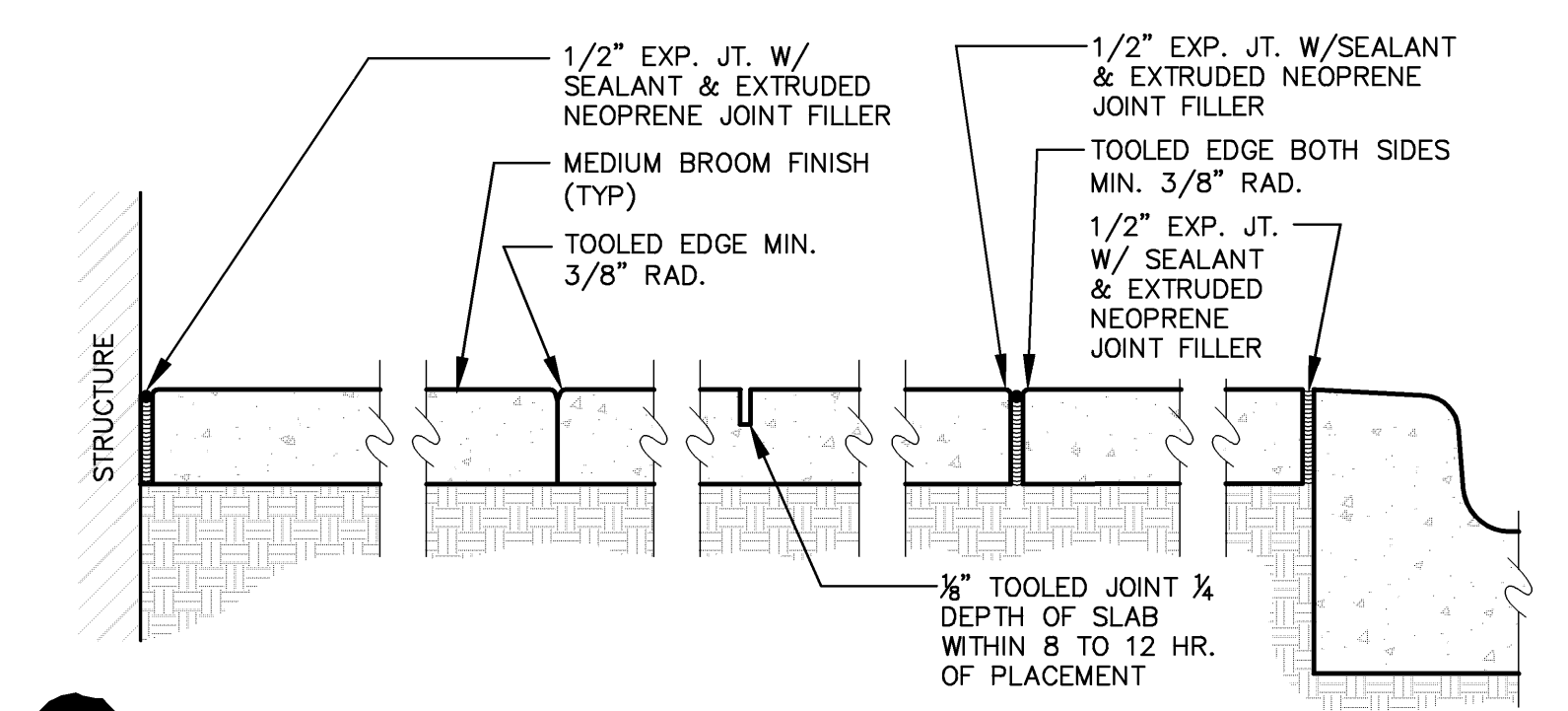


# 4 CONCRETE PAVER DETAIL

# 8 CONCRETE PAVERS DETAIL

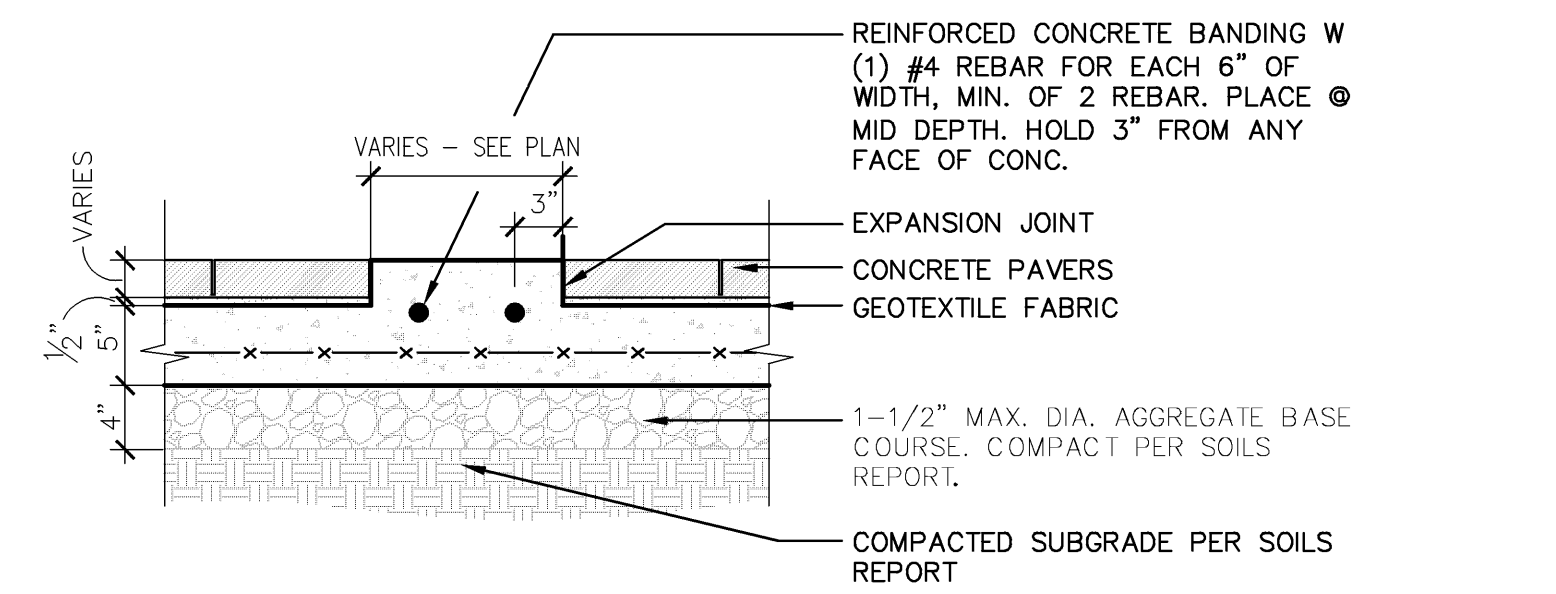


# 11 BENCH - BACKED

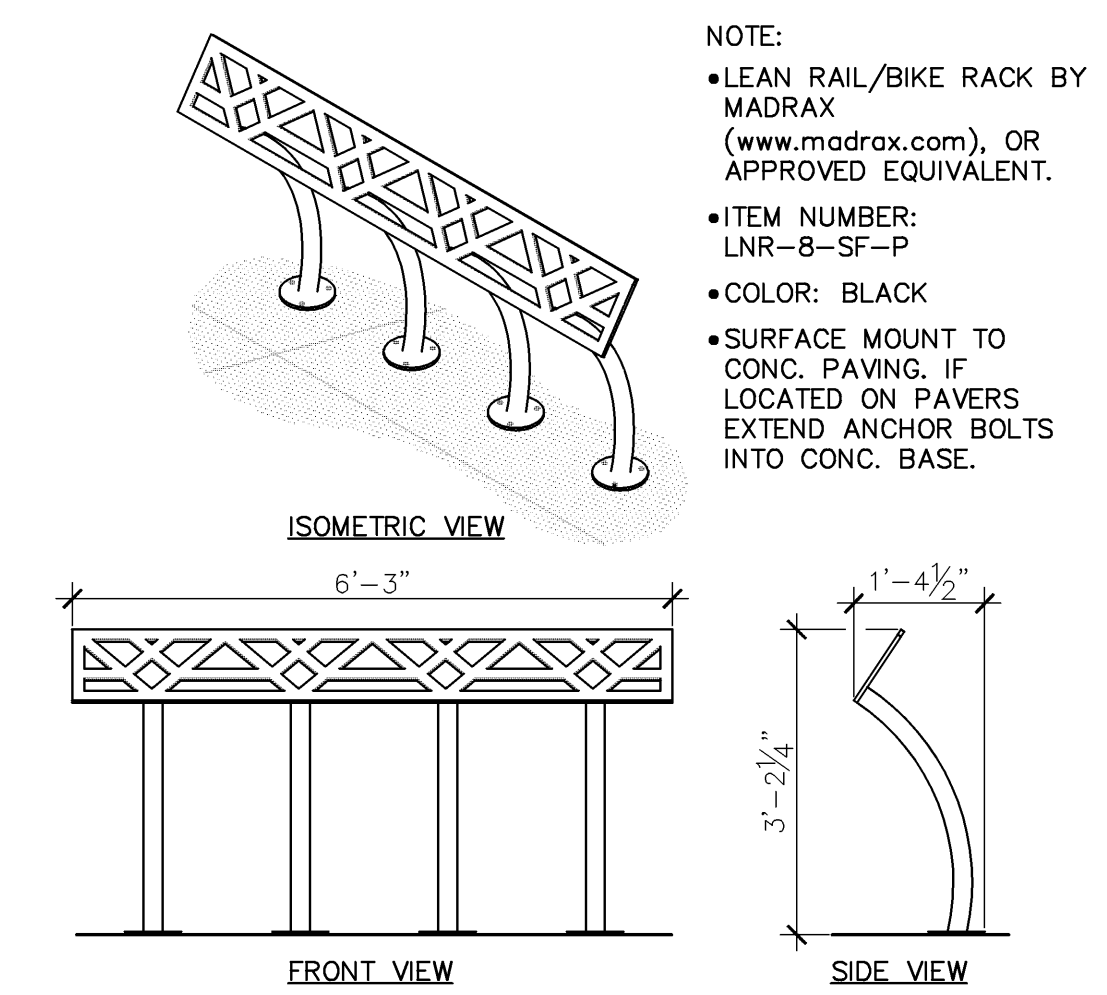


# 2 SIDEWALK JOINTING

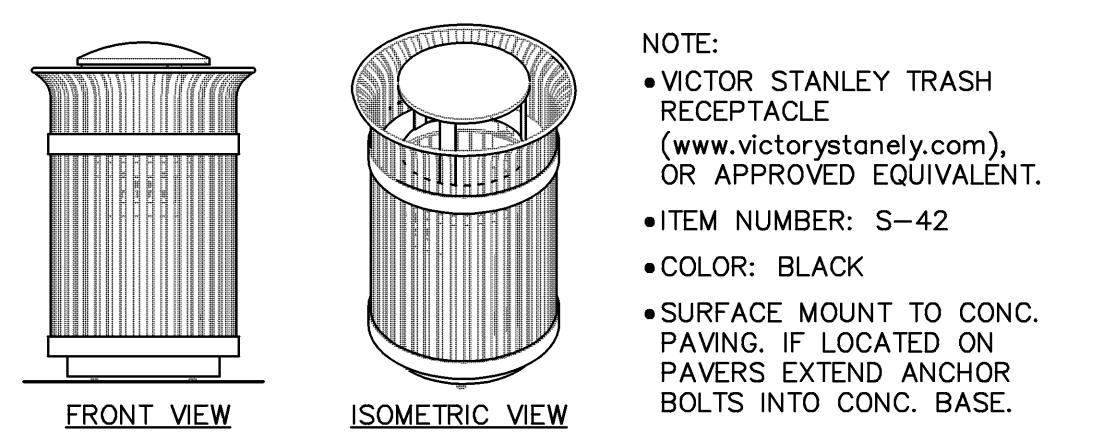
- 1/2" EXPANSION JOINT FOR CONCRETE WALK SHALL BE "SONOLASTIC EXPANSION JOINT FILLER" (GRAY); SONNEBORN, CHEMEX INC. OR APPROVED EQUIVALENT
- SEALANT SHALL BE MULTI-PART POURABLE URETHANE SEALANT: "POURTHANE"; W.R. MEADOWS, INC. OR APPROVED EQUIVALENT.
- ALL LABOR AND MATERIALS FOR EXPANSION AND CONTRACTION JOINTS SHALL BE SUBSIDIARY TO CONCRETE SIDEWALK.



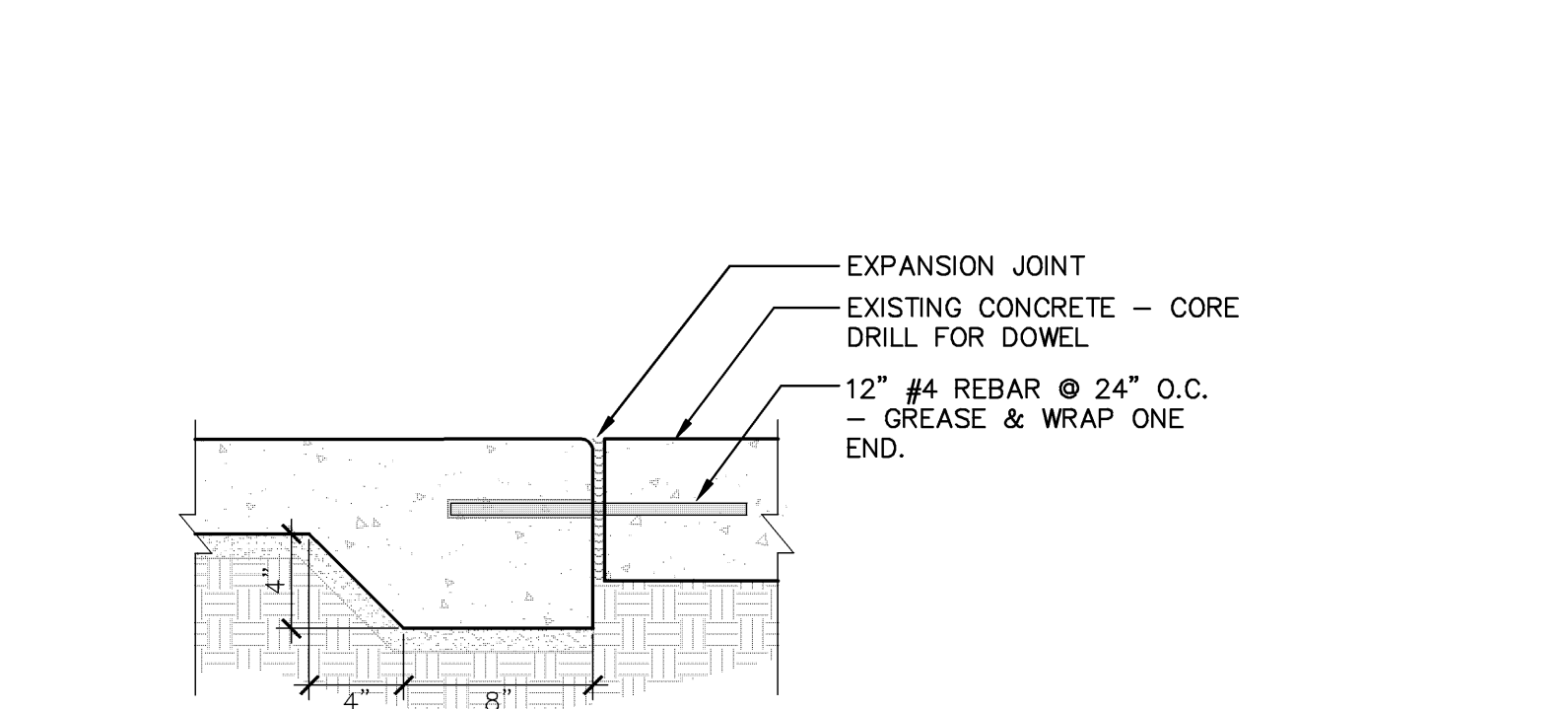
# 5 CONCRETE BAND IN PAVER FIELD



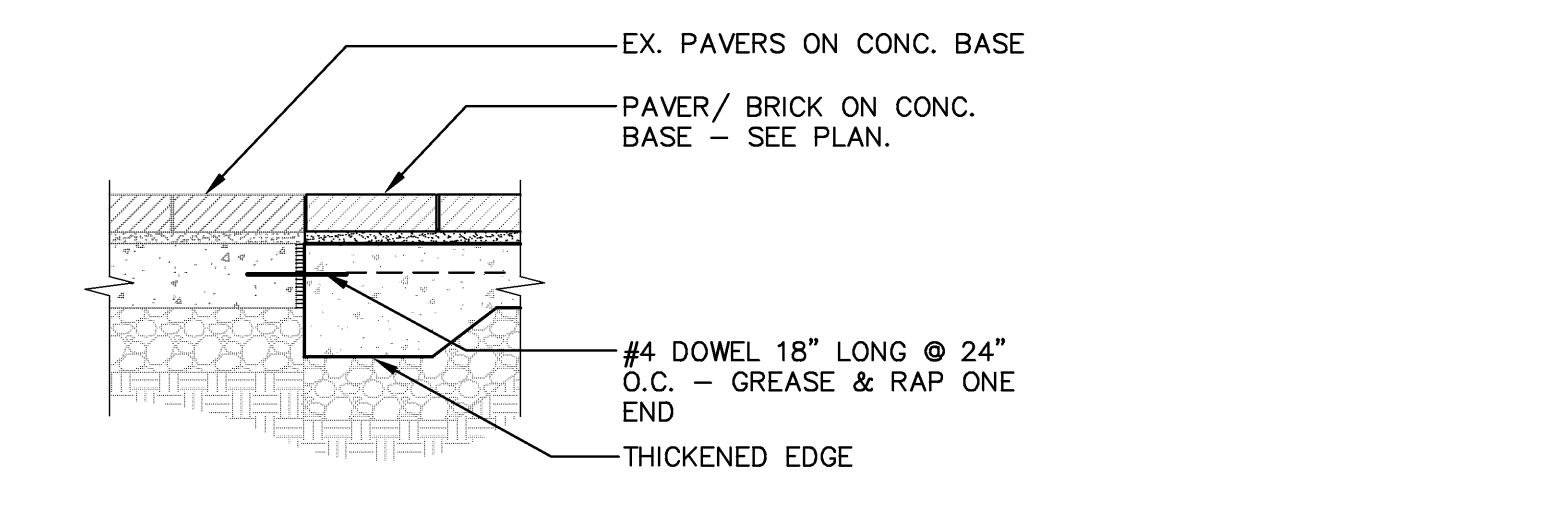
# 9 BIKE RACK A



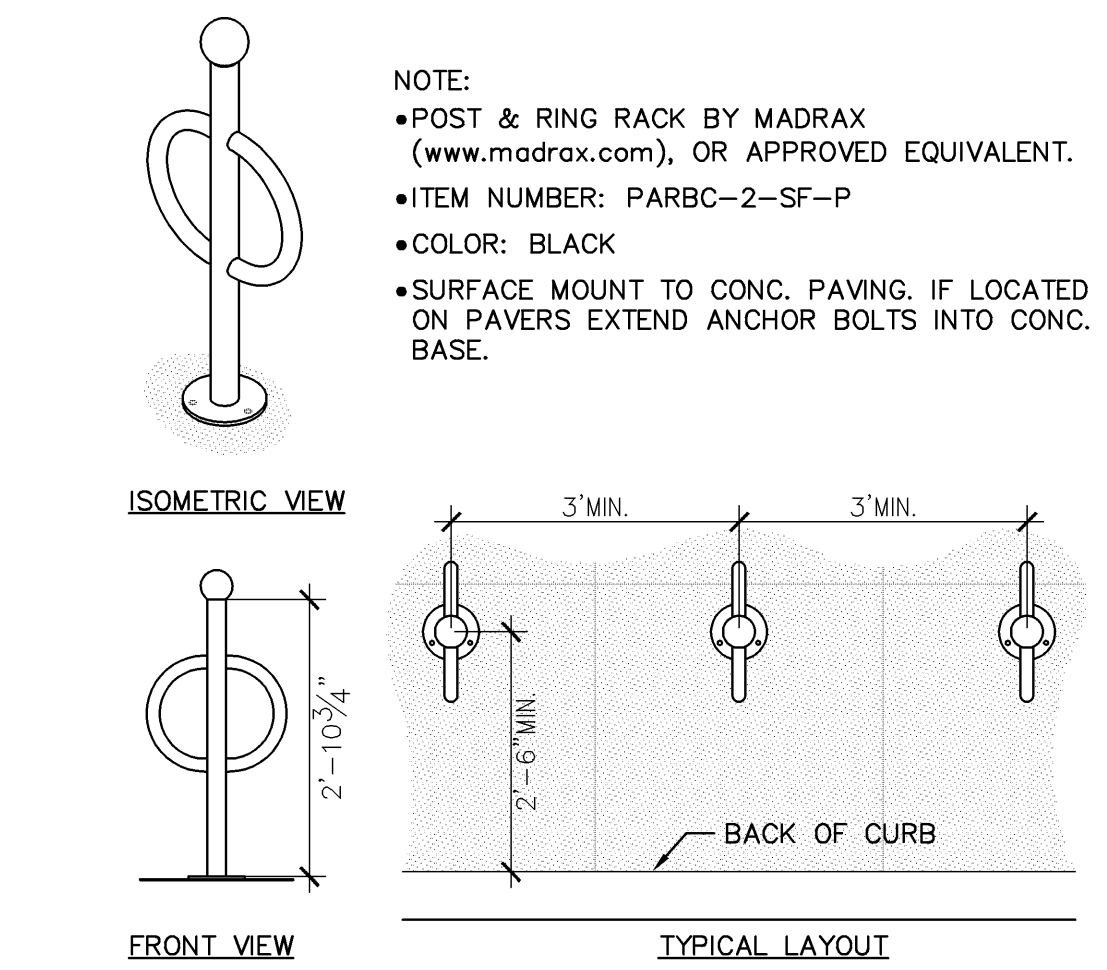
# 12 TRASH RECEPTACLE



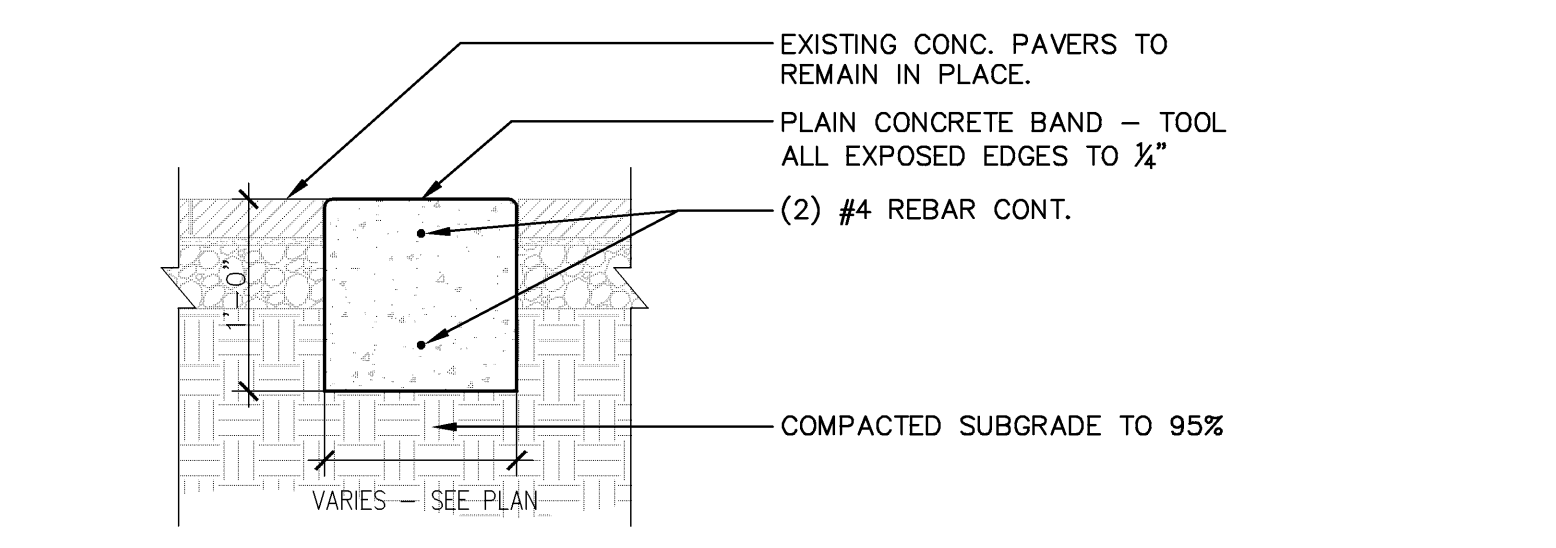
# 3 SIDEWALK THICKENED EDGE



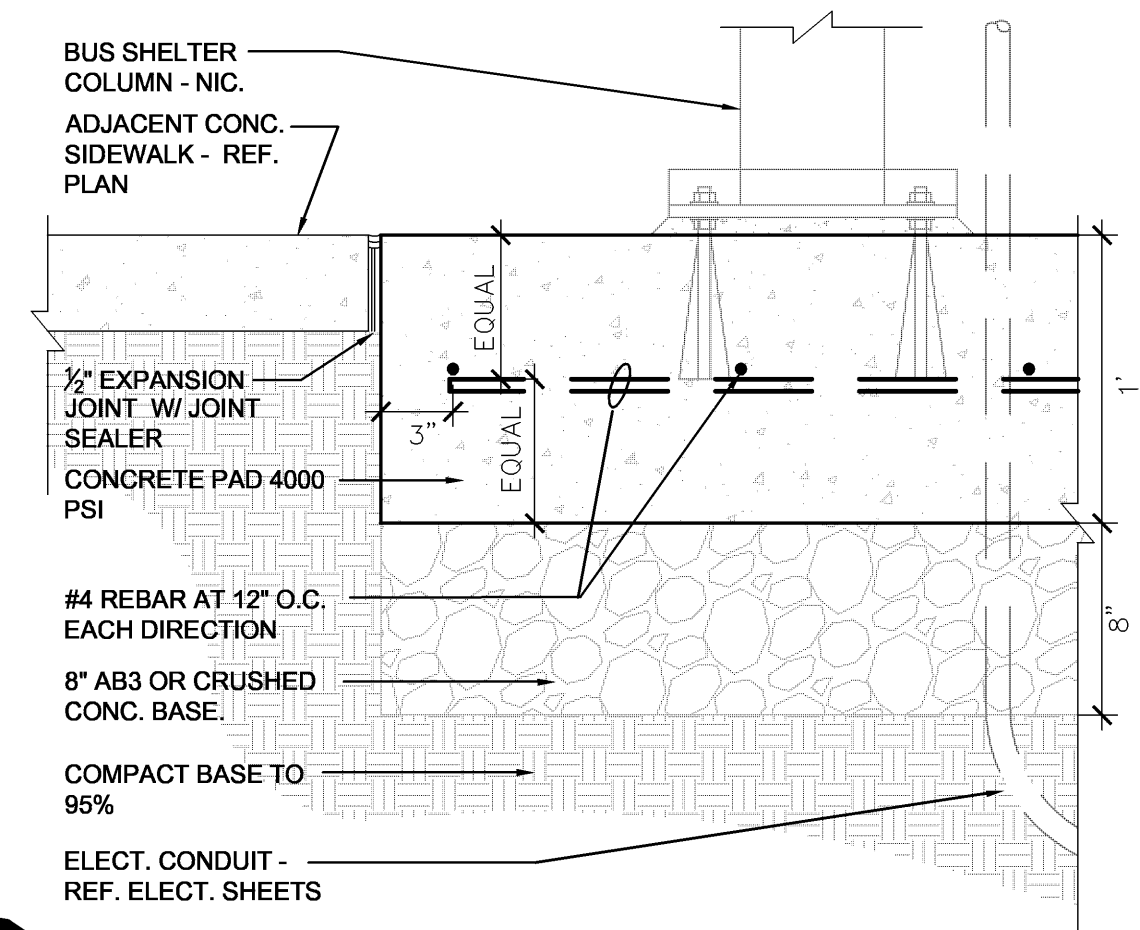
# 6 PAVER INTERFACE



# 10 BIKE RACK B



# 7 REINFORCED CONCRETE BAND



# 13 CONCRETE PAD - BUS SHELTER

DOUGLAS AVE. BUS FACILITY IMPROVEMENTS WICHITA, KS

LawKingdon Architecture  
Engineering · Planning · Interiors · Landscapes

